

Planning/Programme

- Hull 801: The date for launch has been rescheduled. The shipyard could not achieve the earlier given date of the 24th August 2017, subsequent date advised by FMEL, 21st September 2017, was then changed, latest date advised by FMEL is 21st November 2017. This would indicate on paper that come the date of launch the programme will be 3 months behind schedule; the production drawings, outfitting, electrical installation, machinery, piping installation etc are many months behind schedule, the planning and the execution of the installation work is poorly organised and the co-ordination of the activities after the launch will be a major challenge. The Shipyard's focus is on the fabrication and erection of units on Hull 801 and the required works to be carried out before launch.
- Hull 801, as of 16th October 2017 – 97% fabrication achieved. Original date for 100% fabrication 16th January 2017. Currently 9 months (and 3% in terms of fabrication) behind schedule.
- Hull 802, as of 16th October 2017 - 60% fabricated achieved. Fabrication at a standstill. Less than 5% achieved in the last 7 months. Original date for 75% fabrication 16th December 2016. Currently 10 months (and 15% in terms of fabrication) behind schedule.
- Seven months ago, on the 24th March 2017, FMEL advised that the new plans for Hull 802 were to construct and outfit the accommodation block at Inchgreen (starting in May 2017) and Hull 802 would be towed to Inchgreen after Launch (17th November 2017), where the accommodation block would be lifted on and the vessel completed at Inchgreen. These plans did not come to fruition, work on Hull 802 has been at a standstill for the last 6 months, with no signs of work re-commencing. FMEL have not provided new plans for Hull 802.
- FMEL have yet to advise the expected delivery dates for Hulls 801 and 802. For these types of Ships, in an experienced shipyard it would take between 8 to 12 months from the date of launch to the date of vessel delivery. Given the current levels of output at FMEL, it is highly likely timescales as such may be exceeded.

Crew Attendance at Shipyard

CMAL have received from CFL proposed crew costing for pre-delivery activities associated with the build and operational readiness of 801 and 802.

LNG tank for 802

The LNG Tank for 802 was unloaded at Antwerp and during the unloading a dent (800mm dia x 50mm deep) was discovered. The tank is being transported back to the place of manufacture in China, where the damage will be examined.

Workforce

There have been recent lay offs at the yard:

Approximately two thirds of sub-contractor steelworkers has been let go.

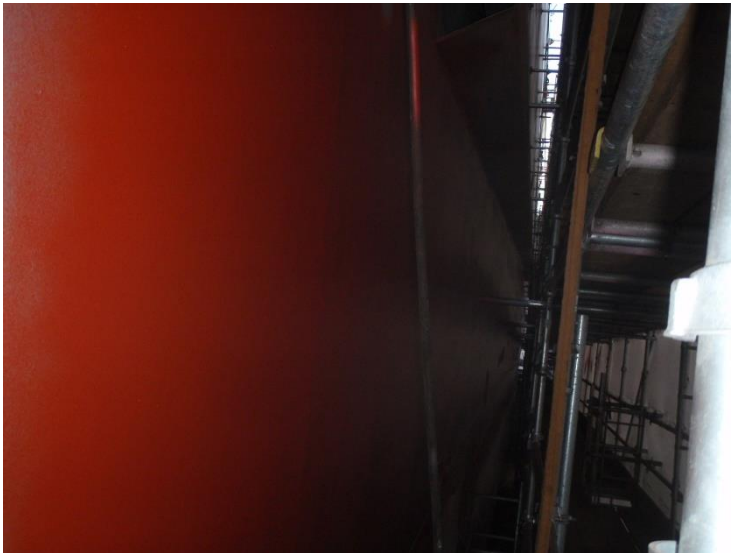
The Commissioning Manager and a Project Manager have been let go.

The yard lack many key personal management, technical and supervision personnel.

Agenda Item 8 – Project Updates

Dual Fuel Vessels 1 & 2 – Progress update

Photographs – 801



YARD NO. 801									
Milestone	Original Scheduled Date See Note 1	Revised Scheduled Date See Note 2	Revised Scheduled Date See Note 3	Revised Scheduled Date See Note 4	Revised Scheduled Date See Note 5	Revised Scheduled Date See Note 6		Actual Date	Comments
Cutting of Steel	15 Dec 2015	15 Dec 2015	-					15 Dec 2015	Achieved on original scheduled date Rev 01
10% Fabrication	18 Apr 2016	13 Jun 2016	-					10 Jun 2016	Achieved 2 months later than original schedule Rev 01 Achieved in line with revised schedule Rev 03
25% Fabrication	14 Jun 2016	26 Jul 2016	-					04 Aug 2016	Achieved 2 months later than original schedule Rev 01 Achieved in line with revised schedule date rev 03
35% Fabrication	15 Aug 2016	12 Sep 2016	-					06 Oct 2016	Achieved 8 weeks later than original schedule Rev 01 Achieved 4 weeks later than revised schedule Rev 03
50% Fabrication	14 Oct 2016	14 Oct 2016						09 Dec 2016	Achieved 2 months later than original and revised schedules
Major Equipment and Lock Out Items Installations	14 Nov 2016	13 Mar 2017 to 18 Jan 2018	-	14 th June 2017	16 th July 2017			16 th July 2017	Not all major equipment has been delivered/installed: Electrical Switchboards, Propellers/Shaft lines/, RoRo Equipment still to be installed.
75% Fabrication	15 Dec 2016	15 Dec 2016	10 Feb 2017					31 st March 2017	Achieved 3 and a half months later than originally scheduled.
100% Fabrication	16 Jan 2017	16 Jan 2017	16 June 2017	10 th July 2017	15 th Sep 2017				97% Fabricated. Original date for 100% fabrication was: 16 January 2017. Currently 9 months (and 3% in terms of fabrication) behind schedule.
Berth Join Up	14 Mar 2017	28 Apr 2017	14 Jul 2017	15 th Aug 2017	06 th Oct 2017				
Hull Inspection Prior to Paint	17 Apr 2017	26 May 2017	21 Apr 2017	24 th July 2017	tba			18 th Aug 2017	Partial area inspected only.
Launch	14 Aug 2017	24 Aug 2017	24 Aug 2017	24 Aug 2017	21 st Sep 2017	21 st Nov 2017			The status of the drawings, outfitting and installation several months behind schedule.
Delivery	25 May 2018	29 Jun 2018	25 May 2018	25 May 2018	25 th May 2018				The Contract allows for a delivery date of 22nd September and can be extended for specific events.

Note 1: From Cardinal Programme Rev 01 dated 14 Dec 2015

Note 2: From Cardinal Programme Rev 03 dated 16 May 2016

Note 3: Email from FMEL 09 Dec 2016

Note 4: 12th May 2017

Note 5: Emails Week 28/2017

Note 6: Email 04 Sep 2017

YARD NO. 802									
Milestone	Original Scheduled Date See Note 1	Revised Scheduled Date See Note 2	Revised Scheduled Date See Note 3	Revised Scheduled Date See Note 4				Actual Date	Comments
Cutting of Steel	15 Dec 2015	15 Dec 2015	-					15 Dec 2015	Achieved on original scheduled date Rev 01
10% Fabrication	18 Apr 2016	13 Jun 2016	-					10 Jun 2016	Achieved 2 months later than original schedule Rev 01 Achieved in line with revised schedule Rev 03
25% Fabrication	14 Jun 2016	02 Aug 2016	-					04 Aug 2016	Achieved 2 months later than original schedule Rev 01 Achieved in line with revised schedule date rev 03
35% Fabrication	15 Aug 2016	26 Sep 2016	-					06 Oct 2016	Achieved 8 weeks later than original schedule Rev 01 Achieved 2 weeks later than revised schedule Rev 03
50% Fabrication	14 Oct 2016	18 Nov 2016	20 Jan 2017					13 Jan 2017	Achieved 3 months later than original schedule Rev 01
Major Equipment and Lock Out Items Installations	14 Nov 2016		TBA	16 Oct 2017					"Installation" of all the "Major Equipment" has not been commenced on the 14th November 2016 as per original plan.
75% Fabrication	15 Dec 2016	19 Jan 2017	05 May 2017	22 Sep 2017					60% Fabricated. Fabrication at a standstill. Less than 5% achieved in the last 7 months. Original date for 75% fabrication was: 16 December 2016. Currently 10 months (and 15% in terms of fabrication) behind schedule.
100% Fabrication	16 Jan 2017	20 Feb 2017	20 Oct 2017	13 Oct 2017					FMEL to advise new date.
Berth Join Up	14 Mar 2017	05 Jan 2018	14 Dec 2017	10 Nov 2017					FMEL to advise new date.
Hull Inspection Prior to Paint	17 Apr 2017	02 Feb 2018	24 Nov 2017	31 Oct 2017					FMEL to advise new date.
Launch	12 Oct 2017	20 Mar 2018	12 Jan 2018	17 Nov 2017					FMEL to advise new date.
Delivery	26 Jul 2018	29 Aug 2018	26 Jul 2018	26 Jul 2018					The Contract allows for a delivery date of 23rd November 2018 and can be extended for specific events.

Note 1: From Cardinal Programme Rev 01 dated 14 Dec 2015

Note 2: From Cardinal Programme Rev 03 dated 16 May 2016

Note 3: Email from FMEL 09 Dec 2016

Note 4: 12 May 2017