

**Accredited Official Statistics**



# **Scottish Prison Population Statistics 2023-24**

**December 2024**

## Contents

|  |           |
|--|-----------|
| Figures and Tables .....   | 3         |
| <b>Key Findings .....</b>  | <b>6</b>  |
| Prison Populations .....   | 6         |
| Prison Flows .....   | 8         |
| Statutory Throughcare Orders .....                               | 9         |
| An Accredited Official Statistics Publication for Scotland ..... | 9         |
| <b>Average Daily Populations .....</b>                           | <b>10</b> |
| Legal status .....   | 11        |
| Index Offence Groups .....                                       | 14        |
| Index sentences .....  | 15        |
| Statutory Throughcare Orders (NEW) .....                         | 17        |
| Further population characteristics .....                         | 18        |
| <b>Women in Custody .....</b>                                    | <b>19</b> |
| Index offence groups .....                                       | 20        |
| Index sentences .....  | 21        |
| <b>Young People in Custody .....</b>                             | <b>23</b> |
| Index offence groups .....                                       | 24        |
| Index sentences .....  | 25        |
| <b>Sentenced Index Offences .....</b>                            | <b>27</b> |
| Group 1 – Non-sexual crimes of violence .....                    | 27        |
| Group 2 – Sexual offences .....                                  | 27        |
| Group 3 – Crimes of dishonesty .....                             | 28        |
| Group 4 – Damage and reckless behaviour .....                    | 28        |
| Group 5 – Crimes against society .....                           | 28        |
| Group 6 – Antisocial offences .....                              | 29        |
| Group 7 – Miscellaneous offences .....                           | 29        |
| Group 8 – Road traffic offences .....                            | 29        |
| <b>Remand Index (alleged) Offences .....</b>                     | <b>30</b> |
| Remand index (alleged) offence groups .....                      | 30        |
| Index (alleged) offence categories .....                         | 31        |
| Group 1 – Non-sexual crimes of violence .....                    | 31        |
| Group 2 – Sexual offences .....                                  | 31        |
| Group 5 – Crimes against society .....                           | 32        |
| Other offence categories .....                                   | 32        |

|   |           |
|---|-----------|
| <b>Individuals Experiencing Imprisonment .....</b>                  | <b>33</b> |
| Gender .....  | 34        |
| Age .....   | 34        |
| Ethnicity .....   | 36        |
| Nationality (NEW) .....   | 36        |
| Other individual level characteristics .....                        | 38        |
| <b>Population In-Flows .....</b>                                    | <b>39</b> |
| Arrivals to prison .....  | 39        |
| Arrivals by legal status.....                                       | 39        |
| Arrivals by local authority.....                                    | 40        |
| Arrivals by deprivation .....                                       | 40        |
| Arrivals by no fixed abode .....                                    | 41        |
| Arrivals by offence group.....                                      | 41        |
| <b>Population Transitions and Out-Flows.....</b>                    | <b>43</b> |
| Departures and transitions .....                                    | 43        |
| Custodial journeys .....  | 44        |
| Time in custody.....  | 45        |
| Time on remand.....   | 46        |
| Liberations .....   | 47        |
| Leaving Remand.....   | 47        |
| Sentenced liberations .....   | 49        |
| Statutory Throughcare Departures (NEW) .....                        | 50        |
| <b>Source Comparison .....</b>                                      | <b>52</b> |
| Legal status discrepancies .....                                    | 53        |
| Index offences .....  | 54        |
| Sentence length ambiguity .....                                     | 54        |
| <b>Context and supplementary information .....</b>                  | <b>55</b> |
| Other sources of information on the Scottish prison population..... | 56        |
| International Comparisons.....                                      | 57        |
| <b>Data and Methodology .....</b>                                   | <b>59</b> |
| Technical Manual.....   | 59        |
| Supplementary Tables.....   | 60        |
| Interactive Analytical Tool.....                                    | 60        |
| <b>Tell us what you think .....</b>                                 | <b>61</b> |
| Enquiries.....  | 61        |
| Join our mailing list .....   | 61        |

Future publications ..... 61

**Figures and Tables**

**Key Findings ..... 6**

**Average Daily Populations ..... 10**

Figure 1: The prison population has fluctuated over time, rising and falling sharply between 2017-18 and 2020-21 before stabilising then rising again in 2023-24..... 10

Figure 2: The pandemic impacts and subsequent stability in the sentenced population are followed by a period of rapid rise between January and November 2023, and in quarter one of 2024 ..... 11

Figure 3: Population growth in 2023-24 was largely the result of a growing sentenced population. The remand population remained broadly stable overall between 2022-23 and 2023-24..... 12

Figure 4: The remand population has remained broadly stable at a higher level since autumn 2020 ..... 13

Figure 5: Following a large reduction in 2020 and subsequent stability at a lower level, the sentenced population grew substantially in 2023, and between February and March 2024 ..... 14

Figure 6: The largest sentenced population increases in 2023-24 are in offence groups 2, 1, 5 and 3..... 15

Figure 7: There were increases in all determinate sentenced groups in 2023-24, with the largest increases occurring in the groups serving short (<1 year) and long (4-10 year) determinate sentences..... 16

Figure 8: The average daily population with an extended sentence has steadily increased from 2018-19. The average daily population with an SRO fell during the pandemic and has remained at a lower level in 2023-24. .... 17

**Women in Custody ..... 19**

Figure 9: The average daily population of women in prison increased in 2023-24 for the first time in four years, driven by a rise in the sentenced population ..... 19

Figure 10: The average daily population of men in prison increased in 2023-24, driven by a rise in the sentenced population ..... 20

Figure 11: Increases between 2022-23 and 2023-24 in the number of women serving sentences for index non-sexual crimes of violence, crimes of dishonesty and crimes against society. .... 21

Figure 12: Increases in the population of women serving short index sentences, as well as smaller increases for sentences of between 4 and less than 10 years in 2023-24..... 22

**Young People in Custody ..... 23**

Figure 13: While the population of young people in custody has been in long-term decline, there was a small increase in 2023-24. The number of sentenced

|   |           |
|---|-----------|
| young people on an average day increased in 2023-24 while the number untried fell .....   | 24        |
| Figure 14: The overall growth in the sentenced population of young people in 2023-24 is driven by increases across multiple index offence groups .....  | 25        |
| Figure 15: The largest increases across the sentenced population of young people in 2023-24 has been in the shortest index sentence groups and the between 4 and less than 10 year group .....  | 26        |
| <b>Sentenced Index Offences</b> .....   | <b>27</b> |
| <b>Remand Index (alleged) Offences</b> .....  | <b>30</b> |
| Figure 16: While the average daily remand population remained high overall in 2023-24, the number with an alleged index offence in group 1 fell and the number with alleged index offences in groups 2 and 5 increased.....                                 | 30        |
| <b>Individuals Experiencing Imprisonment</b> .....  | <b>33</b> |
| Figure 17: The number of individuals experiencing custody has risen in 2023-24, but remains lower than the pre-pandemic levels .....  | 33        |
| Figure 18: Increases in the number of individuals overall, particularly among those spending time sentenced, are concentrated in age bands 30+ years .....  | 35        |
| Figure 19: The proportion of individuals spending any time in custody who were British nationals has fallen since 2017-18 .....   | 37        |
| Figure 20: Individuals from the European Economic Area make up the largest non-British national group spending any time in custody since 2010-11. ....  | 37        |
| <b>Population In-Flows</b> .....  | <b>39</b> |
| Figure 21: Arrivals to custody have increased in 2023-24 but remain below pre-pandemic levels .....   | 39        |
| Figure 22: Arrivals increased across all legal status categories in 2023-24, but particular rises observed in Convicted Awaiting Sentence (CAS) and Sentenced arrivals .....  | 40        |
| Figure 23: People arriving to prison who identify themselves of being of no fixed abode comprise a growing proportion of arrivals over the decade 2014-15 to 2023-24.....   | 41        |
| Figure 24: The share of arrivals to prison across the index offence groups remained stable in 2023-24 .....   | 42        |
| <b>Population Transitions and Out-Flows</b> .....   | <b>43</b> |
| Figure 25: Departures have increased in 2023-24 but remain lower than pre-pandemic levels .....   | 43        |
| Figure 26: The volume of departures by journey type in 2023-24 is lower than pre-pandemic levels, but there are increases in convicted awaiting sentence only journeys, convicted awaiting sentence to sentenced journeys and sentenced only journeys ..... | 44        |
| Figure 27: A small increase in the proportion of departures occurring after a short stay of up to 3 months in 2023-24 .....   | 46        |

|   |           |
|---|-----------|
| Figure 28: Time on remand for those who transition to serving a sentence, and the longest remand departure periods, fell in 2023-24 but remains considerably longer than a decade ago ..... | 47        |
| Figure 29: Transitions and in court liberations from remand increase in 2023-24, while liberations to bail decrease.....  | 48        |
| Figure 30: Both the median and 90 <sup>th</sup> percentile duration of remand before a Court liberation have fallen in 2023-24.....   | 49        |
| Figure 31: All liberation types increased as departures from sentenced increased in 2023-24.....  | 50        |
| Figure 32: Community Commencements of Extended and SRO sentences broadly align to individuals departing sentenced each year 2014-15 to 2023-24  | 51        |
| <b>Source Comparison .....</b>  | <b>52</b> |
| Figure 33: Comparison of sources for the overall prison population estimation show close alignment 2002-03 to 2023-24.....  | 52        |
| Figure 34: Comparison of sources of population estimates by legal status .....  | 53        |
| <b>Context and supplementary information .....</b>  | <b>55</b> |
| Figure 35: UK incarceration rates rose to January 2024 while the median rate in Council of Europe countries fell.....   | 58        |
| Figure 36: England & Wales and Scotland have a far higher incarceration rate than their neighbours .....  | 58        |
| <b>Data and Methodology .....</b>   | <b>59</b> |
| Table 1: Supplementary Tables.....  | 60        |
| <b>Tell us what you think .....</b>   | <b>61</b> |

# Key Findings

Due to the nature of the data construction in these official statistics, there are discrepancies in the reporting of legal status between this and Other sources of information on the Scottish prison population. These are discussed in detail in the section Legal status discrepancies and the accompanying technical manual<sup>i</sup>. Legal status refers to whether an individual is held in custody as part of the sentenced or remand population. The official statistics reported here are intended to give an overview of broad trends in the prison population. They are in line with other sources in their description of high level trends. Other sources of information on the Scottish prison population provide a 'live' view with greater detail on prison population composition.

## Prison Populations

The **average daily prison population** in Scotland was 7,860 in 2023-24. This is an increase of almost 6% from 2022-23, and is primarily driven by an increase in the sentenced population (+8%).

In the **average daily sentenced population** (6,017 in 2023-24), there were increases in the number serving sentences for index offences in Group 2: Sexual Offences (+12% to 1,392) and Group 3: Crimes of dishonesty (+17% to 344). The group serving sentences for index offences in Group 1 (Non-sexual crimes of violence) increased at a lower rate (+4% to 2,722 in 2023-24), but remained the largest group in the average daily sentenced population, accounting for 45% overall.

In line with previously reported trends, the proportion of the **average daily sentenced population** serving sentences for index offences in Groups 1 (Non-sexual crimes of violence) and 2 (Sexual crimes) continued to grow in 2023-24, reaching 68% (+1 percentage point from 2022-23).

In the **average daily sentenced population** there were increases in all determinate index sentence groups in 2023-24. The largest increases occurred in the groups serving index sentences of 1 year or less (+26% to 1,082) and index sentences of between 4 and less than 10 years (+8% to 1,622). The share of the sentenced population serving shorter index sentences remains below pre-pandemic levels. In 2019-20, 53% of the sentenced population had index sentences of 4 years or less. In 2023-24 this proportion had fallen to 44%.

The overall **average daily remand population** remained stable between 2022-23 and 2023-24, falling by just 0.5% to 1,796. The increase in the average daily sentenced population has meant that the proportion of the overall prison population held on remand on the average day has fallen in 2023-24 (to 23%).

The alleged index offence profile of the **average daily remand population** remained broadly similar to the previous reporting year in 2023-24. Those accused of Group 1 (Non-sexual crimes of violence) index offences comprised 52% of the average daily remand population in 2023-24, while those accused of Group 5

(Crimes against society) and Group 2 (Sexual crimes) index offences comprised 21% and 14% respectively. This compares to 54%, 21% and 13% in 2022-23.

The **average daily population of women** in prison increased by almost 13% in 2023-24 (from 282 in 2022-23 to 318). This is a greater rate of increase than the overall average daily prison population, although women still comprised just 4% of the prison population in 2023-24.

In line with the overall prison population, the increase in the **average daily population of women** in 2023-24 was driven by an increase in the sentenced population, which increased by 15% from 188 in 2022-23 to 217. The average daily convicted awaiting sentence population of women increased by 8 in 2023-24 to 29 and the average daily untried population of women remained at the same level as 2022-23 at 72. The proportion of women held on remand on the average day in 2023-24 was 32% (-1 percentage point from 2022-23).

For the first time since 2009-10 the **average daily population of young people (under 21 years)** rose slightly in 2023-24 (from 160 to 168). The increase in the average daily population of young people (under 21 years) in prison in 2023-24 occurred entirely among 18 to 20 year olds (+13 from 2022-23). The **average daily population of under-18s** in custody actually fell in 2023-24 from 9 in 2022-23 to 5.

The average daily sentenced population of **young people (under 21 years)** rose in 2023-24, from 76 in 2022-23 to 105 (37%). The average daily untried population of young people fell by around 31% in 2023-24 (from 64 in 2022-23 to 45), while the CAS population remained the same over the reporting period (17 in both 2022-23 and 2023-24). These shifts lowered the proportion of the average daily population of young people held on remand from 51% in 2022-23 to 36% in 2023-24.

The number of **individuals** who spent any time in prison increased by 6% in 2023-24 from 14,531 in 2022-23 to 15,348. Prior to the pandemic there was a long term downward trend in the numbers of individuals experiencing imprisonment, with a steep reduction in 2020-21. While the increase in 2023-24 is greater than in the intervening reporting years, the number of individuals experiencing imprisonment remains 11% below pre-pandemic levels (17,312 in 2019-20).

The average age of **individuals experiencing imprisonment** continued to rise in 2023-24, reaching 37.8 years. Since 2009-10 the proportion of people experiencing imprisonment aged 50+ has continued to increase, from 6.6% to 15.1% in 2023-24.

The nationality of **individuals experiencing imprisonment** has been added for this statistical release. British nationals comprise more than 90% of individuals experiencing imprisonment in Scotland in 2023-24. The proportion of individuals who are not British nationals has increased from 5% in 2017-18 to 9% in 2023-24. In 2023-24, individuals from the European Economic Area comprise the largest non-British national group experiencing imprisonment (607), a consistent pattern since 2010-11.

## Prison Flows

**Arrivals to prison** increased by around 11% in 2023-24 to 11,646. Prior to the pandemic there was a long term downward trend in the number of arrivals to prison. There was a steep decline in arrivals in 2020-21, followed by broad stability in the number of arrivals across 2021-23. While the number of arrivals to prison increased in 2023-24, the number of arrivals remains lower than pre-pandemic levels (14,341 in 2019-20).

The largest increases in arrivals in 2023-24 were in sentenced and convicted awaiting sentence **arrivals**, (+523 to 2,368 and +374 to 2,237 respectively). Untried arrivals increased by a smaller amount in 2023-24 (+210 to 6,944) but remained the largest category of arrivals, accounting for 60% overall in 2023-24. This is a lower proportion than in recent reporting years (64% in 2021-22 and 2022-23, 67% in 2020-21), but higher than the pre-pandemic period. Sentenced and convicted awaiting sentence arrivals accounted for 19% and 20% of total arrivals in 2023-24.

There was a 6.5% increase in **departures from prison** to 11,111 in 2023-24. Both arrivals to and departures from prison were below pre-pandemic levels in 2023-24, but the difference between the two (535) is at its highest level since 2018-19 (when it was 719) leading to a growth in the population.

Median **time on remand** before departure remained at around 21 days in 2023-24. The longest periods spent on remand had been increasing over time, with a sharp increase during 2020-21. In 2017-18, 90% of remand departures had occurred within 63 days, with the longest 10% of stays before departure taking 64 days or more. By 2022-23, the longest 10% of stays before departure from remand took 146 days or more. However, in 2023-24, 90% of remand departures occurred within 109 days, with the longest stays before departure taking 110 days or more. While this is a reduction on 2022-23, it remains substantially longer than pre-pandemic.

For those transitioning from the remand population to the sentenced population in 2023-24, the median **time on remand** reduced from 54 days in 2022-23 to 47 days. The longest 10% of stays before transitioning from remand to sentenced took 278 days or more, a reduction of 11 days from 2022-23. While this is a reduction between 2022-23 and 2023-24, the time to transition from the remand to the sentenced population remains substantially longer than in 2017-18, when the median days to transition was 31 and the longest 10% of stays before transition took 123 days or more.

The overall volume of **liberations** from remand increased by 6% in 2023-24, from 4,836 in 2022-23 to 5,125. The number of liberations from remand to the court or procurator fiscal continued to increase in 2023-24, up 9% from 3,683 in 2022-23 to 4,031. Transitions to the sentenced population increased by 5% to 4,090 over the same period but bail liberations fell by 7% to 933.

There was a 7% increase in **liberations** from the sentenced population in 2023-24, from 5,520 in 2022-23 to 5,891.

## Statutory Throughcare Orders

Information on sentenced periods in custody with extended sentences and Supervised Release Orders (SROs) have been added to the Scottish Prison Population Statistics data for this edition. These are types of sentence that require a period of supervision and compliance with other conditions in the community following a period in custody<sup>ii</sup>. More information about the data and sequencing of this information is available from our Technical Manual<sup>iii</sup>.

In the section Statutory Throughcare Orders we look at the prevalence of sentences with such conditions attached in the population.

Later in this report, in the section Statutory Throughcare Departures, we look at the number of departures into the community and compare it to operational Justice Social Work information compiled by the Scottish Government.<sup>iv</sup>

Other types of statutory throughcare (Parole, Non-Parole and Life Licences) may be partly derived from Sentenced liberations type and index sentences on departure.

## An Accredited Official Statistics Publication for Scotland

These statistics are [accredited official statistics](#). The Office for Statistics Regulation has independently reviewed and accredited these statistics as complying with the standards of trustworthiness, quality, and value in the [Code of Practice for Statistics](#).



Compliance with the code of practice for Official Statistics was assessed by the Office for Statistics Regulation in January 2023<sup>v</sup>. A number of required actions were highlighted by the regulator to ensure this source meet the standards for accreditation. These actions were confirmed completed in a letter to the Chief Statistician in April 2023<sup>vi</sup>. The Scottish Government continues to improve and refine this source to ensure its trustworthiness, quality and value.

Accredited official statistics are called National Statistics in the [Statistics and Registration Service Act 2007](#).

Scottish Government statistics are regulated by the Office for Statistics Regulation (OSR). OSR sets the standards of trustworthiness, quality and value in the [Code of Practice for Statistics](#) that all producers of official statistics should adhere to.

More information about Scottish Government statistics is available on the [Scottish Government website](#).

# Average Daily Populations

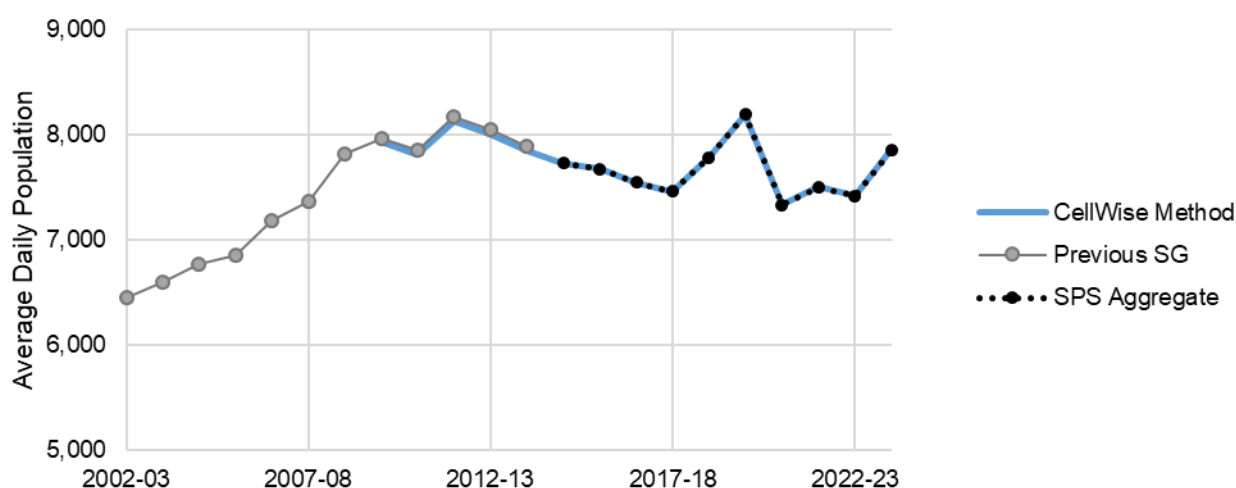
[[Supplementary Tables A1](#)]

The average daily prison **population**<sup>vii</sup> (ADP) in 2023-24 was 7,860. This is an increase of 5.8% from the previous year (7,428) and the highest level since 2019-20 (8,198).

Figure 1 shows the fluctuations in the average daily prison population over the last two decades, as well as the close correlation between different sources of information on the overall average daily prison population. Further comparisons between these different sources are provided in the Source Comparison section.

**Figure 1: The prison population has fluctuated over time, rising and falling sharply between 2017-18 and 2020-21 before stabilising then rising again in 2023-24**

Long-term trends in the average daily prison population, 2002-03 to 2023-24



The following commentary relates to the new source of data produced using the cellWise method.

The average daily prison population grew from 2002-03, peaking in 2011-12 when it reached 8,134 (Figure 1). It then fell year-on-year to 7,464 in 2017-18. In the years prior to the pandemic, the prison population grew rapidly to exceed the previous peak. In 2019-20 the average daily population was 8,198.

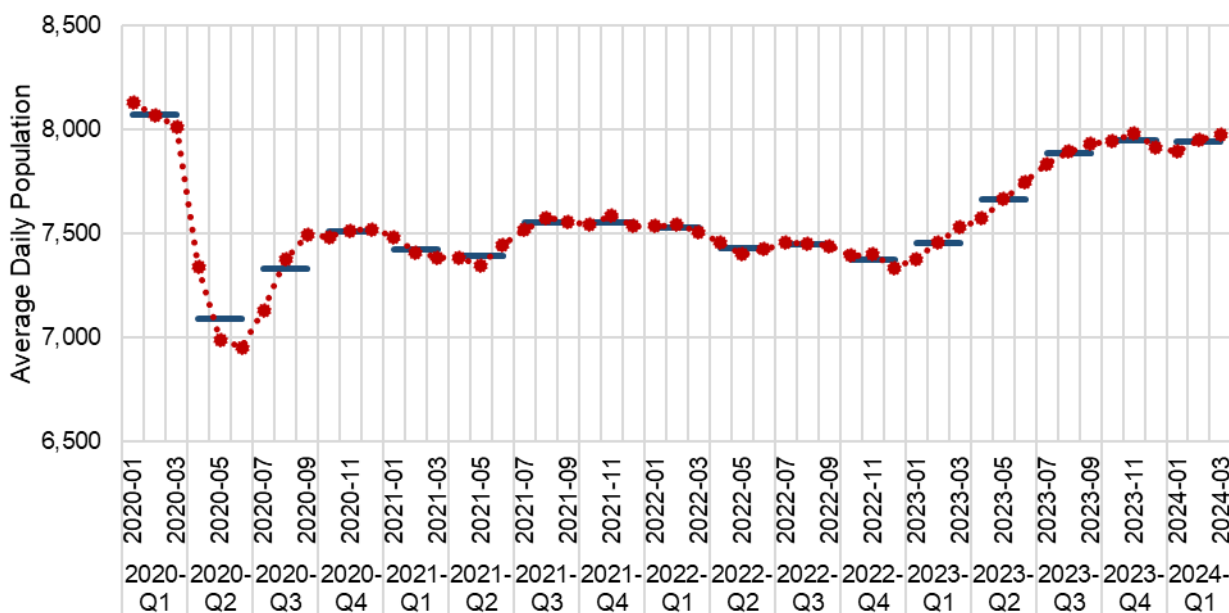
In 2020-21 there was a rapid decrease in the average daily prison population to 7,339. As discussed in previous editions of this publication<sup>viii</sup>, this was likely caused by the impact of the Covid pandemic and related public health measures on the justice system.

For the following two years, the average daily prison population remained at this lower level (7,507 in 2021-22 and 7,428 in 2022-23) before increasing to 7,860 in 2023-24.

Figure 2 shows the month-to-month changes in the prison population from January 2020 to March 2024. It shows the steady increase in the average daily population between January 2023 (7,380) and November 2023 (7,980). The average daily population fell in December 2023 but began to rise again in early 2024, reaching 7,977 in March 2024.

**Figure 2: The pandemic impacts and subsequent stability in the sentenced population are followed by a period of rapid rise between January and November 2023, and in quarter one of 2024**

Monthly and quarterly prison populations, January 2020 through March 2024



## Legal status

[[Supplementary Tables](#) M1 and X1]

There are known discrepancies between legal status populations determined using cellWise data and the live system data in other published sources. These discrepancies arise from an undercount of remand status individuals due to the classification hierarchy applied in the construction of the cellWise data. Information on legal status should be interpreted alongside ‘live’ sources of data. See the Legal status discrepancies section for details.

The overall (average daily) prison population increased by 5.8% between 2022-23 and 2023-24. Figure 3 breaks the average daily population down by legal status<sup>ix</sup> category, showing that growth was driven primarily by increases in the sentenced population. The average daily sentenced population increased by 432 (+7.7%) to 6,017 in 2023-24.

Over the same period, the untried population decreased by 38 to 1,480, while the convicted awaiting sentence (CAS) population increased by 29 to 316. Overall there was a very slight decrease in the remand population on the average day from

the previous year (-9 to 1,796, a fall of just -0.5%). This indicates broad stability in the overall remand population between 2022-23 and 2023-24. In 2023-24, the remand population comprised 23% of the overall average daily prison population.

**Figure 3: Population growth in 2023-24 was largely the result of a growing sentenced population. The remand population remained broadly stable overall between 2022-23 and 2023-24**

Average daily populations by legal status, 2009-10 to 2023-24

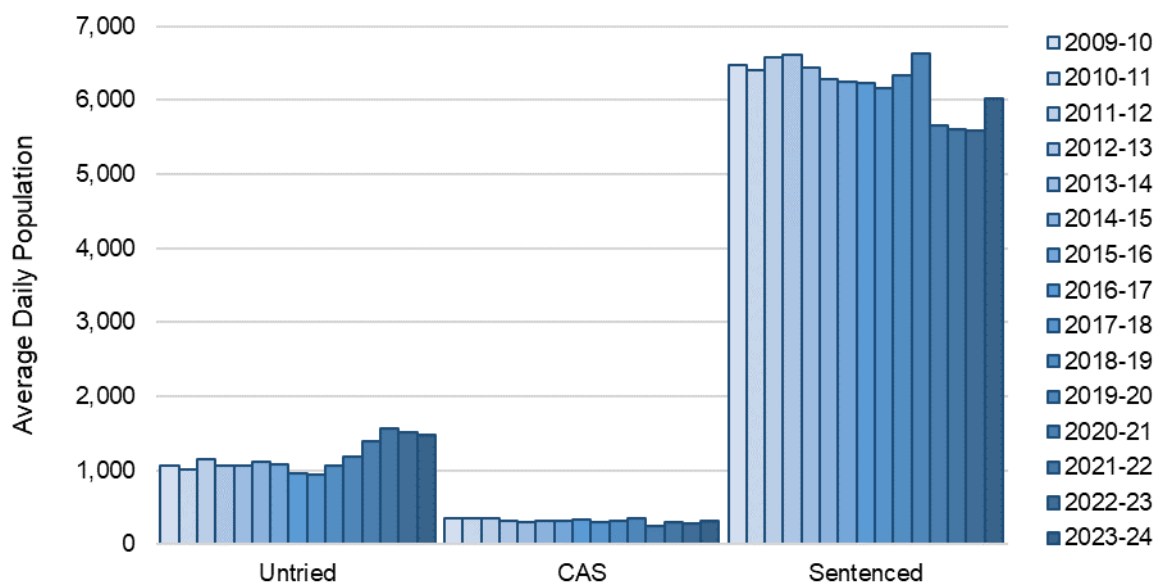
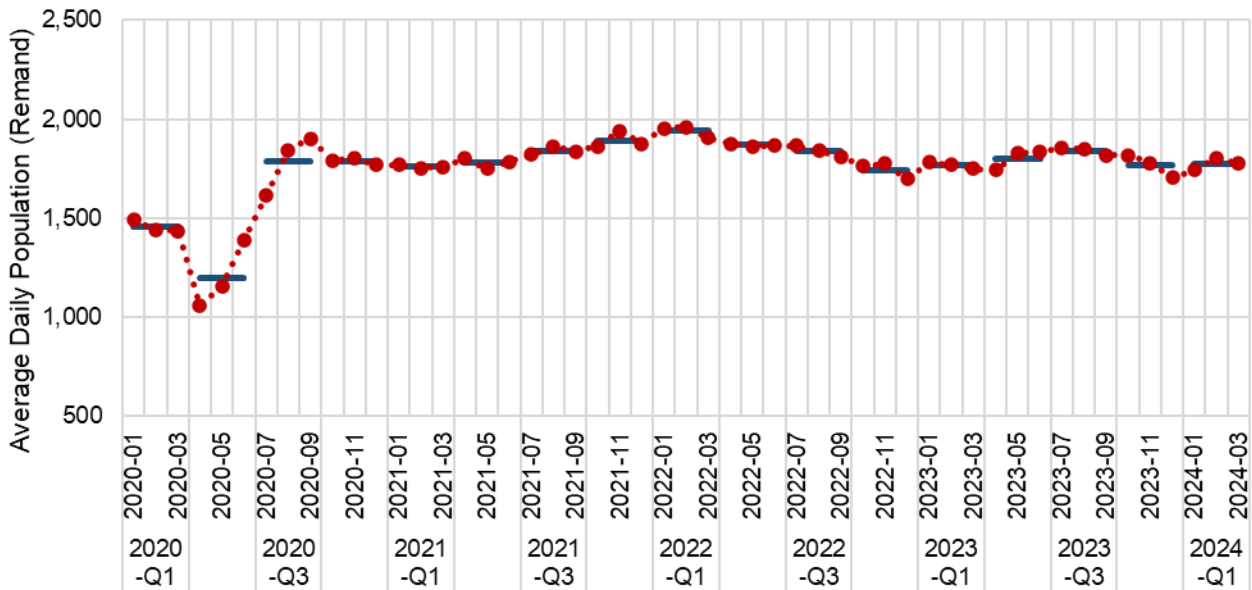


Figure 4 and Figure 5 provide the monthly and quarterly remand and sentenced populations since January 2020. After an initial sharp decrease, the remand population grew rapidly to September 2020, levelling off thereafter for the remainder of 2020-21 at a higher level than pre-pandemic. After falling during 2022, remand numbers increased in early 2023 before continuing to fall slowly until March 2023.

Over 2023-24, the number of people on remand on the average day remained relatively stable at this higher level. The remand population increased between April and July 2023 and fell slightly towards the end of the year, before increasing again in early 2024.

**Figure 4: The remand population has remained broadly stable at a higher level since autumn 2020**

Monthly and quarterly average remand prison populations, January 2020 through March 2024

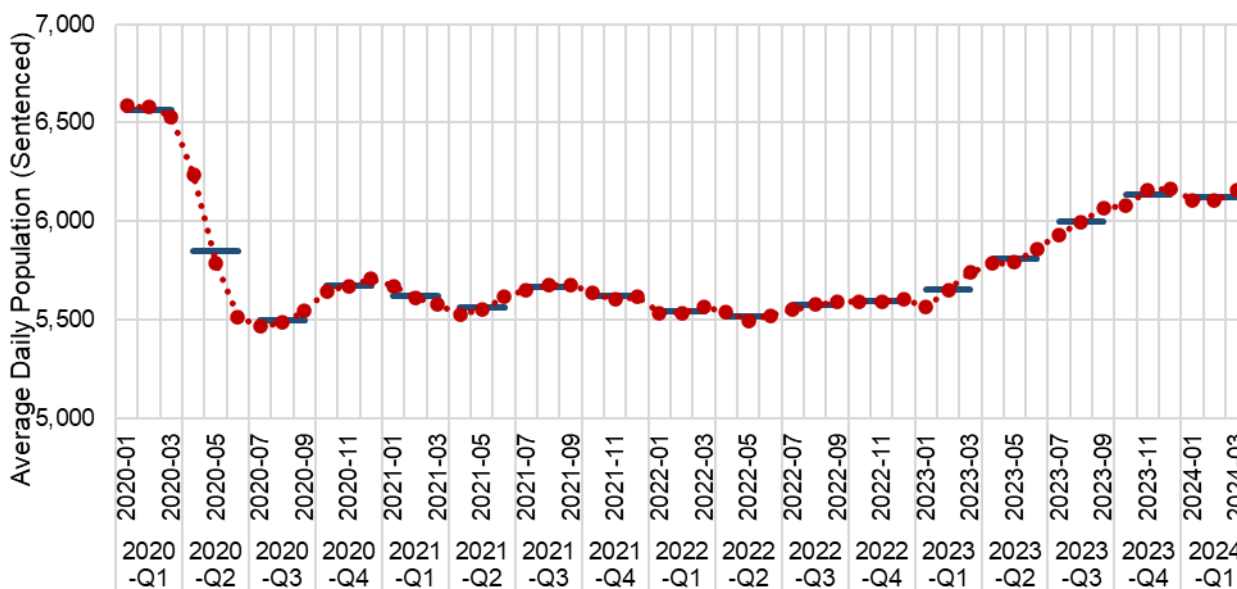


The sentenced population fell substantially and rapidly between April and July 2020 (Figure 5). It was then broadly stable (between 5,500 and 5,700) until early 2023 and considerably below pre-pandemic levels. However, there was a consistent increase in the sentenced population between January and November 2023, peaking at 6,168 in December 2023.

In March 2024 the average daily sentenced population was 6,157.

**Figure 5: Following a large reduction in 2020 and subsequent stability at a lower level, the sentenced population grew substantially in 2023, and between February and March 2024**

Monthly and quarterly average sentenced prison populations, January 2020 through March 2024



## Index Offence Groups

[\[Supplementary Tables M2\]](#)

This section examines the index offence groups of the (average daily) sentenced population. A more detailed discussion of the offence categories within these groups is provided in the section Sentenced Index Offences. The alleged offences of those held on remand are discussed in the section Remand Index (alleged) Offences.

The 7.7% increase in the sentenced population between 2022-23 and 2023-24 is not distributed evenly across offence groups. The largest volume change is in the population with index offences in **Group 2: Sexual Offences** which increased from 1,246 to 1,392 (+146, +12%).

The populations with index offences in **Group 2: Sexual offences** and **Group 7: Miscellaneous offences** in 2023-24 now exceed pre-pandemic levels (+31% from 1,065 in 2019-20 to 1,392, and +7% from 123 in 2019-20 to 131 respectively).

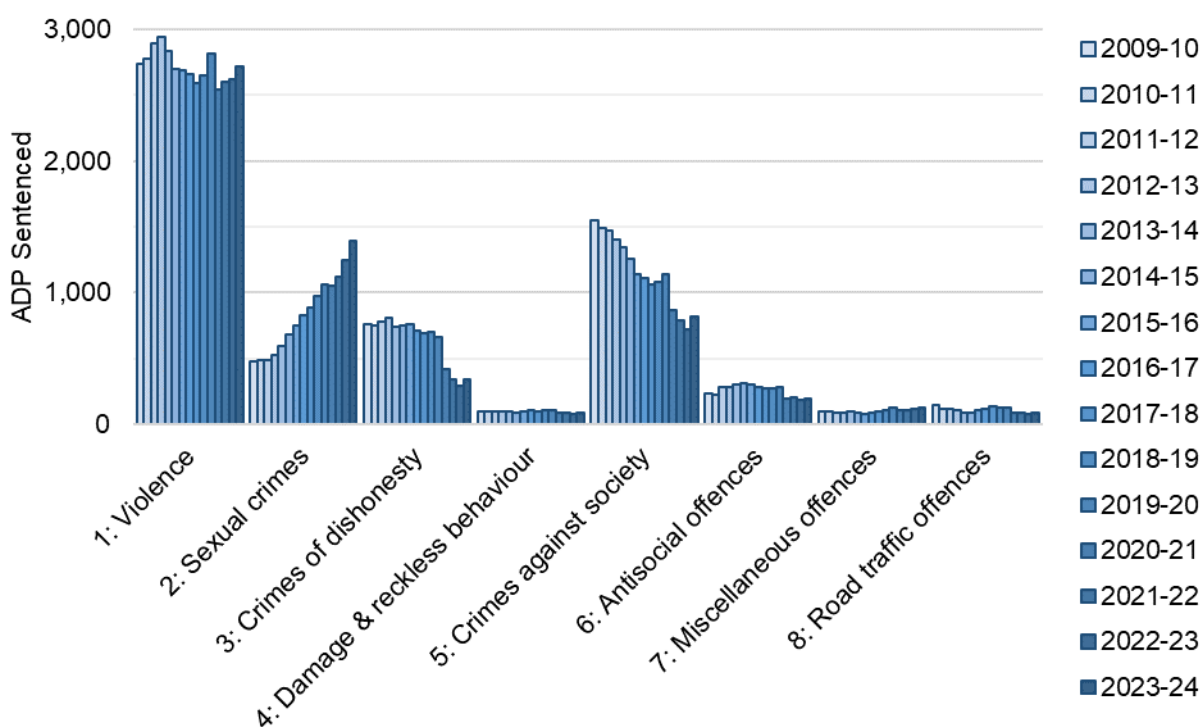
There was a 17% increase in the sentenced population with index offences in **Group 3: Dishonesty** in 2023-24 (+50 from 294 in 2022-23 to 344 ). The size of this population had fallen each year from 2018-19, and saw a large reduction in 2020-21. While the proportionate increase in 2023-24 was large, Group 3 remains considerably below pre-pandemic levels (344 compared with 664 in 2019-20).

The population with index **Group 1: Non-sexual crimes of violence** offences increased in 2023-24, although at a slightly lower rate than the sentenced population as a whole. It increased by 4%, from 2,617 in 2022-23, to 2,722 in 2023-24.

The population with index **Group 5: Crimes against society offences** increased by 13% from 723 in 2022-23 to 817 in 2023-24. There were small absolute increases in offence groups 4, 6 and 7 between 2022-23 and 2023-24.

**Figure 6: The largest sentenced population increases in 2023-24 are in offence groups 2, 1, 5 and 3.**

Average daily sentenced populations by index offence group, 2009-10 to 2023-24



The changes occurring within the index offence groups continues to change the overall offence profile of the prison population. There is a consistently large (average daily) population with index offences in Group 1 and a growing population with index offences in Group 2. Over the same period, there has been an overall decline in the average daily population with index offences in groups 3 and 5. This has led to a sentenced population increasingly comprised of those with index violent and sexual offences. Together, those with index offences in Groups 1 and 2 comprised 68% of the sentenced population in 2023-24 (+1 percentage point from 2022-23).

## Index sentences

[[Supplementary Tables M3](#)]

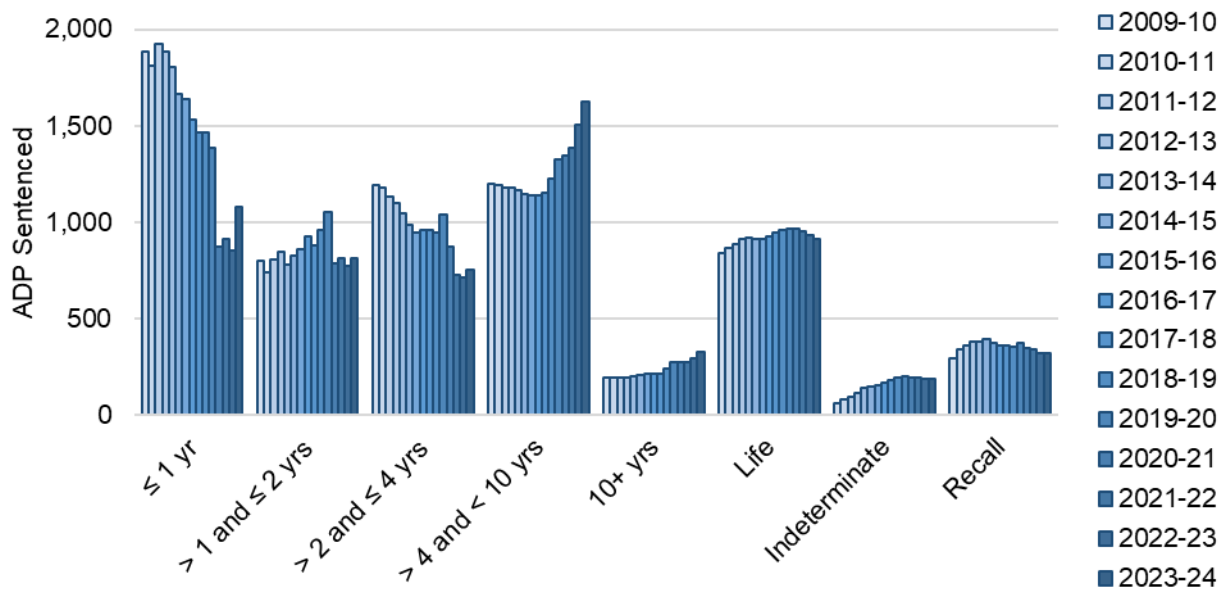
The index sentence is the longest single sentence being served in each occupancy period<sup>x</sup>. Where a person in prison has multiple custodial sentences, the *overall*

sentence length cannot be calculated from the available data. This is due to a lack of information as to whether multiple custodial sentences are to be served consecutively or concurrently. Where an individual is given multiple sentences to be served consecutively (a common occurrence with multiple short sentences), their overall sentence length will be longer than the longest individual sentence.

For clarity of presentation, the range of shorter sentence bands presented in the supplementary tables and in the interactive analysis tool<sup>xi</sup> have been collapsed in the charts in this section.

**Figure 7: There were increases in all determinate sentenced groups in 2023-24, with the largest increases occurring in the groups serving short (<1 year) and long (4-10 year) determinate sentences**

Average daily populations by banded index sentence, 2009-10 to 2023-24



The overall size of the (average daily) sentenced population increased by 8% from 2023-24. Figure 7 shows this pattern was not observed equally across all index sentence bands. While the groups serving index determinate sentences grew, the population serving life and other indeterminate sentences and those on recall actually decreased by a small amount.

The (average daily) population serving index sentences of one year or less increased by the greatest proportion: +26% from 856 in 2022-23 to 1,082 in 2023-24. Meanwhile the population with index sentences between one and four years increased at a rate lower than the sentenced population as a whole (+6% and +8% respectively).

Those with longer index sentences (>4 years) increased broadly in line with the sentenced population as a whole (+150, +8%). The increase in these groups is part of a long-term pattern. The 4-10 year group increased each year from 2017-18 (+472, +41%; from 1,151 in 2017-18) to 1,622 in 2023-24. The 10+ year group has grown since 2012-13 (+134, +69%; from 194 in 2012-13 to 328 in 2023-24).

The share of the sentenced population serving shorter index sentences remains below pre-pandemic levels. In 2019-20, 53% of the sentenced population had index sentences of 4 years or less (the lowest three bands in Figure 7). In 2023-24 this proportion had fallen to 44%.

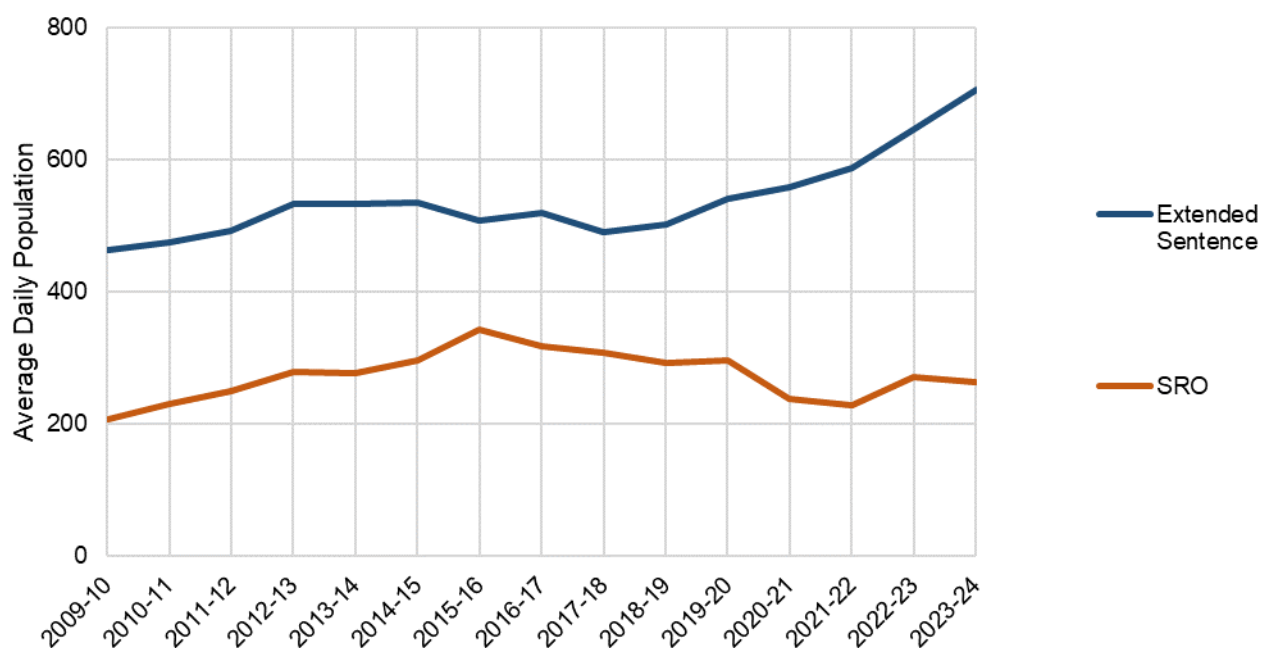
## Statutory Throughcare Orders (NEW)

[[Supplementary Tables P1](#)]

On an average day in 2023-24, around 4% of people (263) in custody were serving one or more sentences with a Supervised Release Order<sup>xii</sup> (SRO) and 12% had an extended sentence<sup>xiii</sup> (706).

**Figure 8: The average daily population with an extended sentence has steadily increased from 2018-19. The average daily population with an SRO fell during the pandemic and has remained at a lower level in 2023-24.**

Average daily population of people with extended sentence and Supervised Release Order (SRO) flags, 2009-10 to 2023-24



As shown in Figure 8, the average daily prison population with an SRO flag fell sharply between 2019-20 and 2020-21, having already declined slowly from 2015-16. The population increased to 270 in 2022-23, but fell to 263 in 2023-24. The proportion of the sentenced population with such conditions attached to their sentence(s) has remained relatively stable over time, varying between 4.0 and 5.5% over the past ten years.

For extended sentences, the absolute numbers and the proportionate share of the population have increased over time. The proportion with an extended sentence was between 7-8.5% from 2009-10 to 2019-20 (541) and has since increased steadily since, reaching 11.7% (706) in 2023-24.

More information on these sentence types is provided in the section Statutory Throughcare Departures (NEW).

### **Further population characteristics**

The following two chapters of this report discuss the average daily populations of Women in Custody and Young People in Custody. Further information on other age groups, as well as information on other available protected characteristics (ethnicity, disability, sexual orientation), and breakdowns by prison establishment and armed forces history are available in the Supplementary Tables B1-8 and M1 accompanying this release.

Further exploration of these data can be conducted through the interactive analytical tool at <https://scotland.shinyapps.io/sg-prison-population-statistics/>.

# Women in Custody

[[Supplementary Tables](#) A2, B2 and M1]

The (average daily) population of women in prison custody increased by around 12.8%, from 282 in 2022-23 to 318 in 2023-24. This is a greater rate of growth than the overall population (+5.8% over the same period), although women still comprised just 4% of the average daily prison population in 2023-24, unchanged from the previous year. The population of men increased by around 5.5% between 2022-23 and 2023-24, from 7,144 to 7,540.

Figure 9 shows that the sentenced population of women increased by 29 (+15%) from 188 in 2022-23 to 217 in 2023-24. The untried population remained at the same level (72) and the population convicted awaiting sentence CAS increased slightly (+8 to 29) over the same period.

**Figure 9: The average daily population of women in prison increased in 2023-24 for the first time in four years, driven by a rise in the sentenced population**

Average daily population of women in prison by legal status, 2009-10 to 2023-24

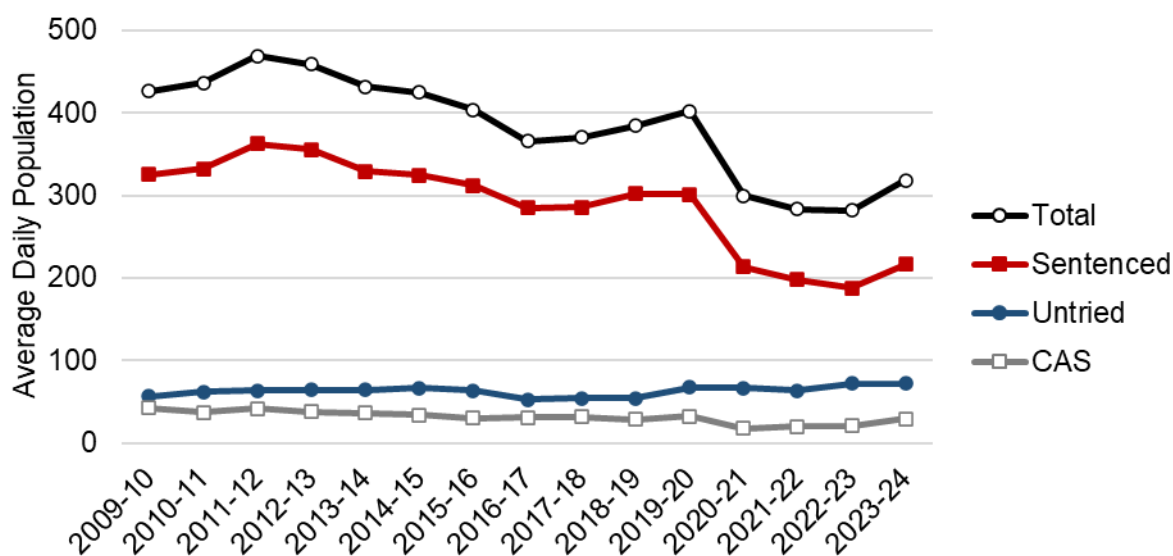
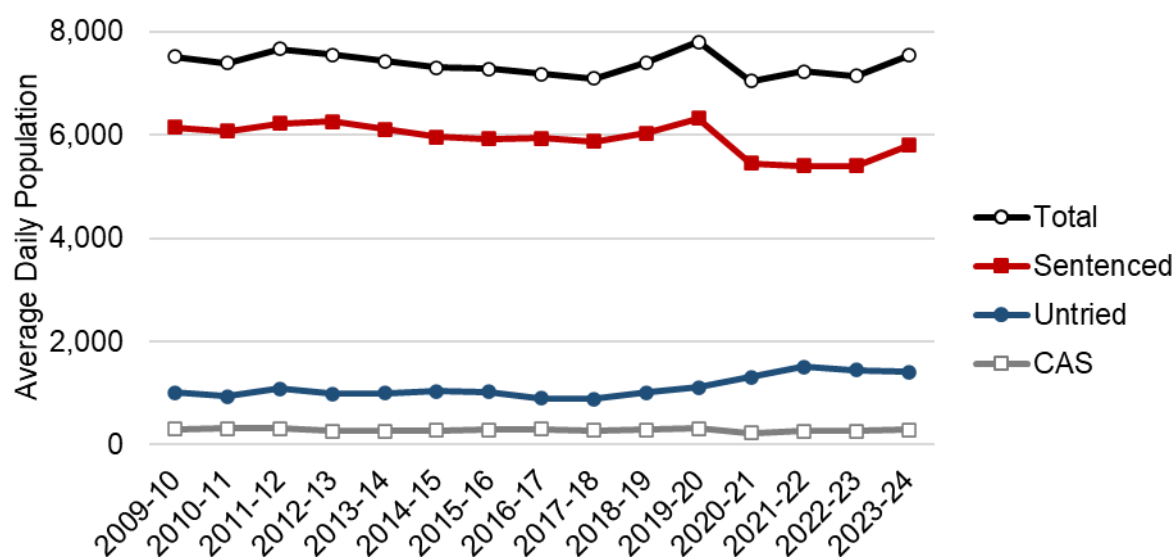


Figure 10 (below) shows that between 2022-23 and 2023-24 the men’s CAS and sentenced populations rose (CAS: from 266 to 287, +7.8%; sentenced: from 5,395 to 5,799, +7.5%), while the men’s untried population fell by 37 (-2.6%) from 1,446 to 1,408.

**Figure 10: The average daily population of men in prison increased in 2023-24, driven by a rise in the sentenced population**

Average daily population of men in prison by legal status, 2009-10 to 2023-24



As a share of their respective populations, the proportion of women on remand on an average day has consistently exceeded that of men. This pattern held between 2022-23 and 2023-24, although there was drop of around one percentage point in both groups over that period (to 32% of women and 22% of men).

## Index offence groups

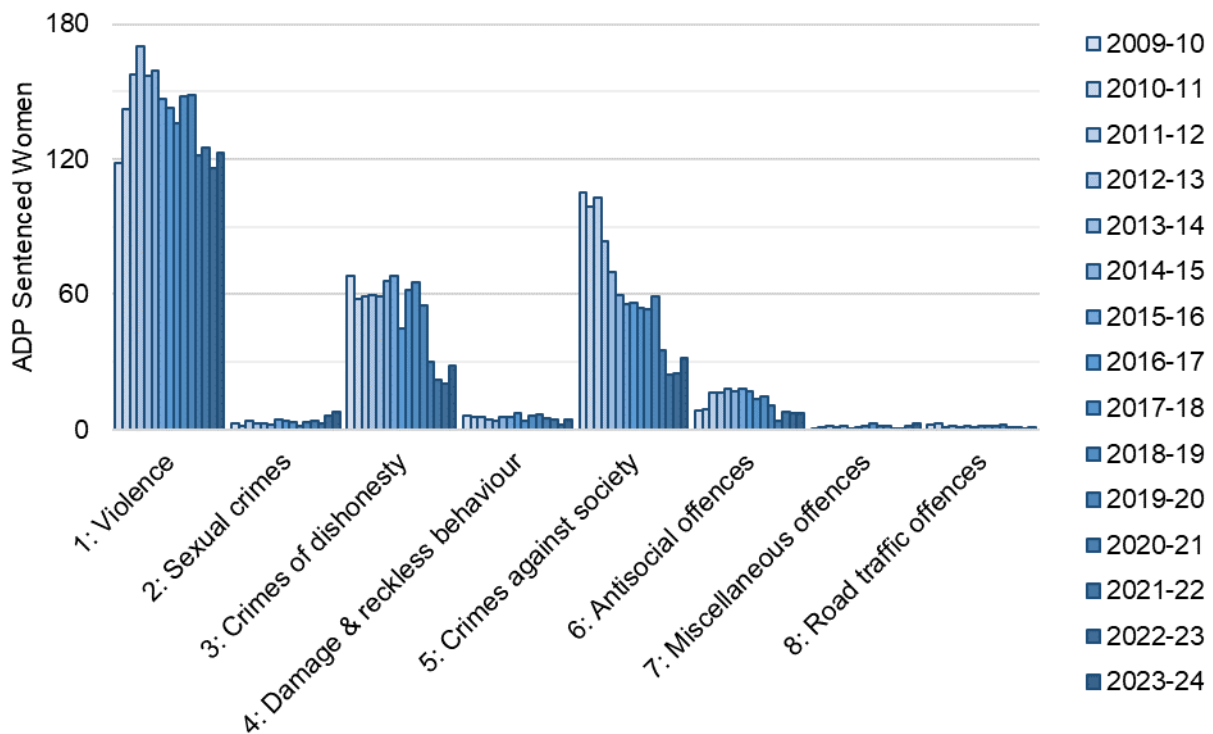
[Supplementary table M2]

In a sentenced population of 217 on the average day in 2023-24, 123 women had index offences<sup>xiv</sup> in Group 1 (Non-sexual crimes of violence), an increase of 6% from 116 in 2022-23. This is slightly lower than the change in the population of sentenced women overall (+15%), but it remained the largest offence group in 2023-24.

The population with index offences in Group 3 (Crimes of dishonesty) grew by 39% (+8 to 28), and the population with index offences in Group 5 (Crimes against society) increased by 25% (+6 to 32). The population with index offences in the other offence groups remained at very low levels in 2023-24 (less than 10 on the average day) (Figure 11).

**Figure 11: Increases between 2022-23 and 2023-24 in the number of women serving sentences for index non-sexual crimes of violence, crimes of dishonesty and crimes against society.**

Sentenced index offence groups of women – average daily populations, 2009-10 to 2023-24



### Index sentences

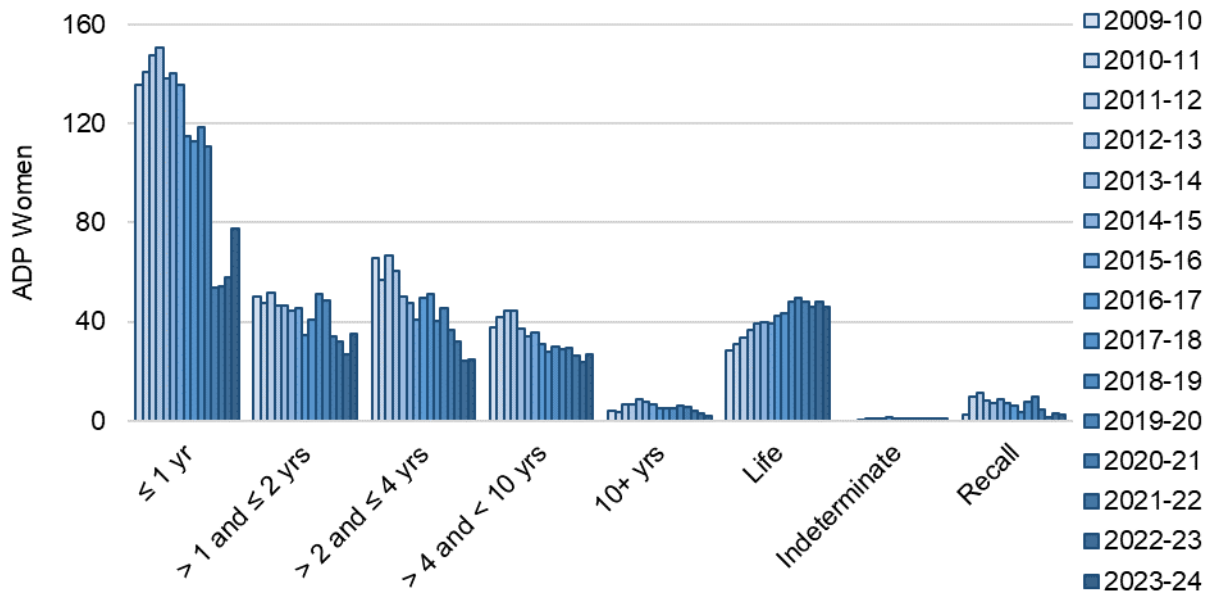
[Supplementary table M3]

Figure 12 shows the index sentence<sup>xv</sup> profile of the (average daily) population of women to 2023-24. Of those serving index sentences of up to 1 year, the population rose 34% from 58 in 2022-23 to 78 in 2023-24. There was also an increase in the '> 1 and ≤ 2 years' (+9 to 35), while the group serving '> 2 and ≤ 4 years' index sentences remained at a similar level (+1 to 25). The population with longer index sentences (> 4 years) also remained similar (+2 to 29).

While the share of the women's sentenced population with shorter index sentences (up to 4 years) remains below pre-pandemic levels (68% in 2019-20), it has increased slightly on last year: in 2022-23 this had fallen to 58%; in 2023-24 it increased again to 64% of the sentenced population of women.

**Figure 12: Increases in the population of women serving short index sentences, as well as smaller increases for sentences of between 4 and less than 10 years in 2023-24**

Index sentence length populations of women in custody – average daily populations, 2009-10 to 2022-23



# Young People in Custody

[[Supplementary Tables](#) A2, B2, and M1]

The number of young people aged under 21 in prison in Scotland grew slightly from 160 in 2022-23 to 168 (+9) in 2023-24, but remains far below historic levels. On an average day in 2009-10 there were 1,012 young people in Scottish prisons, and young people made up 13% of the prison population. In 2023-24 they comprised just 2% of the prison population on the average day.

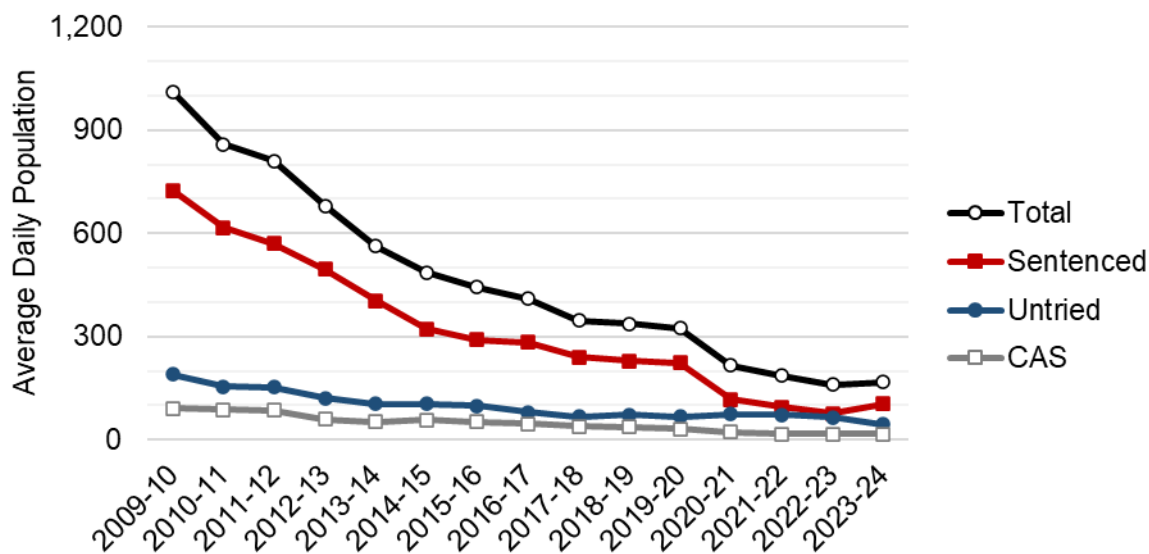
In the context of a growing (average daily) prison population overall, the observed 5.4% growth from last year is in line with broader population trends (+5.8%). This growth occurred entirely among 18 to 20 year olds (+13). The number of under-18s in custody actually fell from 9 to 5 on the average day.

The overall population of young people in custody broken down by legal status is provided in Figure 13. This shows that the sentenced population of young people rose in 2023-24, with 105 sentenced under-21 year olds on the average day, compared to 76 in 2022-23. While the absolute increase is relatively small, the proportionate increase in this group is 37%. Similarly, the untried population fell by around 31% in 2023-24 (from 64 in 2022-23 to 45), while the CAS population remained the same over the reporting period (17 in both 2022-23 and 2023-24).

The proportion of young people in custody on remand (untried and CAS) has been consistently higher than that of the prison population as a whole, and pre-pandemic was around 31%. In 2022-23 it was 51%, however the population changes outlined above led to lower remand rate of 36% in 2023-24.

**Figure 13: While the population of young people in custody has been in long-term decline, there was a small increase in 2023-24. The number of sentenced young people on an average day increased in 2023-24 while the number untried fell**

Young people (under 21) in prison by legal status – average daily populations, 2009-10 to 2023-24



### Index offence groups

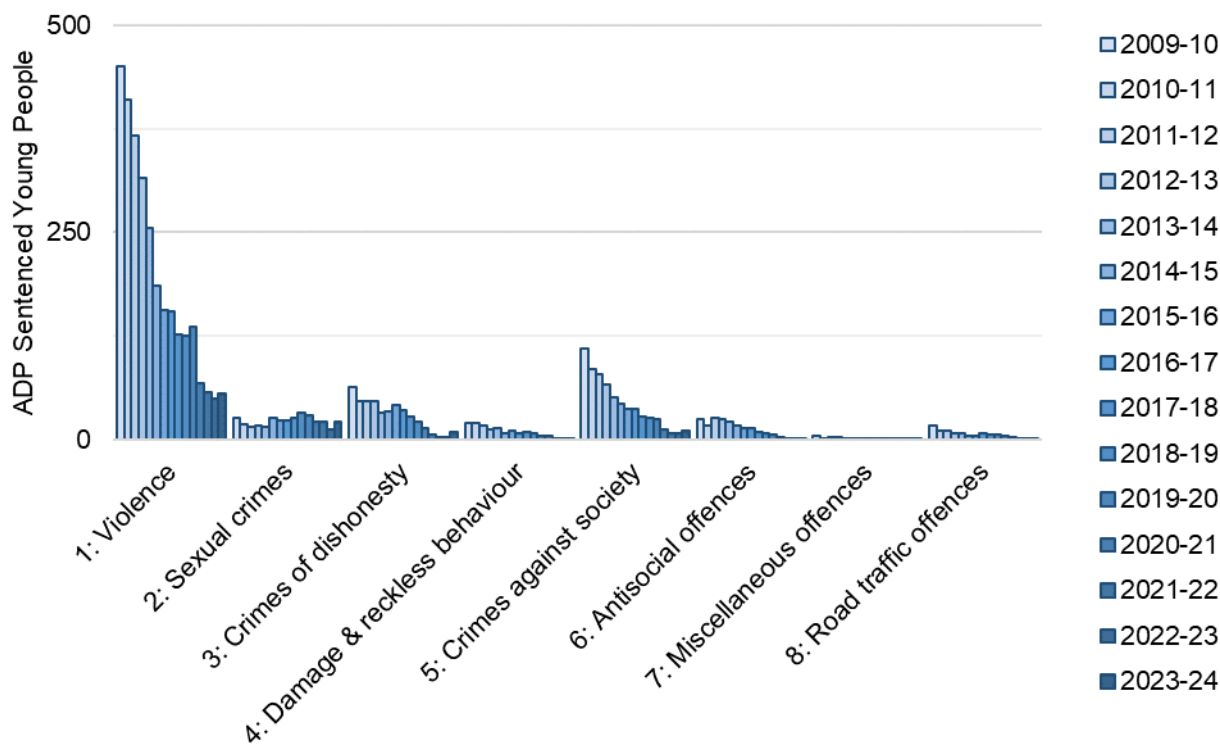
[[Supplementary Tables](#) M2]

As shown in Figure 14, the overall growth in the (average daily) sentenced population of young people was driven by increases across all index offence groups between 2022-23 and 2023-24.

In Group 1 (Non-sexual crimes of violence) and Group 2 (Sexual crimes), the populations returned to approximately the level observed in 2021-22. No index offence group (nor the sentenced population of young people as a whole) has returned to its pre-pandemic level. A notable increase was observed in the population with index offences in Group 3 (Dishonesty), although the absolute numbers are very small: from 4 to 10 on the average day.

**Figure 14: The overall growth in the sentenced population of young people in 2023-24 is driven by increases across multiple index offence groups**

Index offence groups of sentenced young people (under 21 years) – average daily populations, 2009-10 to 2023-24



Those with index offences in Group 1 (Non-sexual crimes of violence) continued to account for the largest group in the sentenced population of young people in 2023-24 at 53% (56 sentenced young people on the average day), however this is a smaller proportion than has been observed since 2018-19 (ranging as it has between 54% and 64% for the past five years).

**Index sentences**

[Supplementary table M3]

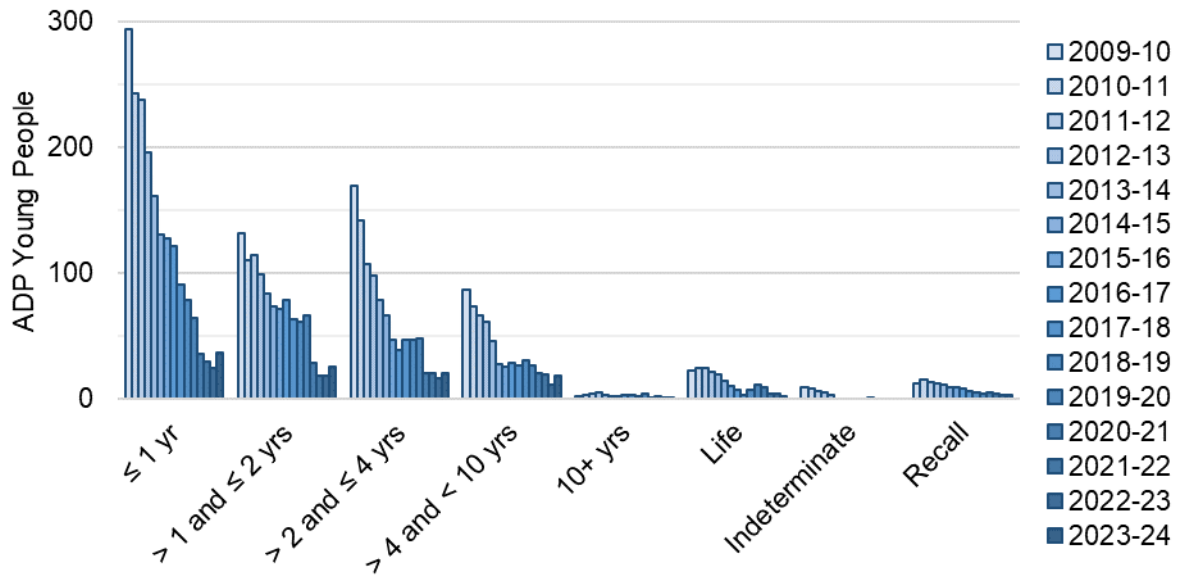
Figure 15 shows the index sentence<sup>xvi</sup> profile of the (average daily) population of young people under 21.

There were increases across most index sentence bands in 2023-24. The largest proportional increase was observed in the group with index sentences between 4 and 10 years, which grew by 68% from around 11 in 2022-23 to 18 in 2023-24.

Population increases in the index sentence bands of ‘≤ 1 year’ and ‘> 1 and ≤ 2 years’ are slightly lower than the overall change, increasing by 53% (+12 from 24 to 36) and 38% (+7 from 18 to 25) respectively. The increase in the ‘> 2 and ≤ 4 years’ band was just 25% (+4 from 16 to 20) – lower than the overall population change.

**Figure 15: The largest increases across the sentenced population of young people in 2023-24 has been in the shortest index sentence groups and the between 4 and less than 10 year group**

Index sentences of young people (under 21) – average daily populations, 2009-10 to 2023-24



# Sentenced Index Offences

[\[Supplementary Tables M2\]](#)

This section provides detailed breakdowns of Index Offence Groups into index offence categories for the average daily sentenced population<sup>xvii</sup>. The 50 index offence categories (and eight over-arching offence groups) provide more high-level detail on the offence profile of the prison population. This method of classification allows presentation of a summary offence profile, but does not indicate where multiple offences are present, nor does it provide charge level data.

## Group 1 – Non-sexual crimes of violence

The (average daily) sentenced population with Group 1 index offences increased 4% from 2,617 in 2022-23 to 2,722 in 2023-24. This group comprised 45% of the sentenced population.

The largest offence category in Group 1 remains 'Serious assault and attempted murder'. The sentenced (average daily) population with this index offence was 1,107 in 2023-24, an increase of 60 from 2022-23 (+6% from 1,047).

'Common Assault' increased by 45 from the previous year to 575 on the average day in 2023-24 (compared to 530 in 2022-23), and became the second largest category in Group 1 (overtaking 'Murder and culpable homicide'). This category remains lower than pre-pandemic levels (610 in 2019-20).

The population with an index offence of 'Murder and culpable homicide' fell slightly. On the average day in 2023-24 it was 564, compared to 571 and 573 in 2021-22 and 2022-23 respectively.

There was a 9% reduction in the sentenced population with the index offence of 'Robbery', from 318 in 2022-23 to 288 in 2023-24. This continues a longer term downward trend in the size of this group from 2019-20.

The largest growth in this group was a 64% increase in the sentenced population with an index 'Domestic Abuse Act' offence, although the numbers remain relatively small (from 58 in 2022-23 to 94 in 2023-24). Offences in this category are those covered by the 2018 Act<sup>xviii</sup> and therefore do not cover the totality of domestic abuse related offences in the prison population.

## Group 2 – Sexual offences

The (average daily) sentenced population with Group 2 index offences increased 12% from 1,246 in 2022-23 to 1,392 in 2023-24. This group comprised 23% of the sentenced population.

In line with the previously observed rising trend<sup>xix</sup>, the sentenced population with an index offence of 'Rape and attempted rape' increased between 2022-23 and 2023-24. This population rose by 15% from around 853 in 2022-23 to 981 on an average day in 2023-24, and remains the largest population category in Group 2.

The second largest category in 2023-24 were those serving sentences for an index offence of 'Sexual assault', which increased 3% from 243 in 2022-23 to 251.

The third largest category in group 2, were those serving sentences for index offences of 'Indecent photos of children', which decreased slightly from 71 in 2022-23 to 67 in 2023-24.

Increases were observed in all other categories of sexual offence, which together accounted for 93 people on the average day in 2023-24 (+13 from 2022-23).

### **Group 3 – Crimes of dishonesty**

The (average daily) sentenced population with Group 3 index offences increased 17% from 294 in 2022-23 to 344 in 2023-24. This group comprised 6% of the sentenced population.

The largest category 'Housebreaking' saw a slight increase from 135 in 2022-23 to around 138 in 2023-24 (+2%). Greater proportionate increases were seen across other categories although the absolute numbers are small. The population serving sentences for an index offence of 'Shoplifting' – the second largest category in this group – increased from 46 to 69 (+49%). The third largest category, 'Other theft' increased by 5 to 37 in 2023-24 (+16%).

The absolute numbers in other categories accounted for 101 people on the average day in 2023-24 (+20 from 2022-23).

### **Group 4 – Damage and reckless behaviour**

The (average daily) sentenced population with Group 4 index offences increased 14% from 75 in 2022-23 to 86 in 2023-24. This group comprised just 1.4% of the sentenced population in 2023-24.

There were small increases in the population with an index offence of 'Fire-raising' (+11 to 47) and 'Vandalism' (+2 to 19) in 2023-24, while the population with an index offence of 'Reckless conduct' fell slightly (-2 to 20).

### **Group 5 – Crimes against society**

The (average daily) sentenced population with Group 5 index offences increased 13% from 723 in 2022-23 to 817 in 2023-24. This group comprised 14% of the sentenced population.

The largest index offence category in group 5 in 2023-24 was 'Drugs – Supply'. This population group rose by 8% from 357 in 2022-23 to 384 in 2023-24.

The largest proportionate increases were in 'Other crimes againsts society' (+34% from 42 to 57) and in the 'Crimes against public justice' offence category, which increased 22% from 155 to 189 on the average day in 2023-24. The latter has overtaken 'Weapons possession' as the second largest category in this group, 'Weapons possession' having increased to a lesser extent over the same period from 160 to 179 (+12%) on the average day in 2023-24.

## **Group 6 – Antisocial offences**

The (average daily) sentenced population with Group 6 index offences increased 7% from 186 in 2022-23 to 199 in 2023-24. This group comprised just 3.3% of the sentenced population in this reporting year.

Around 95% of this population group had an index offence of 'Threatening and abusive behaviour' (190, +12 in 2023-24). The remainder of this population group had index offences of 'Community and public order offences' (6, +1 in 2023-24) and 'Racially aggravated conduct' (3, -0.3 in 2023-24).

## **Group 7 – Miscellaneous offences**

The (average daily) sentenced population with Group 7 index offences increased 13% from 116 in 2022-23 to 131 in 2023-24. This group comprised just 2.2% of the sentenced population.

In 2023-24, around 54% of the population with Group 7 index offences had index 'Licensing offences' (71), while a further 57 had index 'Other miscellaneous offences'. On the average day in 2023-24 there were 3 with index 'Wildlife offences'.

## **Group 8 – Road traffic offences**

The (average daily) sentenced population with Group 8 index offences increased 11% from 79 in 2022-23 to 87 in 2023-24. This group comprised 1.4% of the sentenced population.

As in previous reporting years, those with an index offence of 'Dangerous and careless driving' made up on average around 57% (50, +4 in 2023-24) of this population group. Those with an index offence of 'Unlawful use of vehicle' was unchanged from 2022-23 at 23, and those with an index offence of 'Driving under the influence' rose +4 to 14 in 2023-24.

# Remand Index (alleged) Offences

The remand population comprises individuals who are untried and those who are convicted awaiting sentence (CAS).<sup>xx</sup>

This section provides the breakdown of the (average daily) remand population by index (alleged) offence group, followed by a further breakdown by index (alleged) offence categories. Detail of the method for deriving index (alleged) offence is provided in the technical manual.<sup>xxi</sup>

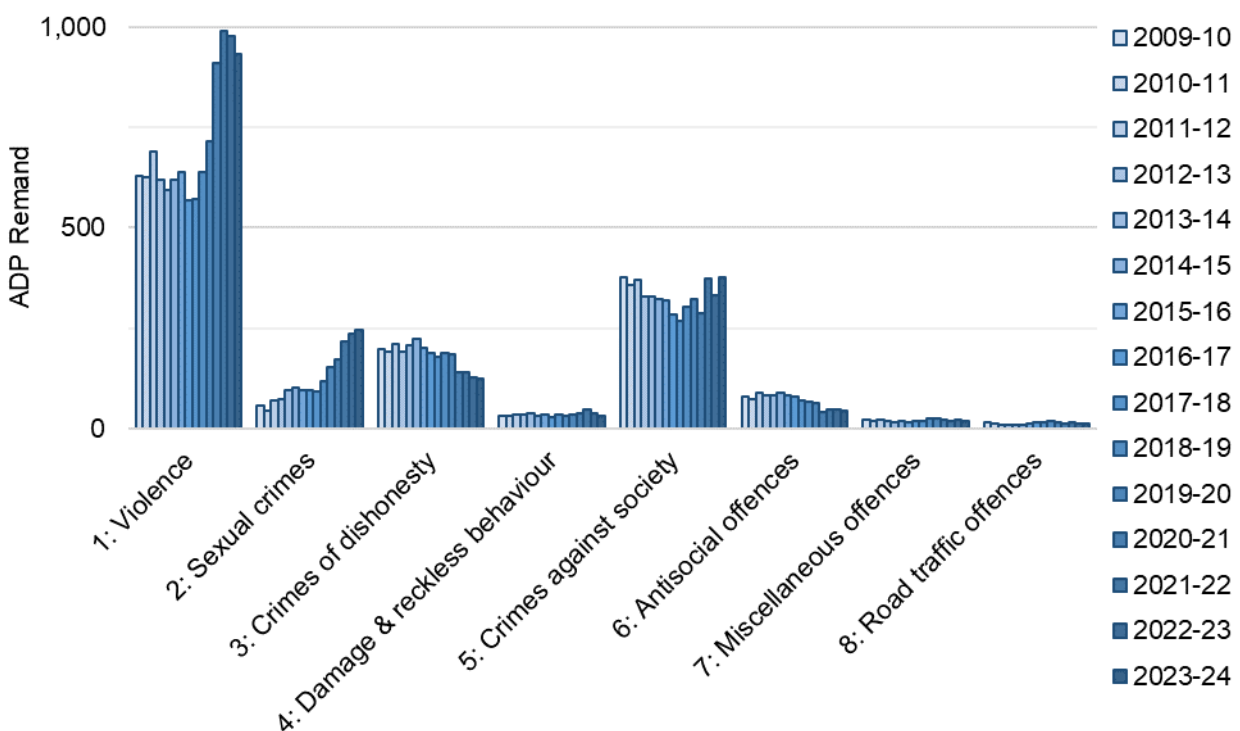
## Remand index (alleged) offence groups

[[Supplementary Tables M2](#)]

While the overall (average daily) remand population remained broadly stable between 2022-23 to 2023-24, there were some fluctuations among index (alleged) offence<sup>xxii</sup> groups within it (see Figure 16).

**Figure 16: While the average daily remand population remained high overall in 2023-24, the number with an alleged index offence in group 1 fell and the number with alleged index offences in groups 2 and 5 increased.**

Remand offence groups – average daily populations, 2009-10 to 2023-24



Those accused of index Group 1 (Non-sexual crimes of violence) offences have consistently been the largest group in the (average daily) remand population. In 2023-24 the population of this group was 934 on an average day, a small reduction (-44, -5%) from 2022-23. The proportion of the remand population with alleged offences in this group fell in 2023-24, from 54% in 2022-23 to 52%.

The remand population accused of index Group 2 (Sexual) offences continued to increase. This group grew by 4% in 2023-24, from 237 in 2022-23 to 247, and comprised 14% of the overall (average daily) remand population.

Those accused of index Group 5 (Crimes against society) offences increased in 2022-23 by 13%, from 331 in 2022-23 to 375 in 2023-24. Group 5 remains the second largest category at 21% of the overall (average daily) remand population.

The populations across all other alleged offence groups fell by small amounts in 2023-24 and together made up 13% of the remand population.

## **Index (alleged) offence categories**

[\[Supplementary Tables M2\]](#)

This section provides a breakdown of the (average daily) remand population into categories of index (alleged) offence<sup>xxiii</sup>.

### **Group 1 – Non-sexual crimes of violence**

Among the (average daily) population held on remand for alleged Group 1 (Non-sexual crimes of violence) offences in 2023-24, the largest index offence category was 'Serious assault and attempted murder'. This index offence category made up 20% of the (average daily) population on remand overall, and 38% of those accused of index offences in Group 1. The (average daily) remand population accused of this index offence was 356 in 2023-24 (having decreased by 21 from 378 in 2022-23).

The population accused of 'Common assault' reduced by 11% in 2023-24 to 309, from 346 in 2022-23. Those accused of 'Common assault' comprised 17% of the (average daily) remand population in 2023-24. This is a reduction from 19% in 2022-23.

The remand population accused of an index offence of 'Robbery' increased slightly between 2022-23 and 2023-24, from 104 to 106. The (average daily) remand population accused of 'Murder and culpable homicide' increased by 7 over the same period to 63.

The remand population accused of index 'Domestic Abuse offences' continued its longer term increase, rising from 58 to 66 (+14%) between 2022-23 and 2023-24.

### **Group 2 – Sexual offences**

Among the (average daily) remand population accused of index Group 2 (Sexual) offences, the largest group are those accused of 'Rape & attempted rape'. This group increased from 147 in 2022-23 to 151 in 2023-24, comprising 61% of the (average daily) remand population accused of Group 2 index offences and 8% of the (average daily) remand population overall.

Those accused of 'Sexual assault' were the second largest population group amongst those accused of Group 2 index offences in 2023-24, remaining at a similar level to the previous reporting year (+1 to 40 in 2023-24).

Small increases were also observed between 2022-23 and 2023-24 in the (average daily) remand populations accused of 'Indecent photos of children' (+2 to 14), 'Crimes associated with prostitution' (+2 to 4), and 'Other sexual crimes' (+1 to 13).

### **Group 5 – Crimes against society**

The 13% increase in the (average daily) remand population accused of Group 5 offences in 2023-24 was driven by a 19% increase in the largest category - 'Drugs (supply)' offences (+23 to 146). There was also a 20% increase in the population accused of 'Weapons possession' (+14 to 83).

### **Other offence categories**

Further information on the offence categories in Groups 3,4,6,7, and 8 is contained in the supplementary table (M2) and the Interactive Analysis Tool<sup>xxiv</sup>.

All of these groups saw small reductions in their (average daily) population (-20 across all groups from 2022-23). Together they comprised 13% of the remand population, or 228 population on the average day.

# Individuals Experiencing Imprisonment

[[Supplementary Tables](#) B2 and M1]

The number of individuals<sup>xxv</sup> who spent any time in prison increased by 6% in 2023-24 (+817 from 14,531 in 2022-23 to 15,348 - see Figure 17).

Prior to the pandemic there was a long term downward trend in the numbers of individuals experiencing imprisonment. During 2020-21 there was a sharp decrease in the number of individuals, and in the following two reporting years there were small increases. In 2023-24 the rise in the number of individuals was greater. Nevertheless, the number of individuals experiencing imprisonment remains 11% below pre-pandemic levels (17,312 in 2019-20).

Note that the measure of individuals differs from the average daily population measures discussed in previous chapters. Here, each individual is given equal weight regardless of how long they spent in prison.

**Figure 17: The number of individuals experiencing custody has risen in 2023-24, but remains lower than the pre-pandemic levels**

Unique individuals spending any time in prison, 2009-10 to 2023-24

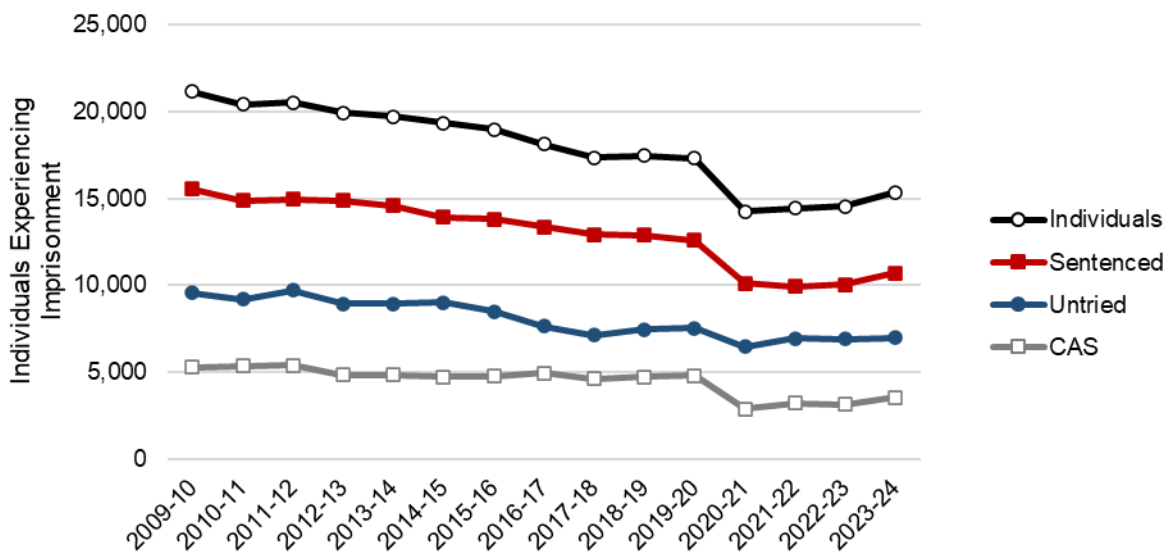


Figure 17 shows that there was a broad overall stability in the number of individuals experiencing imprisonment between 2021-22 and 2022-23, a pattern that holds when looking at the legal status breakdown of individuals experiencing custody<sup>xxvi</sup>. The increase in 2023-24 is the result of more individuals spending time sentenced (+679 from 2022-23 to 10,712; +7%) or convicted awaiting sentence (+419 from 2022-23 to 3,548; +11%). The number experiencing time in custody as untried has remained broadly stable across the period 2021-22 to 2023-24.

Note that an individual can have more than one legal status type each year and is counted for each status held. This means that the total number of individuals across

the legal status types will be more than the total number of individuals held in custody in each year.

The rest of this section examines the characteristics of individuals experiencing imprisonment.

## **Gender**

[[Supplementary Tables](#) B2 and M1]

In 2023-24, women made up 6.5% of individuals experiencing imprisonment.

The number of both men and women experiencing imprisonment increased in 2023-24. In 2023-24, 14,345 men (+678 from 2022-23, +5%) and 1,001 women (+141 from 2022-23, +16%) experienced imprisonment.

While this is an increase on the previous reporting year, the number of individuals of either gender spending time in prison remains lower than pre-pandemic: down 1,698 (-11%) for men and 264 (-21%) for women.

Breaking down the number of individuals by legal status reveals different patterns for men and women. The breakdown by legal status for men broadly follows the overall pattern displayed in Figure 17, with increases across sentenced and convicted awaiting sentence statuses only.

For women, the numbers experiencing imprisonment increased across all legal statuses: convicted awaiting sentence grew by 37% to 345, sentenced by 19% to 524 and untried by 12% to 527.

## **Age**

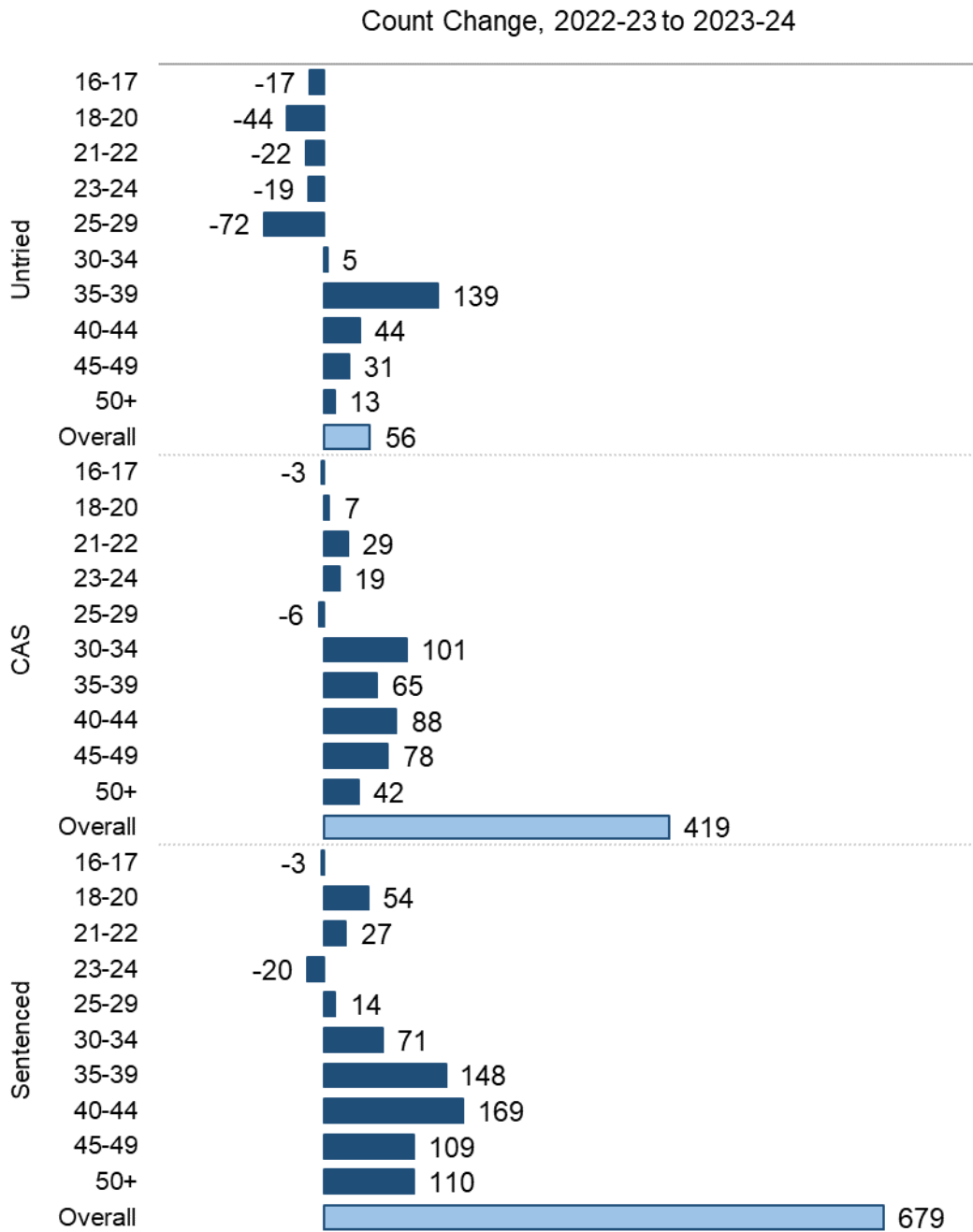
[[Supplementary Tables](#) B2 and M1]

Over the longer term (from 2009-10), there has been a reduction in the number of young people and younger adults (those under 30 years) experiencing imprisonment, but broad stability or increases in the number of those in the older adult age bands (30 years or over). The highest proportionate increases have occurred amongst adults aged 50 years or over.

In line with this longer term trend, the increase in the number of individuals experiencing imprisonment in 2023-24 is driven almost entirely by increases in the number of older adults (those aged 30 years or over – see Figure 18). While there were slight increases in individuals aged 18-22 in 2023-24 (+4 total), a pattern contrary to the long term downward trend, there were observable reductions in the numbers of younger adults spending time as untried.

**Figure 18: Increases in the number of individuals overall, particularly among those spending time sentenced, are concentrated in age bands 30+ years**

Change in number of individuals experiencing imprisonment by legal status and age, 2022-23 to 2023-24



The previously reported trend<sup>xxvii</sup> of an aging group of people experiencing imprisonment continued in 2023-24. The average age of individuals spending any time in prison in 2013-14 was 33.4 years; by 2023-24 this had risen to 37.8. The proportion of individuals experiencing imprisonment that were aged 50 years or older has more than doubled in the past fifteen years, rising from 6.6% in 2009-10 to 15.1% in 2023-24.

## Ethnicity

[[Supplementary Tables B3](#)]

The majority of individuals experiencing imprisonment in 2023-24 identified as “White” (93%)<sup>xxviii</sup>.

Reflecting the overall pattern of individuals experiencing imprisonment, there were small increases in the number of individuals experiencing imprisonment across ethnic groups between 2022-23 and 2023-24: “White” (+672 to 14,286); “Asian” (+30 to 356); “Other ethnic group” (+81 to 312); “African, Caribbean or Black” (+28 to 303); “Mixed or Multiple” (+8 to 89). Overall there was little change to the proportion of individuals each ethnic group represented between 2022-23 and 2023-24.

The release of census data from March 2022 provides us with a common population base to compare imprisonment rates over the past three years<sup>xxix</sup>. Within 2023-24, we see that the imprisonment rate in the “White” ethnicity group is 3.35 per 1000 population. For the “Asian” group it is 2.18 and for the “Mixed Or Multiple” group it is 2.47 per 1000. Increases over time in these rates are broadly aligned.

We see higher rates than the “White” majority in the groups “African Caribbean or Black” and “Other ethnic group”. For individuals in the “African Caribbean or Black” group, the rate increased steadily from 5.71 in 2021-22 to 6.01 in 2022-23 and 6.63 per 1000 in 2023-24. The increase for individuals in the “Other ethnic group” grew more sharply, from 5.22 in 2021-22 through 6.13 in 2022-23 to 8.27 per 1000 in 2023-24.

Ethnic groupings have been aggregated in this report, which is likely to mask variations within each group. Further disaggregation and analysis of the age distribution of these groups is required to understand the dynamic underlying these changes.

## Nationality (NEW)

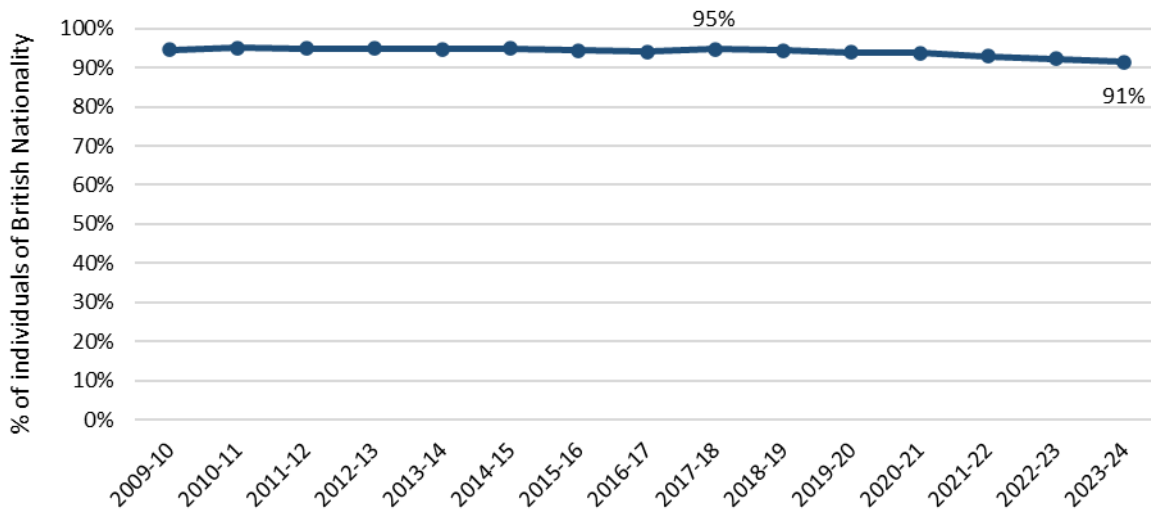
[Supplementary table B8]

The nationality of individuals experiencing imprisonment has been added for the statistical release of 2023-24 following feedback from our stakeholders<sup>xxx</sup>.

British nationals comprise more than 90% of individuals experiencing imprisonment in 2023-24. However the proportion of individuals who are not British nationals has increased from 5% in 2017-18 to 9% in 2023-24.

**Figure 19: The proportion of individuals spending any time in custody who were British nationals has fallen since 2017-18**

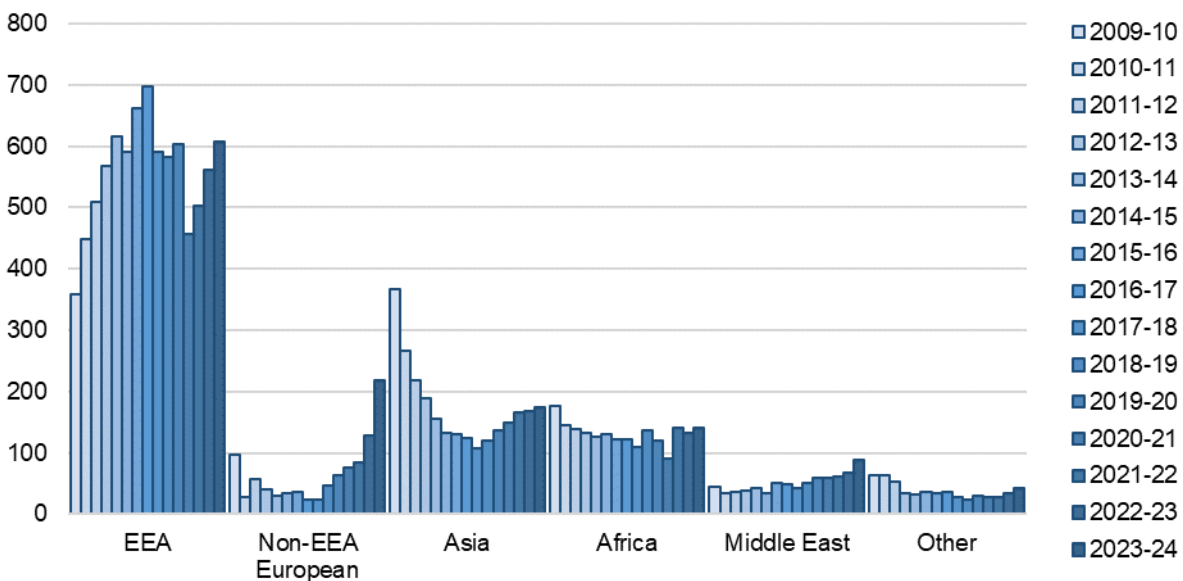
Proportion of individuals of British nationality, 2009-10 through 2023-24



Over the period 2010-11 to 2023-24, individuals from the European Economic Area comprise the largest non-British national group experiencing imprisonment (607 in 2023-24). There has been substantial growth in individuals from non-EEA European countries, as well as increases in the number of people from Asian and Middle Eastern nations spending time in Scottish prisons. This follows a period of significant decline in Asian nationals in experiencing imprisonment in Scotland from 2009-10 through 2017-18.

**Figure 20: Individuals from the European Economic Area make up the largest non-British national group spending any time in custody since 2010-11.**

Number of individuals of non-British nationality by region, 2009-10 through 2023-24



## **Other individual level characteristics**

Statistics on other available protected characteristics (disability, sexual orientation, and marital status) and armed forces history are provided in the Supplementary Tables B4-7 accompanying this publication.

# Population In-Flows

## Arrivals to prison

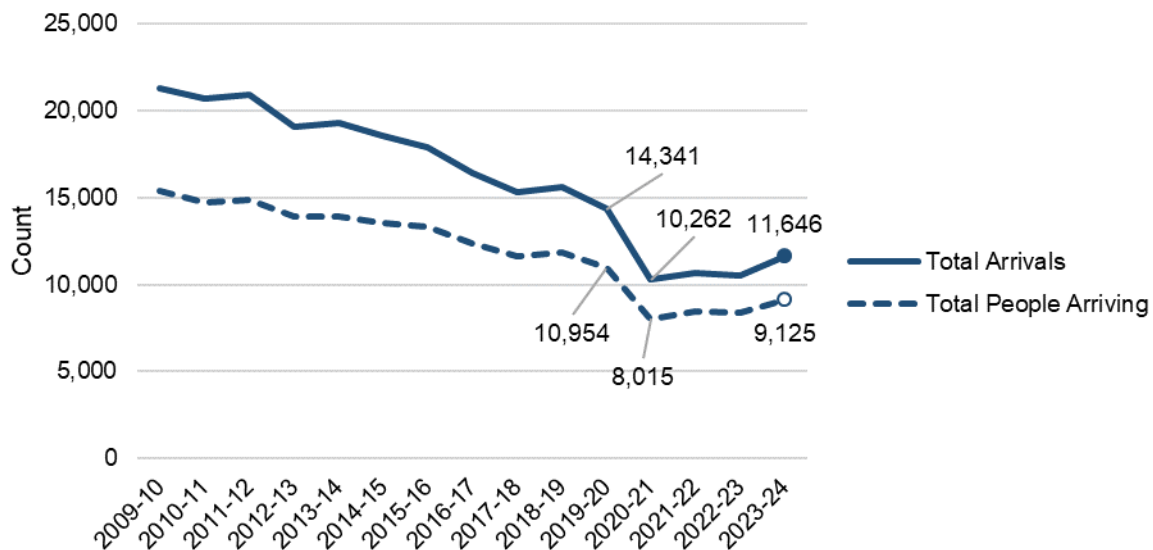
[Supplementary Table C1]

An arrival<sup>xxxi</sup> is where a continuous period of imprisonment begins for an individual, and is only counted as such if the arrival occurred on a separate day from any previous departure for that individual. Individuals can arrive to custody more than once each year and so a single individual may be counted more than once when analysing arrivals.

In line with the patterns reported for the average daily population and the number of individuals spending time in custody, there was an increase in arrivals to prison between 2022-23 and 2023-24. There were 11,646 arrivals to custody in 2023-24, an increase of around 11% from 2022-23. This is the largest recorded increase in arrivals over this time series. Nevertheless, the number of arrivals remains considerably lower than pre-pandemic levels (see Figure 21).

**Figure 21: Arrivals to custody have increased in 2023-24 but remain below pre-pandemic levels**

Number of arrivals, and unique individuals arriving, 2009-10 to 2023-24



## Arrivals by legal status

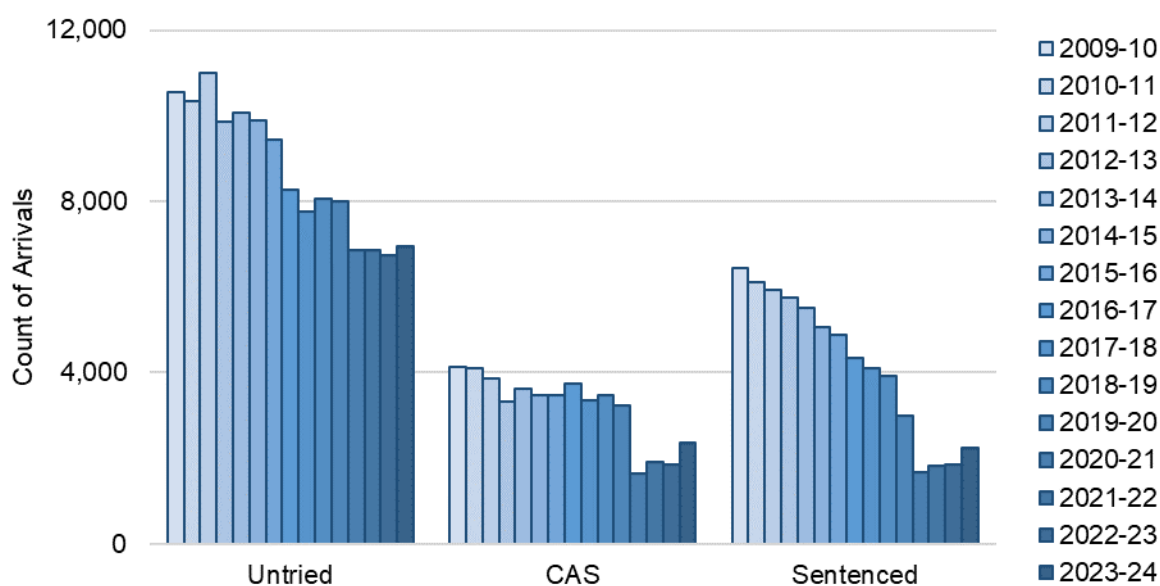
[Supplementary Table O1]

Figure 22 shows the number of arrivals varies by legal status category over time. While there have been increases across the last reporting year, untried and sentenced arrivals have followed an overall long-term downward trend. Arrivals across all legal status categories remain below pre-pandemic levels. The distribution of arrivals across the categories has been broadly similar for the past two reporting years but in 2023-24 this pattern has shifted. Untried arrivals

accounted for 60% of all arrivals to prison in 2023-24. This was a lower share than the rest of the post-pandemic period (64% in 2021-22 and 2022-23, 67% in 2020-21), but higher than the pre-pandemic period. Volume increases in sentenced and convicted awaiting sentence (CAS) arrivals has led to their share of the total arrivals increasing to 19% and 20% respectively in 2023-24.

**Figure 22: Arrivals increased across all legal status categories in 2023-24, but particular rises observed in Convicted Awaiting Sentence (CAS) and Sentenced arrivals**

Arrivals by legal status, 2009-10 to 2023-24



### Arrivals by local authority

[[Supplementary Tables C2](#)]

The overall national rate of arrival to prison increased by a small amount from 1.8 per 1,000 head of population in 2022-23 to 2.0 in 2023-24<sup>xxxii</sup>.

Dundee City retained the highest rate of arrival at 3.7 per 1,000 population in 2023-24. Local authorities with similarly high rates include Clackmannshire at 3.6 per 1,000 and East Ayrshire at 3.5, and Glasgow City and North Ayrshire at 3.3 per 1,000.

### Arrivals by deprivation

[[Supplementary Tables C3](#)]

There was little change to the previously reported pattern of arrivals to prison being most likely from the 10% most deprived areas of Scotland<sup>xxxiii</sup>. The 10% most deprived areas of Scotland accounted for 31% of all arrivals to prison in 2023-24. This is a slightly lower rate than the 33-36% level over the decade to 2020-21.

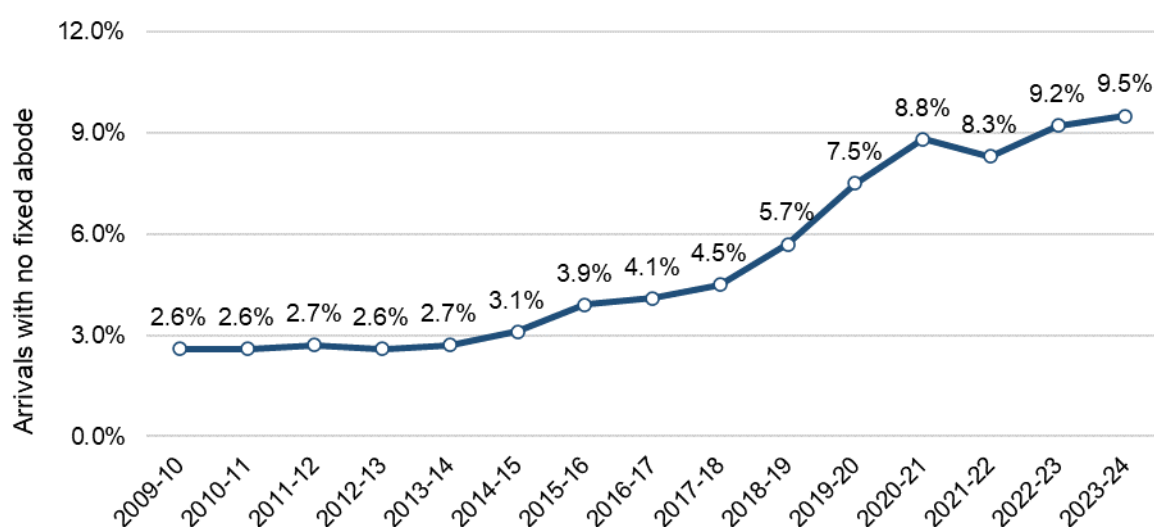
## Arrivals by no fixed abode

[[Supplementary Tables C4](#)]

In the context of a long-term decline in the number of arrivals to custody, the volume of no fixed abode arrivals has increased over the decade 2014-15 to 2023-24 (from 577 to 1,105). It follows that in 2023-24, 9.5% of arrivals to prison were individuals registered as of no fixed abode<sup>xxxiv</sup> (Figure 23), continuing an upward trend in this proportion over the same period.

**Figure 23: People arriving to prison who identify themselves of being of no fixed abode comprise a growing proportion of arrivals over the decade 2014-15 to 2023-24**

Proportion of arrivals of individuals with no fixed abode continues to increase



## Arrivals by offence group

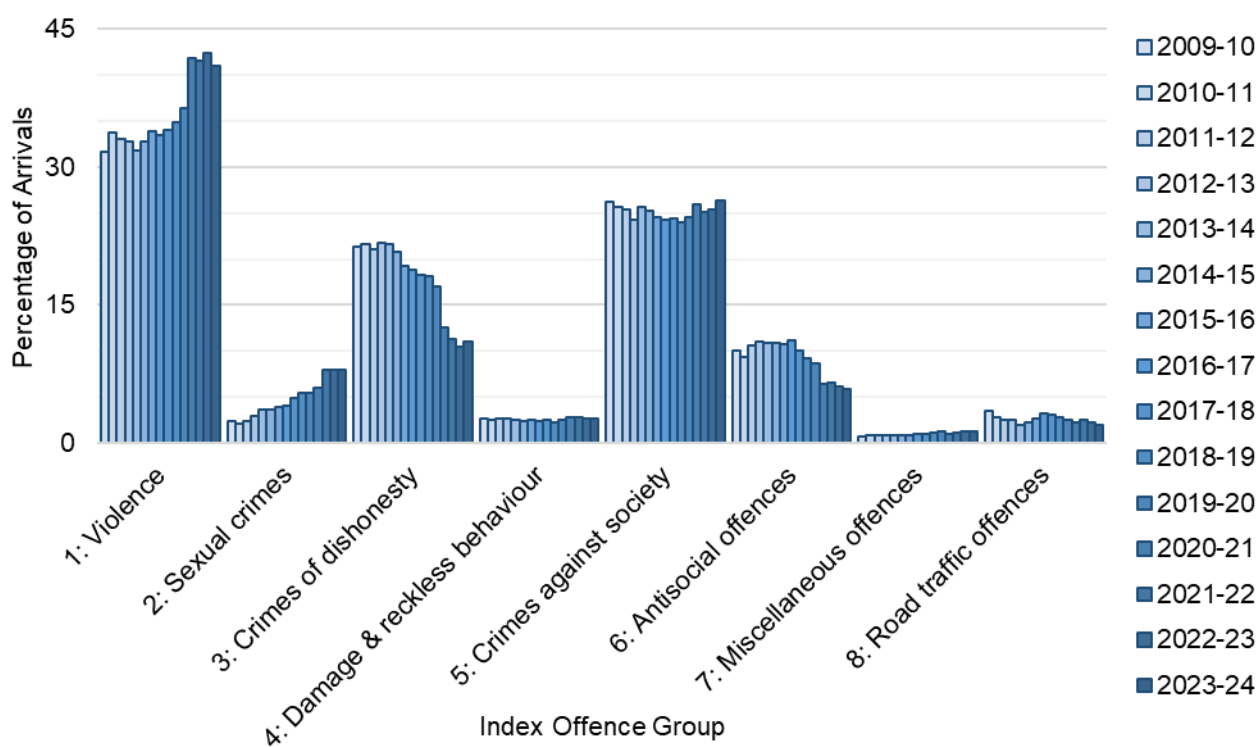
[[Supplementary Tables O6](#)]

The overall number of arrivals increased by 11% in 2023-24 compared with the previous year. This was not equal across the index offence groupings. The number of arrivals with an index offence in Group 1 (Non-sexual crimes of violence) or Group 5 (Crimes against society) increased by 7% and 15% respectively: from 4,452 in 2022-23 to 4,779 in 2023-24 for Group 1 offences, and from 2,670 to 3,059 for Group 5. Arrivals with index offences in Group 3 (Dishonesty) increased by 18% (+192) to 1,281, and Group 2 (Sexual) offences by 11% (+90) to 933 arrivals in 2023-24.

While there were differences in volume increase across the index offence groups, their proportionate share of arrivals remained similar in 2023-24 (Figure 24). In 2023-24, Group 3 (Crimes of dishonesty) accounted for 11% of arrivals (+1 percentage point or pp), and Group 5 (Crimes against society) for 26% (+1pp.). Group 1 (Non-sexual crimes of violence) offences remained the most common index offence on arrival, accounting for 41% of those arriving to custody in 2023-24 (-1pp).

**Figure 24: The share of arrivals to prison across the index offence groups remained stable in 2023-24**

Proportion of arrivals by Index Offence Groups, 2009-10 to 2023-24



# Population Transitions and Out-Flows

This section of the report examines transitions within, and departures from, custody in the reporting year. Individuals can enter custody with any one of the legal statuses (untried, convicted awaiting sentence, or sentenced), and may transition through other statuses before departing<sup>xxxv</sup>. For the custodial ‘journeys’ captured in the cellWise data, it is possible to measure and report overall time in custody, as well as time spent with a remand status. Where available, the reasons for an individuals’ release is provided in the section Liberations.

## Departures and transitions

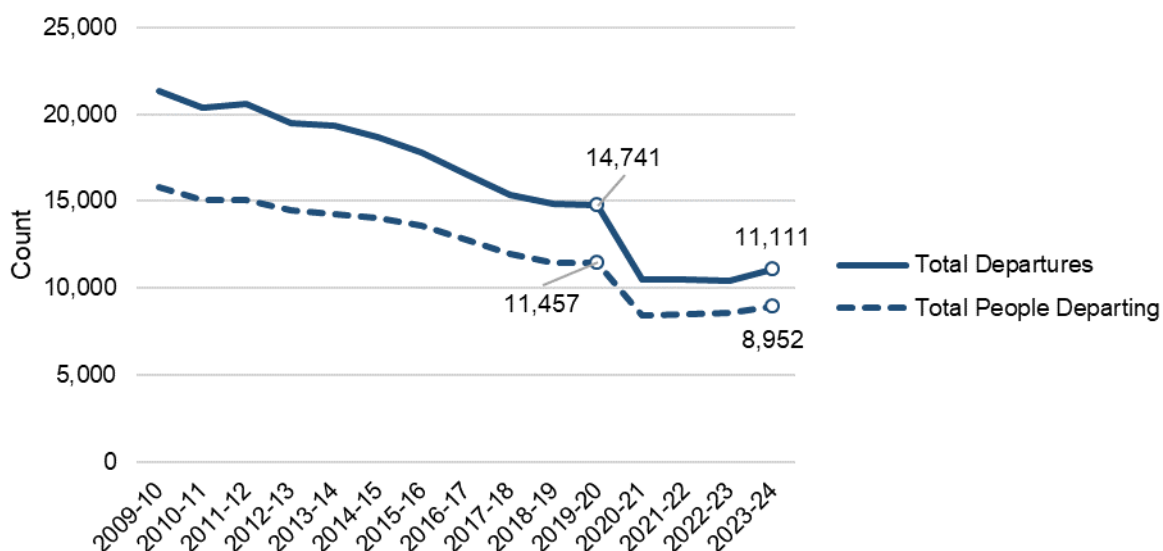
[[Supplementary Tables](#) C1, O2, O3 & O4]

Departures from custody increased by 6.5%<sup>xxxvi</sup> in 2023-24, from 10,437 in 2022-23 to 11,111. This compares with an 11% increase in Arrivals to prison, which has contributed to the rise in the prison population in the most recent year. This is the largest recorded increase in departures over this time series, however the volume of departures remains considerably below pre-pandemic levels.

An individual can enter and leave custody multiple times in a year. 8,952 individuals departed prison one or more times in 2023-24 – an increase of 4.5% from the previous year (see Figure 25), but still far below the 2019-20 level of 11,457.

**Figure 25: Departures have increased in 2023-24 but remain lower than pre-pandemic levels**

Number of departures, and unique individuals departing, 2009-10 to 2023-24



Around 46% of departures in 2023-24 were from remand and 53% were from the sentenced population. This is broadly the same proportion departing from a remand status as over the past two years (46%), and reflects a longer term pattern (43% in 2020-21 and 44% in 2019-20, 40-43% in preceding years). The number of remand departures increased by around 6% in 2023-24, from 4,836 in 2022-23 to 5,125.

Departures from sentenced status increased from the previous year at a similar rate (+7% from 5,520 to 5,891 in 2023-24).

There were 4,090 transitions<sup>xxxvii</sup> from remand to sentenced status in 2023-24 - around 5% more than in 2022-23 (3,888) but still 18% fewer than pre-pandemic (4,966 in 2019-20).

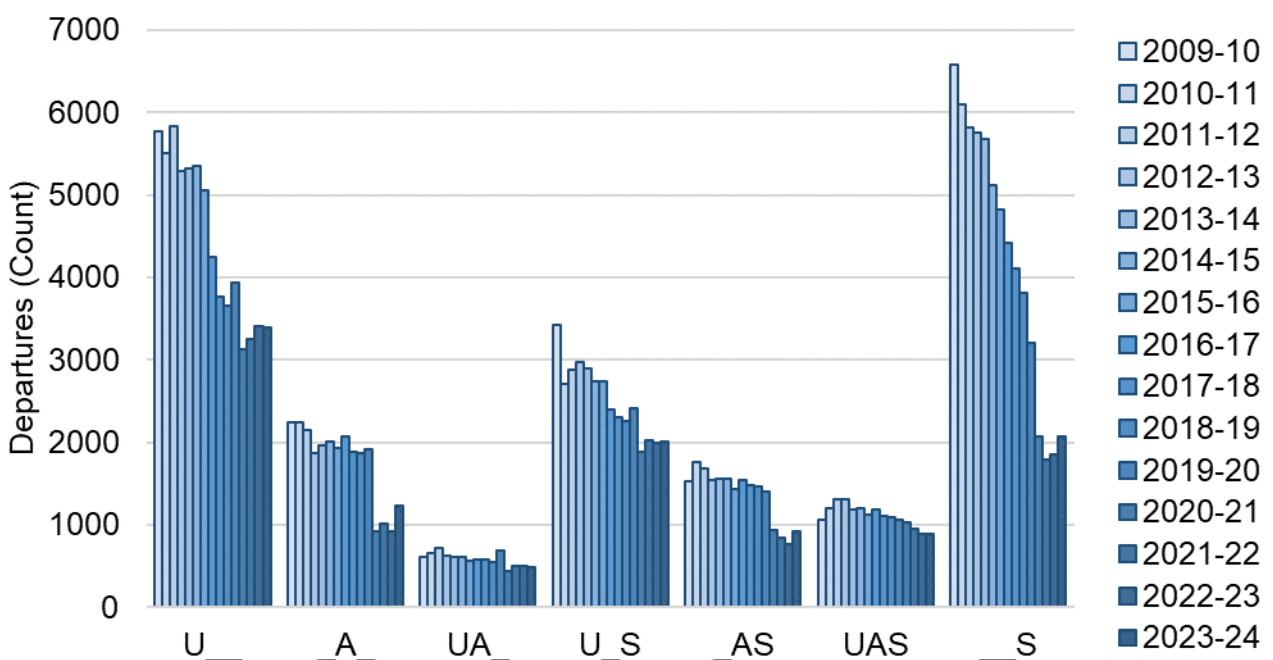
## Custodial journeys

[[Supplementary Tables C1 & O2](#)]

Figure 26 shows the number of departures by custodial journey type<sup>xxxviii</sup>. Journey types represent the progress through the legal status hierarchy<sup>xxxix</sup> in the course of an occupancy period, from untried (U), convicted awaiting sentence (A) to sentenced (S). Custodial journeys vary depending on legal status on arrival and whether or not the individual transitions between legal statuses before departing. Some individuals enter and leave custody having had the same legal status for the duration of their time served/ held. These are represented as U, A or S in the chart below. Others enter custody with one legal status and transition to another before leaving. For example, an individual may enter as untried, progress to convicted awaiting sentence and then subsequently sentenced. This particular journey type would be UAS in the chart below.

**Figure 26: The volume of departures by journey type in 2023-24 is lower than pre-pandemic levels, but there are increases in convicted awaiting sentence only journeys, convicted awaiting sentence to sentenced journeys and sentenced only journeys**

Departures by Journey Type, 2009-10 to 2023-24



While the total number of departures increased by 6% (from 10,437 to 11,110) between 2022-23 and 2023-24, this was entirely driven by increases in:

- convicted awaiting sentence-only “\_A\_” journeys (+33% from 924 to 1,231),
- “\_AS” journeys (+20% from 771 to 927 departures), and
- sentenced-only “\_\_S” journeys (+11% from 1,862 to 2,073).

The level of other journey types remained approximately the same as the preceding year.

When compared with 2019-20, levels remain lower than pre-pandemic across all journey types.

## **Time in custody**

[\[Supplementary Tables D2\]](#)

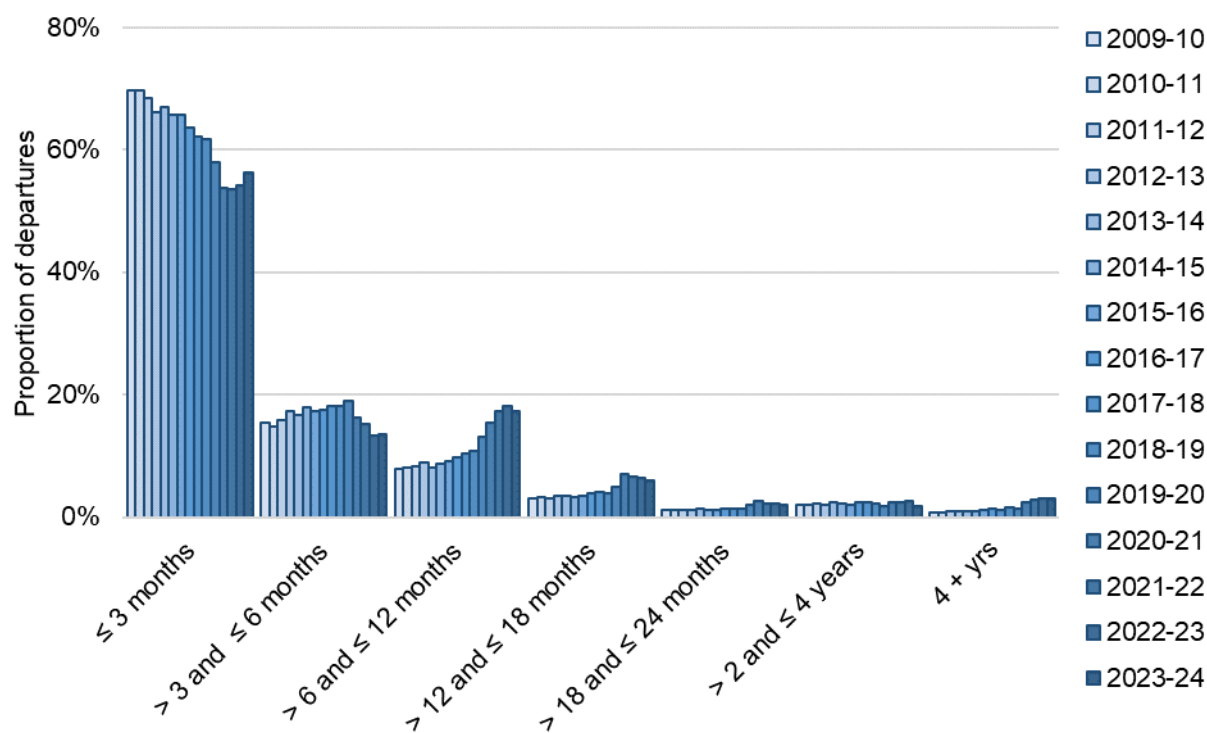
The mean total duration of an occupancy period<sup>xi</sup> was 222 days in 2023-24, down from 235 days in 2022-23.

The average time spent in custody has increased over the longer term, and this pattern has become more pronounced since the Covid pandemic. In 2009-10, the mean total duration was 122 days. This had increased to 169 in 2019-20<sup>xli</sup> before a sharp increase to 216 days in 2020-21 (+47 days). The latest decrease (-13 days from 2022-23) appears to have been driven by an increase in the proportion of departures occurring after a short stay of up to 6 months, as shown in Figure 27.

Prior to this there had been a long term decline in the proportion of short stays in custody. Continuous periods in custody of 6 months or less made up 85% of all occupancy periods ending in 2009-10 and 77% in 2019-20, but just 68% in 2022-23. In 2023-24 this has increased slightly to 70%.

**Figure 27: A small increase in the proportion of departures occurring after a short stay of up to 3 months in 2023-24**

Banded time in custody at departure, 2009-10 to 2023-24



### Time on remand

[[Supplementary Tables O2](#)]

Time on remand<sup>xlii</sup> can be measured when an individual departs custody without a sentencing warrant in that occupancy period, or when they transition from a remand status to the sentenced population for the first time<sup>xliii</sup> in an occupancy period.

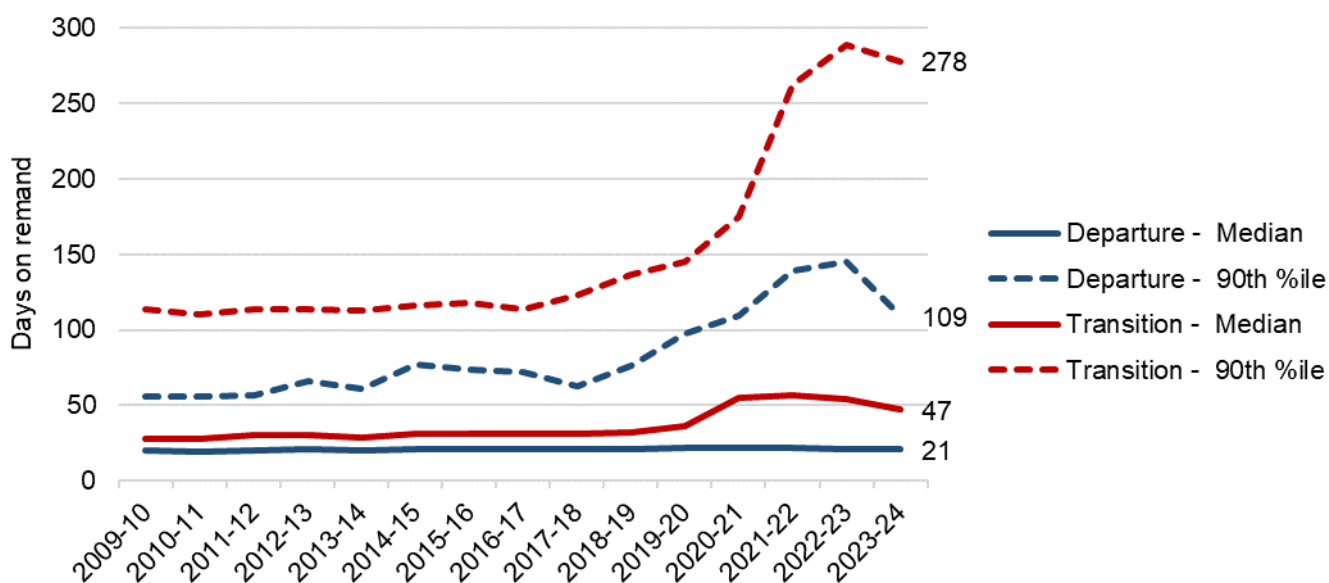
As shown in Figure 28, the median time taken for an individual to depart custody from remand has remained at a similar level since 2009-10. In 2023-24 the median number of days to departure from remand was 21 days. However, until last year the longest periods spent on remand had increased over time. In 2017-18, 90% of remand departures had occurred within 63 days. By 2022-23, the longest 10% of stays before departure from remand took 146 days or more. In 2023-24 this fell to 109 days before remand departure, although this remains substantially higher than pre-pandemic.

The time taken to transition from a remand status to the sentenced population is longer on average than time to depart from remand. The median number of days to transition was broadly stable from 2009-10 to 2017-18. In 2017-18 the median number of days to transition was 31, but this rose steeply in 2020-21 to 55. In 2022-23 it remained at a similar level at 54 days, but in 2023-24 this figure fell to 47 days.

As with departures, the longest periods to transition from remand to sentenced had been increasing over time. In 2019-20, 90% of transitions occurred within 145 days. By 2022-23 the longest 10% of stays before transition from remand took 289 days or more. In 2023-24 this fell slightly to 278 days.

**Figure 28: Time on remand for those who transition to serving a sentence, and the longest remand departure periods, fell in 2023-24 but remains considerably longer than a decade ago**

Days on remand by destination – transition to the sentenced population or departure to the community – median and 90<sup>th</sup> percentile days, 2009-10 to 2023-24



Remand-only journey types<sup>xliv</sup> of more than two weeks and up to five weeks increased in both number and proportion of all remand journeys to their highest levels since 2020-21. In 2023-24 there were 1,753 such departures, accounting for 34% of all remand-only journey departures.

Single day remand-only departures were at their highest level since 2016-17 at 472 and accounted for 9% of remand departures in 2023-24 – the highest recorded rate. In 2016-17 there were 507 such single day remand departures, or 7% of remand departures.

## Liberations

### Leaving Remand

[[Supplementary Tables](#) O4]

The overall volume of departures from remand increased by 6% between 2022-23 and 2023-24, from 4,836 to 5,125.

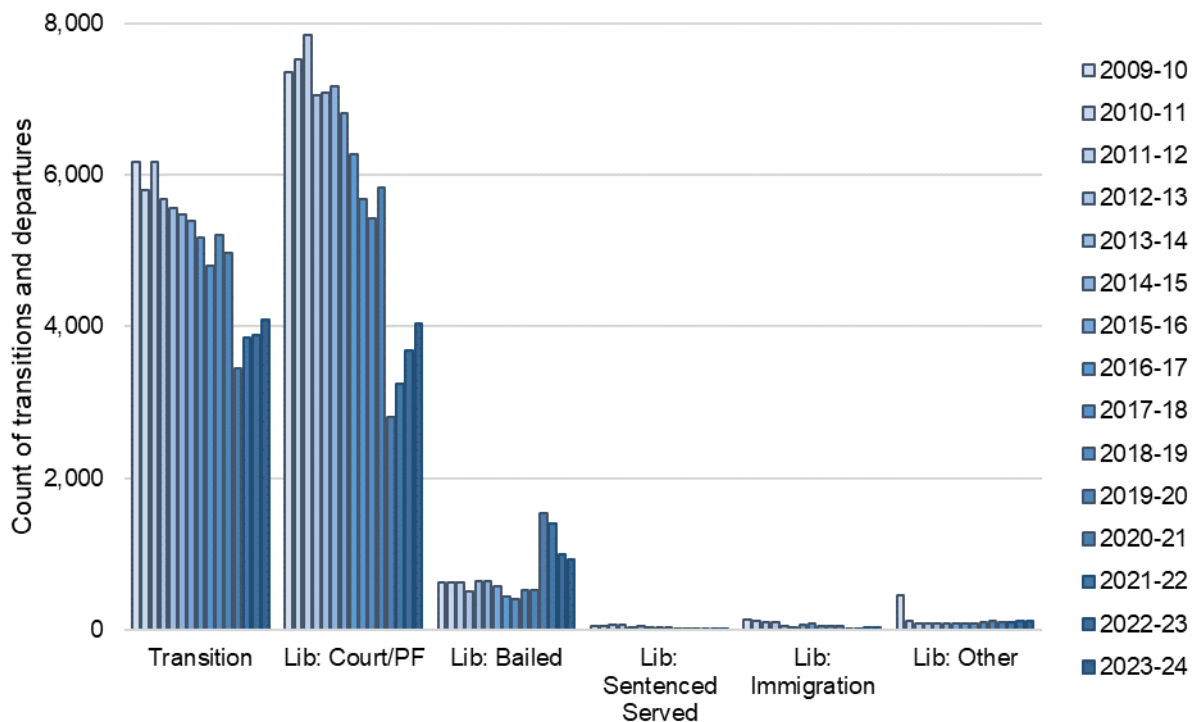
The number of those with court or procurator fiscal liberations increased 9%, from 3,683 in 2022-23 to 4,031 in 2023-24, and accounted for 79% of remand departures. This continues the growth trend from 2021-22, following a large

decrease in this liberation type (-52%) in the first pandemic year. In 2019-20, these liberations accounted for 89% of remand departures.

In 2019-20, 528 remand departures were liberated to bail, but in 2020-21 this increased almost threefold to 1,544 (Figure 29) before decreasing in 2022-23 to 999. In 2023-24 this decreased further to 933 but the volume remains higher than in pre-pandemic years.

**Figure 29: Transitions and in court liberations from remand increase in 2023-24, while liberations to bail decrease**

Number of transitions and departures from remand by liberation type, 2009-10 to 2023-24



The time to departure varies depending on the type of liberation. Figure 30 shows the median and 90<sup>th</sup> percentile days on remand by liberation type.

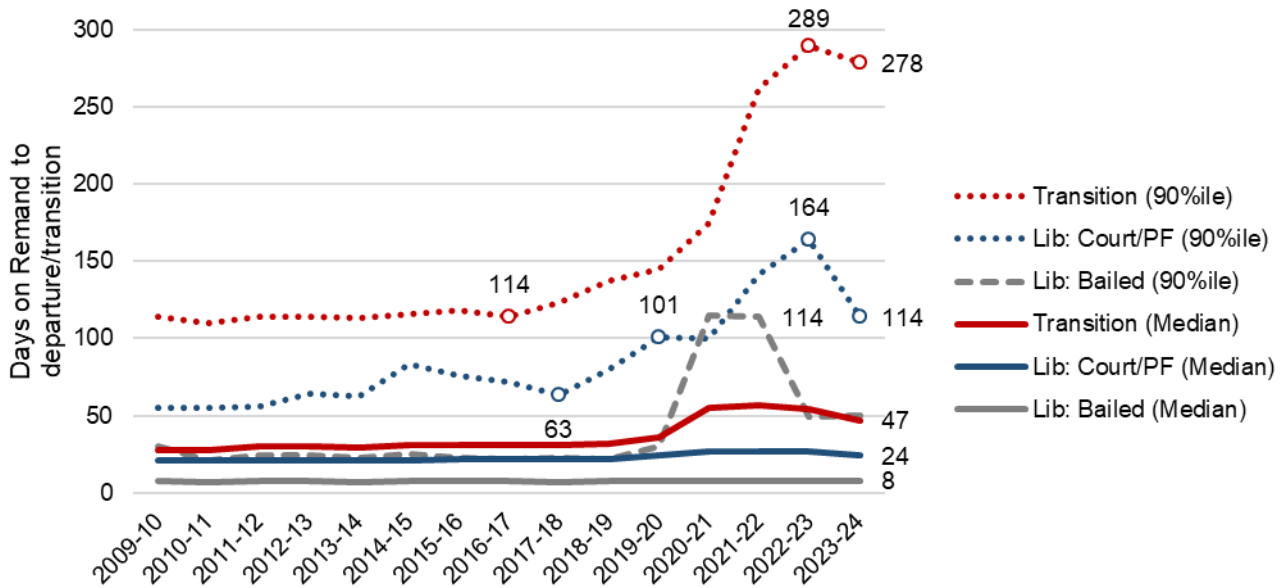
Median time to liberation from remand by the courts or procurator fiscal fell slightly from 27 days between 2020-21 and 2022-24 to 24 days in 2023-24. The 90<sup>th</sup> percentile also fell from a high of 164 days in 2022-23 to 114 days in 2023-24. This remains above the pre-pandemic level of 101 days.

Liberations to bail have fluctuated in recent years, with the median time to liberation staying constant between 2019-20 and 2023-24 at 8 days. However, 10% of those liberated to bail remained in custody for 114 days or more in 2021-22 and 115 days or more in 2020-21, compared with just 30 days or more in 2019-20. In 2022-23 this 90<sup>th</sup> percentile level fell back down to 49 days and in 2023-24 it was 50 days.

Days on remand until transition is described in the section Time on remand.

**Figure 30: Both the median and 90<sup>th</sup> percentile duration of remand before a Court liberation have fallen in 2023-24**

Days on remand for transitions to the sentenced population and departures by liberation type, median and 90<sup>th</sup> percentile, 2009-10 to 2023-24



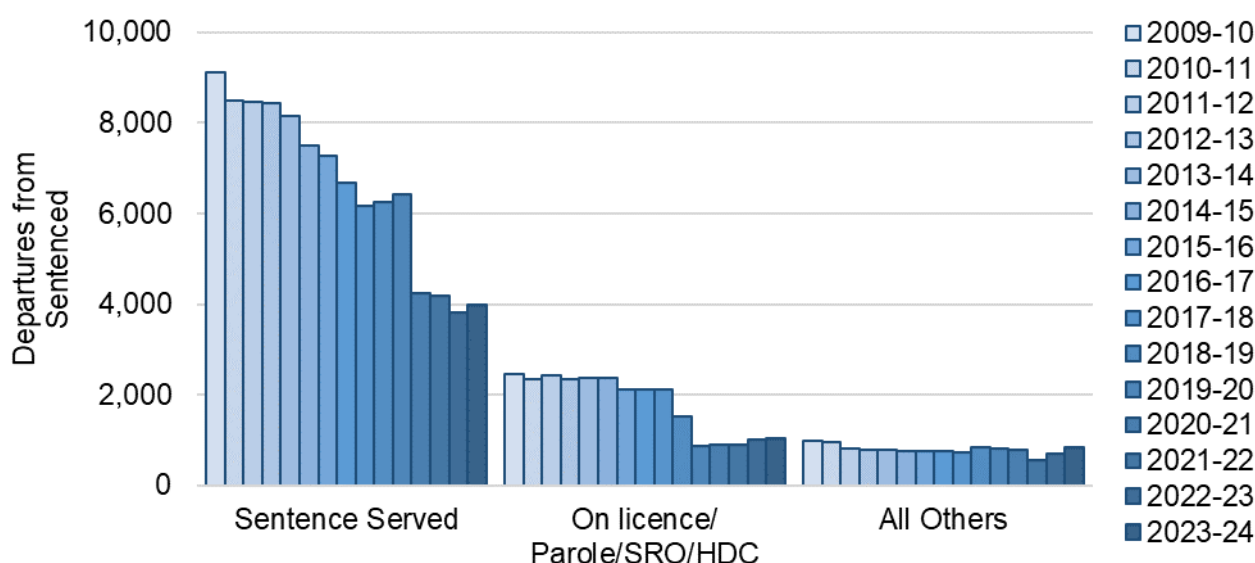
**Sentenced liberations**

[[Supplementary Tables](#) O4]

As discussed in the section Departures and transitions, the overall volume of sentenced departures increased by around 7% in 2023-24. This was reflected in a 7% increase in recorded liberations<sup>xiv</sup> from the sentenced population (from 5,520 in 2022-23 to 5,891 in 2023-24). Figure 31 below shows the breakdown by liberation type.

**Figure 31: All liberation types increased as departures from sentenced increased in 2023-24**

Number of departures from sentenced status by liberation type, 2009-10 to 2023-24



Liberations recorded as ‘sentence served’ rose by 4% in 2022-23, from 3,826 to 3,998. Liberations to conditional release (on licence, parole or home detention curfew) also increased by 3% from 1,006 in 2022-23 to 1,040 in 2023-24.

Liberations by the court or procurator fiscal increased from 300 to 326 over the same time period. There was an increase in liberations to bail, from 57 in 2022-23 to 63 in 2023-24. These liberation types, generally associated with remand prisoners, may indicate individuals moving from sentenced to remand prior to departure, as discussed in Legal status discrepancies.

**Statutory Throughcare Departures (NEW)**

[[Supplementary Tables](#) P2]

In this section we provide the number individuals departing from an occupancy period associated with a Supervised Release Order<sup>xlvi</sup> (SRO) or extended sentence<sup>xlvii</sup> flag, as shown in Figure 32.

Comparing these counts with the number of community commencements reported in Justice Social Work statistics<sup>xlviii</sup> provides reassurance that estimates in this release are in line with expected counts.

The number of individuals departing with extended sentence orders have fallen from a peak of 218 in 2013-14 (2.3% of sentenced departures). In 2023-24 this had decreased to 103 individuals departing (1.9% of sentenced departures).

Comparing these figures with the information provided by Justice Social Work statistics we see that the trends track each other closely, although there is some degree of variation between the two counts.

**Figure 32: Community Commencements of Extended and SRO sentences broadly align to individuals departing sentenced each year 2014-15 to 2023-24**

Comparing Justice Social Work (JSW) Statistics and Prison Population Statistics (SPPS) between 2014-15 and 2023-24



The number of individuals departing custody with a Supervised Release Order (SRO) peaked at 355 in 2016-17, when they comprised 3.7% of departures. The reduced number of departures overall in 2022-23 meant that the smaller number of such releases (302) accounted for a greater proportion of those entering the community (5.5%). The 297 individuals departing with an SRO flag in 2023-24 made up 5% of all people departing custody.

Comparing these figures with the number of community commencements each year, we observe a systematic over-estimate in the prison data. For more information see the Technical Manual<sup>xlix</sup>.

# Source Comparison

The cellWise data on which this publication is based is substantially different from other sources of information about the prison population – the preceding statistical publications from Scottish Government (up to 2013-14)<sup>i</sup>, the management information snapshots taken throughout the pandemic period published as monthly reports by Scottish Government<sup>ii</sup>, and the aggregate information produced by the Scottish Prison Service<sup>iii</sup>.

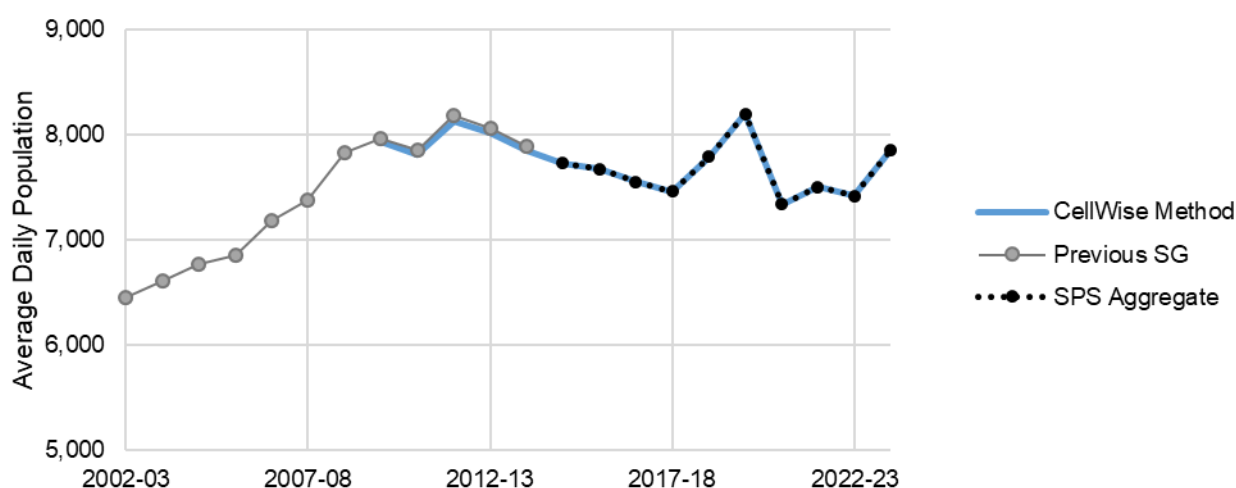
The major points of difference lie in the average distribution between legal statuses, and the inability in the cellWise data to determine overall sentence lengths. In spite of this, as shown in Figure 33, the estimate of the overall prison population are closely aligned across the three annual sources:

- across the 5 years where the previous Official Statistics overlap (2010-11 through 2015-16), the cellWise estimate of average daily population is slightly lower by between 0.4% and 0.6%
- across the 10 years where the SPS aggregation overlaps (2014-15 to 2023-24), the cellWise estimate of average daily population is within  $\pm 0.05\%$

This provides us with a very high level of confidence in using the cellWise data to describe the occupancy and characteristics of people in Scottish prisons.

**Figure 33: Comparison of sources for the overall prison population estimation show close alignment 2002-03 to 2023-24**

Comparing SPS aggregated population estimates with those produced by cellWise – the data source for this publication, 2002-03 to 2023-24



Further disaggregated population group changes are provided in Supplementary Table A2.

## Legal status discrepancies

Due to the lack of consistent information retained on PR2 about the end point of periods spent in prison serving a sentence, prisoners who return to the remand population immediately after a sentence is served continue to be counted as sentenced for the purpose of their on-going Occupancy Period<sup>liii</sup>. This aspect of the data construction is explained in further detail in the accompanying technical manual<sup>liv</sup>.

Based on the snapshots collected to monitor the prison population from the beginning of the pandemic, there were 656 such retrograde transitions (from sentenced to remand) in the course of 2020-21, growing to 936 in 2021-22, 1,274 in 2022-23 and 1,397 in 2023-24. In addition there were 125 transitions from CAS to Untried in 2020-21, growing to 168 in 2021-22, 224 in 2022-23 and 229 in 2023-24. Such transitions cannot be detected in the cellWise data construction.

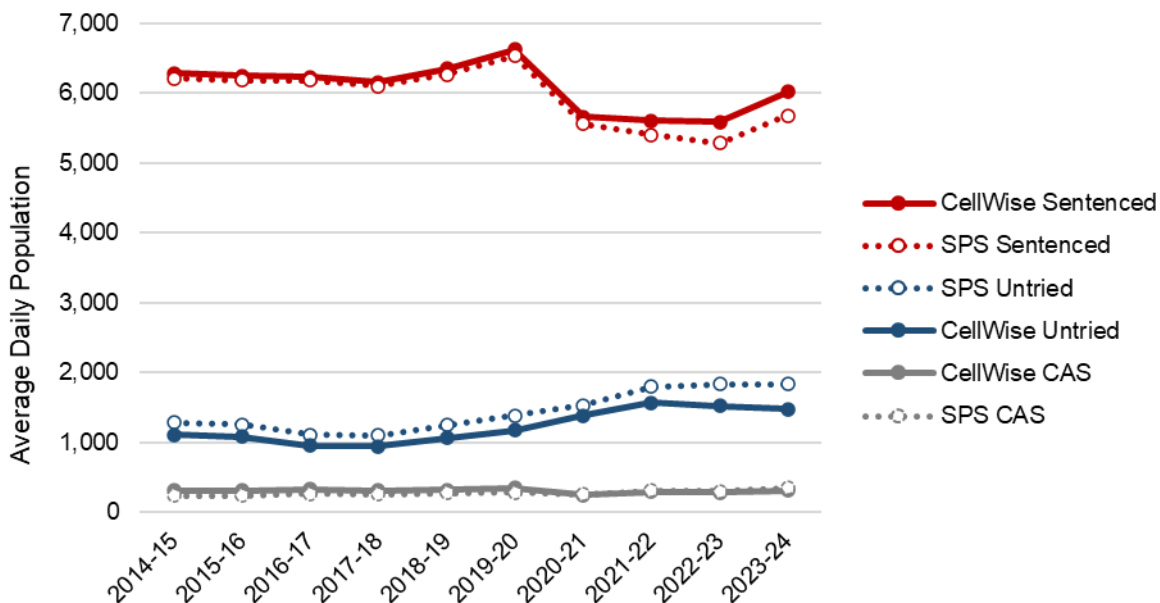
This leads to the following effects when comparing the cellWise and SPS aggregate estimates of legal status populations from 2020-21:

- A growing underestimate of the average daily Untried population from 13% (214) in 2020-21, to 19% (352) in 2023-24
- A growing underestimate in the average daily Convicted Awaiting Sentence population, which goes from 2 (1%) in 2020-21 to 29 (8%) in 2023-24
- A growing overestimate of the average daily Sentenced population, from around 100 (2%) in 2020-21 to around 340 (6%) in 2023-24

These differences over time are illustrated in Figure 34:

**Figure 34: Comparison of sources of population estimates by legal status**

Comparing SPS aggregated population estimates by legal status with those produced by cellWise – the data source for this publication, 2014-15 to 2023-24



## **Index offences**

The offences for which people are imprisoned listed throughout this report are index offences<sup>lv</sup>. People may be imprisoned for multiple offences in a single occupancy period. In such cases we identify the most “serious” offence by the only available metric – the length of associated sentence. Where no sentences have been passed, the index offence is the offence category with the longest associated sentence on average based on all sentencing warrants over the past three years of SPS warrant data.

## **Sentence length ambiguity**

Throughout this report the sentence length of prisoners is their “index” sentence length<sup>lvi</sup>. There is currently no conflicting published source on the sentence distribution of prisoners. However, live information drawn from the PR2 system can provide the *overall sentence length* for each individual person in prison when the snapshot is taken. CellWise cannot use this information, which is over-written on PR2 when it is amended or updated.

Information about sentence length drawn from the cellWise data will therefore always explicitly reference *Index Sentence length* – the length of the longest determinate sentence applied in the course of an Occupancy Period.

This information cannot be used to divide the population into “long-term” and “short-term prisoners” (those serving an *overall* sentence of less than 4 years). Live (or daily aggregated) information is needed for that population segmentation.

A comparison of index sentence length and overall sentence length is provided in the Technical Manual for 2013-14, the latest year when the previous Official Statistics publication and cellWise data were both available<sup>lvii</sup>.

## Context and supplementary information

Previous publications have provided a high level summary of the changes occurring in characteristics of the prison population. These included a reduction in the numbers of individuals spending time in custody year on year, but a growth in the daily prison population from 2017-18 that appeared to be driven by increases in the time served in custody.

This publication builds on the information provided in previous publication<sup>lviii</sup>. With that in mind, we re-iterate the explanation for the trends documented in previous releases as the key context in which the findings from this publication should be viewed<sup>lix</sup>:

“The changes described [in this publication] may reflect the multitude of legislative and policy changes implemented across the wider criminal justice system in recent years. The data presented here cannot attest to the impact of these on their own, but the context is important to consider in interpreting the patterns above.

“For example, in terms of sentencing, the presumption against short-term prison sentences was introduced in 2011, and extended to include custodial sentences of 12 months or less in 2019, with the aim of reducing ineffective use of custody and encouraging community based sentences addressing offending and rehabilitation. Changes in sentencing practices over time are observed in the Criminal Proceedings in Scotland 2018-19 report<sup>lx</sup>, with a steady increase in custodial sentences of more than one year.

“Changes to release arrangements can impact the prison population. Automatic early release for longer term prisoners ended in 2015 and use of home detention curfew for short-term prisoners<sup>lxi</sup> was substantially reduced in 2018. Audit Scotland have also highlighted the stretching of financial resources and staff due to rising prisoner numbers as adversely affecting re-offending/rehabilitation programme completion and preventing prisoners from qualifying for release on parole.<sup>lxii</sup>

“Scottish Government Justice Analytical Services provide ongoing monitoring and modelling of change within the justice system. Recent analysis<sup>lxiii</sup> suggests that the above factors, in combination with historical improvements in clear-up and conviction rates, have impacted on the size and nature of the prison population.

“However, modelling change also suggests that shifts in [the prison] populations may reflect changes in the nature of offending coming to the attention of justice agencies, whether through shifting social norms and values and/or direct changes to legislation on criminal offences. The [previous] Criminal Proceedings in Scotland 2018-19 release points to substantial rises in convictions for sexual offences (including rape and attempted rape) where the imposition of custodial sentences is highly likely<sup>lxiv</sup>.

“Compliance with public health measures during the pandemic influenced operations across the criminal justice system. The Lord Advocate issued revised guidelines on the use of police custody, and the courts had to close for extended

periods or operate at reduced capacity. Prison establishments had to ensure sufficient space to allow prisoners to observe public health measures.

“The impact of justice system responses to public health measures in 2020-21 included: a decreased volume of custody cases reported to the Crown Office and Procurator Fiscal Service, and an increased volume of undertakings reports<sup>lxv</sup>; a reduced likelihood of an accused being remanded<sup>lxvi</sup>; a reduced volume of concluded cases in courts, with subsequent reduction in custodial sentences issued *and* growth in the trial backlog<sup>lxvii</sup>; and an agreement in the initial stages of the pandemic response to early release of eligible short-term sentenced prisoners<sup>lxviii</sup>. Combined, these shifts impacted both the in-flows *to* custody and the out-flows *from* custody.

“Whilst it is not yet possible to isolate the impact of the pandemic on the data, it is reasonable to conclude that the latest data is predominantly a reflection of the impact of the pandemic across the justice system, and should not be interpreted as indicative of longer-term trends.”

## **Other sources of information on the Scottish prison population**

The Scottish Government produces a range of statistics on the criminal justice system. Those referenced in this publication include information about recorded crime rates (<https://www.gov.scot/collections/recorded-crime-in-scotland/>) and criminal proceedings statistics (<https://www.gov.scot/collections/criminal-proceedings-in-scotland/>)

On the 30<sup>th</sup> August 2023 the Scottish Government published a review of deaths in custody over the ten year period to 2021-22. This report uses the previous edition of these Scottish Prison Population Statistics as a basis for population rate calculations. While some values have changed marginally from the previous edition, the results and their associated conclusion remain valid. Deaths in Prison Custody, 2012-2022 can be found on the Scottish Government website at <https://www.gov.scot/publications/deaths-prison-custody-scotland-2012-2022/>

From June 2020 until April 2022, Scottish Government Justice Analytical Services published a monthly data report with the latest available information from across the justice system<sup>lxix</sup>. This includes information about monthly populations and about the alleged offences of people arriving on remand. These data are not directly comparable with the statistics presented in this report, as they are derived from collected daily snapshots rather than by the cellWise data construction. Furthermore, they are based on live information and have not been passed through the quality assurance applied to cellWise statistics.

From May 2022 this monthly information on prison populations was integrated into the Justice Analytical Services Monthly data report<sup>lxx</sup> and expanded to include statistics on time on remand to date for the remand population on the first of each month.

Justice Analytical Services has produced short-term projections of the prison population using ‘microsimulation’ scenario modelling which simulates prison

arrivals and departures and estimates the number of individuals in prison on a particular date in the future. These projections may be found at <https://www.gov.scot/collections/scottish-prison-population-statistics/#post-covidpandemicshorttermprisonprojections>

Information comparing prison populations across Europe is compiled by the Council of Europe each year in the SPACE-I collection<sup>lxxi</sup>. The collated figures are drawn from single day snapshots (typically January 31<sup>st</sup> each year), or totals over the course of a calendar year. They are therefore related to, but not directly comparable with, cellWise data.

The Scottish Prison Service (SPS) publish a range of statistical information and research reports about the prison population on their website. Justice Analytical Services is not responsible for the content of these reports.

The latest SPS Prisoner Survey was conducted in 2019 and is available at [https://www.sps.gov.uk/sites/default/files/2024-02/17thPrisonSurvey\\_2019\\_Research.pdf](https://www.sps.gov.uk/sites/default/files/2024-02/17thPrisonSurvey_2019_Research.pdf)

Weekly population snapshots and annual averages of the prison population broken down by custody type, gender and age, as well as the population on home detention curfew by gender can be found on the SPS website: <https://www.sps.gov.uk/about-us/transparency/data-research-and-evidence> .

The Scottish Prison Service publishes quarterly public information reports providing information across a number of prisoner and staff metrics. The quarterly reports covering the period of this annual report are available from the SPS website: [https://www.sps.gov.uk/about-us/transparency/publications?combine=&field\\_category\\_target\\_id=73](https://www.sps.gov.uk/about-us/transparency/publications?combine=&field_category_target_id=73)

## **International Comparisons**

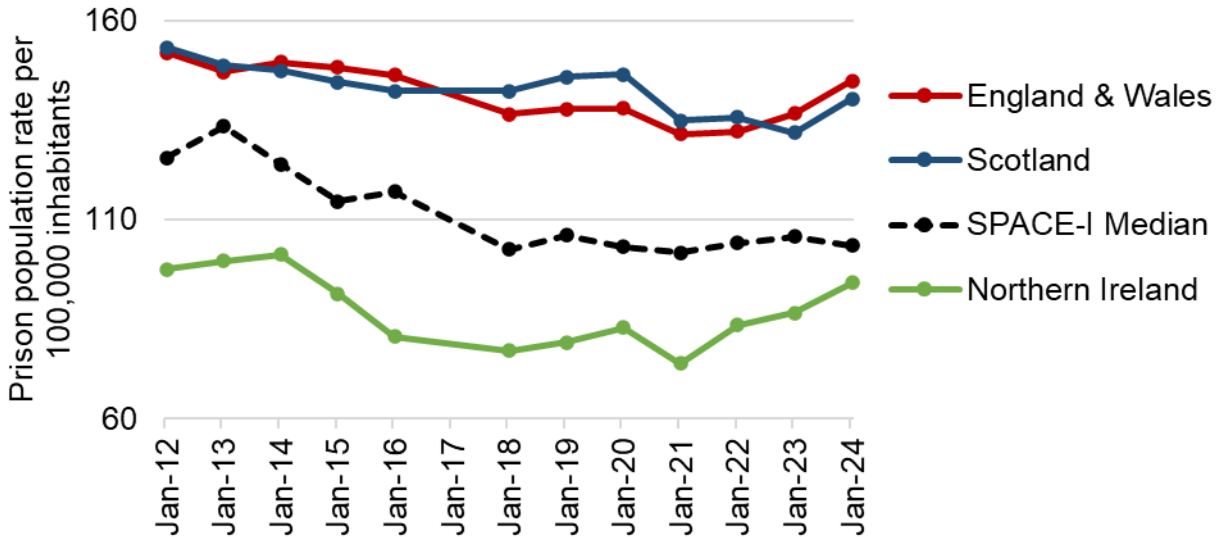
In 2024, a Council of Europe SPACE-I collection occurred on the 1<sup>st</sup> January and shows that Scotland continued to have one of the highest prison population rates in western Europe<sup>lxxii</sup>. On that date there were 140.5 prisoners per 100,000 inhabitants in Scotland.

On this occasion, while in Northern Ireland it remained far lower at 94.2 per 100,000 inhabitants, the prison population rate in England & Wales was slightly higher than that in Scotland at 145.0 per 100,000. Figure 35 shows that this had not been the case since 2016, and that Scotland and England & Wales have levels consistently higher than the median rate among Council of Europe contributors.

Across the 47 countries in the SPACE-I return, England & Wales and Scotland had the 13<sup>th</sup> and 14<sup>th</sup> highest prison population rates respectively.

**Figure 35: UK incarceration rates rose to January 2024 while the median rate in Council of Europe countries fell**

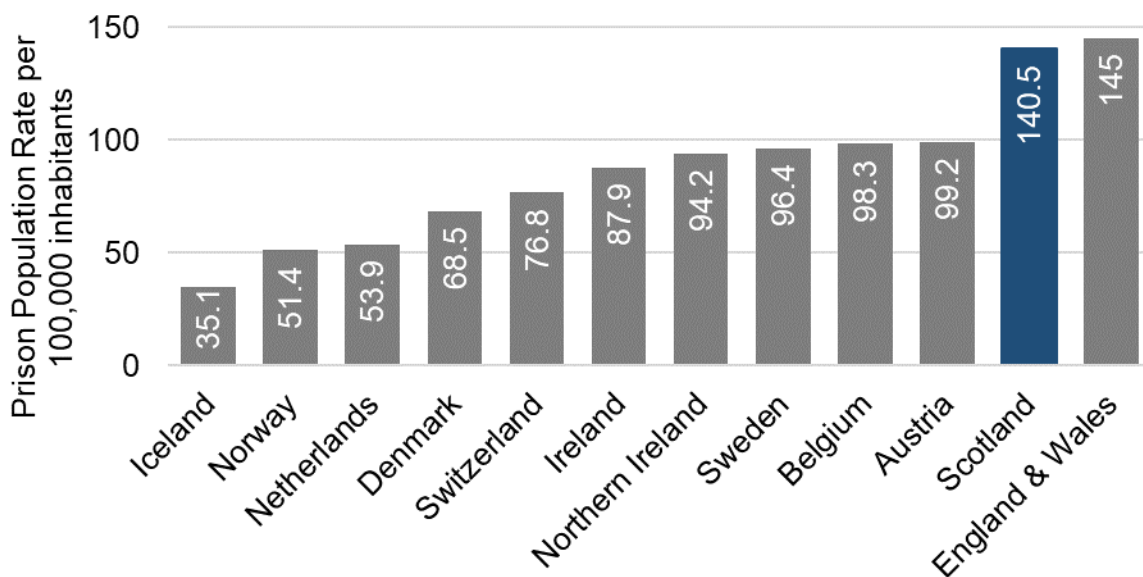
Prison population rates per 100,000 inhabitants in UK nations from 2012 through 2024, SPACE-I<sup>lxxiii</sup>



The Scottish Government research papers “Building a New Scotland” use a set of 10 comparator countries<sup>lxxiv</sup>. The prison population rates for those countries, Scotland, England & Wales and Northern Ireland are provided in Figure 36.

**Figure 36: England & Wales and Scotland have a far higher incarceration rate than their neighbours**

Prison population rates per 100,000 inhabitants in comparable European countries on 1<sup>st</sup> January 2024, SPACE-I<sup>lxxv</sup>



# Data and Methodology

This publication was produced by Scottish Government statisticians using administrative data from the Scottish Prison Service (SPS) management information system PR2. These data are collected by prison officers and staff for operational intelligence and logistical support.

It is important to note that the prison population is not static; individuals move in and out of the population every day. PR2 is a live system, updating constantly to capture changes to the state of the prison population. An extract of data from this system reports on the population at the moment in time the extract is drawn. Like many other operational databases, it was not designed to retain detailed historical data, or to provide retrospective information to assess how the prison population has changed over time.

Up until 2014, the Scottish Government held and reported on data compiled by combining and linking daily extracts from PR2. In addition, a number of the tables and figures in those previous reports were based on single-day ‘snapshots’ rather than the data compiled throughout the year.

Due to technological changes in 2014, it is no longer possible to produce these data. The dataset used in this publication (and all other publications produced from 2019-20 onwards) has been created using the information that is retained about the periods when prisoners occupied specific cells. Hence the population spine underlying this publication is termed “cellWise”, or the cellWise data. More detail on how these data are constructed is provided in the accompanying Technical Manual<sup>lxxvi</sup>.

The construction of the cellWise data is fundamentally different, both to the previous data design and to the aggregation produced by SPS in the interim. It has therefore not been possible to align these results exactly with publications pre 2019-20. Source Comparison shows that trends and approximate levels are sufficiently aligned for meaningful interpretation of high level prison population trends. Where uncertainties do arise, these will be highlighted throughout this report, and are also listed in the Source Comparison. The measurements throughout this publication therefore represent estimates based on the data as constructed.

The Scottish Government is seeking views on its statistical products. To take part in this consultation, please complete the [Scottish Government official statistics feedback survey](#).

## Technical Manual

Information about the derivation of the cellWise analytical dataset and the various measurements and factors used in this report is provided in a stand-alone technical manual, available from the Scottish Government website<sup>lxxvii</sup>.

## Supplementary Tables

The following supplementary tables are available alongside this publication in Excel format<sup>lxviii</sup>

**Table 1: Supplementary Tables**

| <b>Table</b> | <b>Title</b>   |
|--------------|--|
| A1           | Average Daily Populations by Source  |
| A2           | Women and Young People in Custody by Source  |
| B1           | Establishment Demographics   |
| B2           | Populations by Age and Gender  |
| B3           | Ethnicity  |
| B4           | Armed Services   |
| B5           | Disability   |
| B6           | Sexual Orientation   |
| B7           | Marital Status   |
| B8           | Nationality  |
| C1           | Arrivals and Departures per Person   |
| C2           | Arrivals by Local Authority  |
| C3           | Arrivals by Deprivation  |
| C4           | Arrivals Address Types   |
| D1           | Departures by Liberation Type  |
| D2           | Departures by Time Served  |
| D3           | Time Served by Age   |
| E1           | People in prison; Full- & Part-year Individuals  |
| E2           | Full- & Part-year Demographics   |
| M1           | Population Legal Statuses  |
| M2           | Population Index Offences  |
| M3           | Population Index Sentences   |
| M4           | Population Extended Sentences and Supervised Release Orders  |
| O1           | Arrivals   |
| O2           | Remand Time Statistics   |
| O3           | Remand Departure / Transition Offences   |
| O4           | Departures and Liberation Types  |
| O5           | Arrivals and Transitions to the Sentenced Population (inc. Ext/SROs)   |
| O6           | Arrivals by Offence Group  |
| P1           | Beginning sentences with Extended or Supervised Release Order components   |
| P2           | Individuals with Extended or Supervised Release Order Components Departing from a period serving a sentence with Extended or |
| P3           | Supervised Release Order components  |
| X1           | Monthly and Quarterly Prison Populations   |

## Interactive Analytical Tool

An interactive tool has been produced alongside this report to allow users access to a bespoke analysis.

<https://scotland.shinyapps.io/sg-prison-population-statistics/>

A worked example using this tool to explore statistics on time on remand was published in the September 2022 edition of the JAS Monthly Data Report<sup>lxxix</sup>.

# Tell us what you think

We are always interested to hear from our users about how our statistics are used, and how they can be improved.

## Enquiries

For enquiries about this publication please contact:

Sarah MacQueen  
Justice Analytical Services  
E-mail: [Justice\\_Analysts@gov.scot](mailto:Justice_Analysts@gov.scot)

For general enquiries about Scottish Government statistics please contact:

Office of the Chief Statistician  
e-mail: [statistics.enquiries@gov.scot](mailto:statistics.enquiries@gov.scot)

More information about Scottish Government statistics is available on the [Scottish Government website](#).

## Join our mailing list

If you would like to receive notifications about statistical publications, or find out about consultations on our statistics please join the [ScotStat mailing list](#).

## Future publications

Details of future publications can be found on our [forthcoming publications](#) page.

- 
- <sup>i</sup> Technical Manual: Legal status hierarchy: <https://www.gov.scot/publications/scottish-prison-population-statistics/pages/cellwise-data-construction/#Legal%20status%20heirarchy>
- <sup>ii</sup> Scottish Sentencing Council, Custodial Sentences: <https://www.scottishsentencingcouncil.org.uk/sentencing-information/custodial-sentences>
- <sup>iii</sup> Technical Manual: Statutory Throughcare flags, <https://www.gov.scot/publications/scottish-prison-population-statistics/pages/cellwise-data-construction/#Statutory%20Throughcare%20flags>
- <sup>iv</sup> Scottish Government, Justice Social Work Statistics: <https://www.gov.scot/collections/criminal-justice-social-work/>
- <sup>v</sup> Office for Statistics Regulation: Assessment of compliance with the Code of Practice for Statistics, <https://osr.statisticsauthority.gov.uk/publication/assessment-of-compliance-with-the-code-of-practice-for-statistics-scottish-prison-population-statistics/>
- <sup>vi</sup> Office for Statistics Regulation: National Statistics designation for the Scottish prison population statistics, <https://osr.statisticsauthority.gov.uk/correspondence/ed-humpherson-to-alastair-mcalpine-national-statistics-designation-for-the-scottish-prison-population-statistics/>
- <sup>vii</sup> Technical Manual: Average daily population, <https://www.gov.scot/publications/scottish-prison-population-statistics/pages/analytical-factors-and-measurements/#Average%20daily%20population>
- <sup>viii</sup> Scottish prison Population Statistics 2022-23, "COVID impacts on the prison population": [https://www.gov.scot/publications/scottish-prison-population-statistics-2022-23/pages/average-daily-populations/#s1\\_1](https://www.gov.scot/publications/scottish-prison-population-statistics-2022-23/pages/average-daily-populations/#s1_1)
- <sup>ix</sup> Technical Manual: Legal status, <https://www.gov.scot/publications/scottish-prison-population-statistics/pages/analytical-factors-and-measurements/#Legal%20status>
- <sup>x</sup> Technical Manual: Index sentence, <https://www.gov.scot/publications/scottish-prison-population-statistics/pages/analytical-factors-and-measurements/#Index%20sentence>
- <sup>xi</sup> <https://scotland.shinyapps.io/sq-prison-population-statistics/>
- <sup>xii</sup> Technical Manual: Supervised Release Order, <https://www.gov.scot/publications/scottish-prison-population-statistics/pages/analytical-factors-and-measurements/#factor-SRO>
- <sup>xiii</sup> Technical Manual: Extended Sentence, <https://www.gov.scot/publications/scottish-prison-population-statistics/pages/analytical-factors-and-measurements/#factor-extended>
- <sup>xiv</sup> Technical Manual: Index offence, <https://www.gov.scot/publications/scottish-prison-population-statistics/pages/analytical-factors-and-measurements/#Index%20offence>
- <sup>xv</sup> Technical Manual: Index sentence, <https://www.gov.scot/publications/scottish-prison-population-statistics/pages/analytical-factors-and-measurements/#Index%20sentence>
- <sup>xvi</sup> Technical Manual: Index sentence, <https://www.gov.scot/publications/scottish-prison-population-statistics/pages/analytical-factors-and-measurements/#Index%20sentence>
- <sup>xvii</sup> Technical Manual: Index offence, <https://www.gov.scot/publications/scottish-prison-population-statistics/pages/analytical-factors-and-measurements/#Index%20offence>
- <sup>xviii</sup> Domestic Abuse (Scotland) Act 2018, <https://www.legislation.gov.uk/asp/2018/5/contents/enacted>
- <sup>xix</sup> Scottish Prison Population Statistics: Legal Status, 2019-20. Section 3.1.2 <https://www.gov.scot/publications/scottish-prison-population-statistics-legal-status-2019-20/pages/6/>
- <sup>xx</sup> Technical Manual: Legal Status, <https://www.gov.scot/publications/scottish-prison-population-statistics/pages/analytical-factors-and-measurements/#Legal%20status>
- <sup>xxi</sup> Technical Manual: Index Offence Derivation: <https://www.gov.scot/publications/scottish-prison-population-statistics/pages/cellwise-data-construction/#index-offence-derivation>
- <sup>xxii</sup> Technical Manual: Index Offence group, <https://www.gov.scot/publications/scottish-prison-population-statistics/pages/analytical-factors-and-measurements/#Index%20offence%20group>
- <sup>xxiii</sup> Technical Manual: Index offence, <https://www.gov.scot/publications/scottish-prison-population-statistics/pages/analytical-factors-and-measurements/#Index%20offence>
- <sup>xxiv</sup> <https://scotland.shinyapps.io/sq-prison-population-statistics/>
- <sup>xxv</sup> Technical Manual: Individuals, <https://www.gov.scot/publications/scottish-prison-population-statistics/pages/analytical-factors-and-measurements/#Individuals>
- <sup>xxvi</sup> Technical Manual: Legal Status, <https://www.gov.scot/publications/scottish-prison-population-statistics/pages/analytical-factors-and-measurements/#Legal%20status>
- <sup>xxvii</sup> Scottish prison population: statistics 2019 to 2020, Section 2.1 <https://www.gov.scot/publications/scottish-prison-population-statistics-2019-20/pages/4/>
- <sup>xxviii</sup> Technical Manual: Ethnicity, <https://www.gov.scot/publications/scottish-prison-population-statistics/pages/analytical-factors-and-measurements/#Ethnicity>

- 
- <sup>xxix</sup> More information about the derivation of these rates is provided in the Technical Manual: Comparator population rates, <https://www.gov.scot/publications/scottish-prison-population-statistics/pages/analytical-factors-and-measurements/#Comparator%20population%20rates>
- <sup>xxx</sup> Technical Manual: Nationality, <https://www.gov.scot/publications/scottish-prison-population-statistics/pages/analytical-factors-and-measurements/#Nationality>
- <sup>xxxi</sup> Technical Manual: Arrival, <https://www.gov.scot/publications/scottish-prison-population-statistics/pages/analytical-factors-and-measurements/#Arrival>
- <sup>xxxii</sup> More information about the derivation of these rates is provided in the Technical Manual: Comparator population rates, <https://www.gov.scot/publications/scottish-prison-population-statistics/pages/analytical-factors-and-measurements/#Comparator%20population%20rates>
- <sup>xxxiii</sup> Scottish prison population statistics 2019-20, Section 3.3, <https://www.gov.scot/publications/scottish-prison-population-statistics-2019-20/pages/5/>
- <sup>xxxiv</sup> Technical Manual: No fixed abode, <https://www.gov.scot/publications/scottish-prison-population-statistics/pages/analytical-factors-and-measurements/#Of%20no%20fixed%20abode>
- <sup>xxxv</sup> For more information see the Technical Manual: Legal Status Hierarchy, <https://www.gov.scot/publications/scottish-prison-population-statistics/pages/cellwise-data-construction/#Legal%20status%20heirarchy>  
Section Legal status discrepancies provides details of the reverse transitions in 2023-24.
- <sup>xxxvi</sup> Technical Manual: Departure, <https://www.gov.scot/publications/scottish-prison-population-statistics/pages/analytical-factors-and-measurements/#Departure>
- <sup>xxxvii</sup> Technical Manual: Status transitions, <https://www.gov.scot/publications/scottish-prison-population-statistics/pages/analytical-factors-and-measurements/#Status%20transition>
- <sup>xxxviii</sup> Technical Manual: Journey type, <https://www.gov.scot/publications/scottish-prison-population-statistics/pages/analytical-factors-and-measurements/#Journey%20type>
- <sup>xxxix</sup> Technical Manual: Legal status hierarchy, <https://www.gov.scot/publications/scottish-prison-population-statistics/pages/cellwise-data-construction/#Legal%20status%20heirarchy>
- <sup>xl</sup> Technical Manual: Occupancy Period, <https://www.gov.scot/publications/scottish-prison-population-statistics/pages/cellwise-data-construction/#Occupancy%20period>
- <sup>xli</sup> Technical Manual: Time to departure, <https://www.gov.scot/publications/scottish-prison-population-statistics/pages/analytical-factors-and-measurements/#Time%20to%20Departure>
- <sup>xlii</sup> Technical Manual: Time on remand, <https://www.gov.scot/publications/scottish-prison-population-statistics/pages/analytical-factors-and-measurements/#Time%20on%20remand>
- <sup>xliii</sup> Technical Manual: Legal status hierarchy, <https://www.gov.scot/publications/scottish-prison-population-statistics/pages/cellwise-data-construction/#Legal%20status%20heirarchy>
- <sup>xliv</sup> Technical Manual: Journey type, <https://www.gov.scot/publications/scottish-prison-population-statistics/pages/analytical-factors-and-measurements/#Journey%20type>
- <sup>xlv</sup> Technical Manual: Liberation type, <https://www.gov.scot/publications/scottish-prison-population-statistics/pages/analytical-factors-and-measurements/#Liberation%20type>
- <sup>xlvi</sup> Technical Manual: Supervised Release Order, <https://www.gov.scot/publications/scottish-prison-population-statistics/pages/analytical-factors-and-measurements/#factor-SRO>
- <sup>xlvii</sup> Technical Manual: Extended Sentence, <https://www.gov.scot/publications/scottish-prison-population-statistics/pages/analytical-factors-and-measurements/#factor-extended>
- <sup>xlviii</sup> Justice Social Work Statistics in Scotland: 2023-24 – Part 1 (Table 10), <https://www.gov.scot/publications/justice-social-work-statistics-scotland-2023-24-part-1/documents/>
- <sup>xlix</sup> Technical Manual: Statutory Throughcare Flags, <https://www.gov.scot/publications/scottish-prison-population-statistics/pages/cellwise-data-construction/#Statutory%20throughcare>
- <sup>l</sup> Historic publications are still available on the Scottish Government website: <https://www.gov.scot/collections/scottish-prison-population-statistics/>
- <sup>li</sup> Monthly reports from June 2020 to March 2022: <https://www.gov.scot/collections/coronavirus-covid-19-justice-analytical-services-data-report/>  
From April 2022 onwards: <https://www.gov.scot/collections/justice-analytical-services-safer-communities-and-justice-statistics-monthly-reports/>
- <sup>lii</sup> Annual aggregates and weekly snapshot information: <https://www.sps.gov.uk/Corporate/Information/SPSPopulation.aspx>
- <sup>liii</sup> Technical Manual: Occupancy Period, <https://www.gov.scot/publications/scottish-prison-population-statistics/pages/cellwise-data-construction/#Occupancy%20period>
- <sup>liiv</sup> Technical Manual: Legal Status Hierarchy, <https://www.gov.scot/publications/scottish-prison-population-statistics/pages/cellwise-data-construction/#Legal%20status%20heirarchy>

- 
- lv Technical Manual: Index Offence Derivation, <https://www.gov.scot/publications/scottish-prison-population-statistics/pages/cellwise-data-construction/#index-offence-derivation>
- lvi Technical Manual: Index Sentence derivation, <https://www.gov.scot/publications/scottish-prison-population-statistics/pages/cellwise-data-construction/#index-sentence-derivation>
- lvii Technical Manual: Index Sentence derivation, <https://www.gov.scot/publications/scottish-prison-population-statistics/pages/cellwise-data-construction/#index-sentence-derivation>
- lviii Scottish Prison Population statistics collection, <https://www.gov.scot/collections/scottish-prison-population-statistics/>
- lix Scottish prison population: statistics 2019 to 2020, Section 5.1 <https://www.gov.scot/publications/scottish-prison-population-statistics-2019-20/>
- lx Criminal proceedings in Scotland: 2018-2019, <https://www.gov.scot/publications/criminal-proceedings-scotland-2018-19/>
- lxi Defined as those serving a sentence of less than 4 years. More information on HDC is available on the SPS website: <https://www.sps.gov.uk/Corporate/Information/HomeDetentionCurfew.aspx>
- lxii Audit Scotland (2019) [https://www.audit-scotland.gov.uk/uploads/docs/report/2019/s22\\_190912\\_sps.pdf](https://www.audit-scotland.gov.uk/uploads/docs/report/2019/s22_190912_sps.pdf)
- lxiii See Conlong (2019), available in addendum here: [https://www.parliament.scot/S5\\_Public\\_Audit/General%20Documents/SG\\_SPS\\_20191216.pdf](https://www.parliament.scot/S5_Public_Audit/General%20Documents/SG_SPS_20191216.pdf)
- lxiv See also Recorded Crime in Scotland 2020-21 for further context: <https://www.gov.scot/publications/criminal-proceedings-scotland-2020-21/>
- lxv Coronavirus (COVID-19): Justice Analytical Services data report, <https://www.gov.scot/collections/coronavirus-covid-19-justice-analytical-services-data-report/>
- lxvi Sheriff Courts - remand and bail outcomes: occasional paper, <https://www.gov.scot/publications/occasional-paper-remand-bail-outcomes-first-bail-decision-points-sheriff-courts/>
- lxvii Coronavirus (COVID-19): Justice Analytical Services data report, <https://www.gov.scot/collections/coronavirus-covid-19-justice-analytical-services-data-report/>, and Sheriff Courts - remand and bail outcomes: occasional paper, <https://www.gov.scot/publications/occasional-paper-remand-bail-outcomes-first-bail-decision-points-sheriff-courts/>
- lxviii SPS COVID-19 Information Hub, <https://www.sps.gov.uk/Corporate/Information/covid19/covid-19-information-hub.aspx>
- lxix Coronavirus (COVID-19): Justice Analytical Services data report collection, <https://www.gov.scot/collections/coronavirus-covid-19-justice-analytical-services-data-report/>
- lxx Justice Analytical Services Safer Communities and Justice Statistics Monthly Report, <https://www.gov.scot/collections/justice-analytical-services-safer-communities-and-justice-statistics-monthly-reports/>
- lxxi Council of Europe & University of Lausanne: Annual Penal Statistics, <https://wp.unil.ch/space/space-i/annual-reports/>
- lxxii Council of Europe, "Prison stock on 1<sup>st</sup> January 2024": <https://wp.unil.ch/space/space-i/prison-stock-on-1-january/data-on-1-january-2024/> retrieved 14/11/2024
- lxxiii SPACE-I Annual Reports: <https://wp.unil.ch/space/space-i/annual-reports/> retrieved 14/11/2024
- lxxiv Scottish Government, "Independence in the modern world. Wealthier, happier, fairer: why not Scotland?": <https://www.gov.scot/publications/independence-modern-world-wealthier-happier-fairer-not-scotland/pages/3/> retrieved 5/10/2023
- lxxv Council of Europe, "Prison stock on 1<sup>st</sup> January 2024": <https://wp.unil.ch/space/space-i/prison-stock-on-1-january/data-on-1-january-2024/> retrieved 14/11/2024
- lxxvi Technical Manual: CellWise Data Construction, <https://www.gov.scot/publications/scottish-prison-population-statistics/pages/cellwise-data-construction/>
- lxxvii Scottish Prison Population Statistics Technical Manual, <https://www.gov.scot/publications/scottish-prison-population-statistics/>
- lxxviii Supplementary Tables, <https://www.gov.scot/publications/scottish-prison-population-statistics-2023-24/documents/>  
<https://www.gov.scot/publications/scottish-prison-population-statistics-2022-23/documents/>
- lxxix JAS Monthly Data Report, <https://www.gov.scot/publications/justice-analytical-services-jas-safer-communities-justice-statistics-monthly-data-report-september-2022-edition/pages/11/>