

**Scottish
Fisheries
Statistics
2002**



**Scottish
Fisheries
Statistics
2002**

© Crown copyright 2003

ISBN 0 7559 0963 1

Published by
Scottish Executive
St Andrew's House
Edinburgh

Produced for the Scottish Executive by Astron B32327 9-03

Further copies are available from
The Stationery Office Bookshop
71 Lothian Road
Edinburgh EH3 9AZ

Tel: 0870 606 55 66

The text pages of this document are produced from 100% elemental chlorine-free, environmentally-preferred material and are 100% recyclable.

Contents

General

	Page
Table 1. Employment in sea fishing, and Scottish labour force, 1992 to 2002	1
Table 2. Value of sea fish landings into Scotland by Scottish based vessels; fishermen employed, by region, 2002	1
Table 3. Production and value of farmed fish, Scotland, 1992 to 2002	1
Table 4. Staff employed in fish farming, Scotland, 1992 to 2002	1
Table 5. Wild salmon and grilse, and sea trout, Scotland, 1992 to 2002	1
Chart 1. Active Scottish based vessels, 1988 to 2002	1
Chart 2. Landings by Scottish based vessels, 1988 to 2002	2
Chart 3. Production of farmed fish, Scotland, 1988 to 2002	2

Scottish based vessels, licences and voyages

Table 6. Active Scottish based vessels, power, by overall length group, 31st December 1992 to 2002	2
Table 7. Active Scottish based vessels, tonnage and power by overall length group and age group, 31st December 2002	3
Chart 4. Scottish based vessels by type, 1986 to 2002	3
Chart 5. Scottish based vessels, average age, 1988 to 2002	3
Table 8. Active Scottish based vessels: number, tonnage and power, by overall length group, 31st December 2002	4
Table 9. Active Scottish based vessels, by main fishing method, 31st December 1992 to 2002	4
Table 10. Active Scottish based vessels, by main fishing method and overall length group, 31st December 2002	4
Table 11. Active Scottish based vessels by base district and overall length group, 31st December 2002	5
Table 12. Active Scottish based over 10m vessels by overall length group, 31st December 2001 to 2002	5
Table 13. Scottish based sea fishing licences by category, 31st December 2000 to 2002	5
Table 14. Scottish based sea fishing licences, vessel capacity units by type of licence, 31st December 2002	5
Table 15. Scottish based over 10m sea fishing licences, 31st December 2001 and 2002	5
Table 16. Voyages and landings by Scottish based over 10m vessels by landing district, 2001 and 2002	5

Landings

Table 17. Live weight and value of landings, by species type, 1998 to 2002	6
Chart 6. Average prices of landings into Scotland by UK vessels, by species type, 1985 to 2002	6
Table 18. Total Allowable Catches, UK quotas and liveweight landed by UK vessels, 1998 to 2002	7,8,9
Chart 7. UK uptake of main quota stocks, 2002	9
Table 19. Fixed quota units by sea area and country, 1st January, 2003	9
Table 20. Liveweight and value of landings into the UK by UK vessels, by main species and country of landing, 1998 to 2002	10
Table 21. Liveweight and value of landings into Scotland by UK vessels, by main species, 1998 to 2002	10
Table 22. Liveweight and value of landings into Scottish ports by UK vessels, by landing district and species type, 1998 to 2002	11
Table 23. Liveweight and value of landings into Scotland by UK vessels, by landing district and main species, 2002	12,13
Chart 8. Liveweight landings into Scotland by UK vessels by species type, 1962 to 2002	13
Chart 9. Average prices of landings into Scotland, by species type and month, 2002	14
Table 24. Liveweight and value of landings into Scotland by foreign vessels, by main species, 1998 to 2002	14
Table 25. Liveweight and value of landings into Scotland by foreign vessels, by country of origin, 1998 to 2002	14
Table 26. Liveweight and value of landings into Scotland by foreign vessels, by landing district, 1998 to 2002	14
Table 27. Liveweight and value of landings by Scottish based vessels, by main species, 1998 to 2002	15
Chart 10. Value of landings per Scottish based over 10m vessel, by vessel type, 1986 to 2002	16
Table 28. Liveweight and value of landings abroad by Scottish based vessels, by country of landing, 1998 to 2002	16
Table 29. Liveweight and value of landings from specified ICES areas by Scottish based vessels, by main species, 2002	16
Table 30. Liveweight and value of landings by Scottish based vessels, by main species and overall vessel length group, 2002	17
Chart 11. Value of landings by Scottish based vessels by species type, 1986 to 2002	17
Table 31. Liveweight and value of landings by Scottish based vessels, by main species gear, 2002	18
Chart 12. Liveweight landings by Scottish based vessels by quarter, 2002	18,19
Chart 13. Average value of landings per day at sea by Scottish based over 10 metres vessels by vessel type, 2002	19
Chart 14. Days at sea by Scottish based over 10 metres vessels by vessel type	19
Table 32. Days fished by Scottish based over 10 metres vessels by Ices area, 2002	19
Table 33. Days fished by Scottish based over 10 metres vessels by length group, 2002	19
Table 34. Disposal of sea fish landed into Scotland by UK vessels, 1998 to 2002	20

Fishermen

Table 35. Number of fishermen employed on Scottish based vessels, 1998 to 2002	20
Table 36. Number of fishermen employed by district and employment status, 2002	20
Chart 15. Number of fishermen employed on Scottish based vessels, 1962 to 2002	20

Farmed fish and shellfish

Table 37. Production of farmed fish and shellfish: staff employed, 1998 to 2002	21
Chart 16. Farmed fish and shellfish labour, Scotland, 1988 to 2002	21

Notes	22
-------	----

Table 1. Employment in sea fishing and Scottish labour force, 1992 to 2002

	1992	1993	1994	1995	1996	1997	1998	1999	2000	2001	2002
Total employed in fishing industry	8,140	9,420	8,610	8,395	8,084	8,194	7,771	7,330	6,902	6,637	5,707
Total labour force ('000)	2,262	2,246	2,280	2,288	2,274	2,307	2,318	2,320	2,387	2,301	2,355
Employment in fishing as % of labour force	0.4	0.4	0.4	0.4	0.4	0.4	0.3	0.3	0.3	0.3	0.2

Source : Labour Force Survey; Scottish Fishery Protection Agency

Table 2. Value of sea fish landings into Scotland by Scottish based vessels; fishermen employed, by region, 2002

Region	Landings (1)	Labour	Fishermen	As %
	2002	force (2)	employed	labour force
Eilean Siar, Orkney & Shetland	48.8	29	1,247	4.30
Aberdeenshire	89.5	120	1,593	1.33
Angus	0.6	52	60	0.12
Argyll & Bute	14.3	41	599	1.46
City of Aberdeen	14.8	115	86	0.07
City of Edinburgh	0.0	243	4	0.00
Dumfries and Galloway	0.1	62	99	0.16
East Lothian	0.7	39	57	0.15
Fife	1.9	161	146	0.09
Highland	62.2	106	813	0.77
Moray	3.8	44	350	0.80
North Ayrshire	0.5	53	53	0.10
Scottish Borders	3.9	48	118	0.25
South Ayrshire	6.0	51	482	0.95

(1) £ million (2) thousands, Office for National Statistics

Table 3. Production and value of farmed fish, Scotland, 1992 to 2002

	1992	1993	1994	1995	1996	1997	1998	1999	2000	2001	2002
Fish: salmon (1) - ('000 tonnes)	36.1	48.7	64.1	70.1	83.1	99.2	110.8	126.7	129.0	138.4	145.6
: smolts - (million fish)	20.8	21.0	23.1	26.5	33.6	38.2	44.9	40.0	45.6	47.5	47.2
: rainbow trout (2) - ('000 tonnes)	4.0	4.0	4.3	4.7	4.6	4.7	4.9	5.8	5.2	5.5	6.7
: other - ('000 tonnes)	na	na	na	na	na	na	na	0.1	0.2	0.2	0.4
Shellfish: mussels - ('000 tonnes)	0.9	0.7	0.7	0.9	1.1	1.3	1.4	1.4	2.0	3.0	3.2
- value (£m)	na	na	0.5	0.7	1.0	1.3	1.4	1.5	2.0	3.0	3.4
: other - ('000 tonnes)	0.3	0.3	0.2	0.4	0.3	0.3	0.5	0.4	0.3	0.4	0.3
- value (£m)	na	na	0.7	1.0	0.8	0.7	1.3	0.9	0.9	0.9	0.9

(1) Atlantic salmon production; (2) production for stocking and table

Source: Fisheries Research Services

Table 4. Staff employed in fish farming, Scotland, 1992 to 2002

	1992	1993	1994	1995	1996	1997	1998	1999	2000	2001	2002
Fish - Atlantic salmon (1)	1,260	1,224	1,298	1,355	1,391	1,295	1,309	1,304	1,397	1,265	1,306
- Atlantic salmon eggs/smolts (2)	359	348	378	396	441	510	414	424	444	427	405
- rainbow trout (3)	208	207	209	196	189	182	186	177	168	158	160
- other	na	na	na	na	na	na	na	72	98	98	99
Shellfish	353	344	337	327	345	322	303	308	363	372	347

(1) Employed in salmon production; (2) employed in production of salmon eggs/smolt; (3) employed in production for stocking and table

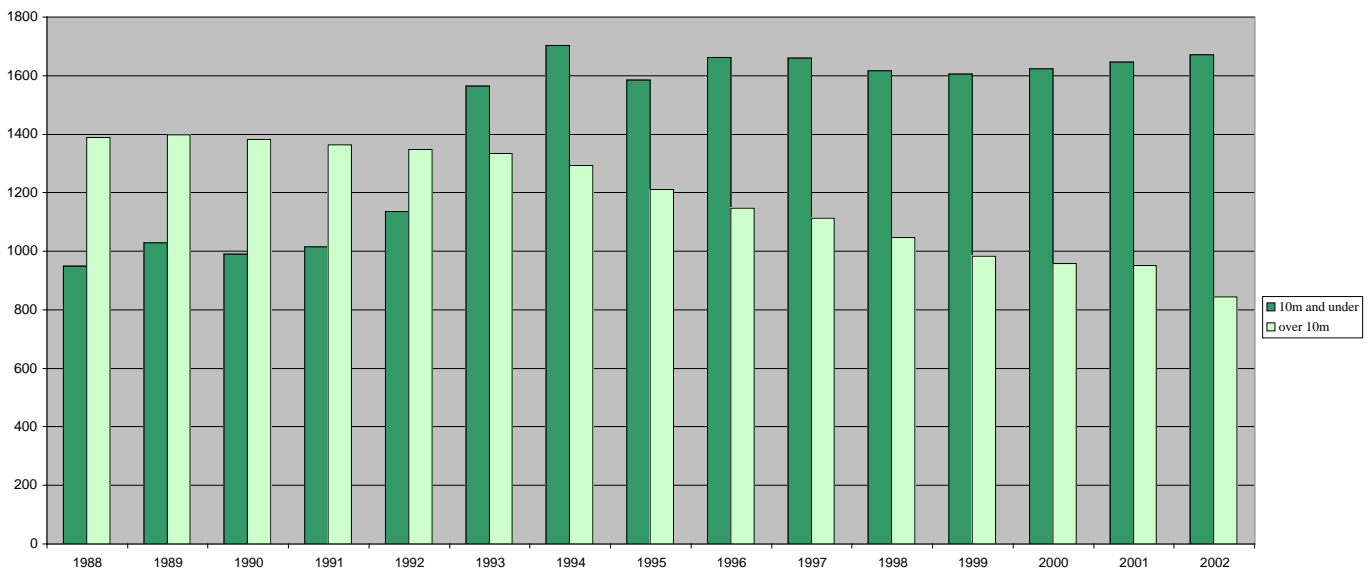
Source: Fisheries Research Services

Table 5. Wild salmon and grilse, and sea trout, Scotland 1992 to 2002 liveweight (tonnes)

	1992	1993	1994	1995	1996	1997	1998	1999	2000	2001	2002
Wild salmon and grilse : Fixed engine	165	155	248	200	129	79	60	34	76	75	54
Nets and coble	140	108	109	104	79	33	27	23	40	21	20
Rods and line (1)	294	283	313	329	261	225	238	198	233	253	205
Total	600	546	670	634	468	337	325	255	349	350	279
Trout : Fixed engine	11	7	9	12	8	3	6	4	11	7	6
Nets and coble	26	24	21	19	14	10	10	9	7	6	6
Rods and line (1)	34	32	27	30	31	30	36	29	37	28	33
Total	71	63	57	61	53	43	52	42	55	41	45

(1) Released and retained.

Chart 1. Active Scottish based vessels, 1988 to 2002



Increase in number of 10m & under vessels in 1993 due to changes in licensing requirements

Chart 2. Landings by Scottish based vessels, 1988 to 2002

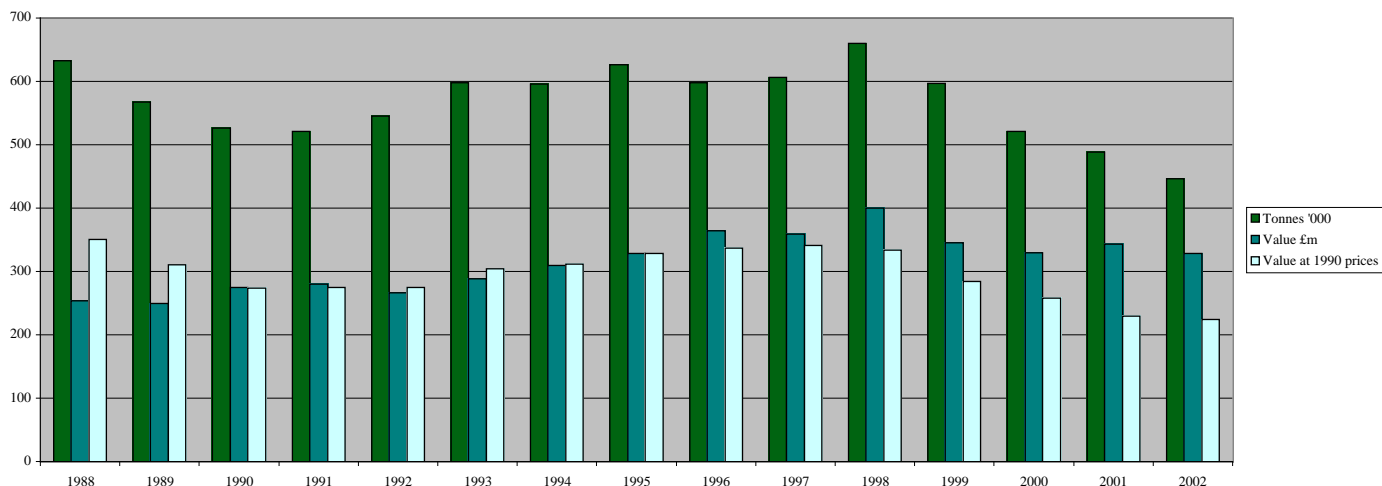
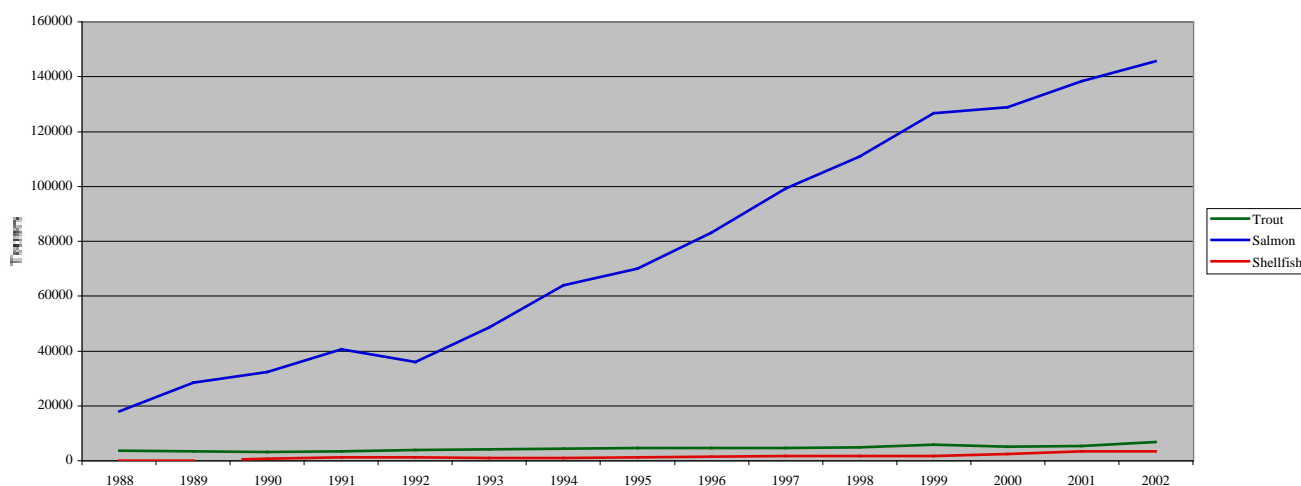


Chart 3. Production of farmed fish, Scotland, 1988 to 2002



Source: Fisheries Research Services

Table 6. Active Scottish based vessels and power, by overall length group, 31st December 1992 to 2002

		10 metres & under	>10 <15 metres	15<20 metres	20<25 metres	25<30 metres	30<35 metres	35 metres & over	Total	Over 10 metres	
										Number	Average
Number	1992	1,135	445	396	307	114	27	58	2,482	1,347	19.00
	1993	1,562	438	379	300	118	30	68	2,895	1,333	19.23
	1994	1,703	430	356	289	120	28	68	2,994	1,291	19.26
	1995	1,583	397	331	279	121	23	58	2,792	1,209	19.26
	1996	1,668	357	305	260	132	22	62	2,806	1,138	19.61
	1997	1,659	348	298	247	133	18	67	2,770	1,111	19.69
	1998	1,628	316	272	229	134	17	65	2,661	1,033	19.88
	1999	1,604	298	263	209	128	19	64	2,585	981	19.95
	2000	1,622	290	254	202	126	22	64	2,580	958	20.04
	2001	1,645	284	260	203	118	23	62	2,595	950	19.98
	2002	1,671	280	237	152	92	19	62	2,513	842	19.64
										Power	Average
Total power (kW)	1992	41,535	48,008	84,676	107,822	58,712	17,903	77,474	436,130	394,595	292.94
	1993	63,892	48,736	83,358	109,554	60,304	20,327	90,028	476,199	412,307	309.31
	1994	68,812	48,657	79,973	107,084	61,545	18,088	90,606	474,765	405,953	314.45
	1995	64,789	45,725	74,874	106,107	62,479	14,146	80,987	449,107	384,318	317.88
	1996	70,949	42,234	70,392	101,103	69,596	13,682	90,725	458,681	387,732	340.71
	1997	71,419	41,489	68,837	97,373	70,392	11,037	97,113	457,661	386,241	347.65
	1998	70,686	37,910	63,511	91,374	71,428	12,771	102,290	449,970	379,284	367.17
	1999	71,684	35,686	61,630	84,070	69,633	15,002	101,723	439,428	367,744	374.87
	2000	76,742	35,234	60,417	83,209	70,070	17,601	106,312	449,584	372,843	389.19
	2001	80,697	35,396	64,947	85,634	66,966	19,362	120,971	473,972	393,276	413.97
	2002	82,690	35,906	60,956	66,308	54,511	15,368	127,089	442,827	360,138	427.72

Scottish based vessels are those licensed at a Scottish port; Scottish registered vessels are those registered at a Scottish port on the Register of Shipping and Seamen. From the beginning of 1993 there was a requirement that all 10 metres and under vessels should be licensed.

Table 7. Active Scottish based vessels, tonnage and power by overall length group and age group, 31st December 2002

	10 metres & under	>10 <15 metres	15<20 metres	20<25 metres	25<30 metres	30<35 metres	35 metres & over	Total	Over 10 metres
Number									
Under 10 years	190	18	23	31	25	6	22	315	125
10<15	275	45	10	18	13	2	4	367	92
15<20	242	50	23	39	25	1	5	385	143
20<25	230	39	38	23	8	-	15	353	123
25<30	150	31	32	25	13	3	3	257	107
30<35	102	44	62	8	6	3	3	228	126
35 years & over	154	35	48	7	2	4	6	256	102
Not known	328	18	1	1	-	-	4	352	24
Total	1671	280	237	152	92	19	62	2513	842
Average age (years)	19.7	22.8	25.7	17.8	16.1	21.0	16.7	20.9	21.5
Total tonnage									
Under 10 years	942	324	2,996	6,633	9,021	3,256	30,306	53,478	52,536
10<15	963	656	797	3,276	3,324	587	2,155	11,758	10,795
15<20	816	853	2,295	6,535	6,031	375	2,813	19,718	18,902
20<25	847	636	3,115	3,248	1,471	-	8,742	18,058	17,212
25<30	595	408	1,876	3,374	2,422	802	1,450	10,926	10,332
30<35	395	590	2,765	872	1,071	544	1,105	7,342	6,947
35 years & over	497	499	1,692	691	242	866	2,154	6,641	6,144
Not known	981	255	43	193	-	-	3,594	5,066	4,085
Total	6,037	4,221	15,577	24,822	23,581	6,430	52,319	132,987	126,953
Average tonnage	4	15	66	163	256	338	844	53	151
Total power (kW)									
Under 10 years	17,332	3,574	9,230	17,899	19,035	7,683	71,073	145,825	128,494
10<15	14,768	7,747	3,068	8,426	7,315	1,631	5,992	48,947	34,179
15<20	10,959	6,688	6,868	16,167	13,819	855	6,725	62,081	51,122
20<25	11,303	4,632	11,607	9,014	3,918	-	25,501	65,975	54,672
25<30	6,482	3,154	7,637	9,768	6,756	1,789	3,987	39,574	33,091
30<35	3,474	4,184	13,715	2,481	2,896	1,848	3,249	31,847	28,373
35 years & over	4,082	3,220	8,551	1,956	772	1,562	3,673	23,817	19,734
Not known	14,290	2,706	280	596	-	-	6,889	24,761	10,471
Total	82,690	35,906	60,956	66,308	54,511	15,368	127,089	442,827	360,136
Average power	49	128	257	436	593	809	2050	176	428

Since the unit of tonnage measurement has been changing from registered tonnage to gross tonnage, incrementally throughout the fleet, year-on-year comparisons may be unreliable

Chart 4. Scottish based vessels by type, 1986 to 2002

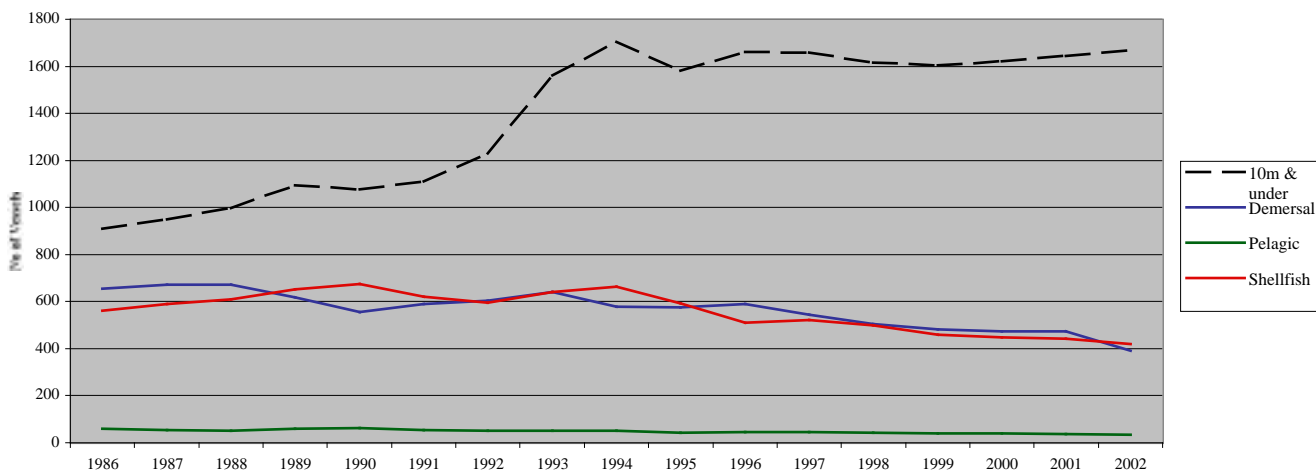


Chart 5. Scottish based vessels, average age, 1988 to 2002

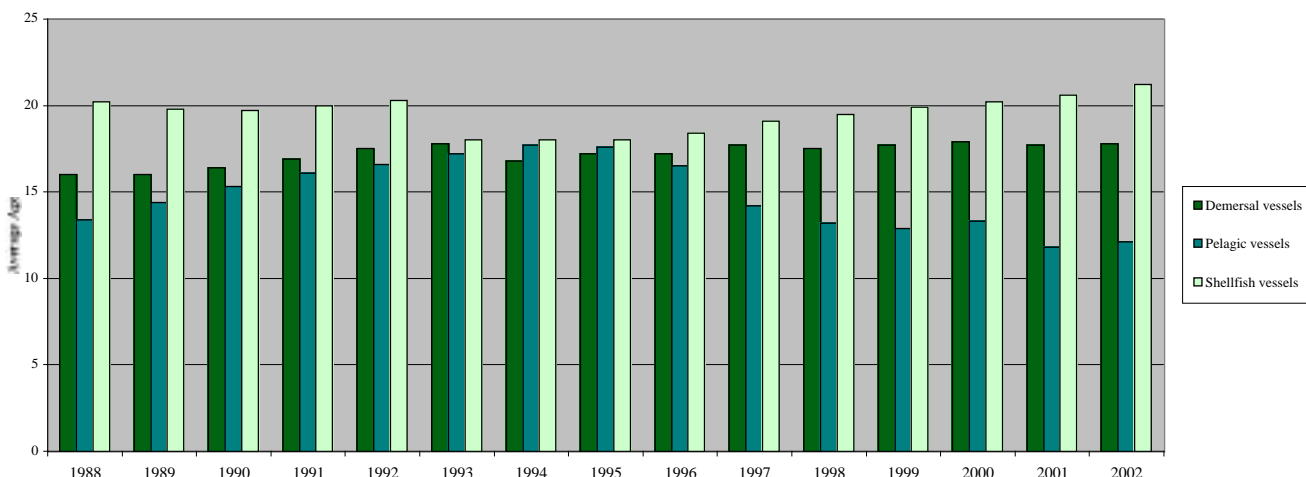


Table 8. Active Scottish based vessels: number, tonnage and power by overall length group, 31st December 2002

Length	Tonnes	Vessels	Total tonnes	Length	kW	Vessels	Total power		
10m & under	<40	1,671	6,037	10 m & under	<40	925	16,378		
>10 <15	<40	279	4,180	>10<15	40<75	354	19,305		
	40<60	1	41		75<150	317	32,196		
	Total		280		4,221	150<225	60	11,077	
					225<375	15	3,733		
15<20	<40	83	2,359	Total			1,671	82,690	
	40<60	48	2,291	15<20	40<75	1	67		
	60<80	31	2,126		75<150	22	2,831		
	80<100	22	1,955		150<225	76	14,601		
	100<150	42	4,945		225<375	119	34,740		
	150<200	11	1,901		375<550	18	8,096		
Total		237	15,577		550<750	1	620		
20<25	60<80	4	273	Total			237	60,956	
	80<100	8	707	20<25	75<150	1	149		
	100<150	56	7,308		150<225	4	806		
	150<200	55	9,488		225<375	51	17,455		
	200<300	25	5,779		375<550	75	33,998		
	300<500	4	1,266		550<750	19	12,128		
Total		152	24,822		Over 750	2	1,772		
25<30	80<100	1	97	Total			152	66,308	
	100<150	2	291	25<30	150<225	2	442		
	150<200	19	3,263		225<375	2	592		
	200<300	46	10,887		375<550	36	17,224		
	300<500	24	9,043		550<750	47	31,090		
Total		92	23,581		Over 750	5	5,162		
30<35	150<200	4	741	Total			92	54,511	
	200<300	7	1,688	30<35	225<375	1	354		
	300<500	2	745		375<550	5	2,243		
	Over 500	6	3,256		550<750	6	4,021		
Total		19	6,430		Over 750	7	8,750		
35 & over	300<500	28	10,750	Total			19	15,368	
	Over 500	34	41,569	35 & over	375<550	2	1,007		
	Total		62		52,319	550<750	7	4,599	
					Over 750	53	121,483		
Total	Under 40	2,033	12,576	Total			62	127,089	
	40<60	49	2,332	Total	Under 40	928	16,482		
	60<80	35	2,399		40<75	388	21,452		
	80<100	31	2,760		75<150	511	53,276		
	100<150	100	12,545		150<225	192	36,298		
	150<200	89	15,393		225<375	210	62,602		
	200<300	78	18,354		375<550	137	63,091		
	300<500	58	21,804		550<750	80	52,458		
	Over 500	40	44,825		Over 750	67	137,167		
	Total		2,513		132,987	Total			2,513

Since the unit of tonnage measurement has been changing from registered tonnage to gross tonnage, incrementally throughout the fleet, year-on-year comparisons may be unreliable

Table 9. Active Scottish based vessels by main fishing method, 31st December 1992 to 2002

	10m & under				Over 10m										Total			
	Nephrops trawl	Creel fishing	Other	Total	Pelagic				Demersal				Shellfish			Total		
					Purse seine	Pelagic trawl	Other	Total	Trawl	Seine	Lines	Other	Total	Nephrops trawl			Other	Total
1992	69	1,069	91	1,229	40	12	-	52	381	208	10	6	605	364	232	596	1,253	2,482
1993	47	1,421	94	1,562	37	15	-	52	417	192	20	12	641	357	283	640	1,333	2,895
1994	50	1,527	127	1,704	37	14	-	51	371	174	22	11	578	366	296	662	1,291	2,995
1995	43	1,448	97	1,588	34	15	-	49	374	146	14	9	543	322	254	576	1,168	2,756
1996	53	1,520	109	1,682	33	17	-	50	409	122	14	8	553	300	255	555	1,158	2,840
1997	62	1,480	117	1,659	28	17	-	45	418	104	8	14	544	277	245	522	1,111	2,770
1998	63	1,440	125	1,628	25	17	-	42	390	96	5	14	505	248	238	486	1,033	2,661
1999	73	1,411	120	1,604	21	19	-	40	375	87	4	15	481	236	224	460	981	2,585
2000	91	1,404	127	1,622	19	19	-	38	371	85	4	12	472	223	225	448	958	2,580
2001	99	1,421	125	1,645	9	27	-	36	379	80	5	9	473	223	218	441	950	2,595
2002	100	1,440	131	1,671	8	25	-	33	326	47	6	11	390	208	211	419	842	2,513

From the beginning of 1993 there was a requirement that all 10 metres and under vessels should be licensed.

Table 10. Active Scottish based vessels, by main fishing method and overall length group, 31st December 2002

	<8 metres	8-10 metres	>10-12 metres	>12<15 metres	15-18 metres	>18-24 metres	>24-30 metres	>30-40 metres	>40-50 metres	over 50 metres	Total
Demersal single trawl	4	19	6	11	36	112	67	18	1	-	274
Demersal pair trawl	-	-	-	-	4	15	13	-	-	-	32
Seine net	-	-	-	1	3	18	18	-	-	-	40
Lines	21	9	-	-	-	-	2	4	-	-	36
Demersal pair seine	-	-	-	-	-	2	5	-	-	-	7
Demersal gill nets	9	9	3	1	-	-	2	5	-	-	29
Demersal twin/mult trawl	-	1	-	-	-	18	6	2	-	-	27
Beam trawl	-	1	-	1	-	1	1	7	7	-	18
Other demersal	2	0	-	-	-	-	-	-	-	-	2
Demersal total	36	39	9	14	43	166	114	36	8	-	465
Purse seine	-	-	-	-	-	-	-	-	4	4	8
Pelagic trawl	-	-	-	-	-	-	-	2	4	19	25
Other pelagic	-	-	-	-	-	-	-	-	-	-	-
Pelagic total	-	-	-	-	-	-	-	2	8	23	33
Creel fishing	1,033	408	94	15	4	5	-	-	-	-	1,559
Nephrops trawl	2	98	67	47	71	20	3	-	-	-	308
Mechanical dredging	2	12	15	12	32	20	3	4	-	-	100
Suction dredging	-	1	2	-	-	-	-	-	-	-	3
Shell fishing by hand	31	7	5	-	-	-	-	-	-	-	43
Shrimp trawl	-	2	-	-	-	-	-	-	-	-	2
Shellfish total	1,068	528	183	74	107	45	6	4	0	0	2,015
Total	1,104	567	192	88	150	211	120	42	16	23	2,513

Table 11. Active Scottish based vessels by base district and overall length group, 31st December 2002

	<8 metres	8-10 metres	>10-12 metres	>12<15 metres	15-18 metres	>18-24 metres	>24-30 metres	>30-40 metres	>40-50 metres	over 50 metres	Total
Eyemouth	39	38	17	8	7	10	3	-	-	-	122
Pittenweem	57	30	9	6	3	4	2	-	-	-	111
Aberdeen	52	20	5	3	3	7	5	1	-	-	96
Peterhead	20	16	4	3	5	23	30	11	8	4	124
Fraserburgh	66	34	4	5	13	73	37	3	3	11	249
Buckie	14	17	2	-	7	30	16	4	-	-	90
Wick	74	27	14	2	4	8	2	-	-	-	131
Total east coast	322	182	55	27	42	155	95	19	11	15	923
Orkney	95	37	24	8	3	1	2	3	0	-	173
Shetland	106	63	10	3	6	9	15	-	2	8	222
Stornoway	201	70	31	8	20	3	-	-	3	-	336
Total Islands	402	170	65	19	29	13	17	3	5	8	731
Kinlochbervie	19	5	1	-	1	3	-	-	-	-	29
Lochinver	10	4	1	1	1	4	-	1	-	-	22
Ullapool	27	16	10	5	6	1	-	-	-	-	65
Mallaig	39	19	8	6	16	13	1	-	-	-	102
Oban	69	48	18	4	5	3	1	-	-	-	148
Campbeltown	99	42	15	11	28	1	-	-	-	-	196
Ayr	51	28	6	11	19	18	6	19	-	-	158
Portree	66	53	13	4	3	-	-	-	-	-	139
Total west coast	380	215	72	42	79	43	8	20	-	-	859
Total	1104	567	192	88	150	211	120	42	16	23	2513

A district is a geographical area within which there are a number of creeks or ports

Table 12. Active Scottish based over 10 metres vessels by overall length group, 31st December 2001 to 2002

	>10 <15 metres	15<20 metres	20<25 metres	25<30 metres	30<35 metres	35 metres & over
Active Scottish vessels, 31st December 2001	284	260	203	118	23	62
Continued to be based in Scotland	262	230	150	91	19	56
Transferred to another UK port	5	4	5	1	-	1
Became inactive	17	26	48	26	4	5
Transferred from another UK port	9	6	2	-	-	3
Became active	5	-	-	1	-	1
Newly built vessels	4	1	-	-	-	2
Active Scottish vessels, 31st December 2002	280	237	152	92	19	62

Table 13. Scottish based sea fishing licences by category, 31st December 2000 to 2002

	Vessel licences				Entitlements				Total			
	Category A	Category B	Category C	<=10m	Category A	Category B	Category C	<=10m	Category A	Category B	Category C	<=10m
2000	785	87	64	1,562	85	2	2	45	870	89	66	1,607
2001	788	79	66	1,587	52	7	3	66	840	86	69	1,653
2002	675	85	68	1,605	60	5	2	57	735	90	70	1,662

In 2002, includes 32 pelagic licences (category A) on vessels

Table 14. Scottish based sea fishing licences: vessel capacity units by type of licence, 31st December 2002

	On vessels				Entitlements				Total			
	Category A	Category B	Category C	<=10m	Category A	Category B	Category C	<=10m	Category A	Category B	Category C	<=10m
Pelagic licences	56,660	-	-	-	6,380	-	-	-	63,040	-	-	-
Other licences	195,994	9,594	10,599	69,153	14,562	525	167	1,876	210,556	10,119	10,766	71,030

Table 15. Scottish based, over 10 metres sea fishing licences, by category, 31st December 2001 and 2002

	On vessels			Entitlements		
	Category A	Category B	Category C	Category A	Category B	Category C
Scottish based licences, 31st December 2001	788	79	66	52	7	3
Remained on Scottish based vessels	642	76	65	34	3	-
Became Scottish entitlements	52	3	1	13	4	1
Transferred/aggregated to other UK vessels	-	-	-	2	-	1
Other losses	94	-	0	3	-	1
Placed on vessel from Scottish entitlements	33	9	3	41	2	1
Transferred/aggregated from other UK ports	-	-	-	-	-	-
Scottish based licences, 31st December 2002	675	85	68	75	5	1

Table 16. Voyages and landings by Scottish based over 10 metres vessels by landing district, 2001 & 2002

Voyages ending in district:	2001			2002		
	Number	Tonnes	Value (£000)	Number	Tonnes	Value (£000)
Eyemouth	3,684	2,420	3,271	3,333	3,485	3,983
Piitenweem	2,839	778	1,201	2,691	704	1,094
Aberdeen	1,764	21,995	15,167	1,705	17,110	15,325
Peterhead	3,554	76,097	57,757	2,983	92,165	59,210
Fraserburgh	4,081	39,733	30,815	4,170	35,301	29,713
Buckie	984	2,329	3,319	1,006	2,672	3,351
Wick	1,908	15,409	18,508	1,895	16,634	18,811
Orkney	1,182	1,711	2,159	1,072	1,507	1,895
Shetland	2,624	59,380	27,654	2,356	79,436	35,536
Stornoway	6,435	3,498	6,623	5,375	3,232	5,924
Kinlochbervie	1,022	8,506	10,170	801	7,330	9,084
Lochinver	1,259	6,109	7,514	1,352	5,325	6,823
Ullapool	2,495	7,650	8,653	2,519	7,139	9,533
Mallaig	3,585	7,716	9,932	2,620	7,714	7,736
Portree	3,783	2,074	5,194	3,353	1,867	4,264
Oban	2,311	3,047	5,059	2,588	3,611	5,364
Campbeltown	7,414	3,605	5,697	7,147	3,142	5,422
Ayr	4,594	6,052	5,343	4,764	7,877	6,249
Other UK	2,469	24,131	13,752	1,351	15,323	10,309
Denmark	76	38,863	8,098	74	35,057	9,260
Netherlands	598	9,776	12,629	551	9,367	12,493
Norway	239	105,907	46,012	157	68,926	37,140
Spain	177	3,735	8,987	144	3,105	7,684
Other foreign ports	81	27,734	9,985	54	9,998	4,325
Total	59,158	478,255	323,500	54,061	438,026	310,527

Table 17. Live weight and value of landings by species type, 1998 to 2002

		Tonnes (thousand)					Value (£ million)					
		1998	1999	2000	2001	2002	1998	1999	2000	2001	2002	
Landings by UK vessels into: Scotland	Demersal	208.8	175.9	152.7	121.8	122.0	182.0	173.4	159.9	132.6	119.3	
	Pelagic	105.9	123.9	103.2	116.4	143.4	24.2	14.4	15.6	31.6	48.2	
	Shellfish	54.4	49.9	51.8	51.5	50.8	85.5	94.3	86.0	92.5	92.1	
	Total	369.1	349.7	307.7	289.7	316.3	291.6	282.1	261.5	256.7	259.6	
	Rest of UK	Demersal	82.8	68.4	56.9	53.7	48.0	109.9	105.2	87.7	84.9	78.5
Landings by foreign vessels into: Scotland	Pelagic	30.0	21.7	24.8	30.2	21.4	6.9	4.9	5.5	7.3	4.8	
	Shellfish	69.8	66.8	75.2	84.7	80.7	75.2	72.0	67.3	74.8	72.6	
	Total	182.6	156.9	156.9	168.6	150.2	191.9	182.1	160.5	167.0	155.9	
	Rest of UK	Demersal	22.3	25.5	29.6	28.9	39.4	28.6	35.0	43.0	40.5	49.8
	Pelagic	22.6	14.2	22.8	30.5	22.1	5.8	2.0	2.3	4.4	5.6	
Landings by UK vessels into UK	Shellfish	0.3	0.1	0.1	0.1	0	0.4	0.2	0.4	0.2	0.1	
	Total	45.2	39.9	52.4	59.5	61.6	34.9	37.3	45.7	45.0	55.5	
	Rest of UK	Demersal	11.9	10.6	7.3	8.1	7.8	21.2	19.8	13.6	17.5	17.0
	Pelagic	0.8	2.7	1.3	3.3	1.4	0.2	0.5	0.3	1.0	0.6	
	Shellfish	0.6	0.4	0.6	0.7	1.5	0.9	0.6	0.9	0.9	2.3	
All landings into UK	Total	13.3	13.8	9.2	12.1	10.7	22.3	20.9	14.8	19.3	19.8	
	Demersal	291.6	244.3	209.6	175.5	170.0	291.9	278.6	247.6	217.5	197.8	
	Pelagic	135.9	145.6	128.0	146.6	164.8	31.1	19.3	21.1	38.9	53.0	
	Shellfish	124.2	116.7	127.0	136.2	131.5	160.7	166.3	153.3	167.3	164.7	
	Total	551.7	506.6	464.6	458.3	466.5	483.5	464.2	422.0	423.7	415.5	
Landings by UK vessels into Scotland as per cent of landings by UK vessels into UK	Demersal	325.8	280.4	246.5	212.6	217.2	341.7	333.4	304.2	275.4	264.6	
	Pelagic	159.3	162.5	152.1	180.5	188.3	37.1	21.8	23.7	44.2	59.2	
	Shellfish	125.1	117.2	127.7	136.9	133.0	162.0	167.1	154.6	168.4	167.1	
	Total	610.2	560.3	526.2	530.0	538.8	540.7	522.4	482.5	488.0	490.8	
	Rest of UK	Demersal	71.6	72.0	72.9	69.4	71.8	62.4	62.2	64.6	61.0	60.3
Landings into Scotland as per cent of landings into UK	Pelagic	77.9	85.1	80.6	79.4	87.0	77.8	74.6	73.9	81.3	90.9	
	Shellfish	43.8	42.8	40.8	37.8	38.6	53.2	56.7	56.1	55.3	55.9	
	Total	66.9	69.0	66.2	63.2	67.8	60.3	60.8	62.0	60.6	62.5	
	Rest of UK	Demersal	70.9	71.8	74.0	70.9	74.3	61.6	62.5	66.7	62.8	63.9
	Pelagic	80.7	85.0	82.8	81.4	87.9	80.9	75.2	75.5	81.3	90.9	
Scottish based vessels - landings into UK	Shellfish	43.7	42.7	40.6	37.7	38.2	53.0	56.6	55.9	55.0	55.2	
	Total	67.9	69.5	68.4	65.9	70.1	60.4	61.1	63.7	61.8	64.2	
	- landings abroad	Demersal	208.4	173.7	147.9	117.3	117.4	181.2	172.1	155.0	127.2	114.9
	Pelagic	117.5	129.0	114.2	131.2	150.3	26.0	16.0	18.0	35.3	49.9	
	Shellfish	54.7	49.6	51.9	53.3	51.7	85.3	93.4	86.8	94.1	92.5	
Other UK based vessels - landings into UK	Total	380.6	352.3	314.0	301.9	319.4	292.5	281.5	259.8	256.7	257.4	
	- landings abroad	Demersal	31.3	19.2	18.1	12.9	15.3	27.8	24.2	19.0	23.8	21.7
	Pelagic	247.9	224.8	189.0	173.2	110.8	77.4	38.1	50.0	61.2	47.9	
	Shellfish	0.5	0.3	0.2	0.2	0.4	1.9	1.1	0.9	0.9	1.3	
	Total	279.8	244.3	207.3	186.3	126.5	107.2	63.4	69.9	85.9	70.9	
Landings by UK vessels	Demersal	83.2	70.6	61.7	58.2	52.6	110.7	106.5	92.6	90.3	82.9	
	Pelagic	18.4	16.6	13.8	15.4	14.5	5.1	3.3	3.1	3.6	3.1	
	Shellfish	69.5	67.1	75.1	82.9	79.8	75.4	72.9	66.5	73.2	72.2	
	Total	171.1	154.3	150.6	156.4	147.1	191.0	182.6	162.2	167.0	158.1	
	- landings abroad	Demersal	34.9	28.7	28.2	30.0	30.7	45.1	36.1	33.3	36.8	35.4
Pelagic	49.5	49.9	39.8	55.7	56.1	12.5	11.3	9.6	17.0	15.5		
Shellfish	7.9	6.8	8.2	7.4	5.7	12.8	12.9	15.4	10.9	8.0		
Percent landed by Scottish based vessels	Total	92.4	85.4	76.2	93.1	92.5	70.5	60.3	58.3	64.8	58.9	
	Demersal	357.8	292.2	255.9	218.4	216.0	364.8	338.9	299.9	278.1	254.9	
	Pelagic	433.3	420.3	356.8	375.5	331.7	121.0	68.7	80.7	117.1	116.4	
	Shellfish	132.6	123.8	135.4	143.8	137.6	175.4	180.3	169.6	179.1	174.0	
	Total	923.9	836.3	748.1	737.7	685.5	661.2	587.9	550.2	574.4	545.3	

Chart 6. Average prices of landings into Scotland by UK vessels, by species type, 1985 to 2002

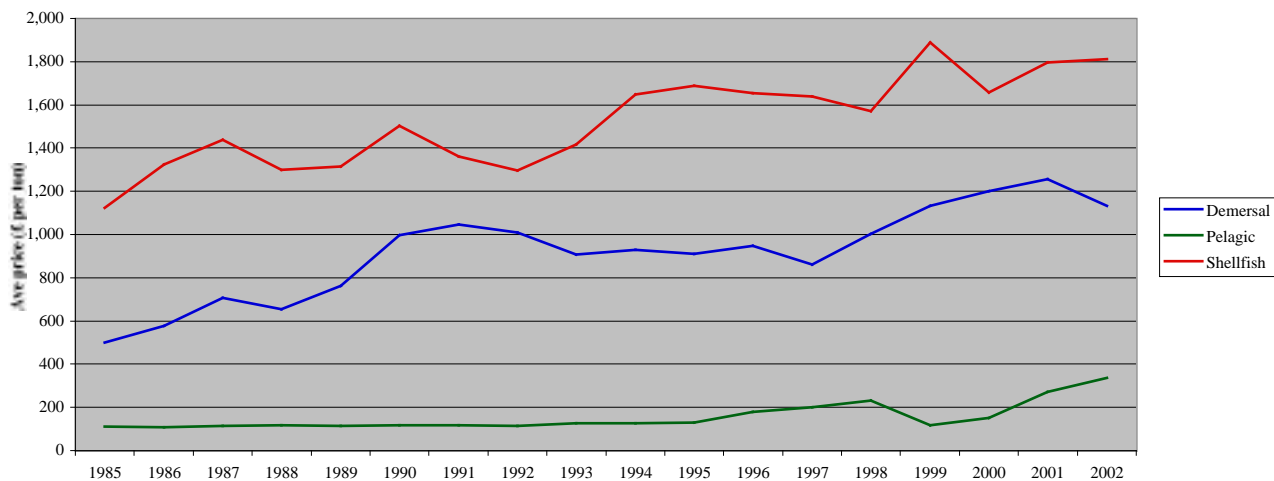


Table 18. Total Allowable Catches, UK quotas, and liveweight landed by UK vessels, 1998 to 2002

Area	Species	Sea area	Year	EU total		UK quota		UK uptake	
				allowable catch	exchanges	After TAC	% of	Tonnes	% of quota
North sea	Cod	IIa (EU),IV	1998	125,200	58,385	46.6	53,339	91.4	
			1999	119,890	55,660	46.4	33,364	59.9	
			2000	73,610	34,149	46.4	27,555	80.7	
	Haddock	IIa (EU),IV	2001	40,720	20,555	50.5	19,712	95.9	
			2002	41,620	20,377	49.0	18,522	90.9	
			1998	85,050	66,000	77.6	63,572	96.3	
	Whiting	IIa (EU),IV	1999	69,680	57,088	81.9	56,025	98.1	
			2000	60,620	53,056	87.5	39,655	74.7	
			2001	47,895	41,184	86.0	32,576	79.1	
	Saithe	IIa,III(EU),IV	2002	77,935	59,805	76.7	43,234	72.3	
			1998	50,475	27,432	54.3	19,587	71.4	
			1999	38,100	24,415	64.1	19,477	79.8	
	Plaice	IIa (EU),IV	2000	25,690	19,470	75.8	18,943	97.3	
			2001	21,775	14,363	66.0	11,887	82.8	
			2002	32,358	19,608	60.6	9,060	46.2	
	Sole	II,IV	1998	46,560	7,790	16.7	7,722	99.1	
			1999	52,800	8,900	16.9	8,461	95.1	
			2000	41,680	6,820	16.4	6,851	100.5	
	Hake	IIa(EU),IV(EU)	2001	42,640	6,497	15.2	6,587	101.4	
			2002	66,150	10,718	16.2	9,267	86.5	
			1998	83,910	23,740	28.3	19,894	83.8	
	Norway lobster	IIa(EU),IV(EU)	1999	98,625	27,970	28.4	17,072	61.0	
			2000	94,210	26,520	28.1	18,922	71.3	
			2001	76,540	18,705	24.4	19,149	102.4	
	Norway other	IV(Norway)	2002	73,110	19,063	26.1	16,708	87.6	
			1998	19,100	913	4.8	885	96.9	
			1999	22,000	1,171	5.3	1,148	98.0	
	Anglers	IIa(EU),IV(EU)	2000	22,000	936	4.3	947	101.2	
			2001	19,000	1,274	6.7	909	71.4	
			2002	16,000	800	5.0	693	86.6	
	Megrim	IIa(EU),IV(EU)	1998	2,070	376	18.2	276	73.4	
			1999	1,970	350	17.8	339	96.9	
			2000	1,586	351	22.1	296	84.3	
	Lemon sole & witches	IIa(EU),IV(EU)	2001	870	211	24.3	196	93.0	
			2002	946	224	23.7	157	70.1	
			1998	15,200	13,135	86.4	10,623	80.9	
	Skate & rays	IIa(EU),IV(EU)	1999	15,200	14,865	97.8	13,132	88.3	
			2000	17,200	14,862	86.4	12,005	80.8	
			2001	15,480	12,961	83.7	12,318	95.0	
	Dabs & flounder	IIa(EU),IV(EU)	2002	16,623	13,885	83.5	12,909	93.0	
			1998	11,000	3,925	35.7	2,460	62.7	
			1999	11,000	3,875	35.2	2,366	61.1	
Turbot & brill	IIa(EU),IV(EU)	2000	11,000	3,875	35.2	2,722	70.2		
		2001	11,000	3,875	35.2	2,401	62.0		
		2002	11,000	3,875	35.2	1,928	49.8		
Spurdog	IIa(EU),IV(EU)	1998	22,070	17,960	na	14,437	80.4		
		1999	22,070	17,960	81.4	10,717	59.7		
		2000	17,660	14,370	81.4	9,942	69.2		
Northern prawns	IIa(EU),IV(EU)	2001	14,130	11,495	81.4	10,499	91.3		
		2002	10,500	9,205	87.7	8,534	92.7		
		1998	3,000	2,880	na	2,623	91.1		
Herring	IVa,b	1999	3,000	2,860	95.3	2,119	74.1		
		2000	3,000	2,870	95.7	2,040	71.1		
		2001	2,700	2,589	95.9	1,850	71.5		
Pollack	Vb(EU),VI	2002	2,700	2,584	95.7	1,676	64.9		
		1998	12,000	7,330	61.1	4,154	56.7		
		1999	12,000	7,330	61.1	4,259	58.1		
Haddock	Vb(EU),VI	2000	12,000	7,330	61.1	3,895	53.1		
		2001	10,800	6,580	60.9	3,478	52.9		
		2002	9,720	5,937	61.1	2,317	39.0		
Whiting	Vb(EU),VI	1998	6,060	3,920	64.7	2,166	55.3		
		1999	6,060	3,920	64.7	1,580	40.3		
		2000	6,060	3,920	64.7	1,371	35.0		
Saithe	Vb(EU),VI	2001	4,848	3,128	64.5	1,299	41.5		
		2002	4,848	3,136	64.7	1,357	43.3		
		1998	30,070	2,590	8.6	2,188	84.5		
Plaice	Vb(EU),VI	1999	30,070	2,690	8.9	1,994	74.1		
		2000	30,070	2,590	8.6	1,576	60.8		
		2001	27,060	2,330	8.6	1,391	59.7		
Anglers	Vb(EU),VI	2002	27,060	2,331	8.6	1,256	53.9		
		1998	9,000	1,390	15.4	691	49.7		
		1999	9,000	1,390	15.4	594	42.7		
Norway lobster	Vb(EU),VI	2000	9,000	1,390	15.4	658	47.3		
		2001	7,200	1,110	15.4	768	69.2		
		2002	6,750	1,042	15.4	631	60.6		
Megrim	Vb(EU),VI	1998	na	na	na	na	na		
		1999	8,870	7,177	80.9	1,653	23.0		
		2000	8,870	7,177	80.9	1,291	18.0		
Spurdog	IIa(EU),IV(EU)	2001	8,870	7,177	80.9	1,006	14.0		
		2002	7,100	5,745	80.9	1,013	17.6		
		1998	na	na	na	na	na		
Northern prawns	IIa(EU),IV(EU)	1999	7,016	1,948	27.8	480	24.6		
		2000	7,016	1,948	27.8	378	19.4		
		2001	6,404	1,778	27.8	465	26.2		
Herring	IVa,b	2002	4,880	1,074	22.0	68	6.3		
		1998	155,340	38,542	24.8	38,542	100.0		
		1999	163,150	40,503	24.8	40,271	99.4		
Pollack	Vb(EU),VI	2000	164,000	40,570	24.7	40,675	100.3		
		2001	164,000	40,570	24.7	40,834	100.7		
		2002	146,327	38,101	26.0	38,094	100.0		

Table 18. continued

Area	Species	Sea area	Year	EU total allowable catch	UK quota After exchanges	% of TAC	UK uptake Tonnes	% of quota	
West of Scotland	Herring	Vb(EU), VIa(N), VIIb	1998	76,710	46,360	60.4	43,153	93.1	
			1999	64,940	39,240	60.4	37,395	95.3	
			2000	41,340	24,990	60.4	37,395	149.6	
				2001	35,700	21,570	60.4	21,795	101.0
				2002	35,700	21,571	60.4	20,926	97.0
	Mackerel	II(excl EU,Ice), Vb(EU), VI,VII, VIII(excl c), XII(intl), XIVb(intl)	1998	306,130	178,287	58.2	179,070	100.4	
			1999	282,090	164,580	58.3	165,193	100.4	
			2000	329,410	192,770	58.5	191,852	99.5	
			2001	337,639	197,099	58.4	197,813	100.4	
			2002	345,012	202,139	58.6	199,237	98.6	
	Herring	VIa(Clyde)	1998	1,000	1,000	100.0	113	11.3	
			1999	1,000	1,000	100.0	16	1.6	
			2000	1,000	1,000	100.0	1	0.1	
			2001	1,000	1,000	100.0	437	43.7	
			2002	1,000	1,000	100.0	46	4.6	
	Horse mackerel	Vb(EU), VI,VII, VIII(excl c), XII(intl), XIVb(intl)	1998	313,000	30,700	-	30,633	-	
			1999	258,000	23,560	9.1	18,503	78.5	
			2000	233,000	19,314	8.3	13,618	70.5	
			2001	233,000	23,233	10.0	16,103	69.3	
			2002	143,000	13,040	9.1	10,887	83.5	
	Blue whiting (inc Biscay)	Vb(EU), VI,VII, VIII(excl c), XII(intl), XIVb(intl)	1998	123,000	101,500	82.5	71,219	70.2	
			1999	150,000	35,000	23.3	92,694	264.8	
			2000	150,000	42,921	28.6	42,921	100.0	
			2001	194,360	52,103	26.8	51,889	99.6	
2002			121,845	31,548	25.9	28,874	91.5		
Hake	Vb(EU), VI,VII, XII(intl), XIVb(intl)	1998	33,160	5,843	17.6	4,771	81.7		
		1999	30,910	5,533	17.9	5,146	93.0		
		2000	23,600	4,353	18.4	4,115	94.5		
		2001	13,920	2,653	19.1	2,469	93.1		
		2002	15,118	2,685	17.8	2,386	88.9		
Area VII	Cod	VIIa	1998	7,100	3,045	42.9	2,618	86.0	
			1999	5,500	2,320	42.2	1,750	75.4	
			2000	2,100	950	45.2	839	88.3	
			2001	2,100	925	44.0	902	97.5	
			2002	3,200	1,377	43.0	1,166	84.7	
	Cod	VII(excl a), VIII, IX, X	1998	20,000	1,813	9.1	1,660	91.6	
			1999	19,000	1,836	9.7	1,318	71.8	
			2000	16,000	1,740	10.9	1,100	63.2	
			2001	10,500	1,237	11.8	1,110	89.7	
			2002	8,700	802	9.2	760	94.8	
	Haddock	VII, VIII, IX, X	1998	20,000	1,985	9.9	1,559	78.5	
			1999	20,000	4,590	23.0	1,828	39.8	
			2000	13,200	3,049	23.1	1,407	46.1	
			2001	15,250	2,383	15.6	2,856	119.8	
			2002	9,300	1,436	15.4	910	63.4	
Whiting	VIIa	1998	5,000	2,330	46.6	1,954	83.9		
		1999	4,400	1,922	43.7	1,274	66.3		
		2000	2,640	1,220	46.2	685	56.1		
		2001	1,390	685	49.3	509	74.3		
		2002	1,000	443	44.3	312	70.4		
Whiting	VII(excl a)	1998	27,000	2,861	10.6	2,030	71.0		
		1999	25,000	2,117	8.5	1,491	70.4		
		2000	22,500	1,527	6.8	1,388	90.9		
		2001	21,000	1,110	5.3	1,046	94.2		
		2002	31,700	3,402	10.7	971	28.5		
Saithe	VII, VIII, IX, X	1998	8,800	1,350	15.3	979	72.5		
		1999	8,800	1,350	15.3	719	53.3		
		2000	6,500	970	14.9	458	47.2		
		2001	5,600	805	14.4	301	37.4		
		2002	8,710	1,340	15.4	296	22.1		
Plaice	VIIa	1998	2,400	885	36.9	696	78.6		
		1999	2,400	887	37.0	711	80.2		
		2000	2,400	1,035	43.1	632	61.1		
		2001	2,238	924	41.3	605	65.5		
		2002	2,400	1,223	51.0	577	47.2		
Plaice	VIIde	1998	5,700	1,690	29.6	1,569	92.8		
		1999	7,400	2,150	29.1	1,664	77.4		
		2000	6,500	1,797	27.6	1,643	91.4		
		2001	6,000	1,665	27.8	1,419	85.2		
		2002	6,690	1,856	27.7	1,807	97.4		
Plaice	VIIfg	1998	1,100	217	19.7	174	80.2		
		1999	900	195	21.7	169	86.7		
		2000	900	175	19.4	134	76.6		
		2001	755	180	23.8	135	75.0		
		2002	680	119	17.5	105	88.2		
Plaice	VIIhjk	1998	1,350	170	12.6	103	60.6		
		1999	1,350	170	12.6	82	48.2		
		2000	1,350	170	12.6	76	44.7		
		2001	1,215	150	12.3	72	48.0		
		2002	970	146	15.1	60	41.1		
Sole	VIIa	1998	900	187	20.8	169	90.4		
		1999	900	191	21.2	173	90.6		
		2000	900	206	22.9	141	68.4		
		2001	1,190	264	22.2	197	74.6		
		2002	1,100	242	22.0	168	69.4		
Sole	VII d	1998	5,230	1,005	19.2	803	79.9		
		1999	4,700	905	19.3	768	84.9		
		2000	4,100	711	17.3	617	86.8		
		2001	4,790	964	20.1	785	81.4		
		2002	5,200	1,096	21.1	976	89.1		
Sole	VIIe	1998	670	395	59.0	368	93.2		
		1999	700	410	58.6	375	91.5		
		2000	700	385	55.0	383	99.5		
		2001	600	355	59.2	378	106.5		
		2002	525	288	54.9	290	100.7		

Area	Species	Sea area	Year	EU total allowable catch	UK quota After exchanges	% of TAC	UK uptake Tonnes	% of quota		
Area VII	Sole	VIIfg	1998	850	219	25.8	198	90.4		
			1999	960	261	27.2	231	88.5		
			2000	960	291	30.3	243	83.5		
			2001	1,112	318	28.6	286	89.9		
			2002	1,070	319	29.8	318	99.7		
			Sole	VIIhjk	1998	720	120	16.7	114	95.0
					1999	720	120	16.7	97	80.8
					2000	720	151	21.0	96	63.6
					2001	650	110	16.9	109	99.1
					2002	650	141	21.7	125	88.7
	Norway lobster	VII			1998	23,000	7,590	33.0	6,927	91.3
			1999	23,000	7,640	33.2	6,832	89.4		
			2000	21,000	6,965	33.2	5,568	79.9		
			2001	18,900	6,220	32.9	5,311	85.4		
			2002	17,790	5,526	31.1	5,111	92.5		
			Anglers	VII	1998	26,670	4,640	17.4	3,972	85.6
	1999	26,670			4,252	15.9	3,483	81.9		
	2000	23,000			3,990	17.3	3,109	77.9		
	2001	23,810			4,284	18.0	3,092	72.2		
	2002	18,600			3,876	20.8	3,540	91.3		
	Megrin	VII			1998	22,400	3,210	14.3	2,645	82.4
			1999	22,400	2,889	12.9	2,263	78.3		
			2000	17,920	2,634	14.7	2,260	85.8		
			2001	16,466	2,407	14.6	1,609	66.8		
			2002	13,350	2,124	15.9	1,830	86.2		
			Pollack (Lythe)	VII	1998	17,000	2,980	17.5	2,287	76.7
	1999	17,000			2,960	17.4	1,626	54.9		
	2000	17,000			2,960	17.4	1,711	57.8		
	2001	17,000			2,960	17.4	1,788	60.4		
	2002	17,000			2,934	17.3	1,961	66.8		
	Herring	VIIa(excl part)			1998	9,000	6,660	74.0	4,841	72.7
			1999	6,600	4,880	73.9	4,388	89.9		
			2000	6,600	3,960	60.0	2,003	50.6		
			2001	6,900	5,100	73.9	4,141	81.2		
2002			4,800	3,525	73.4	2,473	70.2			
Herring			VIIe,f	1998	1,000	500	50.0	389	77.8	
	1999	1,000		500	50.0	176	35.2			
	2000	1,000		500	50.0	239	47.8			
	2001	1,025		500	48.8	139	27.8			
	2002	1,000		500	50.0	167	33.4			
	Herring	VIIg,h,j,k,part a		1998	22,200	30	0.1	1	3.3	
1999			21,000	30	0.1	12	40.0			
2000			21,000	30	0.1	1	3.3			
2001			20,129	-	-	-	-			
2002			8,000	10	0.1	9	90.0			
Sprat			VIIde	1998	12,000	6,300	52.5	1,972	31.3	
	1999	12,000		6,300	52.5	3,557	56.5			
	2000	12,000		6,300	52.5	1,692	26.9			
	2001	12,000		6,300	52.5	1,334	21.2			
	2002	12,000		6,300	52.5	1,196	19.0			
	Norway	Cod		I, II (Norway)	1998	27,082	11,395	42.1	9,244	81.1
1999			19,870		9,845	49.5	8,916	90.6		
2000			16,150		7,607	47.1	7,619	100.2		
2001			16,350		7,708	47.1	7,080	91.9		
2002			16,355		7,699	47.1	7,629	99.1		
Haddock			I, II (Norway)		1998	2,500	1,616	64.6	1,076	66.6
		1999		1,700	895	52.6	607	67.8		
		2000		1,360	603	44.3	417	69.2		
		2001		1,850	1,060	57.3	781	73.7		
Saithe		I, II (Norway)	1998	4,000	285	7.1	244	85.6		
	1999		3,100	136	4.4	136	100.0			
	2000		3,000	302	10.1	306	101.3			
	2001		3,234	328	10.1	334	101.8			
	2002		3,240	294	9.1	257	87.4			
	Redfish		I, II (Norway)	1998	3,500	400	11.4	181	45.3	
1999		3,500		400	11.4	232	58.0			
2000		3,300		360	10.9	80	22.2			
2001		3,000</								

Table 18. continued

Area	Species	Sea area	Year	EU total allowable catch	UK quota		UK uptake	
					After exchanges	% of TAC	Tonnes	% of quota
Faroes	Cod/haddock	Vb (Faroes)	1998	500	430	86.0	381	88.6
			1999	500	450	90.0	422	93.8
			2000	500	445	89.0	440	98.9
			2001	500	455	91.0	446	98.0
			2002	500	430	86.0	420	97.7
	Saithe	Vb (Faroes)	1998	2,500	630	25.2	317	50.3
			1999	2,500	580	23.2	453	78.1
			2000	2,500	628	25.1	518	82.5
			2001	2,500	680	27.2	649	95.4
			2002	2,500	630	25.2	549	87.1
	Redfish	Vb (Faroes)	1998	7,000	75	1.1	23	30.7
			1999	7,000	75	1.1	31	41.3
			2000	7,000	375	5.4	144	38.4
			2001	7,000	275	3.9	151	54.9
			2002	7,000	120	1.7	86	71.7
	Ling/blue ling	Vb (Faroes)	1998	3,600	205	5.7	134	65.4
			1999	3,600	205	5.7	136	66.3
			2000	3,600	190	5.3	69	36.3
			2001	3,600	180	5.0	119	66.1
			2002	3,600	250	6.9	219	87.6
	Flatfish	Vb (Faroes)	1998	1,000	680	68.0	43	6.3
			1999	1,000	680	68.0	45	6.6
			2000	1,000	680	68.0	195	28.7
			2001	1,000	680	68.0	113	16.6
2002			1,000	680	68.0	187	27.5	
Other species	Vb (Faroes)	1998	760	180	23.7	140	77.8	
		1999	760	220	28.9	133	60.5	
		2000	760	180	23.7	171	95.0	
		2001	760	180	23.7	133	73.9	
		2002	760	180	23.7	132	73.3	
Blue whiting	Vb (Faroes)	1998	25,000	13,000	52.0	8,279	63.7	
		1999	25,000	11,000	44.0	6,346	57.7	
		2000	25,000	11,000	44.0	2,127	19.3	
		2001	25,000	4,944	19.8	0	0.0	
		2002	0	0	0.0	0	0.0	
Greenland Cod	V.XIV,NAFO1 (Greenland)	1998	31,000	5,640	18.2	149	2.6	
		1999	31,000	5,612	18.1	95	1.7	
		2000	31,000	5,640	18.2	1	0.0	
		2001	2,000	364	18.2	129	35.4	
		2002	2,000	364	18.2	5	1.4	

Area	Species	Sea area	Year	EU total allowable catch	UK quota		UK uptake	
					After exchanges	% of TAC	Tonnes	% of quota
Greenland	Redfish	NAFO1 (Greenland)	1998	5,500	105	1.9	-	-
			1999	5,500	105	1.9	-	-
			2000	5,500	105	1.9	-	-
			2001	5,500	0	0.0	-	-
			2002	5,500	105	1.9	-	-
	Redfish	V, XIV (Greenland)	1998	46,820	220	0.5	43	19.5
			1999	46,820	520	1.1	68	13.1
			2000	48,320	220	0.5	45	20.5
			2001	25,000	175	0.7	179	102.3
			2002	26,500	175	0.7	36	20.6
	Greenland halibut	V, XIV (Greenland)	1998	4,250	210	4.9	190	90.5
			1999	4,250	233	5.5	226	97.0
			2000	5,430	268	4.9	268	100.0
			2001	4,250	212	5.0	100	47.2
			2002	5,455	354	6.5	201	56.8
	Capelin	V, XIV (Greenland)	1998	na	na	na	na	na
			1999	48,945	na	na	na	na
			2000	98,945	na	na	na	na
			2001	28,375	na	na	na	na
			2002	95,985	na	na	na	na
Roundnose Grenadier	V.XIV,NAFO1 (Greenland)	1998	4,650	250	5.4	na	na	
		1999	4,650	0	0.0	na	na	
		2000	4,935	250	5.1	0	0.0	
		2001	1,715	86	5.0	2	2.3	
		2002	2,000	86	4.3	1	1.2	
Iceland	Redfish	Va (Iceland)	1998	3,000	1,160	38.7	na	na
			1999	3,000	1,160	38.7	na	na
			2000	3,000	1,160	38.7	819	70.6
			2001	3,000	1,460	48.7	608	41.6
			2002	3,000	1,310	43.7	372	28.4
NEAFC	Redfish		1998	27,000	44	0.2	0	0.0
			1999	27,000	44	0.2	0	0.0
			2000	20,780	35	0.2	0	0.0
			2001	13,734	23	0.2	2	8.7
			2002	13,883	171	1.2	4	2.3

Source : EU Commission

UK figures are as reported to the EC Commission in 2002. This data, however, is still provisional and does not take into account flexibility arrangements, or small adjustments required to UK landings abroad by other member states.

Chart 7. UK percentage uptake of main quota stocks, 2002

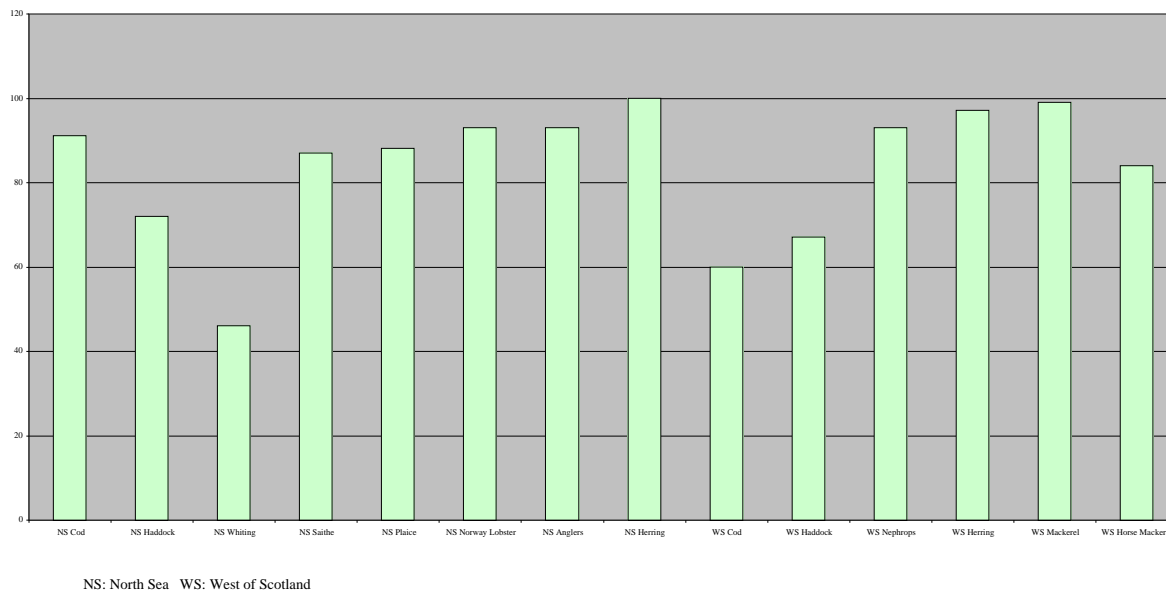


Table 19. Fixed quota units (thousands), by sea area and country, 1st January 2003

	North Sea (1)			West of Scotland (2)			Area VII		
	Scottish vessels	Other UK vessels	Held in PO (3) pools	Scottish vessels	Other UK vessels	Held in PO (3) pools	Scottish vessels	Other UK vessels	Held in PO (3) pools
Demersal	1291.5	372.1	588.0	245.4	80.6	103.9	25.0	185.4	53.6
Pelagic	652.4	175.4	43.4	2669.8	702.7	32.8	0.0	25.9	0.8
Shellfish	62.5	19.2	35.9	59.4	14.7	39.9	3.9	42.3	12.9
Total	2006.4	566.7	667.3	2974.6	798.0	176.6	28.9	253.6	67.3

(1) includes southern North Sea herring (2) includes western hake (3) Producer Organisations

Table 20. Liveweight and value of landings into the UK by UK vessels , by main species (over £5m value in 2002) and country of landing, 1998 to 2002

		Tonnes (thousand)					Value (£ million)				
		1998	1999	2000	2001	2002	1998	1999	2000	2001	2002
		UK vessels into: Scotland	Cod	39.8	26.1	23.3	17.4	17.0	44.2	35.3	32.9
	Haddock	76.3	66.4	46.3	36.5	46.8	51.9	54.4	46.9	31.2	30.6
	Ling	8.2	7.2	6.5	5.9	6.0	6.9	7.1	6.6	6.5	6.6
	Monks	15.4	12.1	11.9	11.8	10.1	32.2	28.4	27.5	26.5	21.4
	Whiting	20.1	20.3	19.5	12.3	8.8	10.4	11.3	12.1	8.3	5.2
	Herring	33.7	42.3	34.5	36.0	38.2	4.0	4.6	3.4	8.6	6.2
	Mackerel	40.2	33.3	43.5	54.9	89.5	17.8	7.0	10.4	21.1	40.3
	Crabs	10.9	9.6	12.3	11.1	10.1	11.7	11.0	13.9	12.9	11.9
	Norway lobster	20.0	21.8	20.6	20.3	21.4	43.2	57.5	48.0	53.1	56.4
	Scallops	9.7	8.5	8.8	9.8	9.1	15.6	14.3	13.9	17.2	14.7
	Other	94.8	102.1	80.5	73.7	59.3	53.6	51.2	45.9	47.9	42.5
	Total	369.1	349.7	307.7	289.7	316.3	291.6	282.1	261.5	256.7	259.6
England and Wales	Cod	30.7	19.0	12.8	9.9	7.6	32.4	24.8	16.3	12.6	9.4
	Lemon Soles	2.5	1.9	1.8	1.8	1.4	6.6	5.4	5.3	5.8	5.1
	Monks	2.8	3.1	2.7	3.1	2.8	5.9	6.6	5.8	7.0	6.0
	Plaice	7.2	6.6	6.3	5.4	4.3	9.2	9.5	8.3	7.4	5.5
	Sole	2.0	2.0	1.8	2.1	2.1	13.8	13.6	11.1	13.1	12.6
	Crabs	16.1	13.1	12.7	13.5	12.7	20.4	15.7	13.6	14.7	13.7
	Lobsters	0.9	1.3	0.8	0.8	0.8	8.1	9.2	7.7	7.8	8.1
	Scallops	9.7	10.2	10.3	9.1	9.2	13.9	14.2	16.1	11.9	12.6
	Other	86.4	79.8	85.2	99.8	88.5	61.5	61.7	59.2	67.7	64.4
	Total	158.2	137.2	134.8	145.5	129.4	172.0	160.6	143.2	147.9	137.4
Northern Ireland	Norway lobster	6.1	6.2	5.0	4.8	4.6	9.2	10.5	7.9	8.5	7.5
	Other	18.2	13.5	17.1	18.3	15.3	10.8	11.0	9.3	10.4	10.1
	Total	24.3	19.7	22.1	23.1	19.9	20.0	21.5	17.2	18.9	17.6
UK	Cod	72.7	46.7	37.0	28.1	25.7	79.4	62.6	50.6	37.4	35.0
	Dogfish	7.4	6.8	7.4	7.1	5.8	5.5	5.2	5.9	6.4	5.4
	Haddock	82.8	71.4	50.2	42.3	51.9	57.1	59.3	51.2	36.3	34.6
	Hake	2.5	3.9	3.5	2.2	2.1	5.1	7.8	7.0	5.3	5.6
	Ling	10.0	8.8	7.5	6.9	7.2	8.3	8.5	7.5	7.4	7.7
	Lemon sole	4.7	4.5	4.0	3.6	2.3	10.6	10.4	10.0	9.9	7.3
	Monks	18.5	15.5	14.8	15.1	13.1	38.5	35.5	33.6	33.8	27.9
	Megrim	5.3	5.0	5.0	4.3	4.0	8.6	9.4	8.9	7.0	8.0
	Plaice	11.5	9.6	8.5	7.7	5.9	13.2	12.6	9.8	9.0	6.6
	Skates and rays	6.8	5.6	5.5	5.5	5.3	6.4	5.4	5.7	5.7	5.3
	Sole	2.0	2.0	1.8	2.1	2.1	14.0	13.8	11.2	13.2	12.8
	Whiting	26.7	25.4	23.2	15.1	11.4	13.4	13.9	14.4	9.9	6.6
	Herring	39.5	45.3	39.5	43.8	42.5	4.9	5.1	4.1	10.5	6.9
	Mackerel	54.4	41.3	54.6	63.9	96.6	21.8	9.6	13.8	23.9	42.7
	Crabs	27.2	23.0	25.6	25.0	23.3	32.3	27.0	28.0	27.8	26.0
	Lobsters	1.6	1.8	1.2	1.1	1.2	14.5	14.9	12.5	11.4	11.7
	Norway lobster	28.6	31.0	28.3	28.4	28.4	56.8	74.3	60.7	68.4	68.8
	Scallops	20.1	19.2	19.6	19.5	18.8	30.2	29.2	30.7	29.9	28.0
	Others	129.3	139.8	127.4	136.6	118.8	62.9	59.7	56.4	70.5	68.7
	Total	551.7	506.6	464.6	458.3	466.4	483.5	464.2	422.0	423.7	415.6

Table 21. Liveweight and value of landings into Scotland by UK vessels, by main species (value over £0.1m in 2002, 1998 to 2002)

	Tonnes					Value (£ 000)					£ per tonne (standard weight)				
	1998	1999	2000	2001	2002	1998	1999	2000	2001	2002	1998	1999	2000	2001	2002
Blue ling	1,923	3,705	2,375	4,243	2,880	1,374	2,945	2,039	4,099	2,874	822	914	987	1,111	1,147
Catfish	634	628	740	587	424	932	914	1,023	827	676	1,735	1,718	1,631	1,661	1,879
Cod	39,807	26,098	23,305	17,383	17,025	44,247	35,334	32,945	23,558	23,814	1,301	1,584	1,654	1,586	1,637
Dogfish	4300	3,183	3,768	3,492	3,357	3,237	2,373	3,059	3,184	3,144	1,031	1,021	1,112	1,249	1,283
Forkbeard	121	173	270	433	407	79	125	198	324	288	737	815	826	845	800
Greenland halibut	1,370	1,104	895	917	1,002	2,395	1,841	1,500	1,621	1,754	1,889	1,801	1,811	1,909	1,891
Grenadiers	320	1,038	598	1,020	758	176	676	325	800	543	550	651	544	784	717
Gurnards	76	31	108	194	309	24	13	29	83	143	317	421	272	427	463
Haddock	76,348	66,359	46,347	36,458	46,842	51,891	54,433	46,946	31,167	30,642	788	952	1,175	992	759
Hake	1,137	1,362	1,252	976	677	1,510	1,744	1,954	2,320	1,744	1,541	1,485	1,811	2,757	2,987
Halibut	169	226	172	134	181	677	666	562	509	659	4,314	3,186	3,519	4,120	3,931
Lemon sole	2,118	2,576	2,184	1,791	895	4,038	4,944	4,650	4,072	2,162	1,983	1,996	2,214	2,365	2,512
Ling	8,199	7,190	6,480	5,903	6,026	6,931	7,150	6,624	6,512	6,560	972	1,144	1,175	1,269	1,252
Megrim	3,615	3,241	3,183	2,875	2,531	4,900	5,148	4,587	4,231	4,195	1,423	1,668	1,513	1,545	1,740
Monks	15,374	12,139	11,864	11,847	10,086	32,207	28,435	27,461	26,460	21,432	2,676	2,970	2,928	2,811	2,686
Mullet	2	2	1	15	39	3	5	3	39	133	1,758	2,733	3,274	2,875	3,808
Other flatfish	193	163	157	170	138	283	220	210	231	187	1,463	1,351	1,333	1,354	1,351
Other or mixed demersal	12,779	7,887	10,523	2,280	1,960	1,922	1,236	1,155	886	711	150	160	111	410	377
Plaice	4,184	2,813	2,138	2,089	1,468	3,891	2,961	1,531	1,506	1,000	995	1,126	766	771	729
Pollack	794	660	874	795	648	743	716	982	914	718	1,067	1,236	1,281	1,310	1,262
Redfish	1,165	1,306	1,096	1,233	1,124	1,003	1,125	914	1,068	1,128	861	862	834	866	1,003
Roes	144	120	110	74	75	178	148	156	123	134	1,232	1,239	1,423	1,650	1,795
Saithe	8,462	8,211	8,629	8,330	8,493	4,141	3,835	3,433	3,614	3,540	582	556	473	516	496
Scabbardfish	156	200	399	669	971	187	269	389	771	1,055	1,194	1,347	975	1,152	1,086
Skates & Rays	2,942	2,430	2,466	2,247	2,080	2,107	1,812	2,030	1,826	1,587	809	843	930	918	862
Turbot	208	150	154	117	96	843	595	458	571	502	4,328	4,240	3,186	5,207	5,573
Tusk	599	770	962	807	639	371	555	637	585	474	700	815	748	819	838
Whiting	20,076	20,334	19,490	12,266	8,849	10,382	11,335	12,073	8,266	5,215	584	630	700	761	666
Witches	1,538	1,822	2,145	2,440	2,036	1,298	1,826	2,071	2,423	2,294	878	1,042	1,004	1,033	1,172
Total demersal	208,754	175,919	152,685	121,788	122,019	181,971	173,377	159,943	132,591	119,307	1,003	1,133	1,201	1,258	1,132
Argentines	89	576	2,311	3,581	4,356	31	174	392	751	826	347	302	170	210	190
Blue whiting	26,955	38,432	17,685	20,023	8,047	1,597	1,476	737	936	532	59	38	42	47	66
Herring	33,660	42,290	34,452	35,957	38,231	4,039	4,589	3,425	8,614	6,219	120	109	99	240	163
Horse mackerel	2,167	590	988	634	604	300	83	134	64	106	138	141	136	101	176
Mackerel	40,213	33,332	43,542	54,947	89,515	17,829	6,998	10,443	21,084	40,256	443	210	240	384	450
Sprats	2,759	8,611	4,238	1,297	2,657	334	1,043	495	152	277	121	121	117	117	104
Other pelagic	79	55	1	0	0	20	47	2	0	0	253	855	2,000	0	0
Total pelagic	105,922 </														

Table 22. Liveweight and value of landings into Scottish ports by UK vessels, by landing district and species type, 1998 to 2002

		1998		1999		2000		2001		2002	
		Tonnes	Value (£000)	Tonnes	Value (£000)	Tonnes	Value (£000)	Tonnes	Value (£000)	Tonnes	Value (£000)
Eyemouth	Demersal	4,331	3,442	3,525	3,689	2,218	2,403	1,682	1,604	2,825	2,487
	Pelagic	0	0	0	0	1	1	0	0	-	-
	Shellfish	1,562	3,360	1,714	4,060	1,505	3,186	1,054	2,288	998	2,209
	Total	5,893	6,802	5,240	7,749	3,725	5,590	2,737	3,893	3,823	4,696
Pittenweem	Demersal	1,202	1,006	512	540	66	72	133	116	80	62
	Pelagic	1	1	0	0	-	-	-	-	-	-
	Shellfish	1,450	2,361	1,392	2,540	1,328	2,157	1,003	1,769	942	1,836
	Total	2,653	3,368	1,903	3,080	1,394	2,229	1,137	1,884	1,021	1,898
Aberdeen	Demersal	31,031	27,854	22,767	22,610	17,103	18,981	13,001	13,103	15,373	13,333
	Pelagic	8,293	855	14,715	615	8781	370	8,378	387	982	58
	Shellfish	1,334	2,355	1,887	4,088	1,117	2,343	1,153	2,559	1,206	2,701
	Total	40,658	31,064	39,369	27,312	27,002	21,694	22,532	16,049	17,561	16,093
Peterhead	Demersal	81,251	70,992	66,673	64,785	55,305	60,494	39,697	43,823	37,511	36,881
	Pelagic	27,847	5,870	28,427	4,235	30,677	4,595	35,450	9,887	53,389	17,397
	Shellfish	2,318	5,723	3,396	9,766	1,953	5,474	1,354	4,284	2,022	5,540
	Total	111,415	82,585	98,496	78,787	87,935	70,563	76,501	57,994	92,922	59,818
Fraserburgh	Demersal	15,031	12,126	13,867	12,355	11,812	11,918	10,579	10,586	12,896	9,960
	Pelagic	11,195	3,956	14,500	2,235	17,078	2,876	23,151	6,965	16,432	5,401
	Shellfish	5,807	10,941	5,863	15,364	6,002	12,161	6,665	13,977	6,657	14,882
	Total	32,032	27,024	34,231	29,954	34,892	26,955	40,395	31,529	35,985	30,244
Buckie	Demersal	2,985	3,055	1,282	1,518	1,304	1,525	1,015	1,071	1,742	1,730
	Pelagic	-	-	-	-	17	8	8	3	17	5
	Shellfish	1,560	2,009	1,084	1,813	1,620	2,572	1,541	2,620	1,191	2,122
	Total	4,545	5,064	2,365	3,332	2,940	4,105	2,563	3,695	2,950	3,856
Wick	Demersal	15,363	17,012	13,487	16,761	15,065	18,633	14,806	17,487	16,070	17,555
	Pelagic	59	23	322	119	238	71	190	60	94	28
	Shellfish	3,642	4,540	4,271	5,649	5,433	6,112	5,322	6,352	4,886	6,107
	Total	19,064	21,575	18,081	22,529	20,736	24,815	20,318	23,899	21,051	23,690
Orkney	Demersal	431	390	571	636	295	303	160	126	71	30
	Pelagic	3	2	20	8	2	0	0	0	1	0
	Shellfish	3,289	4,651	3,003	4,339	2,998	4,024	2,903	4,040	2,690	3,850
	Total	3,723	5,043	3,594	4,983	3,294	4,327	3,063	4,166	2,762	3,881
Shetland	Demersal	22,194	10,897	17,300	11,566	19,956	12,185	12,481	12,777	10,719	9,769
	Pelagic	48,880	11,599	53,678	5,736	40,178	6,818	46,355	13,789	69,116	24,860
	Shellfish	1,774	2,143	1,674	2,027	1,571	1,589	1,234	1,634	1,137	1,695
	Total	72,847	24,639	72,651	19,330	61,705	20,592	60,070	28,201	80,971	36,323
Stornoway	Demersal	1,127	742	942	647	581	398	624	437	593	412
	Pelagic	52	22	0	0	-	-	3	2	0	0
	Shellfish	5,043	9,511	4,160	8,399	3,455	7,500	3,741	9,079	3,714	8,650
	Total	6,222	10,275	5,103	9,045	4,036	7,898	4,368	9,518	4,307	9,062
Kinlochbervie	Demersal	15,323	15,018	10,954	12,726	9,152	11,412	8,106	9,563	6,852	8,146
	Pelagic	4	1	2	1	3	0	70	14	154	37
	Shellfish	314	350	438	577	472	636	480	795	616	1,319
	Total	15,640	15,368	11,394	13,304	9,627	12,049	8,655	10,372	7,622	9,502
Lochinver	Demersal	6,356	7,450	7,614	8,642	6,911	8,411	7,849	10,014	6,435	8,036
	Pelagic	2	0	14	4	-	-	89	26	71	18
	Shellfish	560	1,327	700	2,013	821	2,092	671	2,004	937	2,737
	Total	6,917	8,777	8,328	10,659	7,732	10,503	8,609	12,044	7,443	10,791
Ullapool	Demersal	3,802	4,175	5,016	5,681	5,196	5,286	5,962	6,192	6,479	6,909
	Pelagic	5,133	1,113	1,879	213	851	159	1,179	251	202	69
	Shellfish	1,484	2,610	1,710	3,125	1,737	3,091	1,883	3,836	1,810	4,199
	Total	10,419	7,899	8,606	9,018	7,784	8,536	9,025	10,279	8,491	11,176
Mallaig	Demersal	5,346	5,180	8,954	8,636	5,477	5,410	3,270	3,259	2,298	1,856
	Pelagic	3,501	598	5,264	696	3,827	513	1,409	194	2,662	275
	Shellfish	5,094	10,128	4,532	11,003	4,170	7,890	3,573	7,485	3,073	6,290
	Total	13,941	15,907	18,749	20,335	13,474	13,813	8,251	10,937	8,032	8,421
Oban	Demersal	223	186	230	244	262	278	537	547	627	565
	Pelagic	304	34	3,634	405	1,054	162	0	0	-	-
	Shellfish	4,008	6,850	2,767	5,340	4,341	7,339	4,624	8,300	4,321	7,662
	Total	4,535	7,070	6,630	5,989	5,657	7,779	5,161	8,846	4,948	8,228
Campbeltown	Demersal	777	540	529	501	418	396	290	254	245	208
	Pelagic	638	74	1,341	130	201	29	153	21	185	23
	Shellfish	5,264	8,939	3,453	6,710	5,778	8,568	5,062	8,493	4,086	7,338
	Total	6,679	9,553	5,323	7,342	6,397	8,993	5,505	8,768	4,516	7,570
Ayr	Demersal	1,982	1,905	1,697	1,841	1,242	1,469	1,149	1,128	832	981
	Pelagic	11	3	89	13	27	4	2	1	1	0
	Shellfish	9,930	7,723	7,869	7,499	6,095	5,210	6,840	5,753	8,428	6,389
	Total	11,923	9,631	9,655	9,353	7,364	6,683	7,990	6,881	9,261	7,370
Portree	Demersal	-	-	-	-	323	371	449	503	373	387
	Pelagic	-	-	-	-	283	22	0	0	105	45
	Shellfish	-	-	-	-	1,443	4,020	2,392	7,253	2,121	6,596
	Total	-	-	-	-	2,048	4,413	2,841	7,756	2,599	7,028
Total	Demersal	208,754	181,971	175,919	173,377	152,685	159,943	121,788	132,590	122,019	119,307
	Pelagic	105,922	24,150	123,886	14,410	103,217	15,628	116,438	31,600	143,411	48,217
	Shellfish	54,433	85,521	49,912	94,313	51,840	85,966	51,495	92,521	50,835	92,123
	Total	369,108	291,642	349,717	282,100	307,741	261,536	289,721	256,711	316,265	259,647

Table 23. Liveweight and value of landings into Scotland by UK vessels, by landing district and main (1) species, 2002

	Eyemouth	
	Tonnes	£'000
Cod	138	178
Dogfish - Spur	54	60
Gurnards - Red	152	101
Gurnards Other	21	8
Haddock	1995	1493
Lemon Sole	85	170
Mullet - Red	39	131
Other or mixed Demersal	56	51
Plaice	69	52
Whiting	137	90
Other demersal	78	152
Total demersal	2,825	2,487
Brown Crabs	41	40
Norway Lobster	737	1786
Scallops	22	34
Squid	184	249
Other shellfish	14	100
Total shellfish	998	2209
Total landings	3,823	4,696

	Pittenweem	
	Tonnes	£'000
Haddock	51	37
Other demersal	29	26
Total demersal	80	62
Brown Crabs	56	50
Lobsters	32	303
Norway Lobster	818	1428
Other shellfish	36	54
Total shellfish	942	1836
Total landings	1021	1898

	Aberdeen	
	Tonnes	£'000
Blue Ling	44	52
Catfish	66	106
Cod	2494	3379
Dogfish - Spur	53	50
Haddock	8972	6027
Hake	54	83
Halibut	36	143
Lemon Sole	164	459
Ling	333	343
Megrim	80	101
Monks	471	970
Plaice	183	144
Pollack (Lythe)	88	93
Saithe (Coalfish)	962	354
Skates & Rays	90	61
Tusk	22	15
Whiting	1104	737
Witches	89	95
Other demersal	68	122
Total demersal	15,373	13,333
Blue whiting	977	56
Other pelagic	5	1
Total pelagic	982	58
Brown crabs	181	152
Norway lobster	687	1,756
Other Molluscs	20	34
Scallops	220	439
Squid	58	104
Velvet crabs	25	37
Other shellfish	16	178
Total shellfish	1,206	2,701
Total landings	17,561	16,093

	Peterhead	
	Tonnes	£'000
Blue Ling	117	106
Catfish	200	328
Cod	7709	11296
Dogfish - Spur	95	94
Greenland Halibut	59	104
Haddock	16128	10385
Hake	137	207
Halibut	66	231
Lemon Sole	323	899
Ling	1267	1377
Megrim	387	648
Monks	2540	5495
Other flatfish	78	115
Plaice	443	373
Pollack	332	385
Redfish	72	69
Roes	27	44
Roundnose Grenadier	23	11
Saithe	3231	1403
Scabbardfish	43	39
Skates & Rays	200	179
Turbot	31	168
Tusk	85	66
Whiting	3471	2344
Witches	384	464
Other demersal	61	53
Total demersal	37,511	36,881
Argentines	3943	719
Blue Whiting	466	25
Herring	16255	2708
Horse Mackerel	543	94
Mackerel	32183	13851
Total pelagic	53,389	17,397
Norway Lobster	1771	5109
Scallops	132	244
Squid	98	171
Other shellfish	22	17
Total shellfish	2,022	5,540
Total landings	92,922	59,818

	Fraserburgh	
	Tonnes	£'000
Blue Ling	122	130
Catfish	50	80
Cod	1473	1672
Dogfish - Spur	94	88
Greenland Halibut	26	47
Haddock	5749	2268
Hake	21	23
Halibut	30	105
Lemon Sole	125	223
Ling	407	451
Megrim	124	181
Monks	1497	3181
Other flatfish	22	23
Plaice	182	79
Pollack (Lythe)	28	32
Redfish	74	72
Saithe (Coalfish)	598	204
Skates & Rays	66	30
Turbot	24	136
Tusk	30	20
Whiting	1598	474
Witches	391	296
Other demersal	167	146
Total demersal	12,896	9,960
Argentines	34	10
Herring	4958	742
Mackerel	10828	4601
Whiting - Blue	610	49
Other pelagic	2	0
Total pelagic	16,432	5,401
Norway lobster	5962	13920
Squid	285	479
Brown Crabs	222	239
Scallops	112	170
Pink Shrimps	43	30
Other shellfish	33	45
Total shellfish	6,657	14,882
Total landings	35,985	30,244

	Buckie	
	Tonnes	£'000
Cod	204	286
Dogfish - Spur	116	173
Haddock	564	295
Ling	227	248
Megrim	64	110
Monks	147	296
Plaice	21	9
Saithe	41	16
Skates & Rays	46	39
Tusk	92	69
Whiting	97	45
Witches	23	20
Other demersal	102	123
Total demersal	1,742	1,730
Total pelagic	17	5
Brown Crabs	26	21
Norway Lobster	475	1,036
Scallops	462	716
Squid	158	249
Velvet Crabs	62	80
Other shellfish	8	18
Total shellfish	1,191	2,122
Total landings	2,950	3,856

	Wick	
	Tonnes	£'000
Anglerfish (Monks)	1648	3409
Cod	1924	2750
Dogfish - Portugese	30	27
Dogfish - Spur	517	675
Forkbeard	54	36
Gurnards - Red	100	17
Haddock	4699	3844
Hake	28	42
Halibut - Greenland	603	1046
Ling	1017	1113
Ling-Blue	700	688
Megrim	499	849
Plaice	226	152
Pollack (Lythe)	53	61
Redfish	463	483
Roundnose Grenadier	75	76
Saithe (Coalfish)	1930	911
Scabbardfish - black	62	69
Skates & Rays	508	388
Sole - Lemon	73	162
Tusk	66	47
Whiting	593	431
Witches	83	68
Other demersal	119	210
Total demersal	16,070	17,555
Argentines	90	27
Other pelagic	4	1
Total pelagic	94	28
Brown Crabs	2816	3475
Lobsters	46	504
Mussels	734	192
Norway Lobster	398	890
Scallops	427	559
Squid	104	197
Velvet Crabs	117	179
Whelks	229	98
Other pelagic	14	13
Total shellfish	4,886	6,107
Total landings	21,051	23,690

	Orkney	
	Tonnes	£'000
Saithe	27	13
Other demersal	44	17
Total demersal	71	30
Total pelagic	1	0
Brown Crabs	995	946
Cockles	86	60
Green Crabs	273	136
Lobsters	87	913
Periwinkles	66	84
Queen Scallops	53	45
Scallops	188	426
Velvet Crabs	640	1038
Whelks	276	117
Other shellfish	25	86
Total shellfish	2,690	3,850
Total landings	2,762	3,881

	Shetland	
	Tonnes	£'000
Catfish	30	43
Cod	1761	2418
Dogfish - Spur	87	116
Greenland Halibut	22	36
Haddock	3222	2083
Hake	29	34
Lemon Sole	44	77
Ling	493	502
Megrim	160	224
Monks	1338	2762
Plaice	158	84
Pollack	72	77
Redfish	146	141
Saithe	742	237
Sandeels	1174	55
Skates & Rays	155	83
Tusk	34	20
Whiting	908	609
Witches	54	44
Other demersal	89	124
Total demersal	10,719	9,769
Blue Whiting	5993	402
Herring	16823	2749
Norway Mackerel	58	12
Mackerel	46226	21694
Other pelagic	15	2
Total pelagic	69,116	24,860
Brown Crabs	191	175
Norway Lobster	198	571
Scallops	559	771
Squid	66	105
Whelks	101	57
Other shellfish	23	15
Total shellfish	1,137	1,695
Total landings	80,971	36,323

	Stornoway	
	Tonnes	£'000
Cod	33	32
Dogfish - Spur	156	131
Haddock	102	46
Monkfish	49	81
Sandeels	70	0
Skates & Rays	57	36
Whiting	33	11
Witches	25	15
Other demersal	69	59
Total demersal	593	412
Total pelagic	0	0
Brown Crabs	766	714
Lobsters	71	729
Norway Lobster	1738	5142
Scallops	804	1538
Velvet Crabs	298	449
Other shellfish	37	78
Total shellfish	3,714	8,650
Total landings	4,307	9,062

	Lochinver	
	Tonnes	£'000
Blue Ling	478	484
Bluemouth	44	43
Cod	201	271
Dogfish - Portugese	81	46
Dogfish - Spur	160	94
Forkbeard	100	88
Greenland Halibut	59	101
Haddock	863	608
Hake	239	1074
Ling	1440	1598
Megrim	228	481
Monks	505	1048
Orange Roughy	47	50
Redfish	90	83
Roundnose Grenadier	276	178
Saithe	198	86
Scabbardfish	285	289
Skates & Rays	142	100
Tusk	141	117
Whiting	78	54
Witches	671	1007
Other demersal	110	134
Total demersal	6,435	8,036
Argentines	71	18
Total pelagic	71	18
Norway lobster	756	2411
Scallops	99	157
Squid	51	108
Other shellfish	31	61
Total shellfish	937	2,737
Total landings	7,443	10,791

(1) liveweight landings of 20 tonnes or more.

Table 23. continued

	Kinlochbervie	
	Tonnes	£'000
Blue Ling	508	546
Cod	558	828
Dogfish - Portugese	25	19
Dogfish - Spur	134	147
Forkbeard	79	43
Greenland Halibut	107	221
Haddock	1819	1346
Hake	44	58
Lemon Sole	26	55
Ling	271	292
Megrims	623	1032
Monks	1153	2573
Plaice	111	58
Redfish	142	141
Roundnose Grenadier	53	29
Saithe	364	128
Scabbardfish - black	73	84
Skates & Rays	305	198
Tusk	82	51
Whiting	258	145
Witches	40	35
Other demersal	78	115
Total demersal	6,852	8,146
Argentines	154	37
Other pelagic	0	0
Total pelagic	154	37
Brown Crabs	316	351
Norway Lobster	211	763
Squid	53	70
Other shellfish	35	135
Total shellfish	616	1,319
Total landings	7,622	9,502

	Ullapool	
	Tonnes	£'000
Blue Ling	799	769
Cod	228	361
Dogfish - Portugese	1003	678
Dogfish - Spur	118	118
Forkbeard	134	99
Greenland Halibut	127	198
Haddock	1254	1262
Ling	481	550
Megrims	150	280
Monkfish	459	1057
Redfish	116	111
Roundnose Grenadier	303	218
Saithe	352	162
Scabbardfish	465	525
Sharks	40	34
Skates & Rays	132	119
Tusk	75	60
Whiting	77	54
Witches	70	82
Other demersal	96	172
Total demersal	6,479	6,909
Argentines	32	7
Mackerel	159	60
Other pelagic	11	2
Total pelagic	202	69
Brown Crabs	695	877
Norway Lobster	734	2649
Red Crabs	100	144
Scallops	217	359
Squid	38	74
Velvet Crabs	22	31
Other shellfish	5	65
Total shellfish	1,810	4,199
Total landings	8,491	11,176

	Mallaig	
	Tonnes	£'000
Cod	111	129
Conger Eels	21	7
Dogfish - Spur	243	214
Haddock	747	420
Hake	34	42
Ling	34	30
Megrims	171	218
Monks	191	373
Saithe	26	12
Skates & Rays	136	78
Whiting	337	125
Witches	186	149
Other demersal	63	59
Total demersal	2,298	1,856
Herring	87	7
Sprats	2575	268
Other pelagic	0	0
Total pelagic	2,662	275
Brown Crabs	23	30
Norway Lobster	1709	4147
Scallops	1290	2005
Velvet Crabs	32	57
Other shellfish	19	51
Total shellfish	3,073	6,290
Total landings	8,032	8,421

	Portree	
	Tonnes	£'000
Blue Ling	77	65
Haddock	106	65
Megrims	25	46
Monks	43	90
Other demersal	122	121
Total demersal	373	387
Mackerel	105	45
Total pelagic	105	45
Brown Crabs	192	287
Norway Lobster	1143	5058
Scallops	626	956
Squid	41	102
Velvet Crabs	100	127
Other shellfish	20	67
Total shellfish	2,121	6,596
Total	2,599	7,028

	Oban	
	Tonnes	£'000
Dogfish - Spur	115	174
Haddock	244	154
Plaice	22	10
Skates & Rays	82	96
Whiting	89	47
Other demersal	76	84
Total demersal	627	565
Brown Crabs	1037	992
Green Crabs	22	11
Lobsters	29	301
Norway Lobsters	621	2450
Queen Scallops	24	7
Scallops	2098	3145
Velvet Crabs	440	715
Whelks	43	18
Other shellfish	7	23
Total shellfish	4321	7662
Total landings	4948	8228

	Campbeltown	
	Tonnes	£'000
Cod	61	57
Haddock	109	92
Other demersal	75	58
Total demersal	245	208
Herring	96	11
Sprats	83	9
Other pelagic	6	3
Total pelagic	185	23
Brown Crabs	121	117
Norway Lobster	2,349	5,090
Periwinkles	33	33
Queen Scallops	371	177
Scallops	836	1,391
Velvet Crabs	177	306
Whelks	164	72
Other shellfish	34	153
Total shellfish	4,086	7,338
Total	4,516	7,570

	Ayr	
	Tonnes	£'000
Cod	81	111
Dogfish - Other	98	79
Dogfish - Spur	95	109
Haddock	207	210
Hake	45	116
Skates & Rays	135	159
Whiting	44	35
Other demersal	127	162
Total demersal	832	981
Other pelagic	1	0
Total pelagic	1	0
Norway Lobster	1045	2,194
Queen Scallops	6310	2,323
Scallops	1033	1,800
Other shellfish	41	72
Total shellfish	8428	6,389
Total landings	9261	7,370

	All ports	
	Tonnes	£'000
Blue Ling	2880	2874
Bluemouth	46	46
Catfish	424	676
Cod	17025	23814
Conger Eels	71	37
Dabs	32	20
Dogfish - Other	98	79
Dogfish - Portugese	1159	786
Dogfish - Spotted	38	9
Dogfish - Spur	2062	2271
Forkbeard	407	288
Greenland Halibut	1002	1754
Gurnards - Red	265	127
Gurnards Other	27	9
Haddock	46842	30642
Hake	677	1744
Halibut	181	659
Lemon Sole	895	2162
Ling	6026	6560
Megrims	2531	4195
Monkfish	10086	21432
Mullet - Red	39	132
Orange Roughy	55	60
Other flatfish	138	187
Plaice	1468	1000
Pollack	648	718
Redfish	1124	1128
Roes	75	134
Roundnose Grenadier	752	539
Saithe	8493	3540
Sandeels	1249	55
Scabbardfish	970	1054
Sharks	74	72
Skates & Rays	2080	1587
Turbot	96	502
Tusk	639	474
Whiting	8849	5215
Witches	2036	2294
Other demersal	457	433
Total demersal	122,019	119,307
Argentines	4356	826
Blue Whiting	8047	532
Herring	38231	6219
Horse Mackerel	604	106
Mackerel	89515	40256
Sprats	2657	277
Other pelagic	0	0
Total pelagic	143,411	48,217
Brown Crabs	7693	8481
Cockles	98	71
Green Crabs	349	176
Lobsters	328	3426
Mussels	735	193
Norway Lobster	21359	56448
Other Molluscs	21	35
Periwinkles	108	126
Pink Shrimps	59	42
Queen Scallops	6766	2561
Razor Fish	33	82
Red Crabs	100	144
Scallops	9145	14757
Squid	1165	1968
Velvet Crabs	1986	3128
Whelks	856	376
Other shellfish	34	109
Total shellfish	50,835	92,123
Total landings	316,265	259,647

Chart 8. Liveweight landings into Scotland by UK vessels, by species type, 1962 to 2002

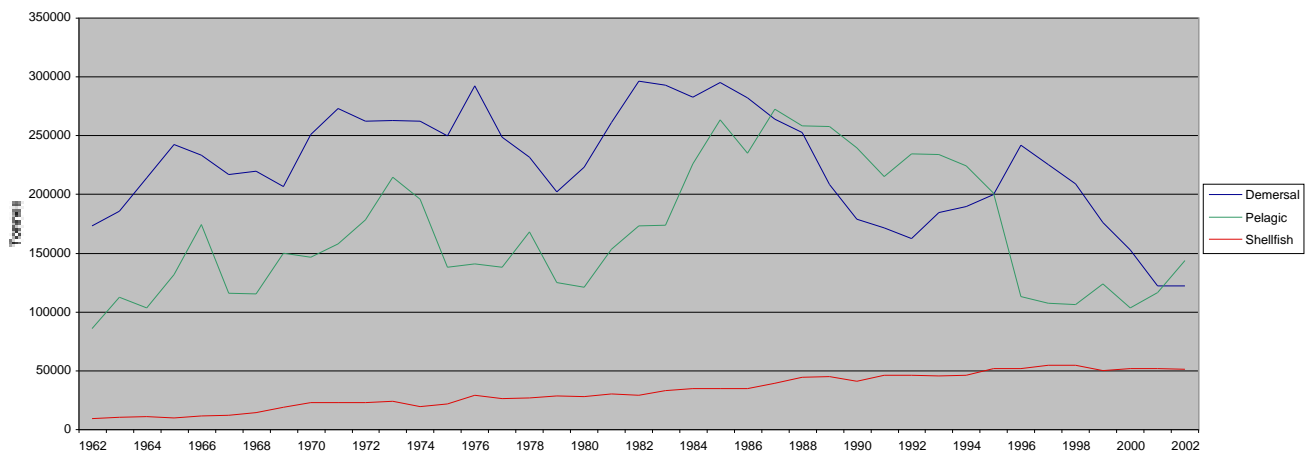


Chart 9. Average prices of landings into Scotland, by species type and month, 2002

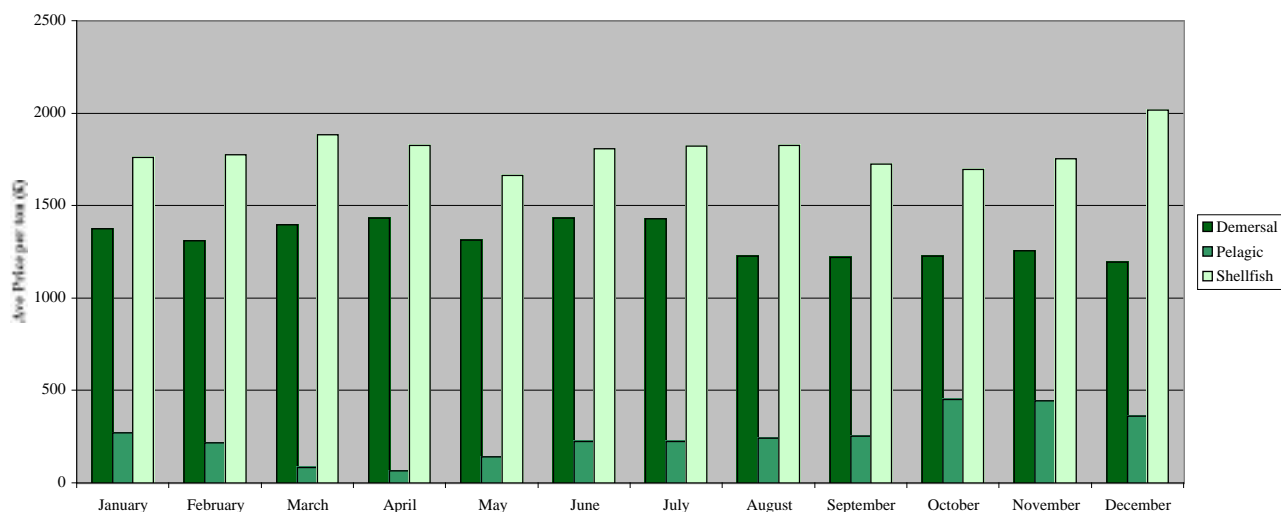


Table 24. Liveweight and value of landings into Scotland by foreign vessels, by main (1) species, 1998 to 2002

	Tonnes					Value (£'000)				
	1998	1999	2000	2001	2002	1998	1999	2000	2001	2002
Blue ling	2,840	3,458	3,892	3,250	3,333	3,397	4,632	5,281	4,431	4,590
Blue mouth	183	139	203	300	252	200	171	193	304	252
Cod	1,319	1,613	1,375	2,175	4,768	1,543	2,111	1,911	2,851	5,811
Dogfish	893	1,184	2,236	2,845	2,410	687	1,018	1,861	2,515	2,027
Forkbeard	154	280	493	573	409	137	275	502	580	414
Greenland halibut	127	460	242	290	406	223	741	424	493	754
Grenadiers	2,324	4,588	7,353	5,742	6,602	2,513	5,054	7,949	6,609	7,901
Haddock	1,262	1,721	1,279	1,567	5,300	1,377	2,082	1,615	2,083	5,350
Hake	1,104	1,238	2,353	1,118	914	4,485	5,408	9,699	5,223	4,315
Halibut	10	47	45	58	82	38	151	160	252	332
Lemon Sole	10	18	31	24	74	24	32	68	59	170
Ling	2,379	1,850	1,239	1,017	1,030	2,603	2,158	1,381	1,102	1,092
Megrim	166	169	146	167	151	382	381	347	413	375
Monks	1,364	957	626	642	727	3,363	2,344	1,465	1,274	1,737
Orange roughy	183	185	109	72	129	375	340	398	268	374
Rabbitfish	88	403	556	708	555	96	409	435	500	386
Redfish	320	689	405	549	705	460	905	583	780	838
Saithe	1,982	3,435	3,799	3,845	5,313	1,446	2,561	3,347	3,394	3,183
Scabbard fish	1,437	1,085	1,874	2,532	3,911	2,654	2,233	4,076	5,826	8,667
Skates & Rays	75	99	79	89	91	77	97	79	91	108
Tusk	333	399	380	463	347	272	364	407	362	298
Witches	309	252	139	401	231	521	413	217	615	356
Other demersal	3,404	1,275	695	494	1,670	1,744	1,166	635	459	520
Total demersal	22,267	25,544	29,550	28,918	39,409	28,619	35,046	43,035	40,485	49,848
Blue whiting	9,460	9,107	16,422	16,933	10,493	592	410	685	815	723
Mackerel	6,927	3,551	5,342	9,877	11,376	3,042	902	1,417	2,991	4,813
Other pelagic	6,198	1,567	988	3,714	260	2,201	650	204	564	53
Total pelagic	22,585	14,225	22,751	30,524	22,129	5,834	1,962	2,306	4,370	5,590
Other shellfish	331	143	144	94	36	406	244	353	179	102
Total shellfish	331	143	144	94	36	406	244	353	179	102
Total	45,183	39,913	52,445	59,536	61,574	34,859	37,251	45,694	45,034	55,540

(1) landings of £0.1 million or more in 2002

Table 25. Liveweight and value of landings into Scotland by foreign vessels, by country of origin, 1998 to 2002 (1)

	Tonnes					Value (£'000)				
	1998	1999	2000	2001	2002	1998	1999	2000	2001	2002
Belgium	189	300	183	-	114	154	171	168	-	118
Denmark	1,704	207	1,383	15	42	679	249	527	40	88
Eire	10,970	4,413	6,190	10,642	11,425	4,247	1,200	1,731	3,213	4,867
Faroe	2,995	6,146	2,719	11,554	18,397	4,066	5,652	3,739	7,692	17,150
France	12,723	16,481	21,676	19,001	17,789	15,897	20,689	27,072	25,482	24,723
Germany	657	397	126	261	88	1,760	941	269	421	190
Iceland	-	165	1,443	-	233	-	118	265	-	340
Norway	9,294	7,696	11,717	14,573	10,242	582	376	505	873	810
Russia	2,954	780	2,781	-	-	216	42	109	-	-
Spain	3,676	3,322	4,061	3,491	3,106	7,246	7,810	11,302	7,312	7,174
Other	21	6	166	-	139	12	3	7	-	80
Total	45,183	39,913	52,445	59,536	61,574	34,859	37,251	45,694	45,034	55,540

(1) landings of £0.1 million or more in 2002

Table 26. Liveweight and value of landings into Scotland by foreign vessels, by landing district, 1998 to 2002

	Tonnes					Value (£'000)				
	1998	1999	2000	2001	2002	1998	1999	2000	2001	2002
North east ports (1)	2,579	271	2,537	10,261	11,028	1,475	188	851	2,770	5,500
Other east coast	-	-	-	-	-	-	-	-	-	-
North mainland ports (2)	4,250	5,410	3,503	5,412	13,745	6,527	6,551	4,639	6,346	13,071
Orkney/Shetland	13,586	11,878	18,808	20,344	13,907	1,008	870	1,218	1,717	1,687
North west/WI ports (3)	24,657	21,415	27,507	23,453	22,894	25,415	28,740	38,897	34,130	35,283
South west ports (4)	111	939	90	66	-	434	902	89	71	-
Total	45,183	39,913	52,445	59,536	61,574	34,859	37,251	45,694	45,034	55,540

(1) Aberdeen to Buckie port districts; (2) Wick to Kinlochbervie; (3) Lochinver to Oban; (4) Campbeltown to Ayr

Table 27. Liveweight and value of landings by Scottish based vessels, by main (1) species, 1998 to 2002

	Landings into UK & abroad (tonnes)										Total				
	Into UK					Abroad					1998	1999	2000	2001	2002
	1998	1999	2000	2001	2002	1998	1999	2000	2001	2002					
Bass	84	214	47	78	112	-	7	0	-	1	84	222	47	78	113
Ling-Blue	1,890	3,597	2,147	3,765	2,533	33	20	18	15	30	1,923	3,617	2,165	3,780	2,563
Brill	12	9	9	11	4	52	40	49	61	43	65	49	58	72	47
Catfish	631	617	723	577	420	11	11	23	13	13	642	628	746	589	433
Cod	39,656	25,955	23,336	17,253	16,822	1,244	616	332	317	283	40,899	26,571	23,668	17,570	17,105
Dabs	181	76	43	39	29	1,000	1,153	764	660	649	1,181	1,229	807	699	678
Dogfish	4,278	2,880	2,836	2,695	2,349	460	705	548	822	713	4,738	3,585	3,384	3,517	3,061
Sole or Dover Sole	52	28	25	24	11	330	492	345	309	239	381	520	370	333	250
Forkbeard	123	198	232	333	383	401	388	561	229	152	523	586	793	561	534
Greenland Halibut	1,120	943	638	788	940	-	2	15	5	8	1,120	945	653	793	948
Grenadiers	320	1,037	597	996	739	-	-	-	0	0	320	1,037	597	997	739
Haddock	76,538	66,269	46,212	37,315	47,178	213	151	87	155	158	76,751	66,419	46,300	37,471	47,336
Hake	1,130	1,667	1,367	859	688	520	334	242	180	153	1,650	2,001	1,609	1,038	841
Halibut	170	224	170	130	176	2	3	1	1	10	172	227	171	131	186
Sole - Lemon	2,251	2,617	2,226	1,835	901	249	233	151	166	142	2,500	2,850	2,376	2,001	1,044
Ling	7,999	6,371	5,567	5,074	5,209	1,039	607	480	498	321	9,038	6,978	6,048	5,572	5,530
Megrim	3,600	3,192	3,137	2,796	2,476	196	55	58	30	37	3,796	3,247	3,195	2,826	2,513
Monks	15,235	11,690	11,375	11,272	9,727	682	260	202	70	636	15,917	11,950	11,577	11,993	10,363
Plaice	4,291	2,830	2,188	2,149	1,485	5,258	5,200	5,934	6,552	6,999	9,549	8,029	8,122	8,701	8,484
Pollack	777	608	813	764	629	83	8	2	8	6	860	616	815	772	635
Redfish	846	1,199	777	1,001	951	25	214	147	69	164	871	1,413	924	1,071	1,115
Saithe	8,393	7,832	7,463	7,043	7,231	49	39	37	37	305	8,442	7,871	7,500	7,080	7,536
Sandeels	11,585	6,785	9,654	1,264	1,249	17,485	7,318	6,876	-	2,442	29,070	14,103	16,530	1,264	3,691
Scabbardfish	154	200	401	660	961	-	0	3	40	52	154	200	404	700	1,013
Sharks	120	90	159	81	40	532	365	351	954	732	651	456	510	1,036	772
Skate	2,823	2,353	2,238	2,119	1,977	126	143	205	211	171	2,949	2,496	2,443	2,331	2,148
Turbot	215	153	161	130	98	132	176	161	189	203	348	329	322	319	302
Tusk	588	722	874	706	586	119	63	2	25	6	707	785	876	731	592
Whiting	20,626	20,628	19,634	12,481	8,916	144	31	39	58	51	20,770	20,660	19,674	12,539	8,967
Witches	1,549	1,593	1,835	1,970	1,465	191	216	276	276	274	1,740	1,809	2,112	2,246	1,739
Other demersal	1,205	1,045	1,012	1,125	1,096	782	348	213	282	265	1,987	1,393	1,225	1,407	1,361
Total demersal	208,442	173,623	147,898	117,335	117,378	31,357	19,198	18,123	12,884	15,258	239,799	192,821	166,200	130,219	132,636
Argentines	89	572	2,310	3,581	4,356	1,126	309	3,000	4,374	81	1,216	881	5,310	7,955	4,438
Blue Whiting	26,941	38,432	17,704	20,023	8,047	65,488	60,422	24,793	30,124	18,355	92,429	98,854	42,497	50,147	26,402
Herring	33,181	40,881	36,622	39,907	39,588	54,364	43,574	28,344	20,271	13,067	87,545	84,455	64,965	60,177	52,656
Horse Mackerel	3,892	1,135	1,908	2,112	819	16,112	10,607	9,348	7,394	2,303	20,004	11,741	11,255	9,507	3,122
Mackerel	46,470	37,109	48,975	59,874	92,587	104,769	107,397	122,128	109,313	75,754	151,239	144,507	171,103	169,188	168,341
Pilchard	4,504	3,509	2,668	4,387	2,284	2,111	1,222	1,380	1,475	1,222	6,615	4,731	4,049	5,862	3,506
Sprats	2,399	7,368	4,014	1,356	2,575	2,061	907	-	-	-	4,460	8,275	4,014	1,356	2,575
Other pelagic	99	32	1	0	1	1,890	365	-	273	-	1,989	397	1	274	1
Total pelagic	117,575	129,039	114,202	131,241	150,257	247,921	224,802	188,992	173,224	110,784	365,496	353,841	303,194	304,466	261,041
Norway Lobster	20,009	22,136	21,155	20,318	20,768	139	43	30	35	32	20,148	22,179	21,185	20,353	20,800
Scallops	10,565	9,031	9,668	12,642	11,682	0	4	0	-	0	10,566	9,034	9,668	12,642	11,682
Edible crabs	6,233	5,822	7,855	6,941	6,014	13	7	3	2	30	6,246	5,829	7,858	6,944	6,044
Lobsters	629	509	391	290	323	0	0	1	0	0	629	509	391	291	323
Velvet crabs	2,409	1,885	2,414	2,230	1,971	-	-	-	-	-	2,409	1,885	2,414	2,230	1,971
Squid	1,410	1,161	860	720	1,190	217	153	129	111	180	1,627	1,314	989	831	1,370
Queen Scallops	7,476	5,112	4,372	6,083	7,482	-	-	-	-	-	7,476	5,112	4,372	6,083	7,482
Whelks	1,075	1,315	2,321	1,615	855	39	48	0	0	40	1,114	1,362	2,321	1,615	896
Other crabs	465	265	450	352	370	98	66	10	55	119	564	331	460	407	489
Other shellfish	4,396	2,477	2,406	2,121	1,075	10	25	11	36	11	4,406	2,501	2,417	2,158	1,086
Total shellfish	54,668	49,713	51,892	53,313	51,731	516	345	184	240	411	55,184	50,058	52,075	53,553	52,143
Total landings	380,685	352,375	313,992	301,889	319,366	279,794	244,345	207,298	186,348	126,453	660,479	596,720	521,290	488,237	445,819

	Landings into UK & abroad (value - £'000)										Total				
	Into UK					Abroad					1998	1999	2000	2001	2002
	1998	1999	2000	2001	2002	1998	1999	2000	2001	2002					
Bass	577	1,477	259	457	693	-	62	0	-	2	577	1,540	259	457	695
Blue Ling	1,347	2,846	1,787	3,583	2,515	17	10	11	9	19	1,364	2,856	1,797	3,591	2,534
Brill	41	33	37	41	16	230	203	222	262	216	271	236	259	304	232
Catfish	927	902	1,000	814	669	18	19	29	18	18	944	921	1,029	832	687
Cod	43,942	35,139	32,948	23,289	23,525	1,318	880	470	466	429	45,261	36,018	33,418	23,755	23,954
Dabs	115	41	21	18	16	688	996	707	555	445	803	1,037	728	573	461
Dogfish	3,187	2,228	2,339	2,534	2,411	209	416	338	614	466	3,396	2,644	2,678	3,148	2,876
Dover Sole	221	137	109	121	48	1,766	2,842	1,982	2,142	1,573	1,987	2,978	2,092	2,263	1,622
Forkbeard	128	162	217	268	464	528	512	745	309	203	607	641	907	526	467
Greenland Halibut	1,946	1,576	1,076	1,392	1,633	-	2	20	8	11	1,946	1,578	1,095	1,400	1,645
Grenadiers	176	676	325	780	527	-	-	-	0	0	176	676	325	780	527
Haddock	52,035	54,329	46,794	31,660	30,832	247	135	60	98	72	52,282	54,464	46,854	31,758	30,905
Hake	1,454	2,469	1,892	1,445	1,344	3,501	2,211	687	344	291	4,955	4,680	2,579	1,789	1,636
Halibut	682	661	555	503	640	7	21	4	5	10	689	682	559	508	650
Lemon Sole	4,248	5,026	4,708	4,161	2,165	492	558	357	451	395	4,741	5,583	5,065	4,612	2,560
Ling	6,731	6,287	5,600	5,587	5,668	2,179	1,391	1,221	1,287	828	8,910	7,678	6,921	6,874	6,496
Megrim	4,858	5,045	4,440	4,023	4,045	836	229	244	124	147	5,694	5,274	4,684	4,147	4,193

Chart 10. Value of landings per Scottish based over 10 metres vessel, by vessel type 1986 to 2002

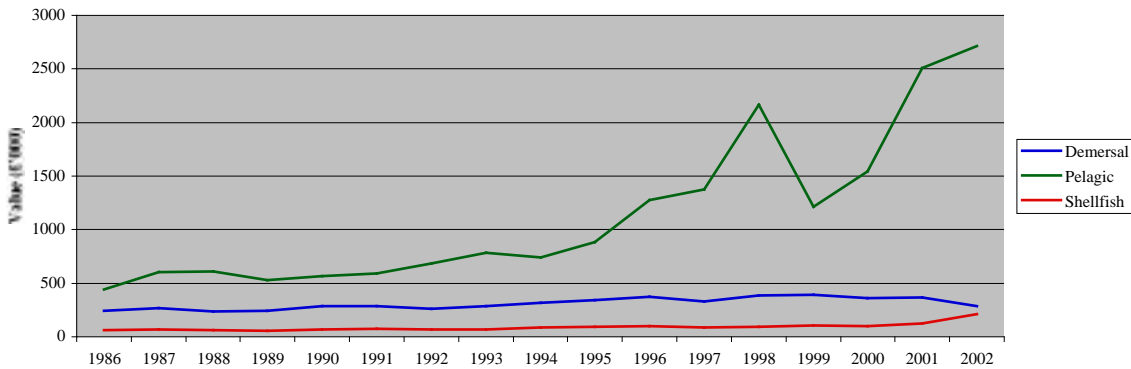


Table 28. Liveweight and value of landings abroad by Scottish based vessels, by country of landing, 1998 to 2002

	Tonnes					Value (£ thousand)				
	1998	1999	2000	2001	2002	1998	1999	2000	2001	2002
EU: Denmark	66,311	77,191	51,785	38,863	35,057	11,204	7,415	7,177	8,098	9,260
Eire	4,738	3,917	1,774	5,319	1,923	1,001	1,022	517	1,044	718
France	4,042	2,217	2,157	2,676	1,484	720	571	380	508	348
Germany	0	0	0	0	178	0	0	0	0	187
Holland	10,575	10,731	7,861	9,776	9,367	12,912	15,038	10,950	12,629	12,493
Spain	5,145	3,474	3,235	3,735	3,105	15,546	9,981	8,053	8,987	7,684
Non-EU: Faroes	49,512	28,674	24,664	19,102	6,009	8,400	4,560	5,566	5,345	1,153
Brazil	0	0	0	582	404	0	0	0	3,036	1,919
Iceland	18,720	1,713	101	54	0	1,309	84	99	52	0
Norway	120,751	116,424	115,705	106,241	68,926	56,083	24,761	37,122	46,214	37,140
Total	279,794	244,340	207,298	186,348	126,453	107,175	63,432	69,880	85,912	70,902

Table 29. Liveweight and value of landings from specified ICES areas by Scottish based vessels, by main (1) species, 2002

ICES area	Liveweight (tonnes)								Value (£'000)												
	North sea		Area	Faroes	West Scotland		Irish sea	Rest of	Other	Total	North sea		Area	Faroes	West Scotland		Irish sea	Rest of	Other	Total	
	IV a	IV b	II a	V b	VI a	VI b	VII a	VII a	VII		IV a	IV b	II a	V b	VI a	VI b	VII a	VII			
Bass	-	6	-	-	-	-	-	-	107	0	113	-	26	-	-	-	-	-	669	0	695
Blue ling	276	-	15	109	1,851	293	-	9	11	2,563	303	-	16	107	1,833	263	-	4	9	2,534	
Brill	0	38	-	-	2	0	1	1	7	47	0	186	-	6	0	3	3	33	232		
Catfish	336	32	1	6	9	42	-	-	7	433	543	47	2	8	14	63	-	-	10	687	
Cod	14,289	1,021	8	198	1,457	67	21	7	37	17,105	20,109	1,309	10	294	2,021	122	32	9	48	23,954	
Dabs	16	642	-	1	6	-	0	0	12	678	9	441	-	1	2	-	0	0	8	461	
Dogfish	794	88	-	4	1,319	271	54	395	138	3,061	1,011	98	-	3	1,172	180	61	250	102	2,876	
Dover sole	0	198	-	-	2	-	4	2	44	250	0	1,331	-	0	5	-	17	13	256	1,622	
Forkbeard	17	-	1	5	289	43	-	179	-	534	10	-	0	3	193	33	-	228	-	467	
Grenadiers	19	0	0	56	385	278	-	1	0	739	15	0	0	40	245	227	-	0	0	527	
Greenland halibut	217	-	21	141	512	41	-	-	16	948	397	-	38	256	875	56	-	-	23	1,645	
Gurnards	67	203	-	1	52	9	5	28	1	365	12	120	-	1	13	4	4	41	0	195	
Haddock	32,884	7,091	2	174	5,988	1,145	45	4	3	47,336	20,114	4,804	1	205	4,774	941	59	4	2	30,905	
Hake	232	26	0	1	220	0	4	358	0	841	332	40	0	1	438	0	11	814	0	1,636	
Halibut	123	19	0	25	14	4	-	-	0	186	415	78	0	90	51	15	-	-	1	650	
Lemon sole	431	491	0	28	78	11	2	2	1	1,044	1,003	1,255	0	102	160	25	5	6	4	2,560	
Ling	3,313	44	2	124	1,656	110	10	247	25	5,530	3,565	52	3	157	1,869	198	9	580	64	6,496	
Megrims	1,668	1	0	4	624	146	11	55	3	2,513	2,774	2	1	4	982	252	12	165	1	4,193	
Monks	8,084	222	5	63	1,070	160	25	342	391	10,363	17,379	469	12	153	2,356	519	49	1,144	1,897	23,977	
Mullett	0	41	-	-	0	-	-	-	1	0	42	0	135	-	0	-	-	2	0	136	
Plaice	829	6,979	0	13	323	1	7	1	331	8,484	527	8,004	0	20	224	0	7	1	301	9,085	
Pollack	524	34	-	1	66	0	8	2	0	635	587	42	-	1	69	0	10	3	0	712	
Redfish	319	0	59	85	320	47	-	8	275	1,115	328	0	42	106	297	39	0	39	280	1,131	
Roes	45	9	-	1	12	0	-	-	1	68	81	23	-	2	23	0	0	-	1	129	
Saithe	5,375	248	16	504	1,347	37	5	0	2	7,536	2,184	125	5	255	560	19	5	0	1	3,154	
Sandeels	543	2,442	-	-	706	-	-	-	-	3,691	30	159	-	-	25	-	-	-	-	214	
Scabbardfish	18	-	-	48	601	293	0	53	0	1,013	19	-	-	54	668	301	0	58	0	1,100	
Shark	5	4	-	0	46	135	0	382	200	772	5	11	-	0	46	403	0	857	599	1,922	
Skate	782	40	3	11	1,059	40	63	135	15	2,148	550	24	0	12	775	43	67	370	22	1,863	
Tusk	263	2	3	23	225	73	-	2	1	592	191	2	2	18	160	53	-	3	1	428	
Turbot	68	202	0	1	16	1	0	7	6	302	361	1,197	0	5	84	6	1	71	49	1,773	
Whiting	7,127	682	1	36	1,059	7	32	13	11	8,967	4,258	370	0	40	567	5	26	6	4	5,278	
Witches	902	94	3	9	350	139	1	241	0	1,739	842	121	3	14	297	323	1	1,010	0	2,611	
Other demersal	437	91	0	6	220	10	1	92	29	886	324	89	0	7	182	13	1	163	10	789	
Total demersal	80,003	20,990	140	1,678	21,884	3,404	299	2,670	1,567	132,636	78,277	20,558	136	1,960	20,984	4,104	378	6,511	3,726	136,634	
Argentines	162	-	2	137	4,136	1	-	1	-	4,438	21	-	0	37	796	0	-	2	-	857	
Blue whiting	-	-	-	-	9,205	1,727	-	15,471	-	26,402	-	-	-	-	698	138	-	1,201	-	2,037	
Herring	26,299	289	7,093	-	18,065	-	130	780	-	52,656	4,704	43	2,385	-	2,899	-	17	282	-	10,329	
Horse mackerel	254	1	-	-	1,192	-	-	1,676	-	3,122	58	0	-	-	299	-	-	490	-	848	
Mackerel	53,000	7	-	665	104,315	-	-	10,353	-	168,341	26,487	4	-	307	51,667	-	-	4,130	-	82,596	
Pilchards	-	-	-	-	-	-	-	3,506	-	3,506	-	-	-	-	-	-	-	857	-	857	
Sprats	-	-	-	-	2,575	-	-	-	-	2,575	-	-	-	-	268	-	-	-	-	268	
Other pelagic	0	-	-	-	0	-	-	1	-	1	-	-	-	-	0	-	-	1	-	1	
Total pelagic	79,715	297	7,095	802	139,487	1,727	130	31,787	-	261,041	31,270	47	2,385	344	56,627	138	17	6,963	-	97,792	
Edible crabs	2,071	311	-	-	3,659	-	-	1	2	6,044	2,144	256	-	-	3,966	-	-	1	0	6,368	
Green Crabs	293	-	-	-	56	-	-	-	-	349	146	-	-	-	29	-	-	-	-	176	
Lobsters	122	60	-	-	138	-	2	1	0	323	1,277	597	-	-	1,455	-	21	10	0	3,360	
Mussels	659	-	-	-	76	-	-	-	-	735	171	-	-	-	22	-	-	-	-	193	
Norway lobster	8,693	2,487	0	-	9,517	1	48	54	0	20,800	21,301	5,521	1	-	28,816	3	98	238	0	55,978	
Periwinkles	68	-	-	-	40	-	-	-	-	108	86	-	-	-	40	-	-	-	-	126	
Queen scallops	56	-	-	-	3,440	-	-	3,986	-	7,482	47	-	-	-	1,272	-	1,531	-	-	2,850	
Scallops	1,551	1,238	-	-	6,317	-	1,069	1,507	-	11,682	2,326	1,179	-	-	10,134	-	2,086	2,062	-	17,787	
Squid	687	232	-	6	192	58	9	185	1	1,370	1,148	338	-	10	334	152	19	1,035	1	3,037	
Velvet crabs	834	49	-	-	1,088	-	-	-	-	1,971	1,314	71	-	-	1,724	-	-	-	-	3,110	
Whelks	628	40	-	-	214	-	12	0	0	896	277	18	-	-	93	-	5	0	0	394	
Other crabs	0	18	-	-	0	99	-	11	11	140	0	15	-	-	0	100	-	12	11	1	

Table 30. Liveweight and value of landings by Scottish based vessels, by main (1) species and overall vessel length group (metres), 2002

	Liveweight (tonnes)										Value (£'000)											
	Overall vessel length group										Total	Overall vessel length group										Total
	<8	8-10	>10-12	>12-15	>15-18	>18-24	>24-30	>30-40	>40-50	over 50		<8	8-10	>10-12	>12-15	>15-18	>18-24	>24-30	>30-40	>40-50	over 50	
Bass	-	0	0	0	0	6	44	62	0	-	113	-	0	0	0	0	25	283	386	0	-	695
Blue ling	-	-	-	-	-	145	1,432	629	357	-	2,563	-	-	-	-	155	1,472	560	348	-	-	2,534
Brill	-	0	0	0	1	1	0	11	33	-	47	-	0	0	0	6	4	1	50	170	-	232
Catfish	-	-	-	0	5	134	241	20	32	-	433	-	-	-	0	7	205	393	34	47	-	687
Cod	4	47	20	64	433	5,238	10,104	825	370	-	17,105	4	49	11	63	488	6,912	14,577	1,261	587	-	23,954
Dabs	-	0	0	2	1	19	5	351	300	-	678	-	0	0	1	10	3	242	203	-	-	461
Dogfish	1	18	26	79	235	674	860	1,101	66	-	3,061	2	20	19	76	229	647	889	931	63	-	2,876
Dover sole	-	0	0	0	1	5	1	78	164	-	250	-	1	0	1	5	17	6	505	1,086	-	1,622
Forkbeard	-	-	-	-	-	45	220	244	26	-	534	-	-	-	-	-	25	167	255	20	-	467
Grenadiers	-	-	-	-	-	15	90	347	287	-	739	-	-	-	-	9	53	237	227	-	-	527
Greenland halibut	-	-	-	-	0	61	703	102	82	-	948	-	-	-	-	0	96	1,243	172	133	-	1,645
Gurnards	-	0	0	0	8	201	90	45	21	-	365	-	0	0	0	8	116	16	48	8	-	195
Haddock	1	100	40	513	1,624	16,519	24,217	3,623	698	-	47,336	0	60	24	218	789	8,932	16,844	3,450	587	-	30,905
Hake	0	0	0	4	22	110	347	341	16	-	841	0	0	0	5	38	141	711	719	22	-	1,636
Halibut	-	0	0	1	8	53	100	16	7	-	186	-	4	1	4	32	202	316	60	32	-	650
Lemon sole	-	8	2	9	72	466	292	112	82	-	1,044	-	15	2	17	149	1,076	761	310	230	-	2,560
Ling	-	3	5	2	59	1,001	3,252	977	232	-	5,530	-	2	0	2	59	1,034	3,622	1,491	287	-	6,496
Megrim	-	1	0	2	75	1,341	783	184	128	-	2,513	-	0	0	2	92	2,208	1,237	426	227	-	4,193
Monks	0	8	7	48	385	4,293	4,099	1,120	402	-	10,363	0	14	12	82	743	8,939	9,201	3,993	992	-	23,977
Mullett	-	0	-	-	0	39	1	0	1	-	42	-	0	-	-	0	133	2	0	1	-	136
Plaice	0	5	4	20	97	706	480	2,970	4,202	-	8,484	0	4	2	10	56	448	325	3,366	4,873	-	9,085
Pollack	0	2	8	0	14	89	456	62	2	-	635	0	1	0	0	17	100	519	73	2	-	712
Redfish	-	-	-	0	0	60	547	113	396	-	1,115	-	-	-	0	0	54	567	106	403	-	1,131
Roes	-	0	0	0	1	23	38	4	2	-	68	-	1	0	0	1	46	73	6	2	-	129
Saithe	13	11	4	2	86	1,505	4,620	806	490	-	7,536	6	6	2	1	33	539	1,897	416	255	-	3,154
Sandeels	-	-	-	-	541	2	0	-	3,148	-	3,691	-	-	-	-	30	0	0	-	184	-	214
Scabbardfish	-	-	0	0	-	33	269	363	332	15	1,013	-	-	0	0	-	30	300	372	393	5	1,100
Shark	0	1	-	0	1	4	415	350	0	-	772	0	4	-	0	1	10	868	1,037	-	-	1,922
Skate	1	4	14	42	224	717	648	327	172	-	2,148	0	3	7	32	185	469	459	533	176	-	1,863
Tusk	-	3	-	0	1	82	257	195	54	-	592	-	2	-	0	1	56	182	144	43	-	428
Turbot	-	1	0	2	9	45	28	93	123	-	302	-	6	1	8	42	224	147	562	784	-	1,773
Whiting	0	15	7	39	541	4,127	3,987	194	57	-	8,967	0	7	2	14	226	2,008	2,828	159	34	-	5,278
Witches	0	2	2	13	152	891	265	377	37	-	1,739	0	2	1	9	125	810	290	1,330	43	-	2,611
Other demersal	0	20	29	36	97	267	153	132	36	115	886	0	17	21	28	76	260	197	170	16	4	789
Total demersal	20	252	169	877	4,694	38,917	59,046	16,176	12,354	130	132,636	14	216	106	573	3,439	35,941	60,451	23,406	12,479	9	136,634
Argentines	-	-	-	-	4	258	245	135	3,796	-	4,438	-	-	-	-	-	1	64	78	18	696	857
Blue whiting	-	-	-	-	-	-	-	-	26,402	-	26,402	-	-	-	-	-	-	-	-	-	2,037	2,037
Herring	-	-	0	2	12	76	1	3,196	9,999	39,370	52,656	-	-	0	0	1	6	0	697	1,570	8,055	10,329
Horse mackerel	-	-	-	-	-	1	-	162	317	2,643	3,122	-	-	-	-	-	0	-	43	65	739	848
Mackerel	130	127	0	6	0	4	4	3,998	20,484	143,588	168,341	46	47	0	3	0	2	1	1,529	8,814	72,153	82,596
Pilchards	-	-	-	-	-	-	-	1,638	1,868	-	3,506	-	-	-	-	-	-	-	363	494	-	857
Sprats	-	-	-	-	1,473	1,102	-	-	-	-	2,575	-	-	-	-	153	114	-	-	-	-	268
Other pelagic	0	-	-	-	-	0	0	0	0	-	1	0	-	-	-	-	-	0	0	0	-	1
Total pelagic	130	127	0	8	1,485	1,186	262	9,239	32,802	215,800	261,041	46	47	0	3	155	123	66	2,711	10,961	83,680	97,792
Edible crabs	401	1,502	1,531	678	566	1,336	-	3	26	-	6,044	418	1,585	1,413	640	663	1,639	-	2	7	-	6,368
Green Crabs	167	129	53	-	-	-	-	-	-	-	349	85	66	25	-	-	-	-	-	-	-	176
Lobsters	100	119	65	18	10	9	0	1	0	-	323	1,009	1,265	656	198	113	109	1	10	1	-	3,360
Mussels	1	-	734	-	-	-	-	-	-	-	735	1	-	192	-	-	-	-	-	-	-	193
Norway lobster	197	1,806	2,052	1,972	5,506	8,309	900	57	1	-	20,800	1,161	7,587	7,047	4,671	12,387	20,255	2,613	250	6	-	55,978
Periwinkles	106	2	-	-	-	-	-	-	-	-	108	125	2	-	-	-	-	-	-	-	-	126
Queen scallops	26	31	3	24	486	6,886	-	26	-	-	7,482	25	10	2	22	239	2,541	-	9	-	-	2,850
Scallops	254	345	631	760	3,151	2,998	1,158	2,386	0	-	11,682	497	669	960	1,265	4,938	4,920	1,212	3,326	0	-	17,787
Squid	0	70	3	60	99	593	282	240	23	-	1,370	0	106	4	96	162	1,008	492	1,125	44	-	3,037
Velvet crabs	756	774	388	42	10	0	-	-	-	-	1,971	1,137	1,265	616	77	17	0	-	-	-	-	3,110
Whelks	90	199	202	231	116	16	1	11	29	-	896	46	97	88	95	46	3	0	4	14	-	394
Other crabs	2	15	-	-	-	0	-	122	-	-	140	2	13	-	-	-	0	-	123	-	-	138
Other shellfish	125	39	8	0	9	46	16	2	0	-	244	149	87	31	3	7	34	15	2	0	-	329
Total shellfish	2,226	5,030	5,670	3,786	9,952	20,193	2,357	2,848	80	-	52,143	4,654	12,753	11,034	7,067	18,571	30,510	4,334	4,852	72	-	93,846
Total landings	2,376	5,409	5,840	4,670	16,131	60,297	61,666	28,263	45,236	215,931	445,819	4,714	13,015	11,140	7,643	22,165	66,574	64,851	30,968	23,512	83,689	328,272

(1) Total value over £0.1m

Chart 11. Value of landings by Scottish based vessels by species type, 1986 to 2002

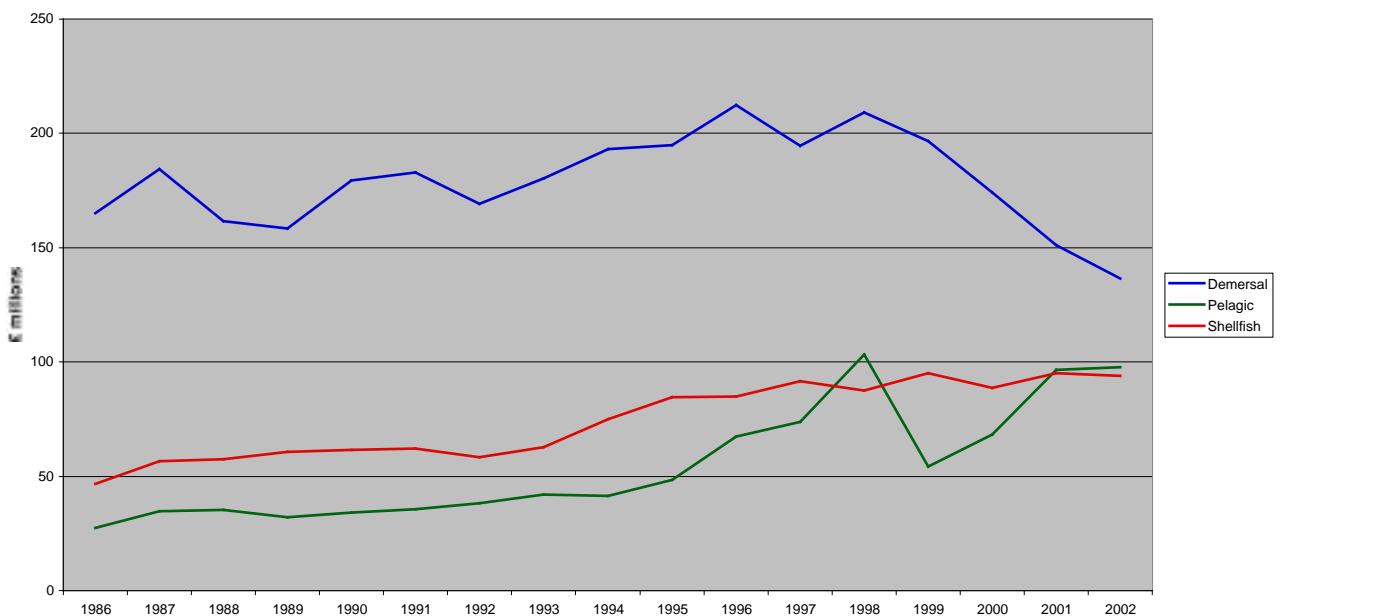


Table 31. Liveweight and value of landings by Scottish based vessels, by main (1) species and gear 2002

	Liveweight (tonnes)									Value (£'000)							
	Demersal trawl	Demersal seine	Demersal twin trawl	Lines	Gill nets	Beam trawl	Other demersal	Demersal total	Demersal trawl	Demersal seine	Demersal twin trawl	Lines	Gill nets	Beam trawl	Other demersal	Demersal total	
Bass	7	0	-	-	1	0	-	8	32	0	-	-	2	0	-	34	
Blue ling	2,127	-	415	4	18	-	0	2,563	2,167	-	354	5	9	-	0	2,534	
Brill	1	2	0	-	-	43	-	46	3	7	1	-	-	216	-	227	
Catfish	310	43	68	0	-	6	-	427	497	69	107	0	-	6	-	679	
Cod	12,178	2,656	1,516	97	60	184	-	16,692	17,291	3,675	2,076	143	85	261	-	23,530	
Dabs	36	7	11	0	-	620	-	675	26	3	9	0	-	420	-	459	
Dogfish	1,624	114	214	363	530	6	158	3,008	1,646	117	229	376	361	6	95	2,831	
Dover sole	3	0	0	-	-	239	-	243	16	1	1	-	-	1,576	-	1,594	
Forkbeard	430	-	42	30	29	-	2	534	368	-	21	37	38	-	3	467	
Grenadiers	692	-	47	-	-	-	-	739	499	-	28	-	-	-	-	527	
Greenland halibut	870	-	78	-	-	-	-	948	1,522	-	123	-	-	-	-	1,644	
Gurnards	308	9	20	-	-	27	-	365	172	8	3	-	-	11	-	195	
Haddock	32,046	11,203	2,970	50	1	83	0	46,354	22,115	6,411	1,899	64	1	40	0	30,531	
Hake	526	74	35	134	60	8	-	837	889	127	42	411	151	10	-	1,631	
Halibut	133	29	14	2	0	0	-	178	443	106	52	9	0	4	-	615	
Lemon sole	640	146	74	-	0	135	-	994	1,560	373	168	-	0	372	-	2,472	
Ling	3,689	123	984	548	102	14	26	5,485	4,064	133	1,065	849	255	15	71	6,453	
Megrims	1,872	107	468	-	0	25	-	2,473	3,158	186	751	-	0	44	-	4,139	
Monks	7,168	335	1,558	2	579	209	46	9,898	15,691	650	3,384	7	2,591	512	191	23,026	
Mullett	34	5	0	-	1	1	-	42	117	17	0	-	2	1	-	136	
Plaice	969	272	106	0	0	7,069	0	8,416	671	180	69	0	0	8,133	0	9,053	
Pollack	483	75	64	2	1	0	-	626	549	86	73	2	1	1	-	711	
Redfish	1,009	1	93	2	9	-	0	1,114	981	1	102	3	41	-	2	1,131	
Roes	49	13	4	1	0	1	-	68	92	25	9	1	1	1	-	128	
Saithe	5,921	780	720	22	2	1	-	7,447	2,506	308	296	11	1	1	-	3,123	
Sandeels	1,219	-	-	-	0	-	30	1,249	55	-	-	-	0	-	-	55	
Scabbardfish	920	-	78	0	-	-	-	998	1,014	-	81	0	-	-	-	1,095	
Shark	18	0	1	402	347	-	3	771	30	1	1	844	1,036	-	7	1,918	
Skate	1,567	86	218	29	28	140	32	2,099	1,307	55	143	40	44	150	87	1,826	
Tusk	408	2	73	106	1	1	-	592	289	3	51	83	1	1	-	428	
Turbot	59	9	9	0	2	205	5	289	291	47	48	0	17	1,258	47	1,708	
Whiting	6,068	1,794	704	0	0	34	0	8,600	3,550	1,246	357	0	0	14	0	5,168	
Witches	1,357	97	148	0	-	0	-	1,602	2,256	122	131	1	-	0	-	2,509	
Other demersal	519	38	61	15	11	34	0	679	522	45	65	28	39	11	0	710	
Total demersal	85,260	18,021	10,793	1,811	1,785	9,087	303	127,058	86,390	14,003	11,740	2,913	4,675	13,063	505	133,289	
Other species	22,819	144	1,237	290	133	83	22	24,729	36,188	343	3,135	135	137	51	36	40,026	

	Liveweight (tonnes)			Value (£'000)		
	Pelagic purse seine	Pelagic trawl	Pelagic total	Pelagic purse seine	Pelagic trawl	Pelagic total
Argentines	-	3,865	3,865	-	699	699
Blue whiting	-	26,402	26,402	-	2,037	2,037
Herring	819	49,689	50,508	128	9,678	9,806
Horse mackerel	-	3,087	3,087	-	840	840
Mackerel	2,296	159,879	162,175	1,121	78,764	79,884
Pilchards	-	3,428	3,428	-	836	836
Sprats	-	2,575	2,575	-	268	268
Other pelagic	-	1	1	-	1	1
Total pelagic	3,116	248,926	252,041	1,249	93,122	94,371
Other species	-	2,751	2,751	-	906	906

	Liveweight (tonnes)					Value (£'000)				
	Creel fishing	Nephrop trawl	Dredging	Hand shellfishing	Shellfish total	Creel fishing	Nephrop trawl	Dredging	Hand shellfishing	Shellfish total
Edible crabs	5,955	4	9	-	5,968	6,312	4	4	-	6,319
Green Crabs	349	0	-	-	349	176	0	-	-	176
Lobsters	319	1	-	-	320	3,324	6	-	-	3,330
Mussels	0	-	734	1	735	0	-	192	1	193
Norway lobster	1,482	5,691	-	1	7,175	9,196	13,656	-	11	22,863
Periwinkles	3	-	-	104	108	4	-	-	123	126
Queen scallops	-	-	6,996	13	7,009	-	-	2,592	14	2,606
Scallops	0	1	11,211	468	11,681	1	1	16,790	994	17,786
Squid	0	66	0	-	66	0	91	0	-	91
Velvet crabs	1,962	7	0	0	1,969	3,094	13	0	0	3,107
Whelks	834	6	1	-	841	370	1	1	-	372
Other crabs	18	-	-	-	18	15	-	-	-	15
Other shellfish	11	16	5	135	167	56	10	4	168	238
Total shellfish	10,934	5,792	18,956	722	36,404	22,548	13,782	19,582	1,311	57,223
Other species	57	2,698	82	-	2,836	32	2,232	192	-	2,456

(1) Total value over £0.1m

Chart 12. Liveweight landings by Scottish based vessels, by quarter, 2002

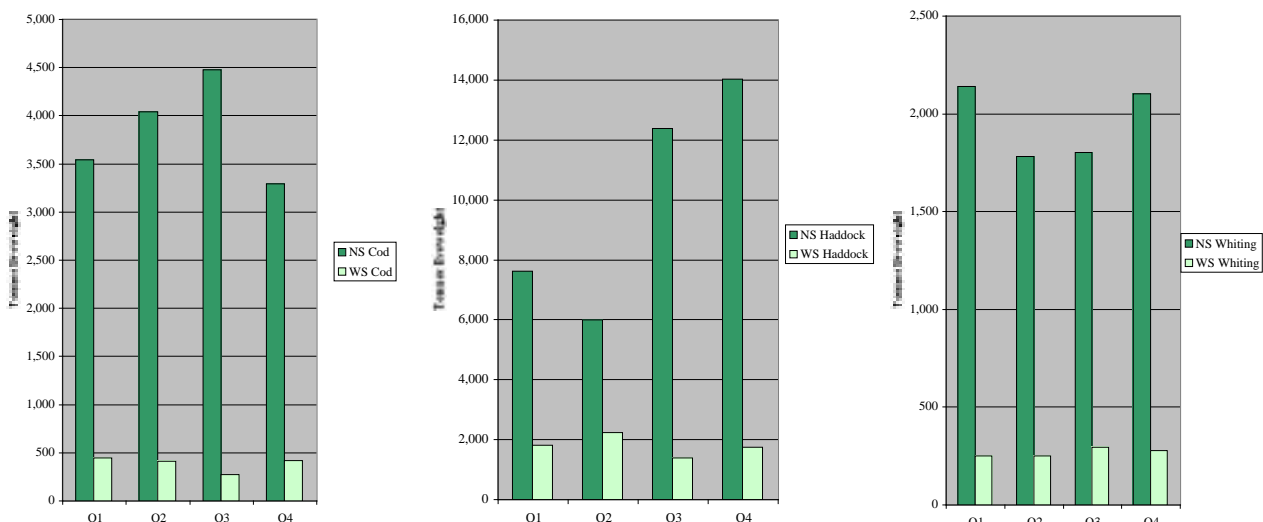
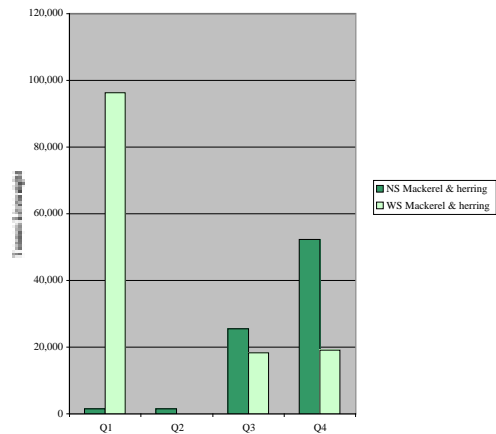
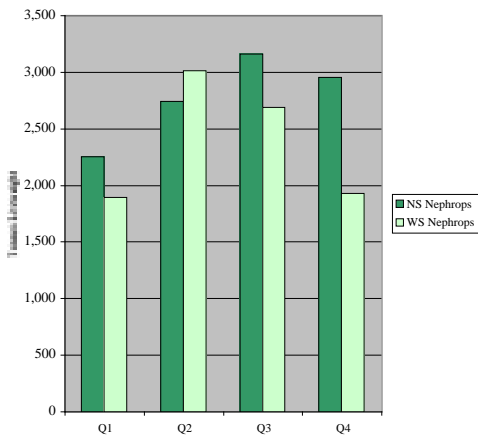


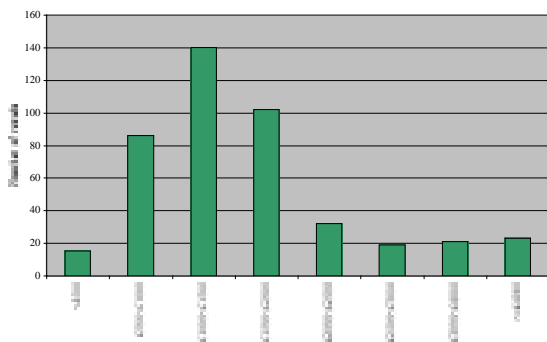
Chart 12. continued



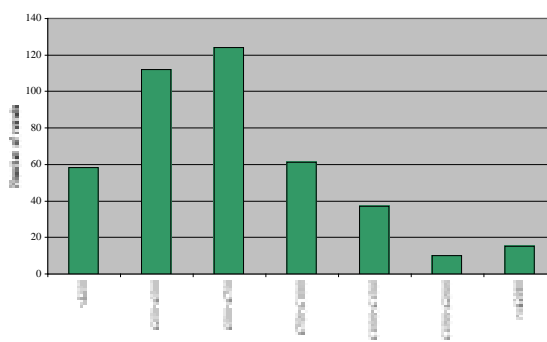
NS:North Sea WS:West of Scotland

Chart 13. Average value of landings per day at sea by Scottish based over 10m based vessels, by vessel type, 2002

Demersal Vessels



Shellfish Vessels



Pelagic Vessels

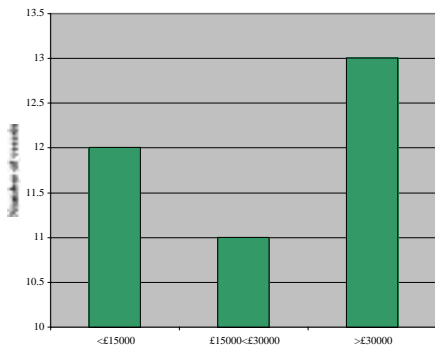
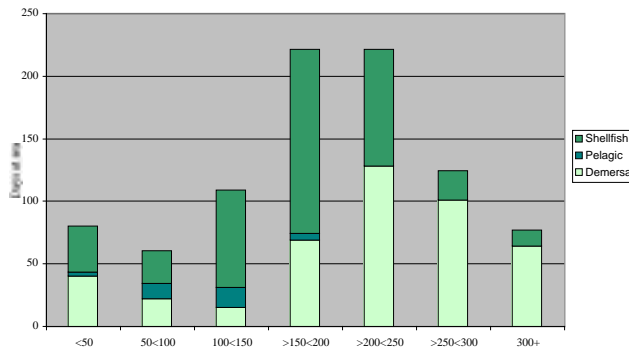


Chart 14. Days at sea by Scottish based over 10m vessels by vessel type, 2002



(1) £ per day. A day in which fishing activity, of whatever duration, takes place is counted as a day fished.

Table 32. Days fished by Scottish based over 10 metres vessels by ICES area, 2002

ICES AREA	Demersal	Pelagic	Shellfish
IVb, Central North Sea	9180	23	7053
Vb, Faroes	748	4	-
VIIj, Great Sole	956	27	-
VIIa, Irish Sea	266	14	1498
VIII, Little Sole	109	21	181
IVa, Northern North Sea	44580	516	12365
VIIc, Porcupine Bank	592	23	-
VIIb, Rockall	1037	2	-
IVc, Southern North Sea	121	-	-
VIII, West Great Sole	756	-	-
VIII, West Ireland	112	26	-
VIa, West Scotland	15696	605	38961
VIe, Western English Channel	208	116	272
Other	461	88	67
Total	74820	1465	60396

Table 33. Days fished by Scottish based over 10 metres vessels by length group, 2002

Length group	Demersal	Pelagic	Shellfish
>10<15	2710	-	32935
>15<20	18143	-	23009
>20<25	25992	-	2983
>25<30	19247	-	634
>30<35	3446	-	591
35 & over	5282	1465	244
Total	74820	1465	60396

Table 34. Disposal of sea fish landed (1) into Scotland by UK vessels, 1998 to 2002

	Demersal					Pelagic					Shellfish				
	1998	1999	2000	2001	2002	1998	1999	2000	2001	2002	1998	1999	2000	2001	2002
Human consumption	195.8	168.2	142.2	119.0	117.8	70.1	86.2	86.5	101.2	137.5	54.4	49.9	51.8	51.5	50.8
Klondyked	-	-	-	-	-	5.8	-	0.6	-	0.1	-	-	-	-	-
Meal and oil	11.6	6.7	10.3	2.6	3.7	28.8	32.0	16.1	14.9	5.7	-	-	-	-	-
Dumped/ bait	0.1	0.1	0.2	0.1	0.4	0.1	1.7	0.1	0.1	-	-	-	-	-	-
Withdrawn	1.2	1.0	-	-	-	1.1	4.0	-	-	-	-	-	-	-	-
Other	-	-	-	0.1	0.1	-	-	-	0.2	0.2	-	-	-	-	-
Total	208.8	175.9	152.7	121.8	122.0	105.9	123.9	103.2	116.4	143.4	54.4	49.9	51.8	51.5	50.8

(1) '000 tonnes

Table 35. Number of fishermen employed on Scottish based vessels, 1998 to 2002

	1998	1999	2000	2001	2002
Regularly employed	6,395	6,042	5,594	5,353	4,369
Irregularly employed	1,334	1,242	1,260	1,203	1,233
Crofters	42	46	48	81	105
Total	7,771	7,330	6,902	6,637	5,707

Table 36. Number of fishermen employed by district and employment status, 2002

	Regularly employed	Irregularly employed	Crofters	Total
Eyemouth	164	15	-	179
Pittenweem	111	35	-	146
Aberdeen	124	61	-	185
Peterhead	531	48	-	579
Fraserburgh	813	162	-	975
Buckie	330	22	-	352
Scrabster	200	-	-	200
Orkney	243	86	-	329
Shetland	236	197	-	433
Stornoway	181	258	46	485
Kinlochbervie	39	-	2	41
Lochinver	48	4	3	55
Ullapool	74	8	1	83
Mallaig	193	21	-	214
Portree	135	35	30	200
Oban	204	73	23	300
Campbeltown	255	75	-	330
Ayr	488	133	-	621
All districts	4,369	1,233	105	5,707

Chart 15 Number of fishermen employed on Scottish based vessels, 1962 to 2002

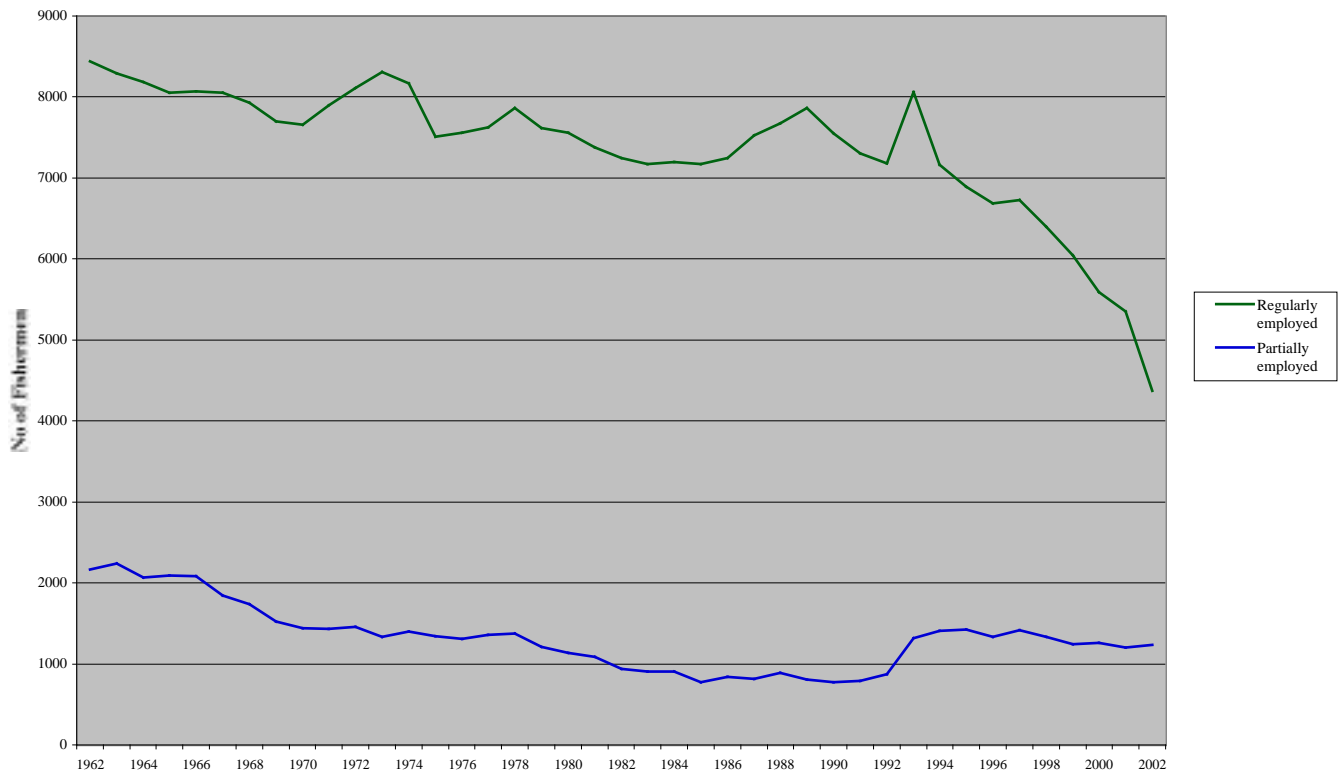
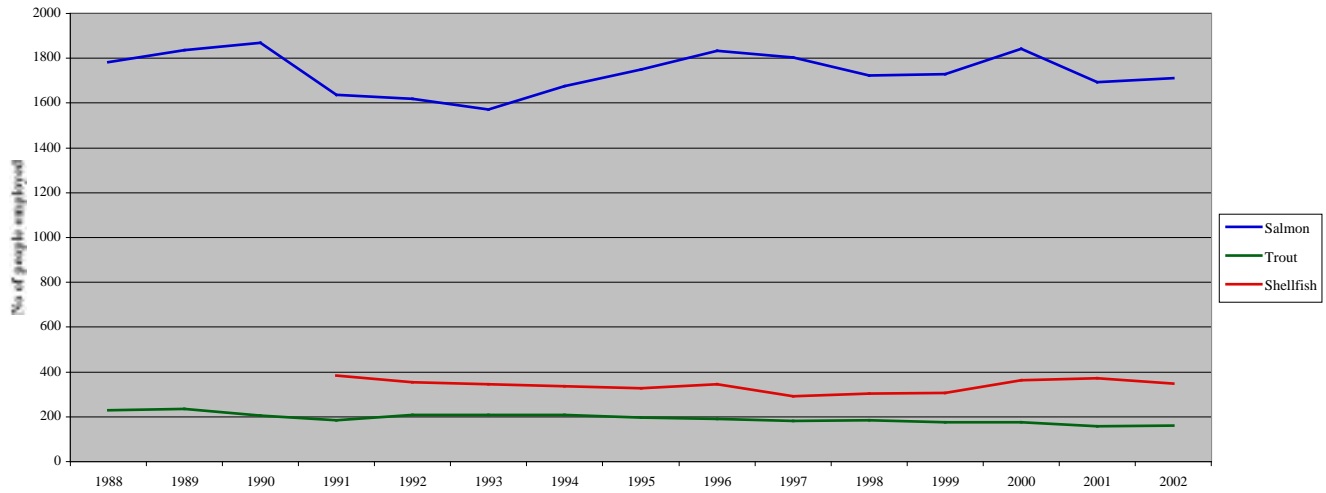


Table 37. Production of farmed fish and shellfish, staff employed, Scotland, 1998 to 2002

	1998	1999	2000	2001	2002
Atlantic salmon (1) - full time	1,117	1,036	1,141	1,066	1083
- part time	192	268	256	191	223
Atlantic salmon eggs/smolts (2) - full time	318	300	341	317	312
- part time	96	124	103	111	93
Rainbow trout - full time	137	126	121	118	114
- part time	49	51	47	41	46
Other species - full time	na	54	73	75	69
- part time	na	18	25	22	30
Shellfish - full time	116	118	138	137	128
- part time	187	190	225	235	219

Source: Fisheries Research Services

Chart 16. Farmed fish and shellfish labour, Scotland, 1988 to 2002



Source: Fisheries Research Services

Notes

1. Scottish based and registered vessels

The statistics in this volume are produced mainly from the Scottish Executive Rural Affairs Department's database, which records details of sea fish landings into Scotland and landings by Scottish based vessels abroad (i.e. those which are licensed by Scottish ports). Under devolution, a Scottish vessel is one, which is registered on the UK register of Seamen and Shipping at a Scottish port.

2. Base district/creek

Defined as the geographical area in which most of the owners of a vessel live and which includes the fishery office responsible for the issue of licences for that vessel. A creek is subdivision of a district

3. Fishing methods

Demersal trawl

The gear consists of a net in the shape of a funnel attached to the vessel by wire ropes or 'warps'. As the net is towed over the sea floor the mouth is kept open by a combination of boards, floats and weights. The tail end of the net where the fish are trapped is the 'cod end'. The length of the warp is normally about three and a half to four times the depth of the water and can be used in depths of 100 to 450 metres from the stern of the vessel. Other single-vessel trawling methods (Industrial, Queen Scallop, Shrimp, and Nephrop) follow the same principal. Nephrop trawl is used by 'inshore' vessels in the 10 to 25 metre length group, many of which are multi-purpose and may also use seine nets; if so rigged, a vessel can tow 2 or smaller type trawls (Nephrop twin/multiple trawls).

Pair (two boat/mid-water) trawl

Used to fish at depths between the surface and the sea floor. The net is towed by two vessels which may be up to 400 metres apart, the depth of the net being mainly controlled by the length of the warps and the vessels' speed. The method is used by vessels in the inshore fleet for catching both demersal and pelagic species.

Pelagic trawl

Also used at depths between surface and sea floor, but vessel's (or vessels') speed when towing nets is greater than demersal trawling.

Seine nets

Another bottom fishing method. The gear consists of a sac of netting with wings on either side kept in position vertically by floats and weights. Long warps are attached to the net, one of which is initially fastened to a flagpole passed through a buoy ('dahn buoy'). The vessel steams forward paying out warp, then the net itself, then more warp to form a triangle back to the dahn, which may be 1 to 3 km from the net. The vessel then steams ahead causing the warps to herd the fish into the path of the net, which is then winched aboard.

Purse seine

This method involves complete encirclement of a shoal or an area known to contain fish. The net, which may be up to 1.2 km long and 240 metres deep, is shaped like a purse. One end is first attached to a buoy, and the vessel then steams round the shoal paying out the net as it goes. On return to the buoy, the net is closed at the foot or 'pursed'. It is then winched to the side of the vessel and the fish taken on board by means of a fish pump. This gear requires relatively heavy equipment and is not generally suitable for vessels below 20 metres. It is used to catch pelagic species (mainly herring, mackerel, sprats). Ring nets are similar except that the net is much smaller and operated by two vessels, although the use of ring nets is now uncommon.

Beam trawl

The beam trawl is a bottom fishing trawl net, used mainly for catching flatfish with the headrope attached to a beam towed along the bottom on runners at either end. The net is heavily weighted with a chain on the underside and has tickler chains running in front.

Gill nets

Sheets of netting, each about 35 metres long and totalling up to 1,500 metres or more, are paid out to form a curtain or barrier in the path of on-coming fish. The net is kept vertical by floats on the headrope and a heavy footrope, the fish being caught in the mesh by their gills. For white fish the nets are anchored near to the sea floor from which they are made to stand upright (by floats) like a fence.

Great lines

These are lines of thin rope totalling up to 15,000 metres long with hooks attached at intervals. The hooks are baited and the lines then laid along the sea floor, their position being marked by floats at each end. This method is particularly suitable for rocky and uneven grounds where other methods may be impractical. It is used by vessels in the 25 to 30 metre group, although few use the method now.

Small lines

Work on the same principle as Great Lines, but the vessels using the method are smaller and are usually at sea only one day at a time.

Creels

These are traps or pots used to catch shellfish, especially lobsters, nephrops and crabs. The pots are generally made from a combination of wood cane and netting. They are normally arranged on the sea floor in lots between 10 and 50, depending on the capacity of the vessel.

Mechanical dredge

Used to catch scallops, queen scallops and cockles. The gear consists of a steel-framed mouth attached to a bag of light metal link chain. As the dredge is towed along the sea floor, metal teeth attached to the underside of the mouth rake the shellfish into the bag. The number of dredges on the vessel - which may be up to 20 metres - may vary depending on its power and size.

Suction dredge

Consists of a sledge dredge, which is towed along the sea bottom and a suction pipe, which transfers the cockles from the dredge to the vessel. Another method uses the suction pipe to blow sand clear of the shellfish, which are then gathered by hand by divers.

Fish photograph on cover courtesy of:
Tom McInnes, FRS Marine Laboratory

© Crown copyright 2003

This document is produced from 100% Elemental Chlorine-free,
environmentally preferred material and is 100% recyclable.

Astron B32327 9/2003

£12.00

