

Labour Force Survey May-Jul 2019

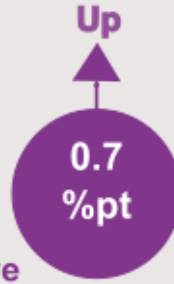
74.9%

of people aged 16 to 64 were in employment



4.0%

of people economically active aged 16 years and above were unemployed



21.9%

of people aged 16 to 64 were economically inactive



Employment rate

Unemployment rate

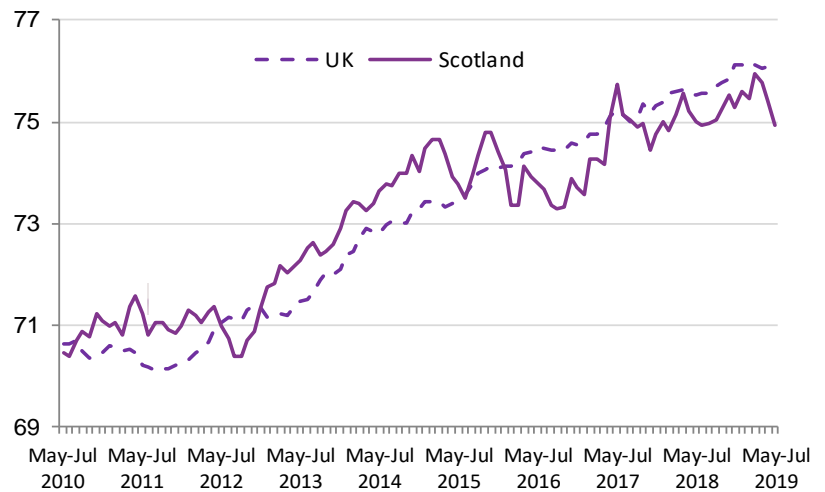
Inactivity rate

Changes shown above are for May-Jul 2019 compared with Feb-Apr 2019

The employment rate in Scotland was 74.9 per cent. This is 1.0 percentage points down on the quarter and 0.1 percentage points down on the year.

The UK employment rate was 76.1 per cent. This is no change on the quarter and 0.6 percentage points up on the year.

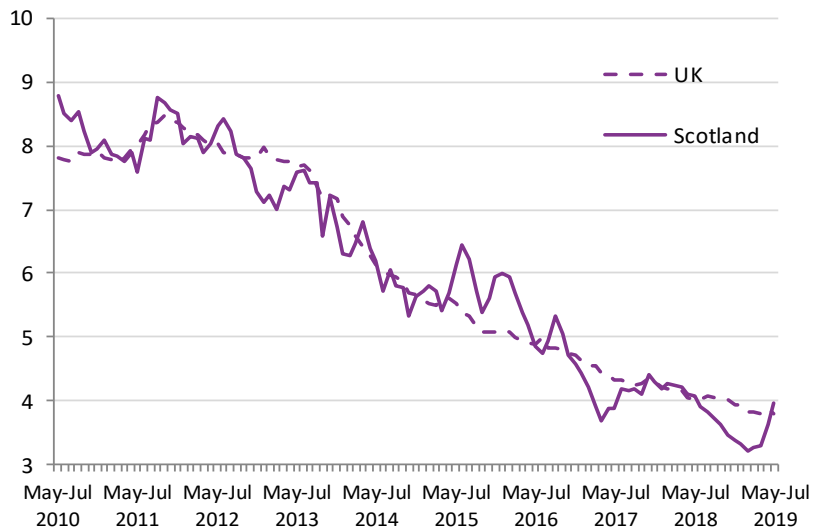
Employment rate



The unemployment rate in Scotland was 4.0 per cent. This is 0.7 percentage points up on the quarter and 0.1 percentage points down on the year.

The UK unemployment rate was 3.8 per cent. This is no change on the quarter and 0.2 percentage points down on the year.

Unemployment rate

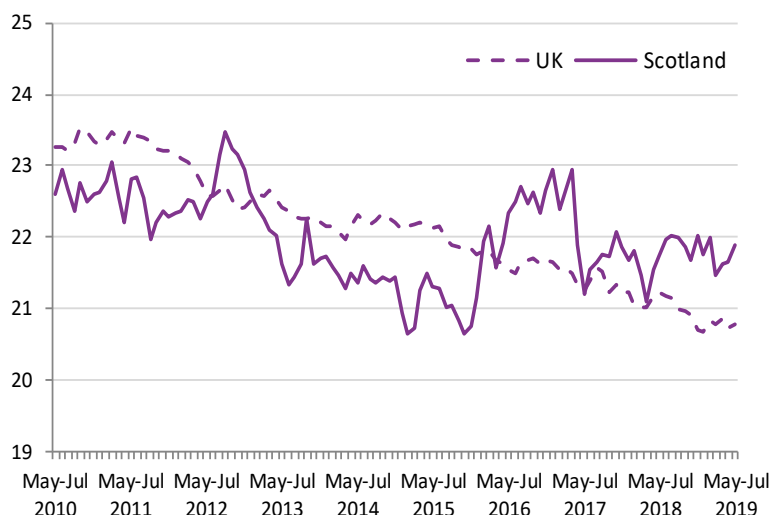


Labour Force Survey May-Jul 2019

The inactivity rate in Scotland was 21.9 per cent. This is 0.4 percentage points up on the quarter and 0.2 percentage points up on the year.

The UK inactivity rate was 20.8 per cent. This is no change on the quarter and 0.5 percentage points down on the year.

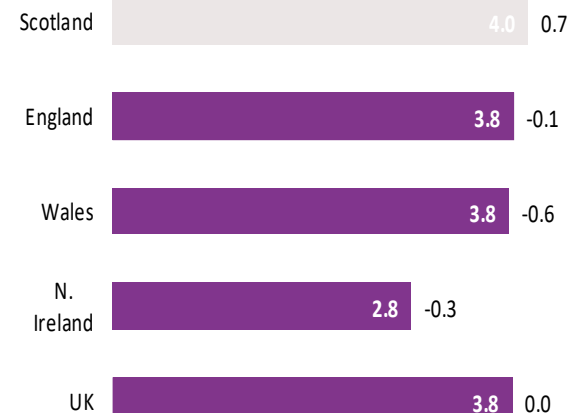
Inactivity rate



Employment rate (%) | Change on quarter*



Unemployment rate (%) | Change on quarter*



*percentage point

Scotland and UK labour market statistics for May to Jul 2019

	Rate (%)	Change on quarter, Feb-Apr 2019	Change on year, May-Jul 2018
Scotland			
Employment ^A	74.9	-1.0	-0.1
Unemployment ^B	4.0	0.7	-0.1
Inactivity ^A	21.9	0.4	0.2
UK			
Employment ^A	76.1	0.0	0.6
Unemployment ^B	3.8	0.0	-0.2
Inactivity ^A	20.8	0.0	-0.5

	Level ('000)	Change on quarter, Feb-Apr 2019	Change on year, May-Jul 2018
Scotland			
Employment ^C	2,669	-33	8
Unemployment ^C	110	19	-3
Inactivity ^D	754	14	5
UK			
Employment ^C	32,777	31	369
Unemployment ^C	1,294	-11	-64
Inactivity ^D	8,587	6	-171

Source: Labour Force Survey, Seasonally adjusted

A: Denominator all persons 16-64; B: Denominator total economically active; C: All persons aged 16+; D: All persons aged 16-64

Labour Force Survey May-Jul 2019

Scotland and UK labour market statistics for women, May to Jul 2019

	Rate (%)	Change on		Level ('000)	Change on		
		quarter	year		quarter	year	
		Feb-Apr 2019	May-Jul 2018		Feb-Apr 2019	May-Jul 2018	
Scotland				Scotland			
Employment ^A	71.7	-1.0	0.3	Employment ^C	1,300	-16	7
Unemployment ^B	3.5	0.6	0.0	Unemployment ^C	48	8	0
Inactivity ^A	25.6	0.6	-0.3	Inactivity ^D	451	10	-6
UK				UK			
Employment ^A	72.1	0.1	1.1	Employment ^C	15,517	60	284
Unemployment ^B	3.6	0.0	-0.4	Unemployment ^C	583	-2	-56
Inactivity ^A	25.2	-0.1	-0.8	Inactivity ^D	5,223	-17	-159

Source: Labour Force Survey, Seasonally adjusted

A:Denominator all persons 16-64; B:Denominator total economically active; _C: All persons aged 16+; D:All persons aged 16-64

Scotland and UK labour market statistics for men, May to Jul 2019

	Rate (%)	Change on		Level ('000)	Change on		
		quarter	year		quarter	year	
		Feb-Apr 2019	May-Jul 2018		Feb-Apr 2019	May-Jul 2018	
Scotland				Scotland			
Employment ^A	78.3	-1.0	-0.5	Employment ^C	1,369	-17	1
Unemployment ^B	4.3	0.8	-0.2	Unemployment ^C	62	11	-3
Inactivity ^A	18.0	0.2	0.7	Inactivity ^D	302	4	11
UK				UK			
Employment ^A	80.2	-0.1	0.1	Employment ^C	17,261	-29	86
Unemployment ^B	4.0	0.0	-0.1	Unemployment ^C	710	-8	-8
Inactivity ^A	16.4	0.1	-0.1	Inactivity ^D	3,364	23	-11

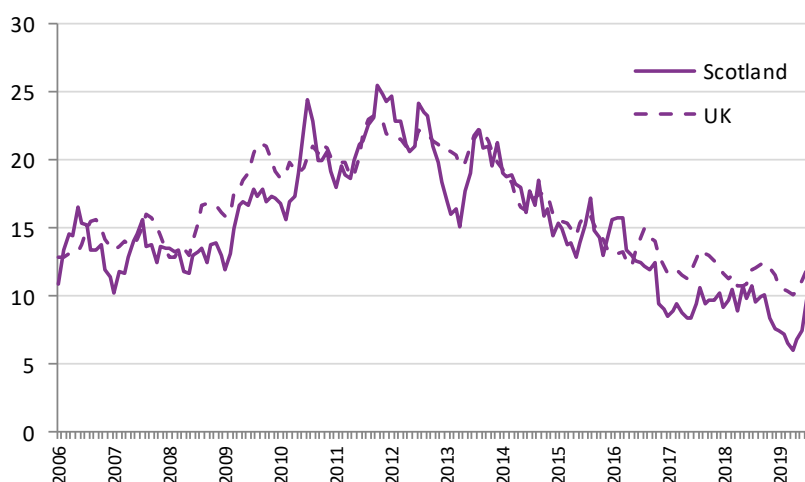
Source: Labour Force Survey, Seasonally adjusted

A:Denominator all persons 16-64; B:Denominator total economically active; _C: All persons aged 16+; D:All persons aged 16-64

The youth unemployment rate in Scotland was 10.1 per cent down 0.7 percentage points from a year ago and down 3.3 percentage points from 2008.

The UK youth unemployment rate was 12.1 per cent up 0.1 percentage points from a year ago and down 3.3 percentage points from 2008.

Youth (16-24 years) unemployment rate



Labour Force Survey May-Jul 2019

Scotland and UK labour market statistics for people (16-24 years), May to Jul 2019

	Rate		
	Rate (%)	Change on	Change on
		May-Jul 2018	May-Jul 2008
Scotland			
Employment	58.4	2.1	-2.0
Unemployment	10.1	-0.7	-3.3
Inactivity	35.0	-1.9	4.7
UK			
Employment	54.5	-0.2	-2.3
Unemployment	12.1	0.1	-3.3
Inactivity	38.0	0.1	5.1

	Level		
	Level ('000)	Change on	Change on
		May-Jul 2018	May-Jul 2008
Scotland			
Employment	331	6	-35
Unemployment	37	-2	-19
Inactivity	198	-15	14
UK			
Employment	3,764	-62	-343
Unemployment	517	-1	-230
Inactivity	2,625	-23	248

Source: Labour Force Survey, Not Seasonally adjusted

For 16-24 years A:Denominator all persons; B:Denominator total economically active ; _C: All persons ; D:All persons

About the Labour Force Survey

These statistics follow the ONS publication of Regional Labour market Statistics from the same sources and will be published at 9.45 am on the day of the ONS release.

This month data are presented for the 3 months to Jul 2019, compared with the quarter before (Feb to Apr 2019) and compared with a year before (May to Jul 2018).

Youth data are presented for the 3 months to Jul 2019 compared with the same quarter a year ago and in 2008.

Please note percentage point changes are based on unrounded data.

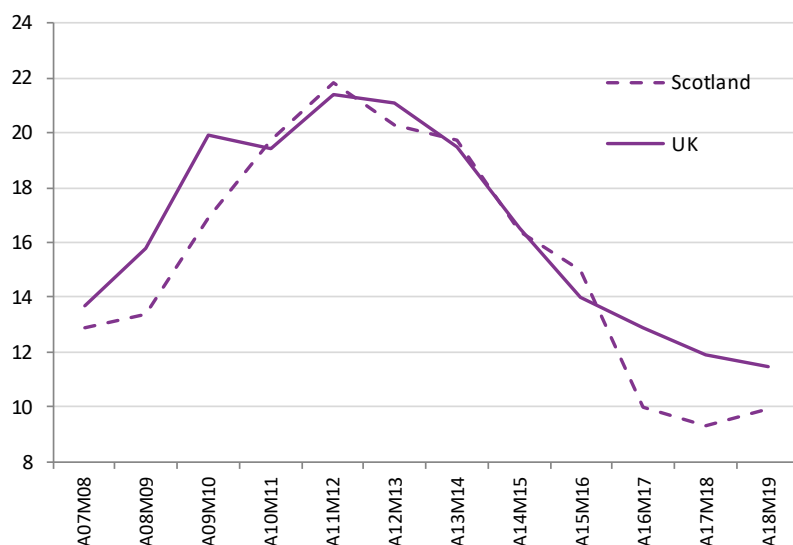
Annual Population Survey, April 2018 to March 2019

Based on the latest Annual Population Survey for April to March 2019

The youth unemployment rate in Scotland was 9.9%, up 0.6 percentage points over the year and down 3.0 percentage points since 2008.

The UK youth unemployment rate was 11.5%, down 0.4 percentage points over the year and down 2.2 percentage points since 2008.

Youth (16-24 years) unemployment rate



Scotland and UK labour market statistics for people (16-24 years), Apr 2018 to Mar 2019

	Rate (%)	Change on year	Change on 2008		Level ('000)	Change on year	Change on 2008
Scotland				Scotland			
Employment ^A	58.3	-0.5	-3.4	Employment ^C	335	-9	-36
Unemployment ^B	9.9	0.6	-3.0	Unemployment ^C	37	1	-18
Inactivity ^A	35.3	0.1	6.1	Inactivity ^D	203	-3	27
UK				UK			
Employment ^A	53.9	-0.1	-3.3	Employment ^C	3,760	-50	-344
Unemployment ^B	11.5	-0.4	-2.2	Unemployment ^C	489	-28	-161
Inactivity ^A	39.0	0.3	5.3	Inactivity ^D	2,722	-13	303

Source: Annual Population Survey, April 2018 to March 2019

For 16-24 years A:Denominator all persons; B:Denominator total economically active ; _C: All persons ; D:All persons
Compared over the year with April 2017 to March 2018, Change on 2008 compares with April 2008 to March 2009

About the Annual Population Survey

The Annual Population Survey (APS) combines results from the Labour Force Survey (LFS) and the English, Welsh and Scottish Labour Force Survey boosts increasing the sample size in Scotland, which means the APS can provide more robust labour market estimates compared to the main Labour Force Survey, for local areas and smaller groups of the population, in this case for people aged 16 to 24 years.

The Scottish Government funds the boost to the Labour Force Survey sample in Scotland, taking the sample size from approximately 5,000 households each year to 17,000.

Contact Labour Market Statistics team

Tel: 0131 244 6783 Email: lmstats@gov.scot

Published: 10th September 2019