

PUBLIC SERVICES AND GOVERNMENT

Council Tax Reduction in Scotland, October to December 2015

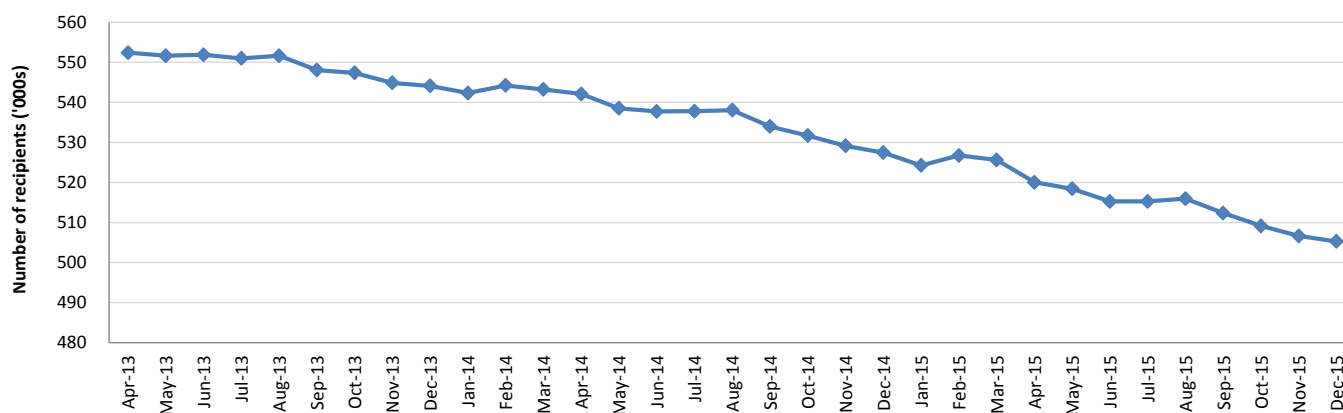
This publication provides statistics on the Council Tax Reduction (CTR) scheme, which reduces the Council Tax liability of vulnerable people in Scotland. A CTR 'recipient' can be a single person or a couple, with or without children, since Council Tax is charged on a per-dwelling basis, rather than to individuals.

The statistics are based on data extracts from local authorities, and cover the time period October to December 2015.

Key Points

- There were 505,270 Council Tax Reduction recipients in Scotland in December 2015.
- The total weekly income foregone by local authorities on Council Tax Reduction in December 2015 was £6.4 million.
- The total number of Council Tax Reduction recipients in Scotland has gradually decreased by 8.5 per cent (47,110 recipients) between the beginning of the scheme in Scotland in April 2013, and December 2015.

Chart 1: CTR recipients in Scotland, April 2013 to December 2015



The number of recipients for each local authority in October, November and December 2015 is shown in Table 1. The total number of recipients in Scotland decreased from 512,340 in September 2015 to 505,270 in December 2015. This is similar to the pattern seen in the same months in previous years.

Table 1: CTR Recipients by Local Authority, October to December 2015 ^{1, 2}

	Oct-15	Nov-15	Dec-15
SCOTLAND	509,140	506,640	505,270
Aberdeen City	13,450	13,520	13,580
Aberdeenshire	11,350	11,410	11,480
Angus	8,950	8,890	8,910
Argyll and Bute	7,240	7,220	7,180
Clackmannanshire	5,490	5,510	5,460
Dumfries and Galloway	13,650	13,620	13,570
Dundee City	18,580	18,460	18,430
East Ayrshire	14,480	14,410	14,370
East Dunbartonshire	5,810	5,740	5,740
East Lothian	7,610	7,590	7,580
East Renfrewshire	4,840	4,800	4,780
Edinburgh, City of	36,610	36,470	36,470
Eilean Siar	2,460	2,470	2,450
Falkirk	14,290	14,230	14,210
Fife	32,650	32,420	32,250
Glasgow City	94,690	94,120	93,520
Highland	17,550	17,510	17,580
Inverclyde	10,200	10,140	10,100
Midlothian	7,010	6,980	6,960
Moray	5,940	5,900	5,900
North Ayrshire	18,150	18,000	17,860
North Lanarkshire	39,120	38,930	38,820
Orkney Islands	1,240	1,230	1,270
Perth and Kinross	9,400	9,370	9,380
Renfrewshire	19,300	19,140	19,120
Scottish Borders	9,010	9,050	8,980
Shetland Islands	1,040	1,040	1,050
South Ayrshire	11,810	11,750	11,670
South Lanarkshire	32,370	32,110	32,040
Stirling	6,050	6,010	6,010
West Dunbartonshire	13,070	12,960	12,930
West Lothian	15,720	15,650	15,630

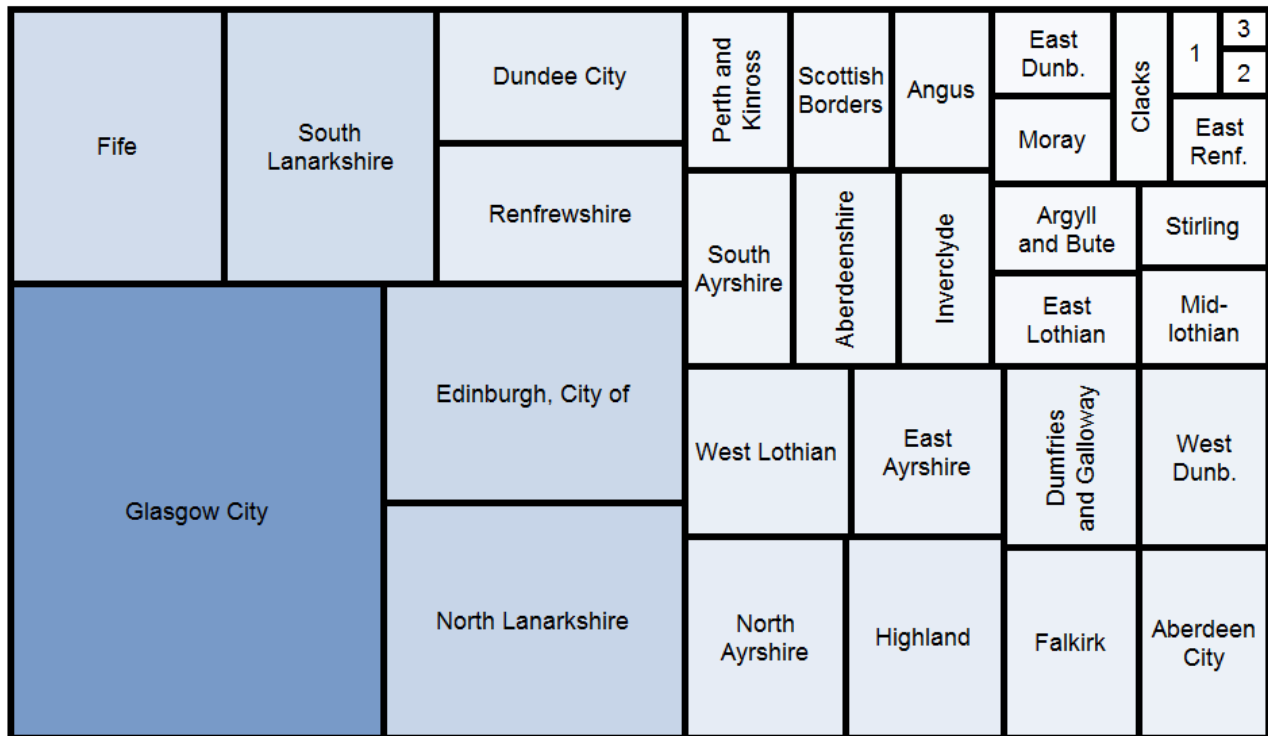
Notes:

¹ Recipients are as at monthly count date. See Methodology Notes, Section 2 for more details. Available at <http://www.gov.scot/Topics/Statistics/Browse/Local-Government-Finance/Methodology/Ctaxreductionmethod>

² Figures are rounded to the nearest 10. Components may not sum to total due to rounding.

Figure 1 shows CTR recipients by local authority for December 2015 in a treemap, using the data from Table 1. This allows a visual comparison of the number of recipients in each local authority. The five local authorities with the highest numbers of CTR recipients accounted for almost half (46 per cent) of the total for Scotland in December 2015. Glasgow City accounted for the highest proportion of Scotland's CTR recipients, with 19 per cent (93,520) of the total. The other four authorities with the highest proportion of CTR recipients were North Lanarkshire, accounting for 8 per cent (38,820 recipients); Edinburgh City, accounting for 7 per cent (36,470 recipients); and Fife and South Lanarkshire, accounting for 6 per cent each (32,250 and 32,040 recipients respectively).

Figure 1: Treemap of CTR recipients by Local Authority, December 2015



Key: 1 = Eilean Siar
 2 = Orkney Islands
 3 = Shetland Islands
 Clacks = Clackmannanshire
 East Dunb. = East Dunbartonshire
 East Renf. = East Renfrewshire
 West Dunb. = West Dunbartonshire

The total weekly income foregone for each local authority in October, November and December 2015 is shown in Table 2. The total for Scotland decreased slightly to £6.4 million in December, reflecting the decrease in the number of recipients.

Table 2: CTR weekly estimate of income foregone (£000's) by Local Authority, October to December 2015 ^{1, 2, 3}

	Oct-15	Nov-15	Dec-15
SCOTLAND	6,460.1	6,425.5	6,405.7
Aberdeen City	176.1	176.8	177.5
Aberdeenshire	139.3	139.8	140.5
Angus	99.8	99.1	99.6
Argyll and Bute	102.3	102.1	101.4
Clackmannanshire	66.6	66.8	66.1
Dumfries and Galloway	161.3	161.1	160.5
Dundee City	231.2	229.3	228.8
East Ayrshire	176.4	175.5	175.4
East Dunbartonshire	85.7	84.4	84.4
East Lothian	99.6	99.2	99.1
East Renfrewshire	69.9	69.4	69.1
Edinburgh, City of	491.3	489.1	488.3
Eilean Siar	27.3	27.4	27.2
Falkirk	157.1	156.3	156.0
Fife	386.3	383.6	380.9
Glasgow City	1,304.0	1,295.9	1,286.8
Highland	227.7	227.1	228.1
Inverclyde	125.8	125.0	124.2
Midlothian	96.8	96.4	96.1
Moray	70.5	70.1	70.0
North Ayrshire	222.6	221.0	219.3
North Lanarkshire	454.5	452.0	450.7
Orkney Islands	14.1	14.0	14.4
Perth and Kinross	123.8	123.2	123.5
Renfrewshire	246.2	244.3	243.8
Scottish Borders	102.7	103.0	102.4
Shetland Islands	11.8	11.8	11.9
South Ayrshire	159.2	158.1	157.1
South Lanarkshire	388.1	385.0	384.0
Stirling	81.4	81.1	81.0
West Dunbartonshire	174.3	172.4	172.1
West Lothian	186.5	185.3	185.3

Notes:

¹ Recipients are as at monthly count date. See Methodology Notes, Section 2 for more details. Available at <http://www.gov.scot/Topics/Statistics/Browse/Local-Government-Finance/Methodology/Ctaxreductionmethod>

² Weekly income foregone estimates are based on 'number of recipients multiplied by average weekly reduction' for each local authority and benefit type for the given month.

³ Figures are rounded to the nearest £100. Components may not sum to total due to rounding.

An Official Statistics publication for Scotland

Official and National Statistics are produced to high professional standards set out in the Code of Practice for Official Statistics. Both undergo regular quality assurance reviews to ensure that they meet customer needs and are produced free from any political interference.

Correspondence and Enquiries

For enquiries about this publication, please contact:

Council Tax Analysis
Local Government and Analytical Services Division
Telephone: 0131 244 7192
E-mail: louise.cuthbertson@gov.scot

For general enquiries about Scottish Government statistics, please contact:

Office of the Chief Statistician
Telephone: 0131 244 0442
E-mail: statistics.enquiries@gov.scot

How to access background or source data

The data collected for this statistical bulletin:

- are available in more detail through Scottish Neighbourhood Statistics
- are available via an alternative route
- may be made available on request, subject to consideration of legal and ethical factors. Please contact louise.cuthbertson@gov.scot for further information.
- cannot be made available by Scottish Government for further analysis as Scottish Government is not the data controller

Complaints and Suggestions

If you are not satisfied with our service or have any comments or suggestions, please write to:

The Chief Statistician
3WR, St. Andrew's House
Edinburgh
EH1 3DG
Telephone: 0131 244 0302
Email: statistics.enquiries@gov.scot

If you would like to be consulted about statistical collections or receive notification of publications, please register your interest at www.gov.scot/scotstat. Details of forthcoming publications can be found at www.gov.scot/statistics.

ISBN 978-1-78652-044-9

Crown Copyright

You may use or re-use this information (not including logos) free of charge in any format or medium, under the terms of the Open Government Licence. See: www.nationalarchives.gov.uk/doc/open-government-licence/.