

Home Care Services, Scotland, 2012

Published:

A National Statistics Publication for Scotland



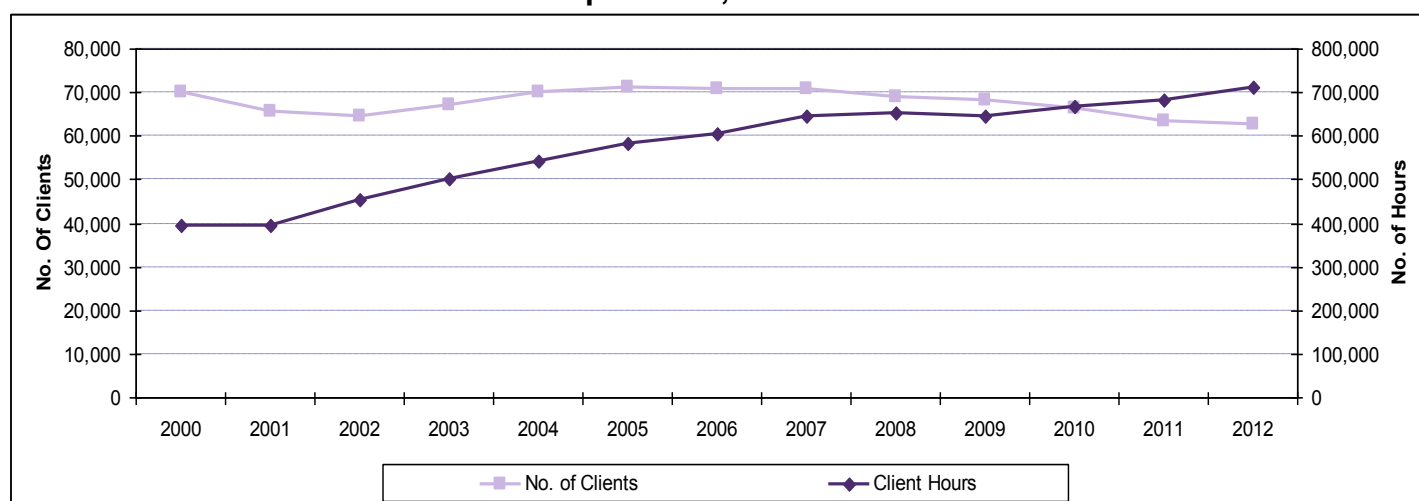
1. Introduction and key points

The purpose of this Statistics Release is to present the latest national figures for Home Care Services provided or purchased by local authorities in Scotland. All local authorities in Scotland provide Home Care Services which give people the support, practical help and personal care that they need to live as independently as possible in the community.

A substantially revised Home Care Services statistical data collection was introduced in 2010. Information is now collected for each person who receives a Home Care Service, a Meals Service and a Community Alarm or Telecare Service. Definitions have been kept consistent (where applicable) to maintain trends over time except for client groups. Client groups and definitions were revised in 2010, and multiple client groups were allowed for the first time. Client group analysis over time should therefore be treated with caution. Further details can be found in Section 4 'Background information on the collection of the data'.

All figures relate to the last week in March (that is the week which includes 30th March 2012) and are provisional and, as such, may be subject to change. The final figures will be published in future publications.

Chart 1: Home Care clients and hours provided, 2000-2012



Source: Home Care Statistical Return (See Annex Table 2)

Key points

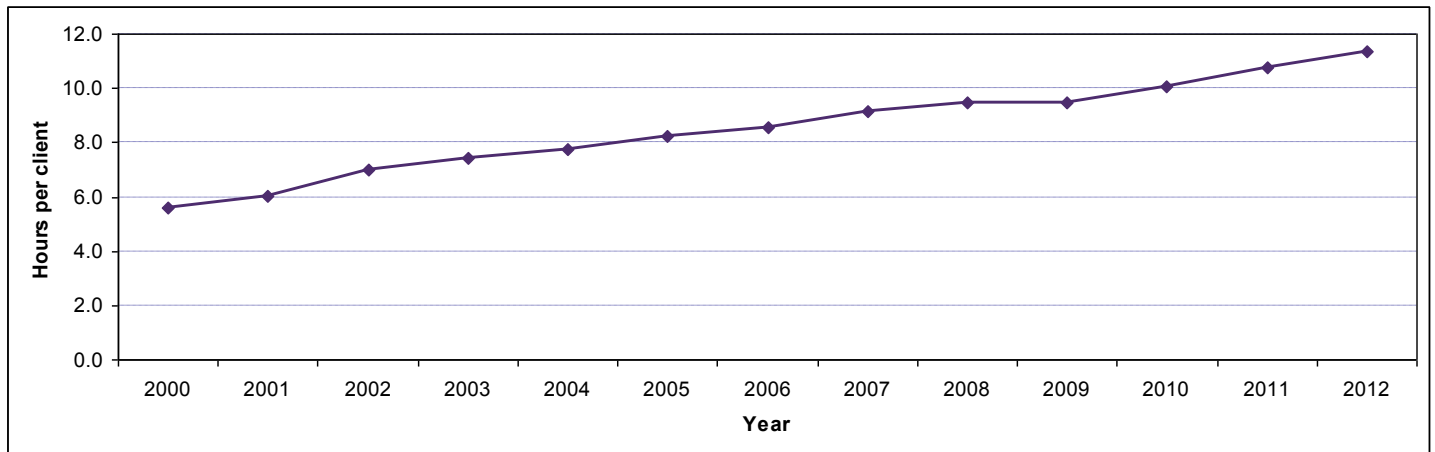
- In the last week in March 2012, there were 62,832 Home Care clients. The number of Home Care clients has declined over the last 5 years - after an increase in clients each year between 2002 and 2005 and a levelling in 2006 and 2007 (Chart 1).
- The number of hours of Home Care provided to clients has increased, by around 4 per cent over the latest year to 712,894 hours (Chart 1).
- The average hours received by each client in a week has increased steadily (apart from a very slight decrease between 2008 and 2009), from 5.6 in 2000 to 11.3 in 2012. (Chart 2).
- The number of older people (aged 65 and over) receiving a home care service was around 57 clients per 1,000 population as at the last week in March 2012.
- Of the 62,832 home care clients in the last week in March 2012:
 - 33,937 (54 per cent) of Home Care clients also had a Community Alarm or another Telecare Service.
 - 6,460 (10 per cent) of Home Care clients also received a Meals Service.
- There were a total of 110,088 clients who had a Community Alarm and/or another Telecare Service as at the last week in March 2012.

2. Home Care Services

There was an estimated 712,894 hours of service provided to 62,832 clients in 2012. The number of clients has fluctuated over time from 70,210 in 2000 increasing to a peak of 71,094 in 2005, then decreasing to 62,832 in 2012 (see Annex Table 2 & Chart 1).

The number of client hours has increased by 81 per cent since 2000, from 393,071 to 712,894 hours. In 2000 clients received, on average, 5.6 hours of Home Care per week. This has risen steadily to 11.3 hours for 2012 (See Annex Table 2, and Chart 2).

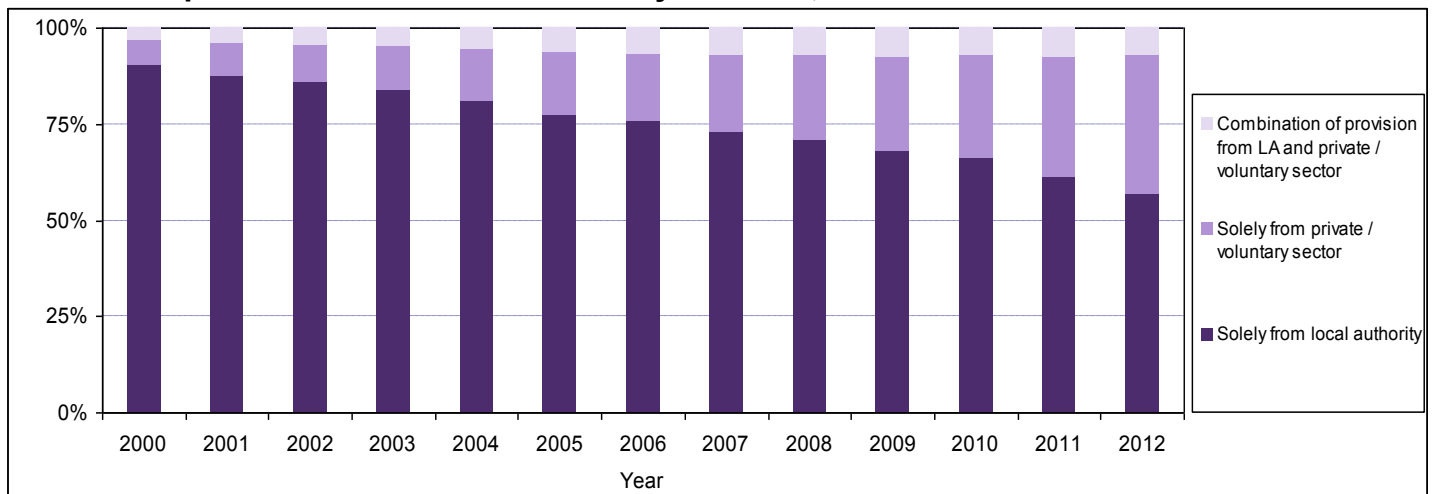
Chart 2: Average Number of Hours Provided per Client, 2000-2012



Source: Home Care Statistical Return (See Annex Table 2)

Of the 62,832 clients who received a Home Care service provided or purchased by a local authority in 2012, 43 per cent received at least part of their Home Care service from a private or voluntary provider - compared to only 10 per cent in 2000 (Table 1 & Annex Table 5).

Chart 3: Proportion of Home Care Clients by Provider, 2000- 2012



Source: Home Care Statistical Return (See Annex Table 5)

Table 1: Number of Home Care Clients and Hours Provided / Purchased by Provider of Service, 2012

Provider of Service	No. Clients	%	Client Hours	%	Hours per client
Solely from local authority	35,588	57%	299,874	42%	8.4
Solely from private/voluntary sector	22,624	36%	348,657	49%	15.4
Combination of provision from LA and private/voluntary sector	4,620	7%	64,362	9%	13.9
Total	62,832	100%	712,894	100%	11.3

Source: Home Care Statistical Return (See Annex Table 5)

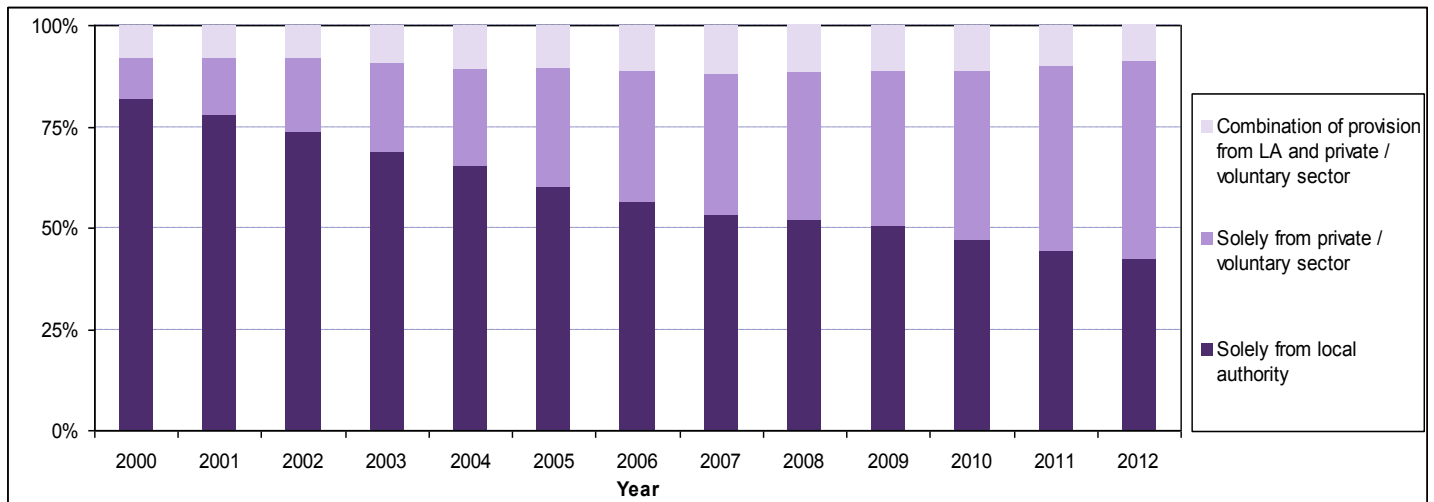
The average number of contact hours per client for those receiving local authority provided services only was 8.4 hours per week, compared to 15.4 hours for those receiving Home Care from a private or voluntary provider only (See Table 1).

348,657 hours were provided to clients receiving Home Care Services solely from the private or voluntary sector. This has increased by 78 per cent since 2006 when 196,297 hours were provided (see Annex Table 5).

Additionally, 64,362 hours (9 per cent) were provided by some combination of local authority, private and voluntary provision as at the last week in March 2012 (See Table 1 & Chart 4).

The proportion of service hours provided solely by local authorities has been decreasing steadily from 82 per cent in 2000 to 42 per cent in 2012. The majority of this decrease is due to the increase in service provided or purchased solely from the voluntary and private sectors (see Annex Table 5 & Chart 4).

Chart 4: Proportion of the Hours of Home Care Service by Provider, 2000 – 2012



Source: Home Care Statistical Return (See Annex Table 5)

Profile of Clients Receiving Home Care Services

Approximately 50 per cent of clients receiving Home Care Services provided or purchased by local authorities were due to 'infirmity due to age'. 28 per cent of clients had physical disabilities. An estimated 66 per cent of clients were female and 34 per cent were male. An estimated 81 per cent of all clients were aged 65 years or over (See Table 2 & Chart 5).

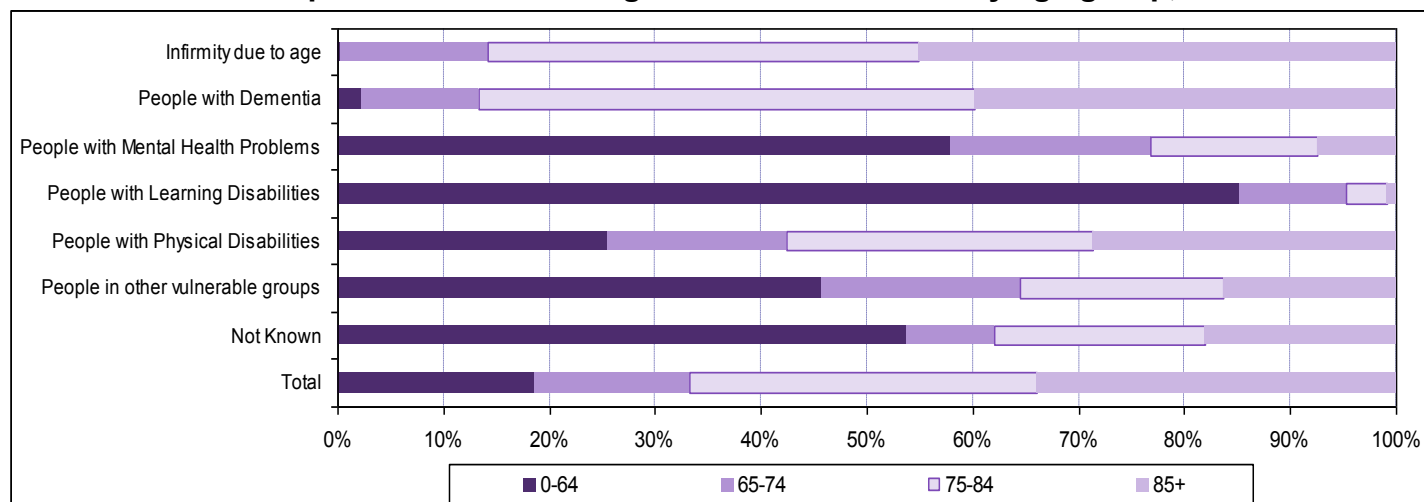
Table 2: Age, Client Group and Gender of Clients Receiving Home Care Services, 2012

Client Group	Age Group				Total Clients	Percentage
	0-64	65-74	75-84	85+		
Infirmary due to age	74	4,378	12,776	14,187	31,415	50%
People with Dementia	74	364	1,536	1,310	3,284	5%
People with Mental Health Problems	1,609	524	439	205	2,777	4%
People with Learning Disabilities	3,912	460	178	38	4,588	7%
People with Physical Disabilities	4,470	2,957	5,082	5,017	17,526	28%
People in other vulnerable groups	954	390	400	342	2,086	3%
Not Known	620	97	230	208	1,155	2%
Male	6,004	3,845	6,511	5,146	21,506	34%
Female	5,709	5,325	14,130	16,161	41,325	66%
Total Clients	11,713	9,170	20,641	21,307	62,831	100%
Male - rate per 1,000 population	2.8	17.2	52.2	148.8	56.2	
Female - rate per 1,000 population	2.6	20.8	79.3	213.6	81.1	

Source: Home Care Statistical Return, Excludes one client with no date of birth provided

*Note: 2011 Mid Year Population Estimates used as 2012 Mid Year Population Estimates are not yet available

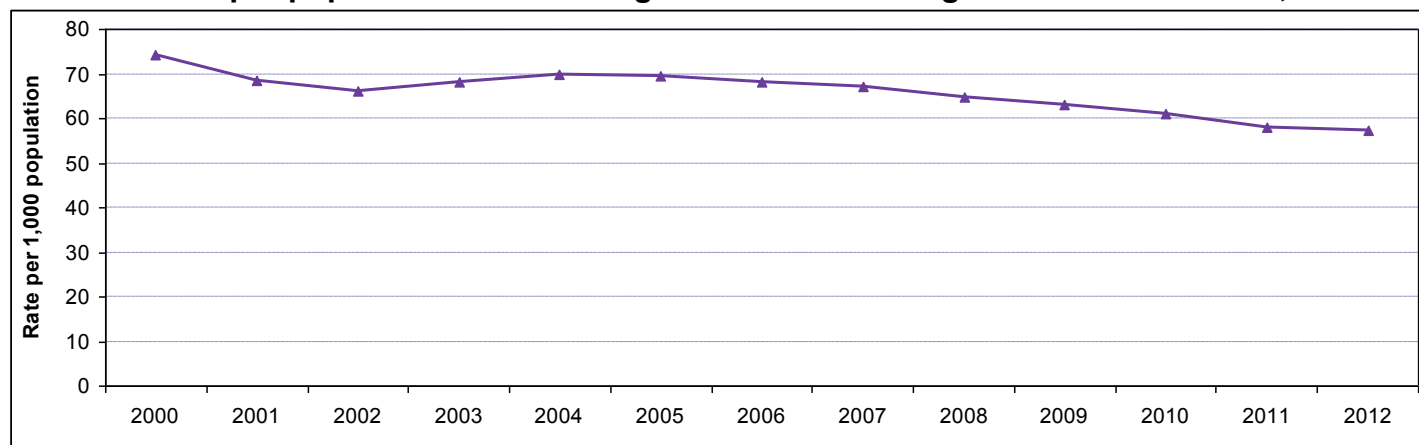
Chart 5: Client Group of Clients Receiving Home Care Services by age group, 2012



Source: Home Care Statistical Return

Chart 6 shows that for older people (aged over 65) the rate per 1,000 population has 74 per 1,000 people to 57 per 1,000 people. This means that a smaller proportion of people aged over 65 are receiving a home care service than in 2000. (See Annex Table 2)

Chart 6: Rates per population of Clients aged over 65 receiving Home Care Services, 2012



Source: Home Care Statistical Return

*Note: 2011 Mid Year Population Estimates used as 2012 Mid Year Population Estimates are not yet available

An estimated 57 per cent of clients in receipt of a Home Care Service were living alone (See Table 3). There is a far higher percentage of clients aged over 65 living alone than compared to those under 65. Note that this information was not provided by all Local Authorities.

Table 3: Living Arrangements of Clients Receiving Home Care Services, 2012

Living Arrangements	Under 65		Over 65		Total ¹	
	Number of clients	% of those known	Number of clients	% of those known	Number of clients	% of those known
Living Alone	3,202	38%	23,727	60%	26,929	57%
Other	5,150	62%	15,528	40%	20,679	43%
Total known clients	8,352	100%	39,255	100%	47,608	100%
Unknown	3,361		11,863		15,224	
TOTALS	11,713		51,118		62,832	

Source: Home Care Statistical Return

Note: 31 Local authorities returned (partial) data on if their clients lived alone. Of these 31 local authorities, 8 provided complete data on whether their clients lived alone.

¹ - Includes one client with no date of birth provided

Level of Home Care Services Provided

In 2012, 27 per cent of under 65's received 20 hours or more Home Care a week compared with 6 per cent of over 65's. An estimated 70 per cent of clients aged 65 and over receive less than 10 hours of home care per week.

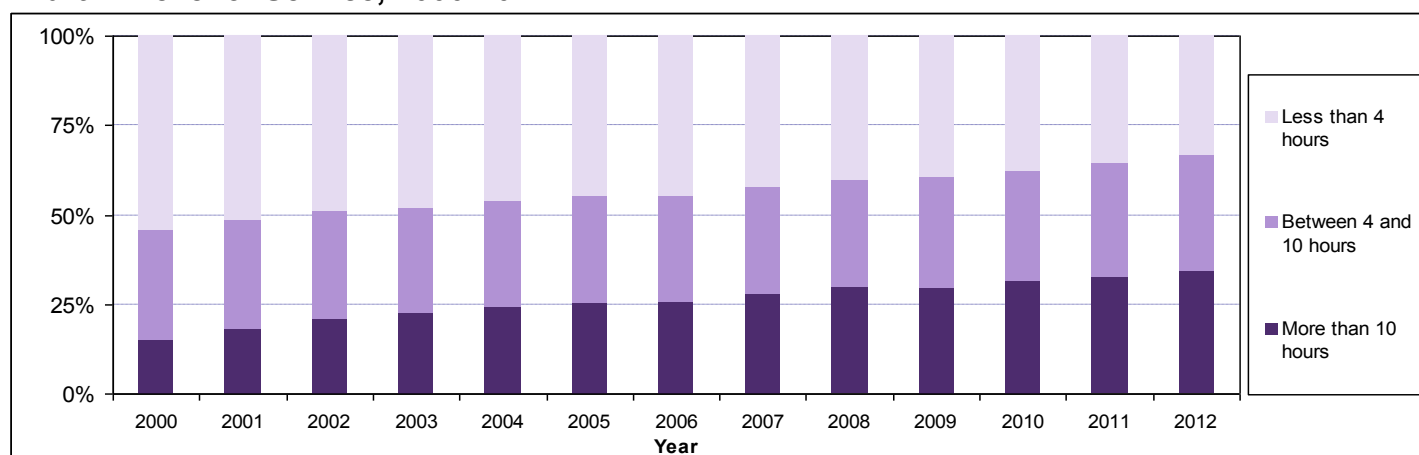
Table 4: Number of Home Care Clients by Level of Service Received, 2012

Level of service	Aged Under 65		Aged 65+		Total number of clients
	No. of clients	%	No. of clients	%	
Less than 1 hour	185	2	1,869	4	2,054
1 hour to less than 2 hours	950	8	5,971	12	6,921
2 hours to less than 4 hours	1,951	17	10,169	20	12,120
4 hours to less than 6 hours	1,287	11	5,937	12	7,224
6 hours to less than 8 hours	1,177	10	7,148	14	8,325
8 hours to less than 10 hours	678	6	4,051	8	4,729
10 hours to less than 15 hours	1,526	13	9,475	19	11,001
15 hours to less than 20 hours	776	7	3,681	7	4,457
20 hours or more	3,183	27	2,817	6	6,000
TOTAL CLIENTS	11,713	100	51,118	100	62,831

Source: Home Care Statistical Return

Excludes one client with no date of birth provided

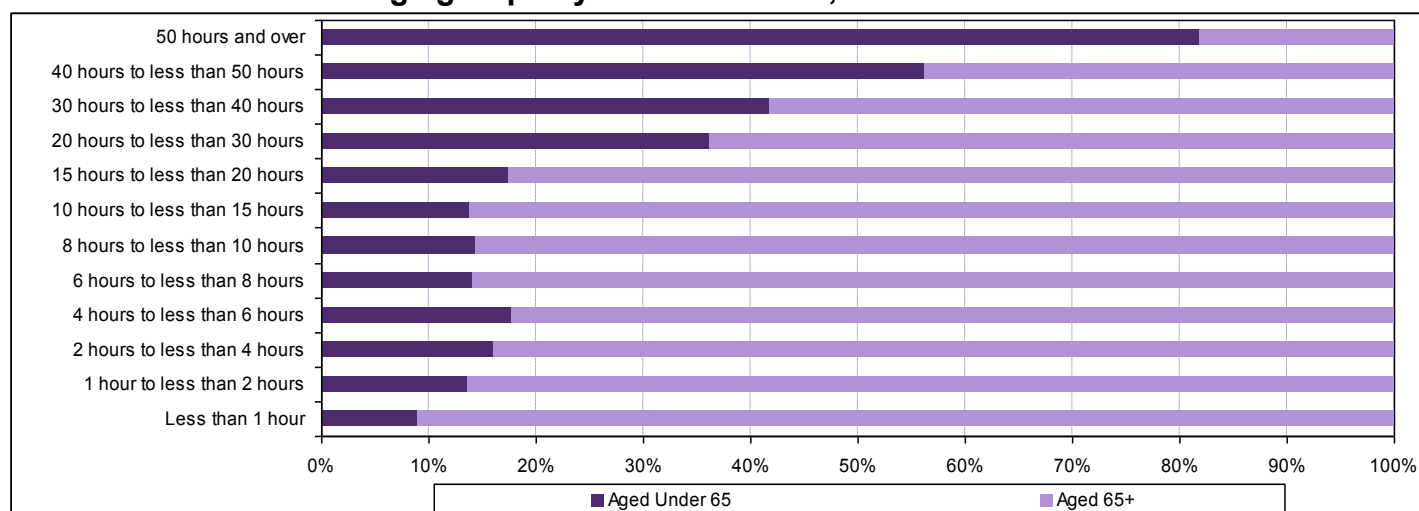
Chart 7: Level of Service, 2000-2012



Source: Home Care Statistical Return (Annex Table 4)

People aged 65 and over account for 90 per cent of people receiving less than 1 hour of Home Care, compared to 18 per cent of all people receiving 50 hours of Home Care or over. Chart 8 also shows that clients aged 65 and over are more likely to receive smaller packages of care than a client aged under 65.

Chart 8: Ratio of clients age groups by level of service, 2012



Source: Home Care Statistical Return

Potential issue with hours data.

More detailed analysis of the hours data has identified a large increasing number of clients being recorded who receiving care packages of 168 hours a week. This equates to a person receiving care 24 hours a day, seven days a week. In 2011, 499 clients received 150+ hours of support per week, this has increased to 574 in 2012.

Further work with local authorities is required to identify the type of care package these clients are receiving as it is suspected that the clients won't be receiving constant care or help but do have support available 24 hours a day. It is more likely that this kind of support should be classed as housing support rather than home care and may be distorting the hours figures presented in this report.

Please refer to annex Table 6 & Chart 12 for more detailed information on the issue.

Home Care clients receiving services in addition to their Home Care service

From 2010 information was collected on Home Care clients who received other services in their own home. These included; Community Alarms, other Telecare and Meals. The 'Background information' (section 4) contains definitions of Community Alarm and 'other Telecare' services.

Diagram 1 – Relationship between home care and other services received by clients

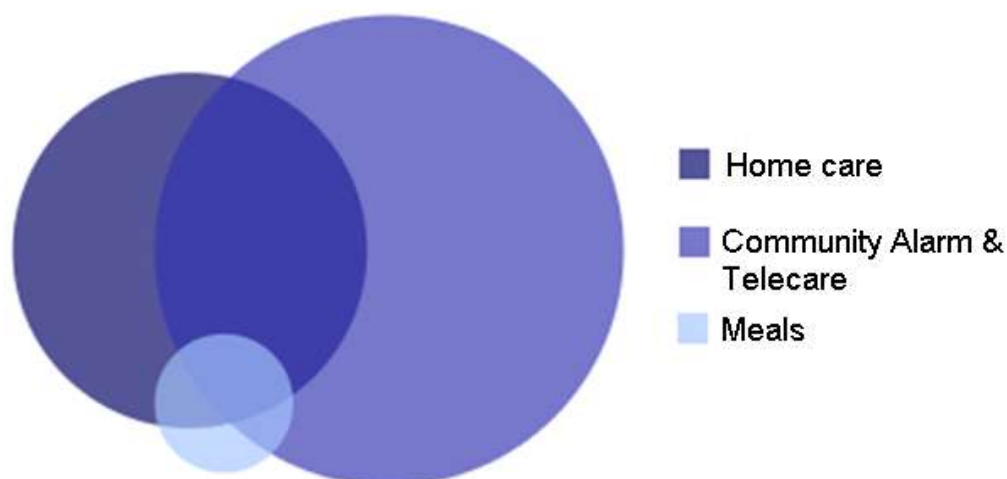


Diagram 1 shows the overlapping relationship of services provided to clients. At March 2012 there were 62,832 clients receiving a home care service, 110,088 clients had a Community Alarm and/or other Telecare services and 9,621 clients received a meals service.

Community Alarm and other Telecare

Table 5 shows that as at March 2012, there were 33,937 (54 per cent) Home Care clients who also had a Community Alarm or another Telecare service. Of the 33,937 Home Care clients who also had a Community Alarm and/or other Telecare services, 79 per cent only had a Community Alarm. Moreover, of the 33,937 Home Care clients who also had a Community Alarm and/or other Telecare services, 89 per cent (30,346 clients) were aged 65 and over.

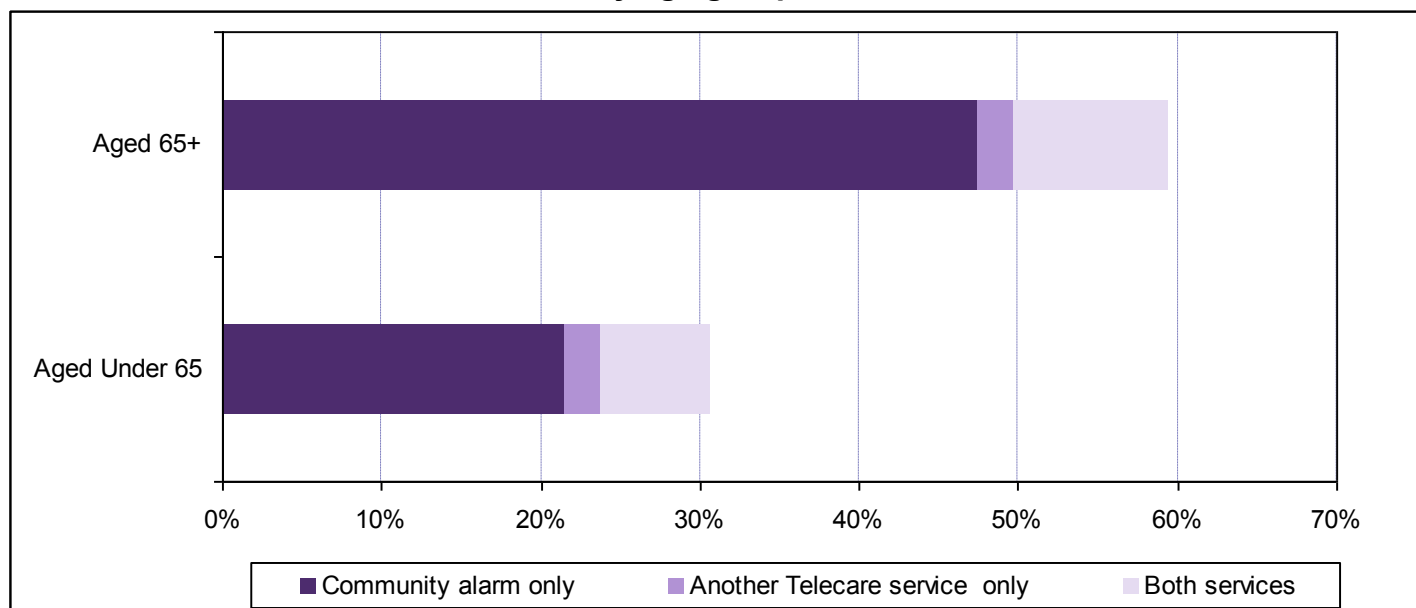
Table 5: Clients who are receiving Home Care and a Community Alarm and/or another Telecare Service by age group, 2012

Age band	Home care clients	Number of Client			Total
		Community alarm only	Another Telecare service only	Both services	
Aged Under 65	11,713	2,527	251	813	3,591
Aged 65+	51,118	24,303	1,118	4,925	30,346
Total	62,831	26,830	1,369	5,738	33,937

Source : Home care statistical return

Excludes one client with no date of birth provided

Chart 9: Percentage of Home Care clients who are receiving Home Care and a Community Alarm and/or another Telecare Service by age group, 2012



Source: Home Care Statistical Return

Table 6: Clients who are receiving Home Care and a Community Alarm and/or another Telecare Service by client group, 2012

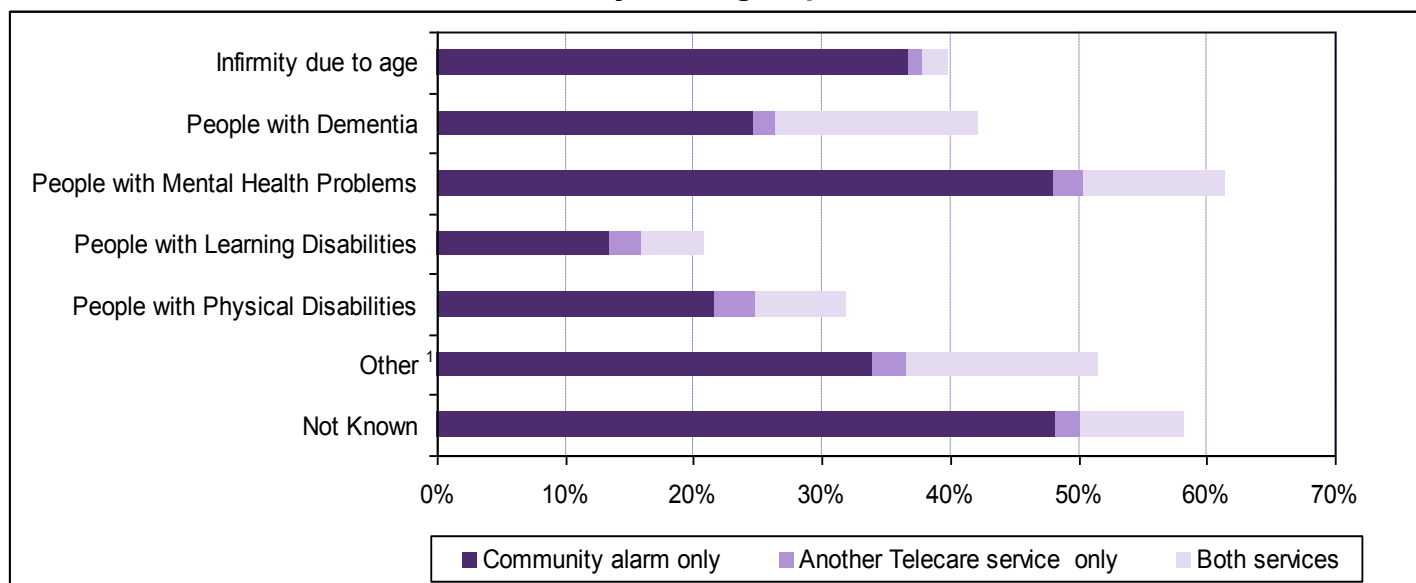
Client Group	Home care clients	Number of Client			
		Community alarm only	Another Telecare service only	Both services	Total
Infirmity due to age	31,416	15,125	639	2,540	18,304
People with Dementia	3,284	1,116	85	492	1,693
People with Mental Health Problems	2,777	603	85	197	885
People with Learning Disabilities	4,588	617	114	224	955
People with Physical Disabilities	17,526	8,429	397	1,934	10,760
Other ¹	2,086	516	36	328	880
Not Known	1,155	424	13	23	460
Total	62,832	26,830	1,369	5,738	33,937

Source : Home care statistical return

¹ Other includes addiction, palliative care and carers

Of the 33,937 clients who received Home Care and had a Community Alarm and/or another Telecare service, 54 per cent were people who had 'infirmity due to age' (18,304), followed by 32 per cent who had physical disabilities (10,760).

Chart 10: Percentage of Home Care clients who are receiving Home Care and a Community Alarm and/or another Telecare Service by client group, 2012



Source: Home Care Statistical Return

¹ Other includes addictions, palliative care and carers

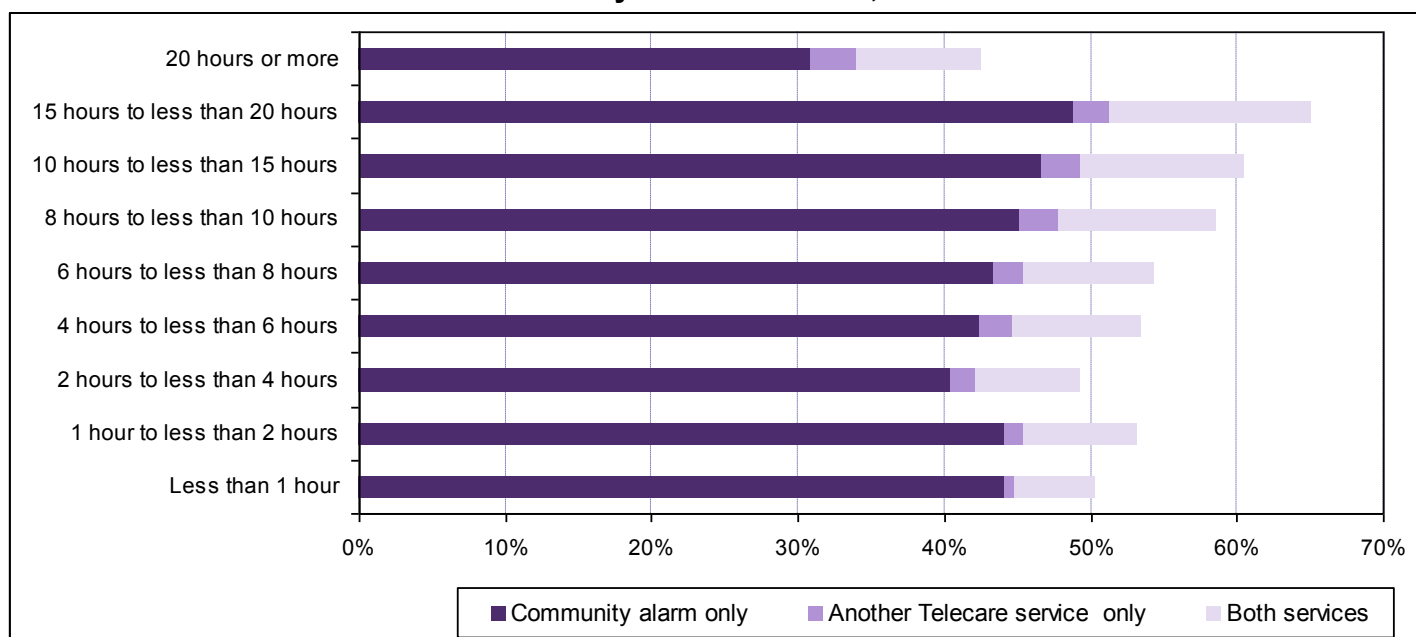
Table 7: Clients who are receiving Home Care and a Community Alarm and/or another Telecare Service by hours of Home Care, 2012

Hours provided	Home care clients	Number of Client			Total
		Community alarm only	Another Telecare service only	Both services	
Less than 1 hour	2,054	908	12	114	1,034
1 hour to less than 2 hours	6,921	3,055	88	536	3,679
2 hours to less than 4 hours	12,120	4,894	217	861	5,972
4 hours to less than 6 hours	7,224	3,067	158	633	3,858
6 hours to less than 8 hours	8,326	3,613	168	741	4,522
8 hours to less than 10 hours	4,729	2,137	125	506	2,768
10 hours to less than 15 hours	11,001	5,131	299	1,219	6,649
15 hours to less than 20 hours	4,457	2,174	112	617	2,903
20 hours or more	6,000	1,851	190	511	2,552
Total	62,832	26,830	1,369	5,738	33,937

Source: Home Care Statistical Return

Of the 33,937 clients who receive Home Care and a Community Alarm and/or another Telecare service, 31 per cent of clients receive less than 4 hours of Home Care and 64 per cent of clients receive less than 10 hours of Home Care a week.

Chart 11: Percentage of Home Care clients who are receiving Home Care and a Community Alarm and/or another Telecare Service by level of service, 2012



Source: Home Care Statistical Return

Other services

The following tables and charts contain information about Meal Services which Home Care clients can receive in their own home.

Table 8: Home Care clients receiving other services by age group, 2012

Age Group	Home care clients ¹	Number of Clients		% of Home Care Clients	
		Hot Meals	Frozen Meals	Hot Meals	Frozen Meals
Aged Under 65	11,713	186	213	2%	2%
Aged 65+	51,118	3,321	2,740	6%	5%
Total	62,831	3,507	2,953	6%	5%

Source: Home Care Statistical Return

Note 21 clients receive both hot and frozen meals

¹ - Excludes one client with no date of birth provided

Overall, 6,439 Home Care clients also received a Meals Service. 3,507 (6 per cent) of Home Care clients received a Hot Meals Service and 2,953 (5 per cent) received a frozen meals service. 21 clients received both a hot and frozen meal service.

Of the 6,439 Home Care clients who also received a Meals Service, 61 per cent had 'infirmity due to age' and 69 per cent receive 10 hours or less home care. (Refer to table 9 & 10)

Table 9: Home Care clients receiving other services by client group, 2012

Client Group	Total Home care clients	Number of clients		% of home care clients	
		Hot Meals	Frozen Meals	Hot Meals	Frozen Meals
Infirmity due to age	31,416	2,130	1,808	7%	6%
People with Dementia	3,284	212	232	6%	7%
People with Mental Health Problems	2,777	146	89	5%	3%
People with Learning Disabilities	4,588	57	49	1%	1%
People with Physical Disabilities	17,526	784	658	4%	4%
Other	2,086	94	108	5%	5%
Not Known	1,155	84	9	7%	1%
Total	62,832	3,507	2,953	6%	5%

Source: Home Care Statistical Return

Note 21 clients receive both hot and frozen meals

Table 10: Home Care clients receiving other services by level of service, 2012

Client Group	Total Home care clients	Number of clients		% of home care clients	
		Hot Meals	Frozen Meals	Hot Meals	Frozen Meals
Less than 1 hour	2,054	145	76	7%	4%
1 hour to less than 2 hours	6,921	513	236	7%	3%
2 hours to less than 4 hours	12,120	616	438	5%	4%
4 hours to less than 6 hours	7,224	477	343	7%	5%
6 hours to less than 8 hours	8,326	472	452	6%	5%
8 hours to less than 10 hours	4,729	365	309	8%	7%
10 hours to less than 15 hours	11,001	578	738	5%	7%
15 hours to less than 20 hours	4,457	198	219	4%	5%
20 hours or more	6,000	143	142	2%	2%
Totals	62,832	3,507	2,953	6%	5%

Source: Home Care Statistical Return

Note 21 clients receive both hot and frozen meals

3. Additional Services

Meals services

From 2010, information was collected on every person who receives/uses a Meals Services (provided or purchased by the local authority) during census week.

Information was collected separately on the number of clients receiving a Hot Meals Service and the number of clients receiving a Frozen Meals Service during the census week. Eilean Siar and East Renfrewshire do not offer a Meals Service.

Table 11: All clients who are receiving a Meals Services, 2012

Age Group	Total clients receiving a meals a service	Number of clients	
		Hot Meals	Frozen Meals
Unknown	24	7	17
0-64	707	319	388
65-74	1,251	636	615
75-84	3,342	1,827	1,515
85+	4,328	2,496	1,832
Total	9,652	5,285	4,367

Source: Home Care Statistical Return

Note 31 clients receive both hot and frozen meals

As at March 2012, there were 9,652 clients receiving a Meal Service which was provided or purchased by the local authority. 13 per cent of these people were aged between 65 years and 74 years, 35 per cent were aged between 75 years and 84 years, and finally, 45 per cent were aged 85 years and over.

Community Alarm/Telecare services

Information was collected on every person who receives/uses a Community Alarm and/or another Telecare Service (provided or purchased by the local authority) during census week. Further detailed Community Alarm and Telecare tables are available in the annex.

Table 12: All clients who are receiving a Community Alarm/Telecare Service, 2012

Age Band	Number of clients			Total
	Community alarm only	Another telecare service only	Both services	
Aged Under 65	11,295	1,014	3,168	15,477
Aged 65+	77,501	2,747	13,044	93,292
Unknown	1,269	8	42	1,319
Total	90,065	3,769	16,254	110,088

Source: Home Care Statistical Return

As at the census week in March 2012, there were 110,088 people who had a Community Alarm and/or another Telecare Service. 82% of these people had a Community Alarm only.

4. Background information on the collection of the data

Local authorities were asked to provide details of all Home Care Services provided by their own staff, and in addition, services bought in from other local authorities, and private / voluntary organisations. Data were collected with respect to the week including 30th March 2012.

Scottish Borders data is based on a different census week (19th February 2012), this was due to their information management system being upgraded.

A revised Home Care Services statistical data collection was introduced in 2010. The Home Care information is now being collected on an individual record basis as opposed to aggregate tables. ProcXed.net aims to support and promote the electronic exchange of information in Scotland. It reduces administrative burdens and increases the speed, ease and accuracy (via inbuilt validation checks) of information exchange. It additionally encourages best practice and improves access to benchmarking information. Moreover, the system provides a secure method of sharing data. Further information about ProcXed.Net can be provided on request using the contact details provided on the following page.

The Home Care statistical collection asked for information to be returned on every person who receives/uses:

- Home Care Services (provided or purchased by the local authority) during the census week.
- Meals Services (provided or purchased by the local authority) during census week.
- A Community Alarm during census week.
- Other Telecare Services during census week.

In addition, the following information was optionally asked of local authorities:

- Clients who receive Housing Support (provided or purchased by the local authority) during census week.
- Clients who receive Shopping Services (provided or purchased by the local authority) during census week.
- Clients who receive Laundry Services (provided or purchased by the local authority) during census week.

Local Authority responses to optional items

- 21 Local authorities returned data on clients who received Housing Support.
- 21 Local authorities returned data on clients who received Shopping Services.
- 19 Local authorities returned data on clients who received Laundry Services.
- 5 Local authorities returned data on clients who had an IoRN (Indicator of Relative Need) Score.
- 14 Local Authorities returned data on Self-Directed Support.

For each of the optional items, further analysis will be carried out, and a discussion paper written. These will be published as 'data under development' over the coming months.

In 2012, local authorities identified whether the hours of Home Care they provided were 'scheduled' or 'actual' hours during the census week. 20 local authorities provided 'scheduled' hours, 4 local authorities provided 'actual' hours, and 8 local authorities provided both 'scheduled' and 'actual' hours.

Client groupings

Definitions have been kept consistent to maintain trends over time except for client groups. Client groups and definitions were revised in 2010 and (slightly) in 2011. Multiple client groups have been allowed from 2010. Client group analysis over time should therefore be treated with caution. Full definitions can be found in the 'Home care services guidance notes' which can be found at: <http://www.scotland.gov.uk/Topics/Statistics/Browse/Health/HomeCareCensus>.

In this publication, where a local authority returned multiple client groups, in order to avoid double counting clients have been allocated to one client group. This has been based on the following order:

1. Dementia
2. Mental Health Problems
3. Learning Disability
4. Physical Disability
5. Infirmary due to age (for people who do not fall into categories 1-4)
6. Other vulnerable groups (including Addiction, Palliative Care and Carer's)
7. Not known

For example, if a client has dementia and has a physical disability, then in table 2 they will appear in the dementia client group for the purpose of analysis.

Community Alarm and other Telecare

Telecare is the remote or enhanced delivery of care services to people in their own home by means of telecommunications and computerised services. Telecare usually refers to sensors or alerts which provide continuous, automatic and remote monitoring of care needs emergencies and lifestyle changes, using information and communication technology (ICT) to trigger human responses, or shut down equipment to prevent hazards (Source: National Telecare Development Programme, Scottish Government). Community Alarms are considered to be the basic, introductory level of telecare.

Community Alarm is defined as: A person in receipt of a technology package which consists of a communication hub (either individual home hub unit or part of a communal system e.g. the alarm system within sheltered housing), plus a button/pull chords/pendant which transfers an alert/alarm/data to a monitoring centre or individual responder.

Telecare is defined as; A person in receipt of a technology package which goes over and above the basic community alarm package identified above, and includes any other sensors or monitoring equipment e.g. (not an exhaustive list);

- linked pill dispensers,
- linked smoke detectors,
- linked key safes,
- bogus caller buttons and door entry systems,
- property exit sensors, extreme temperature, flood, falls, movement detectors.

Stand alone devices and pieces of equipment are not be considered 'telecare' for the purpose of this return i.e. they should be capable of alerting/providing information to a monitoring centre or individual responder and should generally be 'linked' to the home hub or communal alarm system.

Data completeness

A return was received from each local authority in Scotland.

More detailed tables on Home Care services are available from our website at:

www.scotland.gov.uk/Topics/Statistics/Browse/Health/Data/HomeCare.

Other data sources

In order to calculate rates per population, the National Records of Scotland (NRS) mid year population estimates have been used. For 2012 rates, the 2011 mid year population estimates have been used (the latest available).

<http://www.gro-scotland.gov.uk/statistics/theme/population/index.html>

Cost of respondent burden

To calculate the cost of respondent burden to this survey each Local Authority was asked to provide an estimate of the time taken in hours to extract the requested information and complete the survey form. The average time from 14 Local Authorities has then been used within the calculation below to calculate that the total cost of responding to this survey is £24,842.

$$\begin{array}{r} \text{Cost of} \\ \text{responding} \\ \text{(\pounds)} \end{array} = \begin{array}{r} \text{(number of responses)} \\ \times \\ \text{median time it takes to respond in hours} \\ \times \\ \text{hourly rate of typical respondent)} \end{array} + \begin{array}{r} \text{any additional} \\ \text{costs experienced} \\ \text{by data providers} \end{array}$$

Further information

Further details and analysis of the data presented in this Statistics Release are available on request from the address given below. The Statistics Release is available on the Internet by accessing the Scottish Government web site: –

<http://www.scotland.gov.uk/Topics/Statistics/Browse/Health/Publications>

Information at local authority level is shown in the annex to this Statistics Release.

Contact details

Community Care Statistics
Basement Rear
St Andrews House
Edinburgh
EH1 3DG

Contact: Steven Gillespie
Tel: 0131 244 3777
E-mail: SWStat@scotland.gov.uk

This statistics release was published on 27th November 2012.

5. Annex

The Annex provides further detailed analysis.

Table 1: Total Number of Home Care Clients and Hours of Service Provided by Local Authority, 2007-2012

Table 2: Number of Home Care Clients and Hours Provided/Purchased and rates per population, 2000-2012

Table 3: Home Care Clients by Level of Service, 2000-2012

Table 4: Distribution of Clients by Level of Service, 2000-2012

Table 5: Home Care Clients and hours by Provider of Service, 2000-2012

Table 6 & Chart 12- Distribution of home care hours : Scotland - 2011 and 2012

Table 7: Age breakdown of Home Care Clients by Local Authority, 2012

Table 8: Breakdown of Home Care Clients in receipt of a Community Alarm or other Telecare Service by Local Authority, 2012

Table 9: Breakdown of Home Care Clients in receipt of a Personal Care Service (for those aged 65+) by Local Authority, 2012

Table 10: Breakdown of Home Care Clients in receipt of a Meals Service by Local Authority, 2012

Table 11: All Community Alarm and Telecare clients by age group and Local Authority, 2012

Table 12: All Community Alarm and Telecare Clients aged 65+, 75+, 85+ and Local Authority, 2012

Table 13: Clients who are receiving a Meals Service by age group and Local Authority, 2012

Totals may not add up to the sum of components due to rounding.

Time series data from 1998 to latest is available from our website at:

<http://www.scotland.gov.uk/Topics/Statistics/Browse/Health/Data/HomeCare#top>

Annex, Table 1 - Total Number of Home Care Clients and Hours of Service Provided by Local Authority, 2007-2012

Local Authority	Number of clients receiving a service						Total hours of service provided or purchased by LA					
	2007	2008	2009	2010	2011	2012	2007	2008	2009	2010	2011	2012
Aberdeen City	2,945	2,449	2,013	1,901	1,931	1,995	22,831	17,414	15,176	15,598	16,230	16,499
Aberdeenshire	2,366	2,525	2,634	2,396	2,153	2,121	22,619	22,331	21,452	19,530	14,759	15,340
Angus	2,024	1,886	1,831	1,778	1,659	1,554	7,288	6,264	6,462	6,556	6,295	6,597
Argyll & Bute	816	838	748	817	829	898	8,216	8,577	7,843	8,224	8,624	9,674
Clackmannanshire	796	829	786	743	709	684	8,196	8,040	6,877	6,694	6,498	6,668
Dumfries & Galloway	2,309	2,070	1,900	2,409	2,338	2,479	26,237	21,167	20,674	34,998	31,189	43,781
Dundee City	2,061	2,173	2,216	2,205	2,149	1,882	13,037	14,026	15,306	15,234	14,976	14,885
East Ayrshire	1,941	2,111	2,059	1,918	1,834	2,065	25,246	26,381	26,241	24,514	18,898	26,673
East Dunbartonshire	1,359	1,420	1,482	1,490	1,402	1,240	13,590	13,272	16,376	16,566	16,919	16,731
East Lothian	1,513	1,499	1,557	1,560	1,589	1,606	17,658	18,945	16,607	19,451	19,847	22,166
East Renfrewshire	991	932	943	955	986	1,022	6,357	6,341	6,866	8,077	8,348	8,627
Edinburgh, City of	4,944	4,664	4,571	4,596	4,379	4,233	41,440	41,307	38,512	44,067	44,731	44,236
Eilean Siar	660	590	586	571	531	544	5,460	5,134	5,262	5,794	5,120	5,122
Falkirk	2,334	2,325	2,445	2,594	2,368	2,385	22,037	22,287	23,311	24,293	23,399	22,505
Fife	7,265	6,489	6,002	4,834	4,439	4,289	68,913	76,025	72,859	64,939	93,610	89,067
Glasgow City	8,586	8,264	8,284	7,899	7,253	6,981	83,724	81,971	80,050	77,805	71,170	70,656
Highland	2,252	2,105	2,073	2,038	2,051	1,981	15,134	12,426	12,182	12,872	14,902	14,869
Inverclyde	1,343	1,383	1,422	1,396	1,276	1,252	14,253	14,865	14,860	14,913	11,465	11,163
Midlothian	1,147	1,128	1,086	981	993	1,035	11,031	12,829	12,302	10,719	10,981	10,682
Moray	1,320	1,305	1,312	1,179	1,197	1,211	8,671	8,378	12,456	10,558	10,339	10,522
North Ayrshire	1,402	1,564	1,654	1,420	1,427	1,850	10,327	12,320	12,991	11,025	11,251	25,546
North Lanarkshire	4,247	4,014	3,944	3,690	3,430	3,308	35,053	33,813	34,833	34,911	29,974	27,409
Orkney Islands	414	284	275	286	260	241	2,248	2,194	1,886	1,819	1,582	1,536
Perth & Kinross	1,194	1,201	1,216	1,527	1,521	1,357	8,593	8,903	9,015	11,607	11,907	10,717
Renfrewshire	2,305	2,318	2,457	2,222	1,818	1,832	16,918	14,654	14,276	12,673	27,770	28,452
Scottish Borders	1,389	1,337	1,444	1,391	1,375	1,417	9,326	9,141	10,172	10,876	9,900	10,710
Shetland Islands	491	453	478	472	500	470	2,854	2,870	3,075	3,275	3,771	3,089
South Ayrshire	1,908	2,045	2,173	2,216	2,437	2,273	32,753	35,859	36,791	37,167	39,957	37,689
South Lanarkshire	3,845	3,835	4,131	4,084	3,965	3,936	51,368	54,177	52,088	57,553	55,903	54,399
Stirling	977	1,145	1,090	1,211	1,244	1,216	10,875	14,562	13,878	16,681	17,099	18,547
West Dunbartonshire	2,065	2,019	1,890	1,769	1,667	1,646	13,575	13,562	12,915	12,800	12,143	12,774
West Lothian	1,501	1,559	1,629	1,676	1,750	1,829	9,214	10,980	12,134	14,646	14,306	15,563
SCOTLAND	70,710	68,759	68,331	66,224	63,460	62,832	645,041	651,014	645,727	666,434	683,862	712,894

Source: Home Care Statistical Return

Annex, Table 2 - Number of Home Care Clients and Hours Provided/Purchased and rates per population, 2000-2012

	Year at 31 march												
	2000	2001	2002	2003	2004	2005	2006	2007	2008	2009	2010	2011	2012
No. of Clients (All ages)	70,210	65,533	64,546	67,266	69,986	71,094	70,657	70,710	68,759	68,331	66,224	63,460	62,832
Client Hours	393,071	394,567	452,758	501,030	543,383	584,160	604,081	645,041	651,014	645,727	666,434	683,862	712,894
Hours per Client	5.6	6.0	7.0	7.4	7.8	8.2	8.5	9.1	9.5	9.4	10.1	10.8	11.3
Clients aged under 65	10,993	10,152	10,910	11,520	12,224	13,211	13,470	14,009	13,421	13,613	12,550	11,722	11,713
Clients aged over 65	59,217	55,381	53,636	55,746	57,762	57,883	57,187	56,701	55,338	54,718	53,661	51,731	51,118
Population (All ages)	5,062,940	5,064,200	5,054,800	5,057,400	5,078,400	5,094,800	5,116,900	5,144,200	5,168,500	5,194,000	5,222,100	5,254,800	5,254,800
Population (Under 65)	4,263,455	4,257,019	4,241,921	4,238,337	4,251,846	4,261,706	4,278,932	4,298,587	4,311,957	4,325,488	4,342,608	4,362,413	4,362,413
Population (Over 65)	799,485	807,181	812,879	819,063	826,554	833,094	837,968	845,613	856,543	868,512	879,492	892,387	892,387
Rate per 1,000 population (All ages)	13.9	12.9	12.8	13.3	13.8	14.0	13.8	13.7	13.3	13.2	12.7	12.1	12.0
Rate per 1,000 population (Under 65)	2.6	2.4	2.6	2.7	2.9	3.1	3.1	3.3	3.1	3.1	2.9	2.7	2.7
Rate per 1,000 population (Over 65)	74.1	68.6	66.0	68.1	69.9	69.5	68.2	67.1	64.6	63.0	61.0	58.0	57.3

Source: Home Care Statistical Return

*Note: 2011 Mid Year Population Estimates used as 2012 Mid Year Population Estimates are not yet available

Annex, Table 3 - Home Care Clients by Level of Service, 2000-2012

Level of Service	Last week in March												
	2000	2001	2002	2003	2004	2005	2006	2007	2008	2009	2010	2011	2012
Less than 1 Hour	2,908	3,070	2,267	2,293	2,881	2,294	2,923	2,669	2,804	2,952	2,770	2,171	2,054
1 Hour to Less than 2 Hours	14,240	11,867	11,816	12,526	11,811	12,010	11,930	11,211	10,262	9,307	8,895	7,535	6,921
2 Hours to Less than 4 Hours	20,836	18,837	17,634	17,442	17,672	17,526	16,918	16,135	14,634	14,687	13,548	12,866	12,120
4 Hours to Less than 6 Hours	11,404	10,017	9,286	9,074	9,195	9,140	8,690	8,572	8,425	8,057	7,538	7,121	7,224
6 Hours to Less than 8 Hours	6,214	6,338	6,214	6,661	7,079	7,384	7,320	7,840	7,568	7,933	7,933	8,341	8,326
8 Hours to Less than 10 Hours	4,008	3,626	3,774	4,081	4,439	4,665	4,602	4,784	4,676	5,184	4,700	4,669	4,729
10 Hours to Less than 15 Hours	6,082	6,798	7,393	7,786	8,377	8,958	9,035	9,522	10,236	10,045	10,451	10,596	11,001
15 Hours to Less than 20 Hours	2,576	2,781	3,177	3,565	4,015	4,189	4,098	4,393	4,324	4,637	4,498	4,287	4,457
20 Hours or More	1,942	2,199	2,985	3,838	4,517	4,928	5,141	5,584	5,830	5,529	5,891	5,874	6,000
Totals	70,210	65,533	64,546	67,266	69,986	71,094	70,657	70,710	68,759	68,331	66,224	63,460	62,832

Source: Home Care Statistical Return

Annex, Table 4 - Distribution of Clients by Level of Service, 2000-2012

Level of Service	Last week in March												
	2000	2001	2002	2003	2004	2005	2006	2007	2008	2009	2010	2011	2012
More than 10 hours	15%	18%	21%	23%	24%	25%	26%	28%	30%	30%	31%	33%	34%
Between 4 and 10 hours	31%	30%	30%	29%	30%	30%	29%	30%	30%	31%	30%	32%	32%
Less than 4 hours	54%	52%	49%	48%	46%	45%	45%	42%	40%	39%	38%	36%	34%
Total	100%	100%	100%	100%	100%	100%	100%	100%	100%	100%	100%	100%	100%

Source: Home Care Statistical Return

Annex, Table 5 - Home Care Clients and hours by Provider of Service, 2000-2012

	Last week in March												
	2000	2001	2002	2003	2004	2005	2006	2007	2008	2009	2010	2011	2012
Number of Clients:													
Receiving Service Solely from Local Authority	63,271	57,219	55,513	56,342	56,662	54,935	53,478	51,577	48,844	46,344	43,648	38,854	35,588
Receiving Service Solely from Private / Voluntary Sector	4,590	5,578	6,178	7,550	9,430	11,680	12,233	13,926	14,794	16,733	17,633	19,721	22,624
Receiving Service from a Combination of LA and Private / Voluntary Sector	2,349	2,736	2,855	3,374	3,894	4,479	4,946	5,207	5,121	5,254	4,943	4,885	4,620
Distribution of Clients:													
Receiving Service Solely from Local Authority	90%	87%	86%	84%	81%	77%	76%	73%	71%	68%	66%	61%	57%
Receiving Service Solely from Private / Voluntary Sector	7%	9%	10%	11%	13%	16%	17%	20%	22%	24%	27%	31%	36%
Receiving Service from a Combination of LA and Private / Voluntary Sector	3%	4%	4%	5%	6%	6%	7%	7%	7%	8%	7%	8%	7%
Number of Hours:													
Receiving Service Solely from Local Authority	321,771	306,691	332,996	344,315	354,613	350,682	340,294	343,506	339,046	326,541	313,474	301,059	299,874
Receiving Service Solely from Private / Voluntary Sector	39,708	55,098	83,372	110,999	130,625	173,330	196,297	224,853	237,206	246,187	278,920	314,242	348,657
Receiving Service from a Combination of LA and Private / Voluntary Sector	31,592	32,778	36,390	45,716	58,144	60,147	67,490	76,683	74,761	72,999	74,040	68,561	64,362
Distribution of Hours:													
Receiving Service Solely from Local Authority	82%	78%	74%	69%	65%	60%	56%	53%	52%	51%	47%	44%	42%
Receiving Service Solely from Private / Voluntary Sector	10%	14%	18%	22%	24%	30%	32%	35%	36%	38%	42%	46%	49%
Receiving Service from a Combination of LA and Private / Voluntary Sector	8%	8%	8%	9%	11%	10%	11%	12%	11%	11%	11%	10%	9%

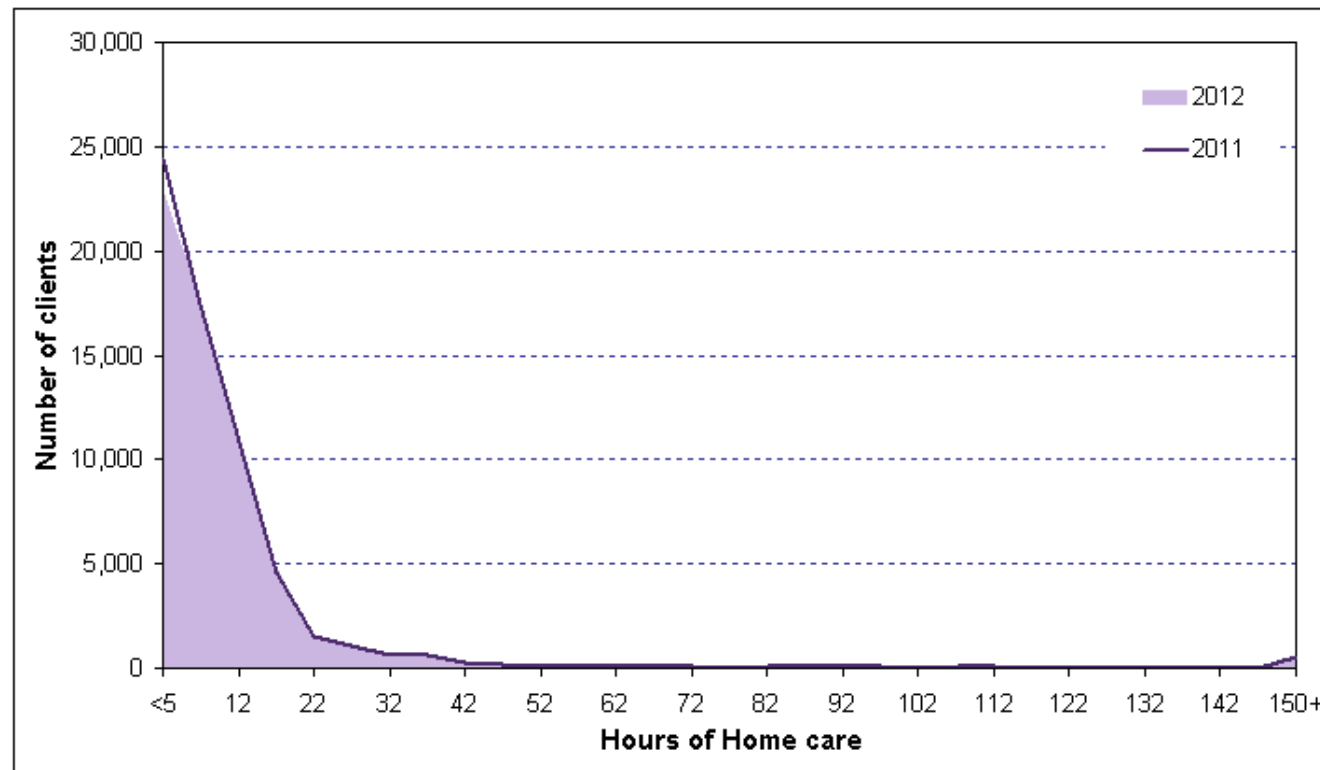
Source: Home Care Statistical Return

Annex, Table 6 & Chart 12- Distribution of home care hours : Scotland - 2011 and 2012

Hours	2011	2012
<5	24,475	22,928
5 to <10	17,492	17,776
10 to <15	10,867	11,151
15 to <20	4,598	4,853
20 to <25	1,544	1,490
25 to <30	1,113	1,040
30 to <35	659	664
35 to <40	619	581
40 to <45	295	300
45 to <50	191	191
50 to <55	125	144
55 to <60	115	137
60 to <65	93	98
65 to <70	91	103
70 to <75	84	102
75 to <80	40	68
80 to <85	53	60
85 to <90	55	68
90 to <95	51	58
95 to <100	51	86
100 to <105	36	30
105 to <110	86	108
110 to <115	47	75
115 to <120	35	30
120 to <125	23	10
125 to <130	14	18
130 to <135	29	17
135 to <140	22	23
140 to <145	28	29
145 to <150	30	20
150+	499	574
Total	63,460	62,832

Source: Home Care Statistical Return

Chart 12 - Distribution of home care hours : Scotland - 2011 and 2012



Home care clients have been grouped into hour bands of five hours and the distribution has been plotted in Chart 12

More detailed tables on Home Care services are available from our website at:

www.scotland.gov.uk/Topics/Statistics/Browse/Health/Data/HomeCare

Annex, Table 7 - Age breakdown of Home Care Clients by Local Authority, 2012

Local Authority	Age group of home care client						Rate per 1,000 population				
	Unknown	0-64	65-74	75-84	85+	Total	0-64	65-74	75-84	85+	Total
Aberdeen City	0	211	253	735	796	1,995	1.1	15.5	62.6	188.1	9.1
Aberdeenshire	0	293	244	695	889	2,121	1.4	10.7	52.5	172.9	8.6
Angus	0	228	228	513	585	1,554	2.6	18.9	66.0	203.1	14.0
Argyll & Bute	0	62	113	309	414	898	0.9	10.4	47.6	174.2	10.0
Clackmannanshire	0	138	105	207	234	684	3.3	21.5	80.2	277.3	13.5
Dumfries & Galloway	0	486	327	812	854	2,479	4.2	17.9	71.8	218.1	16.7
Dundee City	0	268	308	615	691	1,882	2.2	24.1	67.5	185.9	12.9
East Ayrshire	0	433	302	718	612	2,065	4.4	25.4	101.6	250.5	17.2
East Dunbartonshire	0	277	132	409	422	1,240	3.3	12.3	57.8	176.7	11.9
East Lothian	0	431	174	479	522	1,606	5.4	18.2	78.9	233.0	16.4
East Renfrewshire	0	121	136	344	421	1,022	1.6	16.3	59.1	200.3	11.4
Edinburgh, City of	0	721	554	1,348	1,610	4,233	1.7	16.2	53.8	150.4	8.5
Eilean Siar	1	73	52	187	231	544	3.6	17.2	97.1	296.2	20.9
Falkirk	0	607	358	716	704	2,385	4.7	25.2	85.2	244.0	15.4
Fife	0	1,186	620	1,174	1,309	4,289	3.9	17.3	54.8	156.6	11.7
Glasgow City	0	799	1,227	2,673	2,282	6,981	1.5	30.1	91.2	220.9	11.7
Highland	0	301	273	663	744	1,981	1.7	11.6	47.6	143.4	8.9
Inverclyde	0	156	201	466	429	1,252	2.4	25.7	92.9	245.3	15.8
Midlothian	0	226	138	304	367	1,035	3.3	17.6	66.2	234.4	12.6
Moray	0	161	182	444	424	1,211	2.3	19.9	77.2	215.1	13.9
North Ayrshire	0	415	300	589	546	1,850	3.8	20.8	69.8	188.3	13.7
North Lanarkshire	0	509	579	1,166	1,054	3,308	1.8	20.3	70.4	203.6	10.1
Orkney Islands	0	24	38	70	109	241	1.5	16.2	55.6	241.7	12.0
Perth & Kinross	0	130	172	449	606	1,357	1.1	10.9	44.3	152.2	9.1
Renfrewshire	0	536	278	517	501	1,832	3.8	17.6	53.1	150.0	10.7
Scottish Borders	0	162	156	497	602	1,417	1.8	12.1	64.4	227.9	12.5
Shetland Islands	0	51	79	172	168	470	2.7	36.3	144.5	343.6	20.9
South Ayrshire	0	643	286	651	693	2,273	7.4	22.3	80.3	212.3	20.4
South Lanarkshire	0	884	541	1,305	1,206	3,936	3.4	18.8	72.0	194.7	12.6
Stirling	0	421	171	283	341	1,216	5.6	19.8	54.3	178.1	13.4
West Dunbartonshire	0	282	321	565	478	1,646	3.7	39.3	109.1	275.8	18.2
West Lothian	0	478	322	566	463	1,829	3.2	22.3	75.6	199.0	10.6
SCOTLAND	1	11,713	9,170	20,641	21,307	62,832	2.7	19.1	68.2	193.3	12.0

Source: Home Care Statistical Return

Annex, Table 8 - Breakdown of Home Care Clients in receipt of a Community Alarm or other Telecare Service by Local Authority, 2012

Local Authority	Home care clients ¹	Age group of client					Rate per Home care client				
		0-64	65-74	75-84	85+	Total	0-64	65-74	75-84	85+	Total
Aberdeen City	1,995	50	60	237	293	640	0.24	0.24	0.32	0.37	0.32
Aberdeenshire	2,121	71	85	277	466	899	0.24	0.35	0.40	0.52	0.42
Angus	1,554	113	157	396	493	1,159	0.50	0.69	0.77	0.84	0.75
Argyll & Bute	898	26	48	170	252	496	0.42	0.42	0.55	0.61	0.55
Clackmannanshire	684	44	79	174	203	500	0.32	0.75	0.84	0.87	0.73
Dumfries & Galloway	2,479	95	127	422	520	1,164	0.20	0.39	0.52	0.61	0.47
Dundee City	1,882	109	186	423	473	1,191	0.41	0.60	0.69	0.68	0.63
East Ayrshire	2,065	155	195	467	448	1,265	0.36	0.65	0.65	0.73	0.61
East Dunbartonshire	1,240	65	62	245	288	660	0.23	0.47	0.60	0.68	0.53
East Lothian	1,606	13	21	41	52	127	0.03	0.12	0.09	0.10	0.08
East Renfrewshire	1,022	40	72	183	234	529	0.33	0.53	0.53	0.56	0.52
Edinburgh, City of	4,233	232	265	670	955	2,122	0.32	0.48	0.50	0.59	0.50
Eilean Siar	543	23	23	101	107	254	0.32	0.44	0.54	0.46	0.47
Falkirk	2,385	142	196	474	555	1,367	0.23	0.55	0.66	0.79	0.57
Fife	4,289	311	293	705	867	2,176	0.26	0.47	0.60	0.66	0.51
Glasgow City	6,981	193	454	1,282	1,252	3,181	0.24	0.37	0.48	0.55	0.46
Highland	1,981	98	118	302	468	986	0.33	0.43	0.46	0.63	0.50
Inverclyde	1,252	66	103	301	304	774	0.42	0.51	0.65	0.71	0.62
Midlothian	1,035	77	75	206	276	634	0.34	0.54	0.68	0.75	0.61
Moray	1,211	55	71	222	241	589	0.34	0.39	0.50	0.57	0.49
North Ayrshire	1,850	114	160	380	387	1,041	0.27	0.53	0.65	0.71	0.56
North Lanarkshire	3,308	285	410	916	859	2,470	0.56	0.71	0.79	0.81	0.75
Orkney Islands	241	16	27	58	92	193	0.67	0.71	0.83	0.84	0.80
Perth & Kinross	1,357	61	94	272	380	807	0.47	0.55	0.61	0.63	0.59
Renfrewshire	1,832	102	118	246	322	788	0.19	0.42	0.48	0.64	0.43
Scottish Borders	1,417	73	82	303	415	873	0.45	0.53	0.61	0.69	0.62
Shetland Islands	470	22	48	134	144	348	0.43	0.61	0.78	0.86	0.74
South Ayrshire	2,273	135	142	390	466	1,133	0.21	0.50	0.60	0.67	0.50
South Lanarkshire	3,936	382	346	940	920	2,588	0.43	0.64	0.72	0.76	0.66
Stirling	1,216	79	90	206	242	617	0.19	0.53	0.73	0.71	0.51
West Dunbartonshire	1,646	89	215	411	380	1,095	0.32	0.67	0.73	0.79	0.67
West Lothian	1,829	255	225	427	364	1,271	0.53	0.70	0.75	0.79	0.69
SCOTLAND	62,831	3,591	4,647	11,981	13,718	33,937	0.31	0.51	0.58	0.64	0.54

Source: Home Care Statistical Return

¹ - Excludes one client with no date of birth provided

Annex, Table 9 - Breakdown of Home Care Clients in receipt of a Personal Care Service (for those aged 65+) by Local Authority, 2012

Local Authority	Age group of client				Rate per Home care client			
	65-74	75-84	85+	Total	65-74	75-84	85+	Total
Aberdeen City	252	735	795	1,782	1.00	1.00	1.00	1.00
Aberdeenshire	154	540	697	1,391	0.63	0.78	0.78	0.76
Angus	126	303	372	801	0.55	0.59	0.64	0.60
Argyll & Bute	111	308	409	828	0.98	1.00	0.99	0.99
Clackmannanshire	93	203	232	528	0.89	0.98	0.99	0.97
Dumfries & Galloway	319	809	850	1,978	0.98	1.00	1.00	0.99
Dundee City	184	379	439	1,002	0.60	0.62	0.64	0.62
East Ayrshire	292	711	606	1,609	0.97	0.99	0.99	0.99
East Dunbartonshire	132	406	416	954	1.00	0.99	0.99	0.99
East Lothian	139	407	462	1,008	0.80	0.85	0.89	0.86
East Renfrewshire	131	326	397	854	0.96	0.95	0.94	0.95
Edinburgh, City of	516	1,310	1,553	3,379	0.93	0.97	0.96	0.96
Eilean Siar	48	182	223	453	0.92	0.97	0.97	0.96
Falkirk	307	652	649	1,608	0.86	0.91	0.92	0.90
Fife	545	1,049	1,218	2,812	0.88	0.89	0.93	0.91
Glasgow City	1,142	2,566	2,203	5,911	0.93	0.96	0.97	0.96
Highland	251	633	707	1,591	0.92	0.95	0.95	0.95
Inverclyde	187	454	415	1,056	0.93	0.97	0.97	0.96
Midlothian	117	283	342	742	0.85	0.93	0.93	0.92
Moray	154	384	378	916	0.85	0.86	0.89	0.87
North Ayrshire	261	564	535	1,360	0.87	0.96	0.98	0.95
North Lanarkshire	530	1,091	1,005	2,626	0.92	0.94	0.95	0.94
Orkney Islands	36	66	109	211	0.95	0.94	1.00	0.97
Perth & Kinross	162	409	560	1,131	0.94	0.91	0.92	0.92
Renfrewshire	259	505	496	1,260	0.93	0.98	0.99	0.97
Scottish Borders	151	492	597	1,240	0.97	0.99	0.99	0.99
Shetland Islands	35	92	107	234	0.44	0.53	0.64	0.56
South Ayrshire	259	648	692	1,599	0.91	1.00	1.00	0.98
South Lanarkshire	471	1,222	1,128	2,821	0.87	0.94	0.94	0.92
Stirling	128	254	309	691	0.75	0.90	0.91	0.87
West Dunbartonshire	247	455	407	1,109	0.77	0.81	0.85	0.81
West Lothian	295	527	431	1,253	0.92	0.93	0.93	0.93
SCOTLAND	8,034	18,965	19,739	46,738	0.88	0.92	0.93	0.91

Source: Home Care Statistical Return

Note figures from those aged over 65 only.

Annex, Table 10 - Breakdown of Home Care Clients in receipt of a Meals Service by Local Authority, 2012

Local Authority	Age group of client					Rate per Home care client				
	0-64	65-74	75-84	85+	Total	0-64	65-74	75-84	85+	Total
Aberdeen City	28	45	159	215	447	0.13	0.18	0.22	0.27	0.22
Aberdeenshire	5	21	58	125	209	0.02	0.09	0.08	0.14	0.10
Angus	19	38	117	205	379	0.08	0.17	0.23	0.35	0.24
Argyll & Bute	*	*	13	32	50	*	*	0.04	0.08	0.06
Clackmannanshire	5	12	21	47	85	0.04	0.11	0.10	0.20	0.12
Dumfries & Galloway	*	*	79	116	223	*	*	0.10	0.14	0.09
Dundee City	25	57	129	179	390	0.09	0.19	0.21	0.26	0.21
East Ayrshire	27	32	94	103	256	0.06	0.11	0.13	0.17	0.12
East Dunbartonshire	*	*	15	19	44	*	*	0.04	0.05	0.04
East Lothian	18	23	97	152	290	0.04	0.13	0.20	0.29	0.18
East Renfrewshire	0	0	0	0	0	0.00	0.00	0.00	0.00	0.00
Edinburgh, City of	*	*	9	26	45	*	*	0.01	0.02	0.01
Eilean Siar	0	0	0	0	0	0.00	0.00	0.00	0.00	0.00
Falkirk	8	23	69	86	186	0.01	0.06	0.10	0.12	0.08
Fife	20	56	184	293	553	0.02	0.09	0.16	0.22	0.13
Glasgow City	22	59	104	129	314	0.03	0.05	0.04	0.06	0.04
Highlands	13	38	88	109	248	0.04	0.14	0.13	0.15	0.13
Inverclyde	*	*	58	61	152	*	*	0.12	0.14	0.12
Midlothian	7	9	18	36	70	0.03	0.07	0.06	0.10	0.07
Moray	5	9	68	74	156	0.03	0.05	0.15	0.17	0.13
North Ayrshire	*	*	46	46	114	*	*	0.08	0.08	0.06
North Lanarkshire	5	9	21	22	57	0.01	0.02	0.02	0.02	0.02
Orkney Islands	7	8	15	33	63	0.29	0.21	0.21	0.30	0.26
Perth & Kinross	8	17	68	87	180	0.06	0.10	0.15	0.14	0.13
Renfrewshire	24	44	121	166	355	0.04	0.16	0.23	0.33	0.19
Scottish Borders	16	12	71	108	207	0.10	0.08	0.14	0.18	0.15
Shetland Islands	6	23	56	67	152	0	0	0.33	0.40	0.32
South Ayrshire	9	25	131	176	341	0.01	0.09	0.20	0.25	0.15
South Lanarkshire	45	58	151	170	424	0.05	0.11	0.12	0.14	0.11
Stirling	*	*	26	44	82	*	*	0.09	0.13	0.07
West Dunbartonshire	21	37	74	77	209	0.07	0.12	0.13	0.16	0.13
West Lothian	30	22	55	51	158	0.06	0.07	0.10	0.11	0.09
SCOTLAND	399	771	2,215	3,054	6,439	0.03	0.08	0.11	0.14	0.10

Source: Home Care Statistical Return

Note: 21 clients receive both hot and frozen meals.

Note: Cells with less than 5 have been suppressed to maintain confidentiality. These are indicated with a '*'

Annex, Table 11 - All Community Alarm and Telecare clients by age group and Local Authority, 2012

Local Authority	Age group of client						Rate per 1,000 population				
	Unknown	0-64	65-74	75-84	85+	Total	0-64	65-74	75-84	85+	Total
Aberdeen City		216	185	740	741	1,882	1.15	11.30	62.99	175.09	8.54
Aberdeenshire		269	281	861	1,056	2,467	1.30	12.37	65.05	205.33	9.96
Angus		386	543	1,346	1,229	3,504	4.39	44.91	173.27	426.74	31.67
Argyll & Bute	1	123	166	562	654	1,506	1.76	15.34	86.53	275.25	16.81
Clackmannanshire		218	265	520	430	1,433	5.13	54.21	201.39	509.48	28.23
Dumfries & Galloway		233	263	910	986	2,392	2.03	14.44	80.42	251.85	16.16
Dundee City		629	1,068	1,876	1,390	4,963	5.24	83.70	205.84	373.86	34.09
East Ayrshire		358	459	1,087	937	2,841	3.62	38.54	153.79	383.54	23.64
East Dunbartonshire		186	243	766	813	2,008	2.21	22.59	108.18	340.45	19.20
East Lothian		13	28	46	57	144	0.16	2.93	7.58	25.45	1.47
East Renfrewshire		174	202	631	689	1,696	2.36	24.17	108.49	327.78	18.88
Edinburgh, City of	101	1,282	1,189	2,151	2,362	7,085	3.01	34.80	85.86	220.64	14.30
Eilean Siar	25	72	74	252	224	647	3.54	24.45	130.91	287.18	24.81
Falkirk		526	736	1,449	1,186	3,897	4.08	51.76	172.34	411.09	25.24
Fife		783	777	2,139	2,259	5,958	2.59	21.70	99.78	270.18	16.22
Glasgow City	0	2,497	2,668	5,505	4,203	14,873	4.82	65.48	187.85	406.87	24.84
Highlands ¹	1,152	356	344	964	1,178	3,994	#	#	#	#	17.96
Inverclyde		306	315	754	671	2,046	4.73	40.29	150.26	383.65	25.83
Midlothian	12	306	272	625	619	1,834	4.47	34.74	136.17	395.27	22.27
Moray	6	174	179	499	535	1,393	2.47	19.59	86.74	271.44	15.96
North Ayrshire		272	478	1,107	1,041	2,898	2.49	33.15	131.15	358.97	21.45
North Lanarkshire		1,980	2,174	4,474	2,711	11,339	7.16	76.28	270.15	523.56	34.71
Orkney Islands		59	90	191	207	547	3.66	38.40	151.83	458.98	27.13
Perth & Kinross	1	269	287	857	1,124	2,538	2.25	18.23	84.58	282.34	16.97
Renfrewshire		248	361	950	946	2,505	1.75	22.92	97.49	283.15	14.68
Scottish Borders	1	492	500	1,280	1,512	3,785	5.47	38.71	165.82	572.29	33.45
Shetland Islands	4	83	107	275	262	731	4.45	49.17	231.09	535.79	32.49
South Ayrshire		221	236	701	751	1,909	2.53	18.43	86.51	230.02	17.11
South Lanarkshire		1,210	1,652	3,356	2,350	8,568	4.66	57.39	185.18	379.46	27.40
Stirling	15	215	253	669	670	1,822	2.87	29.33	128.41	349.87	20.07
West Dunbartonshire		258	419	830	662	2,169	3.43	51.24	160.26	382.00	24.00
West Lothian	1	1,063	1,076	1,678	896	4,714	7.15	74.63	224.27	385.05	27.25
SCOTLAND	1,319	15,477	17,890	40,051	35,351	110,088	3.55	37.32	132.25	320.70	20.95

Source: Home Care Statistical Return

Note ¹: As a result of missing age information for Highland, this affects the rates per 1,000 population by age group, which have been replaced by '#'

Annex, Table 12 - All Community Alarm and Telecare Clients aged 65+, 75+, 85+ and Local Authority, 2012

Local Authority	65+		75+		85+	
	Number of Community Alarm and Telecare clients	Rate per 1,000 popl aged 65+	Number of Community Alarm and Telecare clients	Rate per 1,000 popl aged 75+	Number of Community Alarm and Telecare clients	Rate per 1,000 popl aged 85+
Aberdeen City	1,666	51.49	1,481	92.68	741	175.09
Aberdeenshire	2,198	53.49	1,917	104.30	1,056	205.33
Angus	3,118	137.12	2,575	241.83	1,229	426.74
Argyll & Bute	1,382	70.19	1,216	137.08	654	275.25
Clackmannanshire	1,215	146.14	950	277.29	430	509.48
Dumfries & Galloway	2,159	64.54	1,896	124.48	986	251.85
Dundee City	4,334	169.35	3,266	254.52	1,390	373.86
East Ayrshire	2,483	115.92	2,024	212.81	937	383.54
East Dunbartonshire	1,822	90.09	1,579	166.75	813	340.45
East Lothian	131	7.33	103	12.39	57	25.45
East Renfrewshire	1,522	93.51	1,320	166.71	689	327.78
Edinburgh, City of	5,702	81.55	4,513	126.21	2,362	220.64
Eilean Siar	550	95.97	476	175.97	224	287.18
Falkirk	3,371	132.13	2,635	233.33	1,186	411.09
Fife	5,175	78.89	4,398	147.59	2,259	270.18
Glasgow City	12,376	153.97	9,708	244.94	4,203	406.87
Highland ¹	2,486	58.42	2,142	112.11	1,178	227.11
Inverclyde	1,740	119.29	1,425	210.58	671	383.65
Midlothian	1,516	108.40	1,244	202.08	619	395.27
Moray	1,213	71.95	1,034	133.87	535	271.44
North Ayrshire	2,626	101.94	2,148	189.40	1,041	358.97
North Lanarkshire	9,359	186.29	7,185	330.51	2,711	523.56
Orkney Islands	488	120.40	398	232.88	207	458.98
Perth & Kinross	2,268	75.96	1,981	140.37	1,124	282.34
Renfrewshire	2,257	78.26	1,896	144.89	946	283.15
Scottish Borders	3,292	141.43	2,792	269.47	1,512	572.29
Shetland Islands	644	167.06	537	319.83	262	535.79
South Ayrshire	1,688	69.83	1,452	127.73	751	230.02
South Lanarkshire	7,358	138.57	5,706	234.66	2,350	379.46
Stirling	1,592	101.07	1,339	187.93	670	349.87
West Dunbartonshire	1,911	126.64	1,492	215.86	662	382.00
West Lothian	3,650	150.66	2,574	262.41	896	385.05
SCOTLAND	93,292	104.54	75,402	182.54	35,351	320.70

Source: Home Care Statistical Return

Note ¹: As a result of missing age information for Highland, this affects the rates per 1,000 population by age group.

Annex, Table 13 - Clients who are receiving a Meals Service by age group and Local Authority, 2012

Local Authority	Age group of client						Rate per 1,000 population				
	Unknown	0-64	65-74	75-84	85+	Total	0-64	65-74	75-84	85+	Total
Aberdeen City	0	49	72	222	266	609	0.26	4.40	18.90	62.85	2.76
Aberdeenshire	0	10	39	86	151	286	0.05	1.72	6.50	29.36	1.16
Angus	0	25	55	159	265	504	0.28	4.55	20.47	92.01	4.56
Argyll & Bute	5	6	10	28	57	106	0	1	4.31	23.99	1.18
Clackmannanshire	0	8	18	31	55	112	0.19	3.68	12.01	65.17	2.21
Dumfries & Galloway	0	6	38	128	179	370	0.05	2.09	11.31	45.72	2.50
Dundee City	0	55	96	221	288	660	0.46	7.52	24.25	77.46	4.53
East Ayrshire	0	62	69	168	153	452	0.63	5.79	23.77	62.63	3.76
East Dunbartonshire	0	6	10	27	36	79	0	1	4	15.08	0.76
East Lothian	0	28	66	169	215	478	0.35	6.90	27.84	95.98	4.87
East Renfrewshire	0	0	0	0	0	0	0.00	0	0	0.00	0.00
Edinburgh, City of	7	*	*	19	41	79	*	*	0.76	3.83	0.16
Eilean Siar	0	0	0	0	0	0	0	0	0	0	0
Falkirk	0	16	35	110	125	286	0.12	2.46	13.08	43.33	1.85
Fife	0	50	98	326	494	968	0.17	2.74	15.21	59.08	2.63
Glasgow City	10	49	83	140	154	436	0.09	2.04	4.78	14.91	0.73
Highland	0	13	38	88	109	248	0.07	1.62	6.32	21.01	1.12
Inverclyde	0	*	*	58	61	152	*	*	11.56	34.88	1.92
Midlothian	0	11	10	27	52	100	0.16	1.28	5.88	33.21	1.21
Moray	0	7	13	108	120	248	0.10	1.42	18.77	60.88	2.84
North Ayrshire	0	9	28	73	81	191	0.08	1.94	8.65	27.93	1.41
North Lanarkshire	0	10	14	27	29	80	0.04	0.49	1.63	5.60	0.24
Orkney Islands	0	7	8	15	33	63	0.43	3.41	11.92	73.17	3.13
Perth & Kinross	0	24	50	132	180	386	0.20	3.18	13.03	45.21	2.58
Renfrewshire	0	41	61	168	226	496	0.29	3.87	17.24	67.64	2.91
Scottish Borders	0	33	34	128	161	356	0.37	2.63	16.58	60.94	3.15
Shetland Islands	2	11	34	85	99	231	0.59	15.63	71.43	202.45	10.27
South Ayrshire	0	19	54	194	260	527	0.22	4.22	23.94	79.63	4.72
South Lanarkshire	0	45	58	151	170	393	0.17	2.02	8.33	27.45	1.26
Stirling	0	6	22	49	81	158	0.08	2.55	9.40	42.30	1.74
West Dunbartonshire	0	29	44	87	85	245	0.39	5.38	16.80	49.05	2.71
West Lothian	0	64	52	107	87	310	0.43	3.61	14.30	37.39	1.79
SCOTLAND	24	707	1,246	3,331	4,313	9,621	0.16	2.60	11.00	39.13	1.83

Source: Home Care Statistical Return

Note: 31 clients receive both hot and frozen meals.

Note: Cells with less than 5 have been suppressed to maintain confidentiality. These are indicated with a '*'

A NATIONAL STATISTICS PUBLICATION FOR SCOTLAND

The United Kingdom Statistics Authority has designated these statistics as National Statistics, in accordance with the Statistics and Registration Service Act 2007 and signifying compliance with the Code of Practice for Official Statistics.

Designation can be broadly interpreted to mean that the statistics:

- meet identified user needs;
- are well explained and readily accessible;
- are produced according to sound methods, and
- are managed impartially and objectively in the public interest.

Once statistics have been designated as National Statistics it is a statutory requirement that the Code of Practice shall continue to be observed.

Further information about Official and National Statistics can be found on the UK Statistics Authority website at www.statisticsauthority.gov.uk

SCOTTISH GOVERNMENT STATISTICIAN GROUP

Our Aim

To provide relevant and reliable information, analysis and advice that meet the needs of government, business and the people of Scotland.

For more information on the Statistician Group, please see the Scottish Government website at www.scotland.gov.uk/statistics

Correspondence and enquiries

Enquiries on this publication should be addressed to:

Steven Gillespie
Analytical Services Division
Health Directorate
St Andrews House
EDINBURGH, EH1 3DG
Telephone: 0131 244 3777; Fax:
0131 244 2371
e-mail: Swstat@scotland.gsi.gov.uk

General enquiries on Scottish Government statistics can be addressed to:

Office of the Chief Statistician
Scottish Government
4N.06, St Andrews House
EDINBURGH EH1 3DG
Telephone: (0131) 244 0442
e-mail: statistics.enquiries@scotland.gsi.gov.uk

Further contact details, e-mail addresses and details of previous and forthcoming publications can be found on the Scottish Government Website at www.scotland.gov.uk/statistics

Complaints and suggestions

If you are not satisfied with our service, please write to the Chief Statistician, 4N.06, St Andrews House, Edinburgh, EH1 3DG, Telephone: (0131) 244 0302, e-mail statistics.enquiries@scotland.gsi.gov.uk. We also welcome any comments or suggestions that would help us to improve our standards of service.

ScotStat

If you would like to be consulted about new or existing statistical collections or receive notification of forthcoming statistical publications, please register your interest on the Scottish Government ScotStat website at www.scotland.gov.uk/scotstat

ISSN 1479-7569 ISBN 978-1-78256-249-8

Crown Copyright

Brief extracts from the Crown Copyright material in this publication may be reproduced provided the source is fully acknowledged.