

# Respite Care, Scotland 2012

An Official Statistics Publication for Scotland

Published: 30 October 2012

ISBN: 978-1-78256-210-8

## 1. Introduction

This Statistics Release presents information on respite care services provided or purchased by Local Authorities in Scotland. Respite Care is a service intended to benefit a carer and the person he or she cares for by providing a short break from caring tasks.

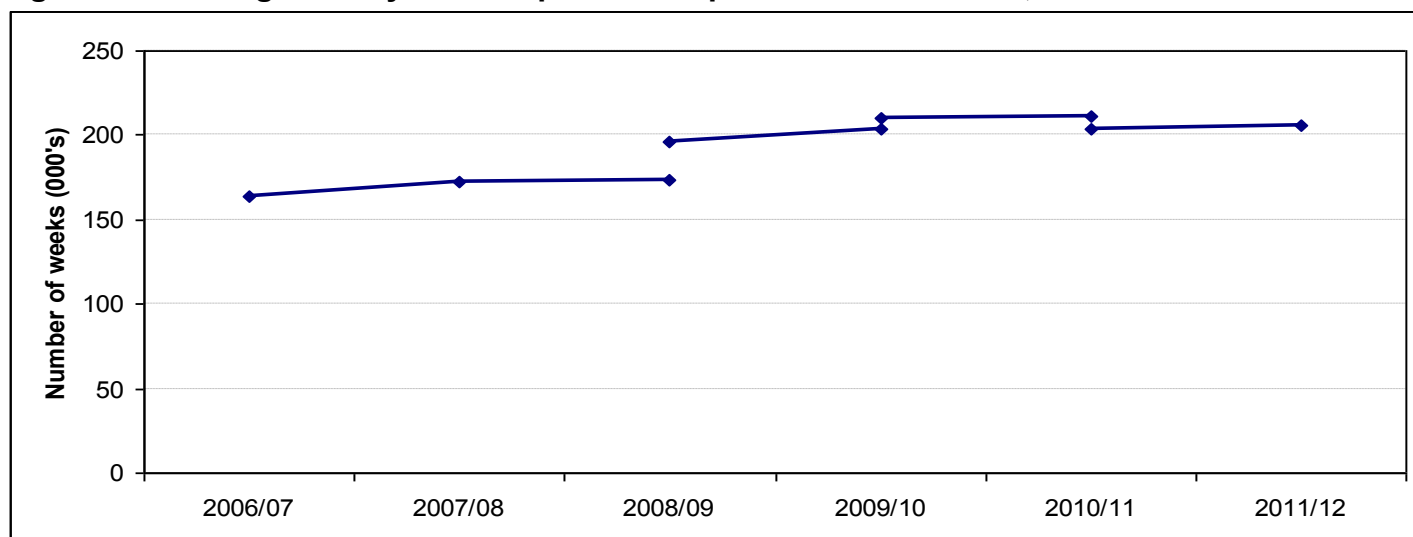
The 2006/07 to 2008/09 figures used in this publication were originally collected and published by each Local Authority in Scotland. Local Authorities were required to collect and publish information on **respite nights** in a Care Home and **respite hours** provided at home as part of their Statutory Performance Indicators (SPIs). The 2009/10, 2010/11 & 2011/12 figures were submitted directly to the Scottish Government.

In this publication, the information has been presented and converted into **respite weeks** to allow presentation of an estimate of the **total number of respite weeks** provided each year in Scotland. In order to calculate this, seven respite nights equal one respite week and 52.5 hours equal one respite week.

**This release presents the results for the last five years to give a picture of:**

- The total number of respite weeks provided by each Local Authority in Scotland
- The amount of daytime and overnight respite provided
- The amount of respite provision by age group

**Figure 1 : Overnight & Daytime Respite weeks provided in Scotland, 2006/07 to 2011/12**



Source: Audit Scotland SPI data 2006/07-2008/09, Scottish Government 2009/10-2011/12

## 2. Main points

This statistics release presents information on the number of respite weeks provided or purchased by Local Authorities in Scotland.

The total number of respite weeks provided in Scotland increased by 1,670 weeks between 2010/11 and 2011/12. This follows previous increases in respite care in between 2007/08 and 2008/09 (1,300 weeks), 2008/09 and 2009/10 (7,860 weeks) and 2009/10 and 2010/11 (1,410 weeks).

There are many different types of respite care. It might involve the cared-for person having a break away from home for a few nights, thus benefitting the carer in that they have time for themselves. Or the carer might have a break away, with services being put in place to support the cared-for person. Some people want to have a break together, with additional support to make this happen. Sometimes the service is provided in the home for the cared-for person, with the carer having time to do something themselves for a couple of hours during the day. This publication looks separately at overnight respite stays and daytime respite care.

The majority (67%) of respite provision occurs during the day rather than overnight. In 2006/07 61% of respite was provided during the day, this had increased each year until 2011/12 where the percentage of daytime provision has decreased from 68% to 67%.

The number of daytime weeks provided has increased from 100,050 in 2006/07 to 138,500 in 2011/12, whilst the number of overnight weeks has increased from 63,590 in 2006/07 to 66,900 in 2011/12, following an initial decrease between 2006/07 and 2007/08.

Respite provision to older people (aged 65+) has shown a shift to the provision of more daytime respite than overnight, as 56% of respite in 2006/07 was provided during the day, this is now nearly 63% in 2011/12. When compared with the other age groups older people receive a smaller proportion of their respite during the day.

Adults (aged 18-64) receive nearly 74% of their respite during the day, this has increased each year from 68% in 2006/07 and this age group, when compared to the other age groups receive a higher proportion of their respite during the day.

The provision of respite to younger people (aged 0-18) has varied since 2006/07, although the overall trend is for the percentage of daytime respite provided has increase from 62% to 67% in 2011/12. This is due to an increase in daytime provision and a decrease in overnight respite provide.

### 3. Total number of respite weeks provided in Scotland

This statistical release presents the number of respite weeks provided to all age groups within Scotland.

Over the last few years, Local Authorities have been improving and refining their data collection methodologies (see section 4.2.2 for further details). This means that two different figures are presented for each year: 1) a comparable figure based on the same methodology as the previous year; and 2) a figure based on the revised methodology, which is not comparable to previous years but comparable going forward. Using this approach allows Local Authorities to revise their methodologies whilst still allowing for actual changes in respite provision to be identified.

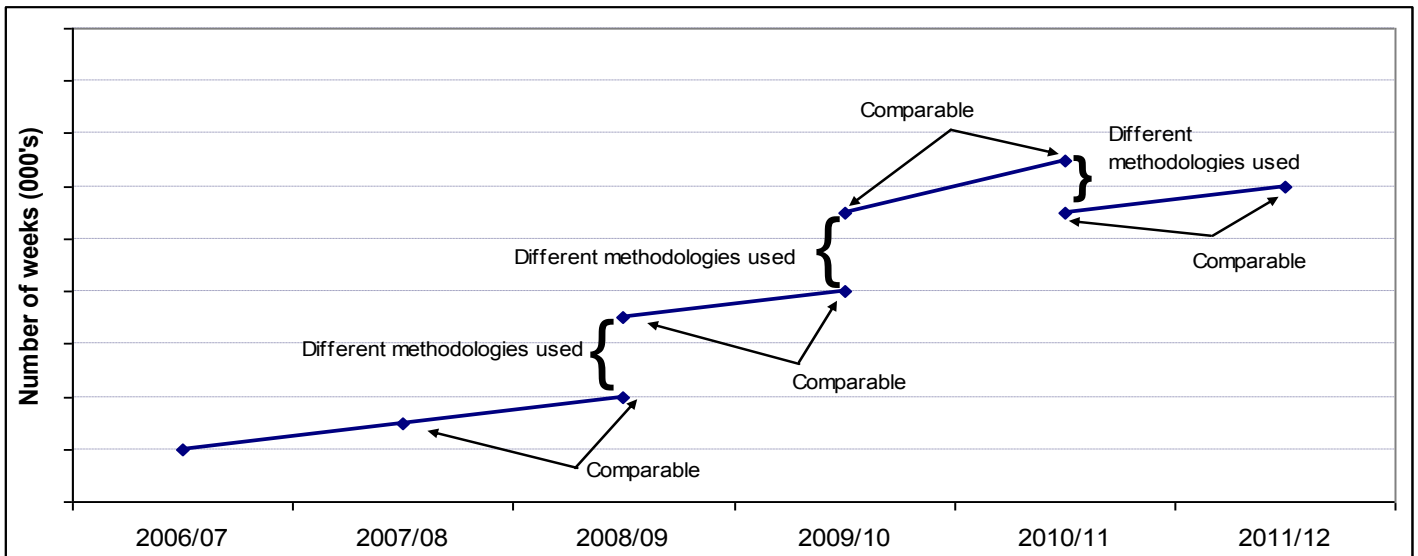
The diagrams below shows how the figures will be presented in this release within tables and charts. There are four sets of comparable figures, 2007/08<sup>1</sup> & 2008/09<sup>1</sup>, 2008/09<sup>2</sup> & 2009/10<sup>2</sup>, 2009/10<sup>3</sup> & 2010/11<sup>3</sup> and 2010/11<sup>4</sup> & 2011/12<sup>4</sup>.

**Diagram 1: Example presentation of respite figures (Table)**

		Number of respite weeks provided								
		2006/07	2007/08 <sup>1</sup>	2008/09 <sup>1</sup>	2008/09 <sup>2</sup>	2009/10 <sup>2</sup>	2009/10 <sup>3</sup>	2010/11 <sup>3</sup>	2010/11 <sup>4</sup>	2011/12 <sup>4</sup>
Example weeks		XX,XXX	XX,XXX	XX,XXX	XX,XXX	XX,XXX	XX,XXX	XX,XXX	XX,XXX	XX,XXX
			Comparable		Comparable		Comparable		Comparable	

- <sup>1</sup> - Same methodology used in 2007/08 & 2008/09 making the figures comparable
- <sup>2</sup> - Same methodology used in 2008/09 & 2009/10 making the figures comparable
- <sup>3</sup> - Same methodology used in 2009/10 & 2010/11 making the figures comparable
- <sup>4</sup> - Same methodology used in 2010/11 & 2011/12 making the figures comparable

**Diagram 2: Example presentation of respite figures (Chart)**



Refer to the background notes for more details on methodology changes and to the annexes for detailed information on respite weeks provided in each Local Authority in Scotland.

### 3.1 Respite weeks provided to all ages

Table 1 presents four different sets of comparable data which each show an increase in respite provision. The increase in the **total number of respite weeks** for each year is:

- increase of 0.8% (1,300 weeks) from 172,730 in 2007-08<sup>1</sup> to 174,030 in 2008/09<sup>1</sup>
- Increase of 4.0% (7,860 weeks) from 195,710 in 2008/09<sup>2</sup> to 203,570 in 2009/10<sup>2</sup>
- increase of 0.7% (1,410 weeks) from 209,800 in 2009/10<sup>3</sup> to 211,210 in 2010/11<sup>3</sup>
- increase of 0.8% (1,670 weeks) from 203,730 in 2010/11<sup>4</sup> to 205,400 in 2011/12<sup>4</sup>.

Looking at respite provision over all four of the different sets of comparable figures in Table 1, shows an increased from 172,730 weeks in 2007/08 to 205,400 weeks in 2011/12. This is a total increase of 32,670 weeks over the time period, of which 20,430 weeks is due to improved data recording and/or methodology changes and the remaining 12,240 weeks is due to an actual increase in respite provision.

**Table 1: Number of respite weeks provided in Scotland, 2006/07 to 2011/12**

Respite weeks	Number of respite weeks provided <sup>5</sup>								
	2006/07	2007/08 <sup>1</sup>	2008/09 <sup>1</sup>	2008/09 <sup>2</sup>	2009/10 <sup>2</sup>	2009/10 <sup>3</sup>	2010/11 <sup>3</sup>	2010/11 <sup>4</sup>	2011/12 <sup>4</sup>
Overnight	63,590	62,750	62,800	62,730	64,110	64,290	64,650	64,900	66,900
Daytime	100,050	109,980	111,230	132,980	139,460	145,510	146,570	138,820	138,500
<b>Total</b>	<b>163,640</b>	<b>172,730</b>	<b>174,030</b>	<b>195,710</b>	<b>203,570</b>	<b>209,800</b>	<b>211,210</b>	<b>203,730</b>	<b>205,400</b>
<b>% of respite (Daytime)</b>	61%	64%	64%	68%	69%	69%	69%	68%	67%

Source: Audit Scotland SPI data 2006/07-2008/09, Scottish Government 2009/10, 2010/11 & 2011/12

<sup>1</sup> - Same methodology used in 2007/08 & 2008/09 making the figures comparable

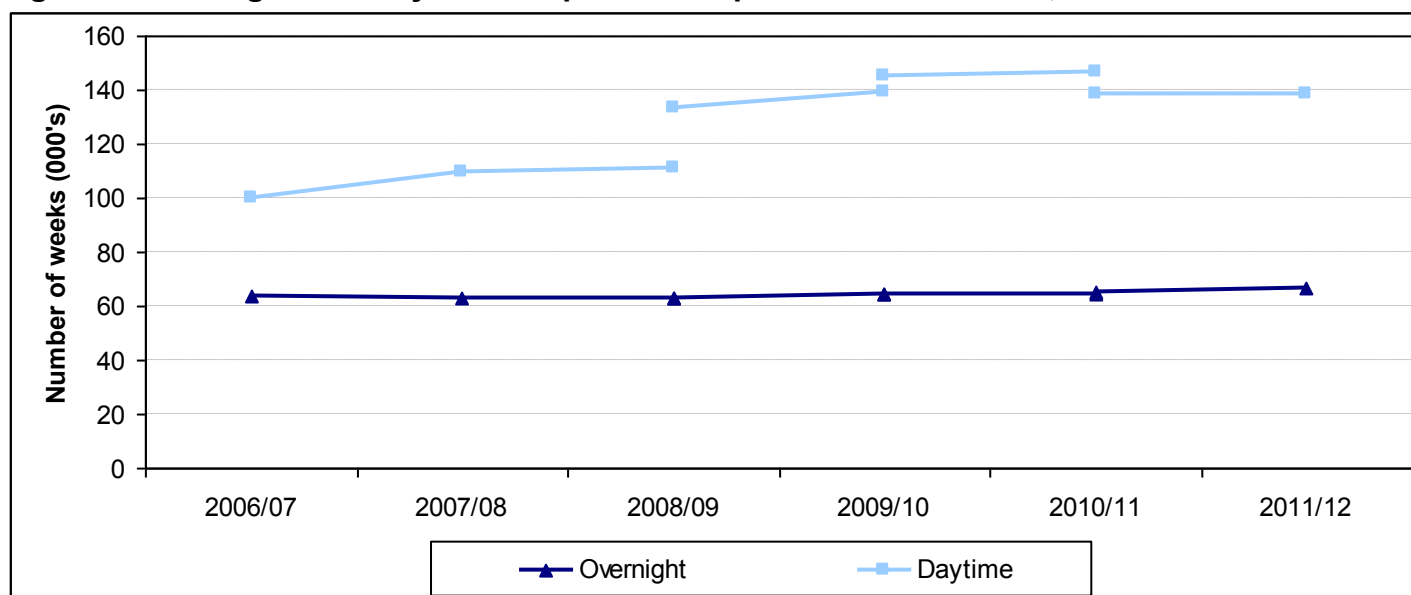
<sup>2</sup> - Same methodology used in 2008/09 & 2009/10 making the figures comparable

<sup>3</sup> - Same methodology used in 2009/10 & 2010/11 making the figures comparable

<sup>4</sup> - Same methodology used in 2010/11 & 2011/12 making the figures comparable

<sup>5</sup> All figures rounded to the nearest ten.

**Figure 2: Overnight and Daytime Respite weeks provided in Scotland, 2006/07 to 2011/12**



Source: Audit Scotland SPI data 2006/07-2008/09, Scottish Government 2009/10, 2010/11 & 2011/12

Looking more closely at Table 1 and the type of respite provided it is clear that the majority of respite provided is daytime. In 2006/07 daytime respite accounted for 61% of all respite provided, this increased to 67% in 2011/12. This percentage has been affected by methodology changes as local authorities find it much harder to identify daytime respite. For further details please refer to the background notes.

### 3.2 Respite weeks provided to older adults (Aged 65+)

Table 2 presents four different sets of comparable data which each show an increase in respite provision. The increase in the total number of **respite weeks provided to older adults aged 65 and over** in Scotland for each year is:

- increase of 3.4% (3,010 weeks) from 89,730 in 2007/08<sup>1</sup> to 92,740 in 2008/09<sup>1</sup>
- increase of 1.8% (1,830 weeks) from 103,870 in 2008/09<sup>2</sup> to 105,700 in 2009/10<sup>2</sup>
- increase of 0.9% (1,020 weeks) from 108,510 in 2009/10<sup>3</sup> to 109,530 in 2010/11<sup>3</sup>
- increase of 2.6% (2,140 weeks) from 103,250 in 2010/11<sup>4</sup> to 105,390 in 2011/12<sup>4</sup>.

Looking at respite provision over all four of the different sets of comparable figures in Table 2, shows an increased from 89,730 weeks in 2007/08 to 105,390 weeks in 2011/12. This is a total increase of 15,660 weeks over the time period, of which 7,660 weeks is due to improved data recording and/or methodology changes and the remaining 8,000 weeks is due to an actual increase in respite provision.

**Table 2: Number of respite weeks provided to older adults (Aged 65+) in Scotland, 2006/07 to 2011/12**

	Number of respite weeks provided <sup>5</sup>								
Respite weeks	2006/07	2007/08 <sup>1</sup>	2008/09 <sup>1</sup>	2008/09 <sup>2</sup>	2009/10 <sup>2</sup>	2009/10 <sup>3</sup>	2010/11 <sup>3</sup>	2010/11 <sup>4</sup>	2011/12 <sup>4</sup>
Overnight	37,250	36,870	36,040	35,990	35,740	35,790	37,620	37,610	39,120
Daytime	48,020	52,860	56,700	67,880	69,960	72,720	71,910	65,640	66,270
<b>Total</b>	<b>85,270</b>	<b>89,730</b>	<b>92,740</b>	<b>103,870</b>	<b>105,700</b>	<b>108,510</b>	<b>109,530</b>	<b>103,250</b>	<b>105,390</b>
<b>% of respite (Daytime)</b>	56%	59%	61%	65%	66%	67%	66%	64%	63%

Source: Audit Scotland SPI data 2006/07-2008/09, Scottish Government 2009/10, 2010/11 & 2011/12

<sup>1</sup> - Same methodology used in 2007/08 & 2008/09 making the figures comparable

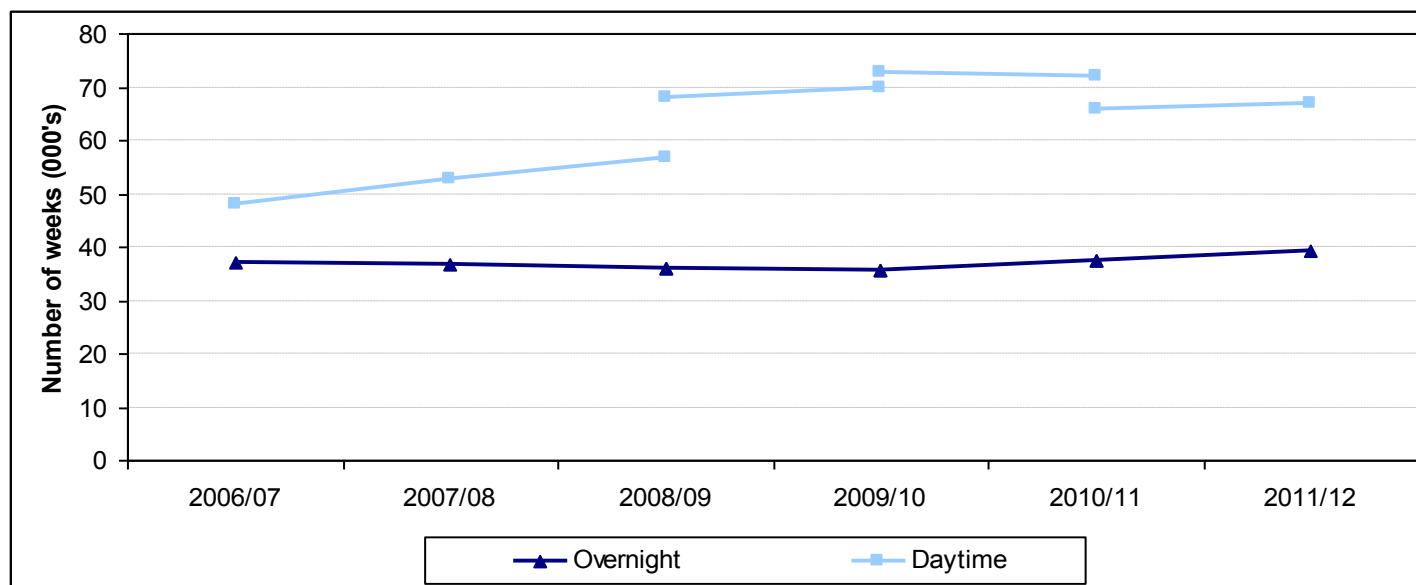
<sup>2</sup> - Same methodology used in 2008/09 & 2009/10 making the figures comparable

<sup>3</sup> - Same methodology used in 2009/10 & 2010/11 making the figures comparable

<sup>4</sup> - Same methodology used in 2010/11 & 2011/12 making the figures comparable

<sup>5</sup> - All figures rounded to the nearest ten.

**Figure 3: Overnight and Daytime Respite weeks provided to older adults (Aged 65+) in Scotland, 2006/07 to 2011/12**



Source: Audit Scotland SPI data 2006/07-2008/09, Scottish Government 2009/10, 2010/11 & 2011/12

Table 2 shows that the majority of respite provided to older adults is daytime respite. In 2006/07 daytime respite accounted for 56% of all respite provided, this increased to 63% in 2011/12. This percentage has been affected by methodology changes as local authorities find it much harder to identify daytime respite. For further details please refer to the background notes.

### 3.3 Respite weeks provided to adults (Aged 18 to 64)

Table 3 presents four different sets of comparable data which each show the change in respite provision. The change in the total number total number of respite weeks provided to adults aged from 18 to 64 in Scotland in each year is:

- a decrease of 1.0% (590 weeks) from 59,050 in 2007/08<sup>1</sup> to 58,460 in 2008/09<sup>1</sup>
- an increase of 6.8% (4,720 weeks) from 69,070 in 2008/09<sup>2</sup> to 73,090 in 2009/10<sup>2</sup>
- an increase of 0.9% (690 weeks) from 76,950 in 2009/10<sup>3</sup> to 77,640 in 2010/11<sup>3</sup>
- a decrease of 0.7% (560 weeks) from 77,640 in 2010/11<sup>4</sup> to 77,040 in 2011/12<sup>4</sup>.

Looking at respite provision over all four of the different sets of comparable figures in Table 3, shows an increase from 59,050 weeks in 2007/08 to 77,040 weeks in 2011/12. This is a total increase of 17,990 weeks over the time period, of which 13,770 weeks is due to improved data recording and/or methodology changes and the remaining 4,220 weeks is due to an actual increase in respite provision.

**Table 3: Number of respite weeks provided to adults (Aged 18 to 64) in Scotland, 2006/07 to 2011/12**

Respite weeks	Number of respite weeks provided <sup>5</sup>								
	2006/07	2007/08 <sup>1</sup>	2008/09 <sup>1</sup>	2008/09 <sup>2</sup>	2009/10 <sup>2</sup>	2009/10 <sup>3</sup>	2010/11 <sup>3</sup>	2010/11 <sup>4</sup>	2011/12 <sup>4</sup>
Overnight	17,650	18,030	18,760	18,690	20,180	20,300	19,550	19,850	20,120
Daytime	38,120	41,020	39,700	50,380	53,620	56,650	58,090	57,790	56,920
<b>Total</b>	<b>55,770</b>	<b>59,050</b>	<b>58,460</b>	<b>69,070</b>	<b>73,790</b>	<b>76,950</b>	<b>77,640</b>	<b>77,640</b>	<b>77,040</b>
<b>% of respite (Daytime)</b>	68%	69%	68%	73%	73%	74%	75%	74%	74%

Source: Audit Scotland SPI data 2006/07-2008/09, Scottish Government 2009/10, 2010/11 & 2011/12

<sup>1</sup> - Same methodology used in 2007/08 & 2008/09 making the figures comparable

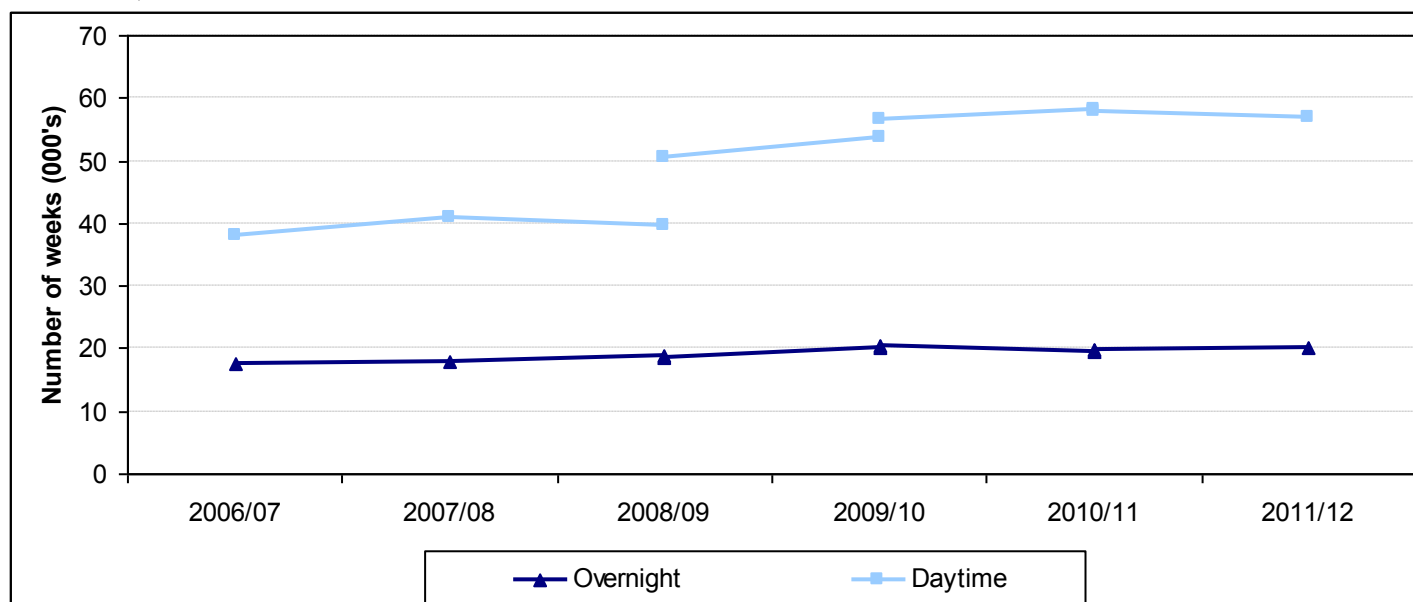
<sup>2</sup> - Same methodology used in 2008/09 & 2009/10 making the figures comparable

<sup>3</sup> - Same methodology used in 2009/10 & 2010/11 making the figures comparable

<sup>4</sup> - Same methodology used in 2010/11 & 2011/12 making the figures comparable

<sup>5</sup> - All figures rounded to the nearest ten.

**Figure 4: Overnight and Daytime Respite weeks provided to adults (Aged 18 to 64) in Scotland, 2006/07 to 2011/12**



Source: Audit Scotland SPI data 2006/07-2008/09, Scottish Government 2009/10, 2010/11 & 2011/12

Table 3 shows that in 2006/07 daytime respite accounted for 68% of all respite provided, rising to 74% in 2011/12, which is the highest percentage for any age group. This percentage has been affected by methodology changes as local authorities find it much harder to identify daytime respite. For further details please refer to the background notes.

### 3.4 Respite weeks provided to young people (Aged 0 to 17)

Table 4 presents four different sets of comparable data which each show the change in respite provision. The change in the total number of respite weeks provided to young people aged from 0 to 17 in Scotland in each year is:

- a decrease of 4.7% (1,120 weeks) from 23,950 in 2007/08<sup>1</sup> to 22,830 in 2008/09<sup>1</sup>
- an increase of 5.8% (1,310 weeks) from 22,770 in 2008/09<sup>2</sup> to 24,080 in 2009/10<sup>2</sup>
- a decrease of 1.2% (300 weeks) from 24,340 in 2009/10<sup>3</sup> to 24,040 in 2010/11<sup>3</sup>
- an increase of 0.6% (140 weeks) from 22,830 in 2010/11<sup>4</sup> to 22,970 in 2011/12<sup>4</sup>.

Looking at respite provision over all four of the different sets of comparable figures in Table 3, shows an increased from 23,950 weeks in 2007/08 to 22,970 weeks in 2011/12. This is a decrease of 980 weeks over the time period, which is due to improved data recording and/or methodology changes as there has been a 30 week increase in actual respite provision over the time period.

**Table 4: Number of respite weeks provided to young people (Aged 0 to 17) in Scotland, 2006/07 to 2011/12**

Respite weeks	Number of respite weeks provided <sup>5</sup>								
	2006/07	2007/08 <sup>1</sup>	2008/09 <sup>1</sup>	2008/09 <sup>2</sup>	2009/10 <sup>2</sup>	2009/10 <sup>3</sup>	2010/11 <sup>3</sup>	2010/11 <sup>4</sup>	2011/12 <sup>4</sup>
Overnight	8,690	7,850	8,000	8,050	8,200	8,200	7,470	7,450	7,670
Daytime	13,920	16,100	14,830	14,720	15,880	16,140	16,570	15,390	15,300
<b>Total</b>	<b>22,610</b>	<b>23,950</b>	<b>22,830</b>	<b>22,770</b>	<b>24,080</b>	<b>24,340</b>	<b>24,040</b>	<b>22,830</b>	<b>22,970</b>
<b>% of respite (Daytime)</b>	62%	67%	65%	65%	66%	66%	69%	67%	67%

Source: Audit Scotland SPI data 2006/07-2008/09, Scottish Government 2009/10, 2010/11 & 2011/12

<sup>1</sup> - Same methodology used in 2007/08 & 2008/09 making the figures comparable

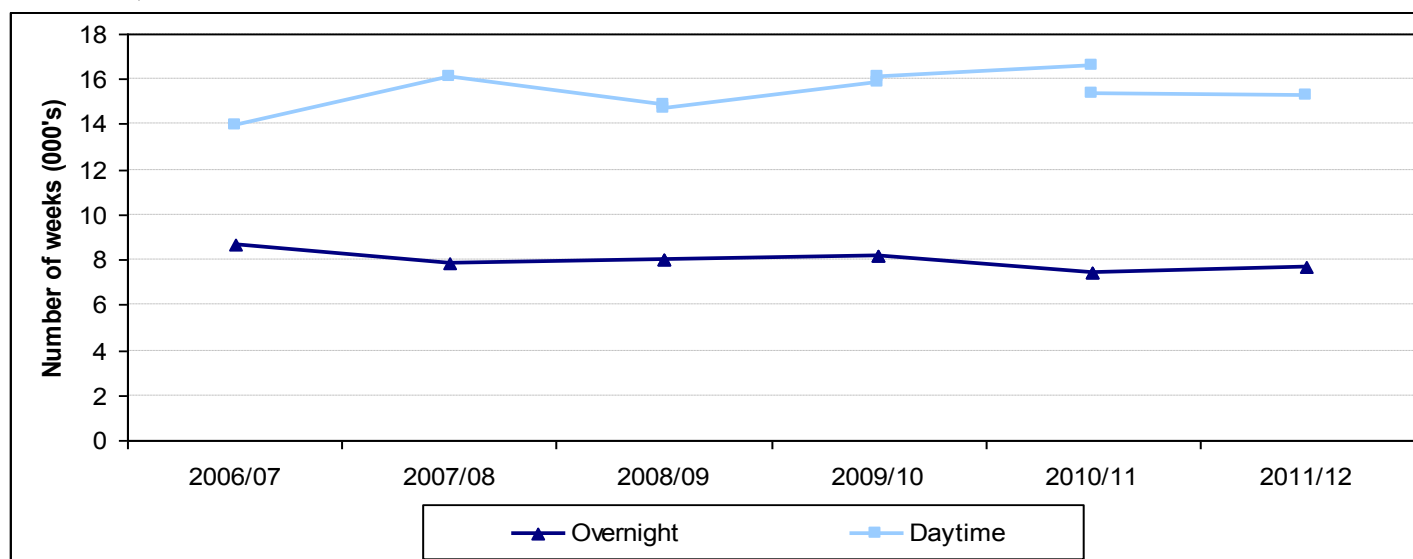
<sup>2</sup> - Same methodology used in 2008/09 & 2009/10 making the figures comparable

<sup>3</sup> - Same methodology used in 2009/10 & 2010/11 making the figures comparable

<sup>4</sup> - Same methodology used in 2010/11 & 2011/12 making the figures comparable

<sup>5</sup> - All figures rounded to the nearest ten.

**Figure 5: Overnight and Daytime Respite weeks provided to young people (Aged 0 to 17) in Scotland, 2006/07 to 2011/12**



Source: Audit Scotland SPI data 2006/07-2008/09, Scottish Government 2009/10, 2010/11 & 2011/12



Looking more closely at Table 4 shows that the majority of respite provided is daytime. In 2006/07 daytime respite accounted for 62% of all respite provided, this is now 67% 2011/12. This percentage has been affected by methodology changes as local authorities find it much harder to identify daytime respite. For further details please refer to the background notes.

## **4. Background information on the collection of the data**

### **4.1 Data Sources**

#### **Audit Scotland (2006/07 to 2008/09)**

This data was provided to Audit Scotland by all Local Authorities in Scotland as one of the Statutory Performance Indicators (SPIs). The information was collected and published locally by each council in Scotland. Audit Scotland publishes information about the comparative performance of councils across Scotland in a compendium of all the data. These are available from [www.audit-scotland.gov.uk/performance/index.php](http://www.audit-scotland.gov.uk/performance/index.php), but please note that all respite figures have been superseded with those presented in this publication.

#### **Scottish Government (2009/10, 2010/11 & 2011/12)**

The Scottish Government is now responsible for the collection of respite data. This follows Audit Scotland's decision to discontinue the collection of the SPI data for respite care.

### **4.2 Understanding the Statistics in this Report.**

All information in this Statistics Release is based on a year from 1st April to 31st March.

In order to provide an estimate of total respite provision across Scotland, respite nights and respite hours have been converted into respite weeks. In order to calculate this, seven respite nights equal one respite week and 52.5 hours equal one respite week. This standard method was agreed by CoSLA and the Scottish Government.

The figures published in this Statistics Release were last published on 25 October 2011.

As part of the collection of the 2011/12 data Local Authorities were given the opportunity to check their respite figures to ensure that they were correct and any large increases or decreases between years were questioned. This validation work has resulted in the following changes to the figures previously published.

#### **Daytime respite**

One Local Authority identified an error in the previously published daytime respite data and provided revised figures for the publication. They are:

- Renfrewshire – revised Older Adults (aged 65) for 2010/11 as an error identified in figures originally supplied. Decrease in respite hours of 1,973 hours (38 weeks).

#### **4.2.1 Methodology used by Local Authorities**

Local Authorities were asked to provide full details of the methodology they use to identify respite provision based on the Audit Scotland guidance.

The collection of respite data is something that has proved to be very complex for Local Authorities to capture. This means that each Local Authority may use a variety of data collection methods and sources of information to collect the required information as specified in the Audit Commission guidelines. (Refer to Annex 7).

The data is collected from either management/financial information systems, from manual records or direct from private/voluntary respite suppliers and is most commonly a combination of these data sources.

The data will also incorporate a number of different services depending on the services available within a Local Authority, examples of the services included are;

- Day Care
- Home Care
- Short Breaks/Holiday breaks
- Direct payments

Figures are not comparable between Local Authorities due to the different methodologies used. An example of this is the counting of respite as both daytime and overnight support, when the services are received in the same episode of respite care.

The Audit Commission Guide for 2005/06 and 2006/07 stated “Where a single episode of respite care involves both daytime and overnight support, count both the nights and the daytime hours” (p50). This sentence was removed from the guidance for 2007/08 onwards.

There are four Local Authorities that have used this methodology beyond 2007/08:

- Edinburgh (this ceased in 2010/11)
- Fife (from 2008/09 to 2010/11)
- Moray (only for Respite provided in the home, this ceased in 2009/10)
- West Dunbartonshire (only for Respite provided to a small number of Young people (aged 0 to 17))

Overall respite provision in these areas may appear to be higher than other areas for the years affected because they were, in effect, over counting their Care Home and Homecare respite provision. If a client has a week of respite in a Care Home, then most Local Authorities simply count this as 7 nights (=1 respite week). If a Local Authority counts this as 7 nights and 12 hours for each of 7 days then this is equal to 2.6 respite weeks.

To further improve the comparability of the data collected a working group has been established to review the definitions and guidance used.

#### **4.2.2 Methodology changes over time**

Local Authorities were asked whether they used exactly the same methodology to measure respite provision each year.

A total of 22 Local Authorities have changed their methodology between 2007/08 and 2011/12 (further details provided in the following pages). In many cases, Local Authorities began counting services which had been running for some time but which had not previously been included in the figures.

In these cases, a comparable figure based on the same methodology as the previous year and a figure based on a revised methodology, which is not comparable to previous years but comparable going forward has been applied depending when the methodology changes happened. This allows us to see any genuine increase in services provision from 2007/08 onwards, whilst allowing for an improved count of respite care data to be provided by the Local Authorities.

This means that two sets of figures are published for each year as follows:

- 2008/09<sup>1</sup> - This figure is produced using the same methodology as was used in 2007/08 and is therefore only comparable with 2007/08.
- 2008/09<sup>2</sup> - This figure is produced using the same methodology as was used in 2009/10<sup>2</sup> and is therefore only comparable with 2009/10<sup>2</sup>.
- 2009/10<sup>2</sup> - This figure is produced using the same methodology as was used in 2008/09<sup>2</sup> and is therefore only comparable with 2008/09<sup>2</sup>.
- 2009/10<sup>3</sup> - This figure is produced using the same methodology as was used in 2010/11<sup>3</sup> and is therefore only comparable with 2010/11<sup>3</sup>.
- 2010/11<sup>3</sup> - This figure is produced using the same methodology as was used in 2009/10<sup>3</sup> and is therefore only comparable with 2009/10<sup>3</sup>.
- 2010/11<sup>4</sup> - This figure is produced using the same methodology as was used in 2011/12 and is therefore only comparable with 2011/12.

Please note that the Local Authorities were not asked if any methodology changes were made between 2006/07 & 2007/08. Therefore it is not known if these figures are comparable for all Local Authorities.

Further details on the Local Authorities who changed their methodology are given below:

- Aberdeen City – Prior to 2008/09, included Direct Payments, after school clubs and play schemes in the Children daytime respite figure; from 2008/09 these were excluded. In 2010/11 an adult daytime service was reclassified as providing day care services rather than respite and this alone has resulted in a drop in hours provided in a day care centre. It was not possible to re-calculate the 2009/10 figures to adjust for this change in methodology.
- Aberdeenshire – Improved data collection in 2008/09 by identifying a number of additional methods of recording respite that weren't included in 2007/08. In 2009/10 an exercise was carried out that identified a large number of specifically 18-64 daytime respite packages that were inappropriately recorded. This exercise was not repeated for 2010/11. In 2011/12 changed how day care sessions are accounted for. It has been agreed from 2011/12 that a full session should be counted as 6 hours and a half session counted as 3 hours. Previously these have been counted that a session equals one hour. Provided revised 2010/11 figures to ensure comparability over time.
- Angus – Prior to 2008/09, respite provided in day centres wasn't included. In 2009/10, improved data collection to ensure that returns from a service provider only included clients who attended specifically to provide respite. In 2010/11 re-classified a day time service for adults (aged 18-64) as non-respite; 2009/10<sup>3</sup> figure has been provided to reflect this change.

- Dumfries & Galloway – In 2010/11 improved methodology to include an overnight block contract for older adults (aged 65+); 2009/10<sup>3</sup> figure has been provided to reflect this change.
- Dundee City – In 2008/09, Home Care enablement services were included for the first time. In 2010/11 to improve collection methodology now using information management system to provide daytime hours, 2009/10<sup>3</sup> figure has been provided to reflect this change.
- East Ayrshire – In 2008/09, started to include adult day care respite not in a day centre.
- Edinburgh – In 2009/10 migrated data held by Children and Families Centres in standalone databases to central system as this provided an opportunity to improve data quality and realign the client categories of children receiving a service from these centres. Unable to provide revised figures for either 2008/09 or 2009/10. Changed methodology in 2011/12 so that no daytime hours related to overnight stays are included, provided revised 2010/11 figures.
- Falkirk – In 2009/10 improved methodology for identifying overnights provided to all clients and daytime hours for young adults. The 2008/09<sup>2</sup> figure for daytime hours and overnight nights is based on this methodology, to produce a comparable figure to 2009/10<sup>2</sup>.
- Fife – In 2008/09, Adult day care centres were included for the first time. Also began recording daytime hours in conjunction with overnight respite, so overnight respite in a Care Home would count as 1 night and 12 hours. In 2009/10 improved collection methodology to include daytime hours for services not previously recorded, the 2009/10<sup>3</sup> figure reflects this change and is comparable with 2010/11<sup>3</sup>. Changed methodology in 2011/12 so that no daytime hours related to overnight stays are included, provided revised 2010/11 figures.
- Glasgow City – In 2010/11, improved methodology so that the hours of respite provided by purchased services are now included. The 2010/11<sup>4</sup> reflects this improvement and is comparable with 2011/12. Ongoing modernisation of services makes the capture of all respite activity difficult due to the personalisation of services and a focus on outcomes for service users.
- Highland – In 2009/10 improved methodology for identifying overnights provided to clients aged 65 and over, which had previously been under reported. The 2008/09<sup>2</sup> figure for overnight nights is based on this methodology, to produce a comparable figure to 2009/10<sup>2</sup>.
- Inverclyde – In 2008/09, began counting respite provided by contracted services and included additional homecare services. In 2009/10 improved methodology further for identifying daytime hours provided to clients aged 65 and over. The 2008/09<sup>2</sup> figure for daytime hours is based on this methodology, to produce a comparable figure to 2009/10<sup>2</sup>.

- Midlothian - In 2009/10 improved methodology for identifying respite provision to young adults (aged 0 -17). The 2008/09<sup>2</sup> figures for daytime hours and overnight nights are based on this methodology, to produce a comparable figure to 2009/10<sup>2</sup>. In 2011/12 recording systems improved so that clients attending respite in an adult day centre not owned by Midlothian Council can be counted; provided revised 2010/11 figures.
- Moray – In 2009/10 changed methodology so that no daytime hours were included for overnight stays and are now including direct payments provide to clients for respite care. The 2008/09<sup>2</sup> figure for daytime hours is based on this methodology, to produce a comparable figure to 2009/10<sup>2</sup>.
- North Lanarkshire – Due to ongoing modernisation of services from building based to community based, it has proved difficult to capture all respite activity. Unable to provide revised figures for either 2008/09 or 2009/10.
- Orkney Islands – In 2008/09, began counting respite provided by Crossroads, through direct payments and Childcare summer play scheme. In 2009/10, improved methodology so that the hours of respite provided are for clients where "respite is an explicit reason for this service recorded in the care plan of the carer or the cared-for person". The 2009/10<sup>3</sup> reflects this improvement and is comparable with 2010/11.
- Renfrewshire – In 2009/10, identified that provision was being overestimated; revised methodology for identifying daytime hours for Young Adults (aged 0-17). The 2008/09<sup>2</sup> figure for daytime hours is based on this methodology, to produce a comparable figure to 2009/10<sup>2</sup>.
- Scottish Borders – In 2009/10 improved methodology for identifying overnights provided to clients. The 2008/09<sup>2</sup> figure for overnight nights is based on this methodology, to produce a comparable figure to 2009/10<sup>2</sup>.
- Shetland Islands - In 2009/10, improved methodology to include previously unreported day care respite provided by one of their establishments. The 2009/10<sup>3</sup> reflects this improvement and is comparable with 2010/11. In 2010/11, improved methodology to include previously unreported daytime respite provided by day care units within the Council's residential establishments. The 2010/11<sup>4</sup> reflects this improvement and is comparable with 2011/12.
- South Ayrshire – In 2009/10, improved methodology to include the hours of respite provided for clients in a day care centre. The 2009/10<sup>3</sup> reflects this improvement and is comparable with 2010/11.
- West Dunbartonshire – In 2008/09, improvements made to how home care respite captured. Unable to provide revised figures for 2008/09.
- West Lothian – In 2009/10, reviewed users receiving day care and identified that an element of the care provided was respite. The 2008/09<sup>2</sup> figure for daytime hours is based on this methodology, to produce a comparable figure to 2009/10<sup>2</sup>.

One Local Authority changed their methodology in 2011/12 but were unable to change the 2010/11 data based on this new methodology therefore they have provided 2011/12 figures based on the methodology used in 2010/11. The details are as follows;

- Angus – In 2011/12, introduced a new charging policy for Social Work and Health which has improved the data recording which now allows for additional daytime respite to be identified which was previously being under-recorded/reported. To ensure that the 2011/12 figure would be comparable with 2010/11 Angus council provided an estimated figure based on the old methodology, of 104,000 hours respite provision in a day care centre for people aged 65+. If the new methodology had been used this figure would have been 120,954 hours.

#### **4.2.3 Reasons for large increases/decreases in respite provision**

Any large increases or decreases (+/- 20%) in respite provision for each of the six categories below were queried with the Local Authorities concerned:

- Older Adults (aged 65+), overnight respite
- Older Adults (aged 65+), daytime respite
- Adults (aged 18 to 64), overnight respite
- Adults (aged 18 to 64), daytime respite
- Young people (aged 0 to 17), overnight respite
- Young people (aged 0 to 17), daytime respite.

Some of the reasons identified for the increase or decreases within Local Authorities are detailed below:

##### **Increases in provision**

- Due to additional places, beds and funding being made available from existing services
- As a result of new units/services being made available
- Due to the shift in the balance of care making more flexible/alternative respite available.

##### **Decreases in provision**

- Due to budget and staffing pressures within the Councils.
- Due to a drop in demand or clients preferring to opt for non-respite services.
- Due to the shift to alternative more flexible services that are not counted as respite.

### 4.3 Cost of respondent burden

To calculate the cost of respondent burden to this survey each Local Authority was asked to provide an estimate of the time taken in hours to extract the requested information and complete the survey form. The average time from 13 Local Authorities has then been used within the calculation below to calculate that the total cost of responding to this survey is £25,565.

$$\begin{array}{r} \text{Cost of} \\ \text{responding} \\ \text{ (£)} \end{array} = \begin{array}{r} \text{(number of responses)} \\ \times \\ \text{median time it takes to respond in hours} \\ \times \\ \text{hourly rate of typical respondent)} \end{array} + \begin{array}{r} \text{any additional} \\ \text{costs experienced} \\ \text{by data providers} \end{array}$$

### 4.4 Further information

Further details and analysis of the data presented in this Statistics Release are available on request from the address given below. The Statistics Release is available on the Internet by accessing the Scottish Governments web site: –

<http://www.scotland.gov.uk/Topics/Statistics/Browse/Health/Publications>

Information at local authority level is shown in the annex to this Statistics Release.

#### **Health Analytical Services Division**

DG Health & Social Care: The Quality Unit  
Basement Rear  
St Andrews House  
Edinburgh  
EH1 3DG

Contact: Steven Gillespie  
Tel: 0131 244 3777  
E-mail: SWStat@scotland.gov.uk

This statistics release was published on 30<sup>th</sup> October 2012.



## **5. ANNEX**

The Annex provides more detailed information:

**Annex 1** – Total respite weeks by Local Authority, 2006/07 to 2011/12.

**Annex 2** – Overnight respite weeks by Local Authority, 2006/07 to 2011/12.

**Annex 3** – Daytime respite weeks by Local Authority, 2006/07 to 2011/12.

**Annex 4** – Respite weeks by Local Authority provided to Older People (Aged 65+), 2006/07 to 2011/12.

**Annex 5** – Respite weeks by Local Authority provided to Adults (Aged 18 to 64), 2006/07 to 2011/12.

**Annex 6** – Respite weeks by Local Authority provided to Young People (Aged 0 to 17), 2006/07 to 2011/12.

**Annex 7** – Audit Scotland guidance on Respite Services SPI.

## Annex 1 – Total respite weeks by Local Authority, 2006/07 to 2011/12.

Local Authority	Total respite weeks provided								
	2006/07	2007/08 <sup>1</sup>	2008/09 <sup>1</sup>	2008/09 <sup>2</sup>	2009/10 <sup>2</sup>	2009/10 <sup>3</sup>	2010/11 <sup>3</sup>	2010/11 <sup>4</sup>	2011/12 <sup>4</sup>
Aberdeen City	4,210	6,110	4,740	4,250	3,250	3,250	3,090	3,090	3,570
Aberdeenshire	4,910	5,580	5,610	6,000	7,200	7,200	6,710	7,710	7,860
Angus	1,850	1,940	2,110	3,410	3,830	3,810	3,810	3,810	4,340
Argyll & Bute	3,700	3,580	3,620	3,620	4,610	4,610	4,460	4,460	3,860
Clackmannanshire	1,010	3,310	3,300	3,300	3,250	3,250	3,070	3,070	3,000
Dumfries & Galloway	2,370	2,320	1,980	1,980	1,980	2,400	2,730	2,730	2,900
Dundee City	4,920	5,380	5,450	6,240	7,030	7,320	8,000	8,000	7,670
East Ayrshire	3,310	3,940	4,110	6,190	6,540	6,540	6,580	6,580	6,800
East Dunbartonshire	5,870	6,530	6,950	6,950	7,610	7,610	6,960	6,960	7,040
East Lothian	1,500	1,750	1,690	1,690	1,660	1,660	1,770	1,770	1,810
East Renfrewshire	5,070	4,560	4,370	4,370	4,420	4,420	4,230	4,230	4,640
Edinburgh, City of	22,350	21,230	21,300	21,300	21,820	21,820	21,840	16,220	16,720
Eilean Siar	1,000	1,000	1,100	1,100	1,220	1,220	1,350	1,350	1,300
Falkirk	3,430	3,250	3,330	3,240	3,330	3,330	3,300	3,300	3,340
Fife	7,680	8,340	7,960	18,670	20,460	22,440	23,680	18,260	17,800
Glasgow City	26,060	25,210	22,960	22,960	21,650	21,650	22,210	23,320	21,450
Highland	4,410	3,860	3,850	4,850	5,690	5,690	5,090	5,090	4,940
Inverclyde	3,000	6,990	6,790	12,350	12,780	12,780	11,940	11,940	12,650
Midlothian	2,810	3,080	3,400	3,310	3,560	3,560	3,460	4,070	4,790
Moray	2,280	1,820	1,870	1,790	1,950	1,950	1,990	1,990	1,990
North Ayrshire	5,220	4,490	4,880	4,880	4,770	4,770	4,850	4,850	4,560
North Lanarkshire	9,580	10,020	12,820	12,820	11,240	11,240	10,760	10,760	11,090
Orkney Islands	1,330	1,400	1,350	1,850	1,650	1,740	1,920	1,920	2,080
Perth & Kinross	4,380	4,860	5,110	5,110	6,320	6,320	6,200	6,200	7,330
Renfrewshire	4,250	4,200	4,200	4,010	4,030	4,030	3,670	3,670	3,450
Scottish Borders	1,780	1,620	1,930	1,920	2,020	2,020	2,050	2,050	2,280
Shetland Islands	1,550	1,590	1,600	1,600	1,760	1,900	2,400	3,220	3,750
South Ayrshire	2,990	3,150	3,220	3,220	3,240	6,580	7,300	7,300	7,070
South Lanarkshire	10,020	10,670	11,580	11,580	12,630	12,630	13,850	13,850	13,720
Stirling	1,840	1,930	1,590	1,590	1,600	1,600	1,840	1,840	2,210
West Dunbartonshire	7,390	7,400	7,360	7,360	7,750	7,750	7,610	7,610	6,980
West Lothian	1,570	1,590	1,870	2,190	2,710	2,710	2,510	2,510	2,410
<b>All Scotland</b>	<b>163,640</b>	<b>172,730</b>	<b>174,030</b>	<b>195,710</b>	<b>203,570</b>	<b>209,800</b>	<b>211,210</b>	<b>203,730</b>	<b>205,400</b>

Source: Audit Scotland SPI data 2006-2008, Scottish Government 2009, 2010 & 2011.

All figures rounded to the nearest ten. Total may not add up to the sum of components due to rounding

<sup>1</sup> - Same methodology used in 2007/08 & 2008/09 making the figures comparable

<sup>2</sup> - Same methodology used in 2008/09 & 2009/10 making the figures comparable

<sup>3</sup> - Same methodology used in 2009/10 & 2010/11 making the figures comparable

<sup>4</sup> - Same methodology used in 2010/11 & 2011/12 making the figures comparable

## Annex 2 – Overnight respite weeks by Local Authority, 2006/07 to 2011/12.

Local Authority	Overnight respite nights provided									Overnight respite weeks provided								
	2006/07	2007/08 <sup>1</sup>	2008/09 <sup>1</sup>	2008/09 <sup>2</sup>	2009/10 <sup>2</sup>	2009/10 <sup>3</sup>	2010/11 <sup>3</sup>	2010/11 <sup>4</sup>	2011/12 <sup>4</sup>	2006/07	2007/08 <sup>1</sup>	2008/09 <sup>1</sup>	2008/09 <sup>2</sup>	2009/10 <sup>2</sup>	2009/10 <sup>3</sup>	2010/11 <sup>3</sup>	2010/11 <sup>4</sup>	2011/12 <sup>4</sup>
Aberdeen City	14,570	15,080	12,910	12,910	11,910	11,910	10,800	10,800	13,620	2,080	2,160	1,850	1,850	1,710	1,710	1,540	1,540	1,950
Aberdeenshire	21,940	20,730	22,200	22,200	21,800	21,800	23,830	25,620	27,980	3,140	2,970	3,180	3,180	3,110	3,110	3,410	3,660	4,000
Angus	8,990	8,310	9,220	11,040	11,390	11,390	9,690	9,690	10,530	1,290	1,180	1,320	1,580	1,620	1,620	1,390	1,390	1,500
Argyll & Bute	6,440	7,640	6,400	6,400	7,640	7,640	5,870	5,870	6,050	920	1,100	910	910	1,100	1,100	840	840	870
Clackmannanshire	6,050	5,420	5,860	5,860	5,750	5,750	5,550	5,550	5,620	860	770	840	840	830	830	790	790	800
Dumfries & Galloway	9,240	9,330	8,550	8,550	8,480	11,440	13,140	13,140	13,810	1,320	1,330	1,230	1,230	1,210	1,640	1,880	1,880	1,970
Dundee City	14,780	14,160	15,140	15,140	16,370	16,370	19,690	19,690	16,220	2,110	2,030	2,160	2,160	2,340	2,340	2,820	2,820	2,310
East Ayrshire	11,300	12,890	12,450	12,450	12,650	12,650	12,620	12,620	13,470	1,620	1,840	1,780	1,780	1,800	1,800	1,800	1,800	1,920
East Dunbartonshire	6,900	7,250	6,710	6,710	7,650	7,650	7,080	7,080	7,560	990	1,040	960	960	1,090	1,090	1,020	1,020	1,080
East Lothian	7,590	8,490	8,830	8,830	8,210	8,210	8,930	8,930	9,080	1,080	1,210	1,260	1,260	1,160	1,160	1,280	1,280	1,300
East Renfrewshire	12,340	10,660	8,410	8,410	8,430	8,430	8,080	8,080	8,840	1,760	1,520	1,200	1,200	1,200	1,200	1,150	1,150	1,250
Edinburgh, City of	33,280	27,510	27,530	27,530	28,760	28,760	29,080	29,080	31,670	4,750	3,940	3,930	3,930	4,110	4,110	4,160	4,160	4,530
Eilean Siar	4,380	4,960	5,630	5,630	5,750	5,750	6,410	6,410	5,150	620	710	810	810	820	820	920	920	730
Falkirk	13,310	12,470	12,910	11,480	11,630	11,630	11,270	11,270	11,610	1,900	1,780	1,840	1,640	1,650	1,650	1,610	1,610	1,650
Fife	27,680	30,280	27,980	27,980	28,750	26,990	29,120	29,120	33,200	3,960	4,330	4,000	4,000	4,110	3,850	4,160	4,160	4,740
Glasgow City	47,760	48,480	45,680	45,680	43,470	43,470	33,430	33,430	29,100	6,820	6,930	6,530	6,530	6,210	6,210	4,780	4,780	4,150
Highland	19,770	15,000	14,900	14,900	19,310	19,310	16,880	16,880	17,660	2,830	2,140	2,140	2,140	2,760	2,760	2,410	2,410	2,520
Inverclyde	5,470	5,930	6,480	6,480	6,800	6,800	6,620	6,620	6,060	780	850	940	940	970	970	950	950	860
Midlothian	8,940	6,400	7,840	7,250	6,320	6,320	5,940	5,940	6,600	1,280	920	1,130	1,050	890	890	860	860	940
Moray	8,530	6,830	6,600	6,600	8,600	8,600	8,680	8,680	8,130	1,210	970	940	940	1,230	1,230	1,230	1,230	1,160
North Ayrshire	15,250	16,470	18,480	18,480	17,280	17,280	16,740	16,740	15,980	2,180	2,350	2,630	2,630	2,460	2,460	2,400	2,400	2,280
North Lanarkshire	20,810	22,300	19,800	19,800	21,070	21,070	20,160	20,160	19,930	2,970	3,180	2,820	2,820	3,010	3,010	2,880	2,880	2,850
Orkney Islands	3,570	3,700	3,410	3,410	3,370	3,370	3,410	3,410	3,650	510	530	490	490	480	480	490	490	520
Perth & Kinross	15,490	17,900	17,390	17,390	15,760	15,760	16,560	16,560	20,450	2,220	2,560	2,480	2,480	2,250	2,250	2,370	2,370	2,920
Renfrewshire	18,330	17,560	18,540	18,540	17,990	17,990	16,550	16,550	16,030	2,610	2,510	2,650	2,650	2,570	2,570	2,360	2,360	2,290
Scottish Borders	9,760	9,100	11,370	11,080	11,520	11,520	10,780	10,780	12,100	1,400	1,290	1,630	1,580	1,650	1,650	1,540	1,540	1,730
Shetland Islands	8,620	8,770	8,160	8,160	9,480	9,480	12,830	12,830	15,150	1,230	1,250	1,170	1,170	1,360	1,360	1,830	1,830	2,170
South Ayrshire	12,850	12,910	13,790	13,790	12,010	12,040	14,420	14,420	15,290	1,840	1,850	1,960	1,960	1,720	1,720	2,060	2,060	2,180
South Lanarkshire	26,380	27,480	31,600	31,600	36,340	36,340	43,920	43,920	42,230	3,760	3,920	4,520	4,520	5,190	5,190	6,270	6,270	6,040
Stirling	9,100	9,350	7,320	7,320	6,170	6,170	7,300	7,300	9,770	1,290	1,340	1,040	1,040	880	880	1,040	1,040	1,400
West Dunbartonshire	7,530	8,160	8,370	8,370	8,300	8,300	7,850	7,850	7,080	1,080	1,170	1,200	1,200	1,190	1,190	1,120	1,120	1,010
West Lothian	8,230	7,760	9,150	9,150	9,860	9,860	9,330	9,330	8,710	1,170	1,100	1,310	1,310	1,410	1,410	1,330	1,330	1,250
<b>All Scotland</b>	<b>445,150</b>	<b>439,280</b>	<b>439,600</b>	<b>439,120</b>	<b>448,780</b>	<b>450,010</b>	<b>452,530</b>	<b>454,320</b>	<b>468,300</b>	<b>63,590</b>	<b>62,750</b>	<b>62,800</b>	<b>62,730</b>	<b>64,110</b>	<b>64,290</b>	<b>64,650</b>	<b>64,900</b>	<b>66,900</b>

Source: Audit Scotland SPI data 2006-2008, Scottish Government 2009, 2010 & 2011.

All figures rounded to the nearest ten. Total may not add up to the sum of components due to rounding

<sup>1</sup> - Same methodology used in 2007/08 & 2008/09 making the figures comparable

<sup>2</sup> - Same methodology used in 2008/09 & 2009/10 making the figures comparable

<sup>3</sup> - Same methodology used in 2009/10 & 2010/11 making the figures comparable

<sup>4</sup> - Same methodology used in 2010/11 & 2011/12 making the figures comparable

### Annex 3 – Daytime respite weeks by Local Authority, 2006/07 to 2011/12.

Local Authority	Daytime respite hours provided									Daytime respite weeks provided								
	2006/07	2007/08 <sup>1</sup>	2008/09 <sup>1</sup>	2008/09 <sup>2</sup>	2009/10 <sup>2</sup>	2009/10 <sup>3</sup>	2010/11 <sup>3</sup>	2010/11 <sup>4</sup>	2011/12 <sup>4</sup>	2006/07	2007/08 <sup>1</sup>	2008/09 <sup>1</sup>	2008/09 <sup>2</sup>	2009/10 <sup>2</sup>	2009/10 <sup>3</sup>	2010/11 <sup>3</sup>	2010/11 <sup>4</sup>	2011/12 <sup>4</sup>
Aberdeen City	111,910	207,480	151,860	126,350	81,490	81,490	81,390	81,390	85,280	2,130	3,950	2,890	2,410	1,550	1,550	1,550	1,550	1,620
Aberdeenshire	93,220	137,370	128,240	148,640	214,560	214,560	173,420	212,670	202,740	1,780	2,620	2,450	2,840	4,080	4,080	3,300	4,050	3,870
Angus	29,820	39,370	41,560	96,200	115,650	114,610	127,100	127,100	148,750	570	750	790	1,830	2,200	2,180	2,420	2,420	2,830
Argyll & Bute	145,830	130,720	142,070	142,070	184,480	184,480	190,020	190,020	157,140	2,780	2,490	2,710	2,710	3,510	3,510	3,620	3,620	3,000
Clackmannanshire	7,730	133,300	129,230	129,230	127,270	127,270	119,350	119,350	115,370	150	2,540	2,460	2,460	2,420	2,420	2,270	2,270	2,210
Dumfries & Galloway	55,030	51,890	40,060	40,060	40,160	40,160	44,880	44,880	48,640	1,040	990	760	760	770	770	860	860	930
Dundee City	147,480	176,030	172,600	214,160	246,280	261,620	272,200	272,200	281,270	2,800	3,350	3,290	4,080	4,690	4,990	5,180	5,180	5,350
East Ayrshire	89,040	110,340	122,400	231,730	248,360	248,360	250,890	250,890	256,120	1,690	2,100	2,330	4,410	4,730	4,730	4,780	4,780	4,880
East Dunbartonshire	256,240	288,480	314,500	314,500	342,080	342,080	312,410	312,410	312,880	4,890	5,500	5,990	5,990	6,520	6,520	5,950	5,950	5,960
East Lothian	22,070	27,950	22,760	22,760	25,830	25,830	25,700	25,700	27,080	430	530	440	440	500	500	490	490	520
East Renfrewshire	173,550	159,660	166,390	166,390	168,960	168,960	161,750	161,750	177,590	3,310	3,040	3,170	3,170	3,220	3,220	3,080	3,080	3,390
Edinburgh, City of	923,820	908,040	911,650	911,650	929,910	929,910	928,390	633,430	640,270	17,590	17,290	17,360	17,360	17,710	17,710	17,690	12,070	12,200
Eilean Siar	19,740	15,510	15,480	15,480	20,990	20,990	22,590	22,590	29,880	380	300	290	290	400	400	430	430	570
Falkirk	80,480	77,310	78,190	83,880	87,730	87,730	88,900	88,900	88,120	1,530	1,470	1,490	1,590	1,670	1,670	1,690	1,690	1,680
Fife	195,820	211,040	208,250	770,280	858,460	975,490	1,024,850	740,330	685,580	3,730	4,030	3,970	14,670	16,360	18,580	19,530	14,100	13,060
Glasgow City	1,009,910	959,860	862,710	862,710	810,710	810,710	915,470	973,480	907,690	19,230	18,290	16,440	16,440	15,440	15,440	17,440	18,540	17,290
Highland	83,530	89,950	90,590	142,640	153,900	153,900	140,830	140,830	126,890	1,590	1,720	1,730	2,720	2,940	2,940	2,680	2,680	2,420
Inverclyde	116,590	322,580	307,820	599,570	619,930	619,930	577,160	577,160	618,760	2,220	6,150	5,860	11,420	11,800	11,800	10,990	10,990	11,790
Midlothian	80,360	113,960	119,810	119,340	139,280	139,280	136,940	169,250	202,210	1,530	2,170	2,280	2,280	2,650	2,650	2,610	3,230	3,850
Moray	55,590	44,590	48,530	44,600	37,800	37,800	39,350	39,350	43,640	1,060	850	930	860	720	720	750	750	830
North Ayrshire	159,540	112,330	117,680	117,680	120,980	120,980	128,820	128,820	119,310	3,040	2,140	2,250	2,250	2,300	2,300	2,460	2,460	2,270
North Lanarkshire	346,800	358,980	524,460	524,460	431,950	431,950	413,540	413,540	432,570	6,610	6,830	9,980	9,980	8,230	8,230	7,880	7,880	8,230
Orkney Islands	43,250	45,740	45,510	71,800	61,610	66,960	75,370	75,370	81,720	830	870	870	1,370	1,170	1,250	1,430	1,430	1,560
Perth & Kinross	113,740	120,850	137,990	137,990	213,560	213,560	201,160	201,160	231,370	2,170	2,300	2,630	2,630	4,070	4,070	3,830	3,830	4,400
Renfrewshire	85,740	89,030	81,600	71,580	76,570	76,570	68,680	68,680	60,750	1,630	1,710	1,560	1,370	1,460	1,460	1,320	1,320	1,160
Scottish Borders	20,030	16,880	16,220	17,550	19,880	19,880	27,010	27,010	28,780	380	320	310	330	380	380	520	520	550
Shetland Islands	16,510	17,720	22,820	22,820	21,360	28,650	29,620	72,910	83,010	320	340	440	440	400	540	560	1,390	1,580
South Ayrshire	60,750	68,600	65,620	65,620	80,170	254,920	275,060	275,060	256,760	1,160	1,300	1,260	1,260	1,530	4,860	5,240	5,240	4,890
South Lanarkshire	328,080	354,340	371,110	371,110	390,770	390,770	397,630	397,630	403,790	6,250	6,750	7,070	7,070	7,440	7,440	7,580	7,580	7,680
Stirling	28,180	31,100	28,750	28,750	37,520	37,520	42,060	42,060	42,740	540	590	550	550	710	710	800	800	820
West Dunbartonshire	331,570	327,540	323,660	323,660	344,670	344,670	340,660	340,660	313,270	6,320	6,240	6,160	6,160	6,570	6,570	6,490	6,490	5,970
West Lothian	20,780	25,370	29,420	46,580	68,580	68,580	61,560	61,560	61,290	400	480	560	890	1,310	1,310	1,160	1,160	1,170
<b>All Scotland</b>	<b>5,252,730</b>	<b>5,773,900</b>	<b>5,839,510</b>	<b>6,981,580</b>	<b>7,321,480</b>	<b>7,639,200</b>	<b>7,694,790</b>	<b>7,288,160</b>	<b>7,271,260</b>	<b>100,050</b>	<b>109,980</b>	<b>111,230</b>	<b>132,980</b>	<b>139,460</b>	<b>145,510</b>	<b>146,570</b>	<b>138,820</b>	<b>138,500</b>

Source: Audit Scotland SPI data 2006-2008, Scottish Government 2009, 2010 & 2011.

All figures rounded to the nearest ten. Total may not add up to the sum of components due to rounding

<sup>1</sup> - Same methodology used in 2007/08 & 2008/09 making the figures comparable

<sup>2</sup> - Same methodology used in 2008/09 & 2009/10 making the figures comparable

<sup>3</sup> - Same methodology used in 2009/10 & 2010/11 making the figures comparable

<sup>4</sup> - Same methodology used in 2010/11 & 2011/12 making the figures comparable

## Annex 4 – Respite weeks by Local Authority provided to Older People (Aged 65+), 2006/07 to 2011/12.

Local Authority	Total respite weeks provided									Overnight respite weeks provided									Daytime respite weeks provided								
	2006/07	2007/08 <sup>1</sup>	2008/09 <sup>1</sup>	2008/09 <sup>2</sup>	2009/10 <sup>2</sup>	2009/10 <sup>3</sup>	2010/11 <sup>3</sup>	2010/11 <sup>4</sup>	2011/12 <sup>4</sup>	2006/07	2007/08 <sup>1</sup>	2008/09 <sup>1</sup>	2008/09 <sup>2</sup>	2009/10 <sup>2</sup>	2009/10 <sup>3</sup>	2010/11 <sup>3</sup>	2010/11 <sup>4</sup>	2011/12 <sup>4</sup>	2006/07	2007/08 <sup>1</sup>	2008/09 <sup>1</sup>	2008/09 <sup>2</sup>	2009/10 <sup>2</sup>	2009/10 <sup>3</sup>	2010/11 <sup>3</sup>	2010/11 <sup>4</sup>	2011/12 <sup>4</sup>
Aberdeen City	1,720	2,320	1,870	1,870	1,880	1,880	2,260	2,260	2,420	1,580	1,510	1,250	1,250	1,180	1,180	1,090	1,090	1,270	140	810	630	630	700	700	1,170	1,170	1,150
Aberdeenshire	2,950	3,190	3,270	3,460	3,650	3,650	3,860	3,860	3,710	1,980	2,220	2,400	2,400	2,310	2,310	2,680	2,670	2,870	970	980	870	1,070	1,330	1,330	1,170	990	850
Angus	1,320	1,320	1,430	2,870	3,150	3,150	3,260	3,260	3,730	990	830	950	1,220	1,210	1,210	1,090	1,090	1,170	330	490	480	1,640	1,940	1,940	2,170	2,170	2,550
Argyll & Bute	1,920	1,900	2,090	2,090	2,150	2,150	1,790	1,790	1,600	660	650	490	490	670	670	510	510	590	1,260	1,250	1,600	1,600	1,480	1,480	1,280	1,280	1,010
Clackmannanshire	640	1,870	1,830	1,830	1,760	1,760	1,660	1,660	1,610	640	480	510	510	490	490	460	460	470	NR	1,390	1,320	1,320	1,270	1,270	1,200	1,200	1,140
Dumfries & Galloway	1,020	1,050	890	890	850	910	840	840	880	720	810	680	680	660	720	590	590	610	290	240	210	210	190	190	250	250	270
Dundee City	2,060	2,090	2,200	2,200	2,310	2,310	2,760	2,760	2,590	1,180	1,120	1,150	1,150	1,160	1,160	1,630	1,630	1,240	880	970	1,040	1,040	1,160	1,160	1,130	1,130	1,340
East Ayrshire	2,140	2,360	2,540	2,540	2,530	2,530	2,550	2,550	2,640	920	870	890	890	930	930	930	930	1,050	1,220	1,500	1,650	1,650	1,600	1,600	1,620	1,620	1,590
East Dunbartonshire	4,270	4,970	5,350	5,350	5,930	5,930	5,220	5,220	5,240	570	590	470	470	590	590	560	560	610	3,700	4,390	4,880	4,880	5,350	5,350	4,660	4,660	4,630
East Lothian	620	720	800	800	710	710	830	830	810	530	640	720	720	620	620	740	740	720	90	70	80	80	90	90	90	90	90
East Renfrewshire	3,770	3,660	3,260	3,260	3,060	3,060	2,890	2,890	3,060	990	1,130	720	720	620	620	620	620	680	2,780	2,530	2,540	2,540	2,440	2,440	2,270	2,270	2,380
Edinburgh, City of	10,220	9,180	9,920	9,920	9,720	9,720	10,880	8,140	8,420	1,680	1,530	1,450	1,450	1,510	1,510	1,800	1,800	1,840	8,540	7,650	8,460	8,460	8,210	8,210	9,080	6,350	6,590
Eilean Siar	840	820	890	890	980	980	1,150	1,150	1,110	520	590	670	670	710	710	800	800	640	330	220	220	220	270	270	360	360	470
Falkirk	1,970	1,860	1,830	1,680	1,680	1,680	1,720	1,720	1,720	1,110	1,040	1,000	850	820	820	860	860	830	860	830	830	830	850	850	860	860	890
Fife	5,420	5,730	5,450	8,960	8,530	9,650	10,470	6,880	6,990	2,430	2,640	2,460	2,460	2,280	2,270	2,530	2,530	2,660	3,000	3,100	3,000	6,500	6,250	7,380	7,940	4,350	4,330
Glasgow City	9,330	8,590	8,390	8,390	8,980	8,980	7,750	7,750	5,740	3,740	3,600	3,490	3,490	2,960	2,960	1,930	1,930	1,590	5,580	5,000	4,910	4,910	6,010	6,010	5,830	5,830	4,150
Highland	2,120	1,440	1,570	2,560	3,100	3,100	2,930	2,930	2,740	1,580	910	990	990	1,490	1,490	1,430	1,430	1,440	540	530	590	1,580	1,610	1,610	1,500	1,500	1,300
Inverclyde	2,200	3,420	4,140	9,300	9,580	9,580	8,870	8,870	9,510	360	420	470	470	490	490	490	490	410	1,840	3,000	3,670	8,840	9,080	9,080	8,380	8,380	9,090
Midlothian	1,080	1,010	1,090	1,090	1,080	1,080	1,050	1,050	1,380	590	510	560	560	370	370	390	390	480	490	500	530	530	700	700	660	660	900
Moray	790	840	950	870	930	930	960	960	960	510	400	410	410	590	590	640	640	590	280	430	540	470	340	340	320	320	370
North Ayrshire	2,970	3,160	3,430	3,430	3,210	3,210	3,240	3,240	3,060	1,400	1,500	1,730	1,730	1,480	1,480	1,420	1,420	1,300	1,580	1,660	1,700	1,700	1,730	1,730	1,830	1,830	1,750
North Lanarkshire	4,420	6,240	6,850	6,850	5,590	5,590	5,300	5,300	5,340	1,430	1,590	1,330	1,330	1,580	1,580	1,520	1,520	1,600	2,990	4,650	5,510	5,510	4,020	4,020	3,780	3,780	3,740
Orkney Islands	570	630	640	870	700	700	710	710	720	330	350	320	320	310	310	310	310	310	240	290	320	550	390	390	400	400	410
Perth & Kinross	3,410	3,700	3,880	3,880	4,910	4,910	4,900	4,900	5,970	1,700	1,970	1,840	1,840	1,720	1,720	2,030	2,030	2,700	1,710	1,730	2,040	2,040	3,190	3,190	2,880	2,880	3,260
Renfrewshire	1,560	1,470	1,390	1,390	1,230	1,230	1,400	1,400	1,380	1,280	1,150	1,170	1,170	1,030	1,030	1,030	1,030	1,030	280	320	220	220	200	200	370	370	350
Scottish Borders	760	840	1,010	850	810	810	960	960	1,160	720	810	990	820	800	800	910	910	1,100	40	20	20	20	20	20	50	50	70
Shetland Islands	1,010	1,090	890	890	1,080	1,080	1,480	1,720	2,040	900	950	740	740	940	940	1,380	1,380	1,640	110	140	150	150	140	140	100	340	400
South Ayrshire	1,630	1,710	1,750	1,750	1,570	3,200	3,480	3,480	3,630	1,370	1,400	1,430	1,430	1,240	1,240	1,530	1,530	1,650	260	310	320	320	330	1,960	1,940	1,940	1,980
South Lanarkshire	7,730	7,570	8,110	8,110	8,620	8,620	9,160	9,160	9,480	2,700	2,530	2,980	2,980	3,290	3,290	3,910	3,910	3,980	5,020	5,040	5,130	5,130	5,330	5,330	5,250	5,250	5,500
Stirling	1,120	1,160	760	760	750	750	930	930	1,240	970	1,030	620	620	580	580	750	750	1,040	150	130	140	140	170	170	180	180	210
West Dunbartonshire	3,010	3,160	3,490	3,490	3,810	3,810	3,420	3,420	3,560	620	620	560	560	450	450	430	430	430	2,390	2,540	2,930	2,930	3,370	3,370	2,990	2,990	3,130
West Lothian	690	670	780	780	840	840	860	860	930	560	490	610	610	650	650	640	640	560	120	170	170	170	190	190	220	220	370
<b>All Scotland</b>	<b>85,270</b>	<b>89,730</b>	<b>92,740</b>	<b>103,870</b>	<b>105,700</b>	<b>108,510</b>	<b>109,530</b>	<b>103,250</b>	<b>105,390</b>	<b>37,250</b>	<b>36,870</b>	<b>36,040</b>	<b>35,990</b>	<b>35,740</b>	<b>35,790</b>	<b>37,620</b>	<b>37,610</b>	<b>39,120</b>	<b>48,020</b>	<b>52,860</b>	<b>56,700</b>	<b>67,880</b>	<b>69,960</b>	<b>72,720</b>	<b>71,910</b>	<b>65,640</b>	<b>66,270</b>

Source: Audit Scotland SPI data 2006-2008, Scottish Government 2009, 2010 & 2011.

All figures rounded to the nearest ten. Total may not add up to the sum of components due to rounding

<sup>1</sup> - Same methodology used in 2007/08 & 2008/09 making the figures comparable

<sup>2</sup> - Same methodology used in 2008/09 & 2009/10 making the figures comparable

<sup>3</sup> - Same methodology used in 2009/10 & 2010/11 making the figures comparable

<sup>4</sup> - Same methodology used in 2010/11 & 2011/12 making the figures comparable

## Annex 5 – Respite weeks by Local Authority provided to Adults (Aged 18 to 64), 2006/07 to 2011/12

Local Authority	Total respite weeks provided									Overnight respite weeks provided								Daytime respite weeks provided									
	2006/07	2007/08 <sup>1</sup>	2008/09 <sup>1</sup>	2008/09 <sup>2</sup>	2009/10 <sup>2</sup>	2009/10 <sup>3</sup>	2010/11 <sup>3</sup>	2010/11 <sup>4</sup>	2011/12 <sup>4</sup>	2006/07	2007/08 <sup>1</sup>	2008/09 <sup>1</sup>	2008/09 <sup>2</sup>	2009/10 <sup>2</sup>	2009/10 <sup>3</sup>	2010/11 <sup>3</sup>	2010/11 <sup>4</sup>	2011/12 <sup>4</sup>	2006/07	2007/08 <sup>1</sup>	2008/09 <sup>1</sup>	2008/09 <sup>2</sup>	2009/10 <sup>2</sup>	2009/10 <sup>3</sup>	2010/11 <sup>3</sup>	2010/11 <sup>4</sup>	2011/12 <sup>4</sup>
Aberdeen City	1,270	2,470	2,080	2,080	1,020	1,020	450	450	700	340	450	430	430	350	350	250	250	470	930	2,020	1,650	1,650	670	670	200	200	230
Aberdeenshire	1,360	930	950	1,140	1,960	1,960	1,520	2,840	2,810	1,000	590	650	650	660	660	590	880	1,000	360	350	300	490	1,290	1,290	940	1,960	1,810
Angus	360	410	460	330	370	350	250	250	270	210	230	250	240	270	270	170	170	220	150	180	210	90	100	80	80	50	
Argyll & Bute	1,050	920	770	770	1,580	1,580	1,650	1,650	1,330	100	270	170	170	210	210	140	140	130	950	650	600	600	1,380	1,380	1,510	1,510	1,210
Clackmannanshire	170	1,200	1,220	1,220	1,260	1,260	1,250	1,250	1,210	170	210	280	280	300	300	280	280	280	NR	990	940	940	960	960	970	970	940
Dumfries & Galloway	380	390	350	350	340	710	1,080	1,080	1,180	140	310	280	280	270	640	970	970	1,050	240	80	80	80	80	80	110	110	130
Dundee City	2,230	2,530	2,560	3,350	3,990	4,280	4,500	4,500	4,370	600	630	760	760	920	920	930	930	850	1,620	1,900	1,800	2,590	3,060	3,360	3,570	3,570	3,520
East Ayrshire	910	1,380	1,280	3,360	3,660	3,660	3,670	3,670	3,760	490	810	700	700	700	700	690	690	680	420	560	580	2,660	2,960	2,960	2,980	2,980	3,070
East Dunbartonshire	1,110	1,080	1,090	1,090	1,070	1,070	1,160	1,160	1,090	300	330	360	360	350	350	330	330	330	820	750	730	730	710	710	830	830	760
East Lothian	430	460	440	440	410	410	400	400	460	410	450	420	420	390	390	390	390	450	20	20	20	20	20	10	10	20	
East Renfrewshire	620	460	570	570	820	820	830	830	910	500	290	310	310	400	400	380	380	420	120	160	260	260	420	420	450	450	490
Edinburgh, City of	7,810	8,230	7,980	7,980	9,190	9,190	7,990	5,890	5,640	1,530	1,500	1,520	1,520	1,640	1,640	1,520	1,520	1,720	6,280	6,730	6,460	6,460	7,540	7,540	6,470	4,370	3,930
Eilean Siar	80	120	140	140	170	170	130	130	100	70	100	120	120	90	90	100	100	70	10	30	20	20	80	80	20	20	30
Falkirk	860	820	810	760	790	790	780	780	860	600	590	590	540	550	550	540	540	600	260	230	220	220	240	240	240	240	260
Fife	1,640	1,930	1,560	8,360	10,740	11,430	11,840	10,310	9,940	1,240	1,430	1,130	1,130	1,510	1,260	1,320	1,320	1,790	410	500	430	7,240	9,240	10,170	10,530	8,990	8,140
Glasgow City	14,490	14,150	12,790	12,790	10,410	10,410	12,650	13,750	13,910	1,900	1,930	2,030	2,030	2,070	2,070	1,900	1,900	1,510	12,590	12,220	10,760	10,760	8,340	8,340	10,750	11,850	12,390
Highland	1,160	1,370	1,300	1,300	1,460	1,460	1,200	1,200	1,190	710	740	680	680	760	760	540	540	600	450	630	620	620	710	710	650	650	590
Inverclyde	520	3,290	2,410	2,800	3,000	3,000	2,920	2,920	2,980	280	300	350	350	370	370	370	370	340	230	2,990	2,060	2,450	2,620	2,620	2,550	2,550	2,640
Midlothian	1,230	1,660	1,840	1,840	1,990	1,990	1,900	2,510	2,890	330	300	430	430	460	460	400	400	390	890	1,360	1,420	1,420	1,520	1,520	1,500	2,120	2,500
Moray	1,190	680	620	620	710	710	730	730	730	550	430	400	400	450	450	450	450	440	640	260	220	220	260	260	280	280	300
North Ayrshire	1,830	830	960	960	1,110	1,110	1,040	1,040	1,050	570	560	670	670	760	760	740	740	740	1,260	270	290	290	350	350	310	310	310
North Lanarkshire	4,550	3,210	5,490	5,490	5,120	5,120	4,760	4,760	4,830	1,200	1,250	1,190	1,190	1,160	1,160	1,130	1,130	1,030	3,350	1,960	4,290	4,290	3,950	3,950	3,640	3,640	3,800
Orkney Islands	650	650	590	800	740	830	970	970	1,150	110	110	90	90	90	90	100	100	110	540	540	500	720	650	730	870	870	1,040
Perth & Kinross	610	780	890	890	1,060	1,060	930	930	990	440	500	560	560	450	450	260	260	140	180	280	330	330	610	610	670	670	850
Renfrewshire	1,660	1,730	1,670	1,670	1,880	1,880	1,490	1,490	1,350	960	960	1,080	1,080	1,100	1,100	960	960	890	700	780	600	600	780	780	530	530	460
Scottish Borders	640	430	560	560	670	670	550	550	550	530	310	440	440	530	530	330	330	310	110	120	120	120	140	140	220	220	240
Shetland Islands	300	240	340	340	310	360	390	980	1,080	250	210	290	290	270	270	280	280	290	50	30	60	60	40	90	110	700	790
South Ayrshire	660	560	570	570	550	2,250	2,640	2,640	2,650	310	240	320	320	320	320	340	340	330	350	310	250	250	240	1,940	2,300	2,300	2,310
South Lanarkshire	1,640	1,890	2,150	2,150	2,540	2,540	3,140	3,140	3,020	870	990	1,090	1,090	1,380	1,380	1,890	1,890	1,650	770	900	1,070	1,070	1,160	1,160	1,250	1,250	1,370
Stirling	180	190	210	210	220	220	230	230	350	150	160	170	170	180	180	180	180	270	20	30	30	30	40	40	50	50	80
West Dunbartonshire	3,660	3,510	3,160	3,160	3,250	3,250	3,440	3,440	2,700	320	380	450	450	570	570	540	540	440	3,340	3,140	2,710	2,710	2,680	2,680	2,910	2,910	2,250
West Lothian	530	530	650	980	1,380	1,380	1,150	1,150	1,000	470	470	570	570	630	630	560	560	570	60	60	80	410	760	760	590	590	440
<b>All Scotland</b>	<b>55,770</b>	<b>59,050</b>	<b>58,460</b>	<b>69,070</b>	<b>73,790</b>	<b>76,950</b>	<b>77,640</b>	<b>77,640</b>	<b>77,040</b>	<b>17,650</b>	<b>18,030</b>	<b>18,760</b>	<b>18,690</b>	<b>20,180</b>	<b>20,300</b>	<b>19,550</b>	<b>19,850</b>	<b>20,120</b>	<b>38,120</b>	<b>41,020</b>	<b>39,700</b>	<b>50,380</b>	<b>53,620</b>	<b>56,650</b>	<b>58,090</b>	<b>57,790</b>	<b>56,920</b>

Source: Audit Scotland SPI data 2006-2008, Scottish Government 2009, 2010 & 2011.

All figures rounded to the nearest ten. Total may not add up to the sum of components due to rounding

<sup>1</sup> - Same methodology used in 2007/08 & 2008/09 making the figures comparable

<sup>2</sup> - Same methodology used in 2008/09 & 2009/10 making the figures comparable

<sup>3</sup> - Same methodology used in 2009/10 & 2010/11 making the figures comparable

<sup>4</sup> - Same methodology used in 2010/11 & 2011/12 making the figures comparable

## Annex 6 – Respite weeks by Local Authority provided to Young People (Aged 0 to 17), 2006/07 to 2011/12.

Local Authority	Total respite weeks provided									Overnight respite weeks provided									Daytime respite weeks provided								
	2006/07	2007/08 <sup>1</sup>	2008/09 <sup>1</sup>	2008/09 <sup>2</sup>	2009/10 <sup>2</sup>	2009/10 <sup>3</sup>	2010/11 <sup>3</sup>	2010/11 <sup>4</sup>	2011/12 <sup>4</sup>	2006/07	2007/08 <sup>1</sup>	2008/09 <sup>1</sup>	2008/09 <sup>2</sup>	2009/10 <sup>2</sup>	2009/10 <sup>3</sup>	2010/11 <sup>3</sup>	2010/11 <sup>4</sup>	2011/12 <sup>4</sup>	2006/07	2007/08 <sup>1</sup>	2008/09 <sup>1</sup>	2008/09 <sup>2</sup>	2009/10 <sup>2</sup>	2009/10 <sup>3</sup>	2010/11 <sup>3</sup>	2010/11 <sup>4</sup>	2011/12 <sup>4</sup>
Aberdeen City	1,230	1,320	780	300	360	360	380	380	450	160	200	170	170	180	180	200	200	210	1,060	1,120	610	130	180	180	180	180	240
Aberdeenshire	610	1,450	1,400	1,400	1,600	1,600	1,330	1,210	1,340	160	160	130	130	140	140	140	110	130	450	1,290	1,280	1,280	1,460	1,460	1,190	1,100	1,210
Angus	170	200	210	210	300	300	300	300	340	90	120	120	120	140	140	130	130	110	90	80	100	100	160	160	170	170	230
Argyll & Bute	730	770	760	760	870	870	1,020	1,020	920	160	180	250	250	220	220	190	190	150	570	590	510	510	650	650	830	830	780
Clackmannanshire	200	240	250	250	230	230	160	160	180	50	80	50	50	40	40	50	50	50	150	160	200	200	190	190	100	100	130
Dumfries & Galloway	970	880	740	740	780	780	810	810	840	460	210	270	270	280	280	320	320	310	510	670	470	470	500	500	500	500	530
Dundee City	630	760	700	700	730	730	740	740	720	330	280	250	250	260	260	260	260	220	300	480	450	450	470	470	480	480	490
East Ayrshire	260	200	290	290	340	340	360	360	410	210	160	190	190	170	170	180	180	190	50	40	100	100	170	170	180	180	220
East Dunbartonshire	490	470	510	510	610	610	590	590	710	120	120	130	130	150	150	130	130	140	370	360	380	380	460	460	460	460	570
East Lothian	460	570	460	460	540	540	530	530	540	140	120	120	120	150	150	150	150	130	320	440	340	340	390	390	390	390	410
East Renfrewshire	680	450	540	540	540	540	510	510	670	270	100	170	170	180	180	150	150	150	410	350	370	370	360	360	360	360	520
Edinburgh, City of	4,320	3,820	3,400	3,400	2,920	2,920	2,980	2,180	2,650	1,540	910	960	960	960	960	840	840	970	2,770	2,910	2,440	2,440	1,960	1,960	2,140	1,350	1,680
Eilean Siar	70	70	70	70	70	70	70	70	90	30	20	20	20	20	20	20	20	20	40	50	50	50	50	50	50	50	70
Falkirk	600	570	690	800	860	860	800	800	760	190	150	250	250	280	280	210	210	220	410	410	440	540	580	580	590	590	530
Fife	620	680	950	1,340	1,190	1,350	1,370	1,070	880	290	260	410	410	320	320	310	310	290	320	430	540	930	870	1,030	1,060	760	590
Glasgow City	2,240	2,470	1,780	1,780	2,270	2,270	1,810	1,810	1,800	1,180	1,400	1,010	1,010	1,180	1,180	950	950	1,050	1,060	1,070	770	770	1,090	1,090	860	860	750
Highland	1,130	1,050	990	990	1,130	1,130	970	970	1,010	540	490	470	470	510	510	440	440	480	600	560	520	520	620	620	530	530	530
Inverclyde	290	280	250	250	210	210	150	150	160	140	130	120	120	110	110	90	90	110	150	160	130	130	100	100	60	60	60
Midlothian	500	420	470	380	490	490	510	510	520	360	110	140	60	60	60	70	70	70	150	310	330	330	430	430	450	450	450
Moray	290	300	300	300	310	310	300	300	300	150	140	130	130	190	190	140	140	130	140	160	170	170	120	120	150	150	160
North Ayrshire	420	500	490	490	450	450	560	560	450	210	290	230	230	220	220	240	240	240	200	210	260	260	220	220	320	320	210
North Lanarkshire	610	570	480	480	530	530	690	690	910	340	340	300	300	270	270	230	230	220	270	220	180	180	260	260	460	460	690
Orkney Islands	120	110	120	180	210	210	230	230	210	70	70	80	80	80	80	80	80	100	50	40	50	100	130	130	160	160	110
Perth & Kinross	350	380	340	340	350	350	360	360	380	80	90	80	80	80	80	80	80	80	280	290	260	260	270	270	280	280	290
Renfrewshire	1,020	1,000	1,140	950	920	920	790	790	710	370	400	400	400	440	440	370	370	370	650	610	740	550	480	480	420	420	350
Scottish Borders	380	350	360	510	540	540	550	550	560	150	170	200	320	320	320	300	300	320	230	180	170	190	220	220	250	250	240
Shetland Islands	240	260	370	370	370	460	520	520	630	80	90	140	140	150	150	170	170	240	160	170	230	230	220	310	350	350	390
South Ayrshire	710	890	900	900	1,120	1,120	1,180	1,180	800	160	210	210	210	160	160	190	190	200	550	680	690	690	960	960	1,000	1,000	600
South Lanarkshire	650	1,210	1,320	1,320	1,470	1,470	1,550	1,550	1,220	190	400	450	450	520	520	470	470	410	460	810	870	870	950	950	1,080	1,080	810
Stirling	540	580	630	630	620	620	680	680	620	170	150	250	250	120	120	110	110	90	370	430	380	380	500	500	570	570	530
West Dunbartonshire	720	730	710	710	690	690	750	750	730	140	170	190	190	170	170	150	150	140	590	560	520	520	520	520	590	590	590
West Lothian	360	390	440	440	490	490	490	490	480	140	140	130	130	130	130	130	130	120	220	250	310	310	360	360	350	350	360
<b>All Scotland</b>	<b>22,610</b>	<b>23,950</b>	<b>22,830</b>	<b>22,770</b>	<b>24,080</b>	<b>24,340</b>	<b>24,040</b>	<b>22,830</b>	<b>22,970</b>	<b>8,690</b>	<b>7,850</b>	<b>8,000</b>	<b>8,050</b>	<b>8,200</b>	<b>8,200</b>	<b>7,470</b>	<b>7,450</b>	<b>7,670</b>	<b>13,920</b>	<b>16,100</b>	<b>14,830</b>	<b>14,720</b>	<b>15,880</b>	<b>16,140</b>	<b>16,570</b>	<b>15,390</b>	<b>15,300</b>

Source: Audit Scotland SPI data 2006-2008, Scottish Government 2009, 2010 & 2011.

All figures rounded to the nearest ten. Total may not add up to the sum of components due to rounding

<sup>1</sup> - Same methodology used in 2007/08 & 2008/09 making the figures comparable

<sup>2</sup> - Same methodology used in 2008/09 & 2009/10 making the figures comparable

<sup>3</sup> - Same methodology used in 2009/10 & 2010/11 making the figures comparable

<sup>4</sup> - Same methodology used in 2010/11 & 2011/12 making the figures comparable



## Annex 7: Audit Scotland guidance on Respite Services SPI

### ASW 5: Provision of respite services:

- a) Total overnight respite nights provided
- b) % overnight respite nights not in a care home
- c) Total hours daytime respite provided
- d) % daytime respite hours provided not in a day care centre

### Definitions

**Respite care** is a service intended to benefit a carer and the person he or she cares for by providing a short break from caring tasks. The break is made possible through alternative care arrangements. Breaks provided to people without carers are excluded from this performance indicator, which is intended to measure a key element in support for carers. This indicator only concerns respite care provided or purchased by the Council, or by voluntary organisations funded for this purpose by the Council.

**A carer** is an adult, young person or child who provides a substantial amount of unpaid care on a regular basis for a partner, parent or child, other relative, friend or neighbour who is unable to manage at home without help because of physical or mental ill health, age or disability. Carers may or may not be living with the person for whom they are caring. Exclude people providing such care as a volunteer working for a voluntary organisation or on any contractual basis. "Substantial and regular care" is not defined in carers' legislation and should be interpreted in terms of the impact of the caring role on the individual carer and their family (Scottish Executive Circular CCD 2/2003).

**A person cared for** is an adult with community care needs, with a carer. Older people (65+) include people with or without dementia, aged 65 and over. Age should be calculated as at 31st March. Other adults (18-64) includes people with learning disabilities, physical disabilities, mental health problems, dementia, HIV/AIDS, drug/ alcohol abuse problems, etc., aged 18 to 64 inclusive.

**Respite care** breaks may last a few hours or a few weeks and may or may not be repeated at regular intervals. The duration of the service episode must allow the carer a break from caring tasks; for this reason a minimum duration of one hour is required for the service episode to count as respite for the purposes of this performance indicator (normally, the duration of the respite episode will be longer).

The carer may use the break for any non-caring activity he or she chooses. Services that provide additional care alongside the care provided by the carer (to the same or another cared-for person) provide assistance but do not provide a respite break.

There is no maximum duration for the respite break episode. Councils should exercise caution in relation to people who are recorded in information systems as having very long respite episodes; it may be that the care episode was originally provided for respite but is now being provided as long-term care.

The following kinds of respite care should be included:

- all respite care where this is part of a care plan or arranged on an emergency basis
- all respite care, whether it has been provided directly by the council, or secured by the council from another source such as a voluntary or private sector organisation



- any respite care, even if this subsequently becomes longer term or permanent care. (N.B. The original provision needs to have been on a respite basis, and it is only this period which should be reported).

The **types of respite care** relevant for the purposes of reporting in relation to this indicator are:

Row type (Measure)	Setting	Service type		Definition
<b>Overnight</b> (nights)	At home	(1)	Overnight sitter services at home	Support provided in cared-for person's normal residence that enables the carer to be absent, if they wish.
	Away from home	(2)	In a care home	Accommodated away from home in a registered care home. Excludes respite care in hospital in-patient beds or in supported accommodation.
		(3)	In other accommodation with support	Accommodated away from home in accommodation with support.
		(4)	In another's home	Overnight respite care with another family or individual. Holiday breaks* involving overnight stays (unless in care homes or supported accommodation).
<b>Daytime</b> (hours)	At home	(5)	In cared-for person's normal residence	All respite services provided in the home of the cared for person, except overnight. Includes home care and daytime sitter services.
	Away from home	(6)	In a day centre	Day centre attendance (only counted when the provision of a respite care break to the carer is an <i>explicit</i> reason for day centre attendance recorded in the care plan of the carer or the cared-for person).
		(7)	Day activities not in a day centre	Day services and activities outside the home providing respite for the carer and not based in a day centre.
		(8)	Other day respite	Respite care in another family's home in daytime; Holiday breaks* without overnight stay.

**Note:** \*Holiday breaks include opportunities for the carer and cared-for person being supported to go away together, as well as breaks for either carer(s) or cared-for person(s) to go on holiday separately.

In **row (a)** Councils should report the total number of **nights** (for service types 1 to 4 in the table above), and in **row (c)** the total number of respite care **hours** (for service types 5 to 8), received during the reporting year, as rates per 1,000 population, adding up all respite episodes in the year, whether or not the respite care episode started in the previous reporting year or has yet to be completed.

In **row (b)** count the percentage of respite nights in service types 1, 3 and 4. In **row (d)** count the percentage of respite hours in service types 5, 7 and 8.

**Respite is a reason for providing a service**, and often is not a distinctive type of service. Short duration services provided for the cared-for person, for example emergency admission to hospital, or a programme of rehabilitation, provide the carer with a short break in the normal routine of caring as a by-product of the service provided to the cared-for person. Rehabilitation services and skills training for adults with community care needs are of great benefit to their carers in helping to promote independence. However, none of these services are respite care breaks intended to support carers and are excluded from this performance indicator definition.

Day centre services provided on a regular basis to the cared-for person also provide carers with breaks from care tasks. However, they should only be included in this performance indicator if the

provision of a respite care break to the carer is an explicit reason for this service recorded in the care plan of the carer or the cared-for person.

Befriending and sitter services should not be included unless they enable the carer to take a break of at least one hour from caring tasks.

Some care homes (and supported accommodation) have beds specifically designated for respite use: exclude any long-stay residents who have been admitted to such beds. Some residents may be admitted for respite which subsequently becomes long-stay. Count the period from admission up to the point when the reason for their continued residency has changed.

Where the short break involves the carer and person cared for remaining together, for example holidays together, the respite hours or bed-nights should be counted for one person receiving the short break, rather than for two.

The contextual information required is the number of respite nights and hours for each of the eight service types defined above. No information is required on the numbers of recipients.

## **Sources**

Council assessment and care management records and information systems.

Records and information systems used by voluntary organisations providing respite care under Council contract or SLA.

Population data should be based on the mid-year estimates for the year, published by the Registrar General.

## **Interpretation**

The indicator will be affected primarily by the pattern of need and services required, and by the availability of respite care.

## **EC 8: Provision of respite services**

- a) total overnight respite nights provided
- b) % overnight respite nights not in a care home
- c) total hours daytime respite provided
- d) % daytime respite hours provided not in a day care centre

## **Definitions**

**Respite care** is a service intended to benefit a carer and a child or young person with disabilities he or she cares for by providing a short break from caring tasks. The break is made possible through alternative care arrangements. The indicator is intended to measure a key element in support for carers and only concerns respite care provided or purchased by the Council, or by voluntary organisations funded for this purpose by the Council.

A **carer** is an adult, young person or child who provides a substantial amount of unpaid care on a regular basis for a child with disabilities. Exclude people providing such care as a volunteer working for a voluntary organisation or on any contractual basis. "Substantial and regular care" is not defined

in carers' legislation and should be interpreted in terms of the impact of the caring role on the individual carer and their family (Scottish Executive Circular CCD 2/2003).

**Children with a disability** are children and young people aged 0-17 (as at 31st March) with care requirements arising from learning disabilities, physical disabilities or mental health problems. Children with emotional difficulties should be included only where their difficulties are severe. Do not include breaks provided for children without any disability but who are affected by another's disability, eg a family member.

**Respite care breaks** may last a few hours or a few weeks and may or may not be repeated at regular intervals. The duration of the service episode must allow the carer a break from caring tasks; for this reason a minimum duration of one hour is required for the service episode to count as respite for the purposes of this performance indicator (normally, the duration of the respite episode will be longer). The carer may use the break for any noncaring activity he or she chooses. Services that provide additional care alongside the care provided by the carer provide *assistance* but do not provide a respite break.

There is no maximum duration for the respite break episode. Councils should exercise caution in relation to people who are recorded in information systems as having very long respite episodes; it may be that the care episode was originally provided for respite but is now being provided as long-term care. Councils are required to have regard to the actions required under the *Arrangements to Look After Children (Scotland) Regulations 1996* when overnight respite care away from home involves episodes longer than 4 weeks, or more than 120 days in one year.

The following kinds of respite care should be included:

- all respite care where this is part of a care plan or arranged on an emergency basis
- all respite care, whether it has been provided directly by the council, or secured by the council from another source such as a voluntary or private sector organisation
- any respite care, even if this subsequently becomes longer term or permanent care. (N.B. The original provision needs to have been on a respite basis, and it is only this period which should be reported).

The **types of respite care** relevant for the purposes of reporting in relation to this indicator are:

Row type (Measure)	Setting	Service type		Definition
<b>Overnight</b> (nights)	At home	(1)	Overnight sitter services at home	Support provided overnight in the child's normal residence that enables the carer to be absent, if they wish.
	Away from home	(2)	In a care home/residential school	Accommodated away from home in a registered care home or residential school. Excludes respite care in hospital in-patient beds or in supported accommodation.
		(3)	In other accommodation with support	Accommodated away from home in accommodation with support
		(4)	In another's home	Overnight respite care with another family or individual. Holiday breaks* involving overnight stays (unless in care homes or supported accommodated).
<b>Daytime</b> (hours)	At home	(5)	In child's normal residence	All respite services provided in child/young person's home, except overnight. Includes home care and daytime sitter services.
	Away from home	(6)	In a day centre	Attendance at a Children & Families centre or any other day centre (only counted when the provision of a respite care break to the carer is an <i>explicit</i> reason for day centre attendance recorded in the care plan of the carer or the child/young person).
		(7)	Day activities not in a day centre	Day services and activities outside the home providing respite for the carer and not based in a day centre.
		(8)	Other day respite	Respite care in another family's home in daytime; Holiday breaks* without overnight stay.

**Note:** \*Holiday breaks include opportunities for the carer and cared-for person being supported to go away together, as well as breaks for either carer(s) or cared-for person(s) to go on holiday separately.

In **row (a)** Councils should report the total number of **nights** (for service types 1 to 4 in the table above), and in **row (c)** the total number of respite care **hours** (for service types 5 to 8), received during the reporting year, as rates per 1,000 population, adding up all respite episodes in the year, whether or not the respite care episode started in the previous reporting year or has yet to be completed.

In **row (b)** count the percentage of respite nights in service types 1, 3 and 4. In **row (d)** count the percentage of respite hours in service types 5, 7 and 8.

Respite is a reason for providing a service, and often is not a distinctive type of service. Short duration services provided for the child/young person with disabilities, for example emergency admission to hospital, or a programme of rehabilitation, provide the carer with a short break in the normal routine of caring as a by-product of the service provided to the child/young person.

Rehabilitation services and skills training for children with disabilities are of great benefit to their carers in helping to promote independence. However, none of these services are respite care breaks intended to support carers and are excluded from this performance indicator definition. Day centre services provided on a regular basis to a child with disabilities also provide carers with breaks from care tasks. However, they should only be included in this performance indicator if the provision of a respite care break to the carer is an explicit reason for this service recorded in the care plan of the carer or the cared-for person.

Befriending and sitter services should not be included unless they enable the carer to take a break of at least one hour from caring tasks.

Some children's homes may have beds specifically designated for respite use: exclude any non-respite residents who have been admitted to such beds. Some children may be admitted for respite which subsequently becomes non-respite. Count the period from admission up to the point when the reason for their continued residency has changed.

Where the short break involves the carer and child/young person remaining together, for example holidays together, the respite hours or bed-nights should be counted for one person receiving the short break, rather than for two.

The **contextual information** required is the number of respite nights and hours for each of the eight service types defined above. No information is required on the numbers of recipients.

### **Sources**

Council assessment and care management records and information systems.

Records and information systems used by voluntary organisations providing respite care under Council contract or SLA.

Population data should be based on the mid-year estimates for the year, published by the Registrar General.

### **Interpretation**

The indicator will be affected primarily by the pattern of need and services required, and by the availability of respite care.

## **AN OFFICIAL STATISTICS PUBLICATION FOR SCOTLAND**

Official and National Statistics are produced to high professional standards set out in the Code of Practice for Official Statistics at <http://www.statisticsauthority.gov.uk/assessment/code-of-practice/code-of-practice-for-official-statistics.pdf>. Both undergo regular quality assurance reviews to ensure that they meet customer needs and are produced free from any political interference.

Further information about Official and National Statistics can be found on the UK Statistics Authority website at [www.statisticsauthority.gov.uk](http://www.statisticsauthority.gov.uk)

## **SCOTTISH GOVERNMENT STATISTICIAN GROUP**

### **Our Aim**

To provide relevant and reliable information, analysis and advice that meet the needs of government, business and the people of Scotland.

For more information on the Statistician Group, please see the Scottish Government website at [www.scotland.gov.uk/statistics](http://www.scotland.gov.uk/statistics)

### **Correspondence and enquiries**

Enquiries on this publication should be addressed to:

Steven Gillespie  
Analytical Services Division  
Health Directorate  
St Andrews House  
EDINBURGH, EH1 3DG  
Telephone: 0131 244 3777; Fax:  
0131 244 2371  
e-mail: [Swstat@scotland.gsi.gov.uk](mailto:Swstat@scotland.gsi.gov.uk)

General enquiries on Scottish Government statistics can be addressed to:

Office of the Chief Statistician and Performance  
Scottish Government  
4N.06, St Andrews House  
EDINBURGH EH1 3DG  
Telephone: (0131) 244 0442  
e-mail: [statistics.enquiries@scotland.gsi.gov.uk](mailto:statistics.enquiries@scotland.gsi.gov.uk)

Further contact details, e-mail addresses and details of previous and forthcoming publications can be found on the Scottish Government Website at [www.scotland.gov.uk/statistics](http://www.scotland.gov.uk/statistics)

### **Complaints and suggestions**

If you are not satisfied with our service, please write to the Chief Statistician, 4N.06, St Andrews House, Edinburgh, EH1 3DG, Telephone: (0131) 244 0302, e-mail [statistics.enquiries@scotland.gsi.gov.uk](mailto:statistics.enquiries@scotland.gsi.gov.uk). We also welcome any comments or suggestions that would help us to improve our standards of service.

### **ScotStat**

If you would like to be consulted about new or existing statistical collections or receive notification of forthcoming statistical publications, please register your interest on the Scottish Government ScotStat website at [www.scotland.gov.uk/scotstat](http://www.scotland.gov.uk/scotstat)

ISBN 978-1-78256-210-8

### **Crown Copyright**

Brief extracts from the Crown Copyright material in this publication may be reproduced provided the source is fully acknowledged.