



WWF

FOR YOUR WORLD

Food and Farming – What might the future look like?

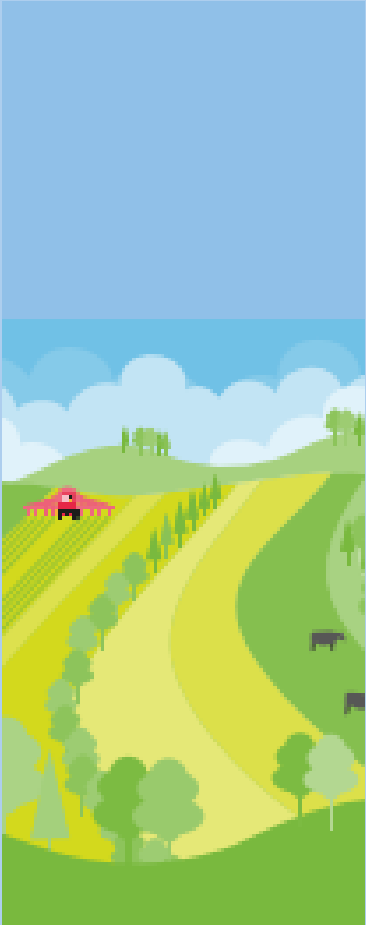
Sheila George
Food and Environment Policy Manager
WWF Scotland



WWF

FOR YOUR WORLD

What does the future look like?



- Profitable, sustainable and resilient rural businesses
- Wildlife thrives on farms
- GHG emissions from agriculture have reduced
- Land is capturing and storing more carbon
- Farmers produce world-class, nutritious, sustainable and affordable food, contributing to a Good Food Nation

Where are we now?

Economic



FOOD AND DRINK IN SCOTLAND:
AMBITION 2030

Turnover in Food and Drink Sector worth ~ **£15Bn**

- But – huge dependency on subsidies
- Almost half of farmers can't pay themselves the agricultural minimum wage
- 1 in 10 children living in food poverty

Social



Top class produce

- 2/3 adults overweight or obese
- Diabetes
- Heart disease
- Mental health and well-being issues
- Growth of reliance on food banks

Environmental



40% Scotland is high nature value farmland

- Food production and consumption key driver of wildlife declines
- ¼ GHG emissions
- Pollution
- Global supply chain impacts
- 1/3 food wasted

Climate emergency challenges and opportunities

2017/2018 SEVERE WEATHER IMPACTED ON LIVESTOCK NUMBERS AND YIELDS OF KEY CROPS.

LOSSES TO SCOTTISH AGRICULTURE ESTIMATED AT

£161 MILLION,

EQUIVALENT TO 6% OF TOTAL OUTPUT IN 2017.

SECTOR LOSSES



STORM EMMA DISRUPTED ESSENTIAL SUPPLIES AND DELIVERIES TO RETAILERS AND LED TO SHORTAGES IN SHOPS.

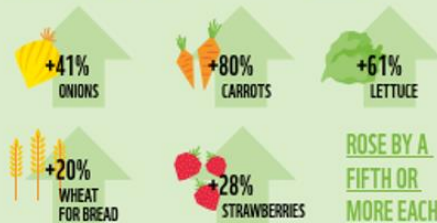


MARCH - JULY

THE UK WHOLESALE "FARM GATE" PRICES OF SOME STAPLES INCREASED BY UP TO 80%.



THE FARM GATE PRICE OF



THE SUPPLY OF MALT BARLEY TO SCOTLAND'S DISTILLING AND BREWING SECTORS WAS IMPACTED BY BOTH QUALITY AND YIELD ISSUES DUE TO THE DROUGHT

UK MALT BARLEY PRICES ROSE FROM AROUND £150/TONNE DURING 2017 TO A PEAK OF OVER £200/TONNE.



Land use: Policies for a Net Zero UK

Committee on Climate Change
January 2020



What change is required?

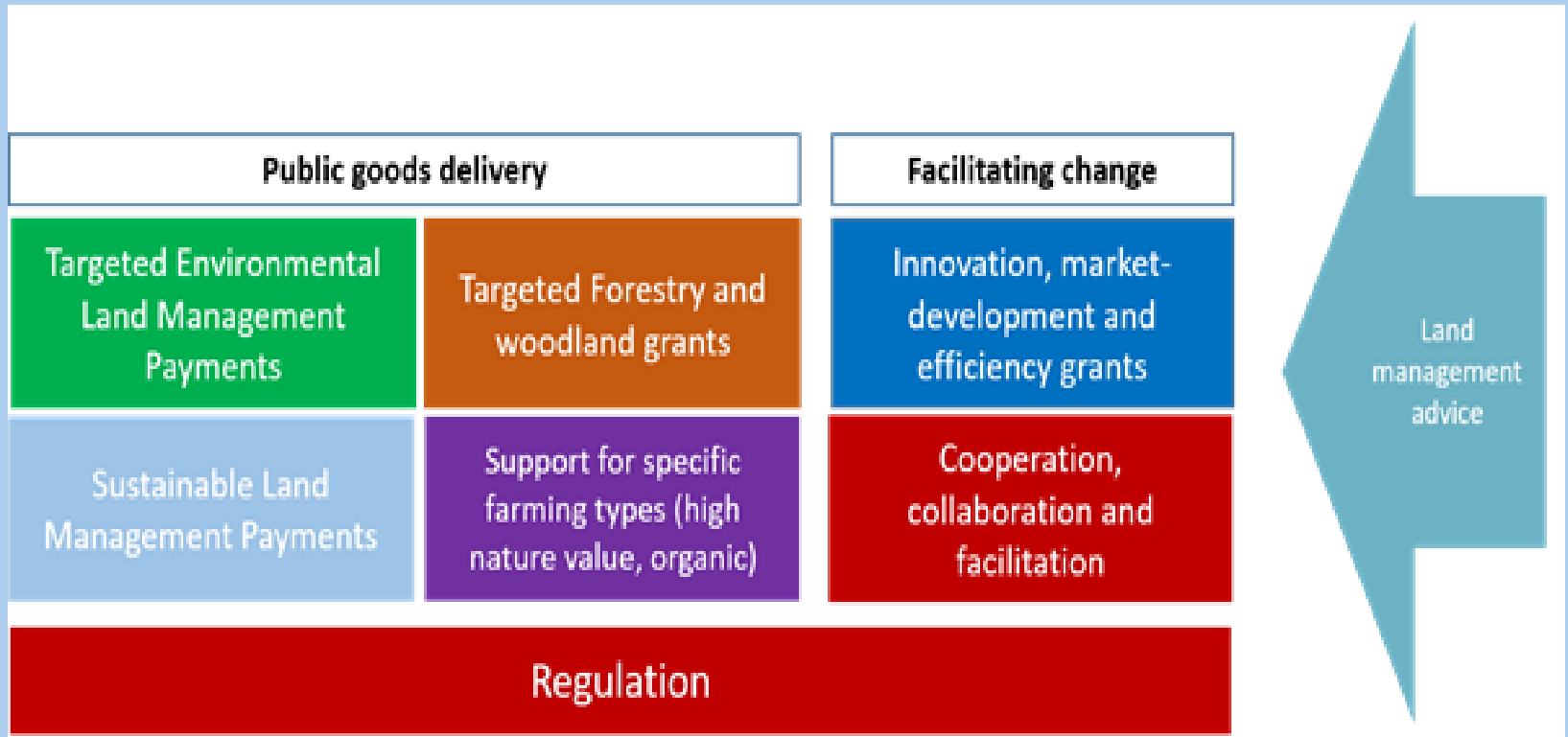
- **Retain** – at least the same level of support
 - Essential to meet growing challenges
 - Strong case for greater share for Scotland



Future rural support - Long term

- **Reshape** – need to retarget to delivery of:
 - public goods - 77% of the public want to see farm support targeted at environment and climate outcomes
 - investment to facilitate change, adaptation and access to markets;
 - and research, knowledge exchange, advice and training





What change is required?

- **Renew** – and revitalise rural areas
 - Rural businesses are resilient, sustainable and profitable
 - Soils, water and air are healthy and wildlife is making a recovery on farms
 - Taxpayer's money is spent in a strategic, transparent ways and delivers public goods





Future rural support – short term

- Climate Change Act
- Climate Change Plan
- Land Use Strategy
- Agriculture Bill
- Good Food Nation Bill
- Just Transition



FOR YOUR WORLD

Thank you!