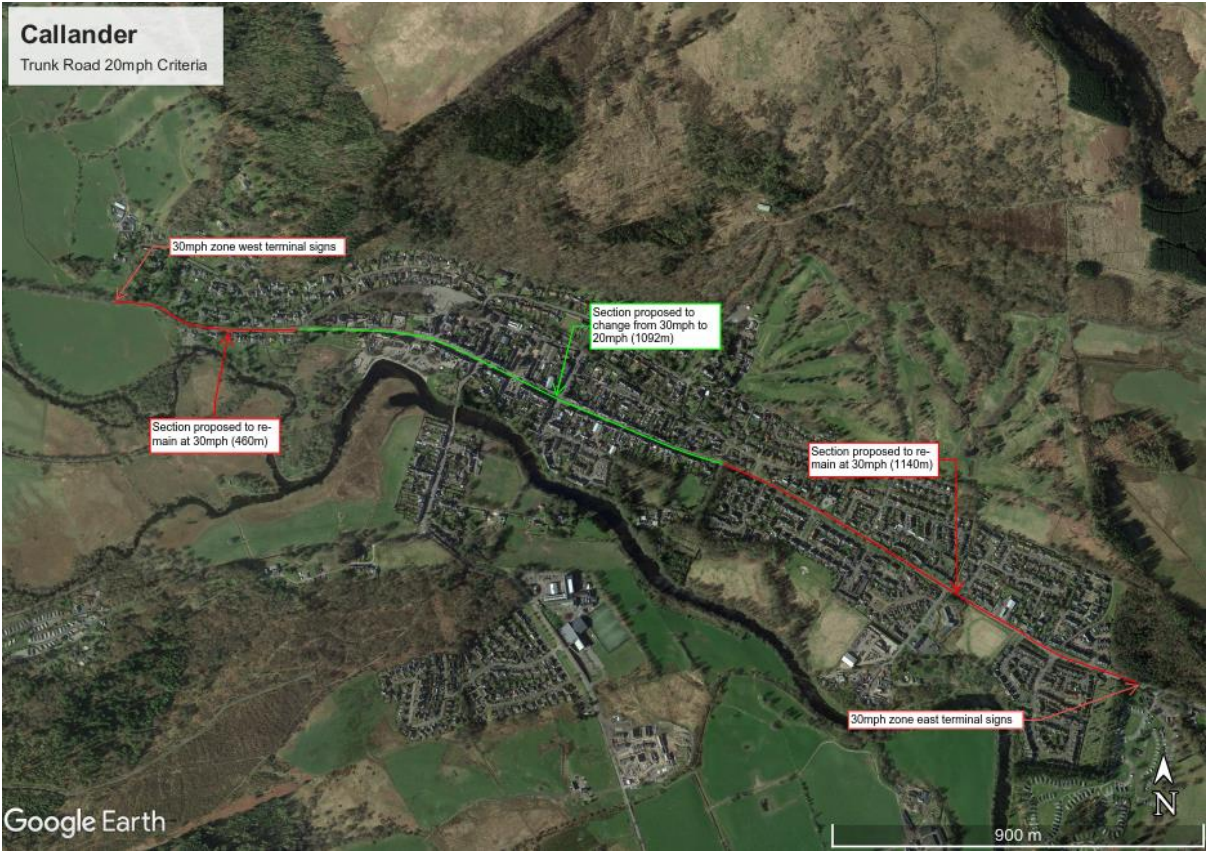


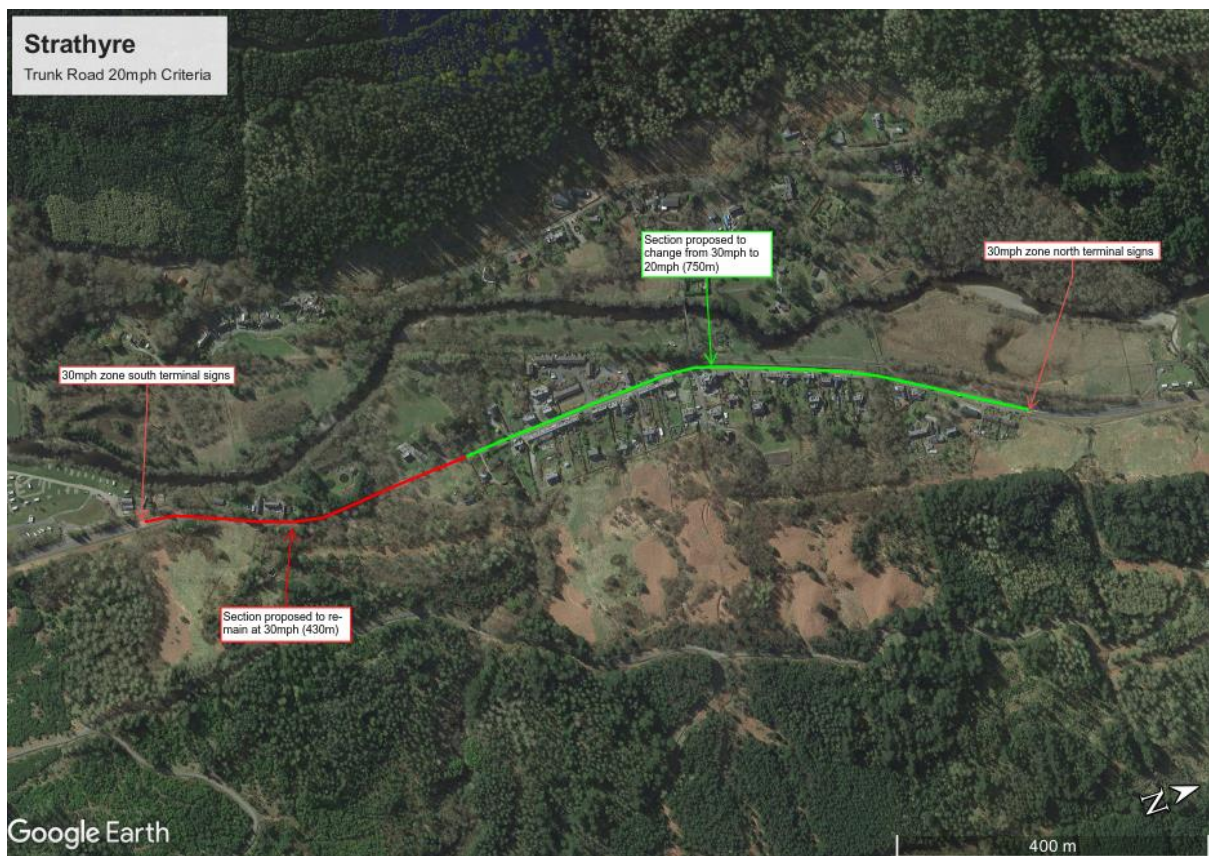
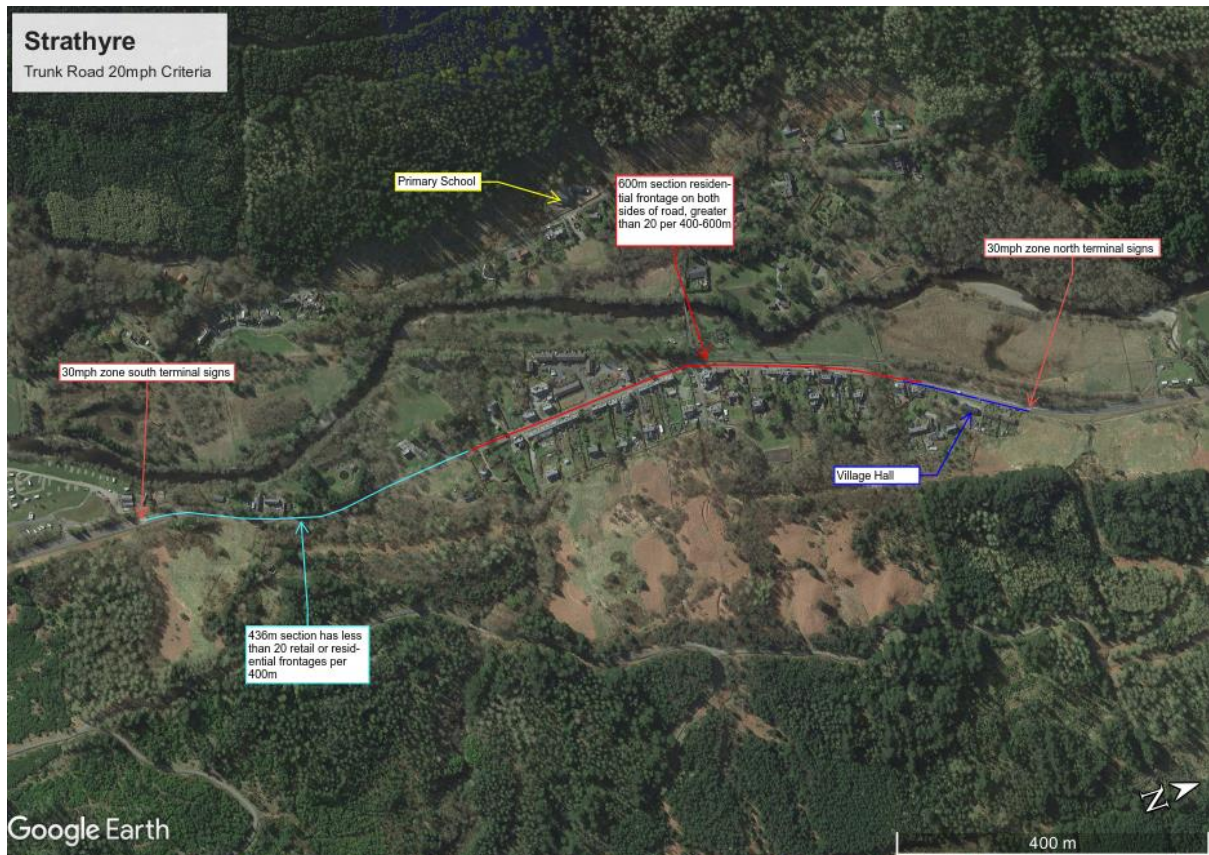
Callander (A84)



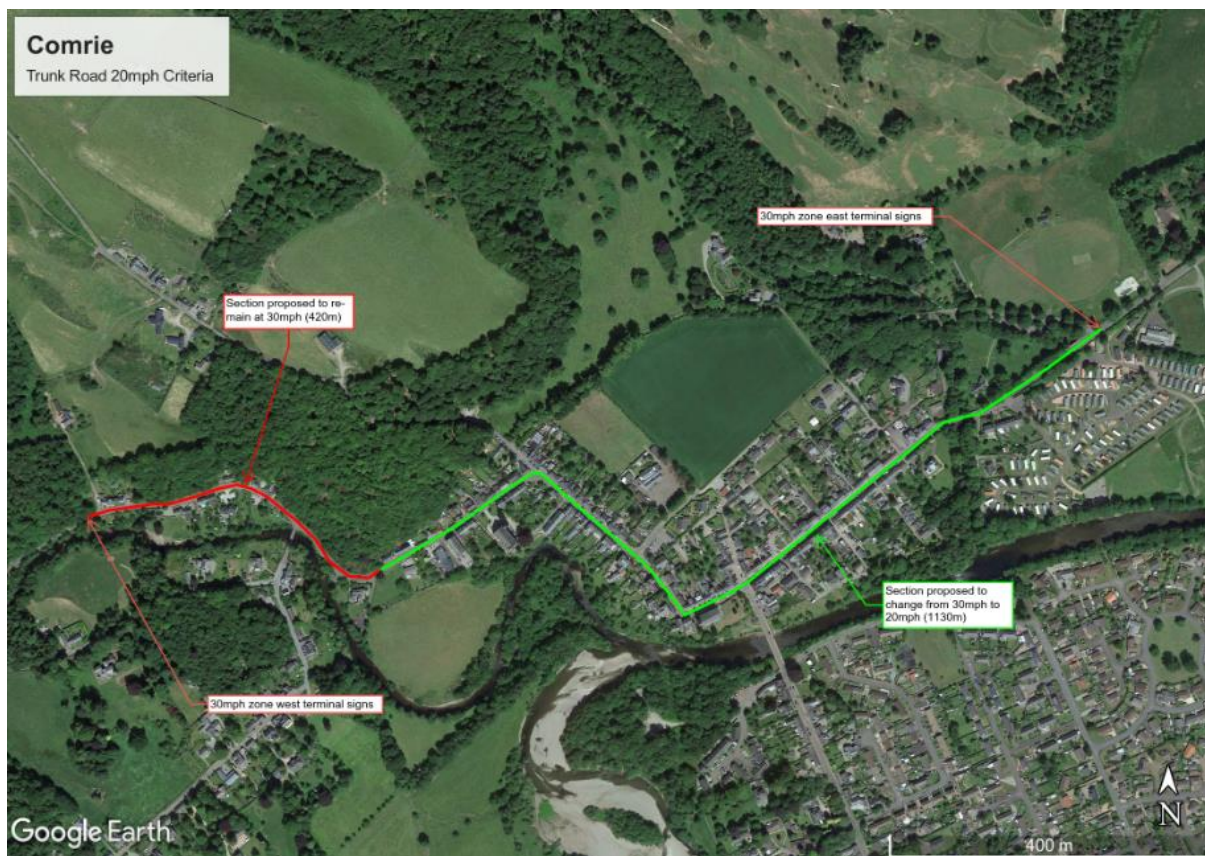
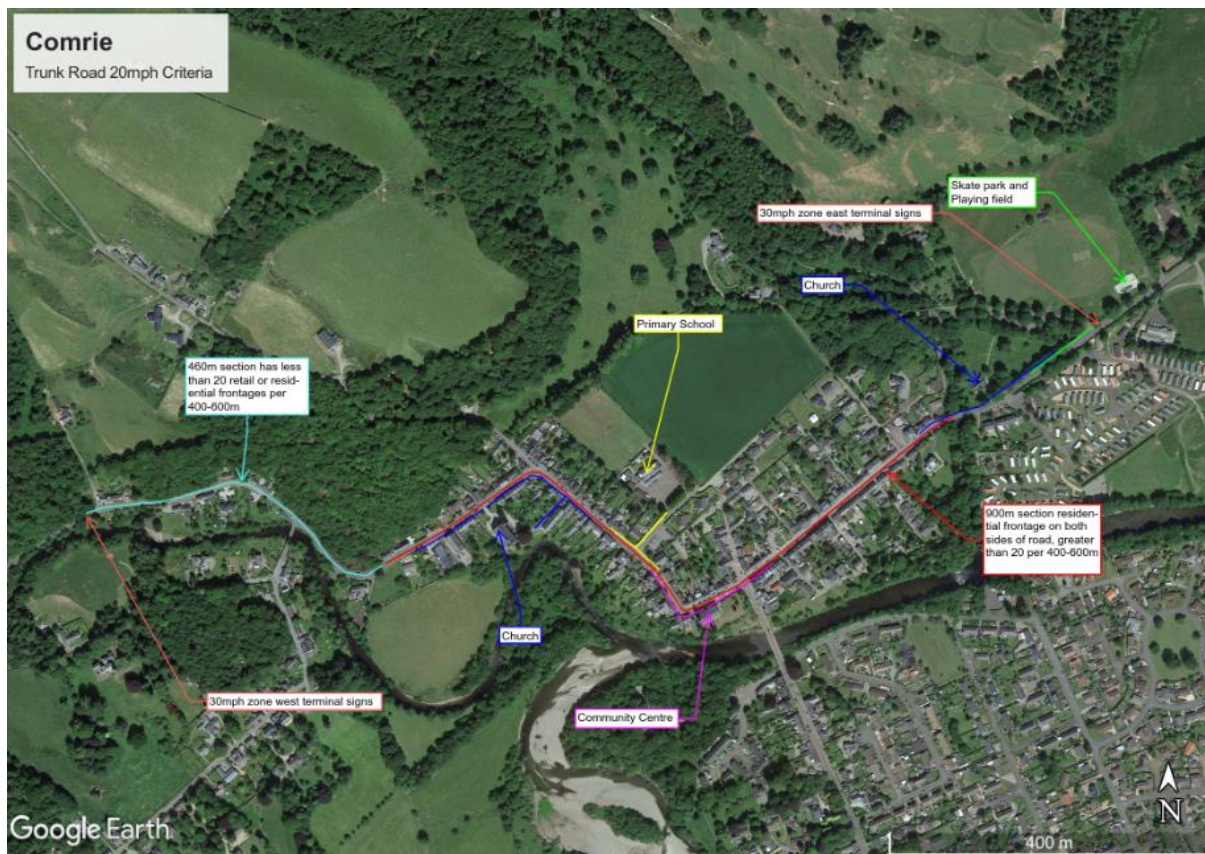
Callander
Trunk Road 20mph Criteria



Strathyre (A84)



Comrie (A85)



Crianlarich (A85)



St Fillans (A85)



050 – Lochearnhead (A84)





Ref	Route	Town	Carriageway Details	Start X Coordinate	Start Y Coordinate	End X Coordinate	End Y Coordinate	Length (km)	Currently Temporary 20mph	Criteria A (Educational Setting)	Criteria B (Frontage)	Criteria C (Local Amenities)	Does Section meet the Criteria for 20mph	Partial or whole section	Rag Rating (Red/Amber/Green)	Additional Comments	Council Area
048	A84	Callander	Single Carriageway	264338	707101	261820	708128	2.7	Yes (Partial)	No	Yes	Yes	Yes	Partial (1092m)		East section is residential but most properties frontage to a side road with minimal retail premises. Medical centre is within 100m of the A84 however the section affected is below the recommended length for a change in speed limit. Through town centre multiple local amenities such as churches and significant frontage.	Stirling
049	A84	Strathyre	Single Carriageway	256036	716460	256287	717566	1.18	No	No	Yes	Yes	Yes	Partial (750m)		Community Hall to north of section, more than 20 residential and retail premises frontage to section of A84. 430m section to south of village does not meet criteria.	Stirling
050	A84	Lochearnhead	Single Carriageway	258916	723236	258871	723800	0.85	No	No	No	Yes	No	None	n/a	Church which does not front to the A84 is within 100m walk but length which meets criteria is significantly below recommended length for change in speed limit.	Stirling
054	A85	Comrie	Single Carriageway	277782	722290	276511	722093	1.55	Yes (Partial)	Yes	Yes	Yes	Yes	Partial (1130m)		Primary School within 100m of section of A85. Churches, community centre and significant frontage on this section of A85. At west extent of scheme there is 420m which does not meet the criteria for a 20mph speed limit.	Perth and Kinross
055	A85	St Fillans	Single Carriageway	270329	724140	268790	724652	1.82	No	No	Yes	Yes	Yes	Partial (1100m)		Church and residential/retail frontage more than 20 per 400-600m on this section of the A85. 740m section to the west has minimal frontage and no local amenities.	Perth and Kinross
056	A85	Lochearnhead	Single Carriageway	260220	723934	258730	724061	1.72	No	No	No	Yes	No	None	n/a	Community hall is the only local amenity which frontages to this section of the A85. The primary school in Lochearnhead is more than 100m from this section of the A85. As a result the length which meets the criteria is below the recommended length for a change in speed limit.	Stirling
057	A85	Crianlarich	Single Carriageway	238941	725136	238023	725562	1.03	No	Yes	Yes	Yes	Yes	Whole		Primary School, Village hall, Church, Police Station and Fire Station on this section of the A85. West section has 20 residential and retail premises over 600m and road layout would suit a 20mph limit	Stirling

EIR Data Request - Micase 202500488440 - Alastair MacColl - Speed Limits Lochearnhead

Automatic Traffic Counter - A85 West of Comrie

	ADT	Diff	%	% HGV	Diff
2022	1,963	-	-	14.20%	-
2023	2,049	86	4%	13.90%	-0.30%
2024	1,978	-71	-4%	14.70%	0.80%
2025	2,160	182	8%	14.50%	-0.20%

Automatic Traffic Counter - A84(T) Leitters Farm

	ADT	Diff	%	% HGV	Diff
2022	3,476	-	-	10.20%	-
2023	3,593	117	3%	9.90%	-0.30%
2024	3,608	15	0%	9.70%	-0.20%
2025	4,006	398	10%	9.90%	0.20%

Automatic Traffic Counter - A85(T) Glenogle Farm

	ADT	Diff	%	% HGV	Diff
2022	3,937	-	-	19.40%	-
2023	4,122	185	4%	19.00%	-0.40%
2024	4,139	17	0%	19.10%	0.10%
2025	4,574	435	10%	19.40%	0.30%

* ADT = Average Daily Traffic

