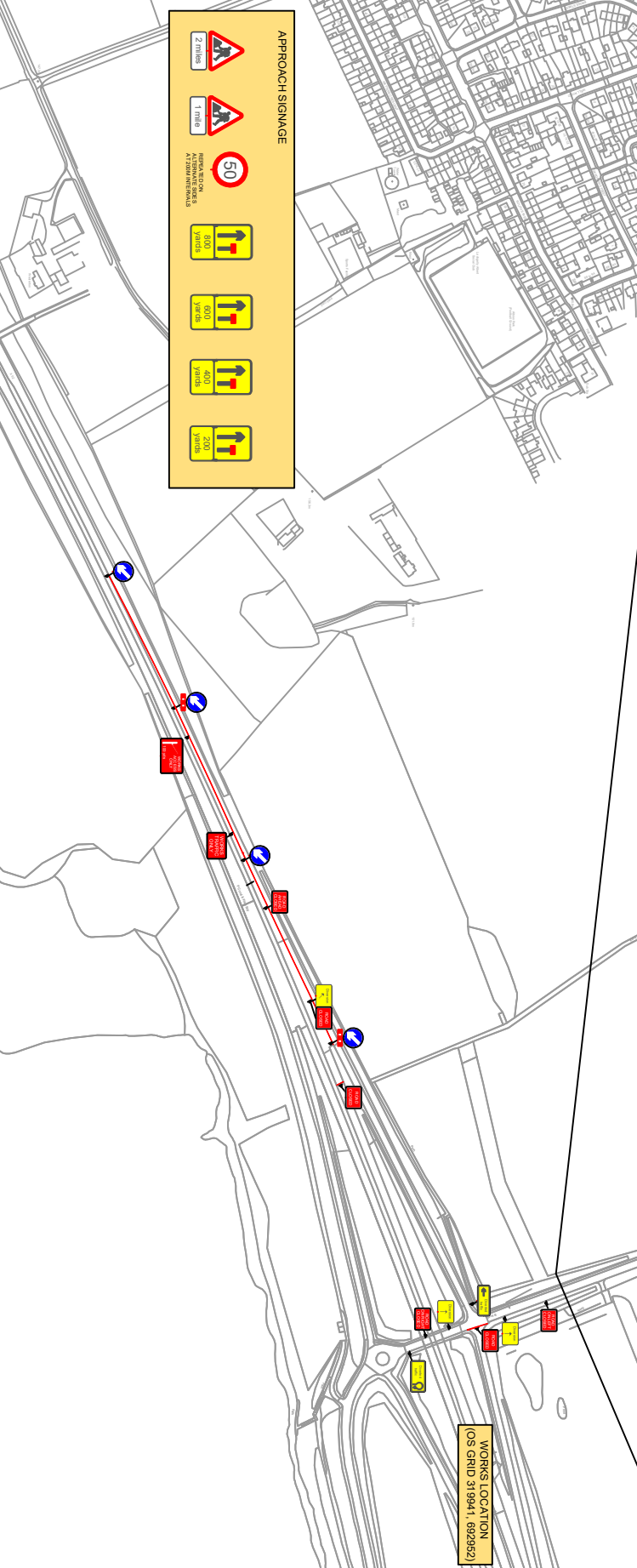
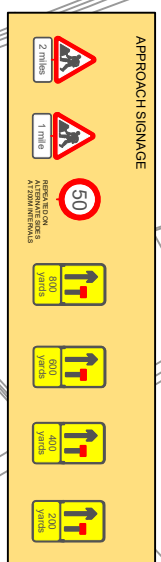
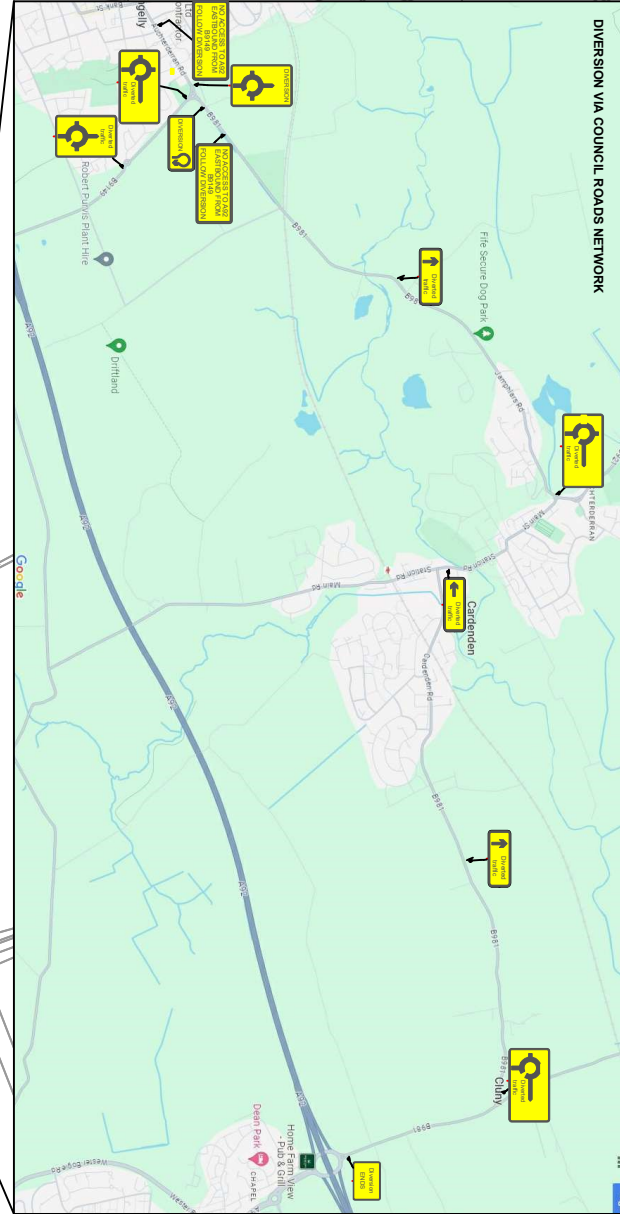


CHAPTER 8 DETAILS

TRAFFIC LIGHT HEAD
 1.2M SAFETY ZONE
 VRS
 WORKS AREA
 TRAFFIC LIGHT HEAD
 PEDESTRIAN LIGHT HEAD
 TRAFFIC LIGHT HEAD BASE AND DIRECTION

DRAWING DETAILS

CONES
 1.2M SAFETY ZONE
 VRS
 WORKS AREA
 TRAFFIC LIGHT HEAD
 PEDESTRIAN LIGHT HEAD
 TRAFFIC LIGHT HEAD BASE AND DIRECTION



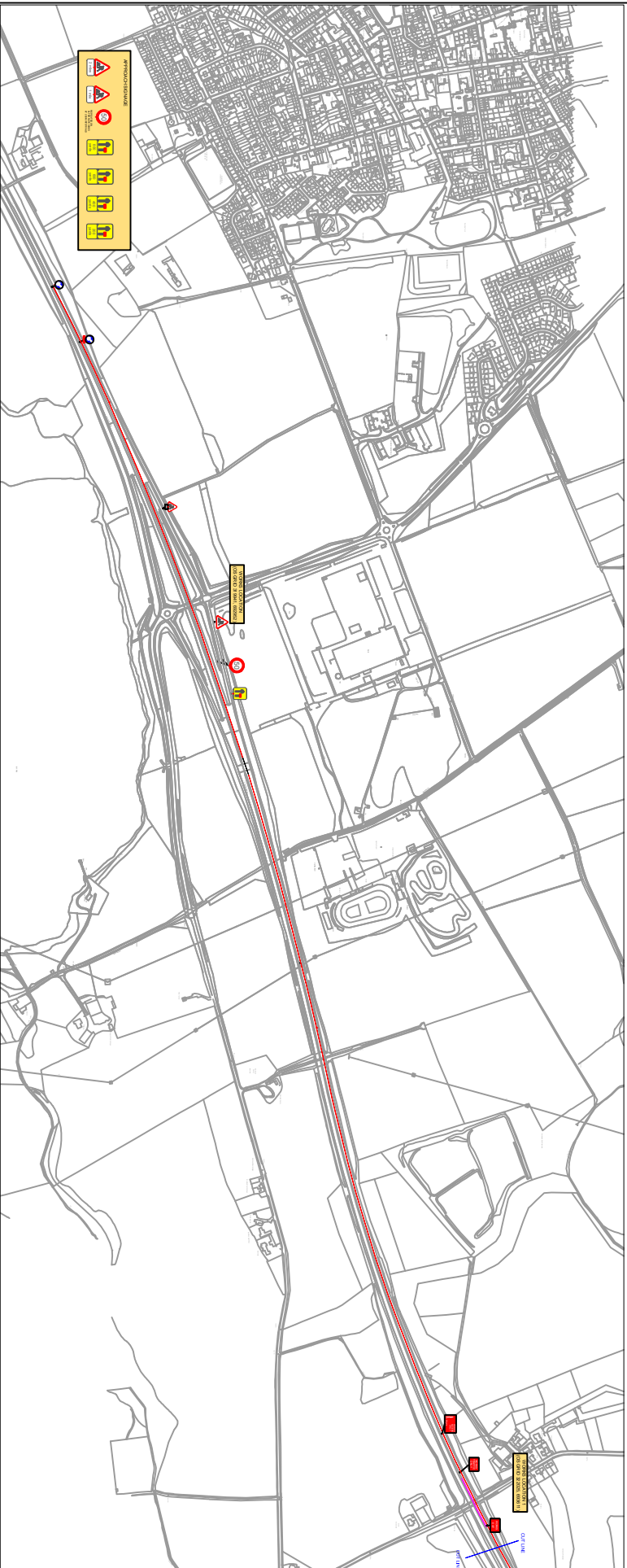
NOTES :-

50
 WORKS TO BE STOPPED BY WHEN WORKS ARE BEING INSTALLED
 WORKS TO BE STOPPED BY WHEN WORKS ARE BEING INSTALLED
 WORKS TO BE STOPPED BY WHEN WORKS ARE BEING INSTALLED

REVISION	NO.	DATE	BY	REASON

Class One Traffic Management Ltd
 Class One House,
 Scaleggs Road,
 Chapel Hill,
 Fkd 2AQ
 Tel : 01324 810222
 Fax : 01324 810444
 www.classone.org
 mail@classone.org

Drawn By: JFS
 Scale: NTS
 Date: 27.06.2024
 Main Contractor: HBS
 Location: A52 BETWEEN B9149 & CHAPEL HILL
 Traffic Management Arrangement: A52 TOTAL SHUT AT B9149 NORTHBOUND
 Drawing No: TM-004
 Revision: 1



BBA AWARDS
LANTRA AWARDS
APPROVED

APPROVED INSTALLER 8594
 High Friction Surfaces Installer
UNDA Verity

ALL CLASS ONE OPERATIVES ENGAGED IN OPERATIONS ARE LANTRA APPROVED AND ACCREDITED TO SECTOR SCHEME 12

TMCA
 TRAFFIC MANAGEMENT CONTRACTORS ASSOCIATION
 Verified

CHAPTER 8 DETAILS

TRAFFIC LIGHT HEAD

PEDESTRIAN LIGHT HEAD

TRAFFIC LIGHT HEAD BASE AND DIRECTION

WORKS AREA

1.2M SAFETY ZONE

CONES

SIGN

NOTES :-

50 WORKING SPEED LIMIT IN THIS AREA. ALL VEHICLES MUST BE STOPPED BY THE WORKS AREA AND MUST NOT ENTER THE WORKS AREA UNLESS THE WORKERS ARE IN THE CLEARANCE AREA.

WORKS AREA TO BE STOPPED BY WHEN WORKERS ARE BEING INSTALLED/REMOVED AND DISPLAYED AT ALL OTHER TIMES

REVISION	NO.	DATE	BY	REASON

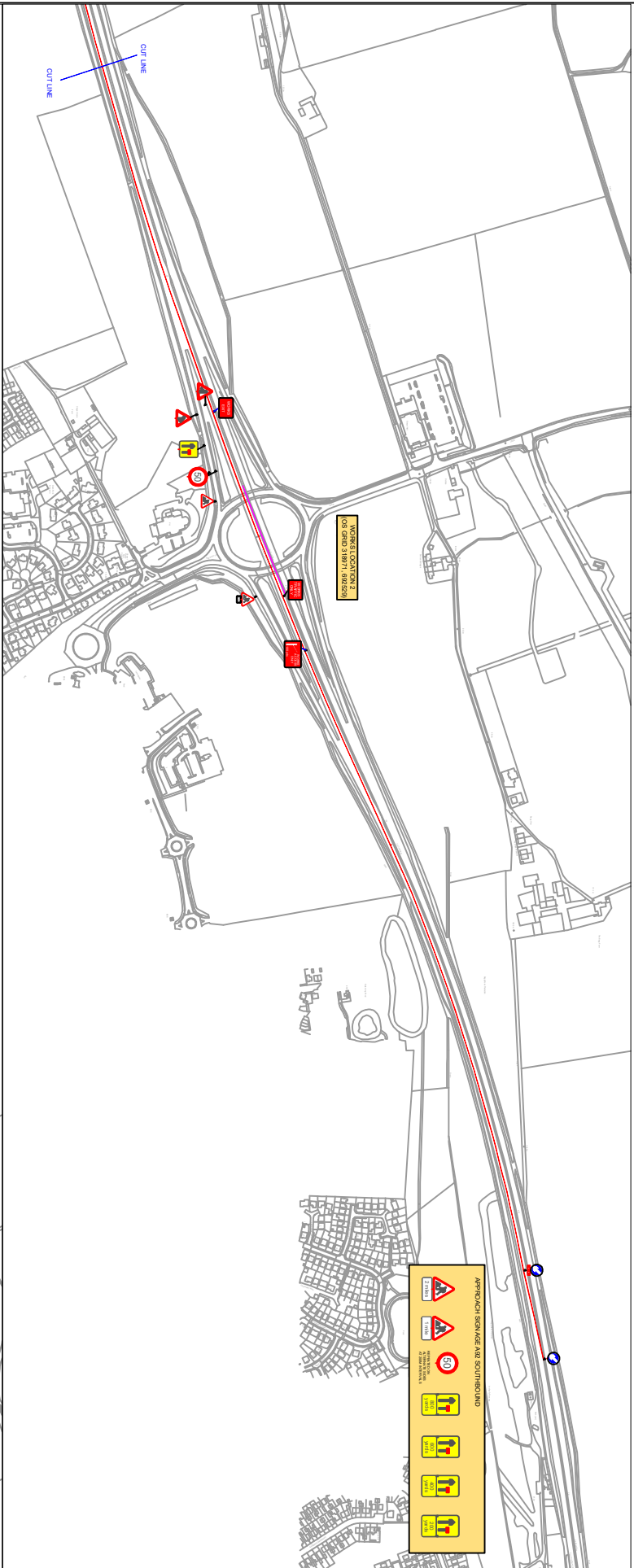
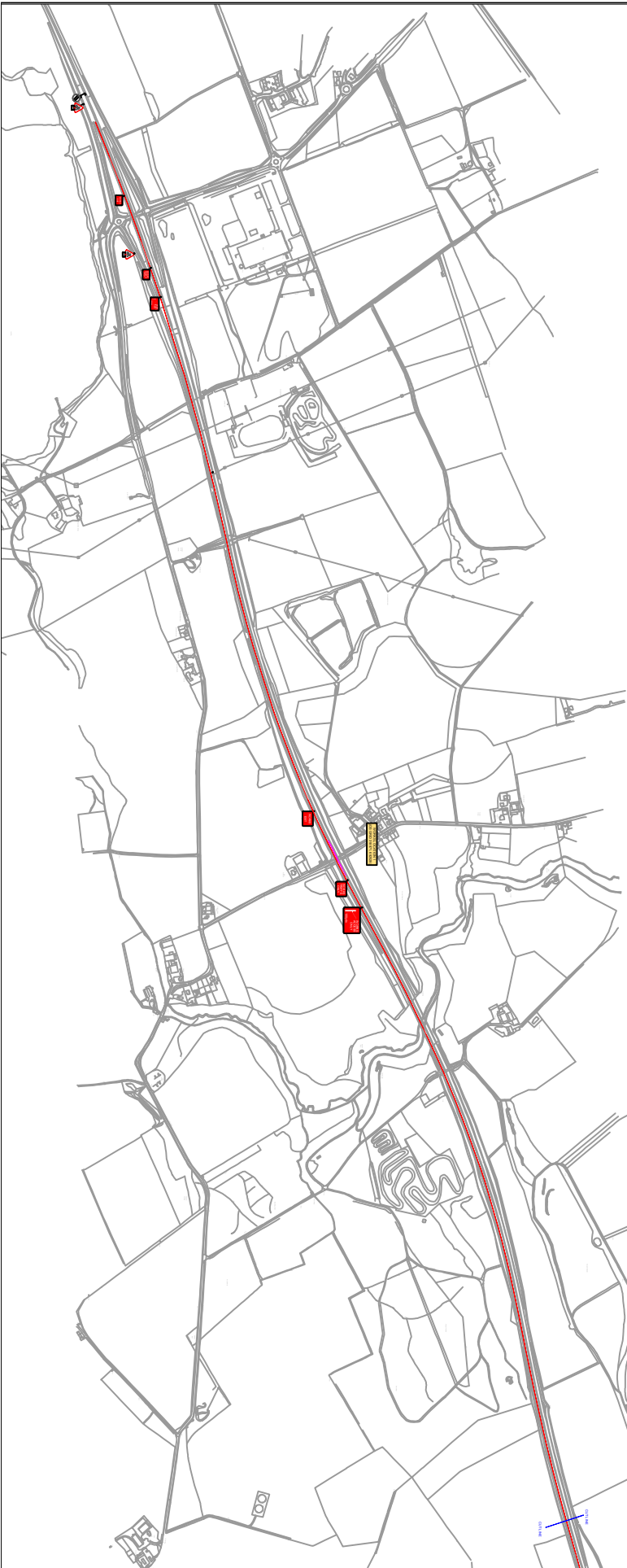
Class One Traffic Management Ltd

Class One House
 Scaleggs Road,
 Fildes Way
 Tel : 01324 810222
 Fax : 01324 810444
 www.classone.org
 mail@classone.org

Drawn By: JFS
 Scale: NTS
 Date: 06.08.2024
 Main Contractor: HBS
 Location: A92 BETWEEN BR1418 & CHAPEL JUNCTION
 Traffic Management Arrangement: Lane Closures A92 NORTHBOUND
 Drawing No: TM-004
 Revision:

Checked By: SP
 Date:

Original Drawing Size: A1



APPROACH SIGNAGE FOR SOUTHBOUND

BBA AWARDS
LANTRA AWARDS
APPROVED

High Friction Surface Installer
 Approved Installer 8594

UNDA Verity
 Verified

TMCA
 TRAFFIC MANAGEMENT CONTRACTORS ASSOCIATION
 Verified

ALL CLASS ONE OPERATIVES ENGAGED IN TEMPORARY TRAFFIC MANAGEMENT OPERATIONS ARE LANTRA APPROVED AND ACCREDITED TO SECTOR SCHEME 12

CHAPTER 8 DETAILS

TRAFFIC LIGHT HEAD
 PEDESTRIAN LIGHT HEAD
 TRAFFIC LIGHT HEAD BASE AND DIRECTION

WORKS AREA
 1.2M SAFETY ZONE
 VRS
 CONES
 SIGN

NOTES :-

50
 WORKS TO BE STOPPED IMMEDIATELY IF A TRAFFIC LIGHT HEAD OR PEDESTRIAN LIGHT HEAD IS DAMAGED OR MISSING. THE ROAD SHOULD BE CLOSED IMMEDIATELY AND THE ROAD CLOSED SIGN SHOULD BE DISPLAYED AT ALL OTHER ENDS.

WORKS TO BE STOPPED IMMEDIATELY IF A TRAFFIC LIGHT HEAD OR PEDESTRIAN LIGHT HEAD IS DAMAGED OR MISSING. THE ROAD SHOULD BE CLOSED IMMEDIATELY AND THE ROAD CLOSED SIGN SHOULD BE DISPLAYED AT ALL OTHER ENDS.

REVISION	NO.	DATE	BY	REASON

Class One Traffic Management Ltd

Class One House,
 Seabrook Road,
 Seabrook, Bournemouth,
 BH4 2AQ
 Tel : 01324 810222
 Fax : 01324 810444
 www.classone.org
 mail@classone.org

Drawn By: JFS
 Scale: NTS
 Date: 27.06.2024
 Main Contractor: HBS
 Location: A22 BETWEEN CHAPEL JCT & B9149
 Traffic Management: Lane Closure A22 SOUTHBOUND
 Drawing No: TM-003
 Checked By: SP
 Date: 27.06.2024
 Revision: 1

Original Drawing Size: A1