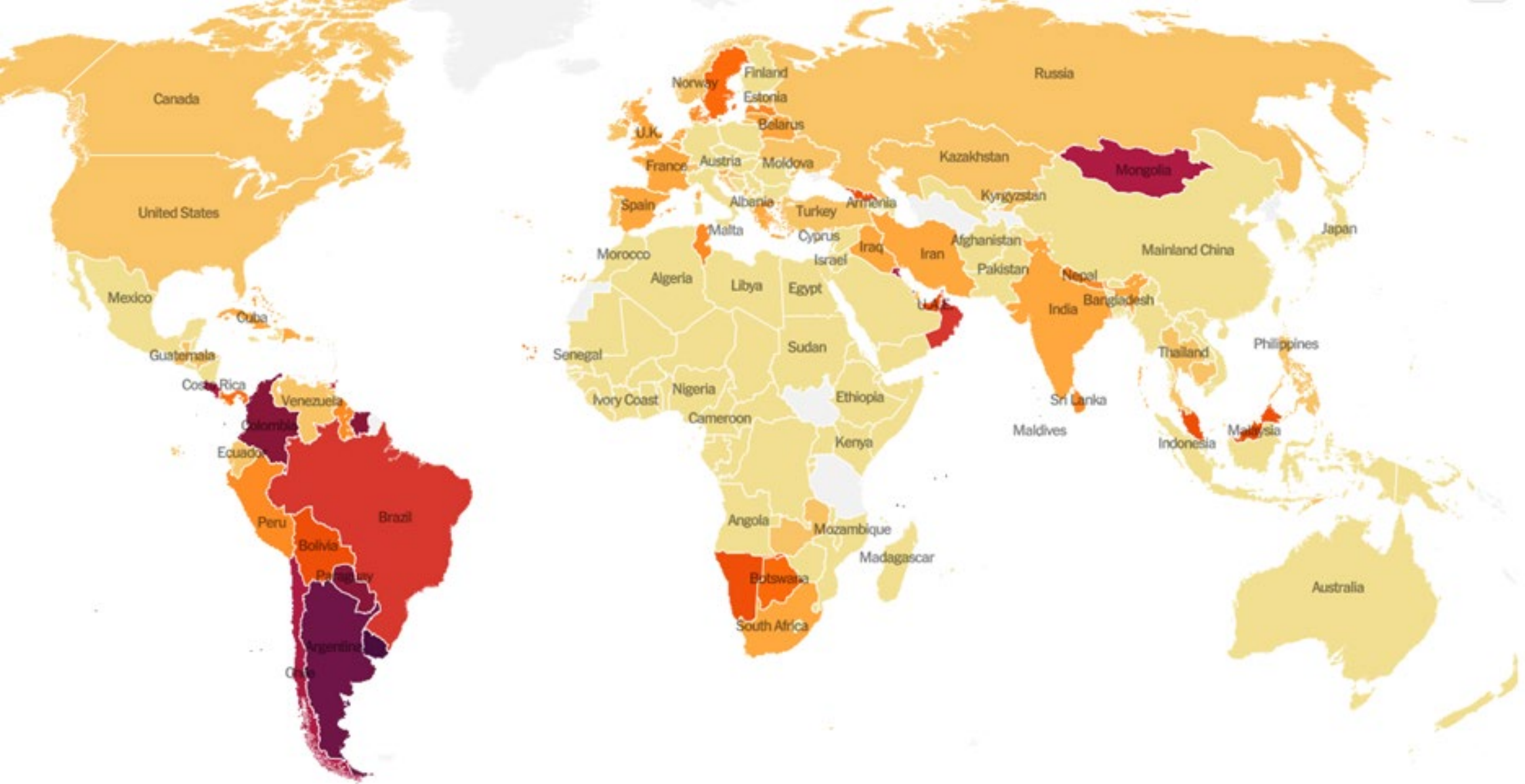
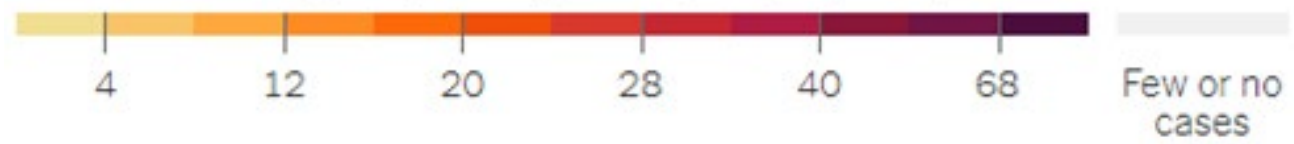
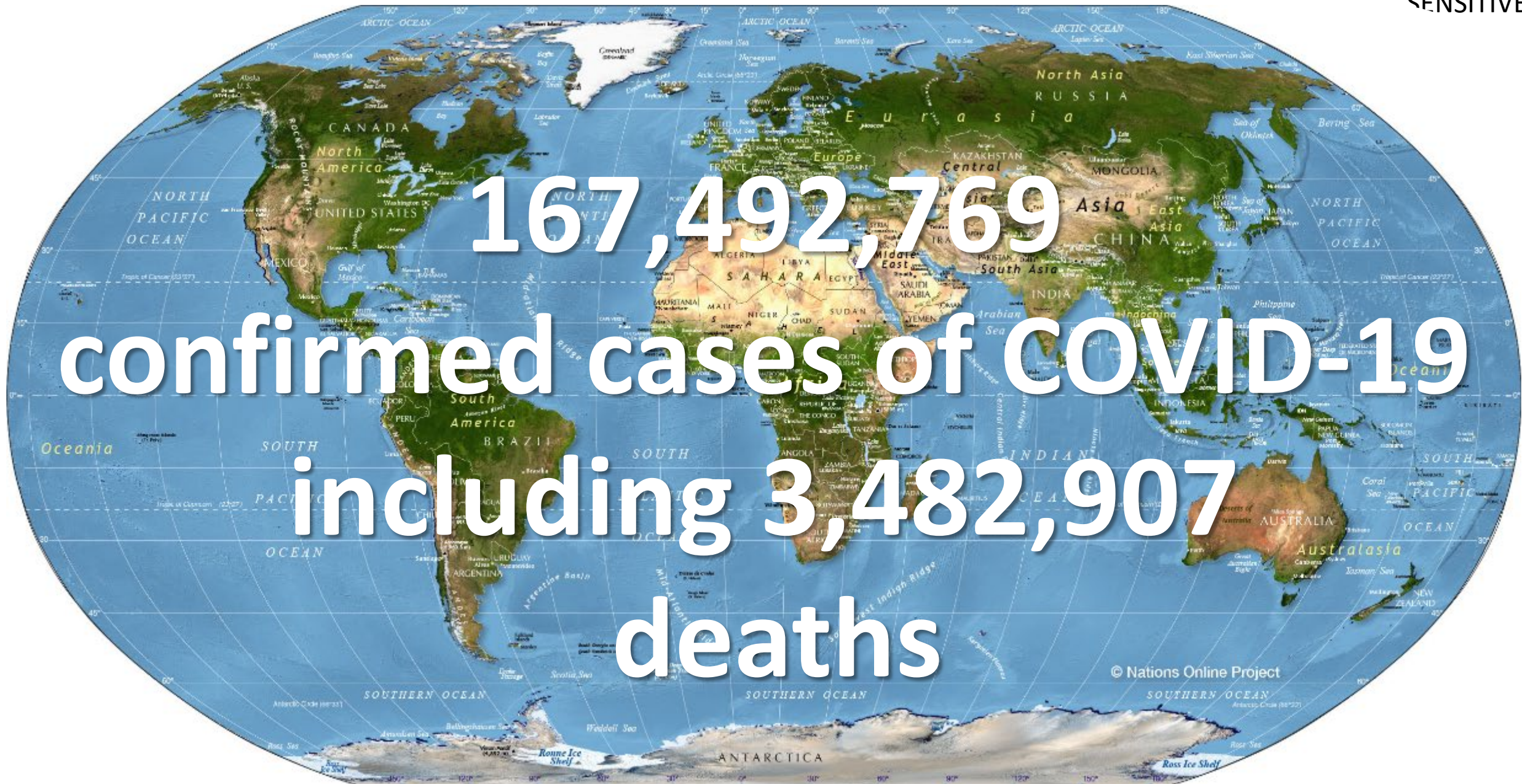


Covid: State of the epidemic



Average daily cases per 100,000 people in past week





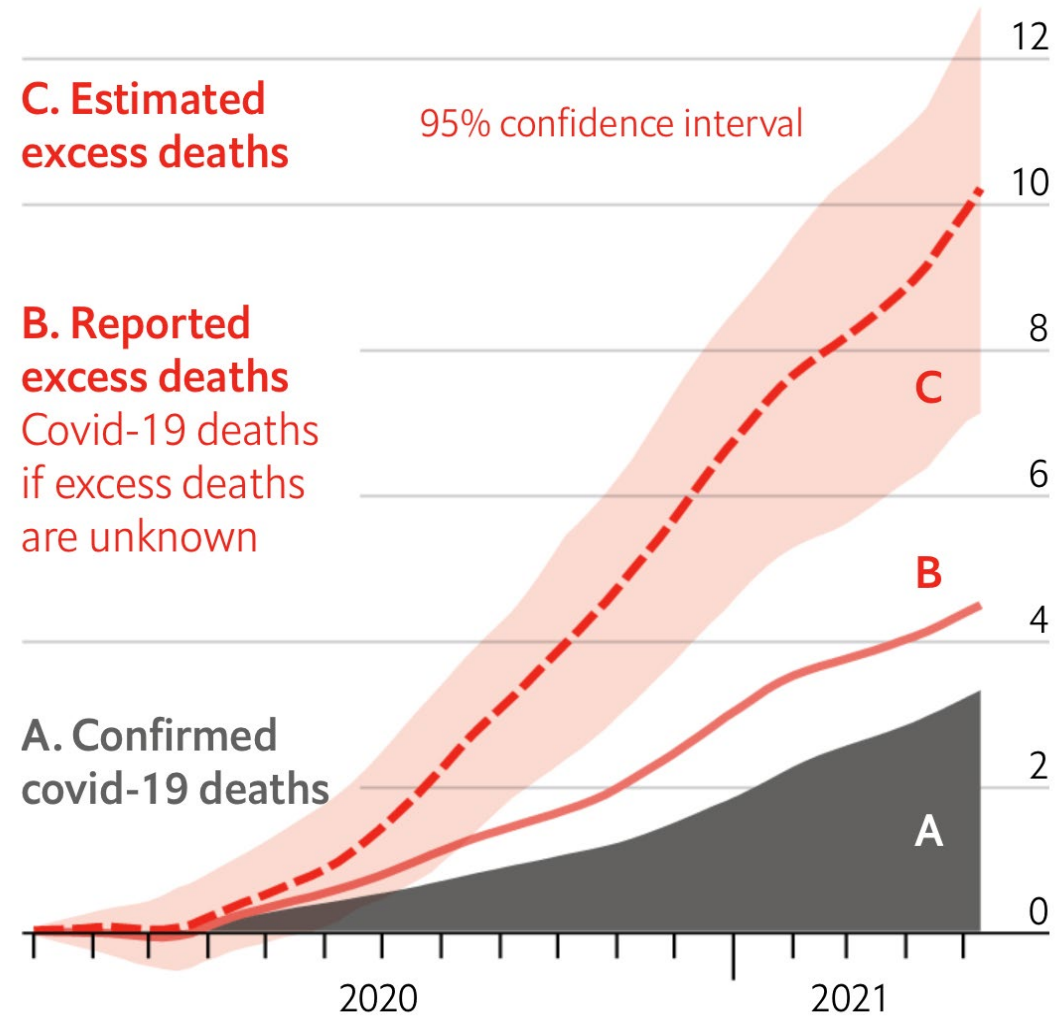
167,492,769

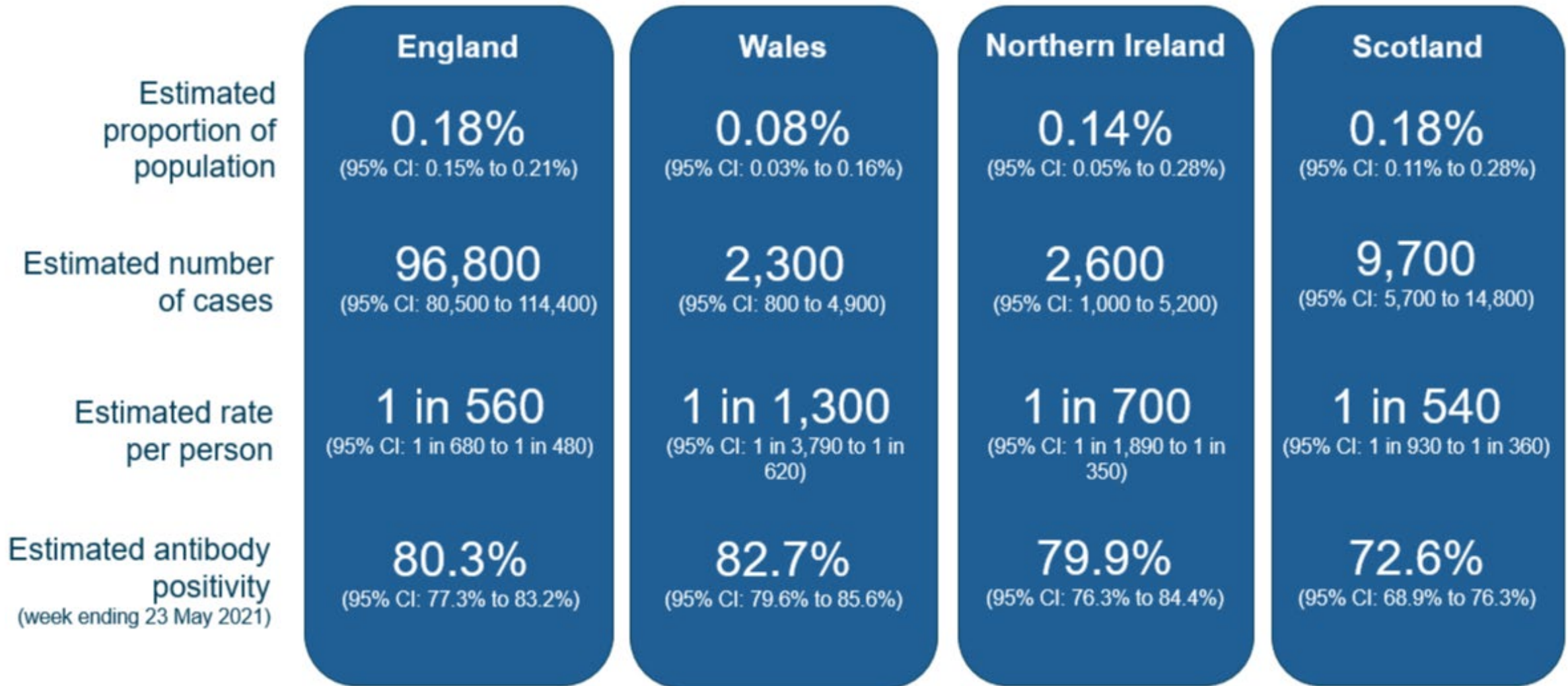
confirmed cases of COVID-19

including 3,482,907

deaths

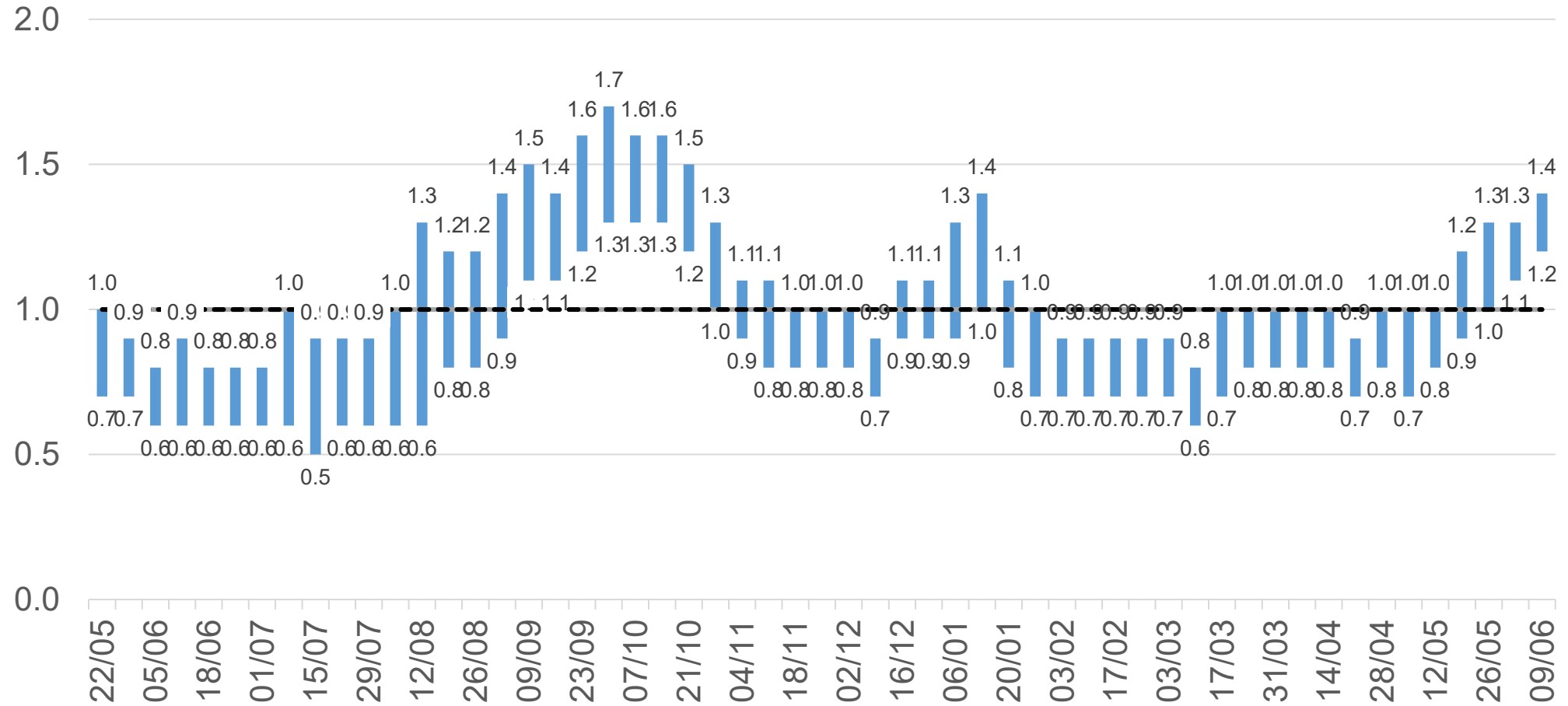
The Economist: Global estimated excess deaths vs confirmed deaths (million)





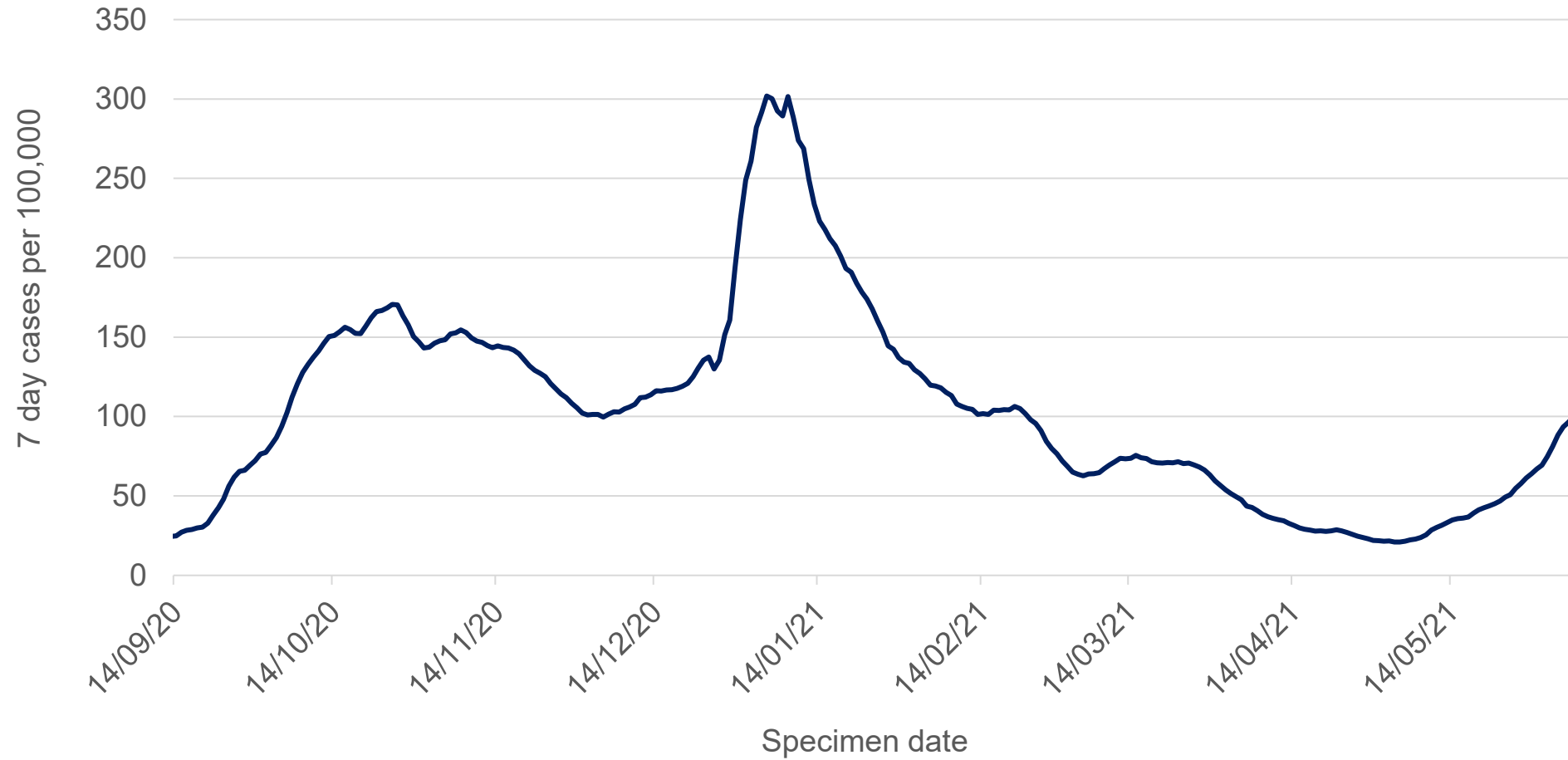
Provisional R-rate in Scotland

OFFICIAL
SENSITIVE



Seven day case rate for Scotland per 100,000 population by specimen date

OFFICIAL
SENSITIVE



7 Day Cases per 100,000 population by Local Authority

OFFICIAL
SENSITIVE

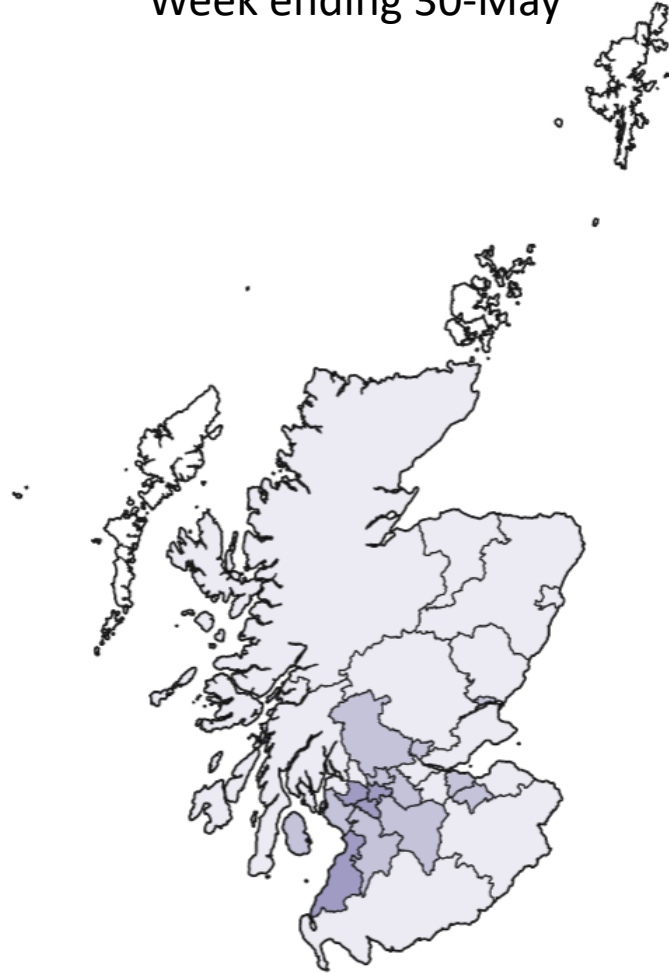
	Total new cases in the week, per 100,000 population	Change since previous day	Change since previous week	Weekly Trend (30-May 06-Jun)
Clackmannanshire	215	12	157	
Dundee City	214	12	114	
South Ayrshire	181	2	67	
City of Edinburgh	181	6	91	
Glasgow City	158	-1	28	
Angus	166	10	130	
Midlothian	155	19	68	
East Ayrshire	136	6	70	
Renfrewshire	132	3	-28	
East Renfrewshire	126	-1	-41	
East Dunbartonshire	114	4	41	
Perth and Kinross	110	20	70	
South Lanarkshire	91	4	12	
Stirling	80	-6	10	
North Lanarkshire	83	-1	-1	
West Lothian	87	7	52	

	Total new cases in the week, per 100,000 population	Change since previous day	Change since previous week	Weekly Trend (30-May 06-Jun)
North Ayrshire	72	-6	3	
West Dunbartonshire	81	15	51	
East Lothian	74	7	47	
Falkirk	52	1	9	
Fife	54	3	9	
Aberdeen City	40	1	24	
Scottish Borders	34	4	29	
Highland	25	-3	-8	
Inverclyde	24	1	-9	
Dumfries and Galloway	24	5	16	
Argyll and Bute	20	1	6	
Aberdeenshire	22	4	14	
Shetland Islands	17	0	17	
Moray	16	-1	6	
Orkney Islands	9	0	9	
Na h-Eileanan Siar	7	0	7	
Scotland	100	3	33	

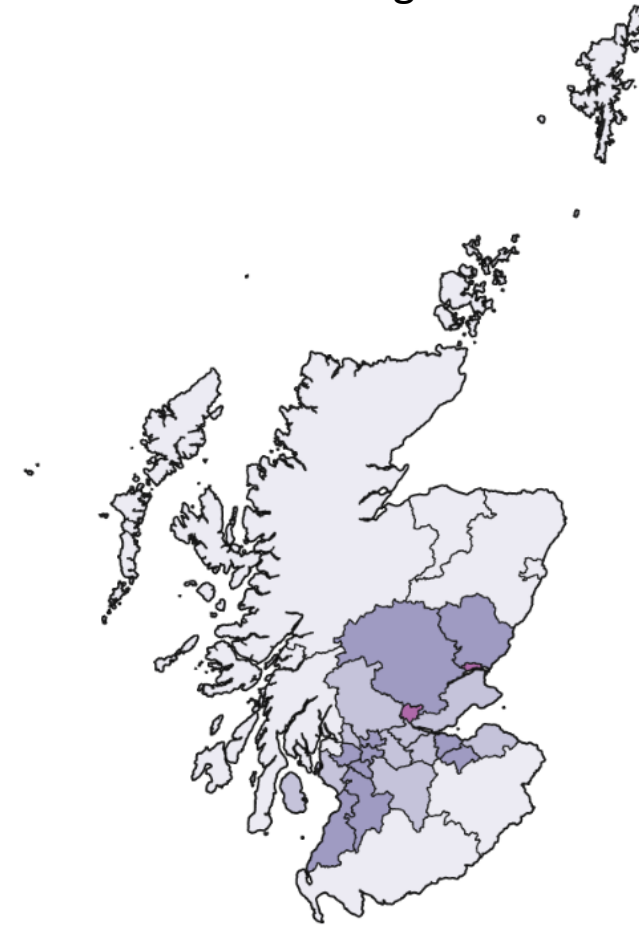
7 Day Cases per 100,000 population by Local Authority

OFFICIAL
SENSITIVE

Week ending 30-May



Week ending 6-June



Glasgow

7 day positive rate per 100,000 population

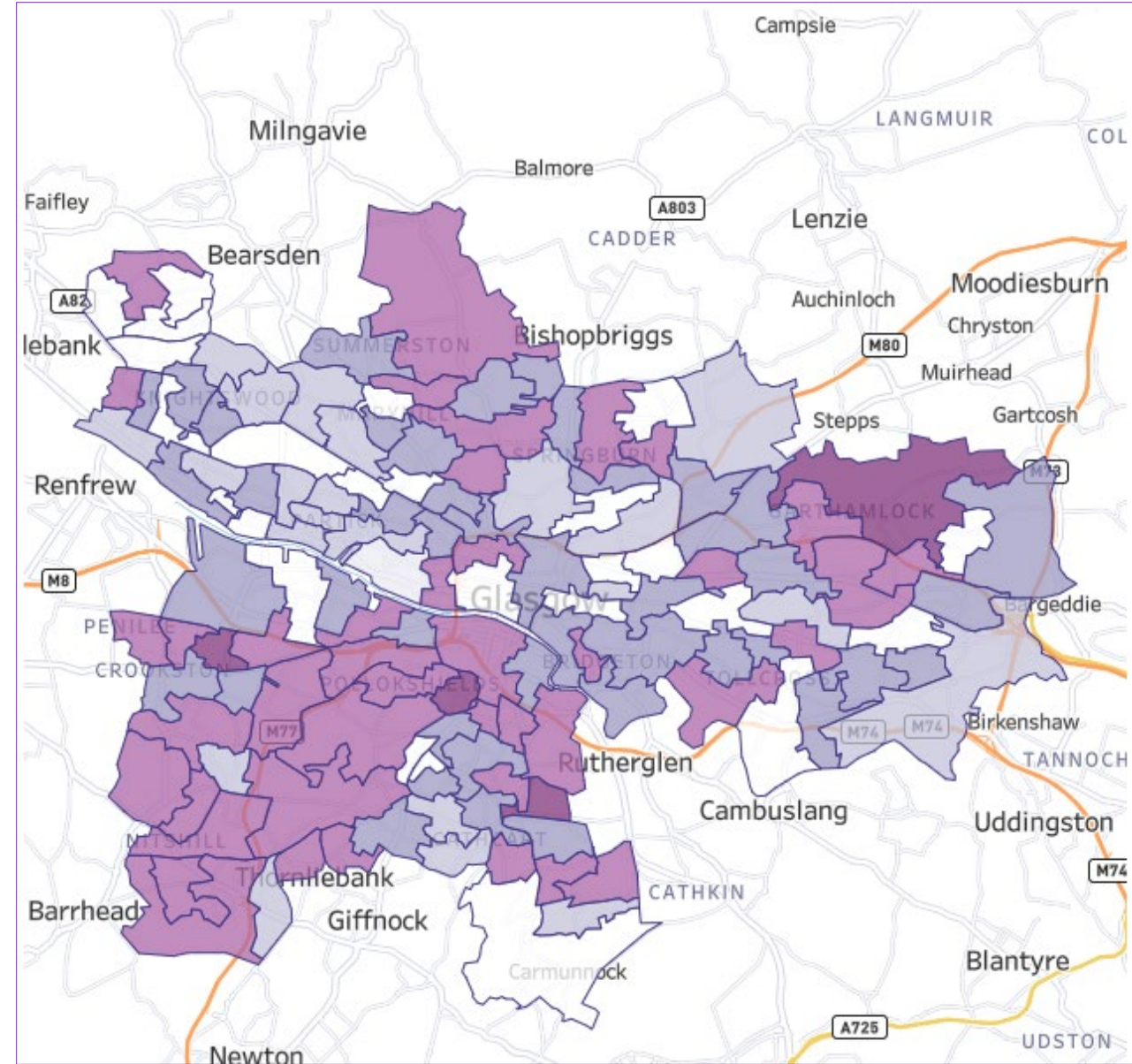
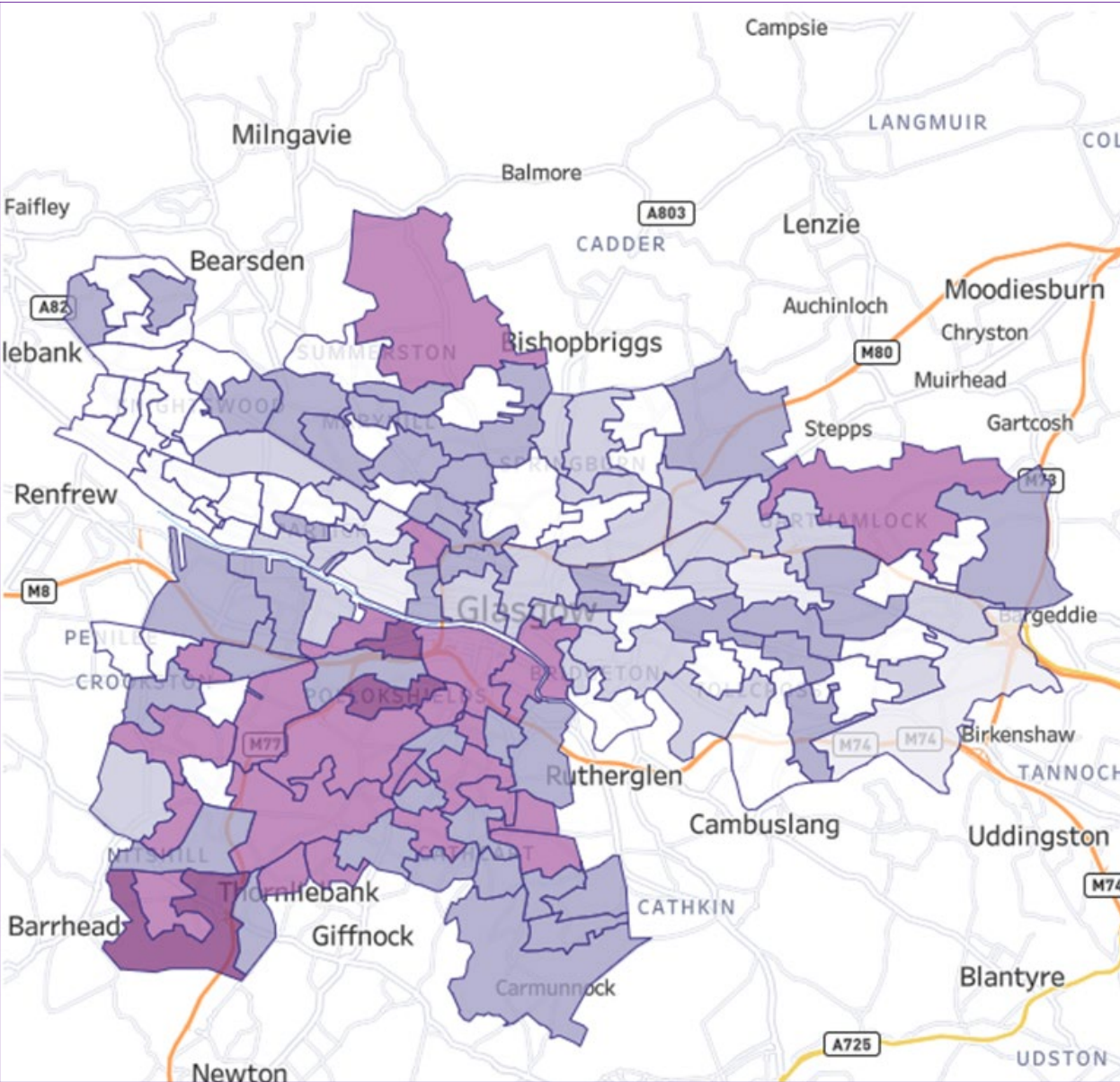


* For neighbourhoods with fewer than 3 cases, we do not show a 7 day rate to protect patient confidentiality.

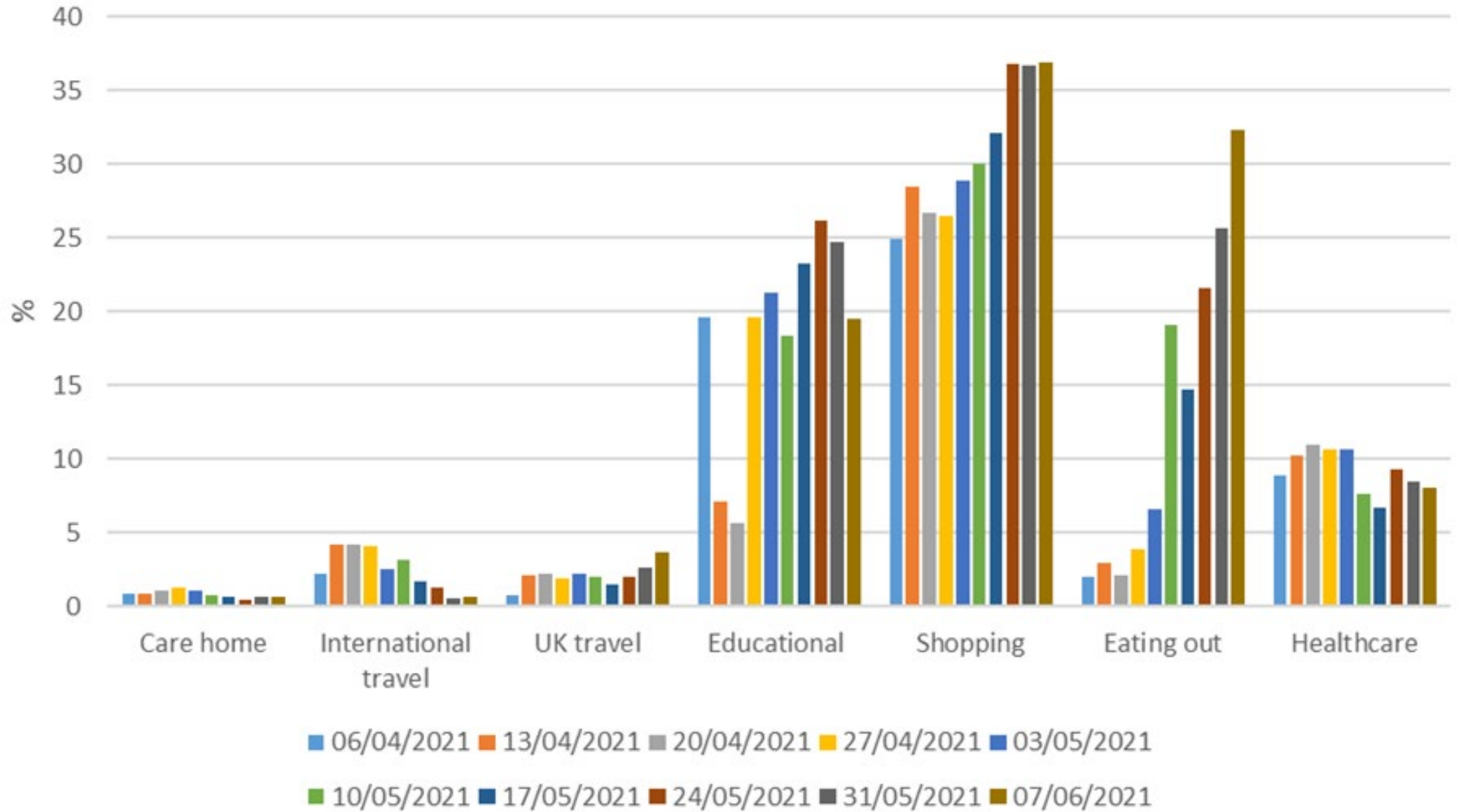
OFFICIAL
SENSITIVE

29 May 2021

5 June 2021



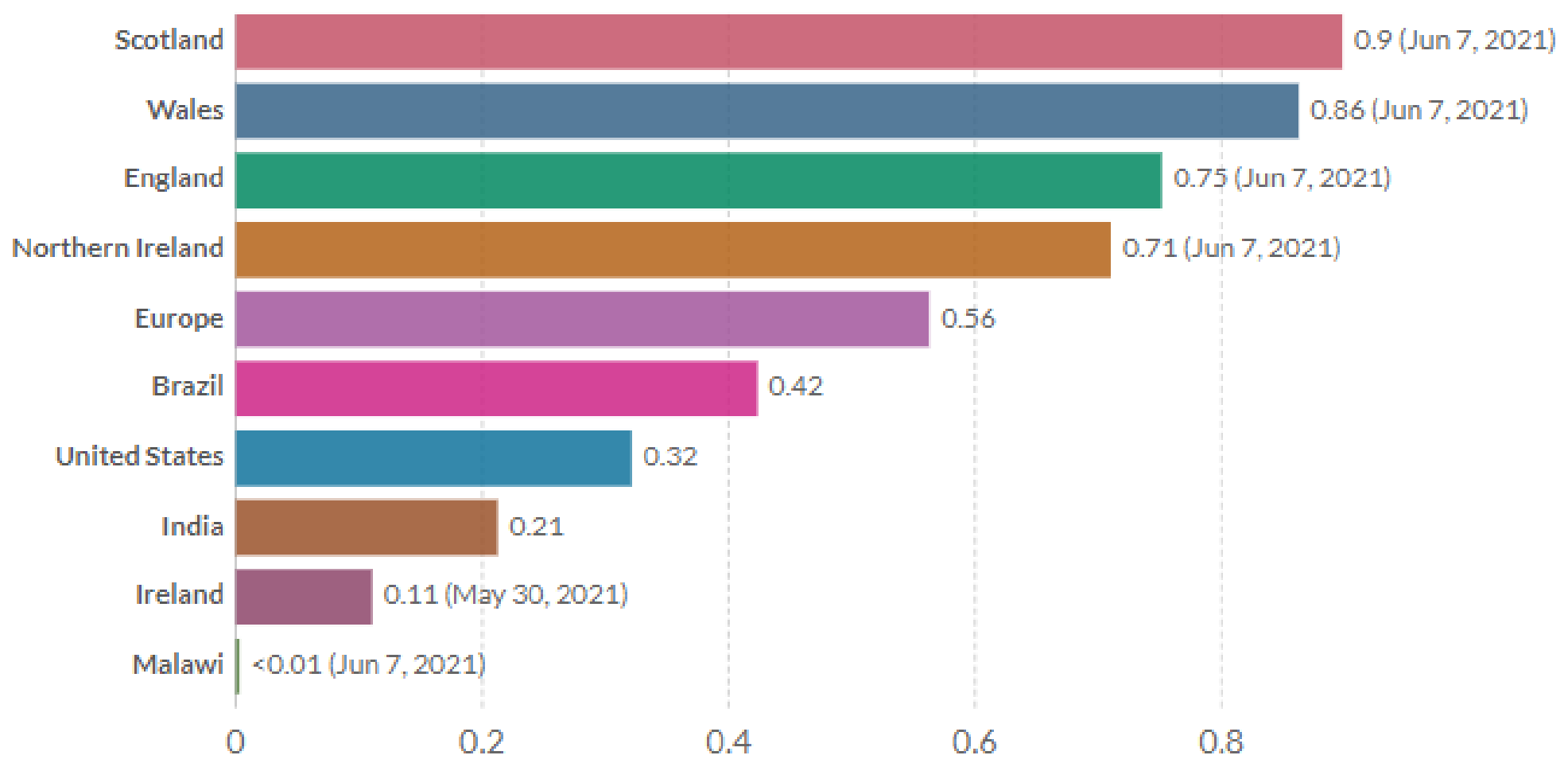
Reported exposures of confirmed cases in week to positive test or symptom onset



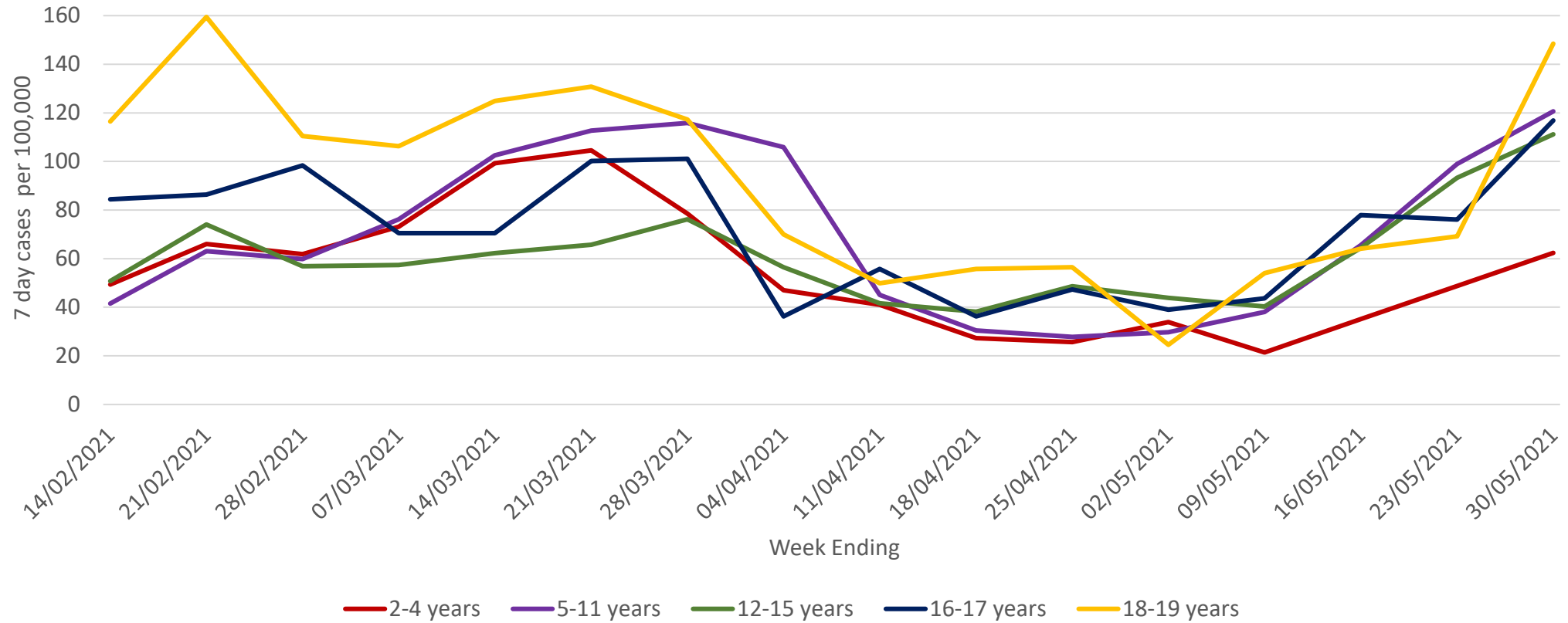
Daily COVID-19 vaccine doses administered per 100 people, Jun 8, 2021

Shown is the rolling 7-day average per 100 people in the total population. This is counted as a single dose, and may not equal the total number of people vaccinated, depending on the specific dose regime (e.g. people receive multiple doses).

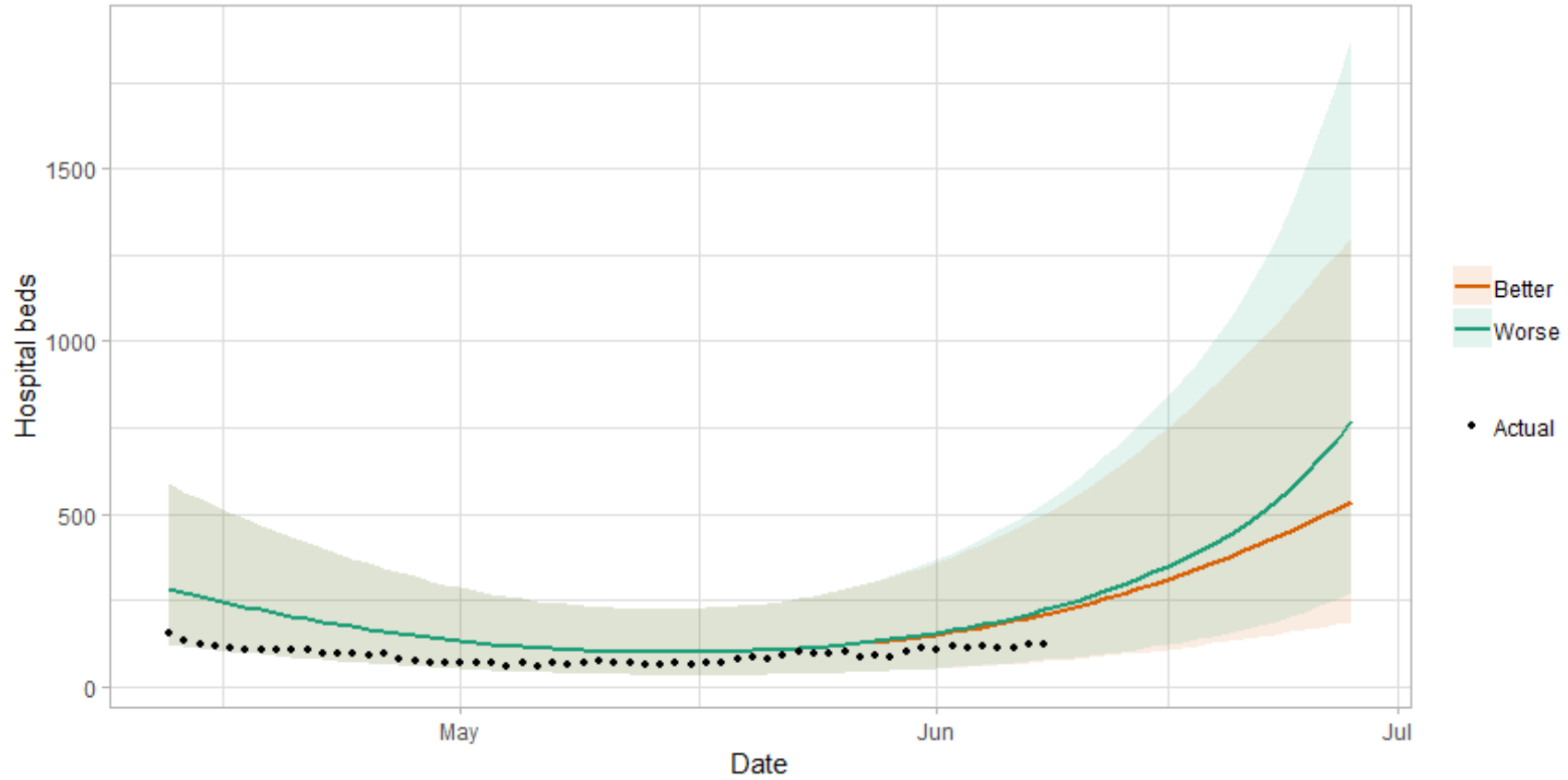
LINEAR LOG [+ Add country](#)



7-day case rate of children and young people per 100,000 (PHS)

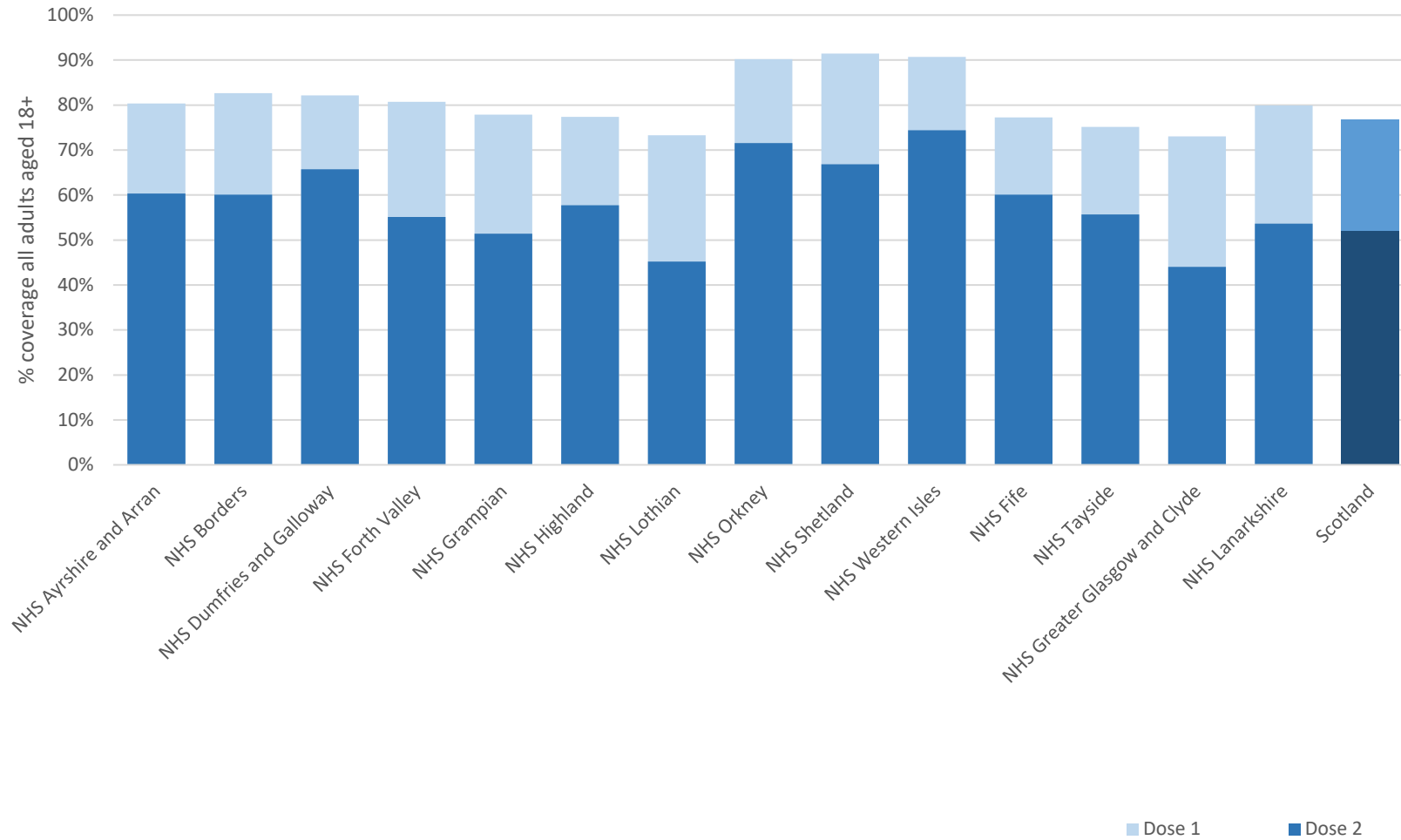


Medium term projections of modelled Hospital bed use for Covid patients



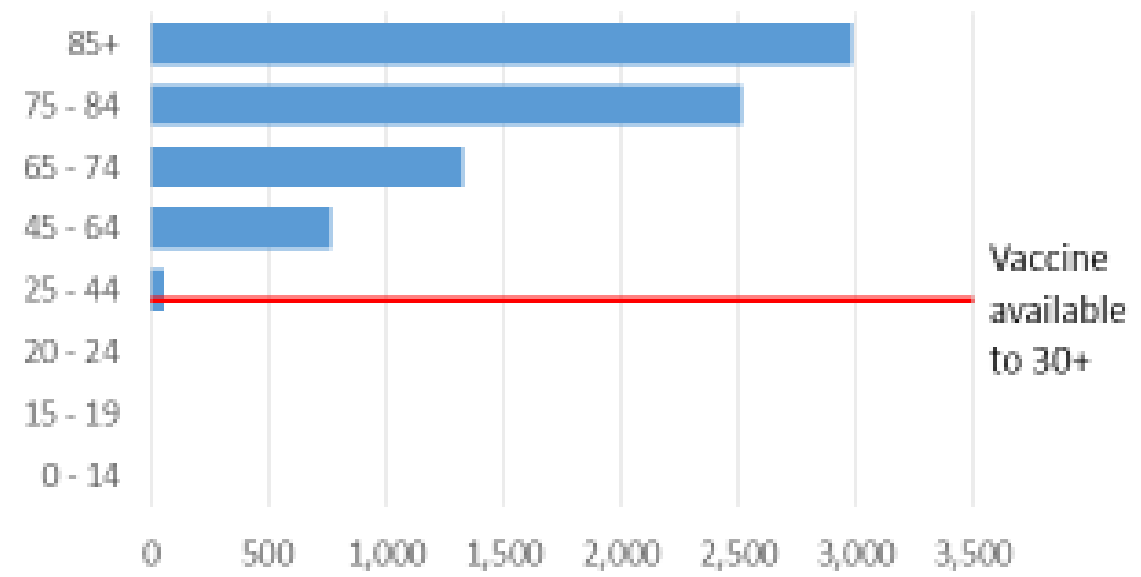
% Coverage by dose and by Health Board

OFFICIAL
SENSITIVE

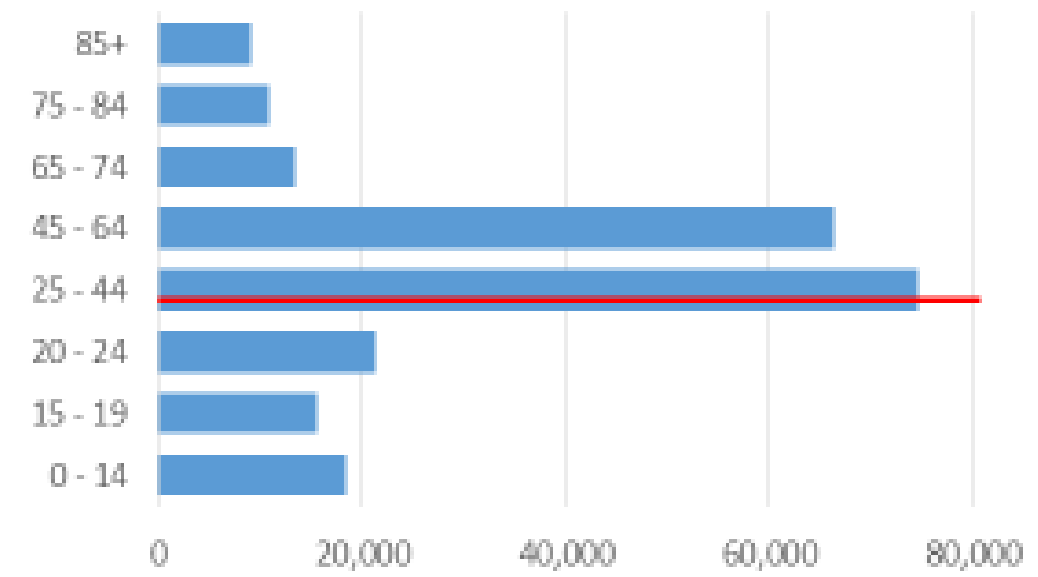


The age distribution of COVID-19 deaths and cases in Scotland since the start of the pandemic

Total number of COVID-19 deaths in Scotland by specimen date, to 16 May 2021

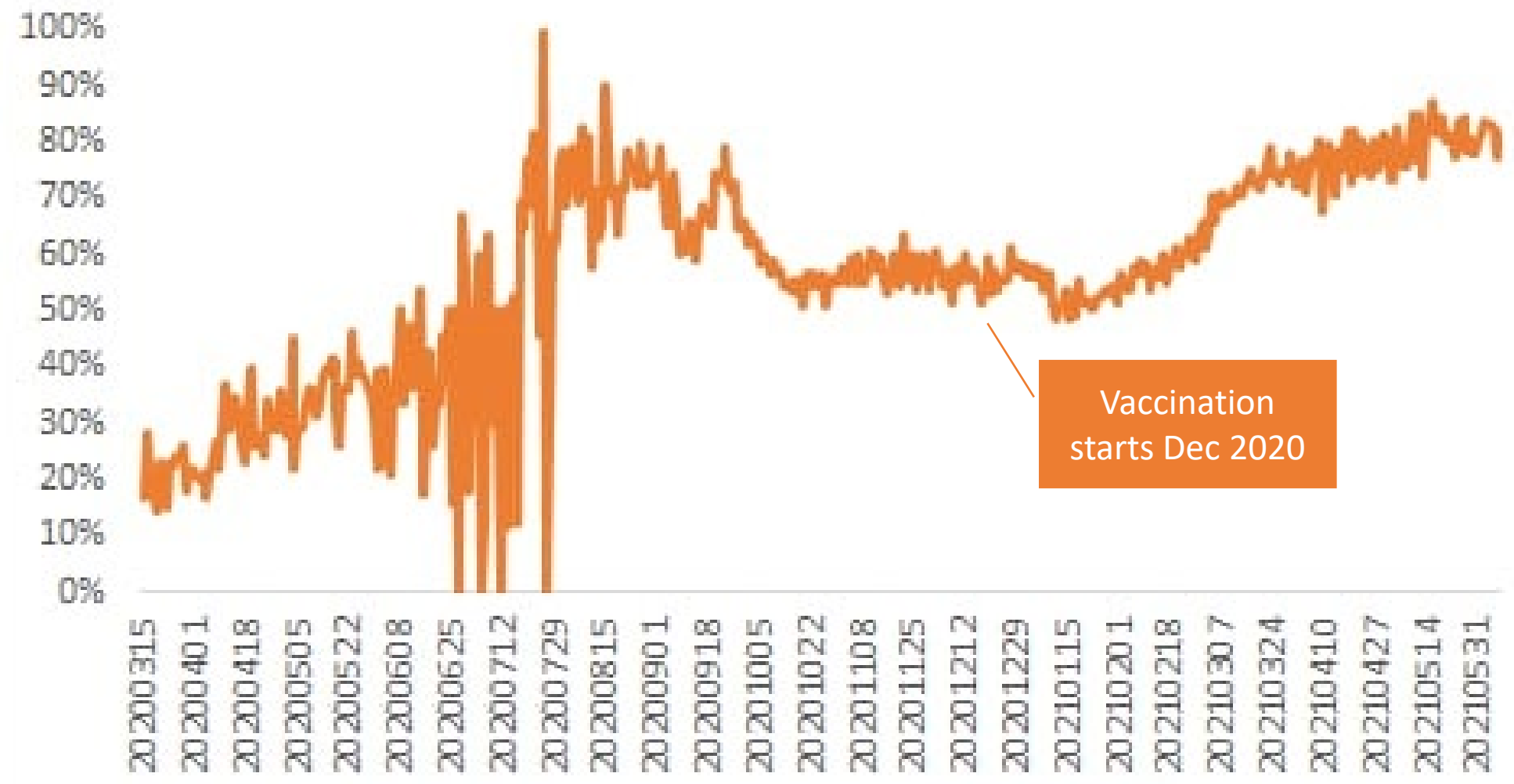


Total number of COVID-19 cases in Scotland by specimen date, to 16 May 2021



Source: [COVID-19 Daily Dashboard - PHS COVID-19 | Tableau Public](#)

Percent of cases less than 45 years of age



Vaccination starts Dec 2020

Chart: Public Health Scotland

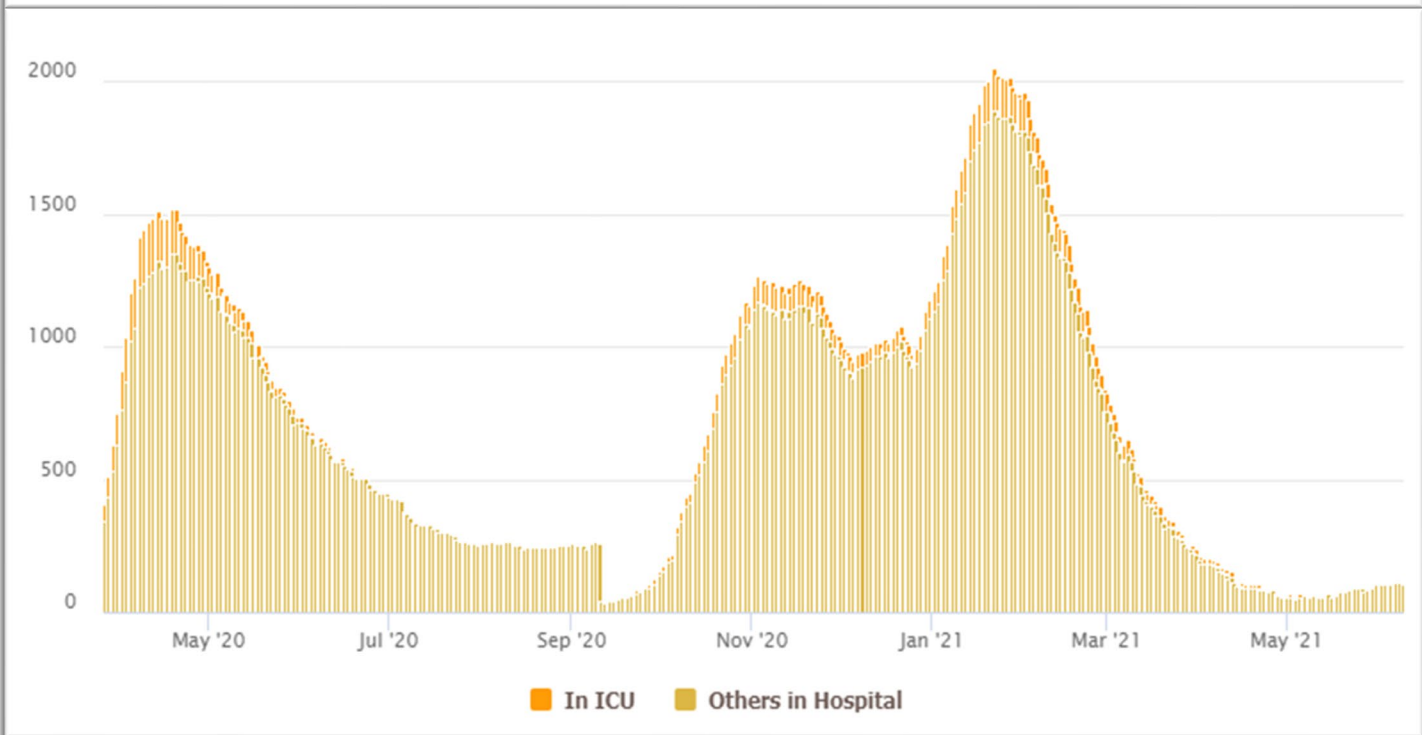
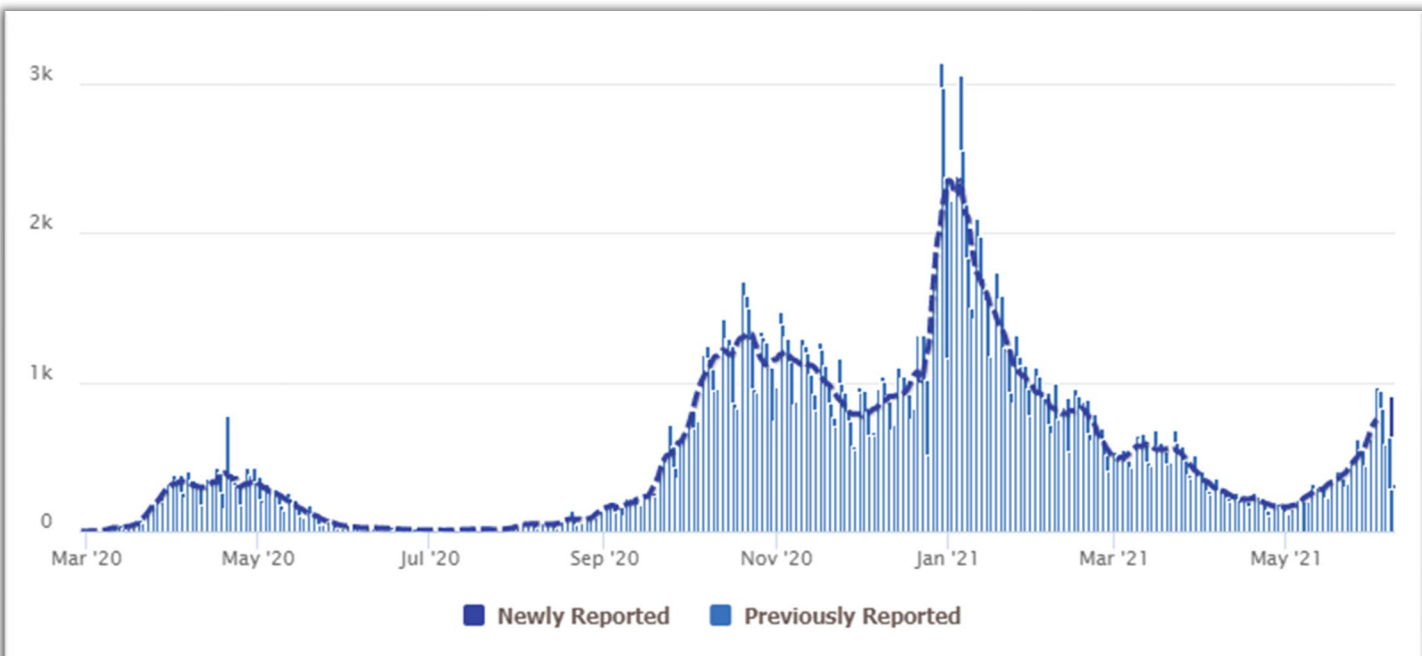


Chart: Travelling Tabby

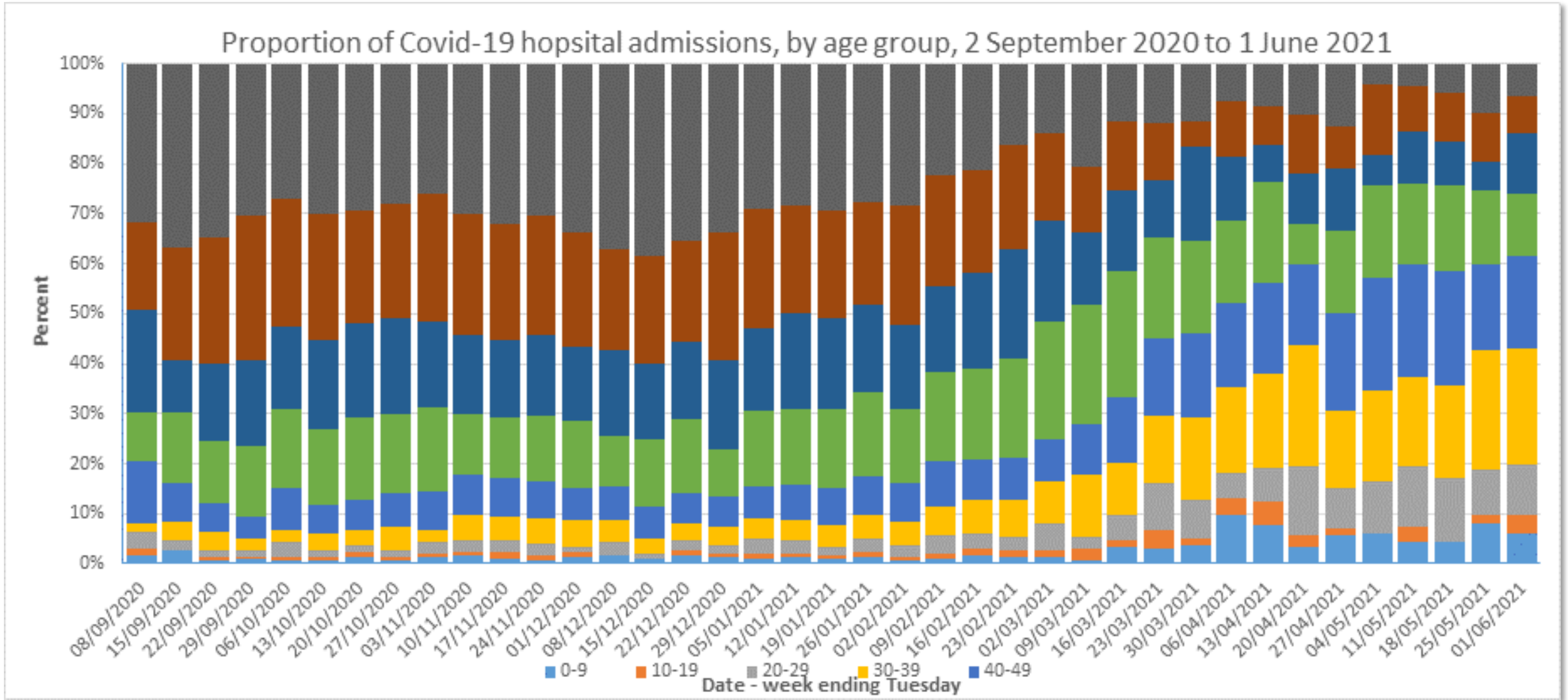


Chart: Public Health Scotland

Estimated proportion of people in the community population with self-reported long COVID in the UK: four-week period ending 2 May 2021

