

Inspection Defect Summary Report



Defect Reference	Start m	End m	Item Type	Item Detail	Defect Category	Required Completion Date	Current Status	Completion Date	Location Description
14220/50 : WITH: JC T 12 ENTRY SLIP TO OFF SLIP AT JCT 13									
Safety Inspection of M8 Glasgow East V1 on 04 August 2020									
<i>No defects recorded</i>									
Safety Inspection of M8 Glasgow East V1 on 11 August 2020									
<i>No defects recorded</i>									
Night Safety Inspection 28 day - Signs and lighting of M8 Glasgow East V1 on 11 August 2020									
<i>No defects recorded</i>									
Safety Inspection of NSW M8 Polmadie Safety Inspection Route on 29 September 2020									
<i>No defects recorded</i>									
12 Month Manufacturers Checks - Weather Stations of NSW Weather Stations on 30 September 2020									
<i>No defects recorded</i>									
24 Month Manufacturers Checks - Weather Stations of NSW Weather Stations on 30 September 2020									
<i>No defects recorded</i>									
Safety Patrol of NSW M8 Polmadie Winter Safety Patrol Route on 03 October 2020									
<i>No defects recorded</i>									
Safety Inspection of NSW M8 Polmadie Safety Inspection Route on 06 October 2020									
<i>No defects recorded</i>									
Night Safety Inspection 14 day - Signs and lighting of NSW M8 Polmadie Night Inspection Route on 06 October 2020									
<i>No defects recorded</i>									
Safety Patrol of NSW M8 Polmadie Winter Safety Patrol Route on 10 October 2020									
<i>No defects recorded</i>									
Safety Inspection of NSW M8 Polmadie Safety Inspection Route on 13 October 2020									
<i>No defects recorded</i>									
Safety Patrol of NSW M8 Polmadie Winter Safety Patrol Route on 17 October 2020									
<i>No defects recorded</i>									
Safety Inspection of NSW M8 Polmadie Safety Inspection Route on 20 October 2020									
<i>No defects recorded</i>									
Night Safety Inspection 14 day - Signs and lighting of NSW M8 Polmadie Night Inspection Route on 20 October 2020									
<i>No defects recorded</i>									
Safety Patrol of NSW M8 Polmadie Winter Safety Patrol Route on 24 October 2020									
<i>No defects recorded</i>									
Safety Inspection of NSW M8 Polmadie Safety Inspection Route on 27 October 2020									
<i>No defects recorded</i>									
Safety Patrol of NSW M8 Polmadie Winter Safety Patrol Route on 31 October 2020									
<i>No defects recorded</i>									
Safety Inspection of NSW M8 Polmadie Safety Inspection Route on 03 November 2020									
<i>No defects recorded</i>									



Defect Reference	Start m	End m	Item Type	Item Detail	Defect Category	Required Completion Date	Current Status	Completion Date	Location Description
Night Safety Inspection 14 day - Signs and lighting of NSW M8 Polmadie Night Inspection Route on 04 November 2020									
<i>No defects recorded</i>									
Safety Patrol of NSW M8 Polmadie Winter Safety Patrol Route on 03 October 2020									
<i>No defects recorded</i>									
Safety Inspection of NSW M8 Polmadie Safety Inspection Route on 10 November 2020									
<i>No defects recorded</i>									
Safety Patrol of NSW M8 Polmadie Winter Safety Patrol Route on 14 November 2020									
<i>No defects recorded</i>									
Safety Inspection of NSW M8 Polmadie Safety Inspection Route on 17 November 2020									
<i>No defects recorded</i>									
Night Safety Inspection 14 day - Signs and lighting of NSW M8 Polmadie Night Inspection Route on 17 November 2020									
<i>No defects recorded</i>									
Safety Patrol of NSW M8 Polmadie Winter Safety Patrol Route on 21 November 2020									
<i>No defects recorded</i>									
Safety Inspection of NSW M8 Polmadie Safety Inspection Route on 24 November 2020									
<i>No defects recorded</i>									
Safety Patrol of NSW M8 Polmadie Winter Safety Patrol Route on 28 November 2020									
<i>No defects recorded</i>									
Safety Inspection of NSW M8 Polmadie Safety Inspection Route on 01 December 2020									
<i>No defects recorded</i>									
Night Safety Inspection 14 day - Signs and lighting of NSW M8 Polmadie Night Inspection Route on 01 December 2020									
<i>No defects recorded</i>									
Reactive Defect Recorded 03/12/2020 00:17:11									
D-NSW20237968109	149m	149m	CARRIAGEWAY	Debris in hard shoulder (DBHS)	CAT 1	04/12/2020	Completed Defects	02/12/2020	M8 W/B J12
Safety Patrol of NSW M8 Polmadie Winter Safety Patrol Route on 05 December 2020									
<i>No defects recorded</i>									
Reactive Defect Recorded 06/12/2020 20:23:25									
D-NSW20237968812	181m	181m	REMOVE_ANIMAL	Carcass of dead animal (DEAD)	CAT 1	07/12/2020	Completed Defects	06/12/2020	M8 W/B Jcts 12 - 13 Lane 1
Safety Inspection of NSW M8 Polmadie Safety Inspection Route on 08 December 2020									
<i>No defects recorded</i>									
Safety Patrol of NSW M8 Polmadie Winter Safety Patrol Route on 12 December 2020									
<i>No defects recorded</i>									
Safety Inspection of NSW M8 Polmadie Safety Inspection Route on 15 December 2020									
<i>No defects recorded</i>									
Night Safety Inspection 14 day - Signs and lighting of NSW M8 Polmadie Night Inspection Route on 15 December 2020									
<i>No defects recorded</i>									
Reflective Conspicuity Inspection - Road Studs of NSW M8E Polmadie Detail Inspection Route on 16 December 2020									
<i>No defects recorded</i>									
Safety Patrol of NSW M8 Polmadie Winter Safety Patrol Route on 19 December 2020									
<i>No defects recorded</i>									

Defect Reference	Start m	End m	Item Type	Item Detail	Defect Category	Required Completion Date	Current Status	Completion Date	Location Description
Safety Inspection of NSW M8 Polmadie Safety Inspection Route on 22 December 2020									
<i>No defects recorded</i>									
Safety Patrol of NSW M8 Polmadie Winter Safety Patrol Route on 26 December 2020									
<i>No defects recorded</i>									
Safety Inspection of NSW M8 Polmadie Safety Inspection Route on 29 December 2020									
<i>No defects recorded</i>									
Night Safety Inspection 14 day - Signs and lighting of NSW M8 Polmadie Night Inspection Route on 30 December 2020									
<i>No defects recorded</i>									
Safety Patrol of NSW M8 Polmadie Winter Safety Patrol Route on 02 January 2021									
<i>No defects recorded</i>									
Safety Inspection of NSW M8 Polmadie Safety Inspection Route on 05 January 2021									
<i>No defects recorded</i>									
Reactive Defect Recorded 08/01/2021 14:19:14									
D-NSW21237994518	135m	135m	CARRIAGEWAY	Debris in traffic Lane (DBTL)	CAT 1	19/12/2020	Completed Defects	18/12/2020	M8 w/b j12
Safety Patrol of NSW M8 Polmadie Winter Safety Patrol Route on 09 January 2021									
<i>No defects recorded</i>									
Night Safety Inspection 14 day - Signs and lighting of NSW M8 Polmadie Night Inspection Route on 12 January 2021									
<i>No defects recorded</i>									
Safety Inspection of NSW M8 Polmadie Safety Inspection Route on 12 January 2021									
<i>No defects recorded</i>									
Safety Patrol of NSW M8 Polmadie Winter Safety Patrol Route on 16 January 2021									
<i>No defects recorded</i>									
Safety Inspection of NSW M8 Polmadie Safety Inspection Route on 18 January 2021									
<i>No defects recorded</i>									
Safety Patrol of NSW M8 Polmadie Winter Safety Patrol Route on 23 January 2021									
<i>No defects recorded</i>									
Night Safety Inspection 14 day - Signs and lighting of NSW M8 Polmadie Night Inspection Route (Awaiting Return)									
<i>No defects recorded</i>									
Safety Inspection of NSW M8 Polmadie Safety Inspection Route on 26 January 2021									
<i>No defects recorded</i>									
Safety Patrol of NSW M8 Polmadie Winter Safety Patrol Route on 30 January 2021									
<i>No defects recorded</i>									
Safety Inspection of NSW M8 Polmadie Safety Inspection Route on 02 February 2021									
<i>No defects recorded</i>									
Safety Patrol of NSW M8 Polmadie Winter Safety Patrol Route on 06 February 2021									
<i>No defects recorded</i>									
Night Safety Inspection 14 day - Signs and lighting of NSW M8 Polmadie Night Inspection Route on 09 February 2021									
<i>No defects recorded</i>									
Safety Inspection of NSW M8 Polmadie Safety Inspection Route on 09 February 2021									
<i>No defects recorded</i>									
Safety Patrol of NSW M8 Polmadie Winter Safety Patrol Route on 13 February 2021									
<i>No defects recorded</i>									
Safety Inspection of NSW M8 Polmadie Safety Inspection Route on 16 February 2021									

Defect Reference	Start m	End m	Item Type	Item Detail	Defect Category	Required Completion Date	Current Status	Completion Date	Location Description
<i>No defects recorded</i>									
Safety Patrol of NSW M8 Polmadie Winter Safety Patrol Route on 20 February 2021									
<i>No defects recorded</i>									
Night Safety Inspection 14 day - Signs and lighting of NSW M8 Polmadie Night Inspection Route on 23 February 2021									
<i>No defects recorded</i>									
Safety Inspection of NSW M8 Polmadie Safety Inspection Route on 23 February 2021									
<i>No defects recorded</i>									
Visual Inspection During Daylight - Road Studs of NSW M8E Polmadie Detail Inspection Route on 26 February 2021									
<i>No defects recorded</i>									
Visual Inspection During Daylight - Road Markings of NSW M8E Polmadie Detail Inspection Route on 26 February 2021									
NSW77-612192-3	318m	400m	ROAD_MARKINGS _LONG	Wear (for example erosion) (WEAR)	CAT 2		Cat 2 Awaiting Action		
Safety Patrol of NSW M8 Polmadie Winter Safety Patrol Route on 27 February 2021									
<i>No defects recorded</i>									
Safety Inspection of NSW M8 Polmadie Safety Inspection Route on 02 March 2021									
<i>No defects recorded</i>									
Safety Patrol of NSW M8 Polmadie Winter Safety Patrol Route on 06 March 2021									
<i>No defects recorded</i>									
Night Safety Inspection 14 day - Signs and lighting of NSW M8 Polmadie Night Inspection Route on 09 March 2021									
<i>No defects recorded</i>									
Safety Inspection of NSW M8 Polmadie Safety Inspection Route on 09 March 2021									
<i>No defects recorded</i>									
Reactive Defect Recorded 12/03/2021 10:06:53									
D-NSW21238019548	1m	1,000m	EMBANKMENTS_A ND_CUTTINGS	Detritus / Refuse (DETR)	CAT 1	09/04/2021	Completed Defects	20/05/2021	M8 JCT 12,13,14,15 & 16
Safety Patrol of NSW M8 Polmadie Winter Safety Patrol Route on 13 March 2021									
<i>No defects recorded</i>									
Safety Inspection of NSW M8 Polmadie Safety Inspection Route on 16 March 2021									
<i>No defects recorded</i>									
Safety Patrol of NSW M8 Polmadie Winter Safety Patrol Route on 20 March 2021									
<i>No defects recorded</i>									
Night Safety Inspection 14 day - Signs and lighting of NSW M8 Polmadie Night Inspection Route on 23 March 2021									
<i>No defects recorded</i>									
Safety Inspection of NSW M8 Polmadie Safety Inspection Route on 23 March 2021									
<i>No defects recorded</i>									
Safety Patrol of NSW M8 Polmadie Winter Safety Patrol Route on 27 March 2021									
<i>No defects recorded</i>									
Safety Inspection of NSW M8 Polmadie Safety Inspection Route on 30 March 2021									
<i>No defects recorded</i>									
Visual Inspection During Darkness - Road Markings of NSW M8E Polmadie Detail Inspection Route on 31 March 2021									

Defect Reference	Start m	End m	Item Type	Item Detail	Defect Category	Required Completion Date	Current Status	Completion Date	Location Description
NSW77-607744-10	100m	350m	ROAD_MARKINGS _LONG	Wear (for example erosion) (WEAR)	CAT 2		Cat 2 Awaiting Action		
Safety Patrol of NSW M8 Polmadie Summer Safety Patrol Route on 03 April 2021 No defects recorded									
Safety Inspection of NSW M8 Polmadie Safety Inspection Route on 06 April 2021 No defects recorded									
Safety Patrol of NSW M8 Polmadie Summer Safety Patrol Route on 10 April 2021 No defects recorded									
Safety Inspection of NSW M8 Polmadie Safety Inspection Route on 13 April 2021 No defects recorded									
Safety Patrol of NSW M8 Polmadie Summer Safety Patrol Route on 17 April 2021 No defects recorded									
Night Safety Inspection 28 day - Signs and lighting of NSW M8 Polmadie Night Inspection Route on 20 April 2021 No defects recorded									
Safety Inspection of NSW M8 Polmadie Safety Inspection Route on 20 April 2021 No defects recorded									
Safety Patrol of NSW M8 Polmadie Summer Safety Patrol Route on 24 April 2021 No defects recorded									
Safety Inspection of NSW M8 Polmadie Safety Inspection Route on 27 April 2021 No defects recorded									
Safety Patrol of NSW M8 Polmadie Summer Safety Patrol Route on 01 May 2021 No defects recorded									
Safety Inspection of NSW M8 Polmadie Safety Inspection Route on 04 May 2021 No defects recorded									
Safety Patrol of NSW M8 Polmadie Summer Safety Patrol Route on 08 May 2021 No defects recorded									
Safety Inspection of NSW M8 Polmadie Safety Inspection Route on 11 May 2021 No defects recorded									
Safety Patrol of NSW M8 Polmadie Summer Safety Patrol Route on 15 May 2021 No defects recorded									
Night Safety Inspection 28 day - Signs and lighting of NSW M8 Polmadie Night Inspection Route on 18 May 2021									
NSW76-651888-238126025	313m	0m	LIGHTING_POINT	No electricity supply (NOSP)	CAT 1	15/06/2021	Completed Defects	12/07/2022	m8 eastbound j13 onslip nearside
Safety Inspection of NSW M8 Polmadie Safety Inspection Route on 18 May 2021 No defects recorded									
Safety Patrol of NSW M8 Polmadie Summer Safety Patrol Route on 22 May 2021 No defects recorded									
Safety Inspection of NSW M8 Polmadie Safety Inspection Route on 25 May 2021 No defects recorded									
Safety Patrol of NSW M8 Polmadie Summer Safety Patrol Route on 29 May 2021 No defects recorded									
Safety Inspection of NSW M8 Polmadie Safety Inspection Route on 01 June 2021									



Defect Reference	Start m	End m	Item Type	Item Detail	Defect Category	Required Completion Date	Current Status	Completion Date	Location Description
<i>No defects recorded</i>									
Safety Patrol of NSW M8 Polmadie Summer Safety Patrol Route on 05 June 2021									
<i>No defects recorded</i>									
Safety Inspection of NSW M8 Polmadie Safety Inspection Route on 08 June 2021									
<i>No defects recorded</i>									
Safety Patrol of NSW M8 Polmadie Summer Safety Patrol Route on 12 June 2021									
<i>No defects recorded</i>									
Night Safety Inspection 28 day - Signs and lighting of NSW M8 Polmadie Night Inspection Route on 15 June 2021									
<i>No defects recorded</i>									
Safety Inspection of NSW M8 Polmadie Safety Inspection Route on 15 June 2021									
<i>No defects recorded</i>									
Detailed Inspection TEMPLATE of NSW M8E Polmadie Detail Inspection Route on 27 May 2021									
NSW92-650032-563	262m	312m	CARRIAGEWAY	Bituminous surfacing fretting (BFRT)	CAT 2		Cat 2 Awaiting Action		
NSW92-650032-557	8m	48m	CARRIAGEWAY	Bituminous surfacing fretting (BFRT)	CAT 2		Cat 2 Awaiting Action		
NSW92-650032-561	232m	0m	CABINET	Physical condition of cabinet (PHCD)	CAT 2		Cat 2 Awaiting Action		
NSW92-650032-562	246m	0m	TRAFFIC_SIGNS	Physical condition of post (COPT)	CAT 2		Cat 2 Awaiting Action		
NSW92-650032-564	420m	0m	TRAFFIC_SIGNS	Dirty sign (DIRT)	CAT 2		Cat 2 Awaiting Action		
Annual Detailed Inspection - Carriageways of NSW M8E Polmadie Detail Inspection Route									
<i>No defects recorded</i>									
Annual Detailed Inspection - Drainage Grips of NSW M8E Polmadie Detail Inspection Route									
<i>No defects recorded</i>									
CR Detailed Inspection - Covers, Gratings and Frames of NSW M8E Polmadie Detail Inspection Route									
<i>No defects recorded</i>									
CR Detailed Inspection - Filter Drains and Soakaways of NSW M8E Polmadie Detail Inspection Route									
<i>No defects recorded</i>									
CR Detailed Inspection - Carriageways of NSW M8E Polmadie Detail Inspection Route									
<i>No defects recorded</i>									
CR Detailed Inspection - Kerbs, Channels, Edgings of NSW M8E Polmadie Detail Inspection Route									
<i>No defects recorded</i>									
CR Detailed Inspection - Carriageways of NSW M8E Polmadie Detail Inspection Route									
<i>No defects recorded</i>									
Detailed Inspection - All other Footways of NSW M8E Polmadie Detail Inspection Route									
<i>No defects recorded</i>									
Detailed Inspection - All signs of NSW M8E Polmadie Detail Inspection Route									

Defect Reference	Start m	End m	Item Type	Item Detail	Defect Category	Required Completion Date	Current Status	Completion Date	Location Description
<i>No defects recorded</i>									
Detailed Inspection - Covers, Gratings and Frames of NSW M8E Polmadie Detail Inspection Route									
<i>No defects recorded</i>									
Detailed Inspection - Ditches of NSW M8E Polmadie Detail Inspection Route									
<i>No defects recorded</i>									
Detailed Inspection - Fences, Walls, Screens etc of NSW M8E Polmadie Detail Inspection Route									
<i>No defects recorded</i>									
Detailed Inspection - Filter Drains and Soakaways of NSW M8E Polmadie Detail Inspection Route									
<i>No defects recorded</i>									
Detailed Inspection - Geotechnical Assets of NSW M8E Polmadie Detail Inspection Route									
<i>No defects recorded</i>									
Detailed Inspection - Kerbs, Channels, Edgings of NSW M8E Polmadie Detail Inspection Route									
<i>No defects recorded</i>									
Detailed Inspection - Linear Drainage Systems of NSW M8E Polmadie Detail Inspection Route									
<i>No defects recorded</i>									
Detailed Inspection - Node Markers of NSW M8E Polmadie Detail Inspection Route									
<i>No defects recorded</i>									
Detailed Inspection - Pedestrian Restraint Systems of NSW M8E Polmadie Detail Inspection Route									
<i>No defects recorded</i>									
CR Detailed Inspection - Carriageways of NSW M8E Polmadie Detail Inspection Route									
<i>No defects recorded</i>									
Safety Patrol of NSW M8 Polmadie Summer Safety Patrol Route on 19 June 2021									
<i>No defects recorded</i>									
Safety Inspection of NSW M8 Polmadie Safety Inspection Route on 22 June 2021									
<i>No defects recorded</i>									
Safety Inspection of NSW M8 Polmadie Safety Inspection Route on 29 June 2021									
<i>No defects recorded</i>									
Detailed Inspection TEMPLATE of NSW M8E Polmadie Detail Inspection Route on 30 June 2021									
<i>No defects recorded</i>									
Detailed Inspection growing season - Grassed Areas of NSW M8E Polmadie Detail Inspection Route									
<i>No defects recorded</i>									
Detailed Inspection - Bulb and Wildflower Areas of NSW M8E Polmadie Detail Inspection Route									
<i>No defects recorded</i>									
Detailed Inspection - Scrub, shrub and hedges of NSW M8E Polmadie Detail Inspection Route									
<i>No defects recorded</i>									
Detailed Inspection - Invasive Species of NSW M8E Polmadie Detail Inspection Route									
<i>No defects recorded</i>									
Detailed Inspection - Woodland areas and Trees of NSW M8E Polmadie Detail Inspection Route									
<i>No defects recorded</i>									
Safety Inspection of NSW M8 Polmadie Safety Inspection Route on 06 July 2021									
<i>No defects recorded</i>									
Safety Patrol of NSW M8 Polmadie Summer Safety Patrol Route on 07 July 2021									
<i>No defects recorded</i>									
Safety Patrol of NSW M8 Polmadie Summer Safety Patrol Route on 07 July 2021									
<i>No defects recorded</i>									

Defect Reference	Start m	End m	Item Type	Item Detail	Defect Category	Required Completion Date	Current Status	Completion Date	Location Description
Reactive Defect Recorded 09/07/2021 22:10:33									
D-NSW21238215880	46m	46m	CARRIAGEWAY	Debris in hard shoulder (DBHS)	CAT 1	10/07/2021	Completed Defects	09/07/2021	M8 - Junction 12 WB
Safety Patrol of NSW M8 Polmadie Summer Safety Patrol Route on 10 July 2021									
<i>No defects recorded</i>									
Night Safety Inspection 28 day - Signs and lighting of NSW M8 Polmadie Night Inspection Route on 13 July 2021									
<i>No defects recorded</i>									
Safety Inspection of NSW M8 Polmadie Safety Inspection Route on 13 July 2021									
<i>No defects recorded</i>									
Safety Patrol of NSW M8 Polmadie Summer Safety Patrol Route on 17 July 2021									
<i>No defects recorded</i>									
Safety Inspection of NSW M8 Polmadie Safety Inspection Route on 20 July 2021									
<i>No defects recorded</i>									
Safety Patrol of NSW M8 Polmadie Summer Safety Patrol Route on 24 July 2021									
<i>No defects recorded</i>									
Safety Inspection of NSW M8 Polmadie Safety Inspection Route on 27 July 2021									
<i>No defects recorded</i>									
Safety Patrol of NSW M8 Polmadie Summer Safety Patrol Route on 31 July 2021									
<i>No defects recorded</i>									
Safety Inspection of NSW M8 Polmadie Safety Inspection Route on 03 August 2021									
<i>No defects recorded</i>									
Safety Patrol of NSW M8 Polmadie Summer Safety Patrol Route on 07 August 2021									
<i>No defects recorded</i>									
Night Safety Inspection 28 day - Signs and lighting of NSW M8 Polmadie Night Inspection Route on 10 August 2021									
<i>No defects recorded</i>									
Safety Inspection of NSW M8 Polmadie Safety Inspection Route on 10 August 2021									
<i>No defects recorded</i>									
Safety Patrol of NSW M8 Polmadie Summer Safety Patrol Route on 14 August 2021									
<i>No defects recorded</i>									
Safety Inspection of NSW M8 Polmadie Safety Inspection Route on 17 August 2021									
<i>No defects recorded</i>									
Safety Patrol of NSW M8 Polmadie Summer Safety Patrol Route on 21 August 2021									
<i>No defects recorded</i>									
Safety Inspection of NSW M8 Polmadie Safety Inspection Route on 24 August 2021									
<i>No defects recorded</i>									
Safety Patrol of NSW M8 Polmadie Summer Safety Patrol Route on 28 August 2021									
<i>No defects recorded</i>									
Reactive Defect Recorded 31/08/2021 19:08:21									
D-NSW21238324582	39m	39m	CARRIAGEWAY	Debris in hard shoulder (DBHS)	CAT 1	01/09/2021	Completed Defects	31/08/2021	M8 W/B J12 H/S
Safety Inspection of NSW M8 Polmadie Safety Inspection Route on 31 August 2021									
<i>No defects recorded</i>									

Defect Reference	Start m	End m	Item Type	Item Detail	Defect Category	Required Completion Date	Current Status	Completion Date	Location Description
Safety Patrol of NSW M8 Polmadie Summer Safety Patrol Route on 04 September 2021									
<i>No defects recorded</i>									
Reactive Defect Recorded 06/09/2021 07:16:34									
D-NSW21238345780	35m	35m	REMOVE_ANIMAL	Carcass of dead animal (DEAD)	CAT 1	06/09/2021	Completed Defects	05/09/2021	M8 J12 w/b
Night Safety Inspection 28 day - Signs and lighting of NSW M8 Polmadie Night Inspection Route on 07 September 2021									
<i>No defects recorded</i>									
Safety Inspection of NSW M8 Polmadie Safety Inspection Route on 07 September 2021									
<i>No defects recorded</i>									
Reactive Defect Recorded 08/09/2021 21:15:43									
D-NSW21238362466	186m	186m	CARRIAGEWAY	Debris in traffic Lane (DBTL)	CAT 1	09/09/2021	Completed Defects	08/09/2021	M8 W/B J12
12 Month Manufacturers Checks - Weather Stations of NSW Weather Stations on 03 June 2021									
<i>No defects recorded</i>									
Safety Patrol of NSW M8 Polmadie Summer Safety Patrol Route on 11 September 2021									
<i>No defects recorded</i>									
Safety Inspection of NSW M8 Polmadie Safety Inspection Route on 14 September 2021									
<i>No defects recorded</i>									
Safety Patrol of NSW M8 Polmadie Summer Safety Patrol Route on 18 September 2021									
<i>No defects recorded</i>									
Safety Inspection of NSW M8 Polmadie Safety Inspection Route on 21 September 2021									
<i>No defects recorded</i>									
Safety Patrol of NSW M8 Polmadie Summer Safety Patrol Route on 25 September 2021									
<i>No defects recorded</i>									
Safety Inspection of NSW M8 Polmadie Safety Inspection Route on 28 September 2021									
<i>No defects recorded</i>									
Safety Patrol of NSW M8 Polmadie Winter Safety Patrol Route on 02 October 2021									
<i>No defects recorded</i>									
Safety Inspection of NSW M8 Polmadie Safety Inspection Route on 05 October 2021									
<i>No defects recorded</i>									
Reactive Defect Recorded 06/10/2021 11:16:16									
D-NSW21238416511	0m	0m	WEATHER_STATIO N	Other (OTHR)	CAT 1	03/11/2021	Completed Defects	18/10/2021	M8 W/B Jct 12 On to Jct 13 Off Slip Weather Station (Riddrie)
Night Safety Inspection 14 day - Signs and lighting of NSW M8 Polmadie Night Inspection Route on 05 October 2021									
<i>No defects recorded</i>									
Safety Patrol of NSW M8 Polmadie Winter Safety Patrol Route on 09 October 2021									
<i>No defects recorded</i>									
Safety Inspection of NSW M8 Polmadie Safety Inspection Route on 12 October 2021									
<i>No defects recorded</i>									
Safety Patrol of NSW M8 Polmadie Winter Safety Patrol Route on 16 October 2021									
<i>No defects recorded</i>									
Safety Inspection of NSW M8 Polmadie Safety Inspection Route on 19 October 2021									

Defect Reference	Start m	End m	Item Type	Item Detail	Defect Category	Required Completion Date	Current Status	Completion Date	Location Description
<i>No defects recorded</i>									
Safety Patrol of NSW M8 Polmadie Winter Safety Patrol Route on 23 October 2021									
<i>No defects recorded</i>									
Visual Inspection During Darkness - Road Markings of NSW M8E Polmadie Detail Inspection Route on 25 October 2021									
NSW78-741195-1	85m	175m	ROAD_MARKINGS _LONG	Wear (for example erosion) (WEAR)	CAT 2		Cat 2 Awaiting Action		
Safety Inspection of NSW M8 Polmadie Safety Inspection Route on 26 October 2021									
<i>No defects recorded</i>									
Visual Inspection During Daylight - Road Studs of NSW M8E Polmadie Detail Inspection Route on 27 October 2021									
NSW92-705795-16	16m	66m	ROAD_STUDS	Damaged "catseye" (DAMC)	CAT 2		Cat 2 Awaiting Action		
Visual Inspection During Daylight - Road Markings of NSW M8E Polmadie Detail Inspection Route on 27 October 2021									
NSW95-705796-3	253m	353m	ROAD_MARKINGS _LONG	Wear (for example erosion) (WEAR)	CAT 2		Cat 2 Awaiting Action		
NSW95-705796-1	59m	159m	ROAD_MARKINGS _LONG	Wear (for example erosion) (WEAR)	CAT 2		Cat 2 Awaiting Action		
NSW95-705796-2	162m	262m	ROAD_MARKINGS _LONG	Wear (for example erosion) (WEAR)	CAT 2		Cat 2 Awaiting Action		
Safety Patrol of NSW M8 Polmadie Winter Safety Patrol Route on 30 October 2021									
<i>No defects recorded</i>									
Safety Inspection of NSW M8 Polmadie Safety Inspection Route on 02 November 2021									
<i>No defects recorded</i>									
Night Safety Inspection 14 day - Signs and lighting of NSW M8 Polmadie Night Inspection Route on 02 November 2021									
<i>No defects recorded</i>									
Safety Patrol of NSW M8 Polmadie Winter Safety Patrol Route on 06 November 2021									
<i>No defects recorded</i>									
Safety Inspection of NSW M8 Polmadie Safety Inspection Route on 09 November 2021									
<i>No defects recorded</i>									
Safety Patrol of NSW M8 Polmadie Winter Safety Patrol Route on 13 November 2021									
<i>No defects recorded</i>									
Safety Inspection of NSW M8 Polmadie Safety Inspection Route on 16 November 2021									
<i>No defects recorded</i>									
Night Safety Inspection 14 day - Signs and lighting of NSW M8 Polmadie Night Inspection Route on 16 November 2021									
<i>No defects recorded</i>									
Safety Patrol of NSW M8 Polmadie Winter Safety Patrol Route on 20 November 2021									

Defect Reference	Start m	End m	Item Type	Item Detail	Defect Category	Required Completion Date	Current Status	Completion Date	Location Description
<i>No defects recorded</i>									
Reactive Defect Recorded 23/11/2021 18:47:02									
D-NSW21238467212	0m	0m	CARRIAGEWAY	Debris in traffic Lane (DBTL)	CAT 1	24/11/2021	Completed Defects	23/11/2021	M8(W) J12. on slip.
Safety Inspection of NSW M8 Polmadie Safety Inspection Route on 23 November 2021									
<i>No defects recorded</i>									
Safety Patrol of NSW M8 Polmadie Winter Safety Patrol Route on 27 November 2021									
<i>No defects recorded</i>									
Night Safety Inspection 14 day - Signs and lighting of NSW M8 Polmadie Night Inspection Route on 30 November 2021									
<i>No defects recorded</i>									
Safety Inspection of NSW M8 Polmadie Safety Inspection Route on 30 November 2021									
<i>No defects recorded</i>									
Safety Patrol of NSW M8 Polmadie Winter Safety Patrol Route on 04 December 2021									
<i>No defects recorded</i>									
Safety Inspection of NSW M8 Polmadie Safety Inspection Route on 07 December 2021									
<i>No defects recorded</i>									
Safety Patrol of NSW M8 Polmadie Winter Safety Patrol Route on 10 December 2021									
<i>No defects recorded</i>									
Night Safety Inspection 14 day - Signs and lighting of NSW M8 Polmadie Night Inspection Route on 14 December 2021									
<i>No defects recorded</i>									
Safety Inspection of NSW M8 Polmadie Safety Inspection Route on 14 December 2021									
<i>No defects recorded</i>									
Safety Patrol of NSW M8 Polmadie Winter Safety Patrol Route on 17 December 2021									
<i>No defects recorded</i>									
Safety Inspection of NSW M8 Polmadie Safety Inspection Route on 21 December 2021									
<i>No defects recorded</i>									
Safety Patrol of NSW M8 Polmadie Winter Safety Patrol Route on 24 December 2021									
<i>No defects recorded</i>									
Night Safety Inspection 14 day - Signs and lighting of NSW M8 Polmadie Night Inspection Route on 28 December 2021									
<i>No defects recorded</i>									
Safety Inspection of NSW M8 Polmadie Safety Inspection Route on 28 December 2021									
<i>No defects recorded</i>									
Safety Patrol of NSW M8 Polmadie Winter Safety Patrol Route on 31 December 2021									
<i>No defects recorded</i>									
Safety Inspection of NSW M8 Polmadie Safety Inspection Route on 04 January 2022									
<i>No defects recorded</i>									
Safety Patrol of NSW M8 Polmadie Winter Safety Patrol Route on 07 January 2022									
<i>No defects recorded</i>									
Night Safety Inspection 14 day - Signs and lighting of NSW M8 Polmadie Night Inspection Route on 11 January 2022									
<i>No defects recorded</i>									
Safety Inspection of NSW M8 Polmadie Safety Inspection Route on 11 January 2022									
<i>No defects recorded</i>									
Safety Patrol of NSW M8 Polmadie Winter Safety Patrol Route on 14 January 2022									
<i>No defects recorded</i>									

Defect Reference	Start m	End m	Item Type	Item Detail	Defect Category	Required Completion Date	Current Status	Completion Date	Location Description
Safety Inspection of NSW M8 Polmadie Safety Inspection Route on 18 January 2022									
<i>No defects recorded</i>									
Safety Patrol of NSW M8 Polmadie Winter Safety Patrol Route on 21 January 2022									
<i>No defects recorded</i>									
Night Safety Inspection 14 day - Signs and lighting of NSW M8 Polmadie Night Inspection Route on 25 January 2022									
<i>No defects recorded</i>									
Safety Inspection of NSW M8 Polmadie Safety Inspection Route on 25 January 2022									
<i>No defects recorded</i>									
Safety Patrol of NSW M8 Polmadie Winter Safety Patrol Route on 28 January 2022									
<i>No defects recorded</i>									
Safety Inspection of NSW M8 Polmadie Safety Inspection Route on 01 February 2022									
<i>No defects recorded</i>									
Safety Patrol of NSW M8 Polmadie Winter Safety Patrol Route on 04 February 2022									
<i>No defects recorded</i>									
Night Safety Inspection 14 day - Signs and lighting of NSW M8 Polmadie Night Inspection Route on 31 January 2022									
<i>No defects recorded</i>									
Safety Inspection of NSW M8 Polmadie Safety Inspection Route on 11 February 2022									
<i>No defects recorded</i>									
Safety Patrol of NSW M8 Polmadie Winter Safety Patrol Route on 11 February 2022									
<i>No defects recorded</i>									
Safety Inspection of NSW M8 Polmadie Safety Inspection Route on 15 February 2022									
<i>No defects recorded</i>									
Reactive Defect Recorded 16/02/2022 20:21:40									
D-NSW22238562264	91m	91m	HARDSHOULDER	Flooding (FLOD)	CAT 1	17/02/2022	Completed Defects	16/02/2022	M8 W/B Jct12 H/S
Safety Patrol of NSW M8 Polmadie Winter Safety Patrol Route on 18 February 2022									
<i>No defects recorded</i>									
Night Safety Inspection 14 day - Signs and lighting of NSW M8 Polmadie Night Inspection Route on 22 February 2022									
<i>No defects recorded</i>									
Safety Inspection of NSW M8 Polmadie Safety Inspection Route on 22 February 2022									
<i>No defects recorded</i>									
Safety Patrol of NSW M8 Polmadie Winter Safety Patrol Route on 25 February 2022									
<i>No defects recorded</i>									
Safety Inspection of NSW M8 Polmadie Safety Inspection Route on 01 March 2022									
<i>No defects recorded</i>									
Safety Patrol of NSW M8 Polmadie Winter Safety Patrol Route on 04 March 2022									
<i>No defects recorded</i>									
Safety Inspection of NSW M8 Polmadie Safety Inspection Route on 08 March 2022									
<i>No defects recorded</i>									
Night Safety Inspection 14 day - Signs and lighting of NSW M8 Polmadie Night Inspection Route on 08 March 2022									
<i>No defects recorded</i>									
Safety Patrol of NSW M8 Polmadie Winter Safety Patrol Route on 11 March 2022									
<i>No defects recorded</i>									
Safety Inspection of NSW M8 Polmadie Safety Inspection Route on 15 March 2022									

Defect Reference	Start m	End m	Item Type	Item Detail	Defect Category	Required Completion Date	Current Status	Completion Date	Location Description
<i>No defects recorded</i>									
Safety Patrol of NSW M8 Polmadie Winter Safety Patrol Route on 18 March 2022									
<i>No defects recorded</i>									
Reflective Conspicuity Inspection - Road Studs of NSW M8E Polmadie Detail Inspection Route on 19 March 2022									
NSW82-741196-12	39m	0m	ROAD_STUDS	Missing (MISS)	CAT 2		Cat 2 Awaiting Action		
Visual Inspection During Darkness - Road Markings of NSW M8E Polmadie Detail Inspection Route on 18 March 2022									
NSW82-820978-9	53m	0m	ROAD_MARKINGS _LONG	Wear (for example erosion) (WEAR)	CAT 2		Cat 2 Awaiting Action		
NSW82-820978-10	80m	0m	ROAD_MARKINGS _LONG	Wear (for example erosion) (WEAR)	CAT 2		Cat 2 Awaiting Action		
NSW82-820978-11	280m	0m	ROAD_MARKINGS _LONG	Wear (for example erosion) (WEAR)	CAT 2		Cat 2 Awaiting Action		
NSW82-820978-12	346m	0m	ROAD_MARKINGS _LONG	Wear (for example erosion) (WEAR)	CAT 2		Cat 2 Awaiting Action		
Night Safety Inspection 14 day - Signs and lighting of NSW M8 Polmadie Night Inspection Route on 22 March 2022									
<i>No defects recorded</i>									
Safety Inspection of NSW M8 Polmadie Safety Inspection Route on 22 March 2022									
<i>No defects recorded</i>									
Safety Patrol of NSW M8 Polmadie Winter Safety Patrol Route on 25 March 2022									
<i>No defects recorded</i>									
Safety Inspection of NSW M8 Polmadie Safety Inspection Route on 29 March 2022									
<i>No defects recorded</i>									
Visual Inspection During Daylight - Road Markings of NSW M8E Polmadie Detail Inspection Route on 31 March 2022									
<i>No defects recorded</i>									
Visual Inspection During Daylight - Road Studs of NSW M8E Polmadie Detail Inspection Route on 31 March 2022									
<i>No defects recorded</i>									

Inspection Defect Summary Report



Defect Reference	Start m	End m	Item Type	Item Detail	Defect Category	Required Completion Date	Current Status	Completion Date	Location Description
14225/05 : WITH: WB OFF SLIP TO M80 TO SLIP ON FROM M80									
Safety Inspection of M8 Glasgow East V1 on 04 August 2020									
No defects recorded									
Safety Inspection of M8 Glasgow East V1 on 11 August 2020									
No defects recorded									
Night Safety Inspection 28 day - Signs and lighting of M8 Glasgow East V1 on 11 August 2020									
No defects recorded									
Safety Inspection of NSW M8 Polmadie Safety Inspection Route on 29 September 2020									
No defects recorded									
Safety Patrol of NSW M8 Polmadie Winter Safety Patrol Route on 03 October 2020									
No defects recorded									
Safety Inspection of NSW M8 Polmadie Safety Inspection Route on 06 October 2020									
No defects recorded									
Night Safety Inspection 14 day - Signs and lighting of NSW M8 Polmadie Night Inspection Route on 06 October 2020									
NSW76-606112-237848340	797m	0m	TRAFFIC_SIGNS	Lamp failure (LAMP)	CAT 1	08/10/2020	Completed Defects	07/10/2020	M8 JCT13 FROM M80 W/B
Safety Patrol of NSW M8 Polmadie Winter Safety Patrol Route on 10 October 2020									
No defects recorded									
Safety Inspection of NSW M8 Polmadie Safety Inspection Route on 13 October 2020									
No defects recorded									
Safety Patrol of NSW M8 Polmadie Winter Safety Patrol Route on 17 October 2020									
No defects recorded									
Safety Inspection of NSW M8 Polmadie Safety Inspection Route on 20 October 2020									
No defects recorded									
Night Safety Inspection 14 day - Signs and lighting of NSW M8 Polmadie Night Inspection Route on 20 October 2020									
No defects recorded									
Safety Patrol of NSW M8 Polmadie Winter Safety Patrol Route on 24 October 2020									
No defects recorded									
Safety Inspection of NSW M8 Polmadie Safety Inspection Route on 27 October 2020									
No defects recorded									
Safety Patrol of NSW M8 Polmadie Winter Safety Patrol Route on 31 October 2020									
No defects recorded									
Safety Inspection of NSW M8 Polmadie Safety Inspection Route on 03 November 2020									
No defects recorded									
Night Safety Inspection 14 day - Signs and lighting of NSW M8 Polmadie Night Inspection Route on 04 November 2020									
No defects recorded									

Defect Reference	Start m	End m	Item Type	Item Detail	Defect Category	Required Completion Date	Current Status	Completion Date	Location Description
Safety Patrol of NSW M8 Polmadie Winter Safety Patrol Route on 03 October 2020									
<i>No defects recorded</i>									
Safety Inspection of NSW M8 Polmadie Safety Inspection Route on 10 November 2020									
<i>No defects recorded</i>									
Safety Patrol of NSW M8 Polmadie Winter Safety Patrol Route on 14 November 2020									
<i>No defects recorded</i>									
Safety Inspection of NSW M8 Polmadie Safety Inspection Route on 17 November 2020									
<i>No defects recorded</i>									
Night Safety Inspection 14 day - Signs and lighting of NSW M8 Polmadie Night Inspection Route on 17 November 2020									
<i>No defects recorded</i>									
Safety Patrol of NSW M8 Polmadie Winter Safety Patrol Route on 21 November 2020									
<i>No defects recorded</i>									
Safety Inspection of NSW M8 Polmadie Safety Inspection Route on 24 November 2020									
<i>No defects recorded</i>									
Safety Patrol of NSW M8 Polmadie Winter Safety Patrol Route on 28 November 2020									
<i>No defects recorded</i>									
Safety Inspection of NSW M8 Polmadie Safety Inspection Route on 01 December 2020									
<i>No defects recorded</i>									
Night Safety Inspection 14 day - Signs and lighting of NSW M8 Polmadie Night Inspection Route on 01 December 2020									
<i>No defects recorded</i>									
Safety Patrol of NSW M8 Polmadie Winter Safety Patrol Route on 05 December 2020									
<i>No defects recorded</i>									
Safety Inspection of NSW M8 Polmadie Safety Inspection Route on 08 December 2020									
<i>No defects recorded</i>									
Safety Patrol of NSW M8 Polmadie Winter Safety Patrol Route on 12 December 2020									
<i>No defects recorded</i>									
Safety Inspection of NSW M8 Polmadie Safety Inspection Route on 15 December 2020									
<i>No defects recorded</i>									
Night Safety Inspection 14 day - Signs and lighting of NSW M8 Polmadie Night Inspection Route on 15 December 2020									
<i>No defects recorded</i>									
Reflective Conspicuity Inspection - Road Studs of NSW M8E Polmadie Detail Inspection Route on 16 December 2020									
NSW77-607755-21	100m	200m	ROAD_STUDS	Missing "catseye" (MISC)	CAT 2		Cat 2 Awaiting Action		
NSW77-607755-2	356m	400m	ROAD_STUDS	Conspicuity stud test failure (LEFT)	CAT 2		Cat 2 Awaiting Action		
Safety Patrol of NSW M8 Polmadie Winter Safety Patrol Route on 19 December 2020									
<i>No defects recorded</i>									
Safety Inspection of NSW M8 Polmadie Safety Inspection Route on 22 December 2020									
<i>No defects recorded</i>									
Safety Patrol of NSW M8 Polmadie Winter Safety Patrol Route on 26 December 2020									
<i>No defects recorded</i>									
Safety Inspection of NSW M8 Polmadie Safety Inspection Route on 29 December 2020									

Defect Reference	Start m	End m	Item Type	Item Detail	Defect Category	Required Completion Date	Current Status	Completion Date	Location Description
<i>No defects recorded</i>									
Night Safety Inspection 14 day - Signs and lighting of NSW M8 Polmadie Night Inspection Route on 30 December 2020									
<i>No defects recorded</i>									
Safety Patrol of NSW M8 Polmadie Winter Safety Patrol Route on 02 January 2021									
<i>No defects recorded</i>									
Safety Inspection of NSW M8 Polmadie Safety Inspection Route on 05 January 2021									
<i>No defects recorded</i>									
Safety Patrol of NSW M8 Polmadie Winter Safety Patrol Route on 09 January 2021									
<i>No defects recorded</i>									
Reactive Defect Recorded 11/01/2021 14:06:33									
D-NSW21237994684	1,003m	1,003m	GULLY	Blockage (BLOK)	CAT 1	27/12/2020	Completed Defects	26/12/2020	M8 e/b J14-13
Night Safety Inspection 14 day - Signs and lighting of NSW M8 Polmadie Night Inspection Route on 12 January 2021									
<i>No defects recorded</i>									
Safety Inspection of NSW M8 Polmadie Safety Inspection Route on 12 January 2021									
<i>No defects recorded</i>									
Safety Patrol of NSW M8 Polmadie Winter Safety Patrol Route on 16 January 2021									
<i>No defects recorded</i>									
Safety Inspection of NSW M8 Polmadie Safety Inspection Route on 18 January 2021									
<i>No defects recorded</i>									
Safety Patrol of NSW M8 Polmadie Winter Safety Patrol Route on 23 January 2021									
<i>No defects recorded</i>									
Night Safety Inspection 14 day - Signs and lighting of NSW M8 Polmadie Night Inspection Route (Awaiting Return)									
<i>No defects recorded</i>									
Safety Inspection of NSW M8 Polmadie Safety Inspection Route on 26 January 2021									
<i>No defects recorded</i>									
Safety Patrol of NSW M8 Polmadie Winter Safety Patrol Route on 30 January 2021									
<i>No defects recorded</i>									
Safety Inspection of NSW M8 Polmadie Safety Inspection Route on 02 February 2021									
<i>No defects recorded</i>									
Safety Patrol of NSW M8 Polmadie Winter Safety Patrol Route on 06 February 2021									
<i>No defects recorded</i>									
Safety Inspection of NSW M8 Polmadie Safety Inspection Route on 09 February 2021									
<i>No defects recorded</i>									
Night Safety Inspection 14 day - Signs and lighting of NSW M8 Polmadie Night Inspection Route on 09 February 2021									
<i>No defects recorded</i>									
Safety Patrol of NSW M8 Polmadie Winter Safety Patrol Route on 13 February 2021									
<i>No defects recorded</i>									
Safety Inspection of NSW M8 Polmadie Safety Inspection Route on 16 February 2021									
<i>No defects recorded</i>									
Safety Patrol of NSW M8 Polmadie Winter Safety Patrol Route on 20 February 2021									
<i>No defects recorded</i>									
Night Safety Inspection 14 day - Signs and lighting of NSW M8 Polmadie Night Inspection Route on 23 February 2021									
<i>No defects recorded</i>									

Defect Reference	Start m	End m	Item Type	Item Detail	Defect Category	Required Completion Date	Current Status	Completion Date	Location Description
Safety Inspection of NSW M8 Polmadie Safety Inspection Route on 23 February 2021									
<i>No defects recorded</i>									
Visual Inspection During Daylight - Road Studs of NSW M8E Polmadie Detail Inspection Route on 26 February 2021									
<i>No defects recorded</i>									
Visual Inspection During Daylight - Road Markings of NSW M8E Polmadie Detail Inspection Route on 26 February 2021									
<i>No defects recorded</i>									
Safety Patrol of NSW M8 Polmadie Winter Safety Patrol Route on 27 February 2021									
<i>No defects recorded</i>									
Safety Inspection of NSW M8 Polmadie Safety Inspection Route on 02 March 2021									
<i>No defects recorded</i>									
Safety Patrol of NSW M8 Polmadie Winter Safety Patrol Route on 06 March 2021									
<i>No defects recorded</i>									
Reactive Defect Recorded 08/03/2021 19:52:22									
D-NSW21238013778	556m	556m	CARRIAGEWAY	Debris in traffic Lane (DBTL)	CAT 1	09/03/2021	Completed Defects	08/03/2021	M8 W/B J13
Night Safety Inspection 14 day - Signs and lighting of NSW M8 Polmadie Night Inspection Route on 09 March 2021									
<i>No defects recorded</i>									
Safety Inspection of NSW M8 Polmadie Safety Inspection Route on 09 March 2021									
<i>No defects recorded</i>									
Safety Patrol of NSW M8 Polmadie Winter Safety Patrol Route on 13 March 2021									
<i>No defects recorded</i>									
Safety Inspection of NSW M8 Polmadie Safety Inspection Route on 16 March 2021									
<i>No defects recorded</i>									
Safety Patrol of NSW M8 Polmadie Winter Safety Patrol Route on 20 March 2021									
<i>No defects recorded</i>									
Night Safety Inspection 14 day - Signs and lighting of NSW M8 Polmadie Night Inspection Route on 23 March 2021									
<i>No defects recorded</i>									
Safety Inspection of NSW M8 Polmadie Safety Inspection Route on 23 March 2021									
<i>No defects recorded</i>									
Safety Patrol of NSW M8 Polmadie Winter Safety Patrol Route on 27 March 2021									
<i>No defects recorded</i>									
Safety Inspection of NSW M8 Polmadie Safety Inspection Route on 30 March 2021									
<i>No defects recorded</i>									
Visual Inspection During Darkness - Road Markings of NSW M8E Polmadie Detail Inspection Route on 31 March 2021									
NSW77-607744-11	833m	863m	ROAD_MARKINGS _LONG	Wear (for example erosion) (WEAR)	CAT 2		Cat 2 Awaiting Action		
Safety Patrol of NSW M8 Polmadie Summer Safety Patrol Route on 03 April 2021									
<i>No defects recorded</i>									
Safety Inspection of NSW M8 Polmadie Safety Inspection Route on 06 April 2021									
<i>No defects recorded</i>									
Safety Patrol of NSW M8 Polmadie Summer Safety Patrol Route on 10 April 2021									
<i>No defects recorded</i>									

Defect Reference	Start m	End m	Item Type	Item Detail	Defect Category	Required Completion Date	Current Status	Completion Date	Location Description
Safety Inspection of NSW M8 Polmadie Safety Inspection Route on 13 April 2021									
<i>No defects recorded</i>									
Safety Patrol of NSW M8 Polmadie Summer Safety Patrol Route on 17 April 2021									
<i>No defects recorded</i>									
Night Safety Inspection 28 day - Signs and lighting of NSW M8 Polmadie Night Inspection Route on 20 April 2021									
<i>No defects recorded</i>									
Safety Inspection of NSW M8 Polmadie Safety Inspection Route on 20 April 2021									
<i>No defects recorded</i>									
Safety Patrol of NSW M8 Polmadie Summer Safety Patrol Route on 24 April 2021									
<i>No defects recorded</i>									
Safety Inspection of NSW M8 Polmadie Safety Inspection Route on 27 April 2021									
<i>No defects recorded</i>									
Safety Patrol of NSW M8 Polmadie Summer Safety Patrol Route on 01 May 2021									
<i>No defects recorded</i>									
Safety Inspection of NSW M8 Polmadie Safety Inspection Route on 04 May 2021									
<i>No defects recorded</i>									
Safety Patrol of NSW M8 Polmadie Summer Safety Patrol Route on 08 May 2021									
<i>No defects recorded</i>									
Safety Inspection of NSW M8 Polmadie Safety Inspection Route on 11 May 2021									
<i>No defects recorded</i>									
Safety Patrol of NSW M8 Polmadie Summer Safety Patrol Route on 15 May 2021									
<i>No defects recorded</i>									
Night Safety Inspection 28 day - Signs and lighting of NSW M8 Polmadie Night Inspection Route on 18 May 2021									
<i>No defects recorded</i>									
Safety Inspection of NSW M8 Polmadie Safety Inspection Route on 18 May 2021									
<i>No defects recorded</i>									
Safety Patrol of NSW M8 Polmadie Summer Safety Patrol Route on 22 May 2021									
<i>No defects recorded</i>									
Safety Inspection of NSW M8 Polmadie Safety Inspection Route on 25 May 2021									
<i>No defects recorded</i>									
Safety Patrol of NSW M8 Polmadie Summer Safety Patrol Route on 29 May 2021									
<i>No defects recorded</i>									
Safety Inspection of NSW M8 Polmadie Safety Inspection Route on 01 June 2021									
<i>No defects recorded</i>									
Safety Patrol of NSW M8 Polmadie Summer Safety Patrol Route on 05 June 2021									
<i>No defects recorded</i>									
Safety Inspection of NSW M8 Polmadie Safety Inspection Route on 08 June 2021									
<i>No defects recorded</i>									
Safety Patrol of NSW M8 Polmadie Summer Safety Patrol Route on 12 June 2021									
<i>No defects recorded</i>									
Detailed Inspection TEMPLATE of NSW M8E Polmadie Detail Inspection Route on 27 May 2021									
NSW92-650032-565	17m	47m	VERGE	Detritus / Refuse (DETR)	CAT 2		Cat 2 Awaiting Action		

Defect Reference	Start m	End m	Item Type	Item Detail	Defect Category	Required Completion Date	Current Status	Completion Date	Location Description
NSW92-650032-363	870m	970m	CARRIAGEWAY	Patch - loss of material (fretting) (PLMT)	CAT 2		Cat 2 Awaiting Action		
NSW92-650032-628	291m	0m	CATCHPIT	Cracked or broken (IBCK)	CAT 2		Cat 2 Awaiting Action		

Annual Detailed Inspection - Carriageways of NSW M8E Polmadie Detail Inspection Route

No defects recorded

Annual Detailed Inspection - Drainage Grips of NSW M8E Polmadie Detail Inspection Route

No defects recorded

CR Detailed Inspection - Covers, Gratings and Frames of NSW M8E Polmadie Detail Inspection Route

No defects recorded

CR Detailed Inspection - Filter Drains and Soakaways of NSW M8E Polmadie Detail Inspection Route

No defects recorded

CR Detailed Inspection - Carriageways of NSW M8E Polmadie Detail Inspection Route

No defects recorded

CR Detailed Inspection - Kerbs, Channels, Edgings of NSW M8E Polmadie Detail Inspection Route

No defects recorded

CR Detailed Inspection - Carriageways of NSW M8E Polmadie Detail Inspection Route

No defects recorded

Detailed Inspection - All other Footways of NSW M8E Polmadie Detail Inspection Route

No defects recorded

Detailed Inspection - All signs of NSW M8E Polmadie Detail Inspection Route

No defects recorded

Detailed Inspection - Covers, Gratings and Frames of NSW M8E Polmadie Detail Inspection Route

No defects recorded

Detailed Inspection - Ditches of NSW M8E Polmadie Detail Inspection Route

No defects recorded

Detailed Inspection - Fences, Walls, Screens etc of NSW M8E Polmadie Detail Inspection Route

No defects recorded

Detailed Inspection - Filter Drains and Soakaways of NSW M8E Polmadie Detail Inspection Route

No defects recorded

Detailed Inspection - Geotechnical Assets of NSW M8E Polmadie Detail Inspection Route

No defects recorded

Detailed Inspection - Kerbs, Channels, Edgings of NSW M8E Polmadie Detail Inspection Route

No defects recorded

Detailed Inspection - Linear Drainage Systems of NSW M8E Polmadie Detail Inspection Route

No defects recorded

Detailed Inspection - Node Markers of NSW M8E Polmadie Detail Inspection Route

No defects recorded

Detailed Inspection - Pedestrian Restraint Systems of NSW M8E Polmadie Detail Inspection Route

No defects recorded

CR Detailed Inspection - Carriageways of NSW M8E Polmadie Detail Inspection Route

No defects recorded



Defect Reference	Start m	End m	Item Type	Item Detail	Defect Category	Required Completion Date	Current Status	Completion Date	Location Description
Night Safety Inspection 28 day - Signs and lighting of NSW M8 Polmadie Night Inspection Route on 15 June 2021									
<i>No defects recorded</i>									
Safety Inspection of NSW M8 Polmadie Safety Inspection Route on 15 June 2021									
<i>No defects recorded</i>									
Safety Patrol of NSW M8 Polmadie Summer Safety Patrol Route on 19 June 2021									
<i>No defects recorded</i>									
Safety Inspection of NSW M8 Polmadie Safety Inspection Route on 22 June 2021									
<i>No defects recorded</i>									
Safety Inspection of NSW M8 Polmadie Safety Inspection Route on 29 June 2021									
<i>No defects recorded</i>									
Detailed Inspection TEMPLATE of NSW M8E Polmadie Detail Inspection Route on 30 June 2021									
<i>No defects recorded</i>									
Detailed Inspection growing season - Grassed Areas of NSW M8E Polmadie Detail Inspection Route									
<i>No defects recorded</i>									
Detailed Inspection - Bulb and Wildflower Areas of NSW M8E Polmadie Detail Inspection Route									
<i>No defects recorded</i>									
Detailed Inspection - Scrub, shrub and hedges of NSW M8E Polmadie Detail Inspection Route									
<i>No defects recorded</i>									
Detailed Inspection - Invasive Species of NSW M8E Polmadie Detail Inspection Route									
<i>No defects recorded</i>									
Detailed Inspection - Woodland areas and Trees of NSW M8E Polmadie Detail Inspection Route									
<i>No defects recorded</i>									
Safety Inspection of NSW M8 Polmadie Safety Inspection Route on 06 July 2021									
<i>No defects recorded</i>									
Safety Patrol of NSW M8 Polmadie Summer Safety Patrol Route on 07 July 2021									
<i>No defects recorded</i>									
Safety Patrol of NSW M8 Polmadie Summer Safety Patrol Route on 07 July 2021									
<i>No defects recorded</i>									
Safety Patrol of NSW M8 Polmadie Summer Safety Patrol Route on 10 July 2021									
<i>No defects recorded</i>									
Night Safety Inspection 28 day - Signs and lighting of NSW M8 Polmadie Night Inspection Route on 13 July 2021									
NSW76-683587-238128181	767m	0m	LIGHTING_POINT	Electrical condition (COEL)	CAT 1	10/08/2021	Completed Defects	14/07/2021	M8 ONSLIP FROM M80 W/B (MAST ON VERGE BETWEEN MAIN M8 AND ONSLIP FROM M80)
Safety Inspection of NSW M8 Polmadie Safety Inspection Route on 13 July 2021									
<i>No defects recorded</i>									
Safety Patrol of NSW M8 Polmadie Summer Safety Patrol Route on 17 July 2021									
<i>No defects recorded</i>									
Safety Inspection of NSW M8 Polmadie Safety Inspection Route on 20 July 2021									
<i>No defects recorded</i>									
Safety Patrol of NSW M8 Polmadie Summer Safety Patrol Route on 24 July 2021									
<i>No defects recorded</i>									
Safety Inspection of NSW M8 Polmadie Safety Inspection Route on 27 July 2021									

Defect Reference	Start m	End m	Item Type	Item Detail	Defect Category	Required Completion Date	Current Status	Completion Date	Location Description
<i>No defects recorded</i>									
Safety Patrol of NSW M8 Polmadie Summer Safety Patrol Route on 31 July 2021									
<i>No defects recorded</i>									
Safety Inspection of NSW M8 Polmadie Safety Inspection Route on 03 August 2021									
<i>No defects recorded</i>									
Safety Patrol of NSW M8 Polmadie Summer Safety Patrol Route on 07 August 2021									
<i>No defects recorded</i>									
Night Safety Inspection 28 day - Signs and lighting of NSW M8 Polmadie Night Inspection Route on 10 August 2021									
<i>No defects recorded</i>									
Safety Inspection of NSW M8 Polmadie Safety Inspection Route on 10 August 2021									
<i>No defects recorded</i>									
Safety Patrol of NSW M8 Polmadie Summer Safety Patrol Route on 14 August 2021									
<i>No defects recorded</i>									
Safety Inspection of NSW M8 Polmadie Safety Inspection Route on 17 August 2021									
<i>No defects recorded</i>									
Safety Patrol of NSW M8 Polmadie Summer Safety Patrol Route on 21 August 2021									
<i>No defects recorded</i>									
Safety Inspection of NSW M8 Polmadie Safety Inspection Route on 24 August 2021									
<i>No defects recorded</i>									
Reactive Defect Recorded 26/08/2021 20:37:29									
D-NSW21238316588	617m	617m	CABINET	Damaged (DAMG)	CAT 1	27/08/2021	Completed Defects	26/08/2021	M8 J13 w/b
Safety Patrol of NSW M8 Polmadie Summer Safety Patrol Route on 28 August 2021									
<i>No defects recorded</i>									
Safety Inspection of NSW M8 Polmadie Safety Inspection Route on 31 August 2021									
<i>No defects recorded</i>									
Safety Patrol of NSW M8 Polmadie Summer Safety Patrol Route on 04 September 2021									
<i>No defects recorded</i>									
Night Safety Inspection 28 day - Signs and lighting of NSW M8 Polmadie Night Inspection Route on 07 September 2021									
<i>No defects recorded</i>									
Safety Inspection of NSW M8 Polmadie Safety Inspection Route on 07 September 2021									
<i>No defects recorded</i>									
Reactive Defect Recorded 11/09/2021 19:15:46									
D-NSW21238366927	0m	0m	REMOVE_ANIMAL	Carcass of dead animal (DEAD)	CAT 1	12/09/2021	Completed Defects	11/09/2021	M8 W/B J13 H/S
Safety Patrol of NSW M8 Polmadie Summer Safety Patrol Route on 11 September 2021									
<i>No defects recorded</i>									
Safety Inspection of NSW M8 Polmadie Safety Inspection Route on 14 September 2021									
<i>No defects recorded</i>									
Safety Patrol of NSW M8 Polmadie Summer Safety Patrol Route on 18 September 2021									
<i>No defects recorded</i>									
Safety Inspection of NSW M8 Polmadie Safety Inspection Route on 21 September 2021									
<i>No defects recorded</i>									

Defect Reference	Start m	End m	Item Type	Item Detail	Defect Category	Required Completion Date	Current Status	Completion Date	Location Description
Safety Patrol of NSW M8 Polmadie Summer Safety Patrol Route on 25 September 2021									
<i>No defects recorded</i>									
Safety Inspection of NSW M8 Polmadie Safety Inspection Route on 28 September 2021									
<i>No defects recorded</i>									
Safety Patrol of NSW M8 Polmadie Winter Safety Patrol Route on 02 October 2021									
<i>No defects recorded</i>									
Reactive Defect Recorded 04/10/2021 19:06:23									
D-NSW21238409968	264m	264m	REMOVE_ANIMAL	Carcass of dead animal (DEAD)	CAT 1	05/10/2021	Completed Defects	04/10/2021	M8 W/B J13
Safety Inspection of NSW M8 Polmadie Safety Inspection Route on 05 October 2021									
<i>No defects recorded</i>									
Night Safety Inspection 14 day - Signs and lighting of NSW M8 Polmadie Night Inspection Route on 05 October 2021									
<i>No defects recorded</i>									
Safety Patrol of NSW M8 Polmadie Winter Safety Patrol Route on 09 October 2021									
<i>No defects recorded</i>									
Safety Inspection of NSW M8 Polmadie Safety Inspection Route on 12 October 2021									
<i>No defects recorded</i>									
Safety Patrol of NSW M8 Polmadie Winter Safety Patrol Route on 16 October 2021									
<i>No defects recorded</i>									
Safety Inspection of NSW M8 Polmadie Safety Inspection Route on 19 October 2021									
<i>No defects recorded</i>									
Safety Patrol of NSW M8 Polmadie Winter Safety Patrol Route on 23 October 2021									
<i>No defects recorded</i>									
Visual Inspection During Darkness - Road Markings of NSW M8E Polmadie Detail Inspection Route on 25 October 2021									
NSW78-741195-2	927m	927m	ROAD_MARKINGS _HATCHED	Wear (for example erosion) (WEAR)	CAT 2		Cat 2 Awaiting Action		JUNC 13 ON
Safety Inspection of NSW M8 Polmadie Safety Inspection Route on 26 October 2021									
<i>No defects recorded</i>									
Visual Inspection During Daylight - Road Studs of NSW M8E Polmadie Detail Inspection Route on 27 October 2021									
<i>No defects recorded</i>									
Visual Inspection During Daylight - Road Markings of NSW M8E Polmadie Detail Inspection Route on 27 October 2021									
NSW95-705796-4	934m	994m	ROAD_MARKINGS _HATCHED	Wear (for example erosion) (WEAR)	CAT 2		Cat 2 Awaiting Action		
Safety Patrol of NSW M8 Polmadie Winter Safety Patrol Route on 30 October 2021									
<i>No defects recorded</i>									
Safety Inspection of NSW M8 Polmadie Safety Inspection Route on 02 November 2021									
<i>No defects recorded</i>									
Night Safety Inspection 14 day - Signs and lighting of NSW M8 Polmadie Night Inspection Route on 02 November 2021									
<i>No defects recorded</i>									

Defect Reference	Start m	End m	Item Type	Item Detail	Defect Category	Required Completion Date	Current Status	Completion Date	Location Description
Safety Patrol of NSW M8 Polmadie Winter Safety Patrol Route on 06 November 2021									
<i>No defects recorded</i>									
Safety Inspection of NSW M8 Polmadie Safety Inspection Route on 09 November 2021									
<i>No defects recorded</i>									
Safety Patrol of NSW M8 Polmadie Winter Safety Patrol Route on 13 November 2021									
<i>No defects recorded</i>									
Night Safety Inspection 14 day - Signs and lighting of NSW M8 Polmadie Night Inspection Route on 16 November 2021									
<i>No defects recorded</i>									
Safety Inspection of NSW M8 Polmadie Safety Inspection Route on 16 November 2021									
<i>No defects recorded</i>									
Safety Patrol of NSW M8 Polmadie Winter Safety Patrol Route on 20 November 2021									
<i>No defects recorded</i>									
Safety Inspection of NSW M8 Polmadie Safety Inspection Route on 23 November 2021									
<i>No defects recorded</i>									
Safety Patrol of NSW M8 Polmadie Winter Safety Patrol Route on 27 November 2021									
<i>No defects recorded</i>									
Night Safety Inspection 14 day - Signs and lighting of NSW M8 Polmadie Night Inspection Route on 30 November 2021									
<i>No defects recorded</i>									
Safety Inspection of NSW M8 Polmadie Safety Inspection Route on 30 November 2021									
<i>No defects recorded</i>									
Safety Patrol of NSW M8 Polmadie Winter Safety Patrol Route on 04 December 2021									
<i>No defects recorded</i>									
Safety Inspection of NSW M8 Polmadie Safety Inspection Route on 07 December 2021									
<i>No defects recorded</i>									
Safety Patrol of NSW M8 Polmadie Winter Safety Patrol Route on 10 December 2021									
<i>No defects recorded</i>									
Night Safety Inspection 14 day - Signs and lighting of NSW M8 Polmadie Night Inspection Route on 14 December 2021									
<i>No defects recorded</i>									
Safety Inspection of NSW M8 Polmadie Safety Inspection Route on 14 December 2021									
<i>No defects recorded</i>									
Safety Patrol of NSW M8 Polmadie Winter Safety Patrol Route on 17 December 2021									
<i>No defects recorded</i>									
Safety Inspection of NSW M8 Polmadie Safety Inspection Route on 21 December 2021									
<i>No defects recorded</i>									
Safety Patrol of NSW M8 Polmadie Winter Safety Patrol Route on 24 December 2021									
<i>No defects recorded</i>									
Night Safety Inspection 14 day - Signs and lighting of NSW M8 Polmadie Night Inspection Route on 28 December 2021									
<i>No defects recorded</i>									
Safety Inspection of NSW M8 Polmadie Safety Inspection Route on 28 December 2021									
<i>No defects recorded</i>									
Safety Patrol of NSW M8 Polmadie Winter Safety Patrol Route on 31 December 2021									
<i>No defects recorded</i>									
Safety Inspection of NSW M8 Polmadie Safety Inspection Route on 04 January 2022									
<i>No defects recorded</i>									
Safety Patrol of NSW M8 Polmadie Winter Safety Patrol Route on 07 January 2022									

Defect Reference	Start m	End m	Item Type	Item Detail	Defect Category	Required Completion Date	Current Status	Completion Date	Location Description
<i>No defects recorded</i>									
Night Safety Inspection 14 day - Signs and lighting of NSW M8 Polmadie Night Inspection Route on 11 January 2022									
<i>No defects recorded</i>									
Safety Inspection of NSW M8 Polmadie Safety Inspection Route on 11 January 2022									
<i>No defects recorded</i>									
Reactive Defect Recorded 13/01/2022 19:13:40									
D-NSW22238543489	366m	366m	CARRIAGEWAY	Debris in traffic Lane (DBTL)	CAT 1	14/01/2022	Completed Defects	13/01/2022	M8 W/B J13
Safety Patrol of NSW M8 Polmadie Winter Safety Patrol Route on 14 January 2022									
<i>No defects recorded</i>									
Safety Inspection of NSW M8 Polmadie Safety Inspection Route on 18 January 2022									
<i>No defects recorded</i>									
Safety Patrol of NSW M8 Polmadie Winter Safety Patrol Route on 21 January 2022									
<i>No defects recorded</i>									
Reactive Defect Recorded 22/01/2022 18:27:59									
D-NSW22238548506	937m	937m	PEDESTRIAN_GU ARDRAIL	Accident damage (ACCD)	CAT 1	18/02/2022	Completed Defects	21/01/2022	M8 J13 both directions
Night Safety Inspection 14 day - Signs and lighting of NSW M8 Polmadie Night Inspection Route on 25 January 2022									
<i>No defects recorded</i>									
Safety Inspection of NSW M8 Polmadie Safety Inspection Route on 25 January 2022									
<i>No defects recorded</i>									
Safety Patrol of NSW M8 Polmadie Winter Safety Patrol Route on 28 January 2022									
<i>No defects recorded</i>									
Safety Inspection of NSW M8 Polmadie Safety Inspection Route on 01 February 2022									
<i>No defects recorded</i>									
Safety Patrol of NSW M8 Polmadie Winter Safety Patrol Route on 04 February 2022									
<i>No defects recorded</i>									
Night Safety Inspection 14 day - Signs and lighting of NSW M8 Polmadie Night Inspection Route on 31 January 2022									
<i>No defects recorded</i>									
Safety Inspection of NSW M8 Polmadie Safety Inspection Route on 11 February 2022									
<i>No defects recorded</i>									
Safety Patrol of NSW M8 Polmadie Winter Safety Patrol Route on 11 February 2022									
<i>No defects recorded</i>									
Safety Inspection of NSW M8 Polmadie Safety Inspection Route on 15 February 2022									
<i>No defects recorded</i>									
Safety Patrol of NSW M8 Polmadie Winter Safety Patrol Route on 18 February 2022									
<i>No defects recorded</i>									
Night Safety Inspection 14 day - Signs and lighting of NSW M8 Polmadie Night Inspection Route on 22 February 2022									
<i>No defects recorded</i>									
Safety Inspection of NSW M8 Polmadie Safety Inspection Route on 22 February 2022									
<i>No defects recorded</i>									
Safety Patrol of NSW M8 Polmadie Winter Safety Patrol Route on 25 February 2022									
<i>No defects recorded</i>									

Defect Reference	Start m	End m	Item Type	Item Detail	Defect Category	Required Completion Date	Current Status	Completion Date	Location Description
Safety Inspection of NSW M8 Polmadie Safety Inspection Route on 01 March 2022									
<i>No defects recorded</i>									
Safety Patrol of NSW M8 Polmadie Winter Safety Patrol Route on 04 March 2022									
<i>No defects recorded</i>									
Night Safety Inspection 14 day - Signs and lighting of NSW M8 Polmadie Night Inspection Route on 08 March 2022									
<i>No defects recorded</i>									
Safety Inspection of NSW M8 Polmadie Safety Inspection Route on 08 March 2022									
<i>No defects recorded</i>									
Safety Patrol of NSW M8 Polmadie Winter Safety Patrol Route on 11 March 2022									
<i>No defects recorded</i>									
Safety Inspection of NSW M8 Polmadie Safety Inspection Route on 15 March 2022									
<i>No defects recorded</i>									
Reactive Defect Recorded 18/03/2022 19:15:35									
D-NSW22238613379	151m	151m	CARRIAGEWAY	Debris in hard shoulder (DBHS)	CAT 1	19/03/2022	Completed Defects	18/03/2022	M8 w/b J13
Safety Patrol of NSW M8 Polmadie Winter Safety Patrol Route on 18 March 2022									
<i>No defects recorded</i>									
Reflective Conspicuity Inspection - Road Studs of NSW M8E Polmadie Detail Inspection Route on 19 March 2022									
<i>No defects recorded</i>									
Visual Inspection During Darkness - Road Markings of NSW M8E Polmadie Detail Inspection Route on 18 March 2022									
<i>No defects recorded</i>									
Night Safety Inspection 14 day - Signs and lighting of NSW M8 Polmadie Night Inspection Route on 22 March 2022									
<i>No defects recorded</i>									
Safety Inspection of NSW M8 Polmadie Safety Inspection Route on 22 March 2022									
<i>No defects recorded</i>									
Safety Patrol of NSW M8 Polmadie Winter Safety Patrol Route on 25 March 2022									
<i>No defects recorded</i>									
Safety Inspection of NSW M8 Polmadie Safety Inspection Route on 29 March 2022									
<i>No defects recorded</i>									
Visual Inspection During Daylight - Road Markings of NSW M8E Polmadie Detail Inspection Route on 31 March 2022									
<i>No defects recorded</i>									
Visual Inspection During Daylight - Road Studs of NSW M8E Polmadie Detail Inspection Route on 31 March 2022									
<i>No defects recorded</i>									

Inspection Defect Summary Report



Defect Reference	Start m	End m	Item Type	Item Detail	Defect Category	Required Completion Date	Current Status	Completion Date	Location Description
14225/10 : WITH: SLIP OFF M8 WB TO M80 INT									
Safety Inspection of M8 Glasgow East V1 on 04 August 2020									
No defects recorded									
Safety Inspection of M8 Glasgow East V1 on 11 August 2020									
No defects recorded									
Night Safety Inspection 28 day - Signs and lighting of M8 Glasgow East V1 on 11 August 2020									
SW83-603977-237340569	401m	0m	TRAFFIC_SIGNS	Lamp failure (LAMP)	CAT 1	12/08/2020	Completed Defects	11/08/2020	m8 jct 13 off ramp w/b
Safety Inspection of NSW M8 Polmadie Safety Inspection Route on 29 September 2020									
No defects recorded									
Safety Patrol of NSW M8 Polmadie Winter Safety Patrol Route on 03 October 2020									
No defects recorded									
Safety Inspection of NSW M8 Polmadie Safety Inspection Route on 06 October 2020									
No defects recorded									
Night Safety Inspection 14 day - Signs and lighting of NSW M8 Polmadie Night Inspection Route on 06 October 2020									
No defects recorded									
Safety Patrol of NSW M8 Polmadie Winter Safety Patrol Route on 10 October 2020									
No defects recorded									
Safety Inspection of NSW M8 Polmadie Safety Inspection Route on 13 October 2020									
No defects recorded									
Safety Patrol of NSW M8 Polmadie Winter Safety Patrol Route on 17 October 2020									
No defects recorded									
Safety Inspection of NSW M8 Polmadie Safety Inspection Route on 20 October 2020									
No defects recorded									
Night Safety Inspection 14 day - Signs and lighting of NSW M8 Polmadie Night Inspection Route on 20 October 2020									
No defects recorded									
Safety Patrol of NSW M8 Polmadie Winter Safety Patrol Route on 24 October 2020									
No defects recorded									
Safety Inspection of NSW M8 Polmadie Safety Inspection Route on 27 October 2020									
No defects recorded									
Safety Patrol of NSW M8 Polmadie Winter Safety Patrol Route on 31 October 2020									
No defects recorded									
Safety Inspection of NSW M8 Polmadie Safety Inspection Route on 03 November 2020									
No defects recorded									
Night Safety Inspection 14 day - Signs and lighting of NSW M8 Polmadie Night Inspection Route on 04 November 2020									
No defects recorded									

Defect Reference	Start m	End m	Item Type	Item Detail	Defect Category	Required Completion Date	Current Status	Completion Date	Location Description
Safety Patrol of NSW M8 Polmadie Winter Safety Patrol Route on 03 October 2020									
<i>No defects recorded</i>									
Safety Inspection of NSW M8 Polmadie Safety Inspection Route on 10 November 2020									
<i>No defects recorded</i>									
Safety Patrol of NSW M8 Polmadie Winter Safety Patrol Route on 14 November 2020									
<i>No defects recorded</i>									
Safety Inspection of NSW M8 Polmadie Safety Inspection Route on 17 November 2020									
<i>No defects recorded</i>									
Night Safety Inspection 14 day - Signs and lighting of NSW M8 Polmadie Night Inspection Route on 17 November 2020									
<i>No defects recorded</i>									
Safety Patrol of NSW M8 Polmadie Winter Safety Patrol Route on 21 November 2020									
<i>No defects recorded</i>									
Safety Inspection of NSW M8 Polmadie Safety Inspection Route on 24 November 2020									
<i>No defects recorded</i>									
Safety Patrol of NSW M8 Polmadie Winter Safety Patrol Route on 28 November 2020									
<i>No defects recorded</i>									
Safety Inspection of NSW M8 Polmadie Safety Inspection Route on 01 December 2020									
<i>No defects recorded</i>									
Night Safety Inspection 14 day - Signs and lighting of NSW M8 Polmadie Night Inspection Route on 01 December 2020									
<i>No defects recorded</i>									
Safety Patrol of NSW M8 Polmadie Winter Safety Patrol Route on 05 December 2020									
<i>No defects recorded</i>									
Safety Inspection of NSW M8 Polmadie Safety Inspection Route on 08 December 2020									
<i>No defects recorded</i>									
Safety Patrol of NSW M8 Polmadie Winter Safety Patrol Route on 12 December 2020									
<i>No defects recorded</i>									
Safety Inspection of NSW M8 Polmadie Safety Inspection Route on 15 December 2020									
<i>No defects recorded</i>									
Night Safety Inspection 14 day - Signs and lighting of NSW M8 Polmadie Night Inspection Route on 15 December 2020									
<i>No defects recorded</i>									
Reflective Conspicuity Inspection - Road Studs of NSW M8E Polmadie Detail Inspection Route on 16 December 2020									
<i>No defects recorded</i>									
Safety Patrol of NSW M8 Polmadie Winter Safety Patrol Route on 19 December 2020									
<i>No defects recorded</i>									
Safety Inspection of NSW M8 Polmadie Safety Inspection Route on 22 December 2020									
<i>No defects recorded</i>									
Safety Patrol of NSW M8 Polmadie Winter Safety Patrol Route on 26 December 2020									
<i>No defects recorded</i>									
Safety Inspection of NSW M8 Polmadie Safety Inspection Route on 29 December 2020									
<i>No defects recorded</i>									
Night Safety Inspection 14 day - Signs and lighting of NSW M8 Polmadie Night Inspection Route on 30 December 2020									
<i>No defects recorded</i>									
Safety Patrol of NSW M8 Polmadie Winter Safety Patrol Route on 02 January 2021									
<i>No defects recorded</i>									
Safety Inspection of NSW M8 Polmadie Safety Inspection Route on 05 January 2021									



Defect Reference	Start m	End m	Item Type	Item Detail	Defect Category	Required Completion Date	Current Status	Completion Date	Location Description
<i>No defects recorded</i>									
Safety Patrol of NSW M8 Polmadie Winter Safety Patrol Route on 09 January 2021									
<i>No defects recorded</i>									
Night Safety Inspection 14 day - Signs and lighting of NSW M8 Polmadie Night Inspection Route on 12 January 2021									
<i>No defects recorded</i>									
Safety Inspection of NSW M8 Polmadie Safety Inspection Route on 12 January 2021									
<i>No defects recorded</i>									
Safety Patrol of NSW M8 Polmadie Winter Safety Patrol Route on 16 January 2021									
<i>No defects recorded</i>									
Safety Inspection of NSW M8 Polmadie Safety Inspection Route on 18 January 2021									
<i>No defects recorded</i>									
Safety Patrol of NSW M8 Polmadie Winter Safety Patrol Route on 23 January 2021									
<i>No defects recorded</i>									
Safety Inspection of NSW M8 Polmadie Safety Inspection Route on 26 January 2021									
<i>No defects recorded</i>									
Safety Patrol of NSW M8 Polmadie Winter Safety Patrol Route on 30 January 2021									
<i>No defects recorded</i>									
Safety Inspection of NSW M8 Polmadie Safety Inspection Route on 02 February 2021									
<i>No defects recorded</i>									
Safety Patrol of NSW M8 Polmadie Winter Safety Patrol Route on 06 February 2021									
<i>No defects recorded</i>									
Night Safety Inspection 14 day - Signs and lighting of NSW M8 Polmadie Night Inspection Route on 09 February 2021									
<i>No defects recorded</i>									
Safety Inspection of NSW M8 Polmadie Safety Inspection Route on 09 February 2021									
<i>No defects recorded</i>									
Safety Patrol of NSW M8 Polmadie Winter Safety Patrol Route on 13 February 2021									
<i>No defects recorded</i>									
Safety Inspection of NSW M8 Polmadie Safety Inspection Route on 16 February 2021									
<i>No defects recorded</i>									
Safety Patrol of NSW M8 Polmadie Winter Safety Patrol Route on 20 February 2021									
<i>No defects recorded</i>									
Night Safety Inspection 14 day - Signs and lighting of NSW M8 Polmadie Night Inspection Route on 23 February 2021									
<i>No defects recorded</i>									
Safety Inspection of NSW M8 Polmadie Safety Inspection Route on 23 February 2021									
<i>No defects recorded</i>									
Visual Inspection During Daylight - Road Studs of NSW M8E Polmadie Detail Inspection Route on 26 February 2021									
<i>No defects recorded</i>									
Visual Inspection During Daylight - Road Markings of NSW M8E Polmadie Detail Inspection Route on 26 February 2021									
<i>No defects recorded</i>									
Safety Patrol of NSW M8 Polmadie Winter Safety Patrol Route on 27 February 2021									
<i>No defects recorded</i>									
Safety Inspection of NSW M8 Polmadie Safety Inspection Route on 02 March 2021									
<i>No defects recorded</i>									
Safety Patrol of NSW M8 Polmadie Winter Safety Patrol Route on 06 March 2021									
<i>No defects recorded</i>									

Defect Reference	Start m	End m	Item Type	Item Detail	Defect Category	Required Completion Date	Current Status	Completion Date	Location Description
Night Safety Inspection 14 day - Signs and lighting of NSW M8 Polmadie Night Inspection Route on 09 March 2021									
<i>No defects recorded</i>									
Safety Inspection of NSW M8 Polmadie Safety Inspection Route on 09 March 2021									
<i>No defects recorded</i>									
Safety Patrol of NSW M8 Polmadie Winter Safety Patrol Route on 13 March 2021									
<i>No defects recorded</i>									
Safety Inspection of NSW M8 Polmadie Safety Inspection Route on 16 March 2021									
<i>No defects recorded</i>									
Safety Patrol of NSW M8 Polmadie Winter Safety Patrol Route on 20 March 2021									
<i>No defects recorded</i>									
Night Safety Inspection 14 day - Signs and lighting of NSW M8 Polmadie Night Inspection Route on 23 March 2021									
<i>No defects recorded</i>									
Safety Inspection of NSW M8 Polmadie Safety Inspection Route on 23 March 2021									
<i>No defects recorded</i>									
Safety Patrol of NSW M8 Polmadie Winter Safety Patrol Route on 27 March 2021									
<i>No defects recorded</i>									
Safety Inspection of NSW M8 Polmadie Safety Inspection Route on 30 March 2021									
<i>No defects recorded</i>									
Visual Inspection During Darkness - Road Markings of NSW M8E Polmadie Detail Inspection Route on 31 March 2021									
<i>No defects recorded</i>									
Safety Patrol of NSW M8 Polmadie Summer Safety Patrol Route on 03 April 2021									
<i>No defects recorded</i>									
Safety Inspection of NSW M8 Polmadie Safety Inspection Route on 06 April 2021									
<i>No defects recorded</i>									
Safety Patrol of NSW M8 Polmadie Summer Safety Patrol Route on 10 April 2021									
<i>No defects recorded</i>									
Safety Inspection of NSW M8 Polmadie Safety Inspection Route on 13 April 2021									
<i>No defects recorded</i>									
Safety Patrol of NSW M8 Polmadie Summer Safety Patrol Route on 17 April 2021									
<i>No defects recorded</i>									
Night Safety Inspection 28 day - Signs and lighting of NSW M8 Polmadie Night Inspection Route on 20 April 2021									
<i>No defects recorded</i>									
Safety Inspection of NSW M8 Polmadie Safety Inspection Route on 20 April 2021									
<i>No defects recorded</i>									
Safety Patrol of NSW M8 Polmadie Summer Safety Patrol Route on 24 April 2021									
<i>No defects recorded</i>									
Safety Inspection of NSW M8 Polmadie Safety Inspection Route on 27 April 2021									
<i>No defects recorded</i>									
Safety Patrol of NSW M8 Polmadie Summer Safety Patrol Route on 01 May 2021									
<i>No defects recorded</i>									
Safety Inspection of NSW M8 Polmadie Safety Inspection Route on 04 May 2021									
<i>No defects recorded</i>									
Safety Patrol of NSW M8 Polmadie Summer Safety Patrol Route on 08 May 2021									
<i>No defects recorded</i>									
Safety Inspection of NSW M8 Polmadie Safety Inspection Route on 11 May 2021									



Defect Reference	Start m	End m	Item Type	Item Detail	Defect Category	Required Completion Date	Current Status	Completion Date	Location Description
<i>No defects recorded</i>									
Safety Patrol of NSW M8 Polmadie Summer Safety Patrol Route on 15 May 2021									
<i>No defects recorded</i>									
Night Safety Inspection 28 day - Signs and lighting of NSW M8 Polmadie Night Inspection Route on 18 May 2021									
<i>No defects recorded</i>									
Safety Inspection of NSW M8 Polmadie Safety Inspection Route on 18 May 2021									
<i>No defects recorded</i>									
Safety Patrol of NSW M8 Polmadie Summer Safety Patrol Route on 22 May 2021									
<i>No defects recorded</i>									
Safety Inspection of NSW M8 Polmadie Safety Inspection Route on 25 May 2021									
<i>No defects recorded</i>									
Safety Patrol of NSW M8 Polmadie Summer Safety Patrol Route on 29 May 2021									
<i>No defects recorded</i>									
Safety Inspection of NSW M8 Polmadie Safety Inspection Route on 01 June 2021									
<i>No defects recorded</i>									
Safety Patrol of NSW M8 Polmadie Summer Safety Patrol Route on 05 June 2021									
<i>No defects recorded</i>									
Safety Inspection of NSW M8 Polmadie Safety Inspection Route on 08 June 2021									
<i>No defects recorded</i>									
Safety Patrol of NSW M8 Polmadie Summer Safety Patrol Route on 12 June 2021									
<i>No defects recorded</i>									
Night Safety Inspection 28 day - Signs and lighting of NSW M8 Polmadie Night Inspection Route on 15 June 2021									
<i>No defects recorded</i>									
Safety Inspection of NSW M8 Polmadie Safety Inspection Route on 15 June 2021									
<i>No defects recorded</i>									
Detailed Inspection TEMPLATE of NSW M8E Polmadie Detail Inspection Route on 27 May 2021									
NSW92-650032-567	320m	330m	CARRIAGEWAY	Bituminous surfacing fretting (BFRT)	CAT 2		Cat 2 Awaiting Action		
NSW92-650032-568	406m	0m	TRAFFIC_SIGNS	Missing (MISS)	CAT 2		Cat 2 Awaiting Action		
NSW92-650032-569	405m	0m	TRAFFIC_SIGNS	Damaged (DAMG)	CAT 2		Cat 2 Awaiting Action		
NSW92-650032-566	293m	0m	HARDSHOULDER	Debris in hard shoulder (DBHS)	CAT 2		Cat 2 Awaiting Action		
Annual Detailed Inspection - Carriageways of NSW M8E Polmadie Detail Inspection Route									
<i>No defects recorded</i>									
Annual Detailed Inspection - Drainage Grips of NSW M8E Polmadie Detail Inspection Route									
<i>No defects recorded</i>									
CR Detailed Inspection - Covers, Gratings and Frames of NSW M8E Polmadie Detail Inspection Route									
<i>No defects recorded</i>									
CR Detailed Inspection - Filter Drains and Soakaways of NSW M8E Polmadie Detail Inspection Route									

Defect Reference	Start m	End m	Item Type	Item Detail	Defect Category	Required Completion Date	Current Status	Completion Date	Location Description
<i>No defects recorded</i>									
CR Detailed Inspection - Carriageways of NSW M8E Polmadie Detail Inspection Route									
<i>No defects recorded</i>									
CR Detailed Inspection - Kerbs, Channels, Edgings of NSW M8E Polmadie Detail Inspection Route									
<i>No defects recorded</i>									
CR Detailed Inspection - Carriageways of NSW M8E Polmadie Detail Inspection Route									
<i>No defects recorded</i>									
Detailed Inspection - All other Footways of NSW M8E Polmadie Detail Inspection Route									
<i>No defects recorded</i>									
Detailed Inspection - All signs of NSW M8E Polmadie Detail Inspection Route									
<i>No defects recorded</i>									
Detailed Inspection - Covers, Gratings and Frames of NSW M8E Polmadie Detail Inspection Route									
<i>No defects recorded</i>									
Detailed Inspection - Ditches of NSW M8E Polmadie Detail Inspection Route									
<i>No defects recorded</i>									
Detailed Inspection - Fences, Walls, Screens etc of NSW M8E Polmadie Detail Inspection Route									
<i>No defects recorded</i>									
Detailed Inspection - Filter Drains and Soakaways of NSW M8E Polmadie Detail Inspection Route									
<i>No defects recorded</i>									
Detailed Inspection - Geotechnical Assets of NSW M8E Polmadie Detail Inspection Route									
<i>No defects recorded</i>									
Detailed Inspection - Kerbs, Channels, Edgings of NSW M8E Polmadie Detail Inspection Route									
<i>No defects recorded</i>									
Detailed Inspection - Linear Drainage Systems of NSW M8E Polmadie Detail Inspection Route									
<i>No defects recorded</i>									
Detailed Inspection - Node Markers of NSW M8E Polmadie Detail Inspection Route									
<i>No defects recorded</i>									
Detailed Inspection - Pedestrian Restraint Systems of NSW M8E Polmadie Detail Inspection Route									
<i>No defects recorded</i>									
CR Detailed Inspection - Carriageways of NSW M8E Polmadie Detail Inspection Route									
<i>No defects recorded</i>									
Safety Patrol of NSW M8 Polmadie Summer Safety Patrol Route on 19 June 2021									
<i>No defects recorded</i>									
Safety Inspection of NSW M8 Polmadie Safety Inspection Route on 22 June 2021									
<i>No defects recorded</i>									
Safety Inspection of NSW M8 Polmadie Safety Inspection Route on 29 June 2021									
<i>No defects recorded</i>									
Detailed Inspection TEMPLATE of NSW M8E Polmadie Detail Inspection Route on 30 June 2021									
<i>No defects recorded</i>									
Detailed Inspection growing season - Grassed Areas of NSW M8E Polmadie Detail Inspection Route									
<i>No defects recorded</i>									
Detailed Inspection - Bulb and Wildflower Areas of NSW M8E Polmadie Detail Inspection Route									
<i>No defects recorded</i>									
Detailed Inspection - Scrub, shrub and hedges of NSW M8E Polmadie Detail Inspection Route									
<i>No defects recorded</i>									

Defect Reference	Start m	End m	Item Type	Item Detail	Defect Category	Required Completion Date	Current Status	Completion Date	Location Description
Detailed Inspection - Invasive Species of NSW M8E Polmadie Detail Inspection Route									
<i>No defects recorded</i>									
Detailed Inspection - Woodland areas and Trees of NSW M8E Polmadie Detail Inspection Route									
<i>No defects recorded</i>									
Safety Inspection of NSW M8 Polmadie Safety Inspection Route on 06 July 2021									
<i>No defects recorded</i>									
Safety Patrol of NSW M8 Polmadie Summer Safety Patrol Route on 07 July 2021									
<i>No defects recorded</i>									
Safety Patrol of NSW M8 Polmadie Summer Safety Patrol Route on 07 July 2021									
<i>No defects recorded</i>									
Safety Patrol of NSW M8 Polmadie Summer Safety Patrol Route on 10 July 2021									
<i>No defects recorded</i>									
Night Safety Inspection 28 day - Signs and lighting of NSW M8 Polmadie Night Inspection Route on 13 July 2021									
NSW76-683587-238128183	401m	0m	TRAFFIC_SIGNS	Missing (MISS)	CAT 1	15/07/2021	Completed Defects	14/07/2021	M8 JCT13 OFFSLIP W/B
NSW76-683587-238128184	398m	0m	TRAFFIC_SIGNS	Lamp failure (LAMP)	CAT 1	15/07/2021	Completed Defects	14/07/2021	M8 JCT13 OFFSLIP W/B
Safety Inspection of NSW M8 Polmadie Safety Inspection Route on 13 July 2021									
<i>No defects recorded</i>									
Safety Patrol of NSW M8 Polmadie Summer Safety Patrol Route on 17 July 2021									
<i>No defects recorded</i>									
Safety Inspection of NSW M8 Polmadie Safety Inspection Route on 20 July 2021									
<i>No defects recorded</i>									
Safety Patrol of NSW M8 Polmadie Summer Safety Patrol Route on 24 July 2021									
<i>No defects recorded</i>									
Safety Inspection of NSW M8 Polmadie Safety Inspection Route on 27 July 2021									
<i>No defects recorded</i>									
Safety Patrol of NSW M8 Polmadie Summer Safety Patrol Route on 31 July 2021									
<i>No defects recorded</i>									
Safety Inspection of NSW M8 Polmadie Safety Inspection Route on 03 August 2021									
<i>No defects recorded</i>									
Safety Patrol of NSW M8 Polmadie Summer Safety Patrol Route on 07 August 2021									
<i>No defects recorded</i>									
Night Safety Inspection 28 day - Signs and lighting of NSW M8 Polmadie Night Inspection Route on 10 August 2021									
<i>No defects recorded</i>									
Safety Inspection of NSW M8 Polmadie Safety Inspection Route on 10 August 2021									
<i>No defects recorded</i>									
Safety Patrol of NSW M8 Polmadie Summer Safety Patrol Route on 14 August 2021									
<i>No defects recorded</i>									
Safety Inspection of NSW M8 Polmadie Safety Inspection Route on 17 August 2021									
<i>No defects recorded</i>									
Safety Patrol of NSW M8 Polmadie Summer Safety Patrol Route on 21 August 2021									
<i>No defects recorded</i>									

Defect Reference	Start m	End m	Item Type	Item Detail	Defect Category	Required Completion Date	Current Status	Completion Date	Location Description
Safety Inspection of NSW M8 Polmadie Safety Inspection Route on 24 August 2021									
<i>No defects recorded</i>									
Safety Patrol of NSW M8 Polmadie Summer Safety Patrol Route on 28 August 2021									
<i>No defects recorded</i>									
Safety Inspection of NSW M8 Polmadie Safety Inspection Route on 31 August 2021									
<i>No defects recorded</i>									
Safety Patrol of NSW M8 Polmadie Summer Safety Patrol Route on 04 September 2021									
<i>No defects recorded</i>									
Night Safety Inspection 28 day - Signs and lighting of NSW M8 Polmadie Night Inspection Route on 07 September 2021									
<i>No defects recorded</i>									
Safety Inspection of NSW M8 Polmadie Safety Inspection Route on 07 September 2021									
<i>No defects recorded</i>									
Safety Patrol of NSW M8 Polmadie Summer Safety Patrol Route on 11 September 2021									
<i>No defects recorded</i>									
Safety Inspection of NSW M8 Polmadie Safety Inspection Route on 14 September 2021									
<i>No defects recorded</i>									
Safety Patrol of NSW M8 Polmadie Summer Safety Patrol Route on 18 September 2021									
<i>No defects recorded</i>									
Safety Inspection of NSW M8 Polmadie Safety Inspection Route on 21 September 2021									
<i>No defects recorded</i>									
Safety Patrol of NSW M8 Polmadie Summer Safety Patrol Route on 25 September 2021									
<i>No defects recorded</i>									
Safety Inspection of NSW M8 Polmadie Safety Inspection Route on 28 September 2021									
<i>No defects recorded</i>									
Safety Patrol of NSW M8 Polmadie Winter Safety Patrol Route on 02 October 2021									
<i>No defects recorded</i>									
Safety Inspection of NSW M8 Polmadie Safety Inspection Route on 05 October 2021									
<i>No defects recorded</i>									
Night Safety Inspection 14 day - Signs and lighting of NSW M8 Polmadie Night Inspection Route on 05 October 2021									
<i>No defects recorded</i>									
Safety Patrol of NSW M8 Polmadie Winter Safety Patrol Route on 09 October 2021									
<i>No defects recorded</i>									
Reactive Defect Recorded 11/10/2021 20:29:27									
D-NSW21238426229	161m	161m	REMOVE_ANIMAL	Carcass of dead animal (DEAD)	CAT 1	12/10/2021	Completed Defects	11/10/2021	M8 W/B J13 offslip
Safety Inspection of NSW M8 Polmadie Safety Inspection Route on 12 October 2021									
<i>No defects recorded</i>									
Safety Patrol of NSW M8 Polmadie Winter Safety Patrol Route on 16 October 2021									
<i>No defects recorded</i>									
Safety Inspection of NSW M8 Polmadie Safety Inspection Route on 19 October 2021									
<i>No defects recorded</i>									
Safety Patrol of NSW M8 Polmadie Winter Safety Patrol Route on 23 October 2021									
<i>No defects recorded</i>									
Visual Inspection During Darkness - Road Markings of NSW M8E Polmadie Detail Inspection Route on 25 October 2021									



Defect Reference	Start m	End m	Item Type	Item Detail	Defect Category	Required Completion Date	Current Status	Completion Date	Location Description
<i>No defects recorded</i>									
Safety Inspection of NSW M8 Polmadie Safety Inspection Route on 26 October 2021									
<i>No defects recorded</i>									
Visual Inspection During Daylight - Road Studs of NSW M8E Polmadie Detail Inspection Route on 27 October 2021									
NSW92-705795-17	140m	190m	ROAD_STUDS	Missing (MISS)	CAT 2		Cat 2 Awaiting Action		
NSW92-705795-18	140m	190m	ROAD_STUDS	Missing (MISS)	CAT 2		Cat 2 Awaiting Action		
Visual Inspection During Daylight - Road Markings of NSW M8E Polmadie Detail Inspection Route on 27 October 2021									
<i>No defects recorded</i>									
Safety Patrol of NSW M8 Polmadie Winter Safety Patrol Route on 30 October 2021									
<i>No defects recorded</i>									
Safety Inspection of NSW M8 Polmadie Safety Inspection Route on 02 November 2021									
<i>No defects recorded</i>									
Night Safety Inspection 14 day - Signs and lighting of NSW M8 Polmadie Night Inspection Route on 02 November 2021									
<i>No defects recorded</i>									
Safety Patrol of NSW M8 Polmadie Winter Safety Patrol Route on 06 November 2021									
<i>No defects recorded</i>									
Safety Inspection of NSW M8 Polmadie Safety Inspection Route on 09 November 2021									
<i>No defects recorded</i>									
Safety Patrol of NSW M8 Polmadie Winter Safety Patrol Route on 13 November 2021									
<i>No defects recorded</i>									
Night Safety Inspection 14 day - Signs and lighting of NSW M8 Polmadie Night Inspection Route on 16 November 2021									
<i>No defects recorded</i>									
Safety Inspection of NSW M8 Polmadie Safety Inspection Route on 16 November 2021									
<i>No defects recorded</i>									
Safety Patrol of NSW M8 Polmadie Winter Safety Patrol Route on 20 November 2021									
<i>No defects recorded</i>									
Safety Inspection of NSW M8 Polmadie Safety Inspection Route on 23 November 2021									
<i>No defects recorded</i>									
Safety Patrol of NSW M8 Polmadie Winter Safety Patrol Route on 27 November 2021									
<i>No defects recorded</i>									
Night Safety Inspection 14 day - Signs and lighting of NSW M8 Polmadie Night Inspection Route on 30 November 2021									
<i>No defects recorded</i>									
Safety Inspection of NSW M8 Polmadie Safety Inspection Route on 30 November 2021									
<i>No defects recorded</i>									
Safety Patrol of NSW M8 Polmadie Winter Safety Patrol Route on 04 December 2021									
<i>No defects recorded</i>									
Safety Inspection of NSW M8 Polmadie Safety Inspection Route on 07 December 2021									
<i>No defects recorded</i>									
Safety Patrol of NSW M8 Polmadie Winter Safety Patrol Route on 10 December 2021									
<i>No defects recorded</i>									
Night Safety Inspection 14 day - Signs and lighting of NSW M8 Polmadie Night Inspection Route on 14 December 2021									

Defect Reference	Start m	End m	Item Type	Item Detail	Defect Category	Required Completion Date	Current Status	Completion Date	Location Description
<i>No defects recorded</i>									
Safety Inspection of NSW M8 Polmadie Safety Inspection Route on 14 December 2021									
<i>No defects recorded</i>									
Safety Patrol of NSW M8 Polmadie Winter Safety Patrol Route on 17 December 2021									
<i>No defects recorded</i>									
Safety Inspection of NSW M8 Polmadie Safety Inspection Route on 21 December 2021									
<i>No defects recorded</i>									
Safety Patrol of NSW M8 Polmadie Winter Safety Patrol Route on 24 December 2021									
<i>No defects recorded</i>									
Night Safety Inspection 14 day - Signs and lighting of NSW M8 Polmadie Night Inspection Route on 28 December 2021									
<i>No defects recorded</i>									
Safety Inspection of NSW M8 Polmadie Safety Inspection Route on 28 December 2021									
<i>No defects recorded</i>									
Safety Patrol of NSW M8 Polmadie Winter Safety Patrol Route on 31 December 2021									
<i>No defects recorded</i>									
Safety Inspection of NSW M8 Polmadie Safety Inspection Route on 04 January 2022									
<i>No defects recorded</i>									
Safety Patrol of NSW M8 Polmadie Winter Safety Patrol Route on 07 January 2022									
<i>No defects recorded</i>									
Night Safety Inspection 14 day - Signs and lighting of NSW M8 Polmadie Night Inspection Route on 11 January 2022									
<i>No defects recorded</i>									
Safety Inspection of NSW M8 Polmadie Safety Inspection Route on 11 January 2022									
<i>No defects recorded</i>									
Safety Patrol of NSW M8 Polmadie Winter Safety Patrol Route on 14 January 2022									
<i>No defects recorded</i>									
Safety Inspection of NSW M8 Polmadie Safety Inspection Route on 18 January 2022									
<i>No defects recorded</i>									
Safety Patrol of NSW M8 Polmadie Winter Safety Patrol Route on 21 January 2022									
<i>No defects recorded</i>									
Night Safety Inspection 14 day - Signs and lighting of NSW M8 Polmadie Night Inspection Route on 25 January 2022									
<i>No defects recorded</i>									
Safety Inspection of NSW M8 Polmadie Safety Inspection Route on 25 January 2022									
<i>No defects recorded</i>									
Safety Patrol of NSW M8 Polmadie Winter Safety Patrol Route on 28 January 2022									
<i>No defects recorded</i>									
Safety Inspection of NSW M8 Polmadie Safety Inspection Route on 01 February 2022									
<i>No defects recorded</i>									
Safety Patrol of NSW M8 Polmadie Winter Safety Patrol Route on 04 February 2022									
<i>No defects recorded</i>									
Night Safety Inspection 14 day - Signs and lighting of NSW M8 Polmadie Night Inspection Route on 31 January 2022									
<i>No defects recorded</i>									
Safety Inspection of NSW M8 Polmadie Safety Inspection Route on 11 February 2022									
<i>No defects recorded</i>									
Safety Patrol of NSW M8 Polmadie Winter Safety Patrol Route on 11 February 2022									
<i>No defects recorded</i>									

Defect Reference	Start m	End m	Item Type	Item Detail	Defect Category	Required Completion Date	Current Status	Completion Date	Location Description
Safety Inspection of NSW M8 Polmadie Safety Inspection Route on 15 February 2022									
<i>No defects recorded</i>									
Safety Patrol of NSW M8 Polmadie Winter Safety Patrol Route on 18 February 2022									
<i>No defects recorded</i>									
Reactive Defect Recorded 21/02/2022 22:01:32									
D-NSW22238591455	0m	0m	CARRIAGEWAY	Debris in traffic Lane (DBTL)	CAT 1	22/02/2022	Completed Defects	21/02/2022	M8(W) J13 L2
Night Safety Inspection 14 day - Signs and lighting of NSW M8 Polmadie Night Inspection Route on 22 February 2022									
<i>No defects recorded</i>									
Safety Inspection of NSW M8 Polmadie Safety Inspection Route on 22 February 2022									
<i>No defects recorded</i>									
Safety Patrol of NSW M8 Polmadie Winter Safety Patrol Route on 25 February 2022									
<i>No defects recorded</i>									
Safety Inspection of NSW M8 Polmadie Safety Inspection Route on 01 March 2022									
<i>No defects recorded</i>									
Safety Patrol of NSW M8 Polmadie Winter Safety Patrol Route on 04 March 2022									
<i>No defects recorded</i>									
Safety Inspection of NSW M8 Polmadie Safety Inspection Route on 08 March 2022									
<i>No defects recorded</i>									
Night Safety Inspection 14 day - Signs and lighting of NSW M8 Polmadie Night Inspection Route on 08 March 2022									
<i>No defects recorded</i>									
Safety Patrol of NSW M8 Polmadie Winter Safety Patrol Route on 11 March 2022									
<i>No defects recorded</i>									
Reactive Defect Recorded 12/03/2022 19:07:21									
D-NSW22238609352	207m	207m	CARRIAGEWAY	Pothole VIAFIX (POTV)	CAT 1	09/04/2022	Completed Defects	21/03/2022	M8 Jct13 Offslip
Safety Inspection of NSW M8 Polmadie Safety Inspection Route on 15 March 2022									
<i>No defects recorded</i>									
Safety Patrol of NSW M8 Polmadie Winter Safety Patrol Route on 18 March 2022									
<i>No defects recorded</i>									
Visual Inspection During Darkness - Road Markings of NSW M8E Polmadie Detail Inspection Route on 18 March 2022									
<i>No defects recorded</i>									
Reflective Conspicuity Inspection - Road Studs of NSW M8E Polmadie Detail Inspection Route on 19 March 2022									
<i>No defects recorded</i>									
Night Safety Inspection 14 day - Signs and lighting of NSW M8 Polmadie Night Inspection Route on 22 March 2022									
<i>No defects recorded</i>									
Safety Inspection of NSW M8 Polmadie Safety Inspection Route on 22 March 2022									
<i>No defects recorded</i>									
Safety Patrol of NSW M8 Polmadie Winter Safety Patrol Route on 25 March 2022									
<i>No defects recorded</i>									
Safety Inspection of NSW M8 Polmadie Safety Inspection Route on 29 March 2022									
<i>No defects recorded</i>									
Visual Inspection During Daylight - Road Markings of NSW M8E Polmadie Detail Inspection Route on 31 March 2022									

Defect Reference	Start m	End m	Item Type	Item Detail	Defect Category	Required Completion Date	Current Status	Completion Date	Location Description
No defects recorded									
Visual Inspection During Daylight - Road Studs of NSW M8E Polmadie Detail Inspection Route on 31 March 2022									
No defects recorded									



Inspection Defect Summary Report



Defect Reference	Start m	End m	Item Type	Item Detail	Defect Category	Required Completion Date	Current Status	Completion Date	Location Description
14225/11 : WITH: M80 INTERCHANGE SLIP WB									
Safety Inspection of M8 Glasgow East V1 on 04 August 2020									
<i>No defects recorded</i>									
Safety Inspection of M8 Glasgow East V1 on 11 August 2020									
<i>No defects recorded</i>									
Night Safety Inspection 28 day - Signs and lighting of M8 Glasgow East V1 on 11 August 2020									
<i>No defects recorded</i>									
Safety Inspection of NSW M8 Polmadie Safety Inspection Route on 29 September 2020									
<i>No defects recorded</i>									
Safety Patrol of NSW M8 Polmadie Winter Safety Patrol Route on 03 October 2020									
<i>No defects recorded</i>									
Safety Inspection of NSW M8 Polmadie Safety Inspection Route on 06 October 2020									
<i>No defects recorded</i>									
Night Safety Inspection 14 day - Signs and lighting of NSW M8 Polmadie Night Inspection Route on 06 October 2020									
<i>No defects recorded</i>									
Safety Patrol of NSW M8 Polmadie Winter Safety Patrol Route on 10 October 2020									
<i>No defects recorded</i>									
Safety Inspection of NSW M8 Polmadie Safety Inspection Route on 13 October 2020									
<i>No defects recorded</i>									
Safety Patrol of NSW M8 Polmadie Winter Safety Patrol Route on 17 October 2020									
<i>No defects recorded</i>									
Safety Inspection of NSW M8 Polmadie Safety Inspection Route on 20 October 2020									
<i>No defects recorded</i>									
Night Safety Inspection 14 day - Signs and lighting of NSW M8 Polmadie Night Inspection Route on 20 October 2020									
<i>No defects recorded</i>									
Safety Patrol of NSW M8 Polmadie Winter Safety Patrol Route on 24 October 2020									
<i>No defects recorded</i>									
Safety Inspection of NSW M8 Polmadie Safety Inspection Route on 27 October 2020									
<i>No defects recorded</i>									
Safety Patrol of NSW M8 Polmadie Winter Safety Patrol Route on 31 October 2020									
<i>No defects recorded</i>									
Safety Inspection of NSW M8 Polmadie Safety Inspection Route on 03 November 2020									
<i>No defects recorded</i>									
Night Safety Inspection 14 day - Signs and lighting of NSW M8 Polmadie Night Inspection Route on 04 November 2020									
<i>No defects recorded</i>									
Safety Patrol of NSW M8 Polmadie Winter Safety Patrol Route on 03 October 2020									
<i>No defects recorded</i>									

Defect Reference	Start m	End m	Item Type	Item Detail	Defect Category	Required Completion Date	Current Status	Completion Date	Location Description
Safety Inspection of NSW M8 Polmadie Safety Inspection Route on 10 November 2020									
<i>No defects recorded</i>									
Safety Patrol of NSW M8 Polmadie Winter Safety Patrol Route on 14 November 2020									
<i>No defects recorded</i>									
Safety Inspection of NSW M8 Polmadie Safety Inspection Route on 17 November 2020									
<i>No defects recorded</i>									
Night Safety Inspection 14 day - Signs and lighting of NSW M8 Polmadie Night Inspection Route on 17 November 2020									
<i>No defects recorded</i>									
Safety Patrol of NSW M8 Polmadie Winter Safety Patrol Route on 21 November 2020									
<i>No defects recorded</i>									
Safety Inspection of NSW M8 Polmadie Safety Inspection Route on 24 November 2020									
<i>No defects recorded</i>									
Safety Patrol of NSW M8 Polmadie Winter Safety Patrol Route on 28 November 2020									
<i>No defects recorded</i>									
Safety Inspection of NSW M8 Polmadie Safety Inspection Route on 01 December 2020									
<i>No defects recorded</i>									
Night Safety Inspection 14 day - Signs and lighting of NSW M8 Polmadie Night Inspection Route on 01 December 2020									
<i>No defects recorded</i>									
Safety Patrol of NSW M8 Polmadie Winter Safety Patrol Route on 05 December 2020									
<i>No defects recorded</i>									
Safety Inspection of NSW M8 Polmadie Safety Inspection Route on 08 December 2020									
<i>No defects recorded</i>									
Safety Patrol of NSW M8 Polmadie Winter Safety Patrol Route on 12 December 2020									
<i>No defects recorded</i>									
Safety Inspection of NSW M8 Polmadie Safety Inspection Route on 15 December 2020									
<i>No defects recorded</i>									
Night Safety Inspection 14 day - Signs and lighting of NSW M8 Polmadie Night Inspection Route on 15 December 2020									
<i>No defects recorded</i>									
Reflective Conspicuity Inspection - Road Studs of NSW M8E Polmadie Detail Inspection Route on 16 December 2020									
<i>No defects recorded</i>									
Safety Patrol of NSW M8 Polmadie Winter Safety Patrol Route on 19 December 2020									
<i>No defects recorded</i>									
Safety Inspection of NSW M8 Polmadie Safety Inspection Route on 22 December 2020									
<i>No defects recorded</i>									
Safety Patrol of NSW M8 Polmadie Winter Safety Patrol Route on 26 December 2020									
<i>No defects recorded</i>									
Safety Inspection of NSW M8 Polmadie Safety Inspection Route on 29 December 2020									
<i>No defects recorded</i>									
Night Safety Inspection 14 day - Signs and lighting of NSW M8 Polmadie Night Inspection Route on 30 December 2020									
<i>No defects recorded</i>									
Safety Patrol of NSW M8 Polmadie Winter Safety Patrol Route on 02 January 2021									
<i>No defects recorded</i>									
Safety Inspection of NSW M8 Polmadie Safety Inspection Route on 05 January 2021									
<i>No defects recorded</i>									
Safety Patrol of NSW M8 Polmadie Winter Safety Patrol Route on 09 January 2021									



Defect Reference	Start m	End m	Item Type	Item Detail	Defect Category	Required Completion Date	Current Status	Completion Date	Location Description
<i>No defects recorded</i>									
Night Safety Inspection 14 day - Signs and lighting of NSW M8 Polmadie Night Inspection Route on 12 January 2021									
<i>No defects recorded</i>									
Safety Inspection of NSW M8 Polmadie Safety Inspection Route on 12 January 2021									
<i>No defects recorded</i>									
Safety Patrol of NSW M8 Polmadie Winter Safety Patrol Route on 16 January 2021									
<i>No defects recorded</i>									
Safety Inspection of NSW M8 Polmadie Safety Inspection Route on 18 January 2021									
<i>No defects recorded</i>									
Safety Patrol of NSW M8 Polmadie Winter Safety Patrol Route on 23 January 2021									
<i>No defects recorded</i>									
Safety Inspection of NSW M8 Polmadie Safety Inspection Route on 26 January 2021									
<i>No defects recorded</i>									
Safety Patrol of NSW M8 Polmadie Winter Safety Patrol Route on 30 January 2021									
<i>No defects recorded</i>									
Safety Inspection of NSW M8 Polmadie Safety Inspection Route on 02 February 2021									
<i>No defects recorded</i>									
Safety Patrol of NSW M8 Polmadie Winter Safety Patrol Route on 06 February 2021									
<i>No defects recorded</i>									
Night Safety Inspection 14 day - Signs and lighting of NSW M8 Polmadie Night Inspection Route on 09 February 2021									
<i>No defects recorded</i>									
Safety Inspection of NSW M8 Polmadie Safety Inspection Route on 09 February 2021									
<i>No defects recorded</i>									
Safety Patrol of NSW M8 Polmadie Winter Safety Patrol Route on 13 February 2021									
<i>No defects recorded</i>									
Safety Inspection of NSW M8 Polmadie Safety Inspection Route on 16 February 2021									
<i>No defects recorded</i>									
Safety Patrol of NSW M8 Polmadie Winter Safety Patrol Route on 20 February 2021									
<i>No defects recorded</i>									
Safety Inspection of NSW M8 Polmadie Safety Inspection Route on 23 February 2021									
<i>No defects recorded</i>									
Night Safety Inspection 14 day - Signs and lighting of NSW M8 Polmadie Night Inspection Route on 23 February 2021									
<i>No defects recorded</i>									
Visual Inspection During Daylight - Road Studs of NSW M8E Polmadie Detail Inspection Route on 26 February 2021									
<i>No defects recorded</i>									
Visual Inspection During Daylight - Road Markings of NSW M8E Polmadie Detail Inspection Route on 26 February 2021									
<i>No defects recorded</i>									
Safety Patrol of NSW M8 Polmadie Winter Safety Patrol Route on 27 February 2021									
<i>No defects recorded</i>									
Safety Inspection of NSW M8 Polmadie Safety Inspection Route on 02 March 2021									
<i>No defects recorded</i>									
Safety Patrol of NSW M8 Polmadie Winter Safety Patrol Route on 06 March 2021									
<i>No defects recorded</i>									
Night Safety Inspection 14 day - Signs and lighting of NSW M8 Polmadie Night Inspection Route on 09 March 2021									
<i>No defects recorded</i>									

Defect Reference	Start m	End m	Item Type	Item Detail	Defect Category	Required Completion Date	Current Status	Completion Date	Location Description
Safety Inspection of NSW M8 Polmadie Safety Inspection Route on 09 March 2021									
<i>No defects recorded</i>									
Safety Patrol of NSW M8 Polmadie Winter Safety Patrol Route on 13 March 2021									
<i>No defects recorded</i>									
Safety Inspection of NSW M8 Polmadie Safety Inspection Route on 16 March 2021									
<i>No defects recorded</i>									
Safety Patrol of NSW M8 Polmadie Winter Safety Patrol Route on 20 March 2021									
<i>No defects recorded</i>									
Night Safety Inspection 14 day - Signs and lighting of NSW M8 Polmadie Night Inspection Route on 23 March 2021									
<i>No defects recorded</i>									
Safety Inspection of NSW M8 Polmadie Safety Inspection Route on 23 March 2021									
<i>No defects recorded</i>									
Safety Patrol of NSW M8 Polmadie Winter Safety Patrol Route on 27 March 2021									
<i>No defects recorded</i>									
Safety Inspection of NSW M8 Polmadie Safety Inspection Route on 30 March 2021									
<i>No defects recorded</i>									
Visual Inspection During Darkness - Road Markings of NSW M8E Polmadie Detail Inspection Route on 31 March 2021									
<i>No defects recorded</i>									
Safety Patrol of NSW M8 Polmadie Summer Safety Patrol Route on 03 April 2021									
<i>No defects recorded</i>									
Safety Inspection of NSW M8 Polmadie Safety Inspection Route on 06 April 2021									
<i>No defects recorded</i>									
Safety Patrol of NSW M8 Polmadie Summer Safety Patrol Route on 10 April 2021									
<i>No defects recorded</i>									
Safety Inspection of NSW M8 Polmadie Safety Inspection Route on 13 April 2021									
<i>No defects recorded</i>									
Safety Patrol of NSW M8 Polmadie Summer Safety Patrol Route on 17 April 2021									
<i>No defects recorded</i>									
Night Safety Inspection 28 day - Signs and lighting of NSW M8 Polmadie Night Inspection Route on 20 April 2021									
<i>No defects recorded</i>									
Safety Inspection of NSW M8 Polmadie Safety Inspection Route on 20 April 2021									
<i>No defects recorded</i>									
Safety Patrol of NSW M8 Polmadie Summer Safety Patrol Route on 24 April 2021									
<i>No defects recorded</i>									
Safety Inspection of NSW M8 Polmadie Safety Inspection Route on 27 April 2021									
<i>No defects recorded</i>									
Safety Patrol of NSW M8 Polmadie Summer Safety Patrol Route on 01 May 2021									
<i>No defects recorded</i>									
Safety Inspection of NSW M8 Polmadie Safety Inspection Route on 04 May 2021									
<i>No defects recorded</i>									
Safety Patrol of NSW M8 Polmadie Summer Safety Patrol Route on 08 May 2021									
<i>No defects recorded</i>									
Safety Inspection of NSW M8 Polmadie Safety Inspection Route on 11 May 2021									
<i>No defects recorded</i>									
Safety Patrol of NSW M8 Polmadie Summer Safety Patrol Route on 15 May 2021									



Defect Reference	Start m	End m	Item Type	Item Detail	Defect Category	Required Completion Date	Current Status	Completion Date	Location Description
<i>No defects recorded</i>									
Safety Inspection of NSW M8 Polmadie Safety Inspection Route on 18 May 2021									
<i>No defects recorded</i>									
Night Safety Inspection 28 day - Signs and lighting of NSW M8 Polmadie Night Inspection Route on 18 May 2021									
<i>No defects recorded</i>									
Safety Patrol of NSW M8 Polmadie Summer Safety Patrol Route on 22 May 2021									
<i>No defects recorded</i>									
Safety Inspection of NSW M8 Polmadie Safety Inspection Route on 25 May 2021									
<i>No defects recorded</i>									
Safety Patrol of NSW M8 Polmadie Summer Safety Patrol Route on 29 May 2021									
<i>No defects recorded</i>									
Safety Inspection of NSW M8 Polmadie Safety Inspection Route on 01 June 2021									
<i>No defects recorded</i>									
Safety Patrol of NSW M8 Polmadie Summer Safety Patrol Route on 05 June 2021									
<i>No defects recorded</i>									
Safety Inspection of NSW M8 Polmadie Safety Inspection Route on 08 June 2021									
<i>No defects recorded</i>									
Safety Patrol of NSW M8 Polmadie Summer Safety Patrol Route on 12 June 2021									
<i>No defects recorded</i>									
Safety Inspection of NSW M8 Polmadie Safety Inspection Route on 15 June 2021									
<i>No defects recorded</i>									
Night Safety Inspection 28 day - Signs and lighting of NSW M8 Polmadie Night Inspection Route on 15 June 2021									
<i>No defects recorded</i>									
Detailed Inspection TEMPLATE of NSW M8E Polmadie Detail Inspection Route on 27 May 2021									
<i>No defects recorded</i>									
Annual Detailed Inspection - Carriageways of NSW M8E Polmadie Detail Inspection Route									
<i>No defects recorded</i>									
Annual Detailed Inspection - Drainage Grips of NSW M8E Polmadie Detail Inspection Route									
<i>No defects recorded</i>									
CR Detailed Inspection - Covers, Gratings and Frames of NSW M8E Polmadie Detail Inspection Route									
<i>No defects recorded</i>									
CR Detailed Inspection - Filter Drains and Soakaways of NSW M8E Polmadie Detail Inspection Route									
<i>No defects recorded</i>									
CR Detailed Inspection - Carriageways of NSW M8E Polmadie Detail Inspection Route									
<i>No defects recorded</i>									
CR Detailed Inspection - Kerbs, Channels, Edgings of NSW M8E Polmadie Detail Inspection Route									
<i>No defects recorded</i>									
CR Detailed Inspection - Carriageways of NSW M8E Polmadie Detail Inspection Route									
<i>No defects recorded</i>									
Detailed Inspection - All other Footways of NSW M8E Polmadie Detail Inspection Route									
<i>No defects recorded</i>									
Detailed Inspection - All signs of NSW M8E Polmadie Detail Inspection Route									
<i>No defects recorded</i>									
Detailed Inspection - Covers, Gratings and Frames of NSW M8E Polmadie Detail Inspection Route									
<i>No defects recorded</i>									

Defect Reference	Start m	End m	Item Type	Item Detail	Defect Category	Required Completion Date	Current Status	Completion Date	Location Description
Detailed Inspection - Ditches of NSW M8E Polmadie Detail Inspection Route									
<i>No defects recorded</i>									
Detailed Inspection - Fences, Walls, Screens etc of NSW M8E Polmadie Detail Inspection Route									
<i>No defects recorded</i>									
Detailed Inspection - Filter Drains and Soakaways of NSW M8E Polmadie Detail Inspection Route									
<i>No defects recorded</i>									
Detailed Inspection - Geotechnical Assets of NSW M8E Polmadie Detail Inspection Route									
<i>No defects recorded</i>									
Detailed Inspection - Kerbs, Channels, Edgings of NSW M8E Polmadie Detail Inspection Route									
<i>No defects recorded</i>									
Detailed Inspection - Linear Drainage Systems of NSW M8E Polmadie Detail Inspection Route									
<i>No defects recorded</i>									
Detailed Inspection - Node Markers of NSW M8E Polmadie Detail Inspection Route									
<i>No defects recorded</i>									
Detailed Inspection - Pedestrian Restraint Systems of NSW M8E Polmadie Detail Inspection Route									
<i>No defects recorded</i>									
CR Detailed Inspection - Carriageways of NSW M8E Polmadie Detail Inspection Route									
<i>No defects recorded</i>									
Safety Patrol of NSW M8 Polmadie Summer Safety Patrol Route on 19 June 2021									
<i>No defects recorded</i>									
Safety Inspection of NSW M8 Polmadie Safety Inspection Route on 22 June 2021									
<i>No defects recorded</i>									
Safety Inspection of NSW M8 Polmadie Safety Inspection Route on 29 June 2021									
<i>No defects recorded</i>									
Detailed Inspection TEMPLATE of NSW M8E Polmadie Detail Inspection Route on 30 June 2021									
<i>No defects recorded</i>									
Detailed Inspection growing season - Grassed Areas of NSW M8E Polmadie Detail Inspection Route									
<i>No defects recorded</i>									
Detailed Inspection - Bulb and Wildflower Areas of NSW M8E Polmadie Detail Inspection Route									
<i>No defects recorded</i>									
Detailed Inspection - Scrub, shrub and hedges of NSW M8E Polmadie Detail Inspection Route									
<i>No defects recorded</i>									
Detailed Inspection - Invasive Species of NSW M8E Polmadie Detail Inspection Route									
<i>No defects recorded</i>									
Detailed Inspection - Woodland areas and Trees of NSW M8E Polmadie Detail Inspection Route									
<i>No defects recorded</i>									
Safety Inspection of NSW M8 Polmadie Safety Inspection Route on 06 July 2021									
<i>No defects recorded</i>									
Safety Patrol of NSW M8 Polmadie Summer Safety Patrol Route on 07 July 2021									
<i>No defects recorded</i>									
Safety Patrol of NSW M8 Polmadie Summer Safety Patrol Route on 07 July 2021									
<i>No defects recorded</i>									
Safety Patrol of NSW M8 Polmadie Summer Safety Patrol Route on 10 July 2021									
<i>No defects recorded</i>									
Night Safety Inspection 28 day - Signs and lighting of NSW M8 Polmadie Night Inspection Route on 13 July 2021									

Defect Reference	Start m	End m	Item Type	Item Detail	Defect Category	Required Completion Date	Current Status	Completion Date	Location Description
<i>No defects recorded</i>									
Safety Inspection of NSW M8 Polmadie Safety Inspection Route on 13 July 2021									
<i>No defects recorded</i>									
Safety Patrol of NSW M8 Polmadie Summer Safety Patrol Route on 17 July 2021									
<i>No defects recorded</i>									
Safety Inspection of NSW M8 Polmadie Safety Inspection Route on 20 July 2021									
<i>No defects recorded</i>									
Safety Patrol of NSW M8 Polmadie Summer Safety Patrol Route on 24 July 2021									
<i>No defects recorded</i>									
Safety Inspection of NSW M8 Polmadie Safety Inspection Route on 27 July 2021									
<i>No defects recorded</i>									
Safety Patrol of NSW M8 Polmadie Summer Safety Patrol Route on 31 July 2021									
<i>No defects recorded</i>									
Safety Inspection of NSW M8 Polmadie Safety Inspection Route on 03 August 2021									
<i>No defects recorded</i>									
Safety Patrol of NSW M8 Polmadie Summer Safety Patrol Route on 07 August 2021									
<i>No defects recorded</i>									
Night Safety Inspection 28 day - Signs and lighting of NSW M8 Polmadie Night Inspection Route on 10 August 2021									
<i>No defects recorded</i>									
Safety Inspection of NSW M8 Polmadie Safety Inspection Route on 10 August 2021									
<i>No defects recorded</i>									
Safety Patrol of NSW M8 Polmadie Summer Safety Patrol Route on 14 August 2021									
<i>No defects recorded</i>									
Safety Inspection of NSW M8 Polmadie Safety Inspection Route on 17 August 2021									
<i>No defects recorded</i>									
Safety Patrol of NSW M8 Polmadie Summer Safety Patrol Route on 21 August 2021									
<i>No defects recorded</i>									
Safety Inspection of NSW M8 Polmadie Safety Inspection Route on 24 August 2021									
<i>No defects recorded</i>									
Safety Patrol of NSW M8 Polmadie Summer Safety Patrol Route on 28 August 2021									
<i>No defects recorded</i>									
Safety Inspection of NSW M8 Polmadie Safety Inspection Route on 31 August 2021									
<i>No defects recorded</i>									
Safety Patrol of NSW M8 Polmadie Summer Safety Patrol Route on 04 September 2021									
<i>No defects recorded</i>									
Night Safety Inspection 28 day - Signs and lighting of NSW M8 Polmadie Night Inspection Route on 07 September 2021									
<i>No defects recorded</i>									
Safety Inspection of NSW M8 Polmadie Safety Inspection Route on 07 September 2021									
<i>No defects recorded</i>									
Safety Patrol of NSW M8 Polmadie Summer Safety Patrol Route on 11 September 2021									
<i>No defects recorded</i>									
Safety Inspection of NSW M8 Polmadie Safety Inspection Route on 14 September 2021									
<i>No defects recorded</i>									
Safety Patrol of NSW M8 Polmadie Summer Safety Patrol Route on 18 September 2021									
<i>No defects recorded</i>									

Defect Reference	Start m	End m	Item Type	Item Detail	Defect Category	Required Completion Date	Current Status	Completion Date	Location Description
Safety Inspection of NSW M8 Polmadie Safety Inspection Route on 21 September 2021									
<i>No defects recorded</i>									
Safety Patrol of NSW M8 Polmadie Summer Safety Patrol Route on 25 September 2021									
<i>No defects recorded</i>									
Safety Inspection of NSW M8 Polmadie Safety Inspection Route on 28 September 2021									
<i>No defects recorded</i>									
Safety Patrol of NSW M8 Polmadie Winter Safety Patrol Route on 02 October 2021									
<i>No defects recorded</i>									
Safety Inspection of NSW M8 Polmadie Safety Inspection Route on 05 October 2021									
<i>No defects recorded</i>									
Night Safety Inspection 14 day - Signs and lighting of NSW M8 Polmadie Night Inspection Route on 05 October 2021									
<i>No defects recorded</i>									
Safety Patrol of NSW M8 Polmadie Winter Safety Patrol Route on 09 October 2021									
<i>No defects recorded</i>									
Safety Inspection of NSW M8 Polmadie Safety Inspection Route on 12 October 2021									
<i>No defects recorded</i>									
Safety Patrol of NSW M8 Polmadie Winter Safety Patrol Route on 16 October 2021									
<i>No defects recorded</i>									
Safety Inspection of NSW M8 Polmadie Safety Inspection Route on 19 October 2021									
<i>No defects recorded</i>									
Safety Patrol of NSW M8 Polmadie Winter Safety Patrol Route on 23 October 2021									
<i>No defects recorded</i>									
Visual Inspection During Darkness - Road Markings of NSW M8E Polmadie Detail Inspection Route on 25 October 2021									
<i>No defects recorded</i>									
Safety Inspection of NSW M8 Polmadie Safety Inspection Route on 26 October 2021									
<i>No defects recorded</i>									
Visual Inspection During Daylight - Road Studs of NSW M8E Polmadie Detail Inspection Route on 27 October 2021									
<i>No defects recorded</i>									
Visual Inspection During Daylight - Road Markings of NSW M8E Polmadie Detail Inspection Route on 27 October 2021									
<i>No defects recorded</i>									
Safety Patrol of NSW M8 Polmadie Winter Safety Patrol Route on 30 October 2021									
<i>No defects recorded</i>									
Safety Inspection of NSW M8 Polmadie Safety Inspection Route on 02 November 2021									
<i>No defects recorded</i>									
Night Safety Inspection 14 day - Signs and lighting of NSW M8 Polmadie Night Inspection Route on 02 November 2021									
<i>No defects recorded</i>									
Safety Patrol of NSW M8 Polmadie Winter Safety Patrol Route on 06 November 2021									
<i>No defects recorded</i>									
Safety Inspection of NSW M8 Polmadie Safety Inspection Route on 09 November 2021									
<i>No defects recorded</i>									
Safety Patrol of NSW M8 Polmadie Winter Safety Patrol Route on 13 November 2021									
<i>No defects recorded</i>									
Night Safety Inspection 14 day - Signs and lighting of NSW M8 Polmadie Night Inspection Route on 16 November 2021									
<i>No defects recorded</i>									
Safety Inspection of NSW M8 Polmadie Safety Inspection Route on 16 November 2021									

Defect Reference	Start m	End m	Item Type	Item Detail	Defect Category	Required Completion Date	Current Status	Completion Date	Location Description
<i>No defects recorded</i>									
Safety Patrol of NSW M8 Polmadie Winter Safety Patrol Route on 20 November 2021									
<i>No defects recorded</i>									
Safety Inspection of NSW M8 Polmadie Safety Inspection Route on 23 November 2021									
<i>No defects recorded</i>									
Safety Patrol of NSW M8 Polmadie Winter Safety Patrol Route on 27 November 2021									
<i>No defects recorded</i>									
Safety Inspection of NSW M8 Polmadie Safety Inspection Route on 30 November 2021									
<i>No defects recorded</i>									
Night Safety Inspection 14 day - Signs and lighting of NSW M8 Polmadie Night Inspection Route on 30 November 2021									
<i>No defects recorded</i>									
Safety Patrol of NSW M8 Polmadie Winter Safety Patrol Route on 04 December 2021									
<i>No defects recorded</i>									
Safety Inspection of NSW M8 Polmadie Safety Inspection Route on 07 December 2021									
<i>No defects recorded</i>									
Safety Patrol of NSW M8 Polmadie Winter Safety Patrol Route on 10 December 2021									
<i>No defects recorded</i>									
Safety Inspection of NSW M8 Polmadie Safety Inspection Route on 14 December 2021									
<i>No defects recorded</i>									
Night Safety Inspection 14 day - Signs and lighting of NSW M8 Polmadie Night Inspection Route on 14 December 2021									
<i>No defects recorded</i>									
Safety Patrol of NSW M8 Polmadie Winter Safety Patrol Route on 17 December 2021									
<i>No defects recorded</i>									
Safety Inspection of NSW M8 Polmadie Safety Inspection Route on 21 December 2021									
<i>No defects recorded</i>									
Safety Patrol of NSW M8 Polmadie Winter Safety Patrol Route on 24 December 2021									
<i>No defects recorded</i>									
Night Safety Inspection 14 day - Signs and lighting of NSW M8 Polmadie Night Inspection Route on 28 December 2021									
<i>No defects recorded</i>									
Safety Inspection of NSW M8 Polmadie Safety Inspection Route on 28 December 2021									
<i>No defects recorded</i>									
Safety Patrol of NSW M8 Polmadie Winter Safety Patrol Route on 31 December 2021									
<i>No defects recorded</i>									
Safety Inspection of NSW M8 Polmadie Safety Inspection Route on 04 January 2022									
<i>No defects recorded</i>									
Safety Patrol of NSW M8 Polmadie Winter Safety Patrol Route on 07 January 2022									
<i>No defects recorded</i>									
Night Safety Inspection 14 day - Signs and lighting of NSW M8 Polmadie Night Inspection Route on 11 January 2022									
<i>No defects recorded</i>									
Safety Inspection of NSW M8 Polmadie Safety Inspection Route on 11 January 2022									
<i>No defects recorded</i>									
Safety Patrol of NSW M8 Polmadie Winter Safety Patrol Route on 14 January 2022									
<i>No defects recorded</i>									
Safety Inspection of NSW M8 Polmadie Safety Inspection Route on 18 January 2022									
<i>No defects recorded</i>									

Defect Reference	Start m	End m	Item Type	Item Detail	Defect Category	Required Completion Date	Current Status	Completion Date	Location Description
Safety Patrol of NSW M8 Polmadie Winter Safety Patrol Route on 21 January 2022									
<i>No defects recorded</i>									
Night Safety Inspection 14 day - Signs and lighting of NSW M8 Polmadie Night Inspection Route on 25 January 2022									
<i>No defects recorded</i>									
Safety Inspection of NSW M8 Polmadie Safety Inspection Route on 25 January 2022									
<i>No defects recorded</i>									
Safety Patrol of NSW M8 Polmadie Winter Safety Patrol Route on 28 January 2022									
<i>No defects recorded</i>									
Safety Inspection of NSW M8 Polmadie Safety Inspection Route on 01 February 2022									
<i>No defects recorded</i>									
Safety Patrol of NSW M8 Polmadie Winter Safety Patrol Route on 04 February 2022									
<i>No defects recorded</i>									
Night Safety Inspection 14 day - Signs and lighting of NSW M8 Polmadie Night Inspection Route on 31 January 2022									
<i>No defects recorded</i>									
Safety Inspection of NSW M8 Polmadie Safety Inspection Route on 11 February 2022									
<i>No defects recorded</i>									
Safety Patrol of NSW M8 Polmadie Winter Safety Patrol Route on 11 February 2022									
<i>No defects recorded</i>									
Safety Inspection of NSW M8 Polmadie Safety Inspection Route on 15 February 2022									
<i>No defects recorded</i>									
Safety Patrol of NSW M8 Polmadie Winter Safety Patrol Route on 18 February 2022									
<i>No defects recorded</i>									
Night Safety Inspection 14 day - Signs and lighting of NSW M8 Polmadie Night Inspection Route on 22 February 2022									
<i>No defects recorded</i>									
Safety Inspection of NSW M8 Polmadie Safety Inspection Route on 22 February 2022									
<i>No defects recorded</i>									
Safety Patrol of NSW M8 Polmadie Winter Safety Patrol Route on 25 February 2022									
<i>No defects recorded</i>									
Safety Inspection of NSW M8 Polmadie Safety Inspection Route on 01 March 2022									
<i>No defects recorded</i>									
Safety Patrol of NSW M8 Polmadie Winter Safety Patrol Route on 04 March 2022									
<i>No defects recorded</i>									
Safety Inspection of NSW M8 Polmadie Safety Inspection Route on 08 March 2022									
<i>No defects recorded</i>									
Night Safety Inspection 14 day - Signs and lighting of NSW M8 Polmadie Night Inspection Route on 08 March 2022									
<i>No defects recorded</i>									
Safety Patrol of NSW M8 Polmadie Winter Safety Patrol Route on 11 March 2022									
<i>No defects recorded</i>									
Safety Inspection of NSW M8 Polmadie Safety Inspection Route on 15 March 2022									
<i>No defects recorded</i>									
Safety Patrol of NSW M8 Polmadie Winter Safety Patrol Route on 18 March 2022									
<i>No defects recorded</i>									
Visual Inspection During Darkness - Road Markings of NSW M8E Polmadie Detail Inspection Route on 18 March 2022									
<i>No defects recorded</i>									
Reflective Conspicuity Inspection - Road Studs of NSW M8E Polmadie Detail Inspection Route on 19 March 2022									

Defect Reference	Start m	End m	Item Type	Item Detail	Defect Category	Required Completion Date	Current Status	Completion Date	Location Description
No defects recorded									
Night Safety Inspection 14 day - Signs and lighting of NSW M8 Polmadie Night Inspection Route on 22 March 2022									
No defects recorded									
Safety Inspection of NSW M8 Polmadie Safety Inspection Route on 22 March 2022									
No defects recorded									
Safety Patrol of NSW M8 Polmadie Winter Safety Patrol Route on 25 March 2022									
No defects recorded									
Safety Inspection of NSW M8 Polmadie Safety Inspection Route on 29 March 2022									
No defects recorded									
Visual Inspection During Daylight - Road Markings of NSW M8E Polmadie Detail Inspection Route on 31 March 2022									
No defects recorded									
Visual Inspection During Daylight - Road Studs of NSW M8E Polmadie Detail Inspection Route on 31 March 2022									
No defects recorded									



Inspection Defect Summary Report



Defect Reference	Start m	End m	Item Type	Item Detail	Defect Category	Required Completion Date	Current Status	Completion Date	Location Description
14225/16 : WITH: M80 INT SLIP WB									
Safety Inspection of M8 Glasgow East V1 on 04 August 2020									
<i>No defects recorded</i>									
Safety Inspection of M8 Glasgow East V1 on 11 August 2020									
<i>No defects recorded</i>									
Night Safety Inspection 28 day - Signs and lighting of M8 Glasgow East V1 on 11 August 2020									
<i>No defects recorded</i>									
Safety Inspection of NSW M8 Polmadie Safety Inspection Route on 29 September 2020									
<i>No defects recorded</i>									
Safety Patrol of NSW M8 Polmadie Winter Safety Patrol Route on 03 October 2020									
<i>No defects recorded</i>									
Safety Inspection of NSW M8 Polmadie Safety Inspection Route on 06 October 2020									
<i>No defects recorded</i>									
Night Safety Inspection 14 day - Signs and lighting of NSW M8 Polmadie Night Inspection Route on 06 October 2020									
<i>No defects recorded</i>									
Safety Patrol of NSW M8 Polmadie Winter Safety Patrol Route on 10 October 2020									
<i>No defects recorded</i>									
Safety Inspection of NSW M8 Polmadie Safety Inspection Route on 13 October 2020									
<i>No defects recorded</i>									
Safety Patrol of NSW M8 Polmadie Winter Safety Patrol Route on 17 October 2020									
<i>No defects recorded</i>									
Safety Inspection of NSW M8 Polmadie Safety Inspection Route on 20 October 2020									
<i>No defects recorded</i>									
Night Safety Inspection 14 day - Signs and lighting of NSW M8 Polmadie Night Inspection Route on 20 October 2020									
<i>No defects recorded</i>									
Safety Patrol of NSW M8 Polmadie Winter Safety Patrol Route on 24 October 2020									
<i>No defects recorded</i>									
Safety Inspection of NSW M8 Polmadie Safety Inspection Route on 27 October 2020									
<i>No defects recorded</i>									
Safety Patrol of NSW M8 Polmadie Winter Safety Patrol Route on 31 October 2020									
<i>No defects recorded</i>									
Safety Inspection of NSW M8 Polmadie Safety Inspection Route on 03 November 2020									
<i>No defects recorded</i>									
Night Safety Inspection 14 day - Signs and lighting of NSW M8 Polmadie Night Inspection Route on 04 November 2020									
<i>No defects recorded</i>									
Safety Patrol of NSW M8 Polmadie Winter Safety Patrol Route on 03 October 2020									
<i>No defects recorded</i>									

Defect Reference	Start m	End m	Item Type	Item Detail	Defect Category	Required Completion Date	Current Status	Completion Date	Location Description
Safety Inspection of NSW M8 Polmadie Safety Inspection Route on 10 November 2020									
<i>No defects recorded</i>									
Safety Patrol of NSW M8 Polmadie Winter Safety Patrol Route on 14 November 2020									
<i>No defects recorded</i>									
Safety Inspection of NSW M8 Polmadie Safety Inspection Route on 17 November 2020									
<i>No defects recorded</i>									
Night Safety Inspection 14 day - Signs and lighting of NSW M8 Polmadie Night Inspection Route on 17 November 2020									
<i>No defects recorded</i>									
Safety Patrol of NSW M8 Polmadie Winter Safety Patrol Route on 21 November 2020									
<i>No defects recorded</i>									
Safety Inspection of NSW M8 Polmadie Safety Inspection Route on 24 November 2020									
<i>No defects recorded</i>									
Safety Patrol of NSW M8 Polmadie Winter Safety Patrol Route on 28 November 2020									
<i>No defects recorded</i>									
Safety Inspection of NSW M8 Polmadie Safety Inspection Route on 01 December 2020									
<i>No defects recorded</i>									
Night Safety Inspection 14 day - Signs and lighting of NSW M8 Polmadie Night Inspection Route on 01 December 2020									
<i>No defects recorded</i>									
Safety Patrol of NSW M8 Polmadie Winter Safety Patrol Route on 05 December 2020									
<i>No defects recorded</i>									
Safety Inspection of NSW M8 Polmadie Safety Inspection Route on 08 December 2020									
<i>No defects recorded</i>									
Safety Patrol of NSW M8 Polmadie Winter Safety Patrol Route on 12 December 2020									
<i>No defects recorded</i>									
Safety Inspection of NSW M8 Polmadie Safety Inspection Route on 15 December 2020									
<i>No defects recorded</i>									
Night Safety Inspection 14 day - Signs and lighting of NSW M8 Polmadie Night Inspection Route on 15 December 2020									
<i>No defects recorded</i>									
Reflective Conspicuity Inspection - Road Studs of NSW M8E Polmadie Detail Inspection Route on 16 December 2020									
<i>No defects recorded</i>									
Safety Patrol of NSW M8 Polmadie Winter Safety Patrol Route on 19 December 2020									
<i>No defects recorded</i>									
Safety Inspection of NSW M8 Polmadie Safety Inspection Route on 22 December 2020									
<i>No defects recorded</i>									
Safety Patrol of NSW M8 Polmadie Winter Safety Patrol Route on 26 December 2020									
<i>No defects recorded</i>									
Safety Inspection of NSW M8 Polmadie Safety Inspection Route on 29 December 2020									
<i>No defects recorded</i>									
Night Safety Inspection 14 day - Signs and lighting of NSW M8 Polmadie Night Inspection Route on 30 December 2020									
<i>No defects recorded</i>									
Safety Patrol of NSW M8 Polmadie Winter Safety Patrol Route on 02 January 2021									
<i>No defects recorded</i>									
Safety Inspection of NSW M8 Polmadie Safety Inspection Route on 05 January 2021									
<i>No defects recorded</i>									
Safety Patrol of NSW M8 Polmadie Winter Safety Patrol Route on 09 January 2021									



Defect Reference	Start m	End m	Item Type	Item Detail	Defect Category	Required Completion Date	Current Status	Completion Date	Location Description
<i>No defects recorded</i>									
Night Safety Inspection 14 day - Signs and lighting of NSW M8 Polmadie Night Inspection Route on 12 January 2021									
<i>No defects recorded</i>									
Safety Inspection of NSW M8 Polmadie Safety Inspection Route on 12 January 2021									
<i>No defects recorded</i>									
Safety Patrol of NSW M8 Polmadie Winter Safety Patrol Route on 16 January 2021									
<i>No defects recorded</i>									
Safety Inspection of NSW M8 Polmadie Safety Inspection Route on 18 January 2021									
<i>No defects recorded</i>									
Safety Patrol of NSW M8 Polmadie Winter Safety Patrol Route on 23 January 2021									
<i>No defects recorded</i>									
Safety Inspection of NSW M8 Polmadie Safety Inspection Route on 26 January 2021									
<i>No defects recorded</i>									
Safety Patrol of NSW M8 Polmadie Winter Safety Patrol Route on 30 January 2021									
<i>No defects recorded</i>									
Safety Inspection of NSW M8 Polmadie Safety Inspection Route on 02 February 2021									
<i>No defects recorded</i>									
Safety Patrol of NSW M8 Polmadie Winter Safety Patrol Route on 06 February 2021									
<i>No defects recorded</i>									
Night Safety Inspection 14 day - Signs and lighting of NSW M8 Polmadie Night Inspection Route on 09 February 2021									
<i>No defects recorded</i>									
Safety Inspection of NSW M8 Polmadie Safety Inspection Route on 09 February 2021									
<i>No defects recorded</i>									
Safety Patrol of NSW M8 Polmadie Winter Safety Patrol Route on 13 February 2021									
<i>No defects recorded</i>									
Safety Inspection of NSW M8 Polmadie Safety Inspection Route on 16 February 2021									
<i>No defects recorded</i>									
Safety Patrol of NSW M8 Polmadie Winter Safety Patrol Route on 20 February 2021									
<i>No defects recorded</i>									
Safety Inspection of NSW M8 Polmadie Safety Inspection Route on 23 February 2021									
<i>No defects recorded</i>									
Night Safety Inspection 14 day - Signs and lighting of NSW M8 Polmadie Night Inspection Route on 23 February 2021									
<i>No defects recorded</i>									
Visual Inspection During Daylight - Road Studs of NSW M8E Polmadie Detail Inspection Route on 26 February 2021									
<i>No defects recorded</i>									
Visual Inspection During Daylight - Road Markings of NSW M8E Polmadie Detail Inspection Route on 26 February 2021									
<i>No defects recorded</i>									
Safety Patrol of NSW M8 Polmadie Winter Safety Patrol Route on 27 February 2021									
<i>No defects recorded</i>									
Safety Inspection of NSW M8 Polmadie Safety Inspection Route on 02 March 2021									
<i>No defects recorded</i>									
Safety Patrol of NSW M8 Polmadie Winter Safety Patrol Route on 06 March 2021									
<i>No defects recorded</i>									
Night Safety Inspection 14 day - Signs and lighting of NSW M8 Polmadie Night Inspection Route on 09 March 2021									
<i>No defects recorded</i>									

Defect Reference	Start m	End m	Item Type	Item Detail	Defect Category	Required Completion Date	Current Status	Completion Date	Location Description
Safety Inspection of NSW M8 Polmadie Safety Inspection Route on 09 March 2021									
<i>No defects recorded</i>									
Safety Patrol of NSW M8 Polmadie Winter Safety Patrol Route on 13 March 2021									
<i>No defects recorded</i>									
Safety Inspection of NSW M8 Polmadie Safety Inspection Route on 16 March 2021									
<i>No defects recorded</i>									
Safety Patrol of NSW M8 Polmadie Winter Safety Patrol Route on 20 March 2021									
<i>No defects recorded</i>									
Night Safety Inspection 14 day - Signs and lighting of NSW M8 Polmadie Night Inspection Route on 23 March 2021									
<i>No defects recorded</i>									
Safety Inspection of NSW M8 Polmadie Safety Inspection Route on 23 March 2021									
<i>No defects recorded</i>									
Safety Patrol of NSW M8 Polmadie Winter Safety Patrol Route on 27 March 2021									
<i>No defects recorded</i>									
Safety Inspection of NSW M8 Polmadie Safety Inspection Route on 30 March 2021									
<i>No defects recorded</i>									
Visual Inspection During Darkness - Road Markings of NSW M8E Polmadie Detail Inspection Route on 31 March 2021									
<i>No defects recorded</i>									
Safety Patrol of NSW M8 Polmadie Summer Safety Patrol Route on 03 April 2021									
<i>No defects recorded</i>									
Safety Inspection of NSW M8 Polmadie Safety Inspection Route on 06 April 2021									
<i>No defects recorded</i>									
Safety Patrol of NSW M8 Polmadie Summer Safety Patrol Route on 10 April 2021									
<i>No defects recorded</i>									
Safety Inspection of NSW M8 Polmadie Safety Inspection Route on 13 April 2021									
<i>No defects recorded</i>									
Safety Patrol of NSW M8 Polmadie Summer Safety Patrol Route on 17 April 2021									
<i>No defects recorded</i>									
Safety Inspection of NSW M8 Polmadie Safety Inspection Route on 20 April 2021									
<i>No defects recorded</i>									
Night Safety Inspection 28 day - Signs and lighting of NSW M8 Polmadie Night Inspection Route on 20 April 2021									
<i>No defects recorded</i>									
Safety Patrol of NSW M8 Polmadie Summer Safety Patrol Route on 24 April 2021									
<i>No defects recorded</i>									
Safety Inspection of NSW M8 Polmadie Safety Inspection Route on 27 April 2021									
<i>No defects recorded</i>									
Safety Patrol of NSW M8 Polmadie Summer Safety Patrol Route on 01 May 2021									
<i>No defects recorded</i>									
Safety Inspection of NSW M8 Polmadie Safety Inspection Route on 04 May 2021									
<i>No defects recorded</i>									
Safety Patrol of NSW M8 Polmadie Summer Safety Patrol Route on 08 May 2021									
<i>No defects recorded</i>									
Safety Inspection of NSW M8 Polmadie Safety Inspection Route on 11 May 2021									
<i>No defects recorded</i>									
Safety Patrol of NSW M8 Polmadie Summer Safety Patrol Route on 15 May 2021									



Defect Reference	Start m	End m	Item Type	Item Detail	Defect Category	Required Completion Date	Current Status	Completion Date	Location Description
<i>No defects recorded</i>									
Safety Inspection of NSW M8 Polmadie Safety Inspection Route on 18 May 2021									
<i>No defects recorded</i>									
Night Safety Inspection 28 day - Signs and lighting of NSW M8 Polmadie Night Inspection Route on 18 May 2021									
<i>No defects recorded</i>									
Safety Patrol of NSW M8 Polmadie Summer Safety Patrol Route on 22 May 2021									
<i>No defects recorded</i>									
Safety Inspection of NSW M8 Polmadie Safety Inspection Route on 25 May 2021									
<i>No defects recorded</i>									
Safety Patrol of NSW M8 Polmadie Summer Safety Patrol Route on 29 May 2021									
<i>No defects recorded</i>									
Safety Inspection of NSW M8 Polmadie Safety Inspection Route on 01 June 2021									
<i>No defects recorded</i>									
Safety Patrol of NSW M8 Polmadie Summer Safety Patrol Route on 05 June 2021									
<i>No defects recorded</i>									
Safety Inspection of NSW M8 Polmadie Safety Inspection Route on 08 June 2021									
<i>No defects recorded</i>									
Safety Patrol of NSW M8 Polmadie Summer Safety Patrol Route on 12 June 2021									
<i>No defects recorded</i>									
Safety Inspection of NSW M8 Polmadie Safety Inspection Route on 15 June 2021									
<i>No defects recorded</i>									
Night Safety Inspection 28 day - Signs and lighting of NSW M8 Polmadie Night Inspection Route on 15 June 2021									
<i>No defects recorded</i>									
Detailed Inspection TEMPLATE of NSW M8E Polmadie Detail Inspection Route on 27 May 2021									
NSW92-650032-570	19m	22m	KERB	Damaged (DAMG)	CAT 2		Cat 2 Awaiting Action		
NSW92-650032-571	15m	25m	KERB	Weed growth (WEED)	CAT 2		Cat 2 Awaiting Action		
Annual Detailed Inspection - Carriageways of NSW M8E Polmadie Detail Inspection Route									
<i>No defects recorded</i>									
Annual Detailed Inspection - Drainage Grips of NSW M8E Polmadie Detail Inspection Route									
<i>No defects recorded</i>									
CR Detailed Inspection - Covers, Gratings and Frames of NSW M8E Polmadie Detail Inspection Route									
<i>No defects recorded</i>									
CR Detailed Inspection - Filter Drains and Soakaways of NSW M8E Polmadie Detail Inspection Route									
<i>No defects recorded</i>									
CR Detailed Inspection - Carriageways of NSW M8E Polmadie Detail Inspection Route									
<i>No defects recorded</i>									
CR Detailed Inspection - Kerbs, Channels, Edgings of NSW M8E Polmadie Detail Inspection Route									
<i>No defects recorded</i>									
CR Detailed Inspection - Carriageways of NSW M8E Polmadie Detail Inspection Route									
<i>No defects recorded</i>									
Detailed Inspection - All other Footways of NSW M8E Polmadie Detail Inspection Route									

Defect Reference	Start m	End m	Item Type	Item Detail	Defect Category	Required Completion Date	Current Status	Completion Date	Location Description
<i>No defects recorded</i>									
Detailed Inspection - All signs of NSW M8E Polmadie Detail Inspection Route									
<i>No defects recorded</i>									
Detailed Inspection - Covers, Gratings and Frames of NSW M8E Polmadie Detail Inspection Route									
<i>No defects recorded</i>									
Detailed Inspection - Ditches of NSW M8E Polmadie Detail Inspection Route									
<i>No defects recorded</i>									
Detailed Inspection - Fences, Walls, Screens etc of NSW M8E Polmadie Detail Inspection Route									
<i>No defects recorded</i>									
Detailed Inspection - Filter Drains and Soakaways of NSW M8E Polmadie Detail Inspection Route									
<i>No defects recorded</i>									
Detailed Inspection - Geotechnical Assets of NSW M8E Polmadie Detail Inspection Route									
<i>No defects recorded</i>									
Detailed Inspection - Kerbs, Channels, Edgings of NSW M8E Polmadie Detail Inspection Route									
<i>No defects recorded</i>									
Detailed Inspection - Linear Drainage Systems of NSW M8E Polmadie Detail Inspection Route									
<i>No defects recorded</i>									
Detailed Inspection - Node Markers of NSW M8E Polmadie Detail Inspection Route									
<i>No defects recorded</i>									
Detailed Inspection - Pedestrian Restraint Systems of NSW M8E Polmadie Detail Inspection Route									
<i>No defects recorded</i>									
CR Detailed Inspection - Carriageways of NSW M8E Polmadie Detail Inspection Route									
<i>No defects recorded</i>									
Safety Patrol of NSW M8 Polmadie Summer Safety Patrol Route on 19 June 2021									
<i>No defects recorded</i>									
Safety Inspection of NSW M8 Polmadie Safety Inspection Route on 22 June 2021									
<i>No defects recorded</i>									
Safety Inspection of NSW M8 Polmadie Safety Inspection Route on 29 June 2021									
<i>No defects recorded</i>									
Detailed Inspection TEMPLATE of NSW M8E Polmadie Detail Inspection Route on 30 June 2021									
<i>No defects recorded</i>									
Detailed Inspection growing season - Grassed Areas of NSW M8E Polmadie Detail Inspection Route									
<i>No defects recorded</i>									
Detailed Inspection - Bulb and Wildflower Areas of NSW M8E Polmadie Detail Inspection Route									
<i>No defects recorded</i>									
Detailed Inspection - Scrub, shrub and hedges of NSW M8E Polmadie Detail Inspection Route									
<i>No defects recorded</i>									
Detailed Inspection - Invasive Species of NSW M8E Polmadie Detail Inspection Route									
<i>No defects recorded</i>									
Detailed Inspection - Woodland areas and Trees of NSW M8E Polmadie Detail Inspection Route									
<i>No defects recorded</i>									
Safety Inspection of NSW M8 Polmadie Safety Inspection Route on 06 July 2021									
<i>No defects recorded</i>									
Safety Patrol of NSW M8 Polmadie Summer Safety Patrol Route on 07 July 2021									
<i>No defects recorded</i>									

Defect Reference	Start m	End m	Item Type	Item Detail	Defect Category	Required Completion Date	Current Status	Completion Date	Location Description
Safety Patrol of NSW M8 Polmadie Summer Safety Patrol Route on 07 July 2021									
<i>No defects recorded</i>									
Safety Patrol of NSW M8 Polmadie Summer Safety Patrol Route on 10 July 2021									
<i>No defects recorded</i>									
Night Safety Inspection 28 day - Signs and lighting of NSW M8 Polmadie Night Inspection Route on 13 July 2021									
<i>No defects recorded</i>									
Safety Inspection of NSW M8 Polmadie Safety Inspection Route on 13 July 2021									
<i>No defects recorded</i>									
Safety Patrol of NSW M8 Polmadie Summer Safety Patrol Route on 17 July 2021									
<i>No defects recorded</i>									
Safety Inspection of NSW M8 Polmadie Safety Inspection Route on 20 July 2021									
<i>No defects recorded</i>									
Safety Patrol of NSW M8 Polmadie Summer Safety Patrol Route on 24 July 2021									
<i>No defects recorded</i>									
Safety Inspection of NSW M8 Polmadie Safety Inspection Route on 27 July 2021									
<i>No defects recorded</i>									
Safety Patrol of NSW M8 Polmadie Summer Safety Patrol Route on 31 July 2021									
<i>No defects recorded</i>									
Safety Inspection of NSW M8 Polmadie Safety Inspection Route on 03 August 2021									
<i>No defects recorded</i>									
Safety Patrol of NSW M8 Polmadie Summer Safety Patrol Route on 07 August 2021									
<i>No defects recorded</i>									
Safety Inspection of NSW M8 Polmadie Safety Inspection Route on 10 August 2021									
<i>No defects recorded</i>									
Night Safety Inspection 28 day - Signs and lighting of NSW M8 Polmadie Night Inspection Route on 10 August 2021									
<i>No defects recorded</i>									
Safety Patrol of NSW M8 Polmadie Summer Safety Patrol Route on 14 August 2021									
<i>No defects recorded</i>									
Safety Inspection of NSW M8 Polmadie Safety Inspection Route on 17 August 2021									
<i>No defects recorded</i>									
Safety Patrol of NSW M8 Polmadie Summer Safety Patrol Route on 21 August 2021									
<i>No defects recorded</i>									
Safety Inspection of NSW M8 Polmadie Safety Inspection Route on 24 August 2021									
<i>No defects recorded</i>									
Safety Patrol of NSW M8 Polmadie Summer Safety Patrol Route on 28 August 2021									
<i>No defects recorded</i>									
Safety Inspection of NSW M8 Polmadie Safety Inspection Route on 31 August 2021									
<i>No defects recorded</i>									
Safety Patrol of NSW M8 Polmadie Summer Safety Patrol Route on 04 September 2021									
<i>No defects recorded</i>									
Safety Inspection of NSW M8 Polmadie Safety Inspection Route on 07 September 2021									
<i>No defects recorded</i>									
Night Safety Inspection 28 day - Signs and lighting of NSW M8 Polmadie Night Inspection Route on 07 September 2021									
<i>No defects recorded</i>									
Safety Patrol of NSW M8 Polmadie Summer Safety Patrol Route on 11 September 2021									

Defect Reference	Start m	End m	Item Type	Item Detail	Defect Category	Required Completion Date	Current Status	Completion Date	Location Description
<i>No defects recorded</i>									
Safety Inspection of NSW M8 Polmadie Safety Inspection Route on 14 September 2021									
<i>No defects recorded</i>									
Safety Patrol of NSW M8 Polmadie Summer Safety Patrol Route on 18 September 2021									
<i>No defects recorded</i>									
Safety Inspection of NSW M8 Polmadie Safety Inspection Route on 21 September 2021									
<i>No defects recorded</i>									
Safety Patrol of NSW M8 Polmadie Summer Safety Patrol Route on 25 September 2021									
<i>No defects recorded</i>									
Safety Inspection of NSW M8 Polmadie Safety Inspection Route on 28 September 2021									
<i>No defects recorded</i>									
Safety Patrol of NSW M8 Polmadie Winter Safety Patrol Route on 02 October 2021									
<i>No defects recorded</i>									
Safety Inspection of NSW M8 Polmadie Safety Inspection Route on 05 October 2021									
<i>No defects recorded</i>									
Night Safety Inspection 14 day - Signs and lighting of NSW M8 Polmadie Night Inspection Route on 05 October 2021									
<i>No defects recorded</i>									
Safety Patrol of NSW M8 Polmadie Winter Safety Patrol Route on 09 October 2021									
<i>No defects recorded</i>									
Safety Inspection of NSW M8 Polmadie Safety Inspection Route on 12 October 2021									
<i>No defects recorded</i>									
Safety Patrol of NSW M8 Polmadie Winter Safety Patrol Route on 16 October 2021									
<i>No defects recorded</i>									
Safety Inspection of NSW M8 Polmadie Safety Inspection Route on 19 October 2021									
<i>No defects recorded</i>									
Safety Patrol of NSW M8 Polmadie Winter Safety Patrol Route on 23 October 2021									
<i>No defects recorded</i>									
Visual Inspection During Darkness - Road Markings of NSW M8E Polmadie Detail Inspection Route on 25 October 2021									
<i>No defects recorded</i>									
Safety Inspection of NSW M8 Polmadie Safety Inspection Route on 26 October 2021									
<i>No defects recorded</i>									
Visual Inspection During Daylight - Road Studs of NSW M8E Polmadie Detail Inspection Route on 27 October 2021									
<i>No defects recorded</i>									
Visual Inspection During Daylight - Road Markings of NSW M8E Polmadie Detail Inspection Route on 27 October 2021									
<i>No defects recorded</i>									
Safety Patrol of NSW M8 Polmadie Winter Safety Patrol Route on 30 October 2021									
<i>No defects recorded</i>									
Safety Inspection of NSW M8 Polmadie Safety Inspection Route on 02 November 2021									
<i>No defects recorded</i>									
Night Safety Inspection 14 day - Signs and lighting of NSW M8 Polmadie Night Inspection Route on 02 November 2021									
<i>No defects recorded</i>									
Safety Patrol of NSW M8 Polmadie Winter Safety Patrol Route on 06 November 2021									
<i>No defects recorded</i>									
Safety Inspection of NSW M8 Polmadie Safety Inspection Route on 09 November 2021									
<i>No defects recorded</i>									

Defect Reference	Start m	End m	Item Type	Item Detail	Defect Category	Required Completion Date	Current Status	Completion Date	Location Description
Safety Patrol of NSW M8 Polmadie Winter Safety Patrol Route on 13 November 2021									
<i>No defects recorded</i>									
Safety Inspection of NSW M8 Polmadie Safety Inspection Route on 16 November 2021									
<i>No defects recorded</i>									
Night Safety Inspection 14 day - Signs and lighting of NSW M8 Polmadie Night Inspection Route on 16 November 2021									
<i>No defects recorded</i>									
Safety Patrol of NSW M8 Polmadie Winter Safety Patrol Route on 20 November 2021									
<i>No defects recorded</i>									
Safety Inspection of NSW M8 Polmadie Safety Inspection Route on 23 November 2021									
<i>No defects recorded</i>									
Safety Patrol of NSW M8 Polmadie Winter Safety Patrol Route on 27 November 2021									
<i>No defects recorded</i>									
Night Safety Inspection 14 day - Signs and lighting of NSW M8 Polmadie Night Inspection Route on 30 November 2021									
<i>No defects recorded</i>									
Safety Inspection of NSW M8 Polmadie Safety Inspection Route on 30 November 2021									
<i>No defects recorded</i>									
Safety Patrol of NSW M8 Polmadie Winter Safety Patrol Route on 04 December 2021									
<i>No defects recorded</i>									
Safety Inspection of NSW M8 Polmadie Safety Inspection Route on 07 December 2021									
<i>No defects recorded</i>									
Safety Patrol of NSW M8 Polmadie Winter Safety Patrol Route on 10 December 2021									
<i>No defects recorded</i>									
Safety Inspection of NSW M8 Polmadie Safety Inspection Route on 14 December 2021									
<i>No defects recorded</i>									
Night Safety Inspection 14 day - Signs and lighting of NSW M8 Polmadie Night Inspection Route on 14 December 2021									
<i>No defects recorded</i>									
Safety Patrol of NSW M8 Polmadie Winter Safety Patrol Route on 17 December 2021									
<i>No defects recorded</i>									
Safety Inspection of NSW M8 Polmadie Safety Inspection Route on 21 December 2021									
<i>No defects recorded</i>									
Safety Patrol of NSW M8 Polmadie Winter Safety Patrol Route on 24 December 2021									
<i>No defects recorded</i>									
Night Safety Inspection 14 day - Signs and lighting of NSW M8 Polmadie Night Inspection Route on 28 December 2021									
<i>No defects recorded</i>									
Safety Inspection of NSW M8 Polmadie Safety Inspection Route on 28 December 2021									
<i>No defects recorded</i>									
Safety Patrol of NSW M8 Polmadie Winter Safety Patrol Route on 31 December 2021									
<i>No defects recorded</i>									
Safety Inspection of NSW M8 Polmadie Safety Inspection Route on 04 January 2022									
<i>No defects recorded</i>									
Safety Patrol of NSW M8 Polmadie Winter Safety Patrol Route on 07 January 2022									
<i>No defects recorded</i>									
Safety Inspection of NSW M8 Polmadie Safety Inspection Route on 11 January 2022									
<i>No defects recorded</i>									
Night Safety Inspection 14 day - Signs and lighting of NSW M8 Polmadie Night Inspection Route on 11 January 2022									



Defect Reference	Start m	End m	Item Type	Item Detail	Defect Category	Required Completion Date	Current Status	Completion Date	Location Description
<i>No defects recorded</i>									
Safety Patrol of NSW M8 Polmadie Winter Safety Patrol Route on 14 January 2022									
<i>No defects recorded</i>									
Safety Inspection of NSW M8 Polmadie Safety Inspection Route on 18 January 2022									
<i>No defects recorded</i>									
Safety Patrol of NSW M8 Polmadie Winter Safety Patrol Route on 21 January 2022									
<i>No defects recorded</i>									
Night Safety Inspection 14 day - Signs and lighting of NSW M8 Polmadie Night Inspection Route on 25 January 2022									
<i>No defects recorded</i>									
Safety Inspection of NSW M8 Polmadie Safety Inspection Route on 25 January 2022									
<i>No defects recorded</i>									
Safety Patrol of NSW M8 Polmadie Winter Safety Patrol Route on 28 January 2022									
<i>No defects recorded</i>									
Safety Inspection of NSW M8 Polmadie Safety Inspection Route on 01 February 2022									
<i>No defects recorded</i>									
Safety Patrol of NSW M8 Polmadie Winter Safety Patrol Route on 04 February 2022									
<i>No defects recorded</i>									
Night Safety Inspection 14 day - Signs and lighting of NSW M8 Polmadie Night Inspection Route on 31 January 2022									
<i>No defects recorded</i>									
Safety Inspection of NSW M8 Polmadie Safety Inspection Route on 11 February 2022									
<i>No defects recorded</i>									
Safety Patrol of NSW M8 Polmadie Winter Safety Patrol Route on 11 February 2022									
<i>No defects recorded</i>									
Safety Inspection of NSW M8 Polmadie Safety Inspection Route on 15 February 2022									
<i>No defects recorded</i>									
Safety Patrol of NSW M8 Polmadie Winter Safety Patrol Route on 18 February 2022									
<i>No defects recorded</i>									
Night Safety Inspection 14 day - Signs and lighting of NSW M8 Polmadie Night Inspection Route on 22 February 2022									
<i>No defects recorded</i>									
Safety Inspection of NSW M8 Polmadie Safety Inspection Route on 22 February 2022									
<i>No defects recorded</i>									
Safety Patrol of NSW M8 Polmadie Winter Safety Patrol Route on 25 February 2022									
<i>No defects recorded</i>									
Safety Inspection of NSW M8 Polmadie Safety Inspection Route on 01 March 2022									
<i>No defects recorded</i>									
Safety Patrol of NSW M8 Polmadie Winter Safety Patrol Route on 04 March 2022									
<i>No defects recorded</i>									
Safety Inspection of NSW M8 Polmadie Safety Inspection Route on 08 March 2022									
<i>No defects recorded</i>									
Night Safety Inspection 14 day - Signs and lighting of NSW M8 Polmadie Night Inspection Route on 08 March 2022									
<i>No defects recorded</i>									
Safety Patrol of NSW M8 Polmadie Winter Safety Patrol Route on 11 March 2022									
<i>No defects recorded</i>									
Safety Inspection of NSW M8 Polmadie Safety Inspection Route on 15 March 2022									
<i>No defects recorded</i>									



Defect Reference	Start m	End m	Item Type	Item Detail	Defect Category	Required Completion Date	Current Status	Completion Date	Location Description
Safety Patrol of NSW M8 Polmadie Winter Safety Patrol Route on 18 March 2022									
<i>No defects recorded</i>									
Visual Inspection During Darkness - Road Markings of NSW M8E Polmadie Detail Inspection Route on 18 March 2022									
<i>No defects recorded</i>									
Reflective Conspicuity Inspection - Road Studs of NSW M8E Polmadie Detail Inspection Route on 19 March 2022									
<i>No defects recorded</i>									
Safety Inspection of NSW M8 Polmadie Safety Inspection Route on 22 March 2022									
<i>No defects recorded</i>									
Night Safety Inspection 14 day - Signs and lighting of NSW M8 Polmadie Night Inspection Route on 22 March 2022									
<i>No defects recorded</i>									
Safety Patrol of NSW M8 Polmadie Winter Safety Patrol Route on 25 March 2022									
<i>No defects recorded</i>									
Safety Inspection of NSW M8 Polmadie Safety Inspection Route on 29 March 2022									
<i>No defects recorded</i>									
Visual Inspection During Daylight - Road Markings of NSW M8E Polmadie Detail Inspection Route on 31 March 2022									
<i>No defects recorded</i>									
Visual Inspection During Daylight - Road Studs of NSW M8E Polmadie Detail Inspection Route on 31 March 2022									
<i>No defects recorded</i>									

[Edit Filters](#)

Insurance Report

Data as at: Jan 11 2024 10:45AM

Road = M8

Sections = 14225/10 - WITH: SLIP OFF M8 WB TO M80 INT, 14225/16 - WITH: M80 INT SLIP WB, 14225/11 - WITH: M80 INTERCHANGE SLIP WB, 14220/50 - WITH: JC T 12 ENTRY SLIP TO OFF SLIP AT JCT 13, 14225/05 - WITH: WB OFF SLIP TO M80 TO SLIP ON FROM M80

Date Range = 01/04/2022 - 09/01/2024

Inspection Activity = Safety Inspection, Safety Patrol, Night Time Illuminated Safety Inspection

Location	Defect Information	Status	Defects Raised	Defect Action	Repair Date	Chainage M
No Defects Recorded		Redacted - Regulation 11(2)	0			
1342569 NSW M8 Polmadie Safety Patrol Route (Thur 13-04-23) - Safety Patrol on 13/04/2023			0			
No Defects Recorded			0			
1342675 NSW M8 Polmadie Safety Inspection Route (Mon 17-04-23) - Safety Inspection on 17/04/2023			0			
No Defects Recorded			0			
1342884 NSW M8 Polmadie Safety Patrol Route (Thur 20-04-23) - Safety Patrol on 20/04/2023			0			
No Defects Recorded			0			
1342981 NSW M8 Polmadie Safety Inspection Route (Mon 24-04-23) - Safety Inspection on 24/04/2023			0			
No Defects Recorded			0			
1343177 NSW M8 Polmadie Safety Patrol Route (Thur 27-04-23) - Safety Patrol on 27/04/2023			0			
No Defects Recorded			0			
1343301 NSW M8 Polmadie Night Inspection Route (28 day) (R) - Night Time Illuminated Safety Inspection on 28/06/2023			0			
No Defects Recorded			0			
1343339 NSW M8 Polmadie Safety Inspection Route (Mon 01/05/23) - Safety Inspection on 01/05/2023			0			
No Defects Recorded			0			
1343640 NSW M8 Polmadie Safety Patrol Route (Thur 04/05/23) - Safety Patrol on 04/05/2023			0			
No Defects Recorded			0			
1343826 NSW M8 Polmadie Safety Inspection Route (Mon 08/05/23) - Safety Inspection on 08/05/2023			0			
No Defects Recorded			0			
1343977 NSW M8 Polmadie Safety Patrol Route (Thur 11/05/23) - Safety Patrol on 11/05/2023			0			
No Defects Recorded			0			
1344142 NSW M8 Polmadie Safety Inspection Route (Mon 15/05/23) - Safety Inspection on 15/05/2023			0			
No Defects Recorded			0			
1344342 NSW M8 Polmadie Safety Patrol Route (Thur 18/05/23) - Safety Patrol on 18/05/2023			0			
No Defects Recorded			0			
1344517 NSW M8 Polmadie Safety Inspection Route (Mon 22/05/23) - Safety Inspection on 22/05/2023			0			
No Defects Recorded			0			
1344917 NSW M8 Polmadie Safety Patrol Route (Thur) - Safety Patrol on 25/05/2023			0			
No Defects Recorded			0			
1345051 NSW M8 Polmadie Safety Inspection Route (Mon 29/05/23) - Safety Inspection on 29/05/2023			0			



Untensioned Steel VRS

Inspection Date & User Details

Inspected By	Redacted - Regulation 11(2)
Inspection Depot	Scotland
Inspection Date	26/07/2023

Location Information

Road Speed Limit	50 mph
Barrier Location	CR

Beam Starting Location

Beam Start Co-ordinates	55.86618°N, -4.22981°W - 26/07/2023
-------------------------	-------------------------------------

Beam Information

Type of Untensioned Corrugated Beam	Proprietary
Is Beam Double Sided?	No
Is Approach Terminal Present?	

General Checks

2a - Is the set-back within spec?	Yes
2b - Is the clearance behind the fence within spec?	Yes
2c - Are the mounting heights of each beam within tolerance?	Yes



Untensioned Steel VRS

2d - Is the whole installation free from any missing posts, bolts, screws or other components?	No
2d - If no, state location and degree of issue: See 4b for photos	
2e - Does the whole installation have a generally satisfactory flowing alignment?	Yes
2f - Is the ground profile in front of and behind the safety fence (in the clearance zone) generally level and free from obstacles, including redundant fence fixings?	Yes

Posts

3a - Are the posts at the correct spacing?	No
3a - If no, state location and degree of issue: Incorrect spacing in post.	



26/07/2023

3b - Are the post foundations secure?	Yes
3c - Is the top of each concrete foundation less than 75 mm above ground level?	Yes



Untensioned Steel VRS

3d - Are the posts correctly orientated, i.e. radiused edge of post presented to direction of traffic flow?	Yes
3e - Are the post beddings secure?	Yes
3f - Where surface mounted posts are used, are the anchor bolts secure and in satisfactory condition?	Yes
3g - Are the voids for the socketed posts suitably filled?	Yes
3g - If no, state location and degree of issue:	

Beams

4a - Do beams overlap in the correct direction?	Yes
4b - On standard beams have the correct size of post screws been used and assembled correctly?	No
4b - If no, state location and degree of issue: Missing post bolts and multiple missing lap bolts	



26/07/2023



26/07/2023



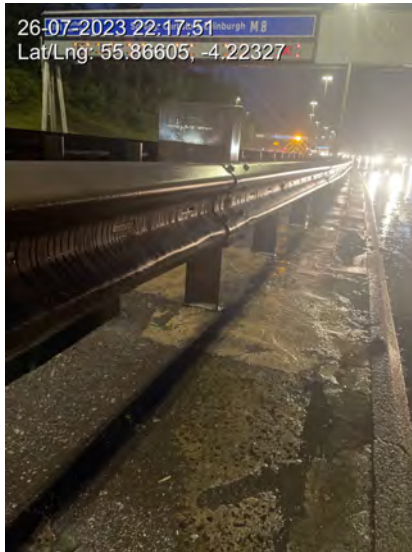
26/07/2023

4c - If present, is the antiglare fencing in good condition?	N/A
--	-----

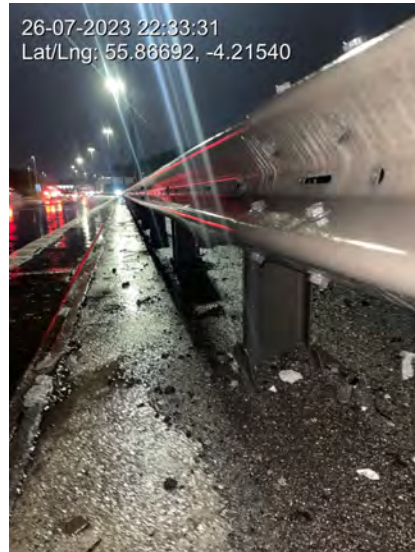


Untensioned Steel VRS

4d - Are the beams in a satisfactory condition?	No
4d - If no, state location and degree of issue: Multiple hit/damaged beams	



26/07/2023



26/07/2023



26/07/2023

Is Departure Terminal Present?	
--------------------------------	--

5e - Is the chevron marker clean, if a P4 terminal?	
---	--

Beam Ending Location

Beam End Co-ordinates	55.86818°N, -4.20785°W - 26/07/2023
-----------------------	-------------------------------------

Overall Barrier Condition

Rate overall barrier condition (1 = Excellent, 5 = Very Poor)	2
---	---

Corrosion Level



Untensioned Steel VRS

Rate the severity of the corrosion generally (1 = No Corrosion, 5 = Severe Corrosion)	1
Rate the extent of corrosion (0% = No corrosion evident anywhere on system, 100% = Corrosion evident throughout entire installation)	0%
Average thickness of galvanising (microns)	80
General commentary on corrosion: No corrosion present	



26/07/2023

Inspection Sign Off

Sign Off Inspection

Redacted - Regulation 11(2)

26/07/2023 22:05:55



Untensioned Steel VRS

Inspection Date & User Details

Inspected By	Redacted - Regulation 11(2)
Inspection Depot	Scotland
Inspection Date	26/07/2023

Location Information

Road Speed Limit	50 mph
Barrier Location	CR

Beam Starting Location

Beam Start Co-ordinates	55.86634°N, -4.22967°W - 26/07/2023
-------------------------	-------------------------------------

Beam Information

Type of Untensioned Corrugated Beam	Proprietary
Is Beam Double Sided?	No
Is Approach Terminal Present?	

General Checks

2a - Is the set-back within spec?	Yes
2b - Is the clearance behind the fence within spec?	Yes
2c - Are the mounting heights of each beam within tolerance?	Yes



Untensioned Steel VRS

2d - Is the whole installation free from any missing posts, bolts, screws or other components?	Yes
2e - Does the whole installation have a generally satisfactory flowing alignment?	Yes
2f - Is the ground profile in front of and behind the safety fence (in the clearance zone) generally level and free from obstacles, including redundant fence fixings?	Yes

Posts

3a - Are the posts at the correct spacing?	Yes
3b - Are the post foundations secure?	Yes
3c - Is the top of each concrete foundation less than 75 mm above ground level?	Yes
3d - Are the posts correctly orientated, i.e. radiused edge of post presented to direction of traffic flow?	Yes
3e - Are the post beddings secure?	Yes
3f - Where surface mounted posts are used, are the anchor bolts secure and in satisfactory condition?	Yes
3g - Are the voids for the socketed posts suitably filled?	No



Untensioned Steel VRS



26/07/2023

Beams

4a - Do beams overlap in the correct direction?	Yes
4b - On standard beams have the correct size of post screws been used and assembled correctly?	Yes
4c - If present, is the antiglare fencing in good condition?	N/A
4d - Are the beams in a satisfactory condition?	No
4d - If no, state location and degree of issue:	



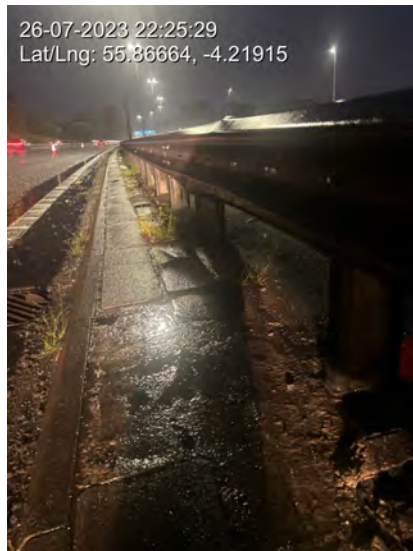
Untensioned Steel VRS



26/07/2023



26/07/2023



26/07/2023



26/07/2023



26/07/2023



26/07/2023

Is Departure Terminal Present?	
--------------------------------	--

5e - Is the chevron marker clean, if a P4 terminal?	
---	--

Beam Ending Location

Beam End Co-ordinates	55.86817°N, -4.20821°W - 26/07/2023
-----------------------	-------------------------------------



Untensioned Steel VRS

Overall Barrier Condition

Rate overall barrier condition (1 = Excellent, 5 = Very Poor)	4
---	---

Corrosion Level

Rate the severity of the corrosion generally (1 = No Corrosion, 5 = Severe Corrosion)	1
Rate the extent of corrosion (0% = No corrosion evident anywhere on system, 100% = Corrosion evident throughout entire installation)	0%
Average thickness of galvanising (microns)	80
General commentary on corrosion: No corrosion	

Inspection Sign Off

Sign Off Inspection
Redacted - Regulation 11(2)
26/07/2023 22:48:30



Untensioned Steel VRS

Inspection Date & User Details

Inspected By	Redacted - Regulation 11(2)
Inspection Depot	Scotland
Inspection Date	26/07/2023

Location Information

Road Speed Limit	50 mph
Barrier Location	CR

Beam Starting Location

Beam Start Co-ordinates	55.86838°N, -4.20729°W - 26/07/2023
-------------------------	-------------------------------------

Beam Information

Type of Untensioned Corrugated Beam	Proprietary
Is Beam Double Sided?	No
Is Approach Terminal Present?	

General Checks

2a - Is the set-back within spec?	Yes
2b - Is the clearance behind the fence within spec?	Yes
2c - Are the mounting heights of each beam within tolerance?	Yes



Untensioned Steel VRS

2d - Is the whole installation free from any missing posts, bolts, screws or other components?	Yes
2e - Does the whole installation have a generally satisfactory flowing alignment?	Yes
2f - Is the ground profile in front of and behind the safety fence (in the clearance zone) generally level and free from obstacles, including redundant fence fixings?	Yes

Posts

3a - Are the posts at the correct spacing?	Yes
3b - Are the post foundations secure?	Yes
3c - Is the top of each concrete foundation less than 75 mm above ground level?	Yes
3d - Are the posts correctly orientated, i.e. radiused edge of post presented to direction of traffic flow?	Yes
3e - Are the post beddings secure?	Yes
3f - Where surface mounted posts are used, are the anchor bolts secure and in satisfactory condition?	Yes
3g - Are the voids for the socketed posts suitably filled?	Yes
3g - If no, state location and degree of issue:	

Beams

4a - Do beams overlap in the correct direction?	Yes
4b - On standard beams have the correct size of post screws been used and assembled correctly?	Yes



Untensioned Steel VRS

4c - If present, is the antiglare fencing in good condition?	N/A
--	-----

4d - Are the beams in a satisfactory condition?	Yes
---	-----

Is Departure Terminal Present?	
--------------------------------	--

5e - Is the chevron marker clean, if a P4 terminal?	
---	--

Beam Ending Location

Beam End Co-ordinates	55.87001°N, -4.20169°W - 26/07/2023
-----------------------	-------------------------------------

Overall Barrier Condition

Rate overall barrier condition (1 = Excellent, 5 = Very Poor)	4
---	---

Corrosion Level

Rate the severity of the corrosion generally (1 = No Corrosion, 5 = Severe Corrosion)	1
Rate the extent of corrosion (0% = No corrosion evident anywhere on system, 100% = Corrosion evident throughout entire installation)	0%
Average thickness of galvanising (microns)	80
General commentary on corrosion: No corrosion	

Inspection Sign Off



Untensioned Steel VRS

Sign Off Inspection

Redacted - Regulation 11(2)

26/07/2023 23:01:45



Untensioned Steel VRS

Inspection Date & User Details

Inspected By	Redacted - Regulation 11(2)
Inspection Depot	Scotland
Inspection Date	26/07/2023

Location Information

Road Speed Limit	50 mph
Barrier Location	CR

Beam Starting Location

Beam Start Co-ordinates	55.86840°N, -4.20701°W - 26/07/2023
-------------------------	-------------------------------------

Beam Information

Type of Untensioned Corrugated Beam	Proprietary
Is Beam Double Sided?	No
Is Approach Terminal Present?	

General Checks

2a - Is the set-back within spec?	Yes
2b - Is the clearance behind the fence within spec?	Yes
2c - Are the mounting heights of each beam within tolerance?	Yes



Untensioned Steel VRS

2d - Is the whole installation free from any missing posts, bolts, screws or other components?	Yes
2e - Does the whole installation have a generally satisfactory flowing alignment?	Yes
2f - Is the ground profile in front of and behind the safety fence (in the clearance zone) generally level and free from obstacles, including redundant fence fixings?	Yes

Posts

3a - Are the posts at the correct spacing?	Yes
3b - Are the post foundations secure?	Yes
3c - Is the top of each concrete foundation less than 75 mm above ground level?	Yes
3d - Are the posts correctly orientated, i.e. radiused edge of post presented to direction of traffic flow?	Yes
3e - Are the post beddings secure?	Yes
3f - Where surface mounted posts are used, are the anchor bolts secure and in satisfactory condition?	Yes
3g - Are the voids for the socketed posts suitably filled?	Yes
3g - If no, state location and degree of issue:	

Beams

4a - Do beams overlap in the correct direction?	Yes
4b - On standard beams have the correct size of post screws been used and assembled correctly?	Yes

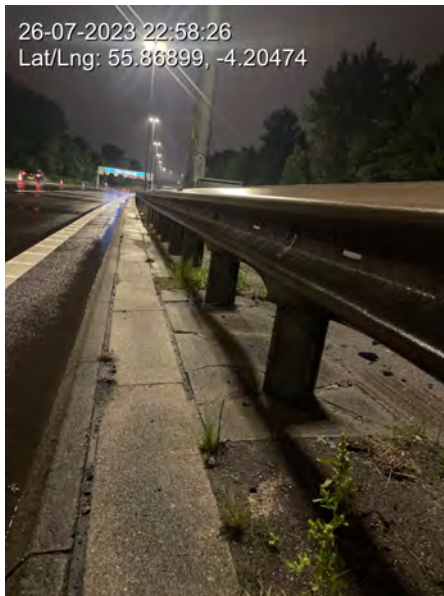


Untensioned Steel VRS

4c - If present, is the ant glare fencing in good condition?	N/A
--	-----

4d - Are the beams in a satisfactory condition?	No
---	----

4d - If no, state location and degree of issue: Hit/Damaged beam
--



26/07/2023

Is Departure Terminal Present?	
--------------------------------	--

5e - Is the chevron marker clean, if a P4 terminal?	
---	--

Beam Ending Location

Beam End Co-ordinates	55.86993°N, -4.20171°W - 26/07/2023
-----------------------	-------------------------------------

Overall Barrier Condition

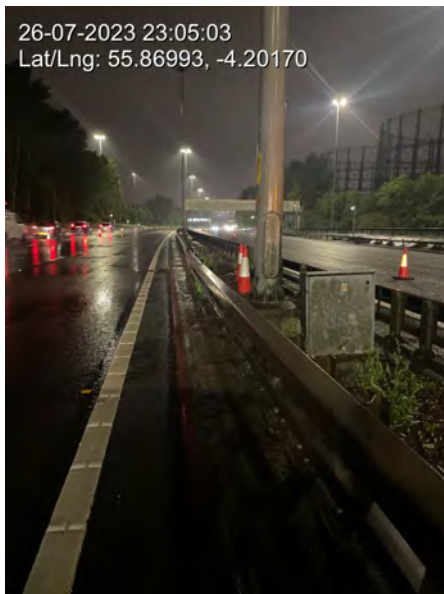
Rate overall barrier condition (1 = Excellent, 5 = Very Poor)	2
---	---

Corrosion Level



Untensioned Steel VRS

Rate the severity of the corrosion generally (1 = No Corrosion, 5 = Severe Corrosion)	1
Rate the extent of corrosion (0% = No corrosion evident anywhere on system, 100% = Corrosion evident throughout entire installation)	0%
Average thickness of galvanising (microns)	80
General commentary on corrosion: No corrosion found	



26/07/2023

Inspection Sign Off

Sign Off Inspection
Redacted - Regulation 11(2)
26/07/2023 23:05:23



Parapet Inspection

Inspection Date & User Details

Inspected By	Redacted - Regulation 11(2)
Inspection Depot	Scotland
Inspection Date	26/07/2023

Location Information

Contract Name	Amey SWU - Barrier Inspections
Contract Number	Placeholder
Client	Amey South West Unit
Carriageway Direction	Eastbound
Road Speed Limit	50 mph
Barrier Location	CR
Other barrier location description:	

Beam Starting Location

Beam Start Co-ordinates	55.86999°N, -4.20168°W - 26/07/2023
-------------------------	--

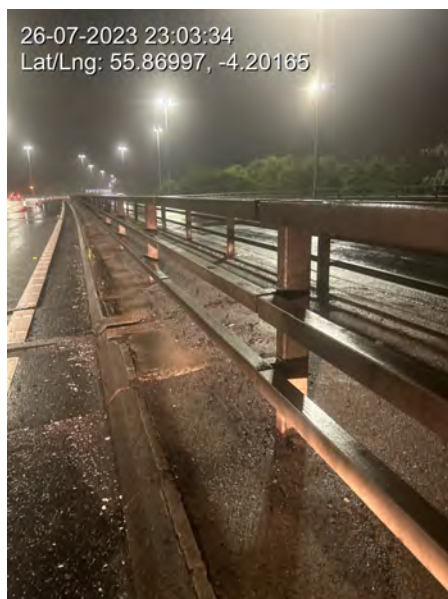
System Information

Type of System?	Proprietary Varley & Gulliver
Type of System Other:	
Parapet Type	Steel
Other Parapet type:	
Structural Form	Horizontal Rails
Other Structural Form Type:	



Parapet Inspection

Please take some photos of the general arrangement of the parapet.



26/07/2023



Parapet Inspection

Protective Coating	Galvanized Only
Other Protective Coating:	
Parapet height from adjacent deck level	1001mm - 1250mm
Approach End Connection Type	Transition
Other Approach End Connection Type:	
Depart End Connection Type	Transition
Other Depart End Connection Type:	
Parapet Fixing Type	Cast in posts
Other Parapet Fixing Type:	
Containment Level	Not Known
Other Containment Level:	
Parapet Added Panels	None
Other Parapet Added Panels:	
Mesh Panel Aperture Size	N/A
Other Mesh Panel Aperture Size:	
Holding Down Bolts	A4.80 compliant stainless steel loose top bolts
Other Holding Down Bolts:	
Are all Parapet added panels secured?	N/A
If no state problems with added panels:	
Are all Parapet fixings secured?	Yes
If no state problems with fixings:	
Is the mesh free from any debris or build up?	N/A
If no state extent of debris or build up:	



Parapet Inspection

Is there any impact damage to the parapet?	Yes
If yes state extent of damage: Bottom rail damaged	



26/07/2023

Beam Ending Location

Beam End Co-ordinates	55.87142°N, -4.19759°W - 26/07/2023
-----------------------	--

Overall Barrier Condition

Rate overall barrier condition (1 = Excellent, 5 = Very Poor)	3
---	----------

Corrosion Level



Parapet Inspection

Rate the severity of the corrosion generally (1 = No Corrosion, 5 = Severe Corrosion)	3
Rate the extent of corrosion (0% = No corrosion evident anywhere on system, 100% = Corrosion evident throughout entire installation)	30%
Average thickness of galvanising (microns)	80
General commentary on corrosion: Bottom of posts starting to corrode and beam showing signs of it	



26/07/2023



26/07/2023

Inspection Sign Off

Sign Off Inspection

Redacted - Regulation 11(2)

26/07/2023 23:13:18



Parapet Inspection

Inspection Date & User Details

Inspected By	Redacted - Regulation 11(2)
Inspection Depot	Scotland
Inspection Date	26/07/2023

Location Information

Contract Name	Amey SWU - Barrier Inspections
Contract Number	Placeholder
Client	Amey South West Unit
Carriageway Direction	Westbound
Road Speed Limit	50 mph
Barrier Location	CR
Other barrier location description:	

Beam Starting Location

Beam Start Co-ordinates	55.86999°N, -4.20168°W - 26/07/2023
-------------------------	-------------------------------------

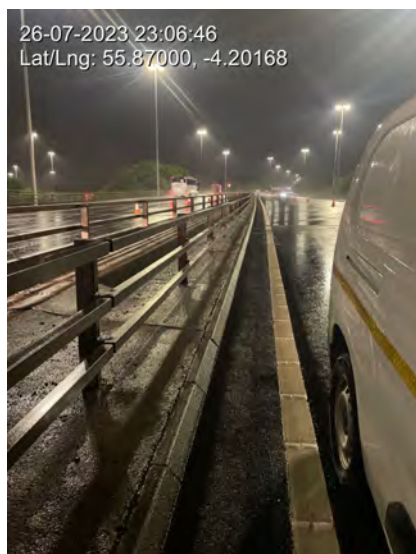
System Information

Type of System?	Proprietary Varley & Gulliver
Type of System Other:	
Parapet Type	Steel
Other Parapet type:	
Structural Form	Horizontal Rails
Other Structural Form Type:	

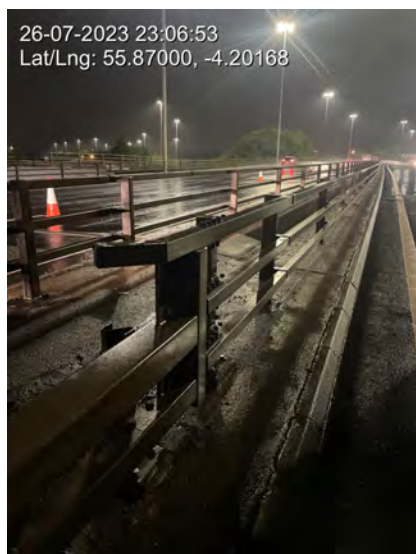


Parapet Inspection

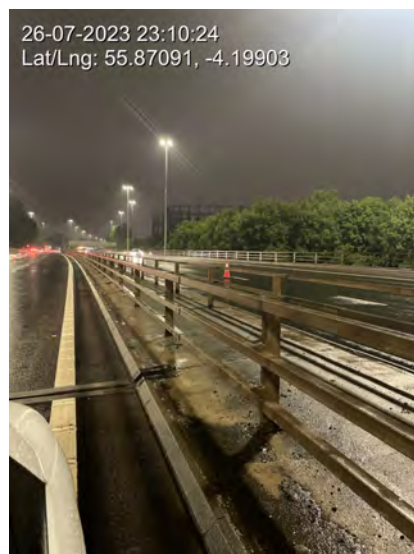
Please take some photos of the general arrangement of the parapet.



26/07/2023



26/07/2023



26/07/2023



Parapet Inspection

Protective Coating	Galvanized Only
Other Protective Coating:	
Parapet height from adjacent deck level	1001mm - 1250mm
Approach End Connection Type	Transition
Other Approach End Connection Type:	
Depart End Connection Type	Transition
Other Depart End Connection Type:	
Parapet Fixing Type	Surface mounted with baseplate
Other Parapet Fixing Type:	
Containment Level	Not Known
Other Containment Level:	
Parapet Added Panels	None
Other Parapet Added Panels:	
Mesh Panel Aperture Size	N/A
Other Mesh Panel Aperture Size:	
Holding Down Bolts	A4.80 compliant stainless steel loose top bolts
Other Holding Down Bolts:	
Are all Parapet added panels secured?	N/A
If no state problems with added panels:	
Are all Parapet fixings secured?	Yes
If no state problems with fixings:	
Is the mesh free from any debris or build up?	N/A
If no state extent of debris or build up:	



Parapet Inspection

Is there any impact damage to the parapet?	No
If yes state extent of damage:	

Beam Ending Location

Beam End Co-ordinates	55.87136°N, -4.19766°W - 26/07/2023
-----------------------	--

Overall Barrier Condition

Rate overall barrier condition (1 = Excellent, 5 = Very Poor)	1
---	----------

Corrosion Level

Rate the severity of the corrosion generally (1 = No Corrosion, 5 = Severe Corrosion)	1
Rate the extent of corrosion (0% = No corrosion evident anywhere on system, 100% = Corrosion evident throughout entire installation)	0%
Average thickness of galvanising (microns)	79
General commentary on corrosion: No corrosion found	

Inspection Sign Off

Sign Off Inspection	
Redacted - Regulation 11(2)	
26/07/2023 23:12:21	