

Covid-19 statistics and trends

16 Aug 22

Key points

- Covid-19 related deaths remain slightly elevated but low in relation to previous waves. All cause deaths is similar to previous years. (slides 2-3).
- Notifications of positive cases have fallen to low levels. (slides 4-6).
- Covid-related staff absences in care at home and housing support services have also fallen to comparatively low levels in recent weeks. Response rates remain low at 49.5%. (slides 7-8).
- We received a further 1 complaint about visiting (slide 9)
- Flu levels remain at baseline level (slide 10)

Data sources:

Care Inspectorate register of services

Care Inspectorate notifications of positive cases of Covid-19

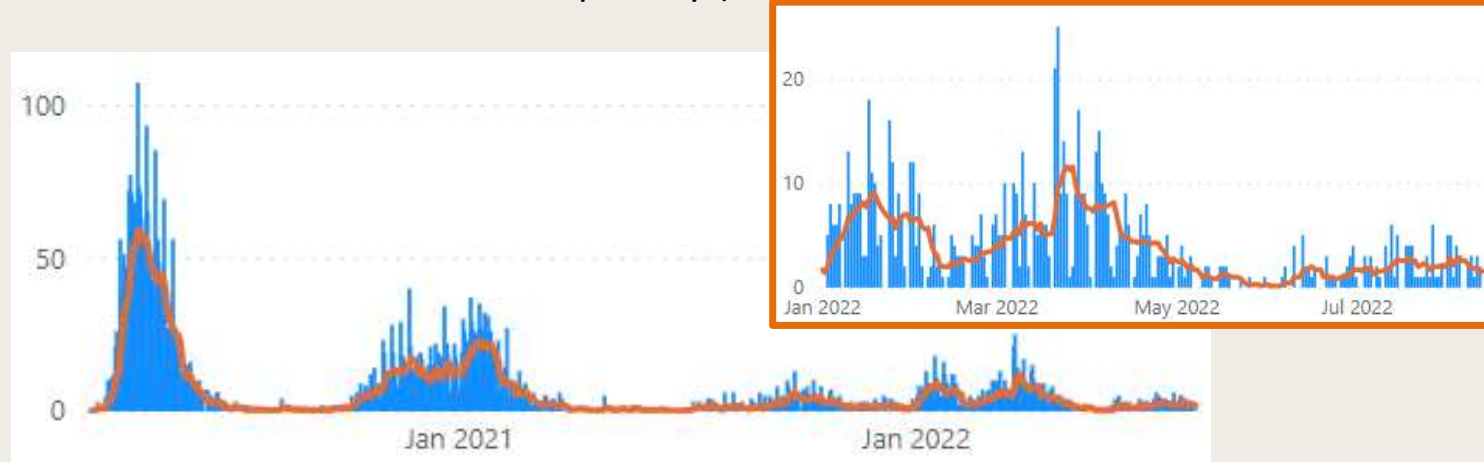
Care Inspectorate notifications of deaths – all causes and Covid-19-related

Notification of deaths (Covid-19 and all causes for all services)

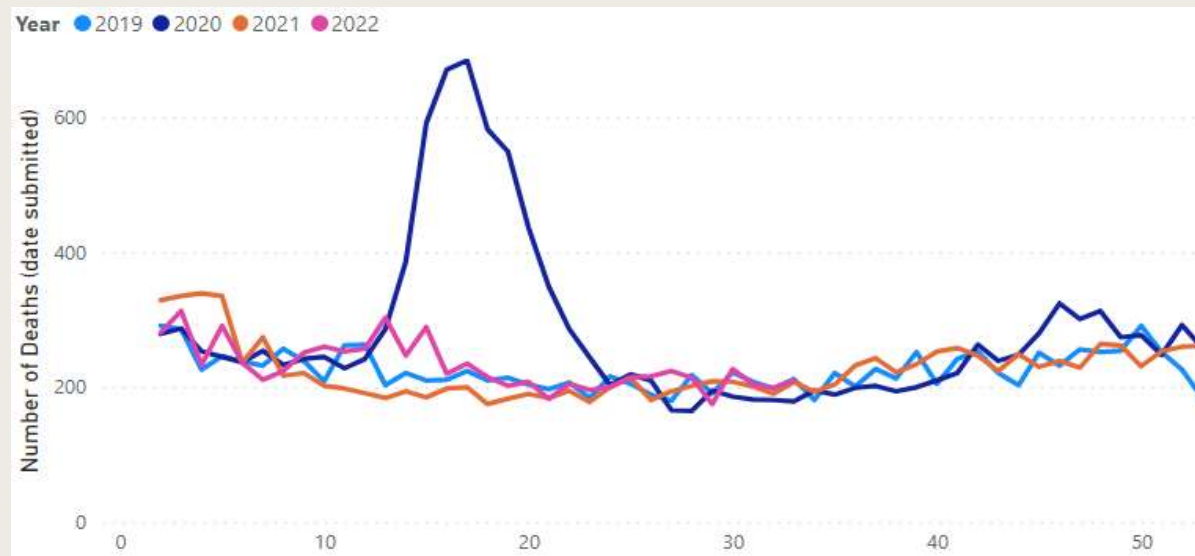
1. Covid related deaths remained slightly elevated through June, July and early August, but lower than levels in previous waves - currently **1.6/day**. The seven-day rolling average peaks to date are: 59 deaths/day in Apr20, 22/day Jan21, 6 in Sept21, 9 in Jan22 and 12 in Mar22.
2. All cause deaths for week 33 (up to Sun 14 August) in line with 2019 and 2021 levels. Has mainly remained close to previous years since week 16.

Source: Care Inspectorate service list 31Mar2020 and 31Jul2022; notifications 12Mar20 to 15Aug22, includes confirmed and suspected C-19

COVID-related death notifications per day (based on date notified)



All cause death notifications per week yearly trends (based on date notified)



Covid-related deaths care homes for older people

- Number of deaths low and decreasing in the last week.
- Since the start of Jan, 697 (719 last year) covid-related deaths notified by 355 (200 last year) care homes. Max of 8 (19 last year) in a single home.

2 weeks ago (1-7Aug): 15 deaths in 15 care homes. 0 homes reported >1 death



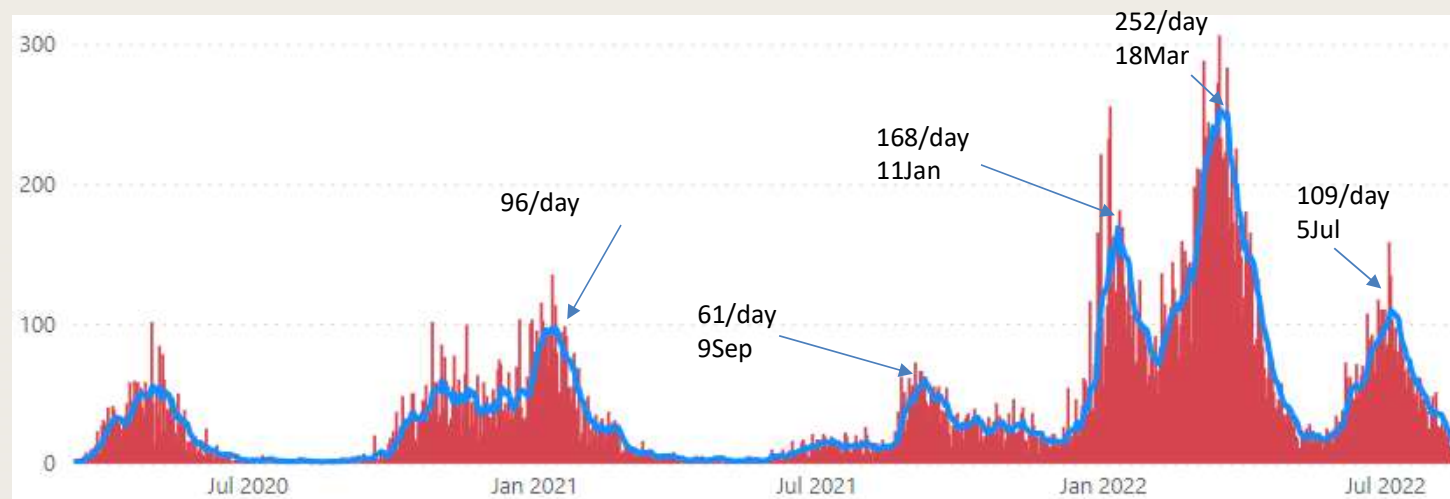
Last 7 days (8-14Aug): 5 deaths in 5 care homes. 0 homes reported >1 death



Notification of confirmed cases of Covid-19

1. Seven-day rolling average amongst people experiencing care increased from late May to 5 Jul (**109/day**) and since have fallen to **24/day** on 11Aug (Excludes most recent 3 days as these will be most affected by reporting lag)
2. In the last week, across all types of service, there were **649** confirmed cases submitted by all service types – 62% (1071) fewer than the number we last reported (1720 at 19Jul). This includes notifications about both staff and service users.

Daily number of **confirmed cases** for people experiencing care (excluding ELC services)
(Based on date confirmed positive)



Source: Care Inspectorate service list 31Mar2020 and 31Jul2022;
notifications 12Mar20 to 15Aug22

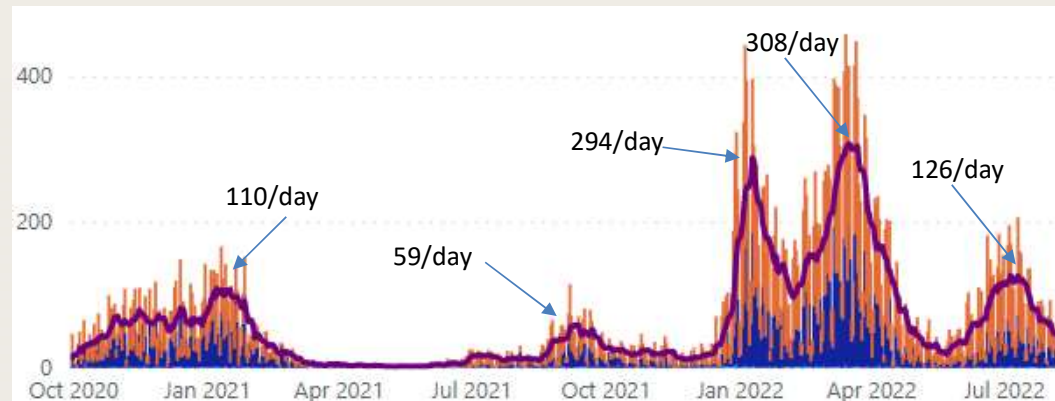
Notification of confirmed cases of Covid-19 in care homes for older people- change over last 2 weeks

Rolling average cases/day rose to **126/day** on 6 July and has since fallen to **36/day** on 14Aug. Well below all time peak of 308/day at 17Mar. Most cases are still amongst staff with **32%** amongst residents.

Previous week (1-7Aug): 306 cases in 129 services, 6 homes reported ≥ 10 cases ; 119 cases in residents (39%), 2 services reported ≥ 10 cases.

This week (8-14Aug): 253 cases in 124 services, 3 homes reported ≥ 10 cases; 80 cases in residents (32%), 2 services reported ≥ 10 cases.

Notifications of positive cases per day



Source: Care Inspectorate service list 31Mar2020 and 31Jul2022; notifications 12Mar20 to 15Aug22

● Confirmed Case:Agency staff ● Confirmed Case:Person using service ● Confirmed Case:Staff member



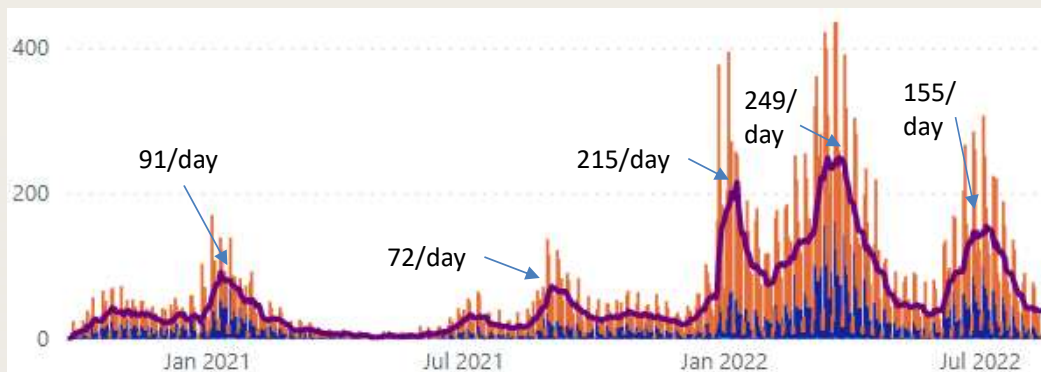
Notification of confirmed cases of Covid-19 in housing support and care at home : change over last 2 weeks

Cases rose from start of June to peak of **155/day** on 6 July and **now falling** – currently **38/day** on 14 August. Most cases still amongst staff; 24% of cases were amongst clients last week.

Previous week (1-7Aug): 295 cases from 173 services, 1 services with ≥ 10 cases; 86 cases amongst clients (29%), 1 services ≥ 5 cases

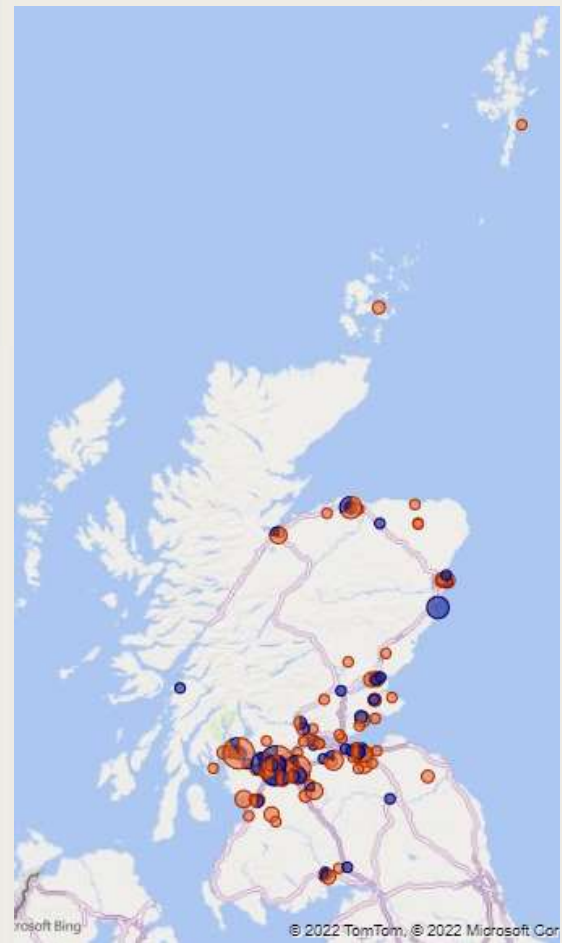
This week (8-14Aug): 266 cases from 154 services, 1 service with ≥ 10 cases; 63 cases amongst clients (24%), 0 services with ≥ 5 cases

Notifications of positive cases per day



Source: Care Inspectorate service list 31Mar2020 and 31Jul2022; notifications 12Mar20 to 15Aug22

● Confirmed Case:Agency staff ● Confirmed Case:Person using service ● Confirmed Case:Staff member



Care at home and housing support services: Staff vacancies and absences over time (at 9 August 2022)

Absence and staff vacancy trend over time:

Covid related absences increased over the course of June to 3.2% at 28 June, before falling over the last 6 weeks to 1.1% on 9 Aug.

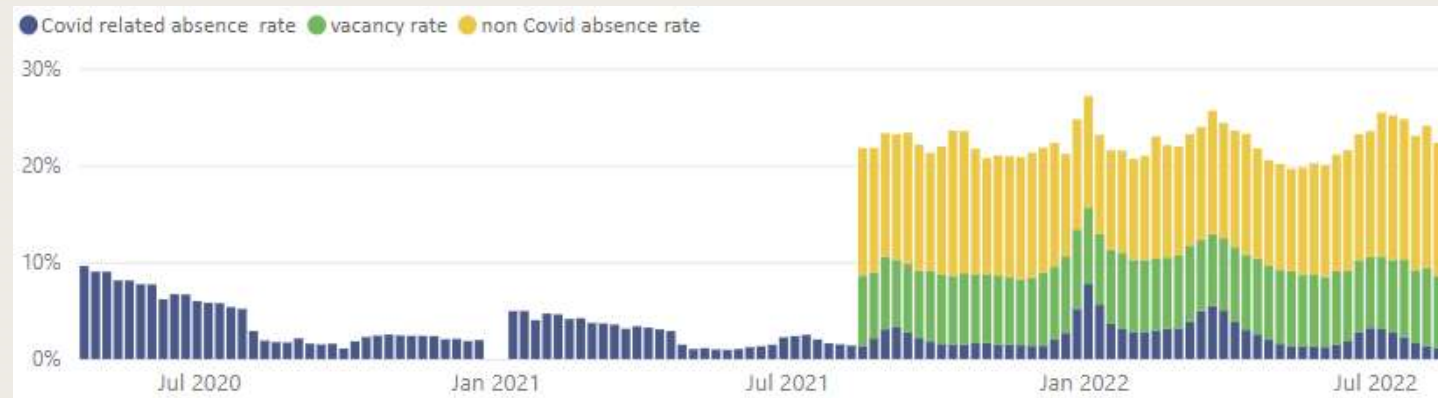
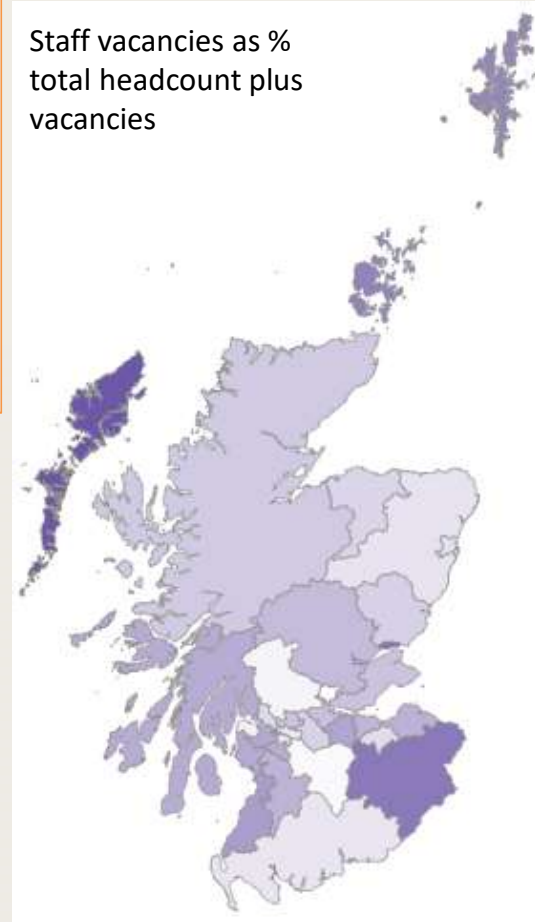
Non-covid absence (includes leave) rose to 15% at 12 July, and has now fallen overall to 13.7 at 9 Aug. Annual leave remains high, but has fallen since early July, while non-covid related illness has also reduced.

Vacancy rate remains close to 7.5% overall.

Combined rate of staff vacancies and absences had reached a peak of 25% at 5 July and has fallen since then to 22.3 at 9 Aug. The recent decrease is mainly due to the drop in covid-related absence since the start of July, although high summer annual leave levels (between 8.6 and 9.4%) have limited the drop.

Vacancy rate currently highest in Na h-Eileanan Siar, Dundee City and Scottish Borders (all low response rates)

Staff vacancies as % total headcount plus vacancies

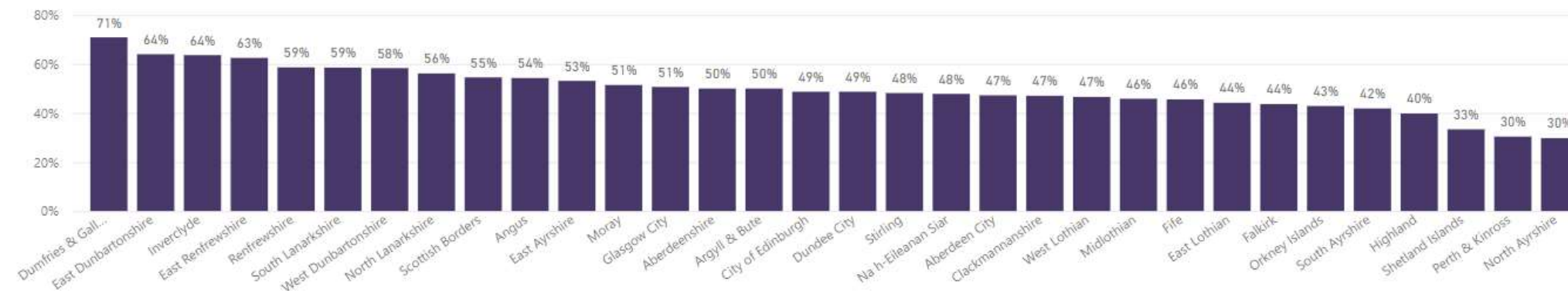


Source: Care Inspectorate service list 31Jul2022; staff absence weekly return 21Apr20 to 9Aug2022
Note, data includes all support services, including care at home, and all housing support services.

Care at home and housing support services: response rate to latest week staff absence survey (9 August 22)

Overall at 9 August 2022: response rate of 49.5% ; 15 out of 32 Las have response rate >=50% (up 3 since 19 July).

Response by council area (latest week)



Response Rate Over Time



Source: Care Inspectorate service list 31 Jul2022; staff absence weekly return 21Apr20 to 9Aug22

Note, data includes all support services, including care at home, and all housing support services – combined C@H/HSS services are counted only once.

Complaints about visiting: number and nature

Between 4 Mar 21 and 15 Aug 22:

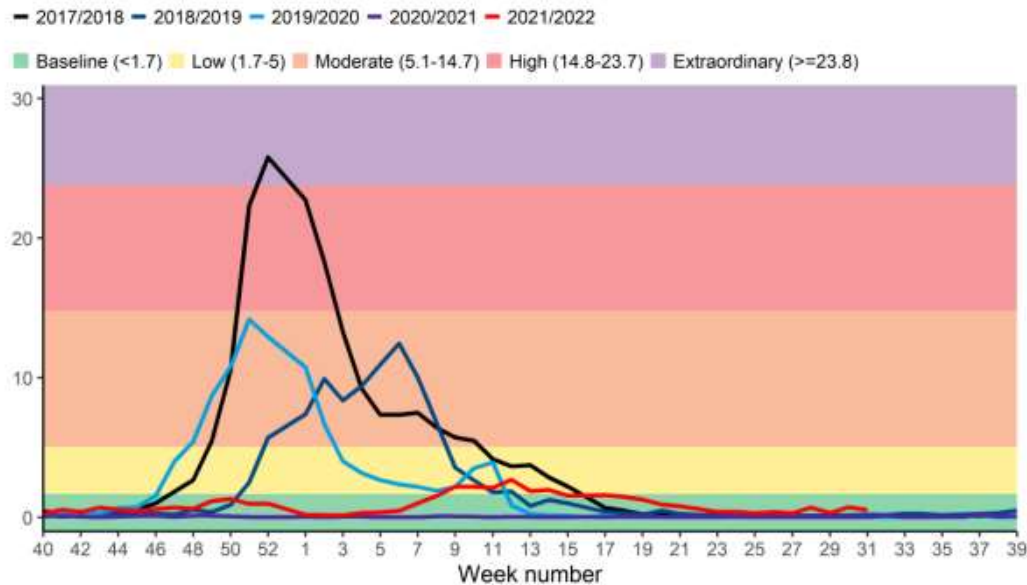
- 104 complaints received (+1 since last update)
 - 95 in care homes for older people
 - 5 in housing support services
 - 4 in support service (+1)
- 20 complaints were upheld. (+2 since last update)

Source: CI complaints data 15 August 22

Influenza – community levels. Weekly Respiratory report (PHS, week ending 07/08/2022)

- Flu incidence rate remains at baseline level.

Figure 5: Influenza incidence rate (per 100,000 population) in 2021/22 compared to 2017/18, 2018/19, 2019/20 and 2020/21. The colour bands represent the different activity levels.



Source: PHS, Weekly National Respiratory report, week 31 (ending 7 Aug 2022)