

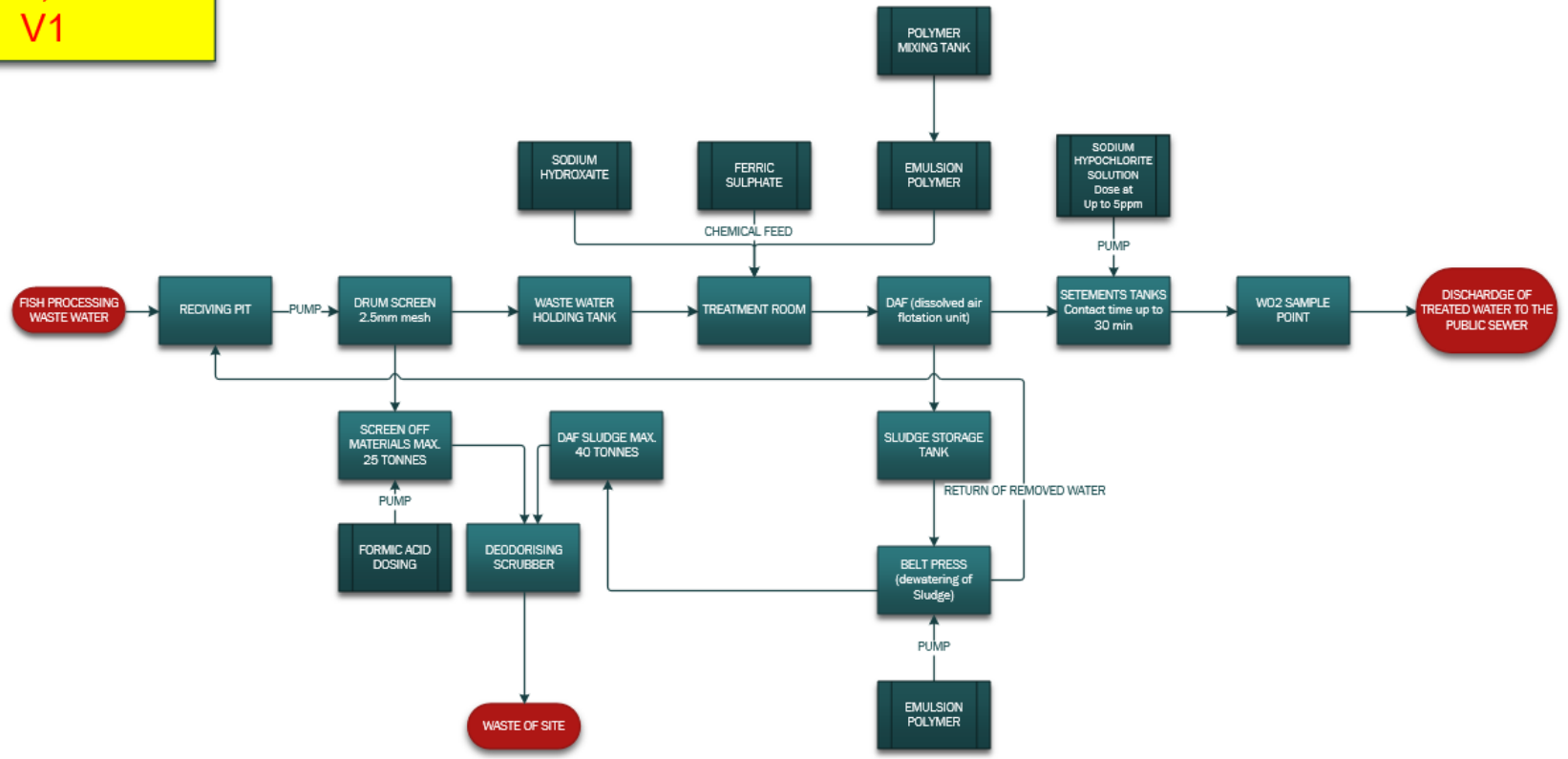








PROCESS FLOW
DOL Ref; FC2018
V1



Authorised Processing Establishments (Checklist for inspectors)

Name of Processing plant	Blar Mhor	Inspector	[REDACTED]
Case number	2022-0165	Date	23/05/22

General processes				
1	Species of Aquaculture animals processed	Atlantic Salmon and Rainbow Trout		
2	Species of wild aquatic animals processed	No wild animals, all farmed		
3	Is all effluent filtered prior to discharge?	Yes	X	
4	If yes please detail: (include level of filtration micrometres (µm), type of filtration (e.g. drum filters, screens), and when filtration is applied to effluent (pre or post disinfection))	Effluent goes through a drum filter prior to disinfection.		
5	Is effluent disinfected prior to discharge?	Yes	X	
6	If yes please detail: (include disinfection at any stage of the process, including de-watering of transport containers), method of effluent disinfection, stage of effluent disinfection (pre or post filtration, types of disinfectants used, product names, active ingredients, contact times, expiry dates and efficacy checks (e.g. residual free chlorine level in effluent >5 ppm after 30 mins))	The disinfection takes place prior to settlement tanks but after mechanical filtration. Measuring residue of free chlorine <5ppm at discharge point after settlement tanks.		
7	Effluent discharge destination (please detail grid ref or "domestic sewerage") NB add details of domestic sewerage treatment if known.	Final Destination is local municipal waste water treatment works in Caol		
8	Are drains connected to disinfection plant <i>via</i> filter?	Yes	x	
9	Are measures in place to prevent wind blown effluent when emptying fish bins?	Yes	X	
10	Is the fish receiving hopper / tank designed to prevent spillage of fish and effluent?	Yes	X	
11	Is there a system in place to prevent access to carcasses by predators (e.g. birds)	Yes	X	
12	Method / type of solids waste disposal /treatment (includes viscera, carcasses, trimmings, filtrate waste). Please detail method of solid wastes treatment, types of disinfectants / treatment system used, product names, active ingredients, contact times and efficacy checks (e.g. pH of silage <4.0) If transferred to another company please detail company contact details.	Viscera is controlled and dosed with formic acid and kept pH<4. Screened waste and sludge goes to energen biogas. Energen Biogas (screened waste & sludge) Pellagia (viscera)		
13	Are notices in place on entry to restrict access to the facility?	Yes	X	

14	If yes, please detail their location and requirements of the notice (e.g. restricted admittance, please use footbaths provided and wear protective equipment)	At entrances.			
15	Are notices in place between discrete work areas (i.e. yard, factory, chill, etc.) to restrict access?		X	No	
16	If yes please detail their location and requirements of the notice (e.g. restricted admittance, please use footbaths provided and wear protective equipment)	People in separate areas cannot access other areas due to PPE and biometric access control. Staff are trained to identify intruders. PPE is area specific			
17	Are footbaths in place on entry / exit to the site?			No	X
18	If yes, please detail the type of disinfectant used, the product name, contact times, concentrations, frequency of renewal, efficacy checks and whether brushes are provided to remove organic matter.	Footbaths are located on entry and exit from the primary processing area, but not on entry/exit from the site.			
19	Are footbaths in place between discrete work areas e.g. yard, factory, chill?		X	No	
20	If yes, please detail the type of disinfectant used, the product name, contact times, concentrations, frequency of renewal, efficacy checks and whether brushes are provided to remove organic matter.	See above.			
21	Are vehicles disinfected on arrival and exit from the site?			No	X
22	If yes, please detail the type of disinfectant used, the product name, contact times, concentrations, frequency of renewal, efficacy checks and whether brushes are provided to remove organic matter)	Vehicles are disinfected before leaving the site, but not on arrival.			
23	Are transport containers and associated equipment disinfected when moved onto and off site?	Yes	X		
24	If yes, please detail the method of disinfection, type of disinfectant used, the product name, contact times, concentrations, frequency of renewal, efficacy checks and whether brushes /pressure washers are used to remove organic matter)	Washed and disinfected. Bins and Tankers. Bin wash procedures and Tanker CIP available at inspection.			
25	Are aquatic animals transported in sealed, clean and disinfected containers?	Yes	X		
26	Are all transport tanks used to transport aquaculture animals slaughtered for disease control purposes kept in a separate area from transport tanks used for aquaculture animals not subject to disease control measures?			No	X
27	If yes, please detail nature of separation and bio-security.	Should this occur, measures			

		can easily put in place.			
28	Are on site vehicles e.g. fork lift trucks routinely cleaned and disinfected?	Yes	X		
29	Is the yard cleaned and disinfected – with no blood water evident?	Yes	X		
30	Is protective clothing cleaned and disinfected (at least after every shift?)	Yes	X		
31	Is processing equipment, utensils etc. routinely cleaned and disinfected	Yes	X		
Record Keeping					
	Are adequate records kept of:			Yes	No
32	The number of animals moved into the facility for each consignment			X	
33	The number of animals processed from each consignment			X	
34	The source of any animal processed (APB and site number)			X	
35	Destination of any animal processed			X	
36	Number of animals rejected for processing			X	
37	Destination of any animal rejected			X	
38	Staff and visitor movements onto and off site			X	
39	The transportation of animals to and from the site			X	
40	Cleaning and disinfection of vehicles and transport containers upon entrance / exit to the site			X	
41	Cleaning and disinfection of equipment / personnel onto and off site			X	
42	The type of filtration system in place on site			X	
43	The type of effluent disinfection / treatment system in place on site			X	
44	Efficacy monitoring of effluent and solid wastes disinfection / treatment			X	
45	Replenishment of footbaths and equipment disinfectant on site			X	
46	Staff training with regards to bio-security			X	
47	Staff training with regards to fish diseases (recognition of clinical signs of disease)				X

Signed by (inspector) _____  _____