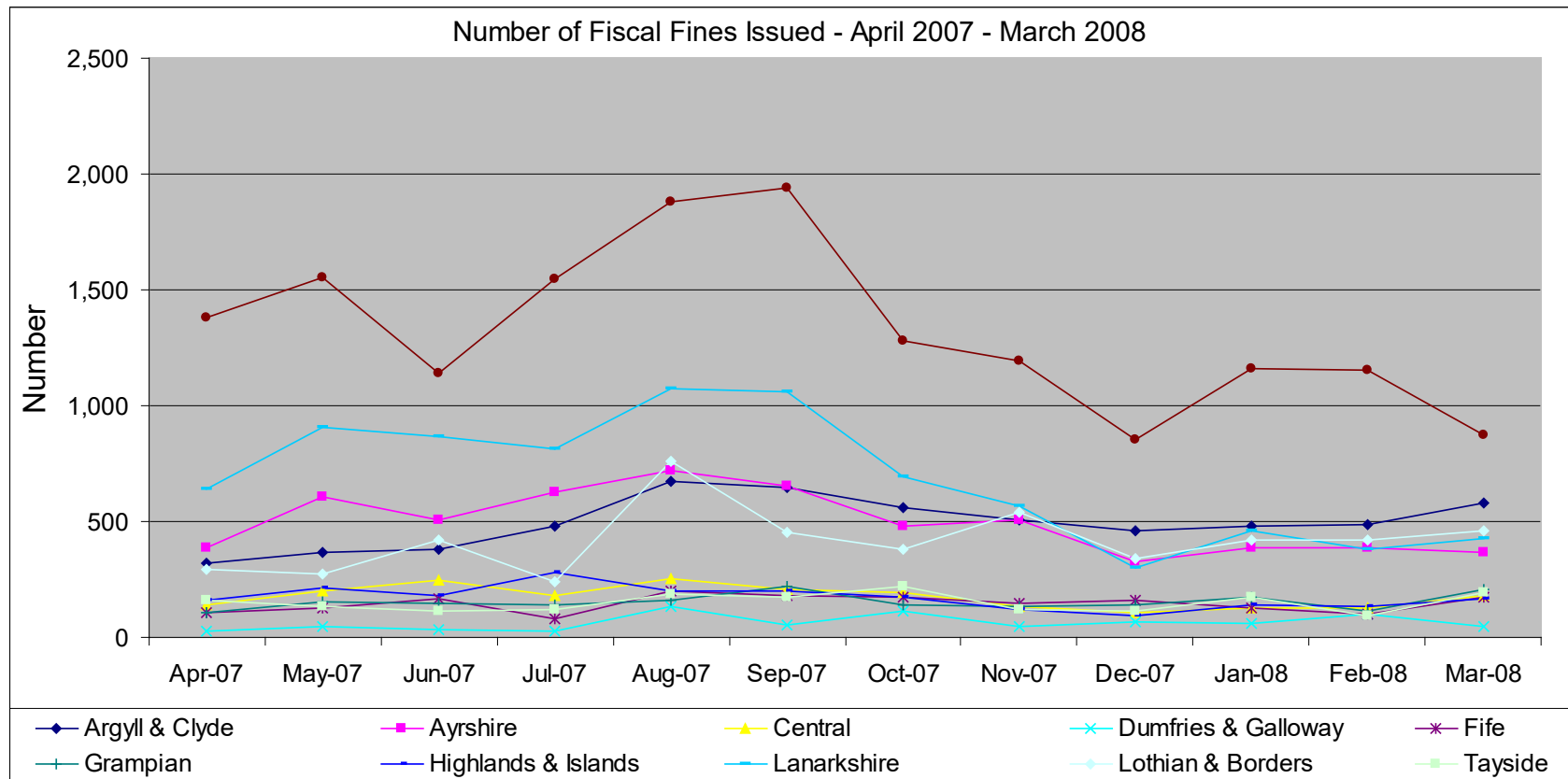


SJR Monitoring and Evaluation

Fiscal Direct Measures Issued April 2007 – June 2008 - Analysis

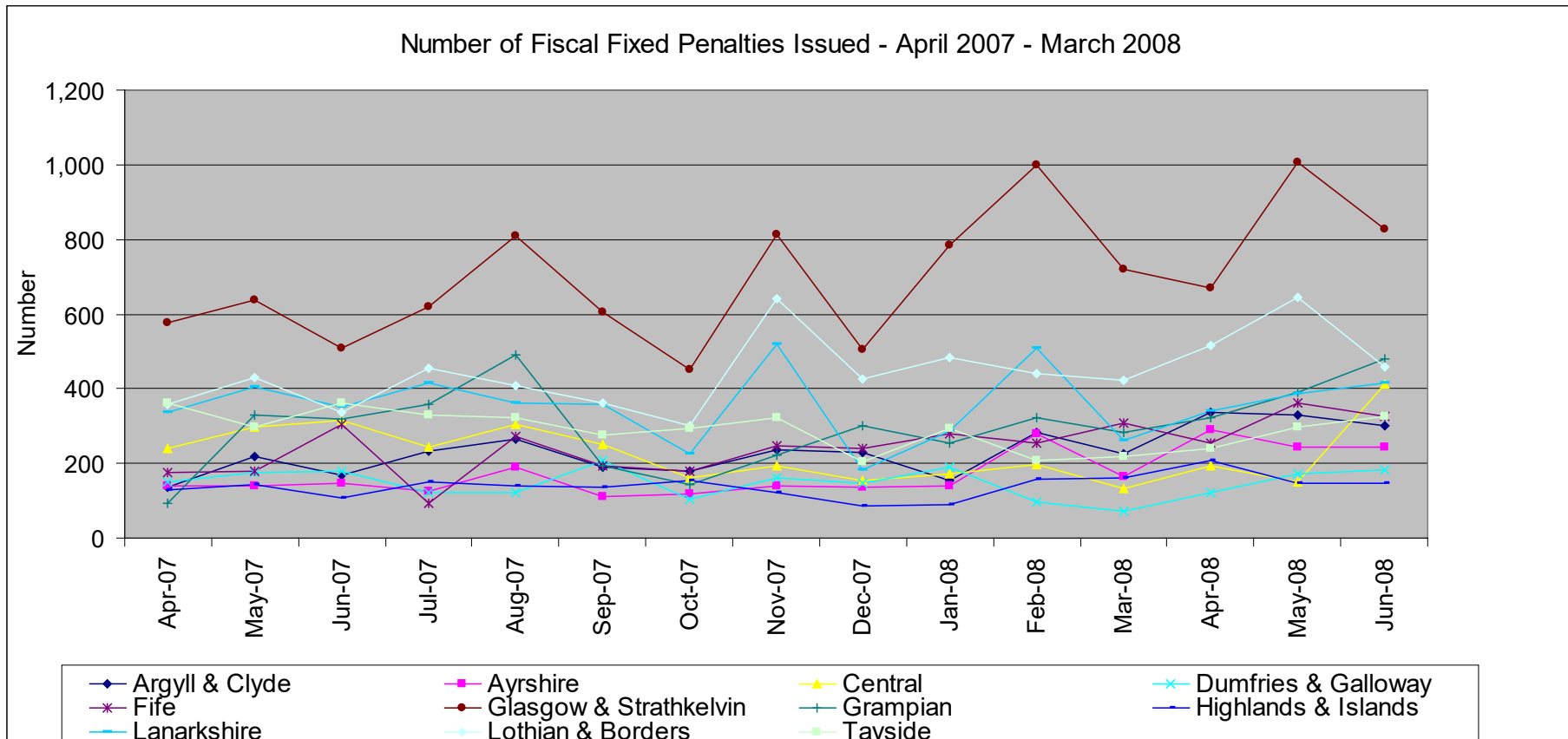
Fiscal Fines issued. Chart shows road reductions across the country including Glasgow which is by far the largest volume overall.

Glasgow	
Average issued April - June 2007	1359
Average issued April - June 2008	1087
National	
Average issued April - June 2007	4175
Average issued April - June 2008	3842



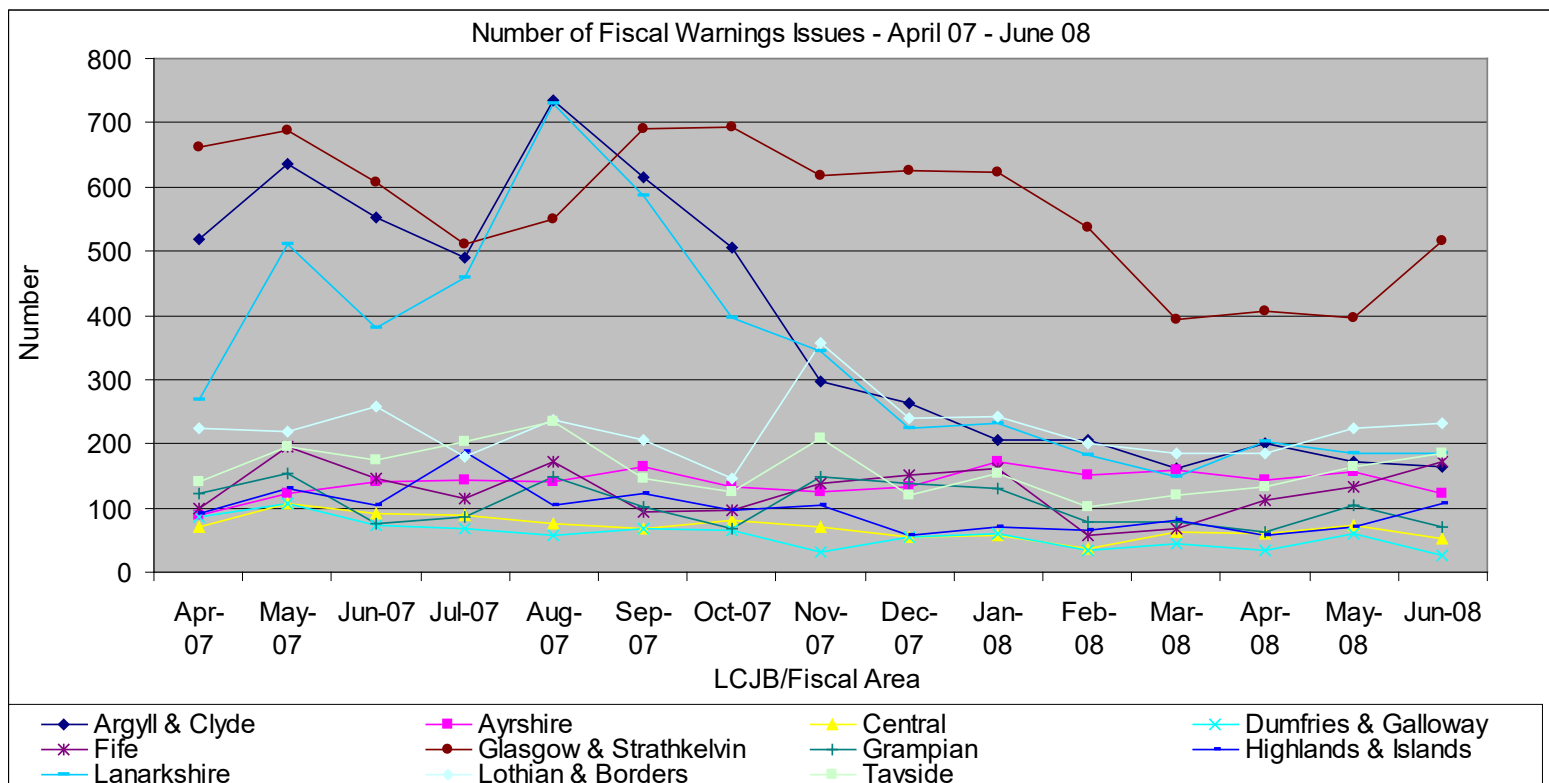
Fiscal Fixed Penalties have been creeping upwards.

Glasgow	
Average issued April - June 2007	574
Average issued April - June 2008	834
National	
Average issued April - June 2007	3018
Average issued April - June 2008	3913



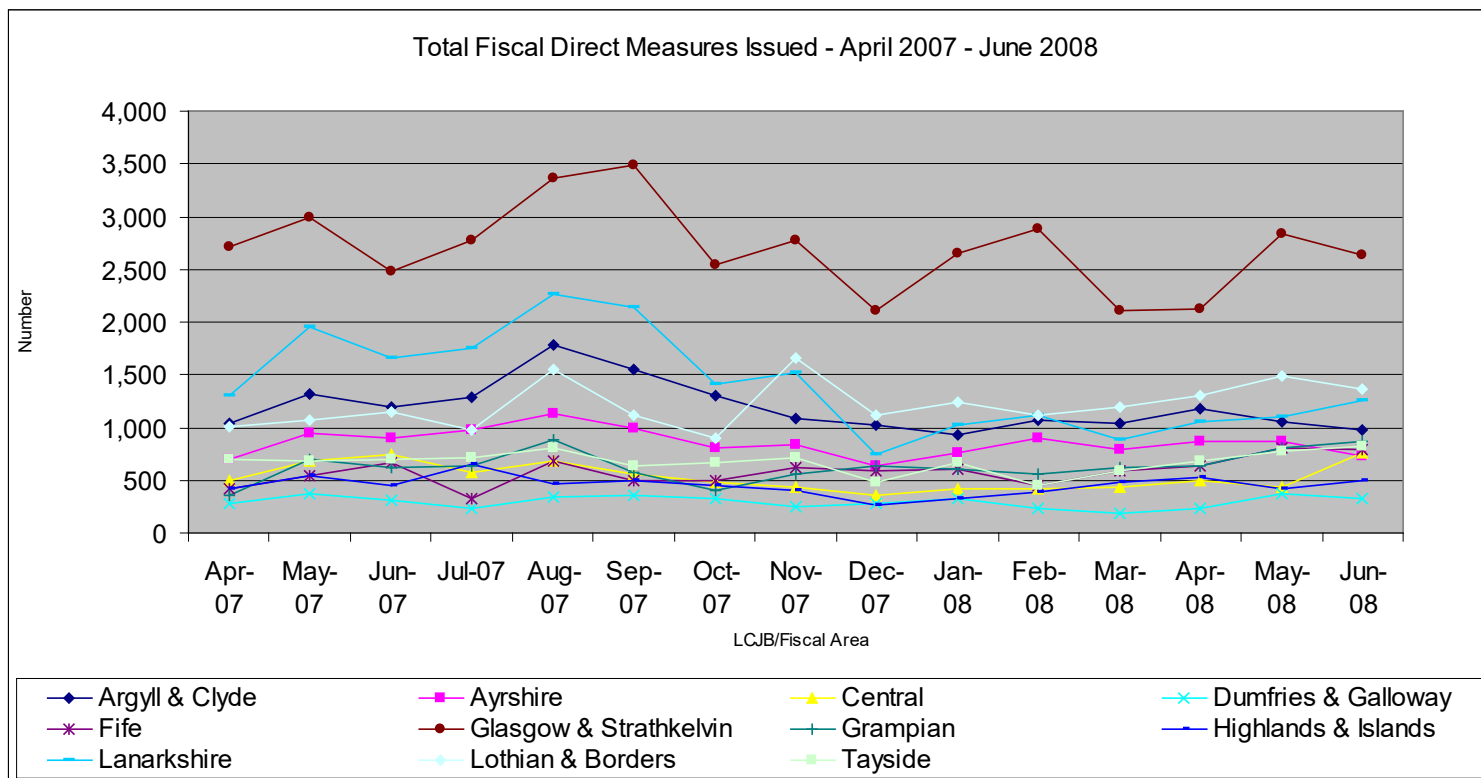
Fiscal Warnings have remained steady in the majority of areas except Argyll & Clyde, Lanarkshire and Glasgow where figures have dropped quite markedly. Impact of shifts between the different fiscal measures?

Glasgow	
Average issued April - June 2007	652
Average issued April - June 2008	439
National	
Average issued April - June 2007	2681
Average issued April - June 2008	1723



Finally the global figures for Fiscal DMs (which in addition to the above categories will also include the options of diversion and compensation offer). The largest reductions have been in Glasgow and Lanarkshire.

Glasgow	
Average issued April - June 2007	2732.333
Average issued April - June 2008	2529.667
National	
Average issued April - June 2007	10694
Average issued April - June 2008	10564



Comparison between Fiscal DMs Issued and Fiscal First Markings

The data used for the first SJR Monitoring Report (May 2008) utilised Fiscal First Markings Data. The figures used in this analysis used “Number Issued” These are two slightly different ways of extracting the data. As you can see whilst the specific figures month per month may differ the overall trends are the same regardless of which counting method deployed.

