

SJR Monitoring Report: Fiscal Work Orders

An analysis report on the use of Fiscal Work Orders, based on data from Excel Monitoring Forms completed by Local Authority Social Workers

SJR Monitoring and Evaluation Project Team

October 2009

0131 244 3321

cjbinfo@scotland.gsi.gov.uk



Introduction and Background

1. This report provides a range of data and analysis on Fiscal Work Orders. The majority of the report is based on data collected via a quarterly data recording exercise conducted on behalf of the Scottish Government by Social Workers in the four FWO pilot areas. In addition it includes some data from a monthly data extract provided by the COPFS Management Information Team.

2. Both sets of data will be used in the forthcoming evaluation of SJR Direct Measures by Morris Richards Ltd. The evaluation will provide further in-depth analysis of the data, together with interviews with key practitioners and offenders.

3. Please note: This report is based on manual returns and provisional management information data. A range of basic checks are conducted prior to analysis however the data is not subject to the full range of quality and statistical validity checks conducted for published reports. This report is presented, in part, to assist in the quality assurance process and comments on the data are invited from social work and PF colleagues.

Purpose

4. The main purpose for the report is to present the key learning points thus far. In addition, we hope that it will prompt discussion as to the accuracy of data so that the SG Project Team can “sense check” the data over the coming weeks and months.

Key Conclusions

5. The key conclusions from our initial analysis are as follows:

- Each quarter around **100-120 FWOs are issued across the four pilot areas**. Around 380 FWOs were issued up to end June 2009. Looking at the quarterly social work returns, the largest number have come from West Dunbartonshire (110) and the lowest from West Lothian (78).
- Around **30% of offenders issued with an FWO did not attend for their first assessment**. Locally, this figure varied from 18% in West Dunbartonshire to 37% in West Lothian.
- Around **47% of FWOs imposed were completed in full**. The remaining 53% includes both those who breach (missing their first assessment or breaching mid-way through an FWO) *and* those who were deemed unsuitable at the first

assessment. Again, there is some local variation ranging from 38% completed in West Lothian to 55% in Highland.

- **More than half of FWO recipients are aged 20 or under.** There is very little local variation in this statistic.
- **Just over half of FWO recipients are unemployed.** This figure varies from just over 40% unemployed in Highland to around 60% in South Lanarkshire.
- On average, **FWO recipients tend to have one or fewer convictions** although the average is slightly higher in Highland. There are local variations in the number of previous convictions, perhaps reflecting local practice by the PF or the “seriousness” of any previous convictions. For example, the vast majority of FWO recipients in South Lanarkshire tend to have no previous convictions whilst in Highland, offenders are much more likely to have had multiple previous convictions.
- **Breach of the Peace is the most common of the offence types to receive an FWO** followed by contravention of the Misuse of Drugs Act 1971, Theft, Shoplifting and Malicious Damage.
- **A typical FWO will be for 20-25 hours**, it will take around two weeks to go from referral from the fiscal to first assessment and around 50 days to go from first assessment to completion.

SJR Monitoring and Evaluation Project Team
September 2009

Section 1: Business volumes

This section provides a summary of the volumes of work orders imposed.

Chart 1: Number of FWOs imposed July 2008 – June 2009

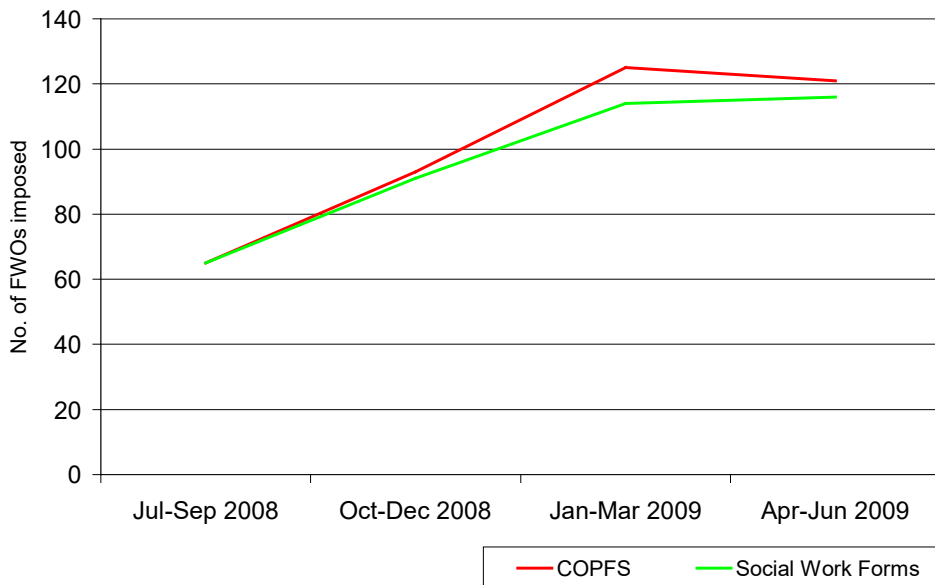


Chart 1 shows the national trend over time in terms of the number of FWOs imposed. It compares the numbers recorded in the social workers' quarterly forms against a regular management information data extract by the COPFS MI Team.

Both data sources show a similar trend in the number of FWOs imposed: an increase over the first three quarters but no substantial change between the third and fourth quarter, with numbers settling down to around 110-120 per quarter. The COPFS MI figures suggest that around 404 FWOs had been imposed by the end of June 2009 while the quarterly excel returns pointed to around 386. After the first quarter, the social work forms consistently show a lower number of FWOs imposed than the COPFS data.

Table 1: Fiscal Work Offers as percentage of cases closed

	Cases Closed	Fiscal Work Offers Imposed	Percentage of cases closed where FWO was imposed
National	17,314	386	2%
Highland (Inverness)	3,365	93	3%
South Lanarkshire (Hamilton)	8,149	105	1%
West Dunbartonshire (Dumbarton)	3,041	110	4%
West Lothian (Linlithgow)	2,759	78	3%

Chart 2: Distribution of Fiscal First Markings (National): August 2009

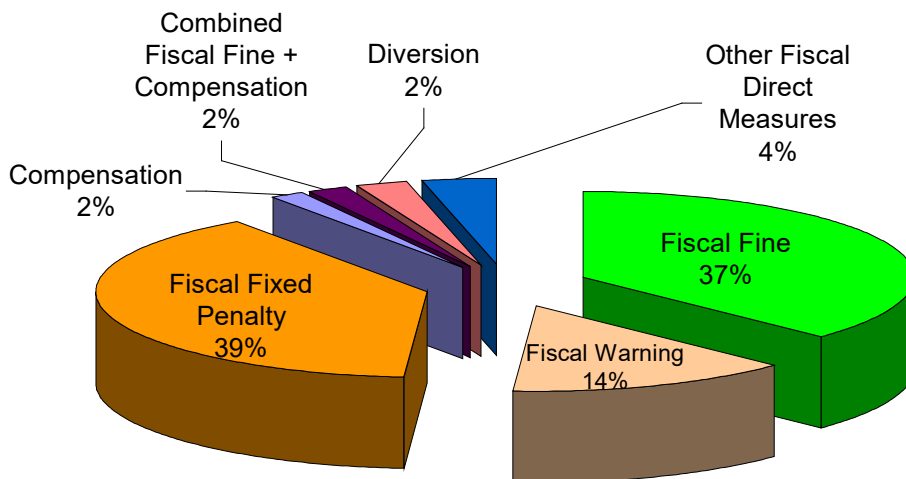


Table 1 provides an indication of the use of FWOs, presented as a proportion of the total number of cases closed in each Fiscal District Office. It suggests that in pilot areas around 2% of total business is taken up with FWOs, with some variation in each pilot area, ranging from 1% in South Lanarkshire to 4% in West Dunbartonshire. **Chart 2** puts this further into context, presenting a distribution of national Fiscal DM markings for

Chart 3: Number of FWOs imposed (as per excel quarterly returns): Comparison of the four FWO pilot areas

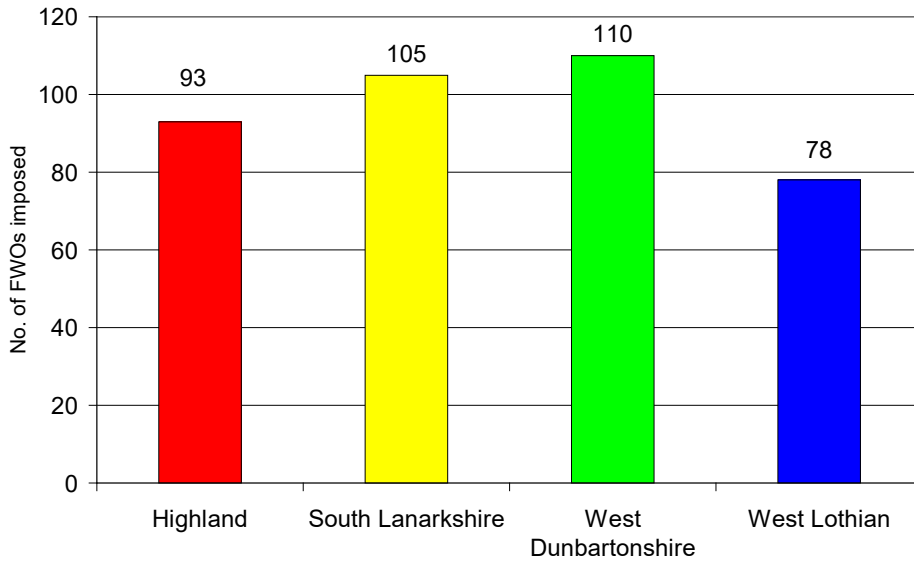


Chart 3 uses the quarterly excel data on its own to compare the number of FWOs imposed in the four pilot areas. The largest number is in West Dunbartonshire (110) and the lowest West Lothian (78).

Section 2: Attendance, Suitability and Completion

This section focuses on the attendance rates for FWO assessment, the proportions deemed suitable and completion rates.

Chart 4: Attendance Rates (No. attended first assessment / Number of FWOs imposed): Comparison of the four FWO areas; Total for Jul 08 – Jun 09

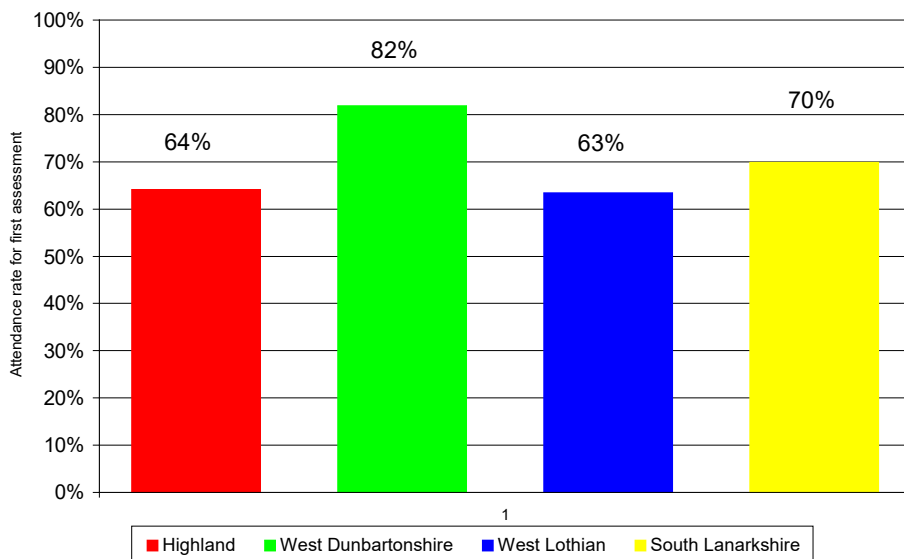


Chart 4 shows the “attendance rates” for each FWO area. This is the percentage of FWOs imposed who attended their first assessment.

The figures equate to a national attendance rate of 70%. West Dunbartonshire had the highest overall attendance rate for first assessment (82% attending, 18% not attending). South Lanarkshire (70%) had the second highest, followed by Highland (64%) and West Lothian (63%).

Chart 5: Attendance Rates (No. attended first assessment / Number of FWOs imposed): Comparison of the four FWO areas; Trend Over Time

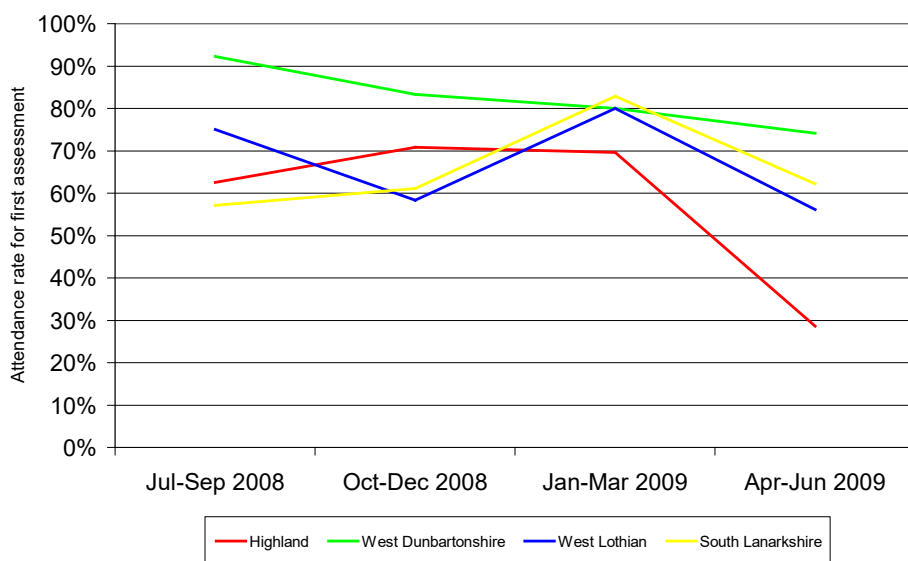


Chart 5 shows how the attendance rate has changed over time. Please note that for Apr-Jun 2009 the attendance rate in Highland is based on a total of only 7 FWOs imposed.

Chart 6: Attendance and Success Rates; Total for the four quarters July 08 – June 09; Comparison of the four pilot areas

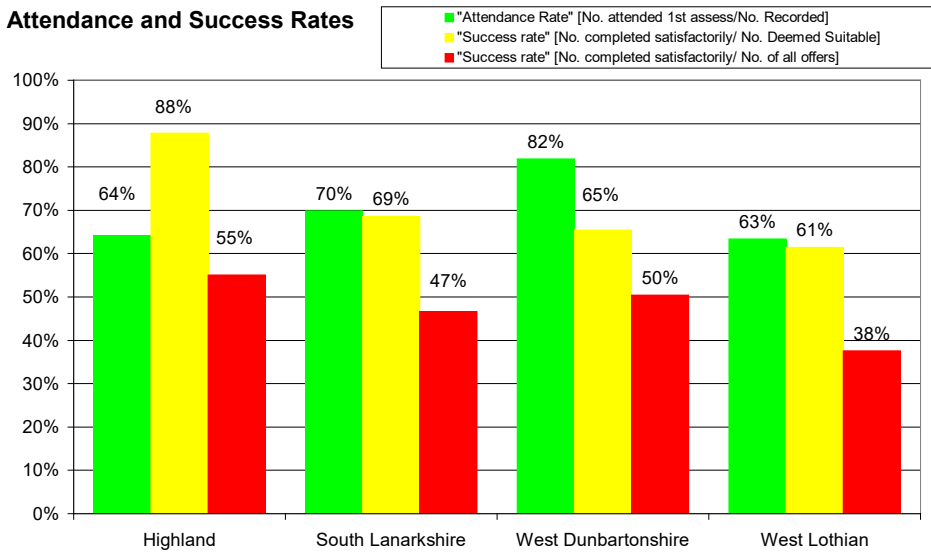


Chart 6 takes the attendance and “success rates” for each FWO pilot area and places them on the same chart. There are two forms of “success rate” shown. The first (in yellow) is the proportion of FWO recipients deemed suitable for an FWO who then go on to complete their FWO in full. The second (in red) is the volume completed in full expressed as a proportion of FWOs imposed in the first place.

Section 3: Offender/Offence Characteristics

This section uses the wealth of data collected on offender age, sex and offence type to provide some analysis on the profile of the offenders receiving FWOs.

Chart 7: Age Profile of FWO Recipients; July 2008 – June 2009

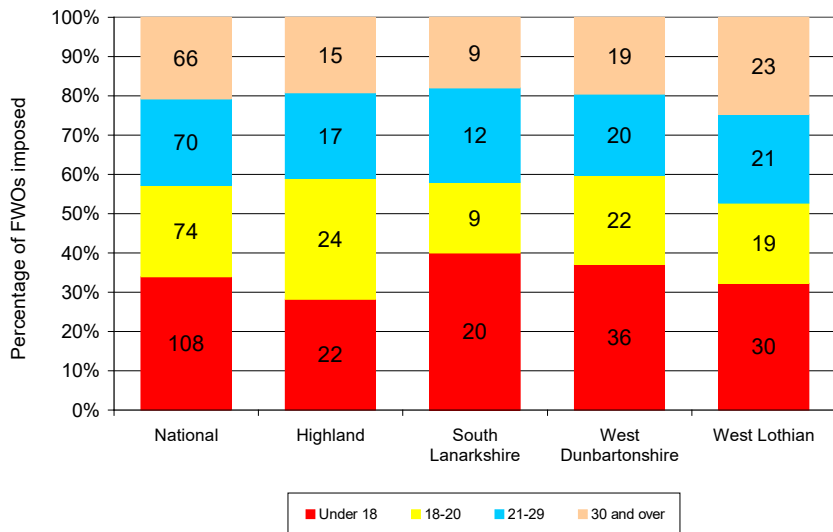


Chart 7 provides analysis on the typical age range of recipients of FWOs. For the four pilot areas as a whole over 50% are aged 20 or under. Around 20% are over the age of 30. There is relatively little variation between the four pilot areas. Analysis on the sex of FWO recipients (no chart shown) indicates that, in a typical month, between 70 and 80% of individuals undertaking FWOs will be male.

Chart 8: Employment Status; July 2008 – June 2009

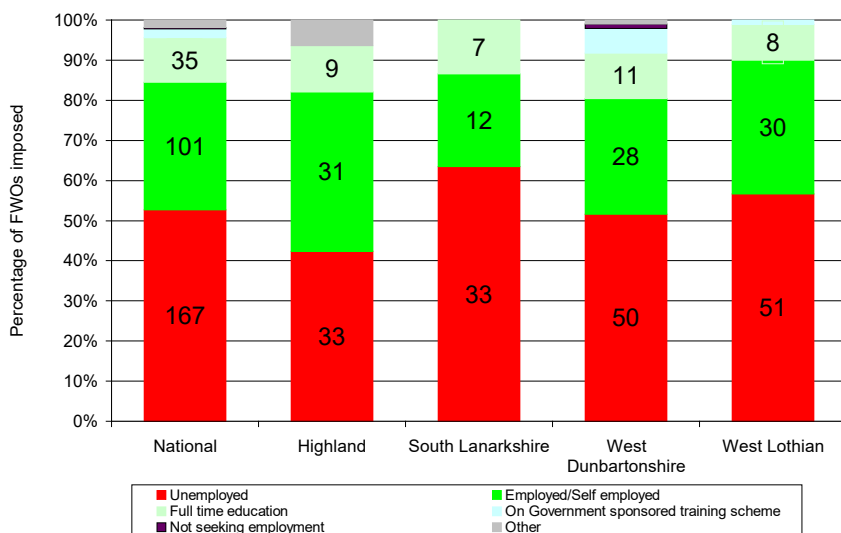


Chart 8 presents analysis on the employment status of those undertaking FWOs. It suggests that for the four pilot areas a whole, just over 50% of individuals are unemployed, with around 30% employed or self employed.

Chart 9 :Average Number Previous Convictions, Trend Over Time; July 2008 – June 2009

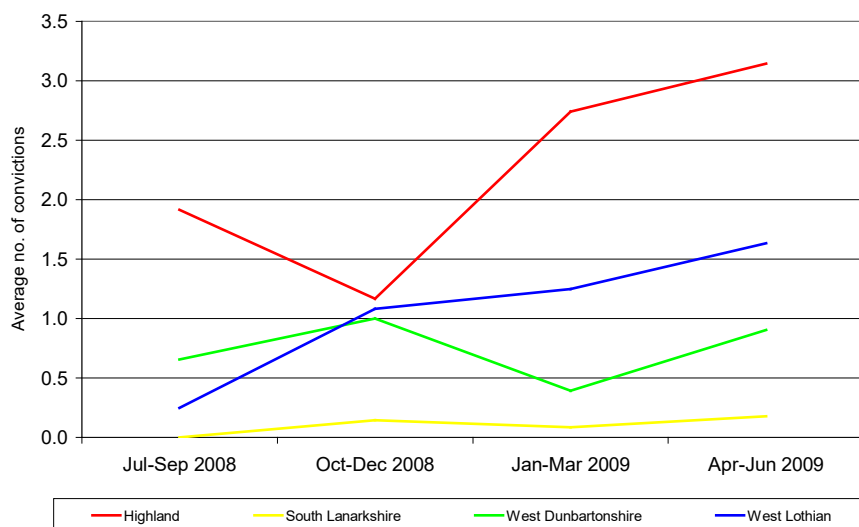


Chart 9 provides information on the average number of previous convictions for those undertaking FWOs. On average, offenders are likely to have had 1 or fewer previous convictions. That said, beneath the surface, there is considerable local variation, perhaps reflecting local practice by the PF and the type of previous conviction. The vast majority in South Lanarkshire tend to have no previous convictions whilst in Highland, offenders are more likely to have had multiple previous convictions.

Chart 10 : Top 5 Offence Types (National) for FWOs; July 2008 – June 2009

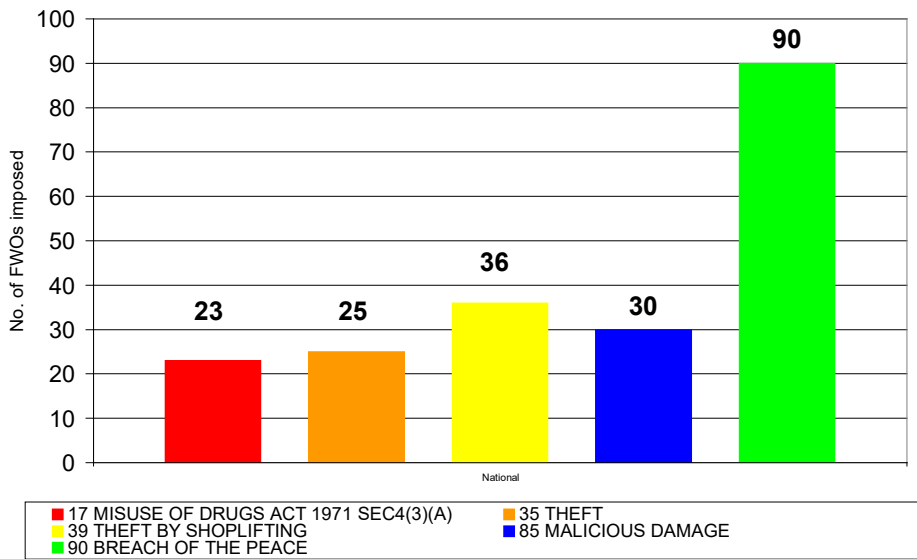


Chart 10 provides information about the top 5 offence types subject to an FWO. By far the largest proportion (about 45% of the top 5) are for Breach of the Peace. The rest of the top 5 are then fairly evenly split between Misuse of Drugs Act 1971, Theft or Shoplifting and Malicious Damage.

Further analysis was also done at FWO pilot level. It suggested some variations in the volumes of these top 5 national offence types. For example, no FWOs were recorded by Social Workers in Highland as originating from Misuse of Drugs Act offences, whilst in Lanarkshire around 30% of the top 5 total were for these offences.

Section 4: Average Time Indicators

This section uses the date information recorded in the quarterly forms to provide some analysis of the average times for FWOs to move through the process from imposition to completion.

Chart 11: Average length of an FWO (data from July 08 – June 09); Trend Comparison for the four FWO Pilot Areas

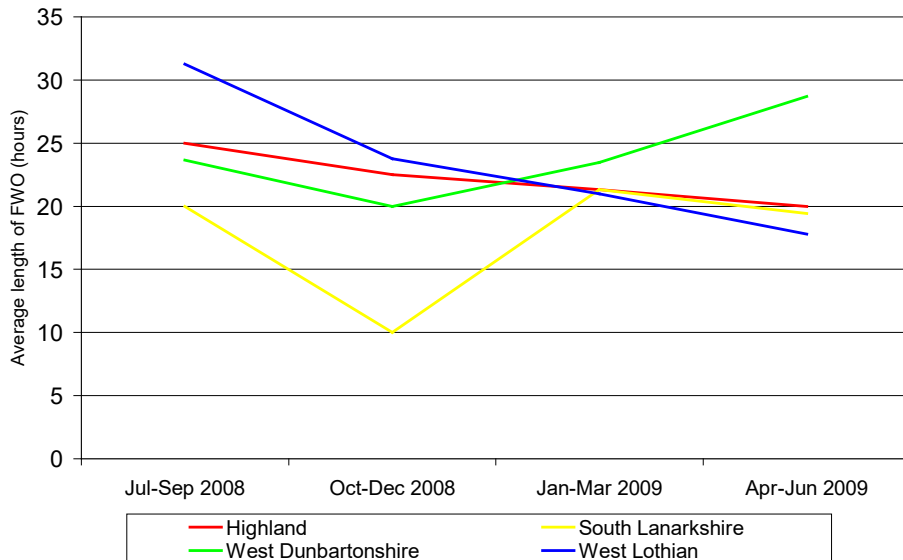
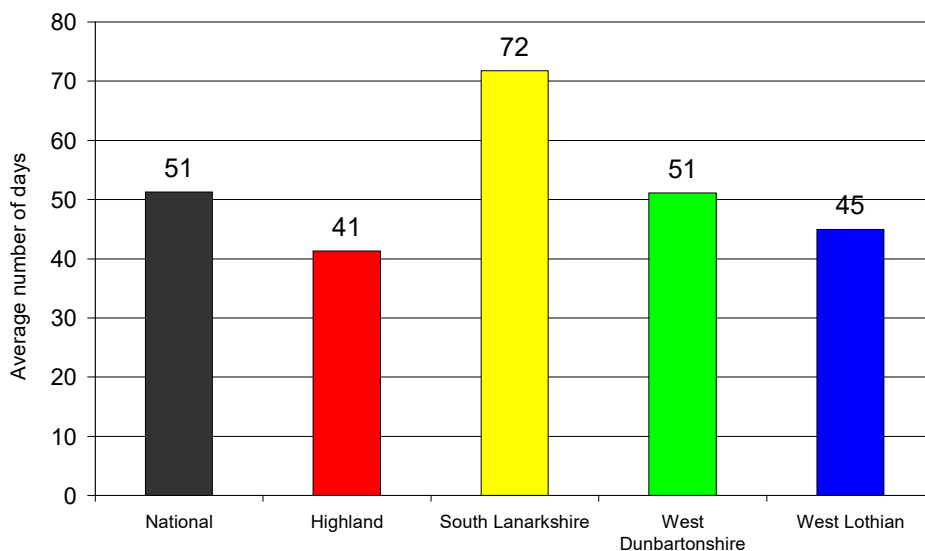


Chart 11 shows the average length of an FWO in each area and how this has changed over the four quarters. Between 20 and 25 hours appears to be the typical length for an FWO.

Chart 12 provides information on the average number of days from the first assessment to completion of the FWO. It shows that a typical FWO will take around 50 days (just over 6 weeks) to complete. FWOs in South Lanarkshire are taking slightly longer than the other areas, with it taking about 70 days (10 weeks) for FWOs to go from 1st assessment to completion. FWOs in Highland tend to take the shortest time to complete (less than 6 weeks).

Chart 12 Average Number of days from first assessment to completion of FWO (data from July 2008 – June 2009); Comparison FWO Areas



Please note that these figures may be affected by differing breach rates and average FWO lengths in each area.

Chart 13 Average number of days from PF Referral to First Assessment

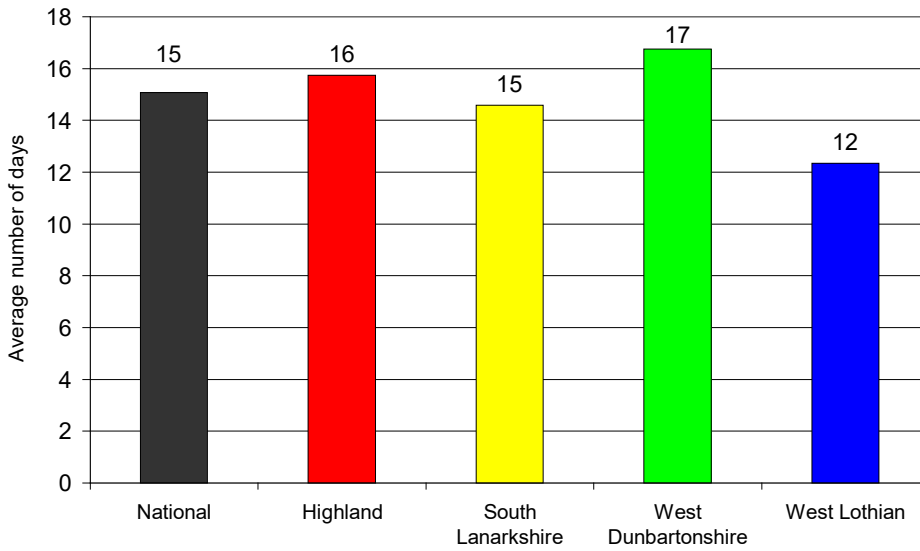


Chart 13 shows the average number of days from PF referral to the date of the Social Work assessment. It suggests that typically, it will take around 15 days from the date of PF referral (around two weeks) for an assessment to take place.