

SPECIAL ROADS ACT 1949
ROADS (SCOTLAND) ACT 1970

THE PERTH-DUNDEE-ABERDEEN-INVERNESS TRUNK ROAD A92/A94
STONEHAVEN BYPASS

The Secretary of State hereby gives notice that he has made the following Orders in connection with a diversion of the Perth-Dundee-Aberdeen-Inverness Trunk Road (A9) to form a bypass of Stonehaven in Grampian Region.

- (a) An Order under Section 14(1) of the Special Roads Act 1949 to provide for the construction of new roads, the improvement of some and the stopping up of other existing roads all for the purpose of forming new and improved connections with the new trunk road which constitutes the bypass.
- (b) An Order under Section 14(1) of the Roads (Scotland) Act 1970 to provide for the stopping-up of private means of access to premises from the said new trunk road.

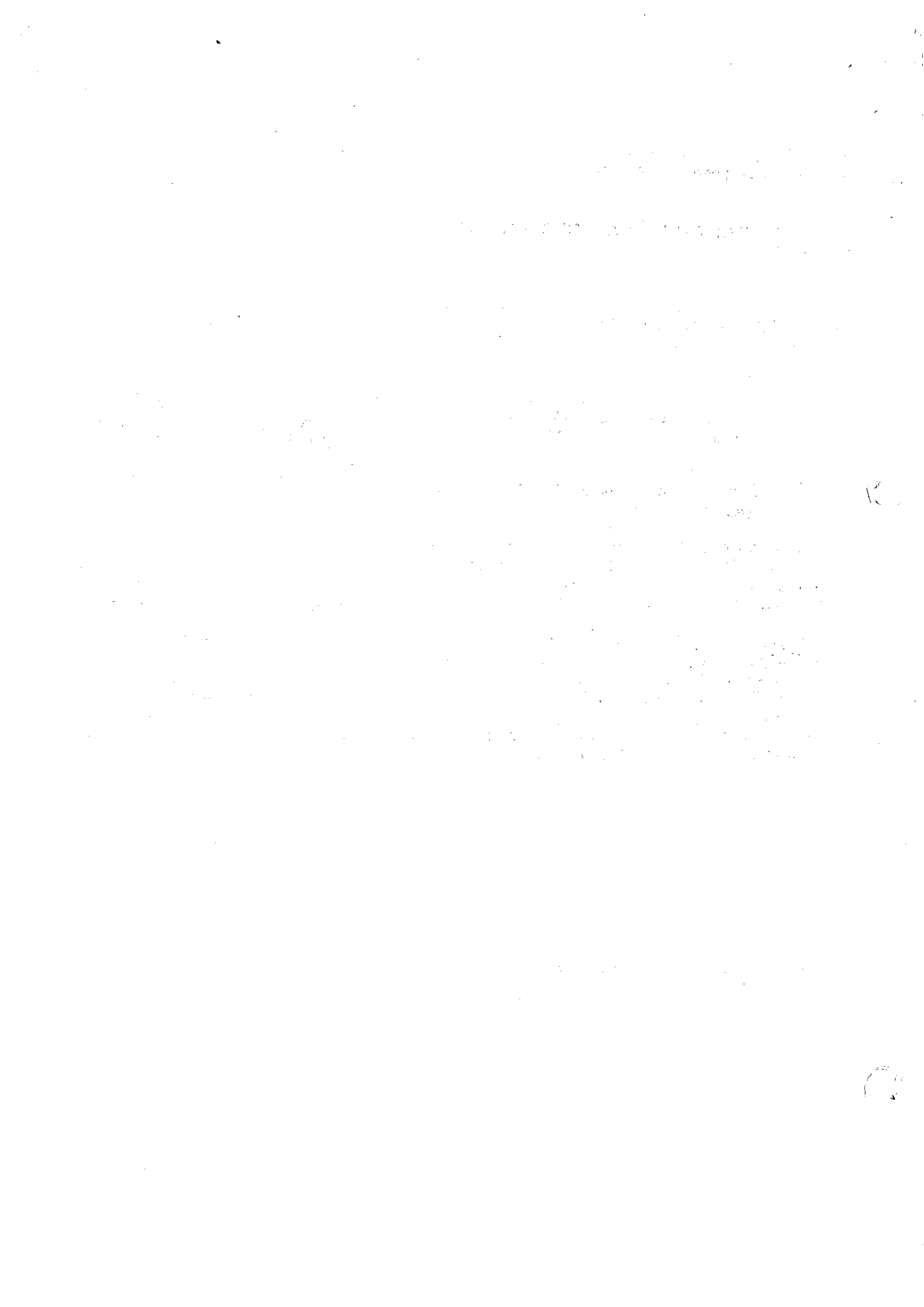
A copy of each Order with the plans referred to therein has been deposited at each of the offices of the Scottish Development Department, St Andrew's House, Edinburgh EH1 3DD; the Kincardine and Deeside District Council, Arduthie Road, Stonehaven; and the Grampian Regional Council, Woodhill House, Ashgrove Road West, Aberdeen.

Any person aggrieved by the Orders who desires to question their validity, or the validity of any provision contained therein, on the grounds that it is not within the powers of the Trunk Roads Act 1946, Special Roads Act 1949 or Roads (Scotland) Act 1970 or that any regulations made under those Acts have not been complied with in relation to the Orders may, within six weeks from 14 August 1981, make application to the Court of Session for the suspension or the quashing of the Orders or of any provisions contained therein.

E G Miller
Superintending Engineer

Scottish Development Department

31 July 1981

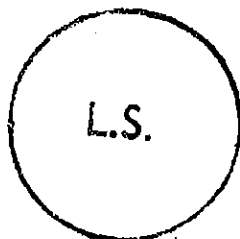


THE PERTH-DUNDEE-ABERDEEN-INVERNESS TRUNK ROAD (STONEHAVEN BYPASS
SIDE ROADS) ORDER 1981

The Secretary of State, in exercise of powers conferred by section 14(1) of the Special Roads Act 1949(a) and now vested in him (b), and of all other powers enabling him in that behalf, having complied with the provisions of Schedule 2 to the Trunk Roads Act 1946(c), hereby makes the following order:-

1. This order may be cited as the Perth-Dundee-Aberdeen-Inverness Trunk Road (Stonehaven Bypass Side Roads) Order 1981, and shall come into operation on 14 August 1981.
2. The following works are hereby authorised:-
 - (i) The construction of lengths of road (hereinafter referred to as "the new roads") along the routes described in Schedule 1 to this order to provide connections with the length of road (hereinafter referred to as "the new trunk road") to be provided in pursuance of the Perth-Dundee-Aberdeen-Inverness Trunk Road (Stonehaven Bypass) Order 1980(d).
 - (ii) The improvement of those lengths of road described in Schedule 2 to this order.
 - (iii) The stopping up of those lengths of road described in Schedule 3 to this order.
3. On the date on which notice is given by the Secretary of State to the Grampian Regional Council that the new roads are open for the purposes of through traffic, the new roads shall be transferred to that Regional Council as highway authority therefor.

Given under the Seal of the Secretary of State for Scotland.



W. W. SCOTT

Under Secretary

Scottish Development Department
New St Andrew's House
Edinburgh
31st July 1981

- (a) 1949 c.32
- (b) See the Transfer of Functions (Roads, Bridges and Ferries) Order 1955 (S.I. 1955/1955).
- (c) 1946 c.30 Schedule 2 to which is amended by section 51 of and Schedule 1 to the Roads (Scotland) Act 1970 (c.20).
- (d) S.I. 1980/1755 No 976 (S.72).

SCHEDULE 1

Routes of the New Roads

1. From a point on the Dundee-Montrose-Aberdeen Road (A92) 270 metres or thereby south of its junction with the private access to Gallaton Farm in a northerly direction for a distance of 320 metres or thereby as shown by stipple and numbered "1" on Sheet 1 in the plan folio numbered RUP/40/1/2 and headed "The Perth-Dundee-Aberdeen-Inverness Trunk Road (Stonehaven Bypass Side Roads) Order 1981", which plan folio is signed and sealed with reference to this order and deposited at the offices of the Scottish Development Department, New St Andrew's House, Edinburgh.
2. From a point on the Dundee-Montrose-Aberdeen Road (A92) 150 metres or thereby north of its junction with the private access to Easterside Farm in a generally north-westerly then northerly direction for a distance of 2.3 kilometers or thereby to join the new trunk road at a point 135 metres or thereby northwest of the private access to Dunnottar Square off the Dunnottar Road (Unclassified 71K) as shown by stipple and numbered "1" to "2" on Sheet 2 in the said plan folio.
3. From a point on the Dundee-Montrose-Aberdeen Road (A92) 122 metres or thereby south of its junction with the private access to Dunnottar Mains Cottages in a westerly direction for a distance of 20 metres or thereby to join the new road, described in paragraph 2 above as shown by stipple and numbered "3" on Sheet 2 in the said plan folio.
4. From a point on the new road described in paragraph 2 above where it intersects with the private access to East Newtonleys Farm for a distance of 24 metres or thereby in a south westerly direction as shown by stipple and numbered "4" on Sheet 2 in the said plan folio.
5. From a point on the new trunk road 100 metres or thereby south west of the private access to Dunnottar Square, off the Dunnottar Road (Unclassified 71K) in a south easterly direction for a distance of 200 metres or thereby as shown by stipple and numbered "5" on Sheet 2 in the said plan folio.
6. From a point on the new trunk road 80 metres or thereby south west of the private access to Dunnottar Square, off the Dunnottar Road (Unclassified 71K) in a generally westerly direction for a distance of 110 metres or thereby as shown by stipple and numbered "6" on Sheet 2 in the said plan folio.
7. From a point on the Glaslaw-Farrochie Road (Unclassified 70K) 530 metres or thereby west of Douglas Cottages in a north easterly direction for a distance of 230 metres or thereby as shown by stipple and numbered "7" on Sheet 2 in the said plan folio.
8. From a point on Broomhill Road 36 metres or thereby north east of its junction with Mill of Forest Road in a north easterly direction for a distance of 150 metres as shown by stipple and numbered "1" on Sheet 3 in the said plan folio.
9. From a point in the Stonehaven-Auchenblae road (C1K) 166 metres or thereby north west of its junction with the westernmost entrance to Farrochie Farmhouse in an easterly direction for a distance of 47 metres or thereby to join the new trunk road as shown by stipple and numbered "2" on Sheet 3 in the said plan folio.

11. That length of the Glaslaw-Farrochie Road (Unclassified 70K) from a point 530 metres or thereby west of Douglas Cottages in a south westerly direction for a distance of 66 metres or thereby as shown by cross hatching and numbered "15" on Sheet 2 in the said plan folio.
12. That length of the Broomhill Road from its junction with Mill of Forest Road in a north easterly direction for a distance of 40 metres or thereby as shown by cross hatching and numbered "3" on Sheet 3 in the said plan folio.
13. That length of Broomhill Road from a point 186 metres or thereby north east of its junction with Mill of Forest Road in a north easterly direction for a distance of 80 metres or thereby as shown by cross hatching and numbered "4" on Sheet 3 in the said plan folio.
14. That length of the Stonehaven-Auchenblae Road (C1K) from a point 254 metres or thereby north west of its junction with the westernmost entrance to Farrochie Farmhouse in a south-easterly direction for a distance of 66 metres or thereby as shown by cross hatching and numbered "5" on Sheet 3 in the said plan folio.
15. That length of the Stonehaven-Auchenblae (C1K) from a point 52 metres or thereby east of its junction with the westernmost entrance to Farrochie Farmhouse in a westerly direction for a distance of 162 metres or thereby as shown by cross hatching and numbered "6" on Sheet 3 in the said plan folio.
16. That length of the Slug Road (A957) from Toll Cottage for a distance of 125 metres or thereby in a north westerly direction as shown by cross hatching and numbered "2" on Sheet 4 in the said plan folio.
17. That length of the Slug Road A957 from a point 69 metres or thereby south east of its junction with the entrance of Redcloak Farm for a distance of 163 metres or thereby in a south easterly direction as shown by cross hatching and numbered "3" on Sheet 4 in the said plan folio.
18. That length of the Dundee-Stonehaven-Aberdeen Road (A92) from a point 60 metres or thereby south of its junction with the Stonehaven-Netherley Road (B979) for a distance of 104 metres or thereby in a north easterly direction as shown by cross hatching and numbered "6" on Sheet 5 in the said plan folio.
19. That length of the Stonehaven-Netherley Road (B979) from a point being its junction with the existing Dundee-Stonehaven-Aberdeen Road (A92) for a distance of 560 metres in a north westerly then northerly direction as shown by cross hatching and numbered "7" on Sheet 5 in the said plan folio.
20. That length of the Stonehaven-Netherley Road (B979) from a point 40 metres or thereby south of the railway bridge over the said road for a distance of 165 metres or thereby in a northerly direction as shown by cross hatching and numbered "8" on Sheet 5 in the said plan folio.
21. That length of the Stonehaven-Netherley Road (B979) from a point 245 metres or thereby north of the railway bridge over the said road for a distance of 10 metres or thereby in a north easterly direction as shown by cross hatching and numbered "9" on Sheet 5 in the said plan folio.

22. That length of the Stonehaven-Netherley Road (B979) from a point 47 metres or thereby south east of the access to New Mains of Ury Farm in a south easterly direction for a distance of 71 metres or thereby as shown by cross hatching and numbered "10" on Sheet 5 in the said plan folio.

23. That length of the Dundee-Stonehaven-Aberdeen Road (A92) from a point 515 metres or thereby south of its junction with the access to Logie Farm in a northerly direction for a distance of 1,075 metres or thereby as shown by cross hatching and numbered "1" on Sheet 6 in the said plan folio.

10. From a point on the Slug Road (A957) 110 metres or thereby north west of its junction with the access to Toll Cottage in a north westerly direction for a distance of 200 metres or thereby as shown by stipple and numbered "1" on Sheet 4 in the said plan folio.
11. From a point on the Stonehaven-Netherley Road (B979) 167 metres south of the railway overbridge in a northerly direction for a distance of 130 metres or thereby as shown by stipple and numbered "1" on Sheet 5 in the said plan folio.
12. From a point on the Stonehaven-Netherley Road (B979) 122 metres or thereby north of the railway overbridge in a northerly direction for a distance of 124 metres or thereby as shown by stipple and numbered "2" on Sheet 5 in the said plan folio.
13. From a point on the Stonehaven-Netherley Road (B979) 250 metres or thereby northeast of the railway overbridge in an easterly then south easterly direction to join the new trunk road as shown by stipple and numbered "3" on Sheet 5 in the said plan folio.
14. From a point on the new trunk road 186 metres or thereby north east of the railway bridge over the Stonehaven-Netherley Road (B979) in a northerly direction for a distance of 105 metres or thereby as shown by stipple and numbered "4" on Sheet 5 in the said plan folio.
15. From a point on the Stonehaven-Netherley Road (B979) 246 metres or thereby north of the railway overbridge in a south easterly direction for a distance of 36 metres or thereby as shown by stipple and numbered "5" on Sheet 5 in the said plan folio.

SCHEDULE 2

Lengths of Road to be Improved

1. That length of the Dundee-Montrose-Aberdeen Road (A92) from a point 480 metres or thereby south of its junction with the private access to Gallaton Farm in a northerly direction for a distance of 220 metres or thereby as shown by cross hatching and numbered "2" on Sheet 1 in the plan folio more particularly described in paragraph 1 of Schedule 1 above.
2. That length of the Dundee-Montrose-Aberdeen Road (A92) from a point 50 metres or thereby north of its junction with the private access to Gallaton Farm in a northerly direction for a distance of 196 metres or thereby as shown by cross hatching and numbered "3" on Sheet 1 in the said plan folio.
3. That length of Dundee-Montrose-Aberdeen Road (A92) from a point 50 metres or thereby south of its junction with the access to Easterside Farm in a northerly direction for a distance of 198 metres or thereby as shown by cross hatching and numbered "8" on Sheet 2 in the said plan folio.
4. That length of Dundee-Montrose-Aberdeen Road (A92) from a point 20 metres or thereby south of its junction with the access to Dunnottar Mains Cottages in a southerly direction for a distance of 104 metres or thereby as shown by cross hatching and numbered "9" on Sheet 2 in the said plan folio.
5. That length of the Smithy-Uras Road (Unclassified 81K) at Smiddymuir for a distance of 46 metres or thereby as shown by cross hatching and numbered "10" on Sheet 2 in the said plan folio.
6. That length of road from a point 180 metres or thereby north west of Smiddymuir for a distance of 50 metres or thereby as shown by cross hatching and numbered "11" on Sheet 2 in the said plan folio.
7. That length of the Perth-Stonehaven Road (A94) from its junction with the Glasgow Bridge-Smithy of Barras Road (C26K) in a north easterly direction for a distance of 70 metres or thereby as shown by cross hatching and numbered "12" on Sheet 2 in the said plan folio.
8. That length of the Glaslaw Bridge - Smithy of Barras Road (C26K) from its junction with the Perth-Stonehaven Road (A94) in a south westerly direction for a distance of 80 metres or thereby as shown by cross hatching and numbered "12A" on Sheet 2 in the said plan folio.
9. That length of the Perth-Stonehaven Road (A94) from a point 21 metres or thereby northeast of Douglas Cottages in an easterly direction for a distance of 39 metres or thereby as shown by cross hatching and numbered "13" on Sheet 2 in the said plan folio.
10. That length of the Perth-Stonehaven Road (A94) from its junction with the new trunk road for a distance of 180 metres or thereby in a north easterly direction as shown by cross hatching and numbered "14" on Sheet 2 in the said plan folio.

SCHEDULE 3

Lengths of Road to be Stopped Up

1. That length of the Dundee-Montrose-Aberdeen Road (A92) from a point 450 metres or thereby south of its junction with the private access to Gallaton Farm in a northerly direction for a distance of 530 metres or thereby as shown by zebra hatching and numbered '4' on Sheet 1 in the plan folio more particularly described in paragraph 1 of Schedule 1 above.
2. That length of the Dundee-Montrose-Aberdeen Road (A92) from a point 120 metres or thereby south of its junction with the access to Dunnottar Mains Cottages in a southerly direction for a distance of 220 metres or thereby as shown by zebra hatching and numbered '16' on Sheet 2 in the said plan folio.
3. That length of the Glaslaw Bridge-Smith of Barras Road (C26K) from a point 84 metres or thereby south of Glaslaw Bridge in a southerly direction for a distance of 30 metres as shown by zebra hatching and numbered '17' on Sheet 2 in the said plan folio.
4. That length of the Perth-Stonehaven Road (A94) from its junction with the Dunnottar Road (Unclassified 71K) in a westerly direction for a distance of 20 metres or thereby as shown by zebra hatching and numbered '18' on Sheet 2 in the said plan folio.
5. That length of the Glaslaw-Farrochie Road (Unclassified 70K) from a point 50 metres or thereby north west of its junction with the Perth-Stonehaven Road (A94) for a distance of 18 metres or thereby in a north westerly direction as shown by zebra hatching and numbered '19' on Sheet 2 in the said plan folio.
6. That length of the Glaslaw-Farrochie Road (Unclassified 70K) from a point 70 metres or thereby north west of its junction with the Perth-Stonehaven Road (A94) for a distance of 40 metres or thereby in a north westerly direction as shown by zebra hatching and numbered '20' on Sheet 2 in the said plan folio.
7. That length of Mill of Forest Road from a point 145 metres or thereby south east of its junction with Broomhill Road for a distance of 30 metres or thereby in a south easterly direction as shown by zebra hatching and numbered '7' on Sheet 3 in the said plan folio.
8. That length of Mill of Forest Road from a point 202 metres or thereby south east of its junction with Broomhill Road for a distance of 30 metres or thereby in a south easterly direction as shown by zebra hatching and numbered '8' on Sheet 3 in the said plan folio.
9. That length of Broomhill Road from a point 18 metres or thereby north east of its junction with Mill of Forest Road in a north easterly direction for a distance of 140 metres or thereby as shown by zebra hatching and numbered '9' on Sheet 3 in the said plan folio.
10. That length of Broomhill Road from a point 182 metres or thereby north east of its junction with Mill of Forest Road in a north easterly direction for a distance of 34 metres or thereby as shown by zebra hatching and numbered '10' in Sheet 3 in the said plan folio.

11. That length of the Stonehaven-Auchenblae Road (C1K) from a point 112 metres or thereby north west of its junction with the westernmost entrance to Farrochie Farmhouse in a north westerly direction for a distance of 84 metres or thereby as shown by zebra hatching and numbered '11' on Sheet 3 in the said plan folio.
12. That length of the Stonehaven-Auchenblae Road (C1K) from a point 46 metres or thereby west of its junction with the westernmost entrance to Farrochie Farmhouse in a north westerly direction for a distance of 30 metres or thereby as shown by zebra hatching and numbered '12' on Sheet 3 in the said plan folio.
13. That length of the Slug Road (A957) from a point 8 metres or thereby northwest of the west side of Toll Cottage for a distance of 146 metres or thereby in a north westerly direction as shown by zebra hatching and numbered '4' on Sheet 4 in the said plan folio.
14. That length of the Slug Road (A957) from a point 186 metres or thereby northwest of the west side of Toll Cottage for a distance of 218 metres or thereby in a north westerly direction as shown by zebra hatching and numbered '5' on Sheet 4 in the said plan folio.
15. That length of the Stonehaven-Netherley Road (B979) from the railway bridge over the said road in a southerly direction for a distance of 196 metres or thereby as shown by zebra hatching and numbered '11' on Sheet 5 in the said plan folio.
16. That length of the Stonehaven-Netherley Road (B979) from a point 100 metres or thereby north of the railway bridge over the said road in a north easterly and then north westerly direction for a distance of 170 metres or thereby as shown by zebra hatching and numbered '12' on Sheet 5 in the said plan folio.
17. That length of the Stonehaven-Netherley Road (B979) from a point 50 metres south east of its junction with the access to New Mains of Ury Farm in a south easterly direction for a distance of 114 metres or thereby as shown by zebra hatching and numbered '13' on Sheet 5 in the said plan folio.
18. That length of the Megray Golf Course Road (Unclassified 90K) from a point 54 metres or thereby south of its junction with the southernmost access to Megray Farm for a distance of 50 metres or thereby in a southerly direction as shown by zebra hatching and numbered '14' on Sheet 5 in the said plan folio.
19. That length of the Megray Golf Course Road (Unclassified 90K) from a point 128 metres or thereby south of its junction with the southernmost access to Megray Farm in a southerly direction for a distance of 30 metres or thereby as shown by zebra hatching and numbered '15' on Sheet 5 in the said plan folio.