

**Paper between Cabinet Secretary for Communities and Local Government and  
First Minister – 27 June 2016**

[REDACTED]

## CHILD POVERTY MEASUREMENT FRAMEWORK – PERFORMANCE AT A GLANCE 2015

■ Performance improving    
 ■ Performance maintaining    
 ■ Performance worsening    
 ■ New data not available



### Pockets

18.4% of working people earn less than <b>Living Wage</b>	Average <b>private nursery costs</b> in real terms - <b>£99.93</b>	28% of parent households are not <b>managing financially</b>	93% of parent households have a <b>bank account</b>
<b>Employment</b> rate of parents – 80%	<b>Underemployment</b> rate of parents – 8.0%	<b>Ratio of earnings</b> of lowest to highest earners – 15.7	8.9% of parents have <b>low or no qualifications</b>



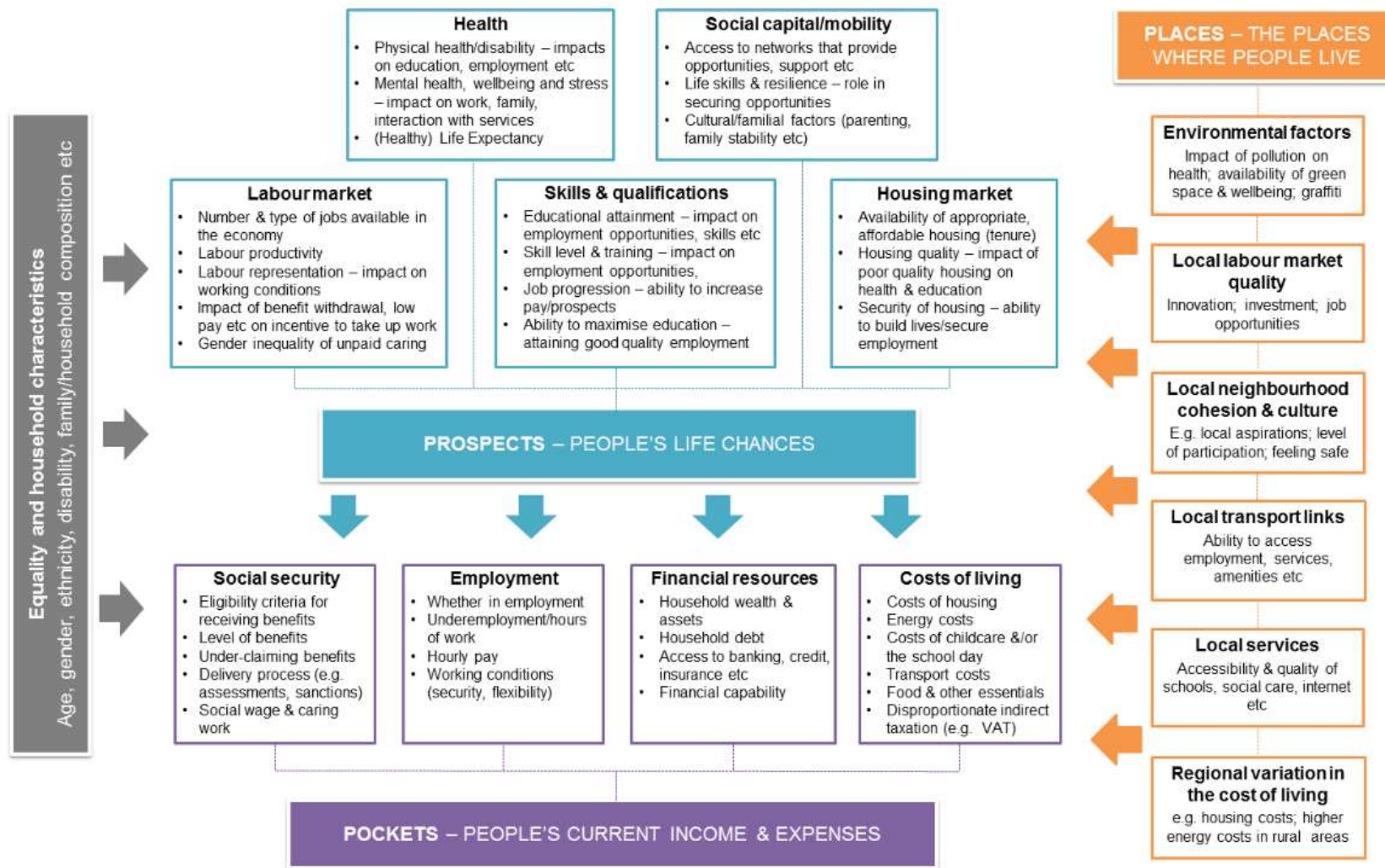
### Prospects

91.8% of the poorest children are in <b>good health</b>	19% of the poorest children have below average <b>mental health</b>	8.9% of the poorest children eat five <b>fruit and veg</b> a day	15.4% of the poorest children spend 4+ <b>hours at a screen</b> per day
16.0% of the poorest 15 year olds <b>smoke</b> one or more cigarettes a week	60.7% of the poorest children <b>played sport</b> last week	79.2% of the poorest children find it easy to <b>talk to their mother</b>	62.1% of the poorest children <b>feel accepted</b> by pupils in their class
53.0% of the poorest children perform well in <b>numeracy</b>	81.4% of the poorest children perform well in <b>reading</b>	56.3% of the poorest children perform well in <b>writing</b>	Mean <b>Strength and Difficulties</b> score for the poorest children – 9.2
89% of the poorest parent households are satisfied with <b>local schools</b> in the	84.4% of the poorest school leavers are in <b>positive destinations</b>	86.6% of the poorest children expect to be in <b>positive destinations</b>	<b>Modern apprenticeship</b> starts – 25,247
<b>Modern Apprenticeship</b> completion rate – 74%			



### Places

10.0% of average incomes is spent on <b>housing</b>	71% in the most deprived areas satisfied with <b>condition of their home</b>	24% in the most deprived areas feel they can <b>influence local decisions</b>	64.0% of neighbours <b>stop to talk</b> in the most deprived areas
<b>Crime victimisation</b> rate in the most deprived areas – 21.3%	27% say <b>drug misuse</b> is common in the most deprived areas	85% of adults in most deprived neighbourhoods say their neighbourhood is a <b>good place to live</b>	79% satisfied with <b>public transport</b> in the most deprived areas
62% within 5 minute walk of <b>greenspace</b> in the most deprived areas	<b>Employment rate gap</b> between most deprived areas and elsewhere – 18.2 percentage points	<b>Low qualifications gap</b> between most deprived areas and elsewhere – 16.5 percentage points	<b>Internet use gap</b> between most deprived areas and elsewhere – 8 percentage points



[REDACTED]