

## DDA defects associated with Footway(FW) &amp; Cycle Facility(CT) Inventory

Footway and Cycleway DDA Defect Description	Code
Kerb upstand adjacent to c/way < 80mm high (excl crossing points)	DD001
Lack of edge definition (upstand) at rear	DD002
Lack of dropped kerb	DD003
Kerb upstand at crossing > 6mm high	DD004
Width of dropped kerb at uncontrolled crossing is < 1200mm	DD005
Width of dropped kerb at controlled crossing is < 2400mm	DD006
Crossfall of transition area between footway level and dropped kerb level in excess of 1:12 (8.3%)	DD007
Gradient in excess of 1:11 (9%) on dropper kerb	DD008
Bus boarding kerb outwith 125 - 160mm range	DD009
Bus raised boarding area gradient in excess of 1:12 (8.3%)	DD010
Bus raised boarding area is <3000mm long	DD011
Step going length outwith 250-425mm range (depth of tread in the horizontal plane)	DD023
Flight has in excess of 12 steps	DD024
Flight has less than 3 steps	DD025
Rise for a single step outwith 150-170mm range	DD026
Lack of tonal contrast between step nosing and tread, and step nosing and riser	DD027
Step nosing is not non-slip	DD028
Nosing projects in excess of 25mm in horizontal plane	DD029
Risers are open	DD030
Nosings and not parallel with the other nosings	DD031
Nosings and not parallel with the ground/landing	DD032
Taping rails not provided in line with staircase treads	DD033
Stairs are not accompanied by a ramp	DD034
Lack of landings between successive flights	DD035
Longitudinal gradient in excess of 1:20 (5%)	DD036
Crossfall in excess of 1:40 (2.5%)	DD037
Abrupt change in gradient (should be rounded)	DD038
Identify areas (in excess of 10m <sup>2</sup> ) where surface irregularity exceeds 3mm in a vertical plane	DD039
Identify any gaps exceeding 10mm in a horizontal plane	DD040
Grating placed in area of main pedestrian flow	DD041
Obstacle free width is < 1300mm	DD042
Unobstructed height above footway is < 2300mm, incl overhanging vegetation	DD043
Inconsistent position of a succession of obstacles necessitates weaving	DD044
Width at footway is restricted locally to < 1000mm	DD045
Pole at front of footway outwith 500-600mm offset from c/way	DD046
Edge of footway has sudden level change	DD047
Lack of edge definition	DD048
Seating not provided every 50m	DD049
Seating width is < 500mm	DD050
Seating height is not 470-480mm off ground level	DD051
Seating does not have back rest	DD052
Seating does not have arm rests	DD053
Seating lacks adequate tonal contrast	DD054

Footway and Cycleway DDA Defect Description	Code
Bus stop can not be reached by adjoining footways	DD055
Footway at bus stop is < 3000mm wide	DD056
Width of clear space at bus shelter is < 1000mm	DD057
Ramp not accompanied by steps where the level difference exceeds 200mm	DD058
Ramp is a stepped ramp	DD059
Ramp and landings do not contrast tonally	DD060
Ramp longitudinal gradient in excess of 1:10 (10%) for ramp flight up to 600mm going	DD061
Ramp longitudinal gradient in excess of 1:12 (8.3%) for ramp flight up to 2m going	DD062
Ramp longitudinal gradient in excess of 1:15 (6.7%) for ramp flight up to 5m going	DD063
Ramp longitudinal gradient in excess of 1:20 (5%) for ramp flight up to 10m going	DD064
Individual ramp flight in excess of 10m long	DD065
Individual ramp rise in excess of 500mm	DD066
Sides of ramp not protected by a raised kerb of 100mm min height	DD067
Ramp crossfall in excess of 1:40 (2.5%)	DD068
Total rise in ramped section in excess of 2m	DD069
Total length of ramped section in excess of 50m, but less than 132m	DD070
Length of landing to top/bottom of flight is < 1200mm	DD071
Length of intermediate landing is < 1500mm	DD072
Length of landing at change in direction is < 1800mm	DD073
A landing has not been applied at change in direction	DD074
Landing longitudinal gradient in excess of 1:40 (2.5%)	DD075
Lack of adequate tonal contrast	DD076
Redundant street furniture	DD077
Free standing object does not meet min. height criteria of 1000mm	DD078
Gate latch inoperable by person with reach difficulties eg wheelchair user	DD079
Staggered barriers/access control less than 1200mm apart	DD080
Lack of tactile paving	DD081
Inappropriate tactile paving type	DD082
Inappropriate tactile paving colour	DD083
Inappropriate tactile paving layout	DD084
Outdated/worn profile on tactile paving	DD085
Tactile paving does not contrast tonally with surrounding paving	DD086
The back edge of the tactile surface is not at right angles to the direction of crossing/travel	DD087
Pedestrian route around a junction is not continuous	DD088
Width between handrails is < 1000mm	DD089
Width between handrails is < 1800mm (this does not allow two way movement)	DD090
Width between handrails is > 1800mm	DD091
Handrails not provided on both sides of flight	DD092
Handrails on flight not provided at height of 900-1000mm	DD093
Handrails not continuous across intermediate landings	DD094
Handrails do not extend 300mm past top and bottom of flight	DD095
End of handrail projects into route of travel	DD096
End of handrail does not return into wall/ground or have 100mm downturn (to prevent injury to users)	DD097
Handrail of material which is cold to the touch	DD098
Handrails are not tonally contrasted with background	DD099

Footway and Cycleway DDA Defect Description	Code
Circular handrails does not have cross section of 40-50mm diameter	DD100
Oval handrail does not have cross section of 50 x 35mm	DD101
Clear space between handrail and adjacent wall is < 60mm	DD102
Parking bay does not meet 4800 x 2400mm size	DD103
Accessible parking bay (parallel/kerb side) does not meet 6600 x 3600mm size	DD104
No dedicated accessible parking bay provided	DD105
Lack of 1.2m hatched aisles at dedicated accessible parking bay	DD106
Lack of signage at dedicated accessible parking bay	DD107
Clearance between parked vehicle and running lane is < 1200mm	DD108
Lack of footway facilities for parked vehicle	DD109
Footway is < 1500mm wide	DD110
Crossfall beside parked vehicle in excess of 1:20 (5%)	DD111
Crossing point not on obvious pedestrian desire line	DD112
Crossing point at junction bellmouth not at ideal location	DD113
Lack of refuge at crossing	DD114
Refuge at crossing is < 1500mm wide	DD115
Pedestrian crossing is zebra type	DD116

## DDA defects associated with Bus Stop – BS Inventory

Bus stop DDA Defect Description	Code
Bus boarding kerb outwith 125 - 160mm range	DD009
Bus raised boarding area gradient in excess of 1:12 (8.3%)	DD010
Bus raised boarding area is <3000mm long	DD011
Flag on bus stop pole is < 300 x 250mm	DD013
Route numbers on bus stop flag pole are < 50mm high	DD014
Lack of bus shelter	DD015
Bus shelter lacks seating	DD016
Passengers in bus shelter cannot see or be seen by oncoming vehicle	DD017
Bus shelter lacks adequate tonal contrast	DD018
Bus timetable positioned outwith 900-1800mm range off ground level	DD019
Bus timetable font size illegible (character height should be 15-25mm)	DD020
Lack of bus stop flag pole	DD021
Lack of bus stop timetable	DD022
Grating placed in area of main pedestrian flow	DD041
Pole at front of footway outwith 500-600mm offset from c/way	DD046
Seating width is < 500mm	DD050
Seating height is not 470-480mm off ground level	DD051
Seating does not have back rest	DD052
Seating does not have arm rests	DD053
Seating lacks adequate tonal contrast	DD054
Bus stop can not be reached by adjoining footways	DD055
Footway at bus stop is < 3000mm wide	DD056
Width of clear space at bus shelter is < 1000mm	DD057
Lack of adequate tonal contrast	DD076
Redundant street furniture	DD077
Free standing object does not meet min. height criteria of 1000mm	DD078
Parking bay does not meet 4800 x 2400mm size	DD103
Accessible parking bay (parallel/kerb side) does not meet 6600 x 3600mm size	DD104
No dedicated accessible parking bay provided	DD105
Lack of 1.2m hatched aisles at dedicated accessible parking bay	DD106
Lack of signage at dedicated accessible parking bay	DD107
Clearance between parked vehicle and running lane is < 1200mm	DD108
Lack of footway facilities for parked vehicle	DD109
Crossfall beside parked vehicle in excess of 1:20 (5%)	DD111

DDA defects associated with Miscellaneous street furniture – MF Inventory

DDA Defect Description	Code
Seating not provided every 50m	DD049
Seating width is < 500mm	DD050
Seating height is not 470-480mm off ground level	DD051
Seating does not have back rest	DD052
Seating does not have arm rests	DD053
Seating lacks adequate tonal contrast	DD054
Lack of adequate tonal contrast	DD076
Redundant street furniture	DD077
Free standing object does not meet min. height criteria of 1000mm	DD078

**Category 1 Defects include but shall not be limited to the following Defects:**

BPOT	Pothole $\geq$ 25mm deep, regardless of size. For shallower potholes, factors such as pedestrian/cycle flows, and the position of the pothole in the footway/cycle track relative to the normal track taken by pedestrians/cyclists must also be considered when categorising the Defect.
FDLV, RDLV	Abrupt difference in level between the footway and any trench, repair or ironwork.
SROK, SLPF	Rocking, uneven or missing/broken slabs resulting in a trip hazard.
STWT	Standing water which obstructs the footway to such an extent that pedestrians are likely to step off the footway to pass.



**SLPF** Slab profile – uneven/trips



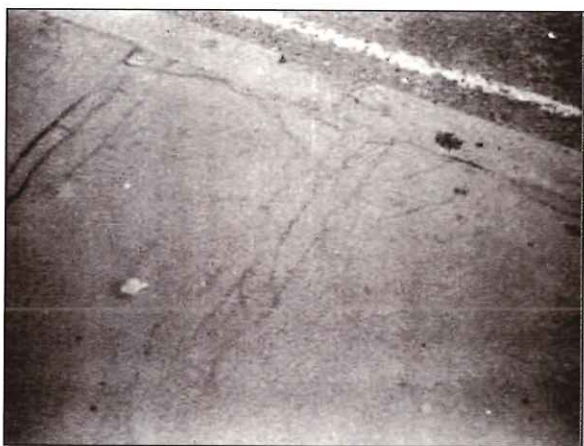
**SLCK** Slab Cracking



**BKPF** Block Profile



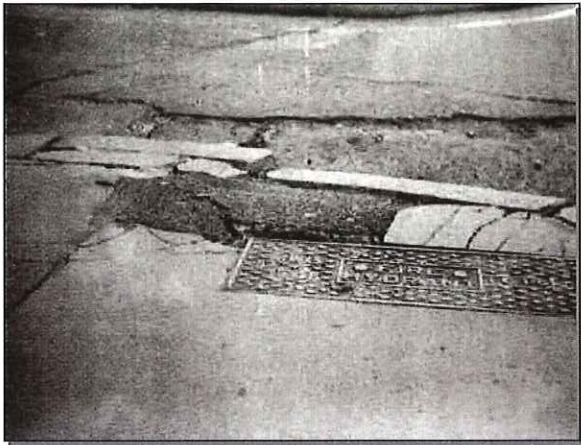
**BPOT** Bituminous surfacing – potholes



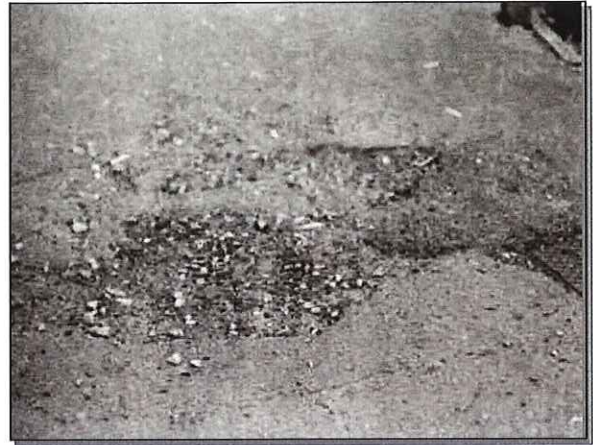
**BLCK** Bituminous Surfacing – Extensive Cracking



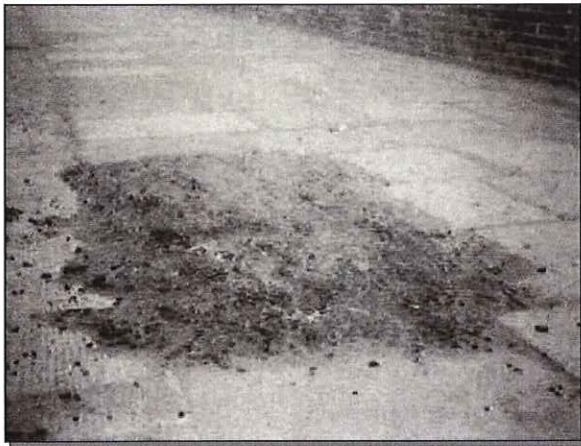
**BECK** Bituminous Surfacing – Extensive Cracking



**FPCK** Failed Patch – adjacent cracking



**FLMT** Failed Patch – loss of material



**FDLV** Failed Patch – difference in level



**OVGV** Overgrown by vegetation



**RLMT** Trench RI – loss of material



**RDLV** Trench RI – difference in level

