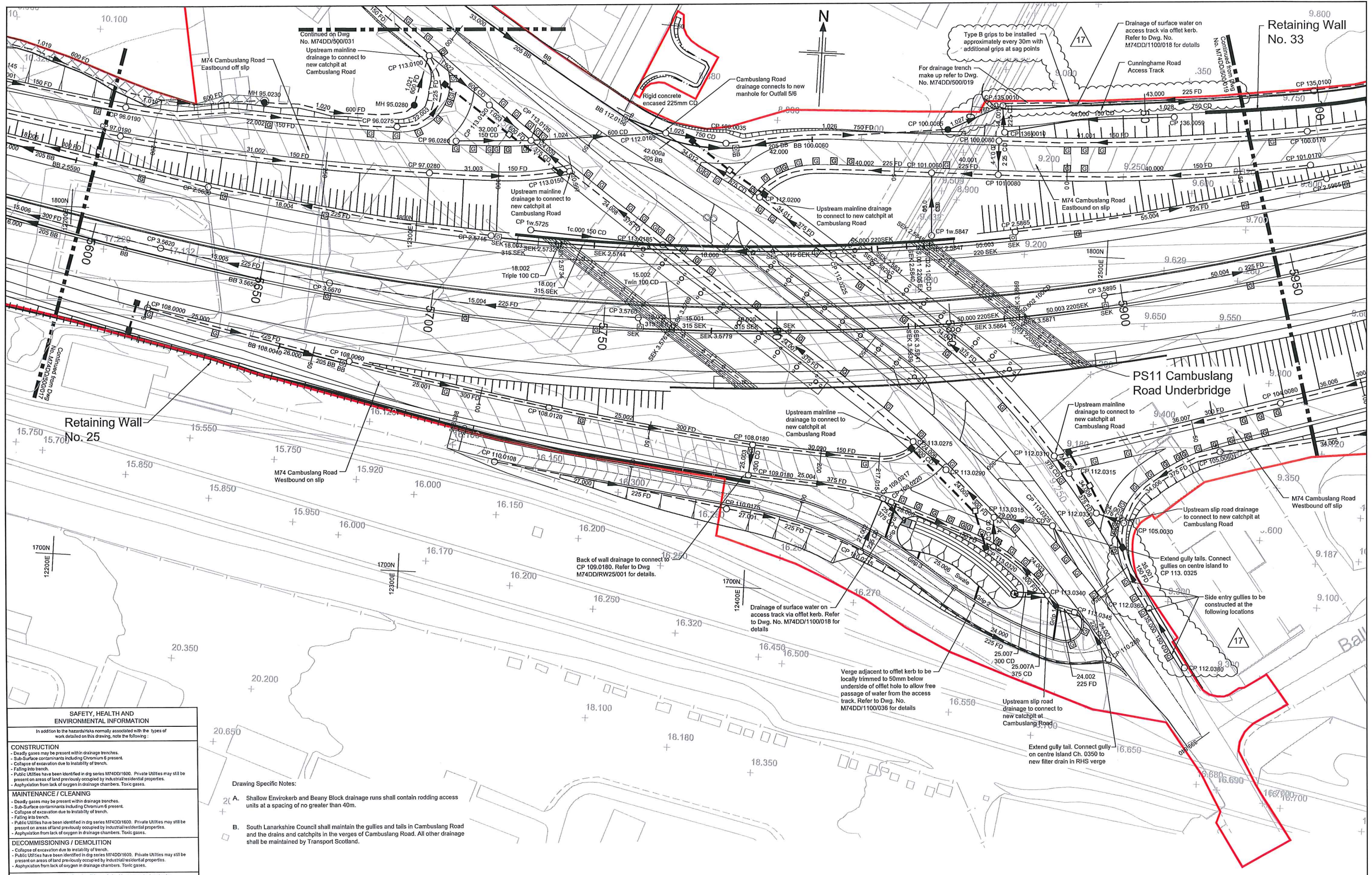


DO NOT SCALE

100
0 10

A1



SAFETY, HEALTH AND ENVIRONMENTAL INFORMATION

In addition to the hazards/risks normally associated with the types of work detailed on this drawing, note the following:

CONSTRUCTION

- Deadly gases may be present within drainage trenches.
- Sub-surface contaminants including Chromium 6 present.
- Collapse of excavation due to instability of trench.
- Falling into trench.
- Public Utilities have been identified in dig series M74DD/1600. Private Utilities may still be present on areas of land previously occupied by industrial/residential properties.
- Asphyxiation from lack of oxygen in drainage chambers. Toxic gases.

MAINTENANCE / CLEANING

- Deadly gases may be present within drainage trenches.
- Sub-surface contaminants including Chromium 6 present.
- Collapse of excavation due to instability of trench.
- Falling into trench.
- Public Utilities have been identified in dig series M74DD/1600. Private Utilities may still be present on areas of land previously occupied by industrial/residential properties.
- Asphyxiation from lack of oxygen in drainage chambers. Toxic gases.

DECOMMISSIONING / DEMOLITION

- Collapse of excavation due to instability of trench.
- Public Utilities have been identified in dig series M74DD/1600. Private Utilities may still be present on areas of land previously occupied by industrial/residential properties.
- Asphyxiation from lack of oxygen in drainage chambers. Toxic gases.

It is assumed that all works will be carried out by a competent contractor working, where appropriate, to an approved method statement.

- Drawing Specific Notes:
- A. Shallow Envirokerb and Beany Block drainage runs shall contain rodding access units at a spacing of no greater than 40m.
 - B. South Lanarkshire Council shall maintain the gullies and tails in Cambuslang Road and the drains and catchpits in the verges of Cambuslang Road. All other drainage shall be maintained by Transport Scotland.

Rev	Description	By	Date	Chkd	Auth
17	Issued for Construction - TQ 3368, 4109, 4180 incorporated.	SC	22/02/11	BM	JML
16	Issued for Construction - TQ 3877 incorporated, TQ 3157 incorporated in previous revision.	SC	21/01/11	BM	JML
15	Issued for Construction. Checkers comments incorporated.	SC	05/11/10	BM	JML
14	Issued for Review - TQ 1813, 2568, 2677, 2736, 2737, 2860, 2899, 2941, 2975, 3009, 3244, 3437, incorporated. TQ 2874 incorporated previously.	SC	14/10/10	BM	JML
13	Issued for Construction - Outfall 5/8 and Cambuslang Road. Checker comments incorporated.	TF	15/06/10	BM	JML
12	Issued for Review - TQ 2003, 2187, 2386 incorporated.	SC	19/03/10	BM	JML

Client

Interlink M74 JV

Morrison Construction | RailTeam Quality | MORGAN SINDALL | M-ALPINE

Agency of **TRANSPORT SCOTLAND**

Glasgow CITY COUNCIL

Client

JACOBS ATKINS

M74 COMPLETION DETAILED DESIGN

Title: DRAINAGE AND SERVICE DUCTS MAINLINE
CH. 5600 - CH. 5950
SHEET 18 OF 33

Original Scale	Designed/Drawn	Checked	Authorised
1:500	TF	MC	JML
Status	Drawing Number	Date	Rev
C	M74DD/500/018	02/07/08	17