

Clyde Regional Marine Plan

Statement of Public Participation

Introduction

The Marine (Scotland) Act achieved Royal assent on 10 March 2010. The Act provides a framework which will help to balance competing demands on Scotland’s seas. It introduces a duty to protect and enhance the marine environment and support sustainable development. In line with this duty the Scottish National Marine Plan, published in 2015, provides the policies and objectives for the management of Scotland’s seas.

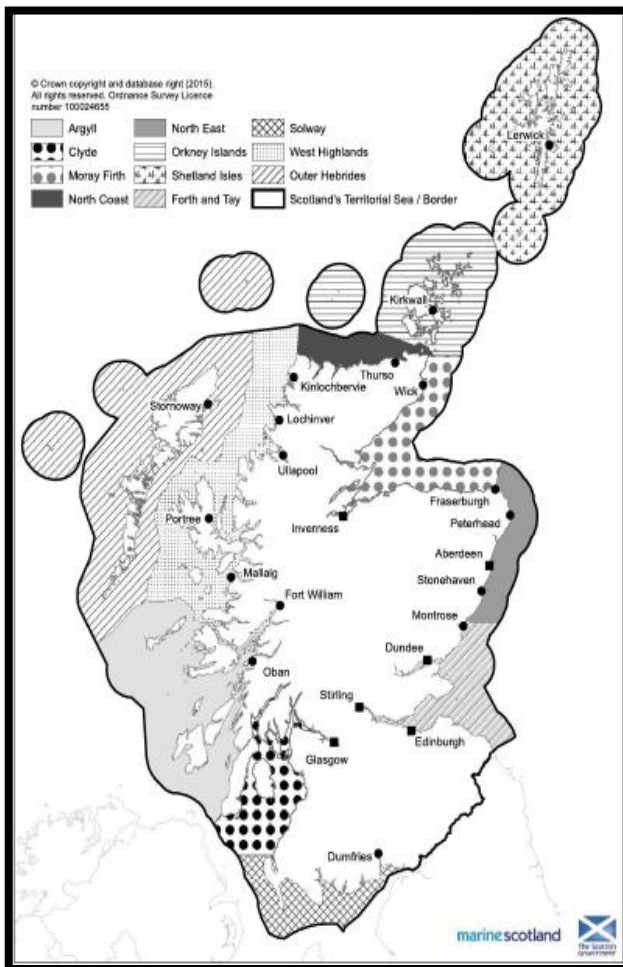


Fig 1: Illustrative Map of Scottish Marine Regions

The Marine Scotland Act allows for the creation of Scottish Marine Regions. These have been established and extend out to 12nm – see Fig 1. Following on from this, regional marine planning partnerships will be established to take forward marine planning in their area. The Clyde Marine Planning Partnership (CMPP) is one such partnership working to create a Regional Marine Plan for the Clyde. The CMPP is made up of a range of stakeholders from around the Clyde Marine Region (CMR) – a list is included in Annex B. Members meet every quarter to discuss the development of the Clyde Marine Plan. The membership of the partnership is open to new applications; the criteria for membership and how to apply are on the website -

<http://www.clydemarineplan.scot/about-us/about-the-clyde-marine-planning-partnership/>. The CMPP members aim

to build a marine plan based on consensus however the CMPP Board is there to facilitate decision-making if needed. For more information, including the core objectives of the CMPP, please see our website www.clydemarineplan.scot/about-us/about-the-clyde-marine-planning-partnership/.

The Plan will create a framework for integrated, sustainable and co-ordinated planning and management of the Clyde Marine Region’s environmental, economic and community

resource. Further information on the CMPP can be found at www.clydemarineplan.scot. Information on how marine planning will work with land-based planning can be found at <http://www.gov.scot/Topics/marine/seamanagement/national/marterrestrial>.

This Statement of Public Participation has been developed in accordance with Schedule 1 of the Act and approved for publication by Scottish Ministers. It also follows the 7 National Standards (<http://www.voicescotland.org.uk/Seven-NS/>) for Community Engagement. The National Standards for Community Engagement are clear principles that describe the main elements of effective community engagement. They are built around the values of: Inclusion, Support, Planning, Working together, Methods, Communication and Impact.

Participation commitment

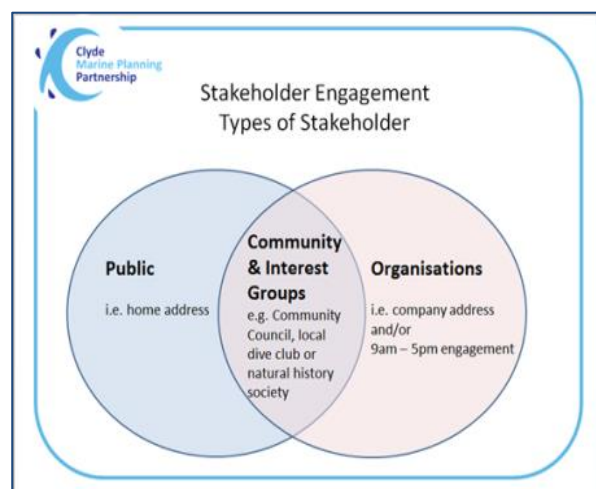
The CMPP is committed to:

- Providing opportunities for all stakeholders and members of the public to be involved in the development of policies that will impact upon them.
- Ensuring that arrangements for participation are inclusive, clear and transparent.
- Providing communications through a range of formats that are easy to understand.
- Ensuring that all representations are fully considered.

Involving stakeholders from the beginning of the planning process is vital for the creation of the Clyde Marine Plan. The participation process must involve a number of key sectors including environmental conservation/protection, recreation and commercial interests. However, we aim to engage as wide a range of stakeholders as possible including the members of the CMPP and other businesses and organisations with an interest in development of the Plan and also, importantly, members of the public.

Types of stakeholder – three groups of stakeholder types have been identified.

- Public - those are identified by a home address only and who we usually do not have contact details for unless they have joined our mailing list.
- Community and Interest Groups - groups and organisations who have a structure and are identifiable e.g. a community council or beach clean group.
- Organisations - organisations approachable through a business address and who are engaged mostly during working hours.



There are overlaps between these groups and individuals may move between groups as they engage in the planning process.

Throughout the planning cycle, the CMPP is open to discussion with interested parties and encourages all communities and individuals to be involved in the plan-making process. All CMPP events and consultation opportunities will also be posted here: www.clydemarineplan.scot/marine-planning/consultations-and-event/ and publicised via twitter (@clydemarineplan) as well as the Partnership’s regular e-newsletter which is free to receive – sign up via the website. Consultations will be open to everyone.

Preparation and participation timetable

This Statement of Public Participation (SPP) gives the process and participation timetable involved in creating the Clyde Regional Marine Plan and as the CRMP process develops, the SPP will be updated to give details on future events and information on events as they have occurred. Events will be planned throughout the region to ensure we have a good geographical spread and to give as many people as possible an opportunity to engage with the development of the Plan.

The process to create a Clyde Regional Marine Plan will involve the following 9 stages:

Stage 1: Initial meetings to raise awareness of marine planning and for Partnership Members to discuss the scope and content of the Clyde Regional Marine Plan: March – July 2017

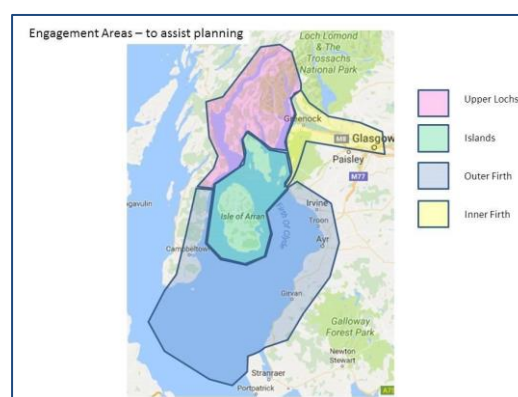
Initial meetings for CMPP Members to discuss the scope and content of the Clyde Regional Marine Plan			
Date	Location	Timing	Details
22.03.2017	Peelports Office, Robertson Street, Glasgow	10.30-16.00	Clyde Marine Planning Partnership (CMPP) Members meeting and Annual Members Meeting
18.04.2017	Clydeplan offices, Regent St, Glasgow	10.30-16.00	‘What is Marine Planning in the Clyde’ CMPP members meeting
27.06.2017	Abode Hotel, Glasgow	10.30-16.00	Clyde Marine Planning Partnership Members meeting NB – Quarterly Members meetings are not open to the public. Minutes are published on the website.

Continues over the page

Initial meetings to raise awareness of marine planning			
23.05.2017	Lochgilphead Community Centre	12.30-14.00	Marine Spatial Planning challenge introductory game – open session.
23.05.2017	Arrochar Three Villages Hall	19.30-21.00	
24.05.2017	West of Scotland College, Greenock	11.00-12.30	
04.07.2017	Riverside Museum, Glasgow	18.30-21.00	Marine Spatial Planning challenge introductory game - Targeted workshops working with divers and rowers to introduce marine planning and develop understanding.
05.07.2017	Arran High School, Lamlash	18.30-21.00	
07.07.2017	Royal West of Scotland Amateur Boat Club, Greenock	18.30-21.00	
03.05.2017	Village Hotel, Glasgow	10.00-12.00	Marine recreation stakeholder meeting, Royal Yachting Association Scotland, British Marine Scotland and Sail Scotland.
Other meetings			
25.05.2017	Victoria Quay, Edinburgh	11.00-15.00	Stakeholder meeting regarding Clyde scallop stock assessment.

Stage 2: Public and stakeholder workshops and events: September 2017 – August 2018

To assist with planning engagement, the CMPP has identified four geographical areas across the Marine Region. They are inner Clyde estuary, outer Clyde Estuary, upper lochs and islands. For planning purposes these boundaries are flexible and the areas should be regarded as a guide only.



Events will be held across the four areas to raise awareness of the Clyde Regional Marine Plan and invite representation on what should be included in the Plan and encourage input into policy options development.

Engagement with stakeholders will gather feedback and opinions on main issues and will inform the development of policy options. There will be a number of 1-2-1 and group meetings and events including sectoral working groups and workshops to inform the development of the Clyde Regional Marine Plan development.

The working groups will be made up of relevant Members of the CMPP and wider stakeholders will be invited to take part. Some events will be tailored to attract specific interest groups, to inform discussion on specific issues and sectors. Initially meetings will focus on:

- National sectoral ambitions and how the Clyde Marine Region can contribute.
- Opportunities and constraints including any interactions with other sectors.
- Cross-cutting theme of ‘climate change mitigation and adaptation’.
- The ecosystem approach i.e. taking account of how nature works and the benefits that it provides to people (ecosystem services).
- Brexit considerations – how it may impact the Regional Marine Plan.
- Development of policy options including spatial elements and SEA considerations.

Working Groups	
<p>The timing of these groups will vary. The working groups will meet as often as necessary to input to development of the pre-consultation draft.</p>	<p>Working Groups will be developed on:</p> <ul style="list-style-type: none"> • Fisheries (working with West Coast Regional Inshore Fisheries Group (WCRIFG), Clyde 2020 and wider stakeholders e.g. processors) • Aquaculture • Sports, recreation and tourism • Shipping, ports, harbours and ferries. <p>A regional socio-economic report will be commissioned to consider:</p> <ul style="list-style-type: none"> • A desk-top project to review marine and coastal elements of reports, strategies and plans which are already available to inform this area of work. • The work will inform development of social and economic objectives of this Plan.
Workshops	
<p>The timing and venues for these events will be advertised at least two weeks in advance. Initially a one-day workshop is planned for each topic, but if discussion or particular topics warrant more than one can be held.</p>	<p>Workshops will be facilitated on the following topics:</p> <ul style="list-style-type: none"> • Mobile species (mammals, sharks, skates, rays, seabirds and waterbirds) and underwater noise. • Marine Litter (especially plastic)

Engagement Events Undertaken, September 2017 to 2018

Date	Location	Timing	Details
18.09.17	Radisson Blu, Glasgow	10.30-15.30	Shipping, ports, harbours and ferries working group meeting.
23.09.17 and 30.09.17	Tarbert Village Hall	13:00-16:00	Public Dialogue sessions to discuss marine planning and the potential approach for policy. ¹
4.10.17	Loch Lomond and the Trossachs National Park HQ, Balloch	Evening session	Marine Spatial Planning Challenge session for Royal Town Planning Institute members.
14.10.17 and 28.10.17	Greenock	13:00-16:00	Public Dialogue sessions to discuss marine planning and the potential approach for policy. ¹
07.11.17	Loch Lomond and the Trossachs National Park HQ, Balloch	10:30-15:30	Aquaculture working group meeting.
28.11.17 and 29.11.17	Marr College, Troon	During school day	Working with groups of 14-16 year olds, we helped them to articulate their ambition for the Clyde and what they feel a marine plan can deliver. These events included Marine Spatial Planning Challenge sessions. ¹
30.11.17 and 31.11.17	Arran High School, Lamlash	During school day	
05.12.17, 07.12.17 and 08.12.18	Lochgilphead Joint Campus		
27.01.18	The Lauriston Hotel, Ardrossan	12:30-15:00	Open meeting to discuss the content of the Layman's Guide on the fish (pelagic/demersal), shellfish and sub tidal sediments sections of the Clyde Marine Region Assessment.
31.01.18	Atlantic Quay, Glasgow	All day event	Marine Spatial Planning e-game session with Members of the CMPP.
02.02.2018	Radisson Blu, Glasgow	10:00-15:00	Shipping, ports, harbours and ferries working group meeting.
19.02.18	Victoria Hotel, Rothesay	18:00-20:30	Understanding Marine Planning – open events – using Marine Spatial Planning Challenge.
20.02.18	Portavadie Marina	18:00-20:30	
22.02.18	Clydebank Town Hall	18:00-20:30	
23.02.18	Riverside Museum, Glasgow	18:00-20:30	
22.03.18	IET Teacher	10:30-15:00	Fisheries working group meeting with

¹ For Public Dialogue and Schools Engagement reports, see <http://www.clydemarineplan.scot/marine-planning/clyde-regional-marine-plan/#publicengagement>

Date	Location	Timing	Details
	Building, Glasgow		West Coast Regional Inshore Fisheries Group.
20.04.18	Kintyre Community Centre, Campbeltown	16:00-19:00	Open meeting to discuss the content of the Layman's Guide on the fish (pelagic/demersal), shellfish and sub tidal sediments sections of the Clyde Marine Region Assessment.
01.05.18	Loch Lomond and the Trossachs National Park HQ, Balloch	13:00-16:00	Aquaculture working group meeting.
24.05.18	The Lauriston Hotel, Ardrossan	10:30-16:00	Mobile species including birds and noise workshop – open meeting.
04.06.18	IET Teacher Building, Glasgow	10:30-13:00	Sport, recreation and tourism working group meeting.
09.06.18	Field Studies Council, Millport	10:30-15:00	Marine Litter workshop – open meeting.
24.08.18	Clydeplan, Glasgow	10:30-14:00	Fisheries working group meeting with West Coast Regional Inshore Fisheries Group.
28.08.18	Clydeplan, Glasgow	10:30-15:20	Sport, Recreation and Tourism working group meeting.

Engagement Events Planned (confirmed events will be added here and to our webpage www.clydemarineplan.scot/marine-planning/consultations-and-event/)

Date	Location	Timing	Details
------	----------	--------	---------

No events are currently planned.

Stage 3: Preparation of Pre-consultation draft Clyde Regional Marine Plan and early stage work to inform the Sustainability Appraisal, which includes Strategic Environmental Assessment (SEA): September 2017 - February 2019

The pre-consultation draft is a very early draft of the Regional Marine Plan which reflects discussions with stakeholders and the public and sets out the Clyde Marine Region objectives, policy options and gives detail on the potential impacts of the policies to be considered. It will be an adaptable document still open to considerable change. The pre-consultation draft will be published on the CMPP website and views will be sought on the content from the end of February 2019 until the end of April 2019.

Sustainability Appraisal - Strategic Environmental Assessment (SA-SEA)

The Clyde Regional Marine Plan will contribute to the management of the competing demands for the use of the Clyde Marine Region (see Fig. 2) while protecting and enhancing the marine environment. The Plan has the potential to give rise to significant environmental effects. A Strategic Environmental Assessment (SEA) will therefore be required under the Environmental Assessment (Scotland) Act 2005 and The Environmental Assessment of Plans and Programmes Regulations 2004. The SEA will be included within a Sustainability Appraisal, which ensures that the potential economic and social effects of the Plan are being considered from the start, alongside any potential environmental effects that will be accounted for through the SEA component. An interim SA-SEA will accompany the Plan at this pre-consultation phase.



Fig 2: Clyde Marine Region

The Plan will be produced using the Ecosystem Approach, which looks to: take account of how nature works; take account of the benefits that nature provides to people (ecosystem services); and involve people in decision-making.

Other Assessments

The Clyde Regional Marine Plan will also be assessed for impact on a wide range of areas including businesses, children, equality etc. Reports of these assessments will be prepared and published along with the Plan in stage 8.

Stage 4: 10 week opportunity for stakeholders to comment on the Pre-consultation draft Clyde Marine Plan and supporting documents: end February 2019 – end April 2019

At this stage the pre-consultation draft Plan and associated SA-SEA interim report will be made public on the website (www.clydemarineplan.scot) and people can respond either online, by sending their representations to consultations@clydemarineplan.scot, or by post to Clyde Marine Planning Partnership, Caspian House, Clydebank Business Park, Clydebank, G81 2NR.

The feedback at this stage will be collated and analysed and a summary published on the website. The CMPP will have regard to the representations made and they will be used to inform development of the consultation draft of the Clyde Regional Marine Plan.

Stage 5: Development of the consultation draft Clyde Regional Marine Plan in response to comments made during the pre-consultation period: May – August 2019

At this stage the Plan will be revised in light of comments received, and a draft Plan will be developed. Further dialogue will be undertaken with stakeholders where needed, and policy options will be refined in line with the SEA and other assessments. The consultation draft will then be submitted to Scottish Ministers for their agreement to its publication. Once permission is granted, the draft Plan will be published on our website and brought to the attention of interested parties.

Stage 6: 12 week consultation on the draft Clyde Regional Marine Plan and associated supporting documents (including SA-SEA, partial BRIA, EQIA and CRWIA): September - November 2019

There will be a public consultation for the draft Clyde Marine Plan. Consultation events will be held in multiple geographical locations (see previous section on geographical spread of events) designed to reach the wide range of communities of the Clyde. These events will be advertised online and in the printed press.

A feedback form and questionnaire will form the basis of the consultation; these will be available from the website and will be sent out in e-alerts to our e-newsletter subscribers.

In accordance with the Environmental Assessment (Scotland) Act 2005, the consultation period for the Plan and SEA Environmental Report will be advertised in relevant newspapers. The CMPP will take such further steps as it considers appropriate to ensure that the proposals contained in the consultation draft are brought to the attention of interested persons.

Stage 7: Revision of the draft Clyde Regional Marine Plan in response to comments made during consultation on the Plan and supporting information, and submitted to Scottish Ministers for approval to publish: December 2019 – March 2020

The draft Clyde Regional Marine Plan and relevant supporting documents will be revised in response to comments made during consultation. As stated in the Marine (Scotland) Act and subsequent Ministerial Direction to the CMPP, following the publication of the consultation draft Plan, the CMPP, along with Scottish Ministers, must consider whether or not to appoint an independent person to investigate and report on the proposals contained in the draft. Any independent review will take place at this stage, and prior to the Ministerial clearance process, and will be published.

Stage 8: Consideration by Scottish Ministers followed by adoption and publication of the Clyde Regional Marine Plan along with relevant supporting information: from March 2020

The CMPP must publish the Regional Marine Plan as soon as reasonably practicable after its adoption by Scottish Ministers, together with the following:

- any supporting assessments, documents and information agreed by Scottish Ministers
- a statement on any modifications that have been made to the proposals published in the consultation draft for the Plan, and the reasons for those modifications,
- a statement on recommendations from an appointed independent person (if applicable)
- a statement on recommendations from an independent person that have not been implemented (if applicable).

Stage 9: Review, monitoring and reporting on plan implementation, and any amendment of the Clyde Regional Marine Plan: from Plan adoption onwards

As the marine environment is constantly developing and evolving, it is important that CMPP members continue to review the Clyde Regional Marine Plan.

The Clyde Marine Planning Partnership must keep the following under review:

- the designation of any area as a Scottish marine region
- the preparation, adoption, amendment or withdrawal of a national or regional marine plan.
- the effects of the policies in the plan,
- the effectiveness of the policies in securing that the objectives for which the plan was prepared and adopted are met,
- the progress being made towards securing the objectives,
- the progress being made towards securing that the objectives in the regional marine plan secure the objectives in the national marine plan.

The CMPP will also prepare a report on the matters kept under review and submit this to the Scottish Ministers. The first report must be published within 5 years from the date of adoption of the Clyde Regional Marine Plan. Scottish Ministers must then consider and decide if the Regional Marine Plan needs to be amended, or even replaced.

Annex A Plan Making Process at a Glance

Stage	Description	Date
1	Initial meetings to raise awareness of marine planning and for Partnership Members to discuss the scope and content of the Clyde Regional Marine Plan	March – July 2017
2	Public and stakeholder workshops and events	September 2017 – August 2018
3	Preparation of Pre-consultation draft Clyde Regional Marine Plan and early stage work to inform the Sustainability Appraisal, which includes Strategic Environmental Assessment (SEA)	September 2017 - February 2019
4	10 week opportunity for stakeholders to comment on the Pre-consultation draft Clyde Marine Plan and supporting documents	End February 2019 – end April 2019
5	Development of the consultation draft Clyde Regional Marine Plan in response to comments made during the pre-consultation period	May – August 2019
6	12 week consultation on the draft Clyde Regional Marine Plan and associated supporting documents (including SA-SEA, partial BRIA, EQIA and CRWIA)	September – November 2019
7	Revision of the draft Clyde Regional Marine Plan in response to comments made during consultation on the Plan and supporting information, and submitted to Scottish Ministers for approval to publish.	December 2019 – March 2020
8	Consideration by Scottish Ministers followed by adoption and publication of the Clyde Regional Marine Plan along with relevant supporting information	From March 2020
9	Review, monitoring and reporting on plan implementation, and amendment of the Clyde Regional Marine Plan	From Plan adoption onwards

This Statement of Public Participation will be updated as the plan development progresses, and at the end of each key stage set out above. Notification will be posted on our website

and also via our newsletter and twitter feed. All events and other engagement opportunities will also be placed on our website www.clydemarineplan.scot and click on 'consultations' button on the home page or follow this link: www.clydemarineplan.scot/marine-planning/consultations-and-event/

For more information about events, past or future, please contact info@clydemarineplan.scot or call 0131 314 6782.

Please send any comments on the Statement of Public Participation to Clyde Marine Planning Partnership, Mariner Court, Clydebank Business Park, G81 2NR, telephone:0131 314 6782: info@clydemarineplan.scot : www.clydemarineplan.scot

The Scottish Government's 7 national standards of community engagement can be found here <http://www.voicescotland.org.uk/Seven-NS/>

Annex B: How does marine planning work with land based planning?

Land based (terrestrial) planning authorities comprise a range of organisations including:

- Strategic Planning Authorities e.g. Clydeplan, Scottish Government
- Local Planning Authorities e.g. Local councils
- National Park Authorities e.g. Loch Lomond and the Trossachs National Park

Loch Lomond and the Trossachs National Park and eight local authorities lie within the boundary of the CMR. These are: Argyll and Bute Council, North and South Ayrshire Councils; five councils are represented by Clydeplan the strategic development planning authority (West Dunbartonshire, Glasgow City, Renfrewshire, Inverclyde and South Lanarkshire Councils).

Terrestrial planners are responsible for planning down to Mean Low Water Springs and for marine fish farming (finfish and shellfish). They are also required to consider the National and Regional Marine Plans in their decision-making; marine plans extend up to Mean High Water Springs so the two planning regimes overlap in the intertidal zone, between low and high water springs.

The [Planning Circular 1/2015](#) entitled 'The relationship between the statutory land use planning system and marine planning and licensing' gives guidance about how the two systems should work together and encourages planners to communicate effectively and to align policies to best effect where possible. The CMPP is striving to achieve this integration between the land and sea planning systems.

Annex C: Members of the CMPP (as of November 2018)

- Argyll & Bute Council
- British Marine Scotland
- CalMac Ferries Ltd
- Clydeplan
- Community of Arran Seabed Trust (COAST)
- Field Studies Council Millport
- Loch Lomond & The Trossachs National Park
- North Ayrshire Council
- Clydeport Operations Ltd
- Royal Society for the Protection of Birds (RSPB)
- Royal Yachting Association Scotland
- Scottish Canals
- Scottish Environment LINK
- Scottish Environment Protection Agency (SEPA)
- Scottish Natural Heritage (SNH)
- Scottish Sea Anglers Conservation Network
- South Ayrshire Council
- The Crown Estate
- The Scottish Salmon Company
- Visit Scotland

Individual Members

- Rhona Fairgrieve, Scottish Coastal Forum
- Alastair McNeill, West Coast Regional Inshore Fisheries Group
- Elaine Whyte - Clyde Fishermen's Association
- Isabel Glasgow – Chairperson