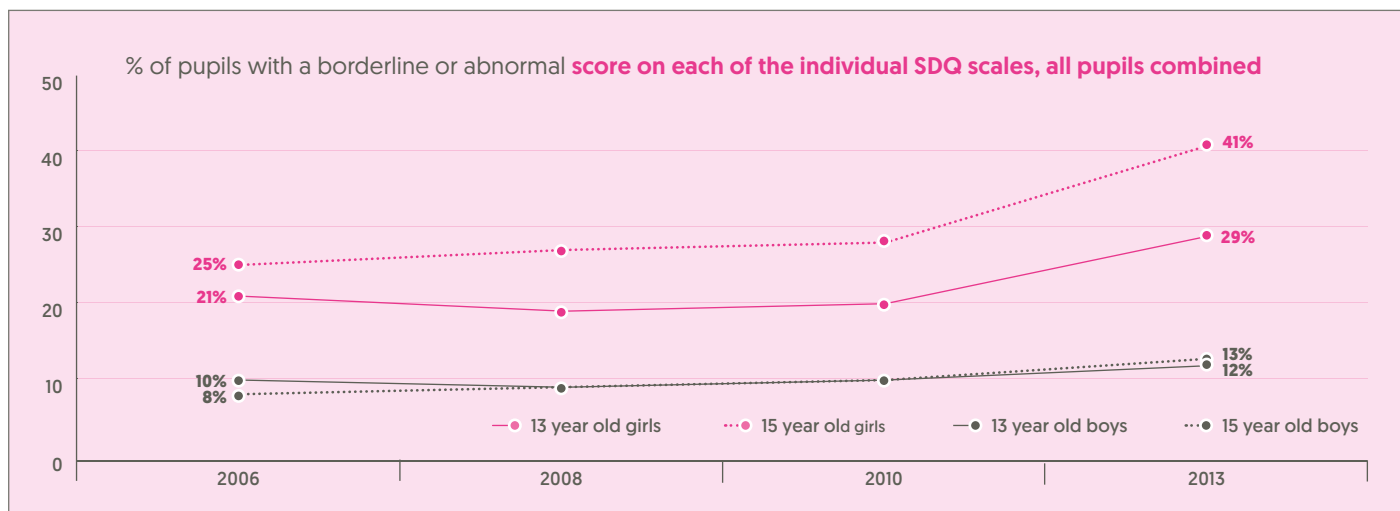
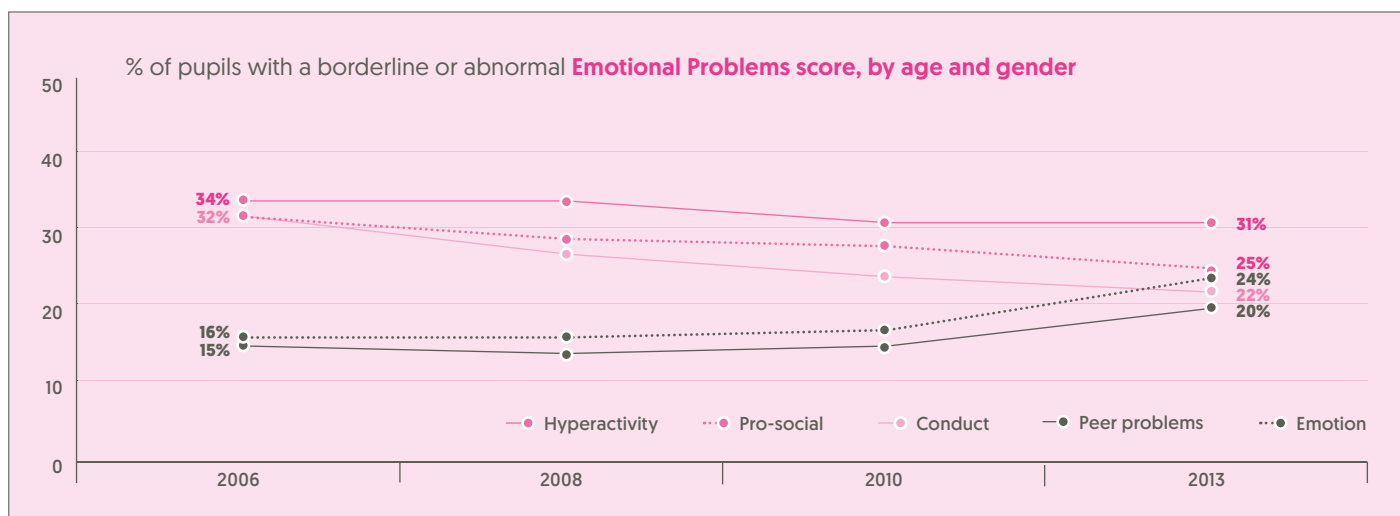
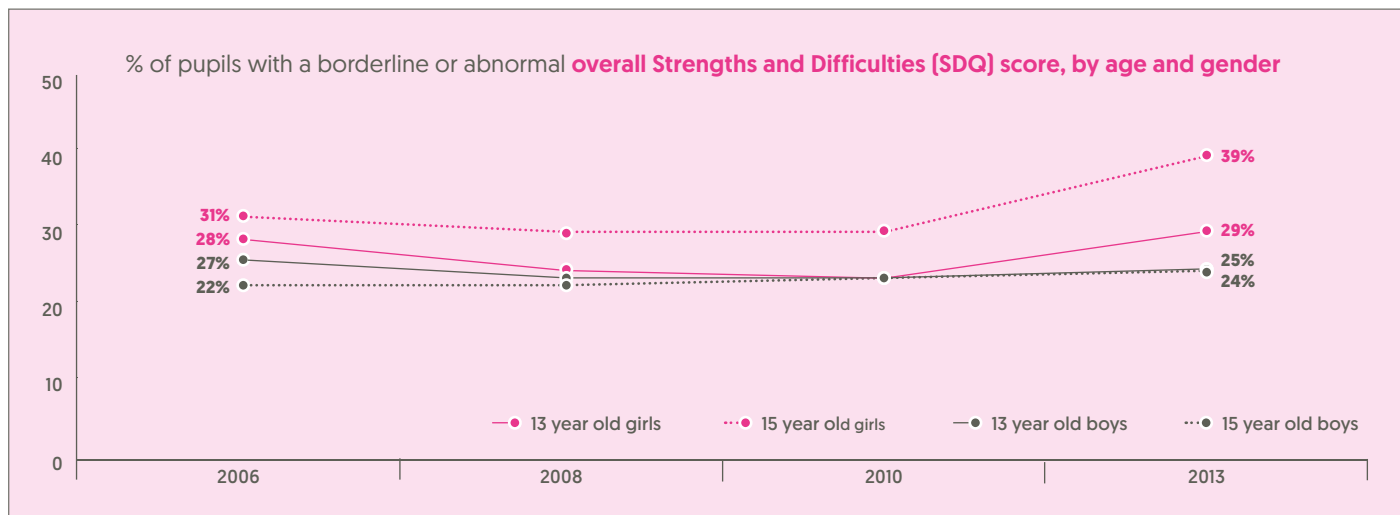


SCOTTISH SCHOOLS ADOLESCENT LIFESTYLE AND SUBSTANCE USE SURVEY

MENTAL HEALTH AND WELLBEING AMONG ADOLESCENTS INFORMATION SHEET

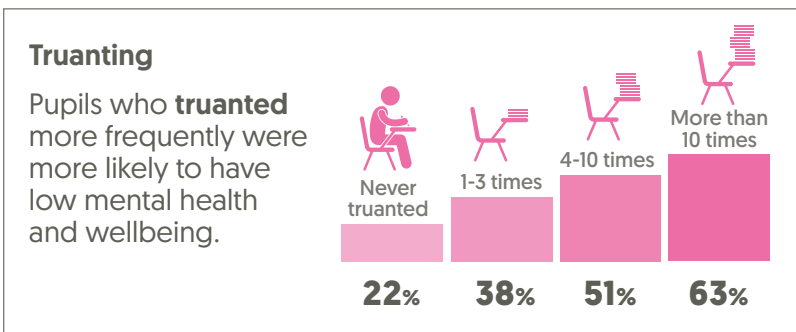
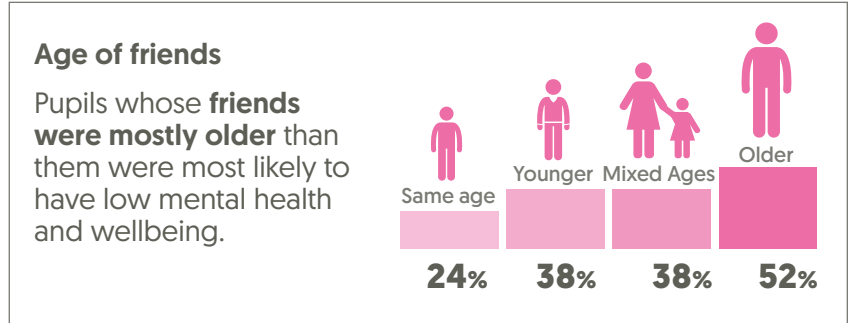
SALSUS is a continuation of a long established series of national surveys about **smoking, drinking and drug-use** among Scottish teenagers.

The survey also contains a **wealth of information** about young people in Scotland beyond substance use. Here, we explore **mental health and wellbeing**.



Key drivers of mental health and wellbeing

Throughout this information sheet low mental health and wellbeing is defined as having a borderline or abnormal SDQ score. In each figure, only the percentage of each subgroup (e.g. those with no close friends) that have low mental health and wellbeing are shown.



Equalities and mental health and wellbeing

