

Question 1



The 'See Hear' strategy talks about care pathways on pages 6.

What difference do you think care pathways will make to you?

Please write your answer here: CARE PATHWAYS COULD HAVE IMPORTANT CONSEQUENCE FOR PEOPLE LIKE ME. A PERSON WHO DEVELOPED A HEARING LOSS, OVER A NUMBER OF YEARS, DUE TO BONE DEAFNESS AND IT COULD HELP OTHERS, LIKE ME, WHO HAVE SPEECH PROBLEMS AND DYSLEXIA. DYSLEXIA IS NOW RECOGNISED AS A LEARNING DIFFICULTY. I DID NOT KNOW I HAD DYSLEXIA UNTIL I TOOK A COURSE IN ENGLISH LAW AGE 60. CARE PATHWAYS COULD HELP CHILDREN, PARENTS AND ADULTS WITH A RECOGNISED SENSORY IMPAIRMENT AND PEOPLE AT RISK OF SENSORY LOSS DUE TO BONE DEAFNESS GET HELP THEY NEED BY ADDRESSING THE PROBLEMS THEY HAVE IN A REASONABLE TIME. THUS SAVING MONEY SPENT ON DELAYS WHICH CAUSE MENTAL PROBLEMS AND EXAM PROBLEMS. SAVE MONEY SPENT ON PRISON SENTENCES CAUSED BY MENTAL PROBLEMS AND SOCIOLOGICAL PROBLEMS CAUSED BY HEARING LOSS, DYSLEXIA, SIGHT LOSS, DEAFBLINDNESS AND DUAL SENSORY LOSS.



How can we make sure that services and support meet your needs?

Please write your answer here: FIRST OF ALL CREATE A CENTRAL ORGANISATION WHICH HAS OVERALL AUTHORITY OVER SOCIAL WORKERS, HOSPITALS AND EDUCATION AUTHORITIES, CREATE A STRATEGIC FRAMEWORK WHICH COVERS CRADLE TO GRAVE SENSORY IMPAIRMENT, SET AGAINST A BACKGROUND OF INCREASE DEMAND FOR GREATER EFFICIENCY AND EFFECTIVE AVAILABLE RESOURCES AND HEALTH AND SOCIAL CARE INTEGRATION, RECOGNISE THAT DIFFERENT TYPES OF SENSORY IMPAIRMENT REQUIRE DIFFERENT RESPONSES, MAKE SURE THAT RESPONSIBILITY FOR SYSTEMS OF CARE LIES WITH STATUTORY AGENCIES. DEVELOPE A PARTNERSHIP APPROACH WHICH INVOLVES HEALTH AND SOCIAL CARE AND PUBLIC SERVICE PROVISION, IDENTIFY ALL TYPES OF SENSORY IMPAIRMENT TO ENSURE THAT NEEDS ARE RECOGNISED. IN THE CASE OF CHILDREN A SENSORY IMPAIRMENT STRATEGY SHOULD NOT BE THE SOLE DRIVER FOR DEVELOPMENTS ACROSS HEALTH, EDUCATION AND SOCIAL CARE SERVICES, BUT, A SENSORY IMPAIRMENT STRATEGY COULD BRING THE RELEVANT AGENCIES TOGETHER TO SHARE INFORMATION ABOUT CURRENT AND BEST PRACTICE TO AVOID DUPLICATION.



If you are a care provider what changes will you need to make to put care pathways into place?

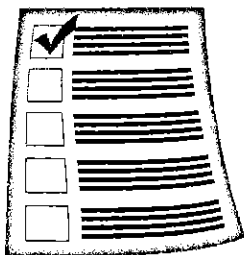
Please write your answer here:



How will you make these changes?

Please write your answer here:

Question 2



On pages 7 and 8 we talk about the things that need to be in place for care pathways to work well.

Which of these things do you think is most important for a care pathway to work well?

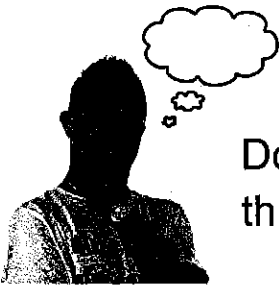
Please write your answer here: FOR A CARE PATHWAY TO WORK WELL FOR OVER-50s AND OVER-70s SUPPORT NEEDS TO BE TAILORED TO ADDRESS BOTH THEIR HEARING AND SIGHT LOSS, PARTICULARLY DEMOGRAPHIC CHANGES WHICH HAVE A DIRECT AFFECT ON OLDER PEOPLE LIKE THE NEED TO RECOGNISE THAT DIFFERENT TYPES OF SENSORY IMPAIRMENT WILL REQUIRE DIFFERENT RESPONSES.



Which of these things do you think will be the hardest to put in place?

Please write your answer here: THE INTERESTS OF PEOPLE WHO HAVE LONG TERM SENSORY IMPAIRMENT WHICH CONFLICT WITH THE INTEREST OF PRIVATE PROFIT MAKING ORGANISATIONS WHO REPLACED NATIONAL HEALTH, LONG-STAY HOSPITALS, HOSPITALS WILL MAKE IT HARD TO IMPLEMENT NATIONAL POLICIES WHICH ADDRESS:

- 1) A VARIETY OF ISSUES ACROSS THE HEALTH AND SOCIAL CARE AGENDA, FOR EXAMPLE LONG STAY PATIENTS IN PRIVATE NURSING HOMES;
- 2) INTEGRATION OF SOCIAL AND HEALTH CARE SERVICES FOR CHILD AND ADULT CARE;
- 3) THE INCREASED OF DIMINISHING RESOURCES TO BE MET THROUGH THE INTRODUCTION OF DIFFERENT WAYS OF RESPONDING TO NEED AND DELIVERING SUPPORT.



Do you think we have missed anything out of the list of things that need to be in place?

Please write your answer here: YES THE SOCIOLOGICAL EFFECT OF THE CHANGES NECESSARY TO IMPLEMENT A STRATEGIC FRAMEWORK FOR MEETING THE NEED OF PEOPLE WITH A SENSORY IMPAIRMENT IN SCOTLAND, FOR EXAMPLE THE EFFECT OF A STRATEGIC FRAMEWORK ON DEAF CULTURE.

Question 3



On pages 10 and 11 there are 6 recommendations of things we would like to see happen in the future.



Which of these recommendations do you think will be the hardest to put in place?

Please write your answer here: THE HARDEST RECOMMENDATION TO IMPLEMENT WILL ^{BE} (C) ON PAGE 10 BECAUSE OF VESTED INTERESTS FOR EXAMPLE GETTING THE DEAF CULTURE TO AGREE WHAT IS MEANT BY THE STATEMENT. PERSONALLY I WOULD LIKE SEE RECOMMENDATION (a) HAPPEN IN THE FUTURE.



Which of these recommendations will make the biggest difference and why?

Please write your answer here: I THINK THAT RECOMMENDATION (a) IS THE MOST IMPORTANT BECAUSE, IF IT WAS IMPLEMENTED, IT WOULD STOP DELAYS IN PEOPLE ADDRESSING, FOR EXAMPLE, THEIR HEARING LOSS AND TACKLE THE PROBLEM OF GPs NOT REFERRING HEARING PROBLEMS FOR INTERVENTION.



Are there any other recommendations you would like to see?

Please write your answer here: DNA TESTS FOR GENERIC ASSESSMENTS AND PEOPLE WITH A LEARNING DISABILITY. DNA TESTS FOR HIDDEN AND UNTREATED SENSORY LOSS, DNA TESTS FOR BONE DEAFNESS, A CHECK MADE ON CHARITIES PROVIDING SERVICES.

Question 4



This question is for people who use or provide sensory impairment services.

Can you tell us what you think of the services you have received or given?

Please write your answer here:

Question 5



What difference will this strategy make to your life?

Please write your answer here: NONE BUT IF IT HAD BEEN IN PLACE AFTER I RETIRED I WOULD HAVE BEEN SAVED EMOTIONAL STRESS FIGHTING VARIOUS AUTHORITIES FOR MISINTERPRITING THE LAW.

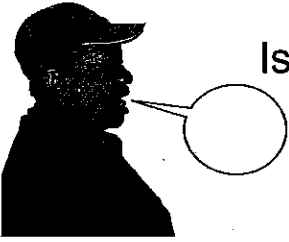
Question 6



Do you think the 'See Hear' strategy will meet the needs of children and young people?

Please write your answer here: *IT MAY*

Question 7



Is there anything else you would like to tell us?

Please write your answer here: *NO*