

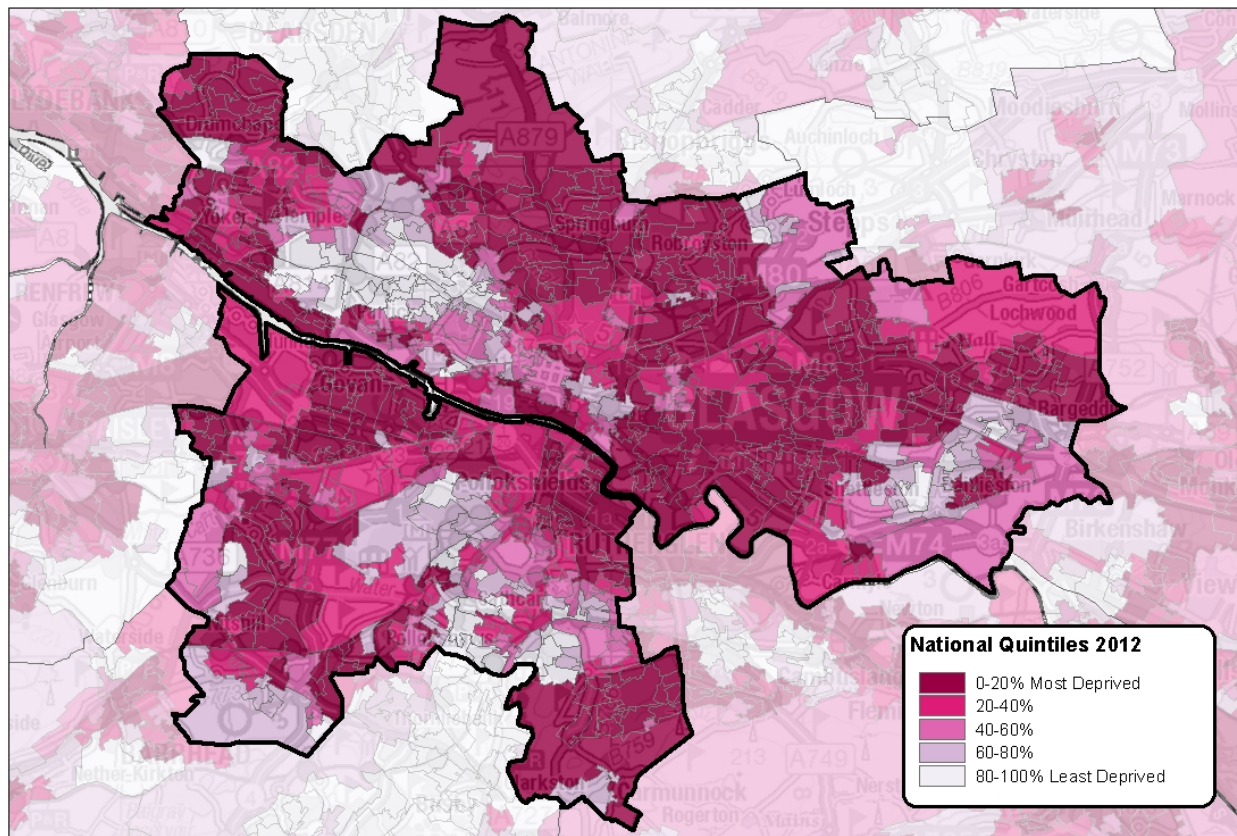
## Local Authority Summary – SIMD 2012

### Glasgow City

<http://simd.scotland.gov.uk/publication-2012>

This provides a summary of key findings from the Scottish Index of Multiple Deprivation (SIMD 2012) published on 18 December 2012.

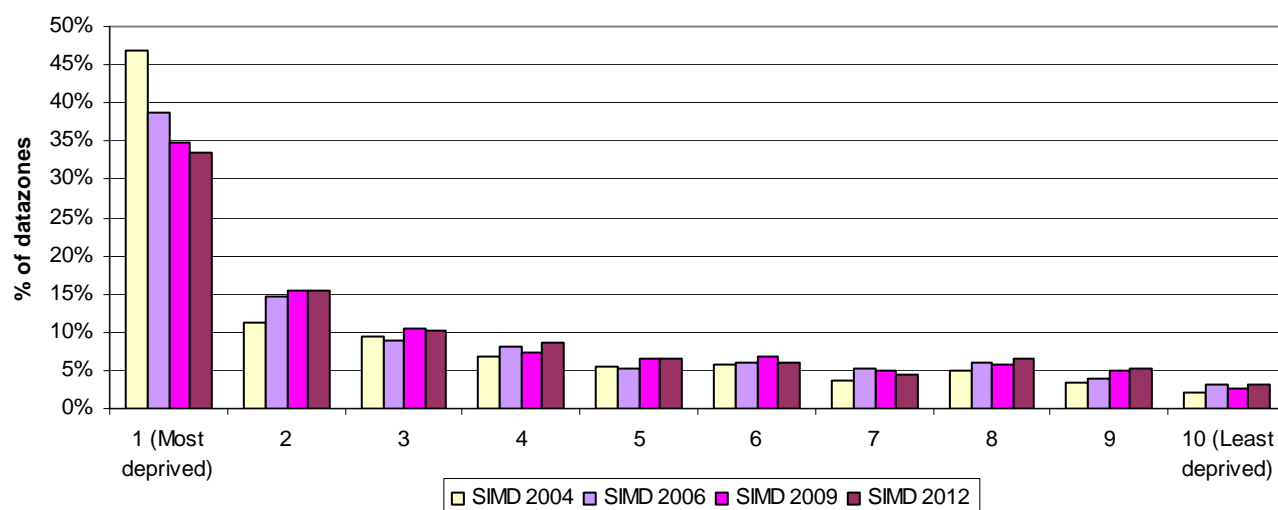
**Map: Levels of deprivation in Glasgow City in SIMD 2012 by quintile**



Reproduced by permission of Ordnance Survey on behalf of HMSO. © Crown copyright and database right (2012). All rights reserved. Ordnance Survey Licence number 100024655.

The decile graph shows what percentage of Glasgow City's datazones are found in each of the SIMD deciles. Most of Glasgow City's datazones are found in the more deprived deciles in SIMD 2012. This is similar to the pattern observed for SIMD 2009.

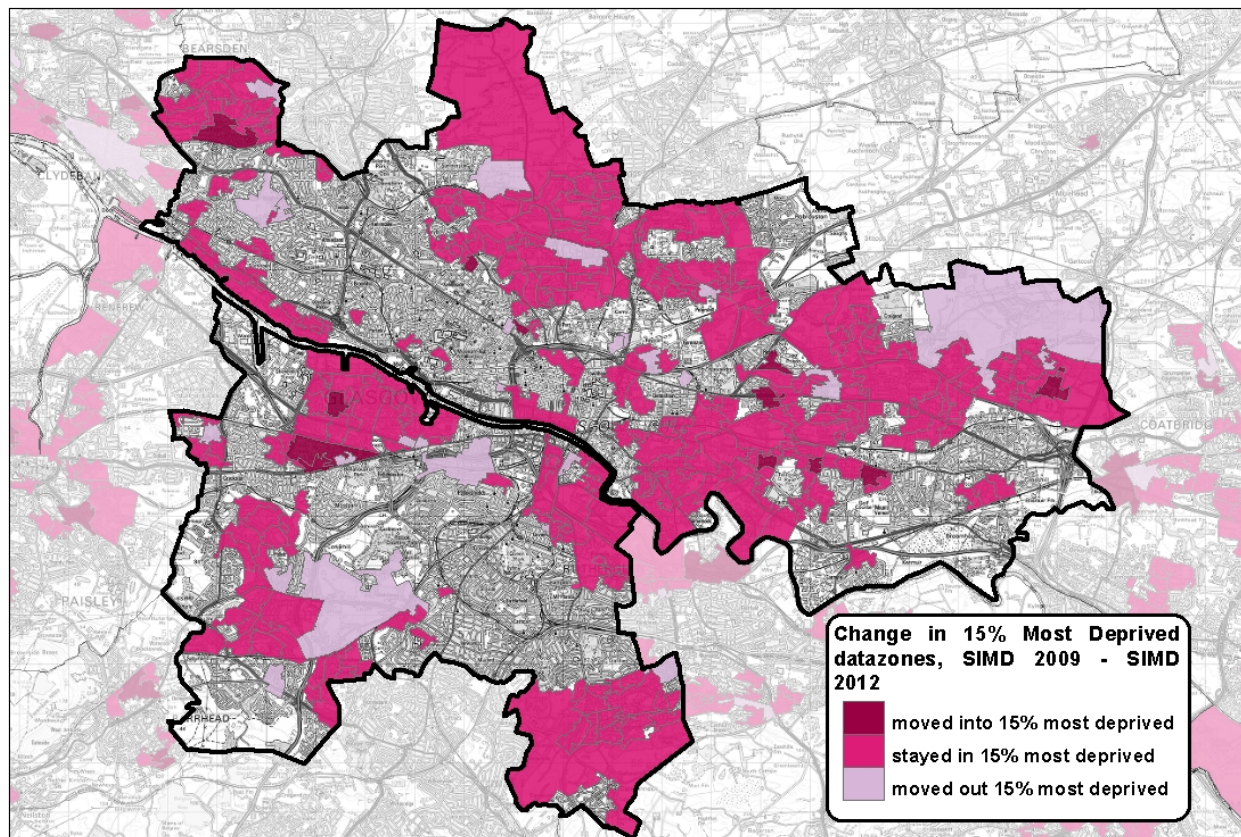
**Decile graph: distribution of Glasgow City's datazones**



## Most deprived datazone in Glasgow City

The most deprived datazone in Glasgow City in the overall SIMD 2012 is S01003582, which is found in the Intermediate Zone of Possil Park and the Scottish Parliament Constituency of Glasgow Maryhill. It has a rank of 2, meaning that it is amongst the 5% most deprived areas in Scotland.

## Change map: datazones in Glasgow City which have stayed in or moved out of the 15% most deprived in Scotland



Reproduced by permission of Ordnance Survey on behalf of HMSO. © Crown copyright and database right (2012). All rights reserved. Ordnance Survey Licence number 100024655.

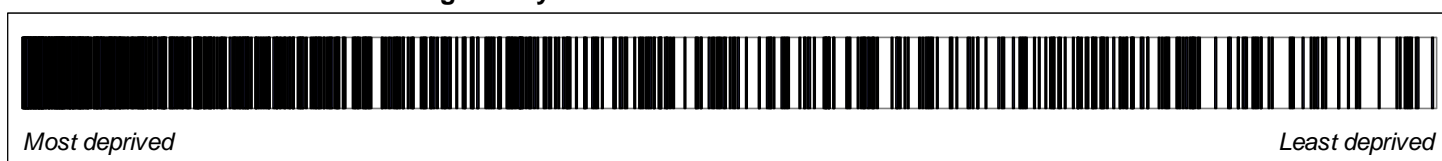
The map shows the areas within Glasgow City which have moved into the 15% most deprived, stayed in the 15% most deprived or moved out the 15% most deprived areas between SIMD 2009 and SIMD 2012.

## National Share of most deprived areas

- Of the 325 datazones in the 5% most deprived datazones in Scotland, 148 (45.5%) were found in Glasgow City in SIMD 2012, compared to 158 (48.6%) in 2009, 169 (52%) in 2006 and 226 (69.5%) in 2004.
- In SIMD 2012, 289 (29.6%) of the 976 datazones in the 15% most deprived datazones in Scotland were found in Glasgow City, compared to 302 (30.9%) in 2009, 330 (33.8%) in 2006 and 374 (38.3%) in 2004.

The barcode chart shows the position of the local authority's datazones in the Scotland-wide ranking. Each bar on the barcode represents a datazone in the local authority and is positioned according to its deprivation rank: the more deprived a datazone is, the further to the left it will be positioned.

## Barcode chart: distribution of Glasgow City's datazones in SIMD 2012





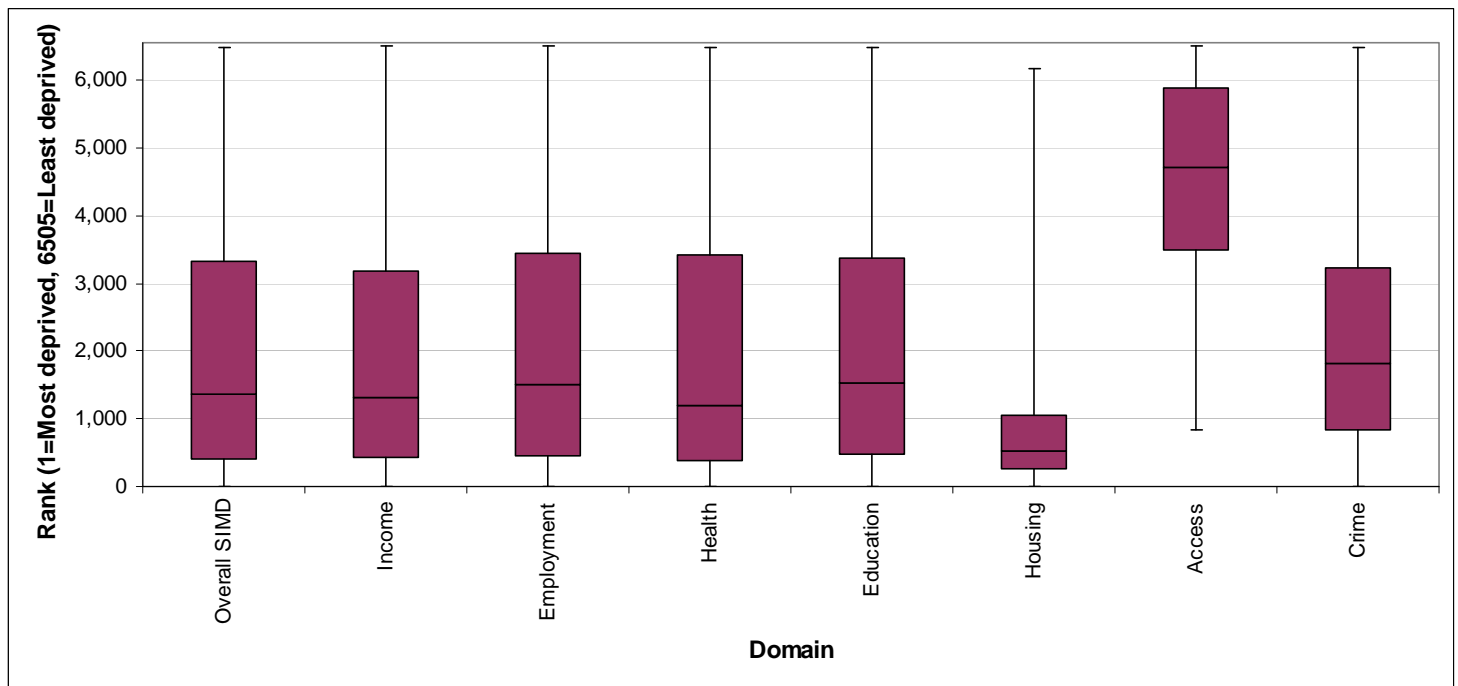
## Local Share of most deprived areas

- In SIMD 2012, 148 (21.3%) of Glasgow City's 694 datazones were found in the 5% most deprived datazones in Scotland, compared to 158 (22.8%) in 2009, 169 (24.4%) in 2006 and 226 (32.6%) in 2004.
- In SIMD 2012, 289 (41.6%) of Glasgow City's 694 datazones were found in the 15% most deprived datazones in Scotland, compared to 302 (43.5%) in 2009, 330 (47.6%) in 2006 and 374 (53.9%) in 2004.

## Individual domains

The box plot summarises the range of values for the overall SIMD and the seven domains which make up the SIMD. In the following sections the individual domains are examined in more detail.

**Box plot: Glasgow City's ranks in the overall SIMD 2012 and individual SIMD domains. Boxes show the middle 50% of values and the middle (median) value; whiskers show the minimum and maximum ranks.**



## Income Domain

The level of income deprivation in Glasgow City is greater than that in Scotland as a whole. In the SIMD 2012 income domain, 21.5% of the population of Glasgow City were income deprived. This compares to 13.4% across Scotland as a whole.

- *National share:* On the income domain in SIMD 2012, 289 (29.6%) of the 976 datazones in the 15% most deprived datazones in Scotland were found in Glasgow City, compared to 324 (33.2%) in 2009, 331 (33.9%) in 2006 and 342 (35%) in 2004.
- *Local share:* On the income domain in SIMD 2012, 289 (41.6%) of Glasgow City's 694 datazones were found in the 15% most deprived datazones in Scotland, compared to 324 (46.7%) in 2009, 331 (47.7%) in 2006 and 342 (49.3%) in 2004.
- The most income deprived datazone in Glasgow City in SIMD 2012 is S01003253, which is found in the Intermediate Zone of Parkhead West and Barrowfield and the Scottish Parliament Constituency of Glasgow Shettleston. It has a rank of 1, meaning that it is amongst the 5% most income deprived areas in Scotland.

## Employment Domain

The level of employment deprivation in Glasgow City is greater than that in Scotland as a whole. In the SIMD 2012 employment domain, 19.1% of the population of Glasgow City aged 16-60/64 were employment deprived. This compares to 12.8% across Scotland as a whole (see line chart).

Line chart: % of working age population employment deprived, SIMD 2004 to SIMD 2012



- **National share:** In the employment domain in SIMD 2012, 279 (28.6%) of the 976 datazones in the 15% most deprived datazones in Scotland were found in Glasgow City, compared to 289 (29.6%) in 2009, 310 (31.8%) in 2006 and 355 (36.4%) in 2004.
- **Local share:** In the employment domain in SIMD 2012, 279 (40.2%) of Glasgow City's 694 datazones were found in the 15% most deprived datazones in Scotland, compared to 289 (41.6%) in 2009, 310 (44.7%) in 2006 and 355 (51.2%) in 2004.
- The most employment deprived datazone in Glasgow City in SIMD 2012 is S01003253, which is found in the Intermediate Zone of Parkhead West and Barrowfield and the Scottish Parliament Constituency of Glasgow Shettleston. It has a rank of 1, meaning that it is amongst the 5% most employment deprived areas in Scotland.

## Health Domain

- **National share:** In the health domain in SIMD 2012, 308 (31.6%) of the 976 datazones in the 15% most deprived datazones in Scotland were found in Glasgow City, compared to 321 (32.9%) in 2009, 340 (34.8%) in 2006 and 394 (40.4%) in 2004.
- **Local share:** In the health domain in SIMD 2012, 308 (44.4%) of Glasgow City's 694 datazones were found in the 15% most deprived datazones in Scotland, compared to 321 (46.3%) in 2009, 340 (49%) in 2006 and 394 (56.8%) in 2004.
- The most health deprived datazone in Glasgow City in SIMD 2012 is S01003313, which is found in the Intermediate Zone of Parkhead West and Barrowfield and the Scottish Parliament Constituency of Glasgow Shettleston. It has a rank of 1, meaning that it is amongst the 5% most health deprived areas in Scotland.

## Education Domain

- **National share:** In the education domain in SIMD 2012, 273 (28%) of the 976 datazones in the 15% most deprived datazones in Scotland were found in Glasgow City, compared to 276 (28.3%) in 2009, 305 (31.3%) in 2006 and 339 (34.7%) in 2004.

- *Local share:* In the education domain in SIMD 2012, 273 (39.3%) of Glasgow City's 694 datazones were found in the 15% most deprived datazones in Scotland, compared to 276 (39.8%) in 2009, 305 (43.9%) in 2006 and 339 (48.8%) in 2004.
- The most education deprived datazone in Glasgow City in SIMD 2012 is S01003627, which is found in the Intermediate Zone of Springburn East and Cowlares and the Scottish Parliament Constituency of Glasgow Springburn. It has a rank of 6, meaning that it is amongst the 5% most education deprived areas in Scotland.

### Housing Domain

- *National share:* On the housing domain in SIMD 2012, 495 (50.7%) of the 976 datazones in the 15% most deprived datazones in Scotland were found in Glasgow City.
- *Local share:* On the housing domain in SIMD 2012, 495 (71.3%) of Glasgow City's 694 datazones were found in the 15% most deprived datazones in Scotland.
- The most housing deprived datazone in Glasgow City in SIMD 2012 is S01003404, which is found in the Intermediate Zone of Cranhill, Lightburn and Queenslie South and the Scottish Parliament Constituency of Glasgow Baillieston. It has a rank of 1, meaning that it is amongst the 5% most housing deprived areas in Scotland.

### Access Domain

- *National share:* In the access domain in SIMD 2012, 3 (0.3%) of the 976 datazones in the 15% most deprived datazones in Scotland were found in Glasgow City, compared to 0 (0%) in 2009, 1 (0.1%) in 2006 and 8 (0.8%) in 2004.
- *Local share:* In the access domain in SIMD 2012, 3 (0.4%) of Glasgow City's 694 datazones were found in the 15% most deprived datazones in Scotland, compared to 0 (0%) in 2009, 1 (0.1%) in 2006 and 8 (1.2%) in 2004.
- The most access deprived datazone in Glasgow City in SIMD 2012 is S01003710, which is found in the Intermediate Zone of Summerston Central and West and the Scottish Parliament Constituency of Glasgow Maryhill. It has a rank of 840, meaning that it is amongst the 15% most access deprived areas in Scotland.

### Crime Domain

- *National share:* In the crime domain in SIMD 2012, 205 (21%) of the 976 datazones in the 15% most deprived datazones in Scotland were found in Glasgow City, compared to 179 (18.3%) in 2009 and 213 (21.8%) in 2006.
- *Local share:* In the crime domain in SIMD 2012, 205 (29.5%) of Glasgow City's 694 datazones were found in the 15% most deprived datazones in Scotland, compared to 179 (25.8%) in 2009 and 213 (30.7%) in 2006.
- The most crime deprived datazone in Glasgow City in SIMD 2012 is S01003410, which is found in the Intermediate Zone of City Centre West and the Scottish Parliament Constituency of Glasgow Kelvin. It has a rank of 1, meaning that it is amongst the 5% most crime deprived areas in Scotland.