

Question 1



Do the things in the easy read consultation report reflect your views and opinions about services for people with learning disabilities?

(Please tick your answer)



Yes



No

You can put any comments about this question here.

Lisbeth unable to read or write but with pictures, she was able to recognise what they were + with staff support able to fill in this form + have report read to her.



Question 2

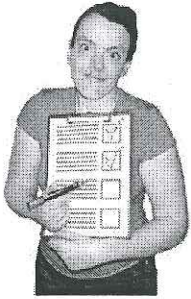
What do you think has worked well over the last 10 years for people with learning disabilities and family carers?

This could be changes in your local community or all over Scotland.

Please write your answer here.

Lisbeth is known + accepted in local community
She uses local shops, staff know her by name
+ speak to her as they would any customer.

Lisbeth is accepted + listened to by members of
the walking group + seated exercise class, she participates
in. Always with staff support to attend these.



Question 3

What do you think still needs to be done by the Government to make the lives of people with learning disabilities and family carers better?

Please write your answer here.

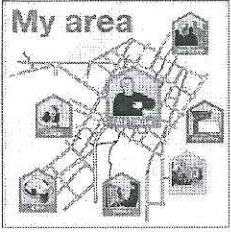
Lisbeth had no comments on this.



Question 4 - (this question is for organisations only)

- What have you done in your organisation to improve services for people with learning disabilities in your local area?
- What have you done in your organisation to improve access to services for people with learning disabilities in your local area?

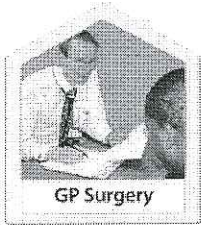
Please write your answer here.



Question 5

What have you done to make things better in your local area for people with learning disabilities and family carers?

Please write your answer here.

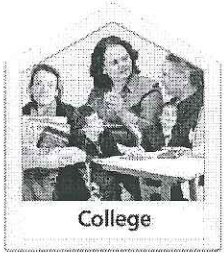


Question 6

What do you think needs to be done to help people with learning disabilities get access to good healthcare?

Please write your answer here.

Staff ensure I get good healthcare
+ they take me to any appointments
I have



Question 7

What do you think needs to be done to improve access to better education and learning for people with learning disabilities?

Please write your answer here.

I go to college with support from my Day Centre I attend.

I hope to do an Arts Class with support from staff ~~where~~ who live with me.



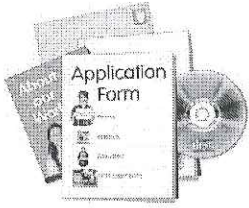
Question 8

What do you think needs to be done to help people with learning disabilities live more independent lives?

Please put your answers here.

I have my own tenancy,
staff member lives with me 24hrs a day
all year round.

People need more staff support to live
independant lives, even if it might be for
a few hours each day



Question 9

What do you think needs to be done to help people with learning disabilities get jobs?

Please write your answer here

I can't work because I can't have staff with me as work places won't allow it.



Question 10

What do you think are the things we need to do in the future to make the lives of people with learning disabilities better?

Please write the most important things first.

Please write your answers here.

Given chance to be better at things I can do.
Be accepted in local communities, with
interaction from all types of people.